

M-627V/677V

SERVICE MANUAL

US Model
Canadian Model
M-627V/677V
AEP Model
M-627V

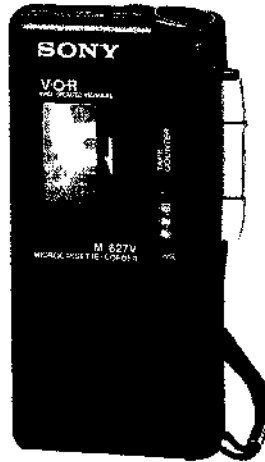


Photo: M-627V

Model Name Using Similar Mechanism	NEW
Tape Transport Mechanism Type	MZ-627V-14

SPECIFICATIONS

Tape

MICROCASSETTE™ (normal position type)

Recording system

2-track 1-channel monaural

Speaker

Approx. 3.6 cm (1⁷/₁₆ in.) dia.

Tape speed

2.4 cm/s (1⁵/₁₆ ips), 1.2 cm/s (1⁵/₃₂ ips)

Frequency range

250 – 4,000 Hz

Input

Microphone input jack (minijack/PLUG IN POWER)
sensitivity 0.24 mV for 3 kilohms or lower impedance
microphone

Output

Earphone jack (minijack) for 8 – 300 ohms earphone

Power output

160 mW (at 10% harmonic distortion)

Battery life (recording)

SONY SUM-3 (NS) 5.5H
SONY ALKALINE AM3 (N) 14H

Power requirements

- Two R6 (size AA) batteries: 3 V DC
- Sony AC-E30L AC power adaptor (not supplied):
120 V AC, 60 Hz
- Sony DCC-E130L car battery cord (not supplied):
12 V car battery

Dimensions (w/h/d)

Approx. 66.7 x 120.8 x 25 mm (2³/₄ x 4⁷/₈ x 1 in.) incl.
projecting parts and controls

Mass

Approx. 180 g (6.4 oz) incl. batteries

Supplied accessories

- AC power adaptor (1, M-677V only)
- Battery charge adaptor (1, M-677V only)
- Rechargeable batteries (2, M-677V only)
- Microcassette tape MC-30 (1, M-627V AEP only)
- Carrying case (1, M-627V AEP only)
- R6 (size AA) batteries (2, M-627V AEP only)

Design and specifications are subject to change without notice.

MICROCASSETTE™ CORDER
SONY®

SERVICING NOTE



Flexible Circuit Board Repairing

- Keep the temperature of the soldering iron around 270°C during repairing.
- Do not touch the soldering iron on the same conductor of the circuit board (within 3 times).
- Be careful not to apply force on the conductor when soldering or unsoldering.


Notes on chip component replacement

- Never reuse a disconnected chip component.
- Notice that the minus side of a tantalum capacitor may be damaged by heat.

SAFETY-RELATED COMPONENT WARNING!!

COMPONENTS IDENTIFIED BY MARK  OR DOTTED LINE WITH MARK  ON THE SCHEMATIC DIAGRAMS AND IN THE PARTS LIST ARE CRITICAL TO SAFE OPERATION. REPLACE THESE COMPONENTS WITH SONY PARTS WHOSE PART NUMBERS APPEAR AS SHOWN IN THIS MANUAL OR IN SUPPLEMENTS PUBLISHED BY SONY.

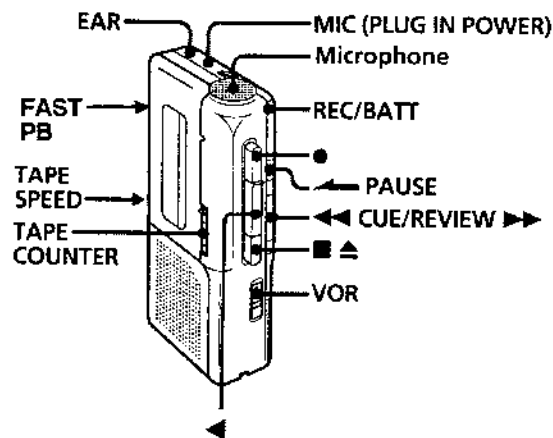
ATTENTION AU COMPOSANT AYANT RAPPORT À LA SÉCURITÉ!

LES COMPOSANTS IDENTIFIÉS PAR UNE MARQUE  SUR LES DIAGRAMMES SCHÉMATIQUES ET LA LISTE DES PIÈCES SONT CRITIQUES POUR LA SÉCURITÉ DE FONCTIONNEMENT. NE REMPLACER CES COMPOSANTS QUE PAR DES PIÈCES SONY DONT LES NUMÉROS SONT DONNÉS DANS CE MANUEL OU DANS LES SUPPLÉMENTS PUBLIÉS PAR SONY.

SECTION 1 GENERAL

This section is extracted from instruction manual.

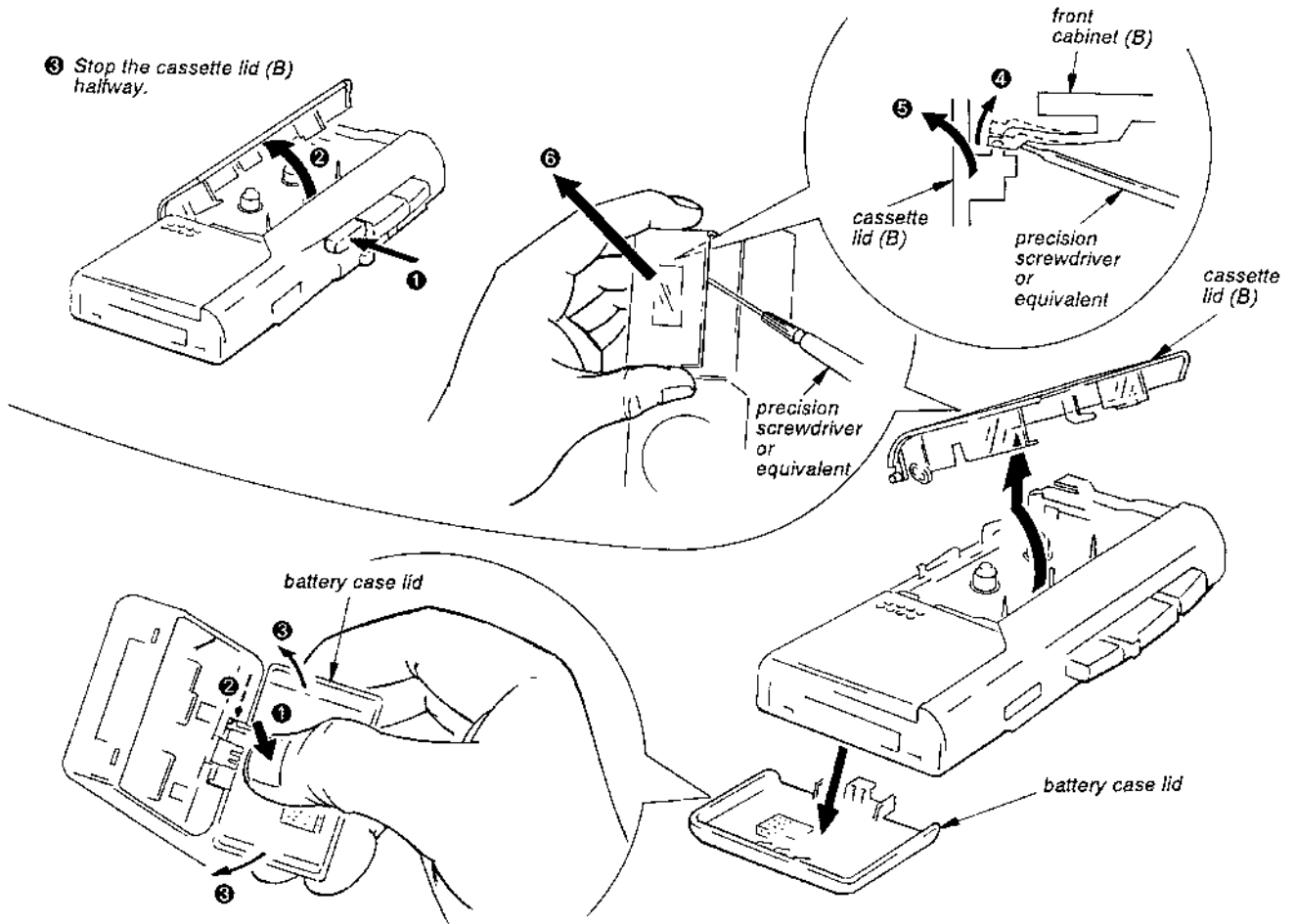
• Parts Identification



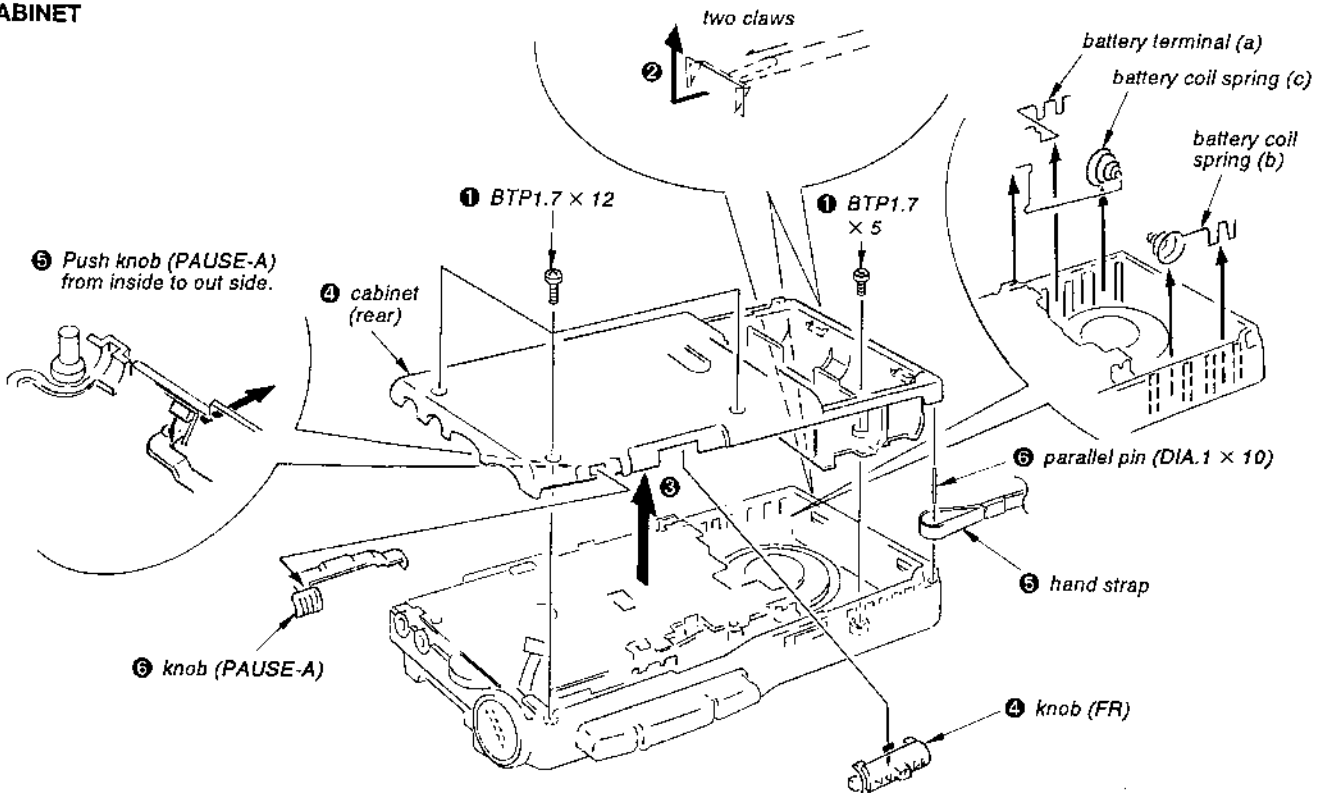
SECTION 2 DISASSEMBLY

Note: Follow the disassembly procedure in the numerical order given.

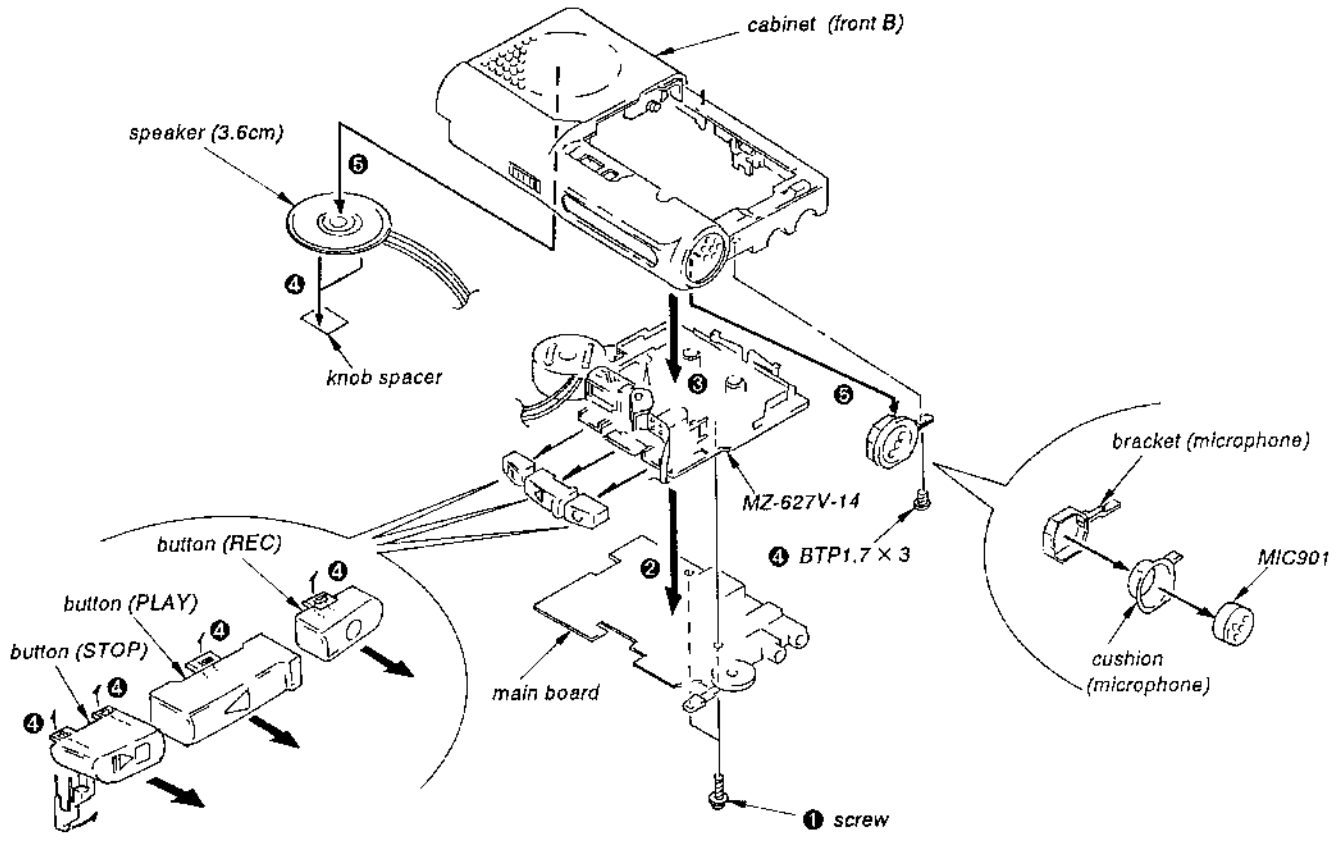
CASSETTE AND BATTERY LIDS



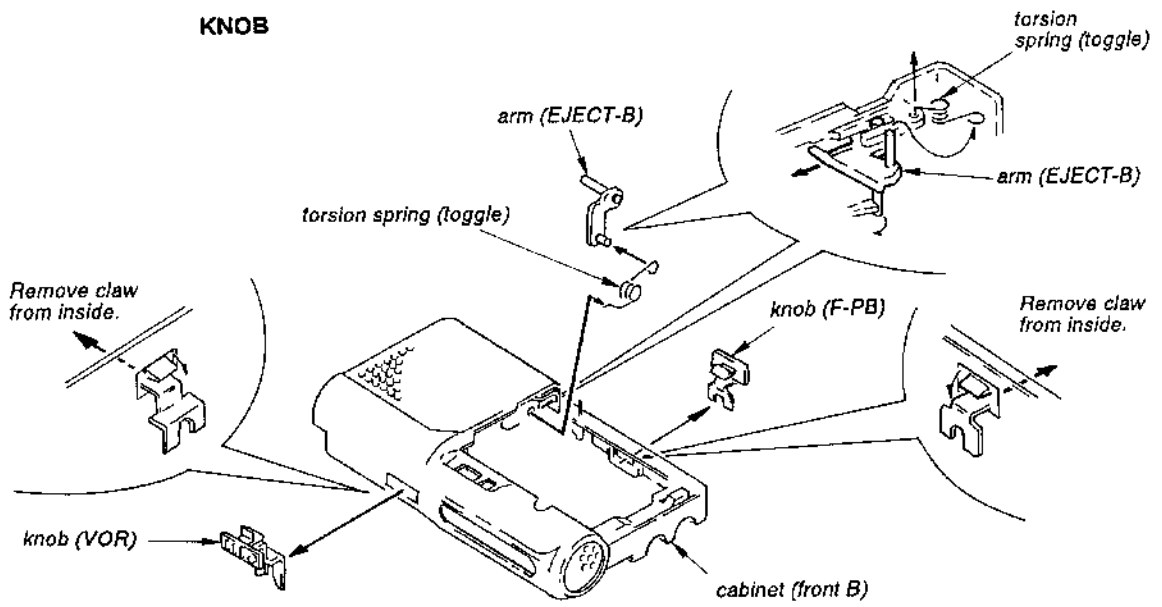
CABINET



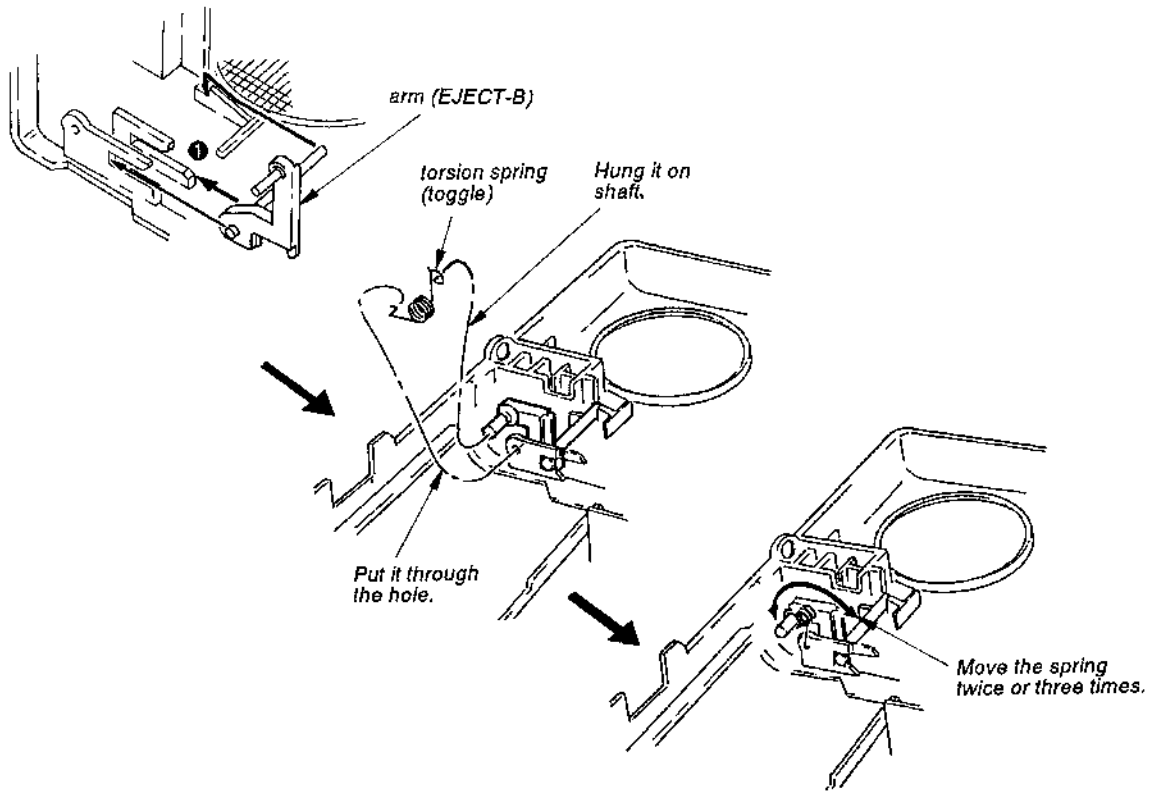
MECHANISM DECK



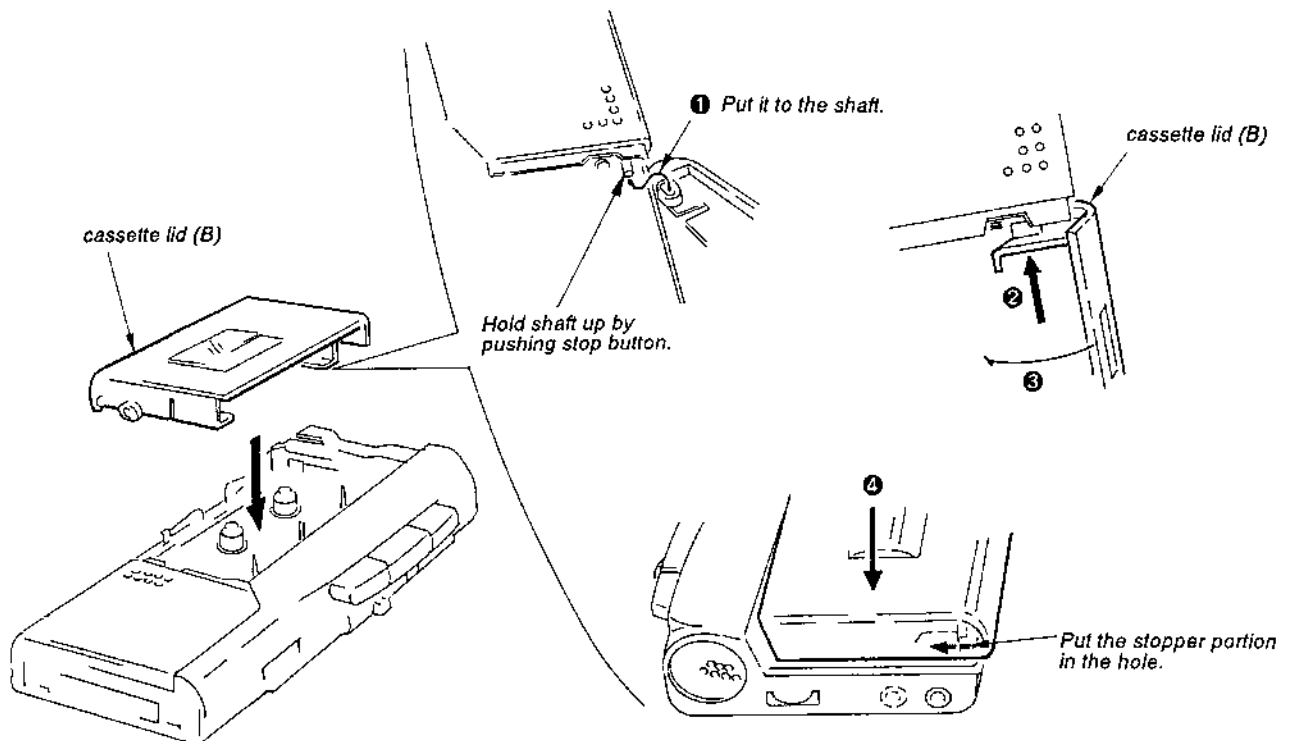
KNOB



ARM (EJECT-B) FITTING



CASSETTE LID (B) FITTING



SECTION 3 ADJUSTMENTS

2-1. MECHANICAL ADJUSTMENTS AND MEASUREMENT

PRECAUTION

1. Clean the following parts with a denatured-alcohol-moistened swab:
 record/playback/erase head pinch roller
 rubber belts capstan
2. Demagnetize the record/playback head with a head demagnetizer.
3. Do not use a magnetized screwdriver for the adjustments.
4. The adjustments should be performed with the rated power supply voltage unless otherwise noted.
 Power supply voltage : 3 Vdc
 TAPE SPEED switch : 2.4 cm

Torque Measurement

Torqu	Meter Reading	Torqu Meter
Forward	5-13g • cm (0.07 - 0.180oz • inch)	CQ-103M
Fast Forward	5-13g • cm (0.07 - 0.180oz • inch)	CQ-201M
Rewind	more than 15 g • cm (more than 0.21oz • inch)	CQ-201M

Tape Tension Measurement

Meter	Meter Reading
CQ-403M	more than 30 g (more than 0.42 oz)

2-2. ELECTRICAL ADJUSTMENTS

Test Tape

Type	Signal	Used for	Tape Speed (cm/s)
WS-12	3 kHz, - 10 dB	Tape Speed Adjustment	1.2
WS-24			2.4
S-2-A030	3 kHz, - 20 dB	Head Azimuth Adjustment	2.4

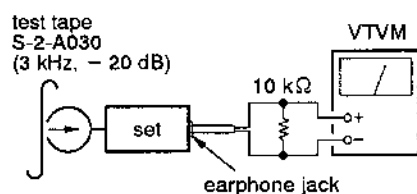
Record/Playback Head Azimuth Adjustment

setting:

- VOLUME control : mechanical mid
 TAPE SPEED switch : 2.4 cm/s
 VOR switch : OFF

Procedure:

1. Mode : playback

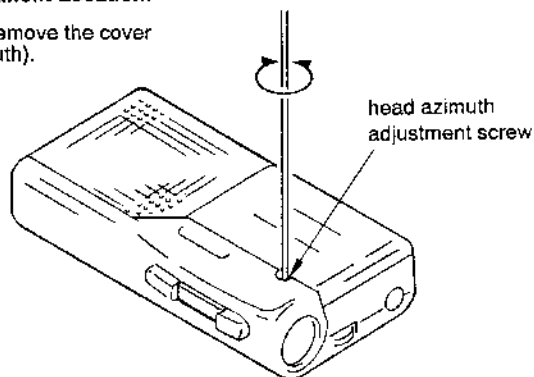


2. Turn the adjustment screw to obtain the maximum reading on VTVM.

Note: Several peaks may appear, but the maximum.

Adjustment Location:

First remove the cover (azimuth).



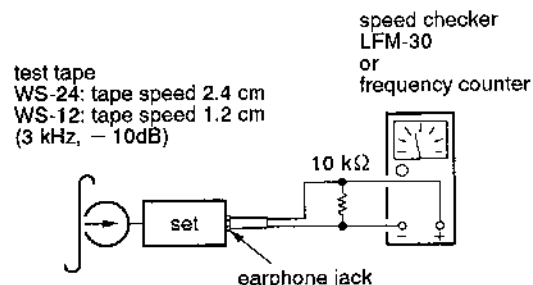
Tape Speed adjustment

Setting:

- VOLUME control : mechanical mid
 VOR switch : OFF

Procedure:

- Reform 2.4 cm /s speed adjustment before 1.2 cm/s speed adjustment mode : playback

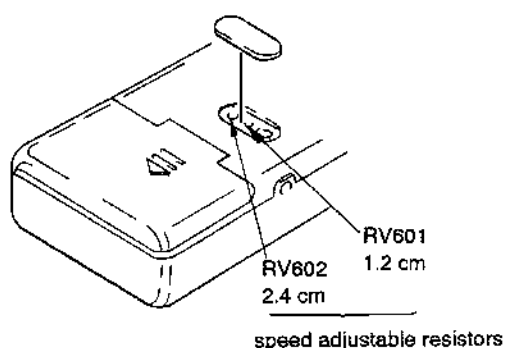


Tape Speed	Speed checker	Frequency counter
2.4 cm/s	± 3%	3,000 ± 90 Hz
1.2 cm/s	± 3%	3,000 ± 90 Hz

Frequency difference between the beginning and the end of the tape should be within 0.5%.

- 2.4cm/s (15 Hz)
 1.2 cm/s (15 Hz)

Adjustment Location:

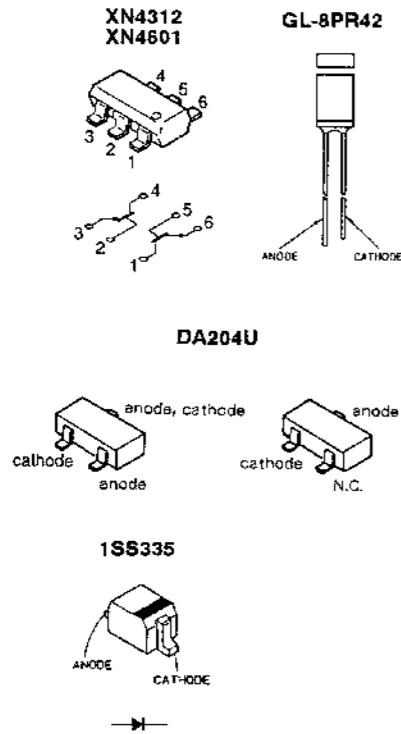


SECTION 4
DIAGRAMS

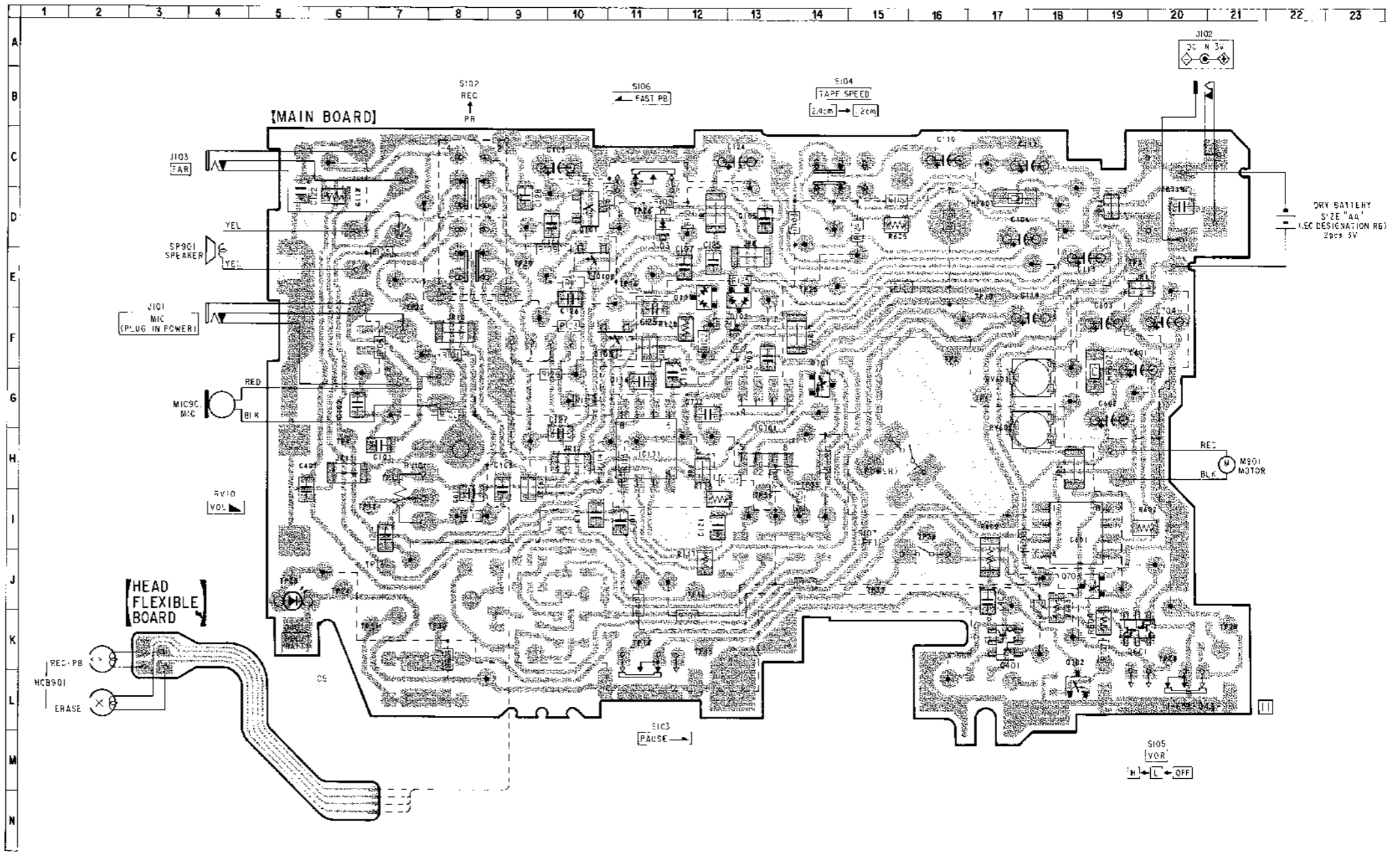
• Semiconductor Location

Ref. No.	Location
D101	E-12
D102	E-13
D103	D-11
D401	K-5
IC101	H-11
IC601	I-18
IC701	G-13
Q101	D-10
Q102	E-10
Q103	F-11
Q401	K-17
Q601	K-19
Q701	G-14
Q702	L-18
Q703	J-19

• Semiconductor Lead Layouts



4-1. PRINTED WIRING BOARD



Note on Schematic Diagram:

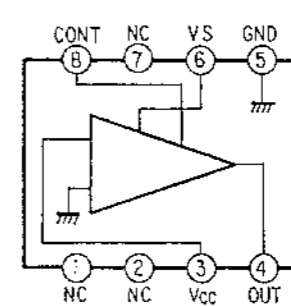
- All capacitors are in μF unless otherwise noted. μF : $\mu\mu\text{F}$
- 50 WV or less are not indicated except for electrolytics and tantalums.
- All resistors are in Ω and $\frac{1}{4}$ W or less unless otherwise specified.
- : printed resistor.
- : B + Line.
- : panel designation.
- : adjustment for repair.
- Total current is measured with no cassette installed.
- Power voltage is dc 3 V and fed with regulated dc power supply from external power voltage jack.
- Voltages are dc with respect to ground under no-signal conditions.
no mark : PLAY
() : REC
- Voltages are taken with a VOM (10 M Ω /V).
Voltage variations may be noted due to normal production tolerances.
- Signal path.
 : PB
 : REC

Note on Printed Wiring Board:

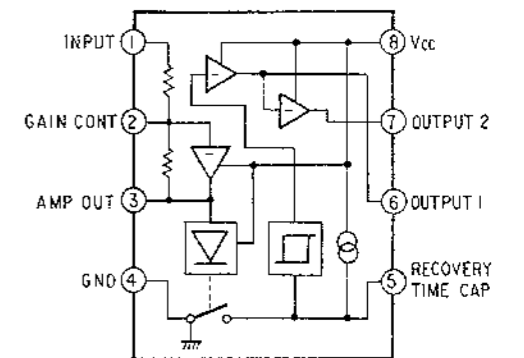
- : parts extracted from the component side.
- : Through hole.
- : Pattern from the side which enables seeing.
- : Pattern of the rear side.
- : printed resistor of the rear side.

• IC Block Diagrams

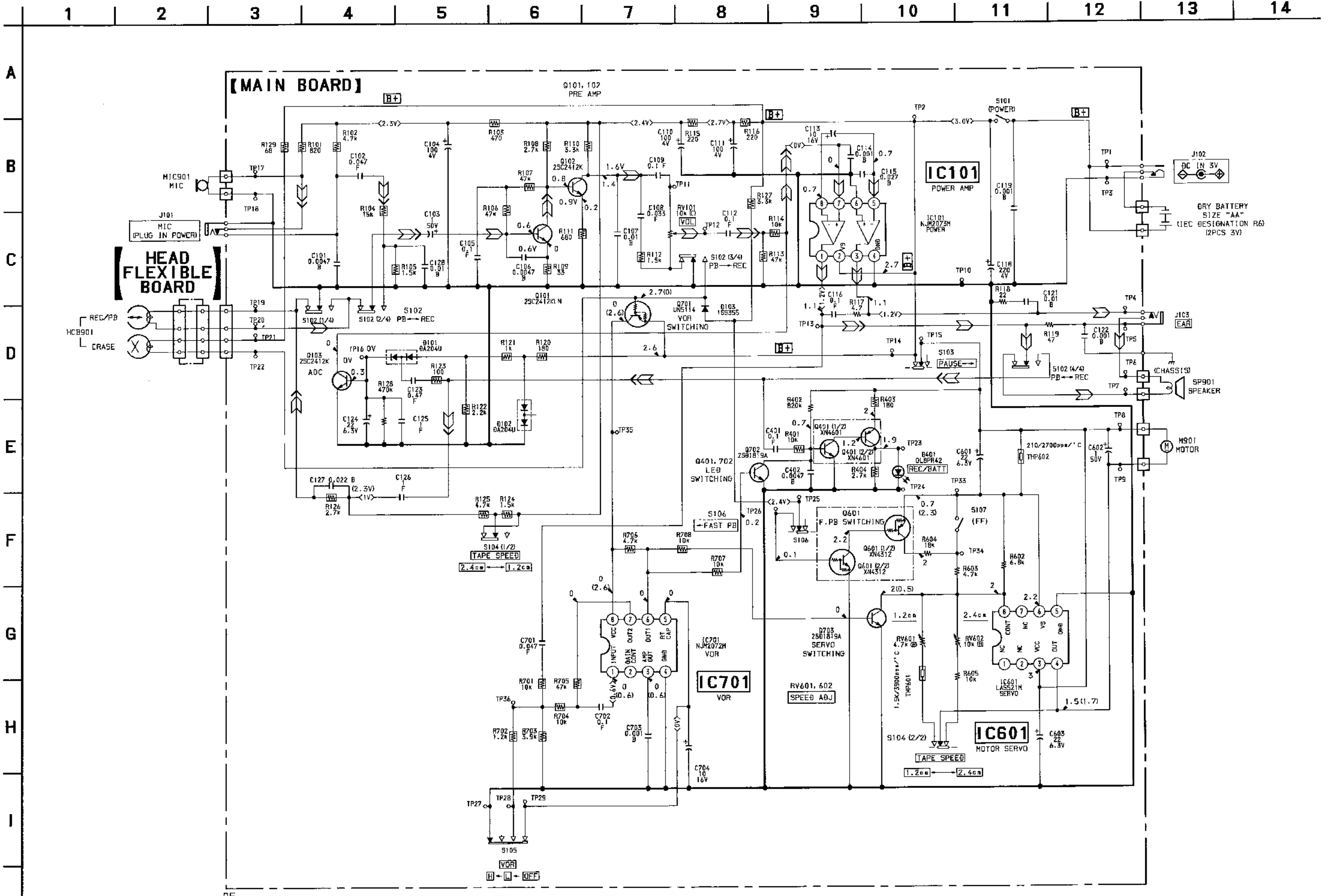
LA5521M



NJM2072M



4-2. SCHEMATIC DIAGRAM



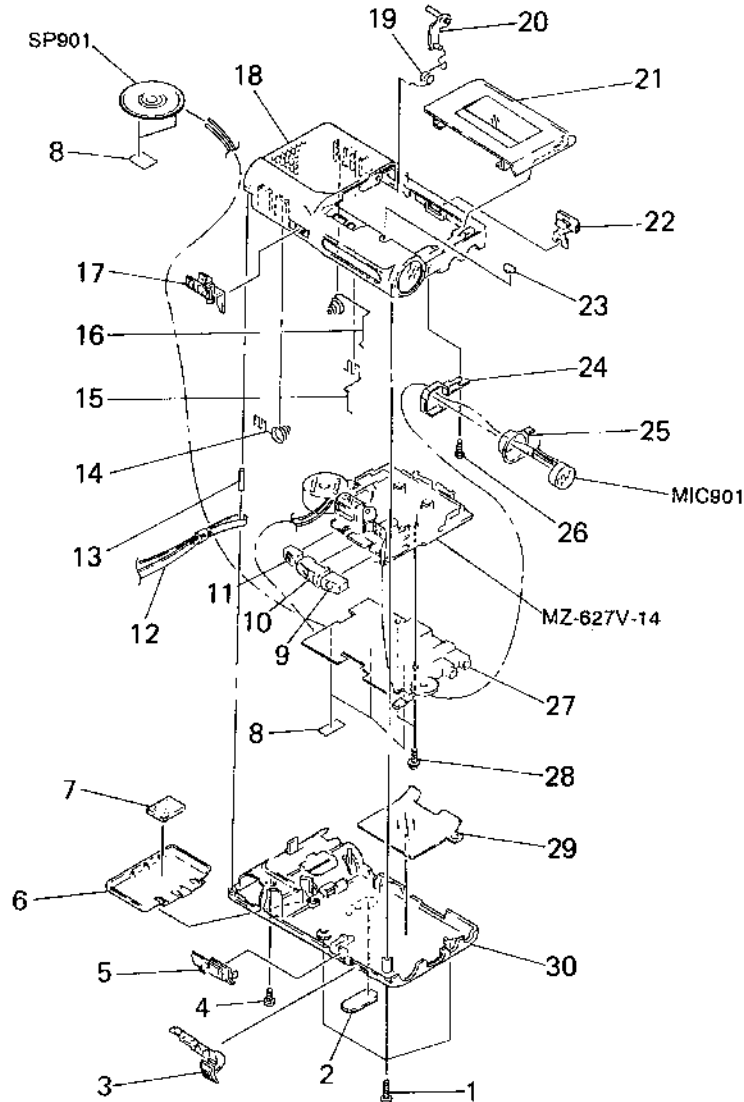
SECTION 5 EXPLODED VIEWS

NOTE:

- -XX and -X mean standardized parts, so they may have some difference from the original one.
- Color Indication of Appearance Parts
Example:
KNOB, BALANCE (WHITE) ... (RED)

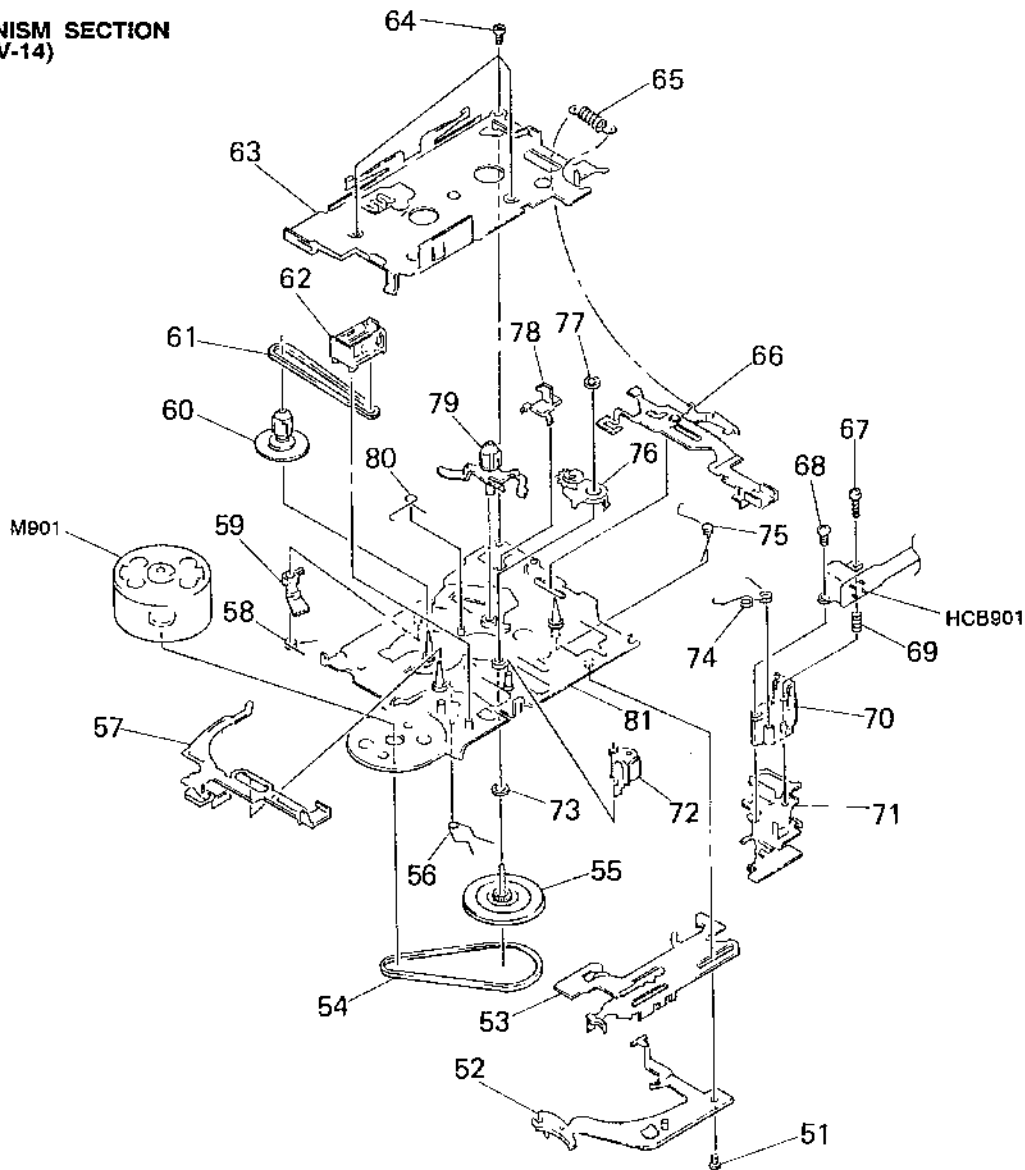
↑ ↑
 Parts Color Cabinet's Color
- Items marked "*" are not stocked since they are seldom required for routine service. Some delay should be anticipated when ordering these items.
- The mechanical parts with no reference number in the exploded views are not supplied.
- Hardware (# mark) list and accessories and packing materials are given in the last of the electrical parts list.

(1) GENERAL SECTION



Ref. No.	Part No.	Description	Remark	Ref. No.	Part No.	Description	Remark
1	3-318-203-51	SCREW (B1, 7X12), TAPPING		18	X-3368-579-1	CABINET (FRONT) (B3) ASSY	
2	3-358-363-11	PLATE, BLIND		19	3-914-931-01	SPRING (TOGGLE), TORSION	
3	3-914-938-01	KNOB (PAUSE-A) (PAUSE)		20	3-914-936-01	ARM (EJECT-B)	
4	3-318-203-72	SCREW (B1, 7X5), TAPPING		21	X-3368-568-1	LID (B2) ASSY, CASSETTE (M-677V)	
5	3-914-939-01	KNOB (FR)		22	X-3368-576-1	LID (B1) ASSY, CASSETTE (M-627V)	
6	3-914-950-01	LID, BATTERY CASE		23	3-914-878-01	KNOB (F-PB) (FAST PB)	
7	3-914-930-01	CUSHION (BATTERY CASE LID)		24	3-914-952-01	COVER (AZIMUTH)	
8	3-831-441-XX	SPACER, KNOB		* 24	3-914-949-01	BRACKET (MICROPHONE)	
9	3-914-948-11	BUTTON (REC)		* 25	3-914-937-01	CUSHION (MICROPHONE)	
10	3-914-947-11	BUTTON (PLAY)		26	3-318-382-31	SCREW (1, 7X3), TAPPING	
11	3-914-946-11	BUTTON (STOP)		* 27	A-3016-592-A	MAIN BOARD, COMPLETE	
12	3-328-319-11	STRAP, HAND		28	3-342-156-51	SCREW	
13	3-669-481-07	PIN (DIA 1X10), PARALLEL		29	3-914-929-01	PAPER, SHIELD	
14	3-914-934-01	SPRING (B), BATTERY COIL		* 30	3-914-958-21	CABINET (REAR)	
15	3-914-933-01	TERMINAL (A), BATTERY		MIC901	1-542-136-11	MICROPHONE, ELECTRET CONDENSER	
16	3-914-932-01	SPRING (C), BATTERY COIL		SP901	1-544-657-12	SPEAKER (3.6CM)	
17	3-914-879-01	KNOB (VOR)					

(2) MECHANISM SECTION
(MZ-627V-14)



Ref.No.	Part No.	Description	Remark	Ref.No.	Part No.	Description	Remark
51	3-704-243-11	SCREW (P1. 7X2. 0)		68	3-704-245-42	SCREW (P1. 4X3. 0)	
* 52	3-914-920-01	PLATE (FR), LOCK		69	3-378-792-01	SPRING, COMPRESSION	
* 53	3-914-919-01	SLIDER (FR)		70	3-914-914-01	GUIDE, TAPE	
54	3-377-420-11	BELT		* 71	3-914-913-01	LEVER (PLAY)	
55	X-3368-702-1	FLYWHEEL (1. 3) ASSY		72	X-3368-585-1	PINCH LEVER ASSY	
56	3-914-903-01	SPRING (FR), TORSION		73	3-350-945-11	WASHER	
* 57	X-3368-486-1	LEVER (STOP) ASSY		74	3-914-902-01	SPRING (P), TORSION	
58	3-914-906-01	SPRING (S. OFF), TORSION		75	3-914-904-01	SPRING (PFR), TORSION	
59	3-914-915-01	ARM (S. OFF)		76	X-3368-584-1	ARM (MIDWAY GEAR) ASSY	
60	X-3368-582-1	REEL ASSY, T		77	3-331-007-21	WASHER	
61	3-343-948-01	BELT		78	3-914-916-01	ARM (CKAW DETECTION)	
62	1-548-579-21	COUNTER, TAPE (SMALL TYPE)		79	X-3368-587-1	REEL ASSY, S	
* 63	3-914-923-01	COVER, MD		80	3-914-907-01	SPRING (MIDWAY GEAR), TORSION	
64	3-366-892-11	SCREW (M1. 4X1. 4)		* 81	X-3368-701-1	CHASSIS (COMP.) ASSY (C), MECH	
65	3-914-908-01	SPRING (REC LOCK), TENSION		HCB901	1-500-135-11	HEAD, MAGNETIC (REC/PB/ERASE)	
* 66	X-3368-583-1	LEVER (REC) ASSY		M901	1-698-384-11	MOTOR, DC	
67	3-703-816-82	SCREW (M1. 4X6. 0), SPECIAL HEAD					

SECTION 6 ELECTRICAL PARTS LIST

MAIN

NOTE:

- Due to standardization, replacements in the parts list may be different from the parts specified in the diagrams or the components used on the set.
- -XX and -X mean standardized parts, so they may have some difference from the original one.
- RESISTORS
All resistors are in ohms.
METAL: Metal-film resistor.
METAL OXIDE: Metal oxide-film resistor.
F: nonflammable

- Items marked "*" are not stocked since they are seldom required for routine service. Some delay should be anticipated when ordering these items.
- SEMICONDUCTORS
In each case, u: μ , for example:
, uA.: μ A. uPA.: μ PA.
uPB.: μ PB. uPC.: μ PC. uPD.: μ PD.
- CAPACITORS
uF: μ F
- COILS
uH: μ H

The components identified by mark Δ or dotted line with mark Δ are critical for safety. Replace only with part number specified.

Les composants identifiés par une marque Δ sont critiques pour la sécurité. Ne les remplacer que par une pièce portant le numéro spécifié.

When indicating parts by reference number, please include the board.

Ref. No.	Part No.	Description	Remark	Ref. No.	Part No.	Description	Remark
*	A-3016-532-A	MAIN BOARD, COMPLETE				< DIODE >	

		< CAPACITOR >					
C101	1-163-017-00	CERAMIC CHIP	0.0047uF	5%	50V		
C102	1-163-035-00	CERAMIC CHIP	0.047uF		50V		
C103	1-104-390-21	ELECT	1uF	20%	50V		
C104	1-104-401-21	ELECT	100uF	20%	4V		
C105	1-163-038-00	CERAMIC CHIP	0.1uF		25V		
C106	1 163 017-00	CERAMIC CHIP	0.0047uF	5%	50V		
C107	1 164 232-11	CERAMIC CHIP	0.01uF		50V		
C108	1 163 034-00	CERAMIC CHIP	0.033uF		50V		
C109	1 163 038-00	CERAMIC CHIP	0.1uF		25V		
C110	1-104-401 21	ELECT	100uF	20%	4V		
C111	1-104 401 21	ELECT	100uF	20%	4V		
C112	1 163-038-00	CERAMIC CHIP	0.1uF		25V		
C113	1-104-368-21	ELECT	10uF	20%	16V		
C114	1-163-009-11	CERAMIC CHIP	0.001uF	10%	50V		
C115	1-163-986-00	CERAMIC CHIP	0.027uF	10%	25V		
C116	1-163-038-00	CERAMIC CHIP	0.1uF		25V		
C118	1-104-402-21	ELECT	220uF	20%	4V		
C119	1-163-009-11	CERAMIC CHIP	0.001uF	10%	50V		
C121	1-164-232-11	CERAMIC CHIP	0.01uF		50V		
C122	1-163-009 11	CERAMIC CHIP	0.001uF	10%	50V		
C123	1-164-005-11	CERAMIC CHIP	0.47uF		25V		
C124	1-104-355-21	ELECT	22uF	20%	6.3V		
C125	1-164-346-11	CERAMIC CHIP	1uF		16V		
C126	1-164-346-11	CERAMIC CHIP	1uF		16V		
C127	1-163-037-11	CERAMIC CHIP	0.022uF	10%	25V		
C128	1-164-232-11	CERAMIC CHIP	0.01uF		50V		
C401	1-163-038-00	CERAMIC CHIP	0.1uF		25V		
C402	1-163-017-00	CERAMIC CHIP	0.0047uF	5%	50V		
C601	1-104-355-21	ELECT	22uF	20%	6.3V		
C602	1-104-390-21	ELECT	1uF	20%	50V		
C603	1-104-355-21	ELECT	22uF	20%	6.3V		
C701	1-163-035-00	CERAMIC CHIP	0.047uF		50V		
C702	1-163-038-00	CERAMIC CHIP	0.1uF		25V		
C703	1-163-009-11	CERAMIC CHIP	0.001uF	10%	50V		
C704	1-104-368-21	ELECT	10uF	20%	16V		
						< IC >	
						IC101 8-759-701-02 IC NJM2073M	
						IC601 8-759-804-43 IC LA5521M	
						IC701 8-759-701-51 IC NJM2072M	
						< JACK >	
						J101 1-766-156-11 JACK (MIC)	
						J102 1-580-372-41 JACK, DC (POLARITY UNIFIED TYPE) (DC IN 3V)	
						J103 1-766-156-11 JACK (EAR)	
						< JUMPER RESISTOR >	
						JR1 1-216-295-00 METAL GLAZE 0 5% 1/10W	
						JR2 1 216 296-00 METAL GLAZE 0 5% 1/8W	
						JR6 1-216-295-00 METAL GLAZE 0 5% 1/10W	
						JR7 1-216-296-00 METAL GLAZE 0 5% 1/8W	
						JR8 1-216-296-00 METAL GLAZE 0 5% 1/8W	
						JR9 1-216-295-00 METAL GLAZE 0 5% 1/10W	
						JR10 1-216-296-00 METAL GLAZE 0 5% 1/8W	
						JR11 1-216-296-00 METAL GLAZE 0 5% 1/8W	
						JR13 1-216-296-00 METAL GLAZE 0 5% 1/8W	
						JR14 1-216-295-00 METAL GLAZE 0 5% 1/10W	
						JR16 1-216-295-00 METAL GLAZE 0 5% 1/10W	
						JR17 1-216-296-00 METAL GLAZE 0 5% 1/8W	
						< TRANSISTOR >	
						Q101 8-729-016-80 TRANSISTOR 2SC2412KLN-T146-R	
						Q102 8-729-920-74 TRANSISTOR 2SC2412K-QR	
						Q103 8-729-920-74 TRANSISTOR 2SC2412K-QR	
						Q401 8 729-402-84 TRANSISTOR XN4601	
						Q601 8-729-420-20 TRANSISTOR XN4312	
						Q701 8-729-402-96 TRANSISTOR UN5114	
						Q702 8-729-402-32 TRANSISTOR 2SD1819A-R	
						Q703 8-729-402-32 TRANSISTOR 2SD1819A-R	

M-627V/677V

MAIN

Ref. No.	Part No.	Description	Remark
< RESISTOR >			
R101	1-249-416-11	CARBON	820 5% 1/4W F
R102	1-249-425-11	CARBON	4.7K 5% 1/4W F
R103	1-249-413-11	CARBON	470 5% 1/4W F
R104	1-216-077-00	METAL CHIP	15K 5% 1/10W
R105	1 216 053-00	METAL CHIP	1.5K 5% 1/10W
R106	1-249-437-11	CARBON	47K 5% 1/4W
R107	1-249-437-11	CARBON	47K 5% 1/4W
R108	1-249-422-11	CARBON	2.7K 5% 1/4W F
R109	1-249-399-11	CARBON	33 5% 1/4W F
R110	1-249-423-11	CARBON	3.3K 5% 1/4W F
R111	1-249-415-11	CARBON	680 5% 1/4W F
R112	1-216-053-00	METAL CHIP	1.5K 5% 1/10W
R113	1-249-437-11	CARBON	47K 5% 1/4W
R114	1-249-429-11	CARBON	10K 5% 1/4W
R115	1-216-033-00	METAL CHIP	220 5% 1/10W
R116	1-216 033 00	METAL CHIP	220 5% 1/10W
R117	1-216 308 00	METAL CHIP	4.7 5% 1/10W
R118	1-216-009-00	METAL CHIP	22 5% 1/10W
R119	1-216-017-00	METAL CHIP	47 5% 1/10W
R120	1-249-408-11	CARBON	180 5% 1/4W F
R121	1-249-417-11	CARBON	1K 5% 1/4W F
R122	1-249-421-11	CARBON	2.2K 5% 1/4W F
R123	1-247-807-31	CARBON	100 5% 1/4W
R124	1-216-053-00	METAL CHIP	1.5K 5% 1/10W
R125	1-249-425-11	CARBON	4.7K 5% 1/4W F
R126	1-249-422-11	CARBON	2.7K 5% 1/4W F
R127	1-249-423-11	CARBON	3.3K 5% 1/4W F
R128	1-216-113-00	METAL CHIP	470K 5% 1/10W
R129	1-216-021-00	METAL CHIP	68 5% 1/10W
R401	1-249-423-11	CARBON	10K 5% 1/4W
R402	1-216-268-00	METAL GLAZE	820K 5% 1/8W
R403	1-249-408-11	CARBON	180 5% 1/4W F
R404	1-249-422-11	CARBON	2.7K 5% 1/4W F
R602	1-216-069-00	METAL CHIP	6.8K 5% 1/10W
R603	1-216-065-00	METAL CHIP	4.7K 5% 1/10W
R604	1-216-079-00	METAL CHIP	18K 5% 1/10W
R605	1-216-073-00	METAL CHIP	10K 5% 1/10W
R701	1-249-429-11	CARBON	10K 5% 1/4W
R702	1-216-051-00	METAL CHIP	1.2K 5% 1/10W
R703	1-216-063-00	METAL CHIP	3.9K 5% 1/10W
R704	1-249-429-11	CARBON	10K 5% 1/4W
R705	1-249-437-11	CARBON	47K 5% 1/4W
R706	1-249 425 11	CARBON	4.7K 5% 1/4W F
R707	1-249-429-11	CARBON	10K 5% 1/4W
R708	1-249-429-11	CARBON	10K 5% 1/4W

Ref. No.	Part No.	Description	Remark
< VARIABLE RESISTOR >			
RV101	1-237-731-21	RES, VAR, CARBON 10K (VOL)	
RV001	1-238-663-11	RES, ADJ, CARBON 4.7K	
RV002	1-223-586-11	RES, ADJ, CARBON 10K	
< SWITCH >			
S101	1-572-688-11	SWITCH, PUSH (1 KEY) (POWER)	
S102	1-692-999-11	SWITCH, SLIDE (REC/PB)	
S103	1-571-275-31	SWITCH, SLIDE (PAUSE)	
S104	1-571-478-11	SWITCH, SLIDE (TAPE SPED)	
S105	1-571-506-41	SWITCH, SLIDE (VOR)	
S106	1-571-275-31	SWITCH, SLIDE (FAST PB)	
S107	1 572 688-11	SWITCH, PUSH (1 KEY) (FF)	
< POSITIVE THERMISTOR >			
THP601	1-808-956-11	THERMISTOR, POSITIVE	
THP602	1-809-757-11	THERMISTOR, POSITIVE	

MISCELLANEOUS			

HCB901	1-500-135-11	HEAD, MAGNETIC (REC/PB/ERASE)	
M901	1-598-384-11	MOTOR, DC	
MIC901	1-542-136-11	MICROPHONE, ELECTRET CONDENSER	
SP901	1-544-657-12	SPEAKER (3.6CM)	

ACCESSORIES & PACKING MATERIALS			

	1-528-523-11	BATTERY, STORAGE, NI-CD (Canadian) (M-677V)	
	1-528-523-31	BATTERY, NICKEL CADMIUM (US) (M-677V)	
△	1-528-405-11	ADAPTOR, BATTERY CHARGE (Canadian) (M-677V)	
△	1-528-405-21	ADAPTOR, BATTERY CHARGE (US) (M-677V)	
△	1-693-073-21	ADAPTOR, AC (AC-E350) (M-677V)	
	3 758-981-61	MANUAL, INSTRUCTION (ENGLISH, FRENCH, SPANISH, PORTUGUESE) (AEP)	
	3-758 981 81	MANUAL, INSTRUCTION (ENGLISH) (US, Canadian)	
	3-758 981 91	MANUAL, INSTRUCTION (FRENCH) (Canadian)	
	3 758 981 71	MANUAL, INSTRUCTION (GERMAN, DUTCH, SWEDISH, ITALIAN) (AEP)	
	3-914-895-01	CASE, CARRYING (AEP)	
*	3-916-700-01	INDIVIDUAL CARTON (M-627V:Canadian)	
*	3-916-702-01	INDIVIDUAL CARTON (M-627V:AEP)	
*	3-916-728-01	INDIVIDUAL CARTON (M-627V:F)	
*	3-916-688-11	CUSHION	

The components identified by mark △ or dotted line with mark △ are critical for safety. Replace only with part number specified.	Les composants identifiés par une marque △ sont critiques pour la sécurité. Ne les remplacer que par une pièce portant le numéro spécifié.
--	--