

M-437/529V/539V/579V

SERVICE MANUAL

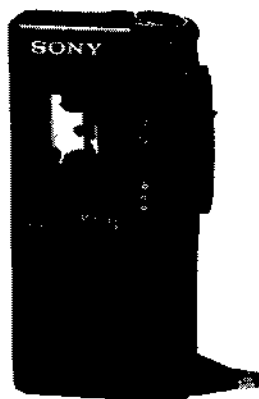


Photo M-529V

US Model
Canadian Model
UK Model
Tourist Model
M-529V

AEP Model
M-529V/579V

E Model
M-437/529V/539V

Model Name Using Similar Mechanism	NEW
Tape Transport Mechanism Type	MZ-425-14 (M-437)
	MZ-627V-14 (M-529V/539V/729V)

SPECIFICATIONS

Tape

MICROCASSETTE™ (normal position type)

Recording system

2-track 1-channel monaural

Speaker

Approx 3.6 cm (1 3/16 in.) dia

Tape speed

2.4 cm/s (1 5/16 ips), 1.2 cm/s (1 5/32 ips)

Frequency range

300 - 4,000 Hz

Output

Earphone jack (minijack) for 8 - 300 ohms earphone

Power output (at 10% harmonic distortion)

160 mW

Battery life (recording)

See "Preparing Power Sources"

Power requirements

- Two size AA (R6) batteries 3 V DC
- Sony AC-E30HG AC power adaptor (not supplied)
240V AC, 50Hz (UK model)
220/230 V AC, 50 Hz (AEP model)
120/220 V AC, 50/60 Hz (EXCEPT AEP, UK model) (for M-437/529V/539V only)

Dimensions (w/h/d)

Approx 66.7 x 120.8 x 25 mm (2 3/4 x 4 7/8 x 1 in.) incl projecting parts and controls

Mass

Approx 160 g (5.7 oz) incl batteries

Supplied accessories

- Microcassette tape MC-30 (1) (M-437 and M-529V (European model) only)
- Handstrap (1) (M-529V/539V/579V only)
- AC power adaptor (1) (M-579V only)
- Charge adaptor (1) (M-579V only)
- Rechargeable batteries NC-AA, 1.2 V, 700 mAh, Ni-Cd (2) (M-579V only)

Design and specifications are subject to change without notice



992312711

MICROCASSETTE™ - CORDER

SONY®

TABLE OF CONTENTS

Specifications	1
1. GENERAL	2
2. DISASSEMBLY	
2-1. Cassette and Battery Lids Removal	3
2-2. Cabinet Removal	3
2-3. Mechanism Deck Removal	4
3. ADJUSTMENTS	
3-1. Mechanical Adjustments	5
3-2. Electrical Adjustments	5
4. DIAGRAMS	
4-1. Printed Wiring Boards	7
4-2. Schematic Diagram	9
5. EXPLODED VIEWS	
5-1. Front Section	11
5-2. Mechanism Deck Section	12
6. ELECTRICAL PARTS LIST	13

Flexible Circuit Board Repairing

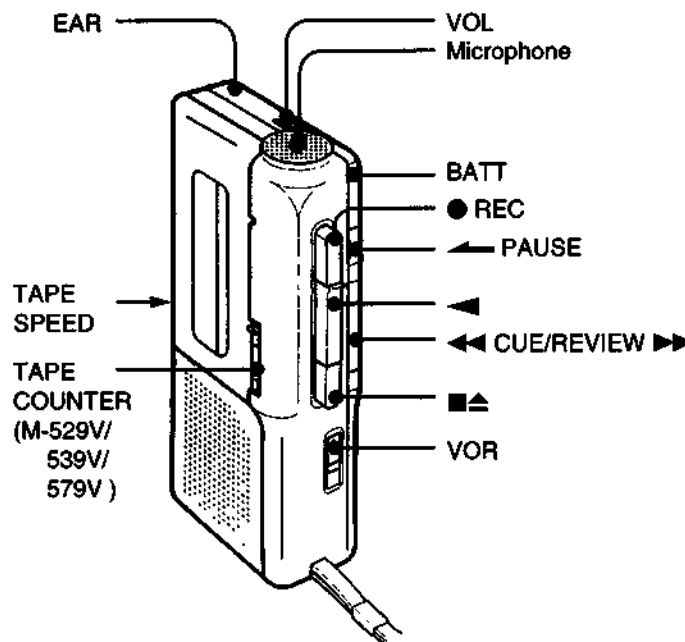
- Keep the temperature of the soldering iron around 270°C during repairing.
- Do not touch the soldering iron on the same conductor of the circuit board (within 3 times).
- Be careful not to apply force on the conductor when soldering or unsoldering.

Notes on chip component replacement

- Never reuse a disconnected chip component.
- Notice that the minus side of a tantalum capacitor may be damaged by heat.

SECTION 1 GENERAL

● Parts Identification



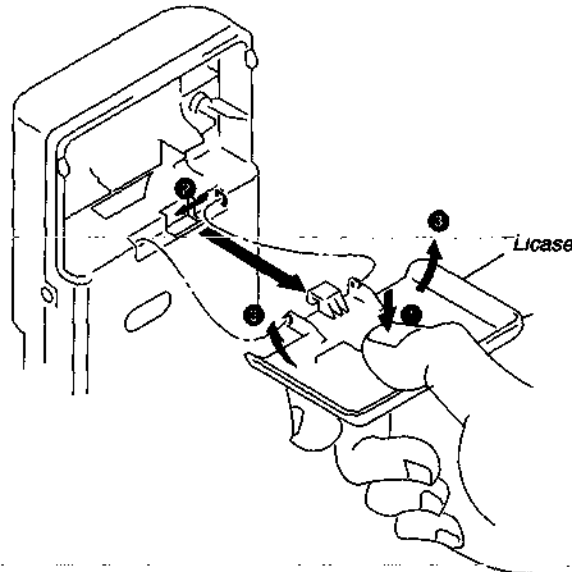
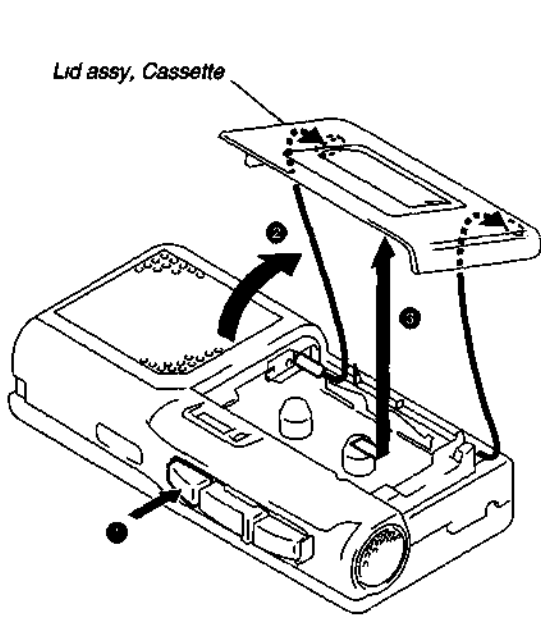
SECTION 2 DISASSEMBLY

● The equipment can be removed using the following procedure

Set → Cassette, Battery Lids → Cabinet (Rear) → MAIN board → Mechanism deck

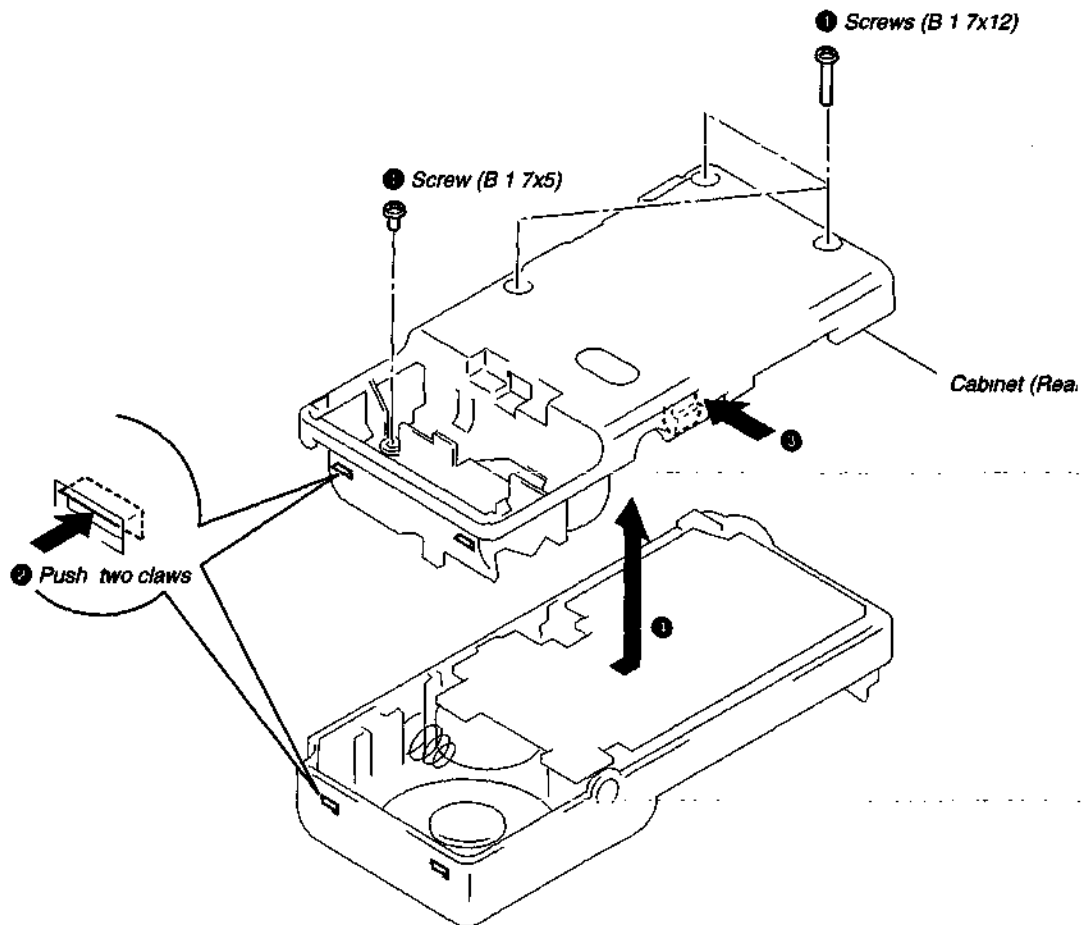
Note Follow the disassembly procedure in the numerical order given

2-1. CASSETTE AND BATTERY LIDS REMOVAL

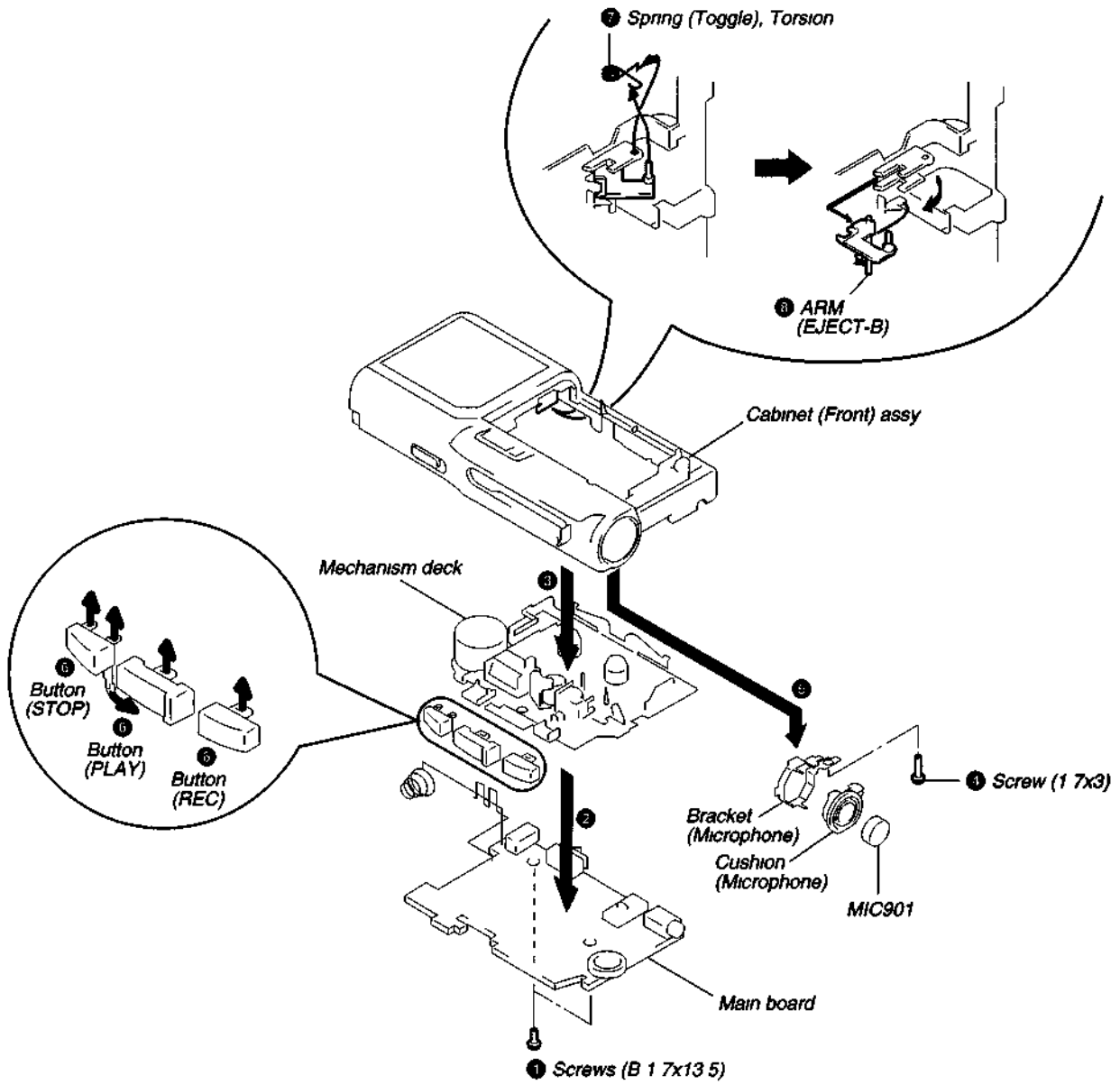


● Press the battery case with your thumb as shown in the figure, loosen and push it all outward

2-2. CABINET REMOVAL



2-3. MECHANISM DECK REMOVAL



SECTION 3 ADJUSTMENTS

3-1. MECHANICAL ADJUSTMENTS

PRECAUTION

- 1 Before adjusting, clean the following parts with a piece of cotton moistened with alcohol

record/playback/erase head	pinch roller
rubber belt	capstan
- 2 Demagnetize the record/playback/erase head using a head demagnetizer
- 3 Do not use a magnetized screwdriver for adjustments
- 4 After adjusting, apply screw-locking compound to the adjusted parts
- 5 Unless specified otherwise, use a specified voltage (3V DC) to perform the adjustments

Torque Measurement

Tape Speed switch 2.4cm/s

Mode	Torque Meter	Meter Reading
Forward	CQ-103M	5 - 13 g • cm (0.07 to 0.180 oz • inch)
Fast Forward	CQ-201M	5 - 13 g • cm (0.07 to 0.180 oz • inch)

Tape Tension Measurement

Tape Speed switch 2.4cm/s

Mode	Torque Meter	Meter Reading
FWD	CQ-403M	more than 30 g (more than 1.06 oz)

3-2. ELECTRICAL ADJUSTMENTS

Standard Output Level

Output terminal	EAR
Load impedance	8Ω
Output level	78mV (-20dB)

Test Tape

Type	Signal	Used for	Tape speed (cm/s)
S-2-A030A	3kHz, -20dB	Azimuth Adjustment	2.4
WS-24	3kHz, -10dB	Tape Speed Adjustment	2.4
WS-12			1.2

0dB=0.775V

PRECAUTION

Record/Playback/Erase Head Azimuth Adjustment

Switch position

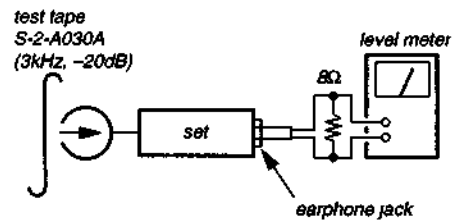
VOLUME Mechanical center

TAPE SPEED switch 2.4cm/s

VOR switch OFF

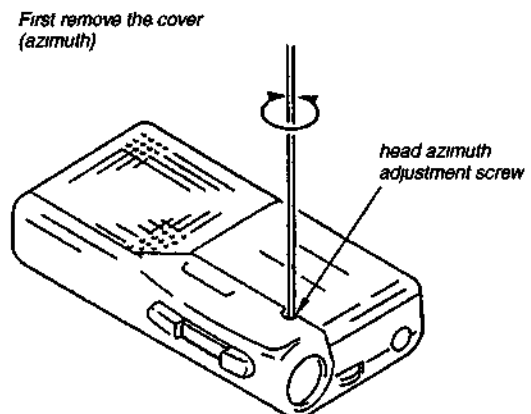
Procedure :

- FWD/REV playback -



- Rotate the screw to adjust level meter reading to the maximum
- Note :** Adjust to the maximum peak though there may be two or three peaks

Adjustment Location :



Tape Speed Adjustment

Switch position

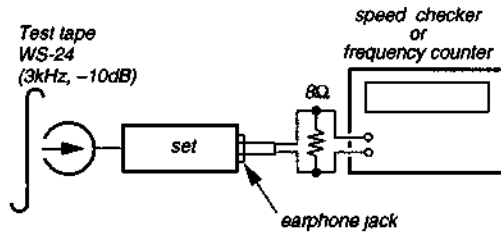
VOLUME Mechanical center

VOR switch OFF

Procedure :

After adjusting the 2.4cm/s speed, adjust the 1.2cm/s speed

- Playback -



Adjustment Value :

Adjustment Part	Speed	Speed checker	Frequency counter
RV601	1.2cm/s	±3%	1,455 - 1,545Hz
RV602	2.4cm/s	±3%	2,910 - 3,090Hz

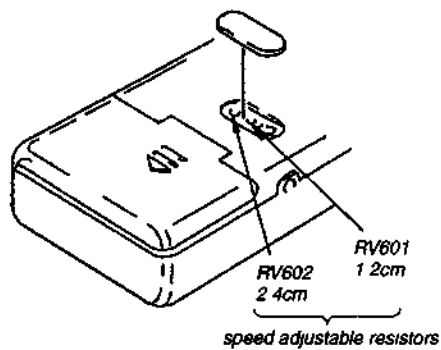
Frequency difference between the beginning and the end of the tape should be within 0.5%

2.4cm/s (15Hz)

1.2cm/s (7.5Hz)

Adjustment Location :

- Back view -



M-425

SERVICE MANUAL



US Model
Canadian Model
AEP Model
UK Model
E Model

Model Name Using Similar Mechanism	NEW
Tape Transport Mechanism Type	MZ-425-14

SPECIFICATIONS

Tape

MICROCASSETTE™ (normal position type)

Recording system

2-track 1-channel monaural

Speaker

Approx. 3.6 cm (1 1/8 in.) dia.

Tape speed

2.4 cm/s (1 1/8 ips), 1.2 cm/s (1/2 ips)

Frequency range

250 - 4,000 Hz

Output

Earphone jack (minijack) for 8 - 300 ohms earphone

Power output

160 mW (at 10% harmonic distortion)

Battery life (recording)

SONY SUM-3 (NS) 5.5H

SONY ALKALINE AM3 (N) 14H

Power requirements

- Two R6 (size AA) batteries: 3 V DC
- Sony AC-E30M AC power adaptor (not supplied):
220 V AC, 50 Hz (European model)
120/220 V AC, 50/60 Hz (model for other countries)
- Sony DCC-E130L car battery cord (not supplied): 12 V car battery

Dimensions (w/h/d)

Approx. 66.7 x 120.8 x 25 mm incl. projecting parts and controls

Mass

Approx. 180 g incl. batteries

Supplied accessories (AEP, UK)

Microcassette tape MC-30 (1)

Design and specifications are subject to change without notice.



MICROCASSETTE™ CORDER
SONY®

SERVICING NOTE

Flexible Circuit Board Repairing

- Keep the temperature of the soldering iron around 270 °C during repairing.
- Do not touch the soldering iron on the same conductor of the circuit board (within 3 times).
- Be careful not to apply force on the conductor when soldering or unsoldering.

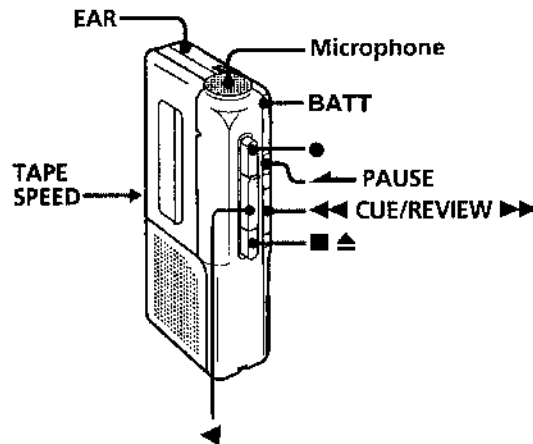
Notes on chip component replacement

- Never reuse a disconnected chip component.
- Notice that the minus side of a tantalum capacitor may be damaged by heat.

SECTION 1 GENERAL

This section is extracted from instruction manual.

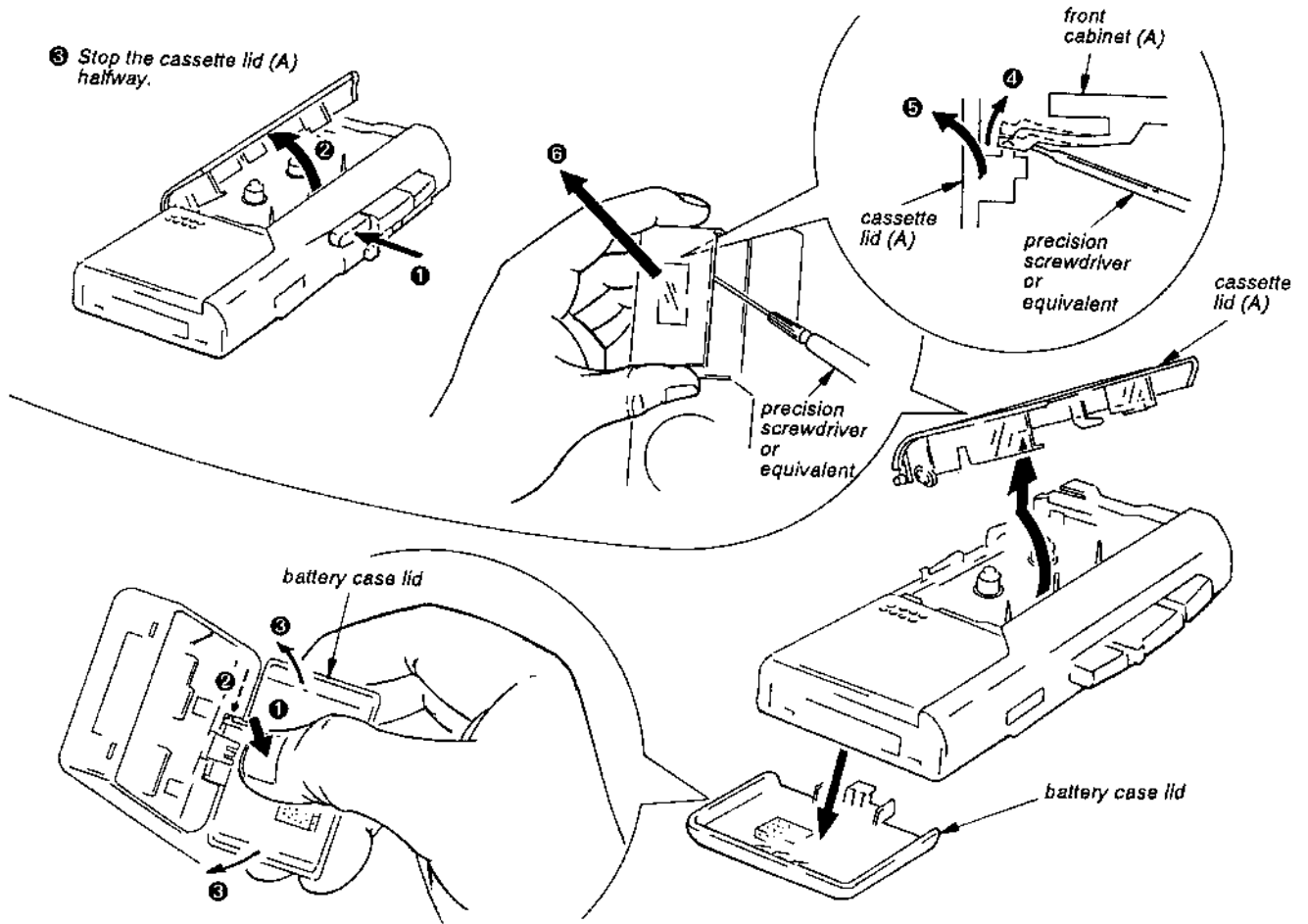
• Parts Identification



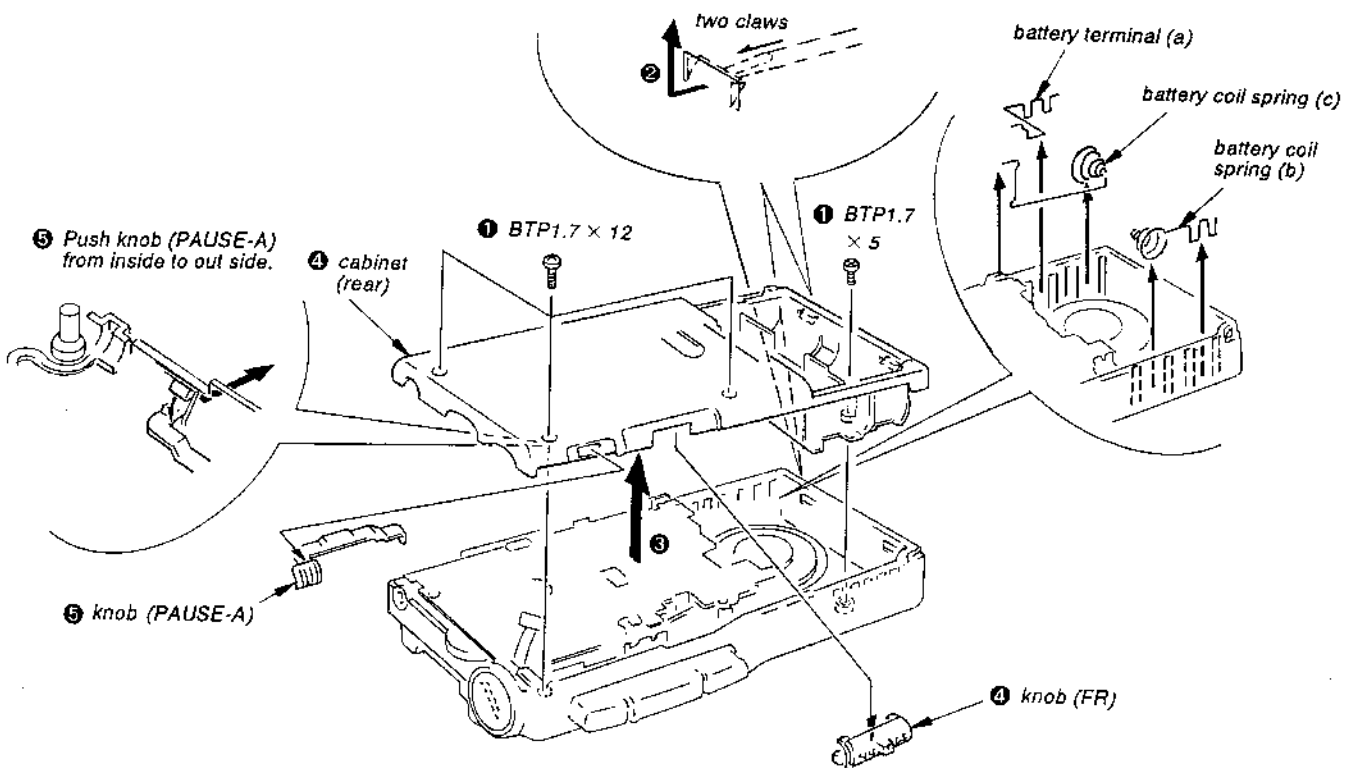
SECTION 2 DISASSEMBLY

Note: Follow the disassembly procedure in the numerical order given.

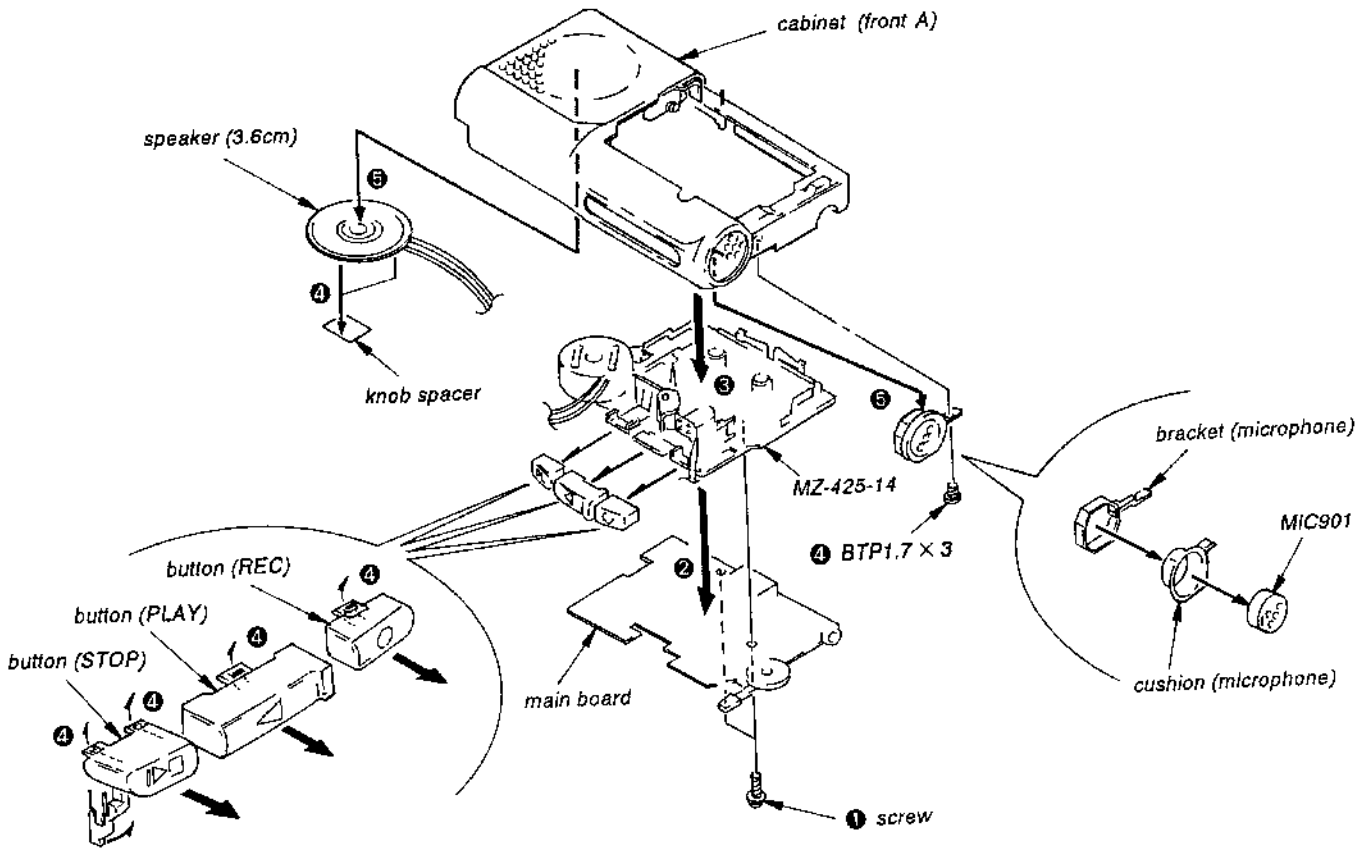
CASSETTE AND BATTERY LIDS



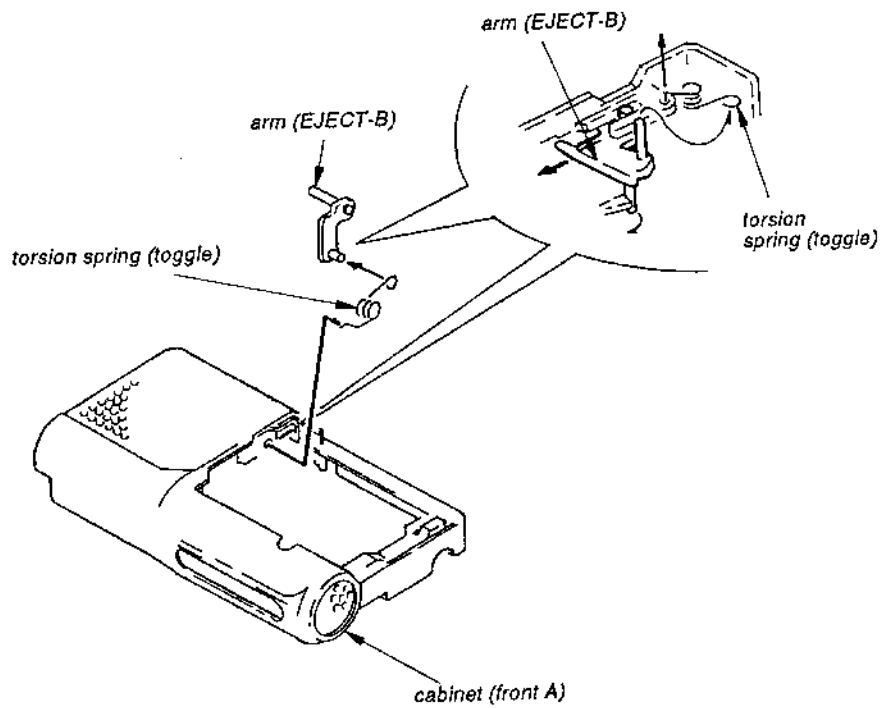
CABINET



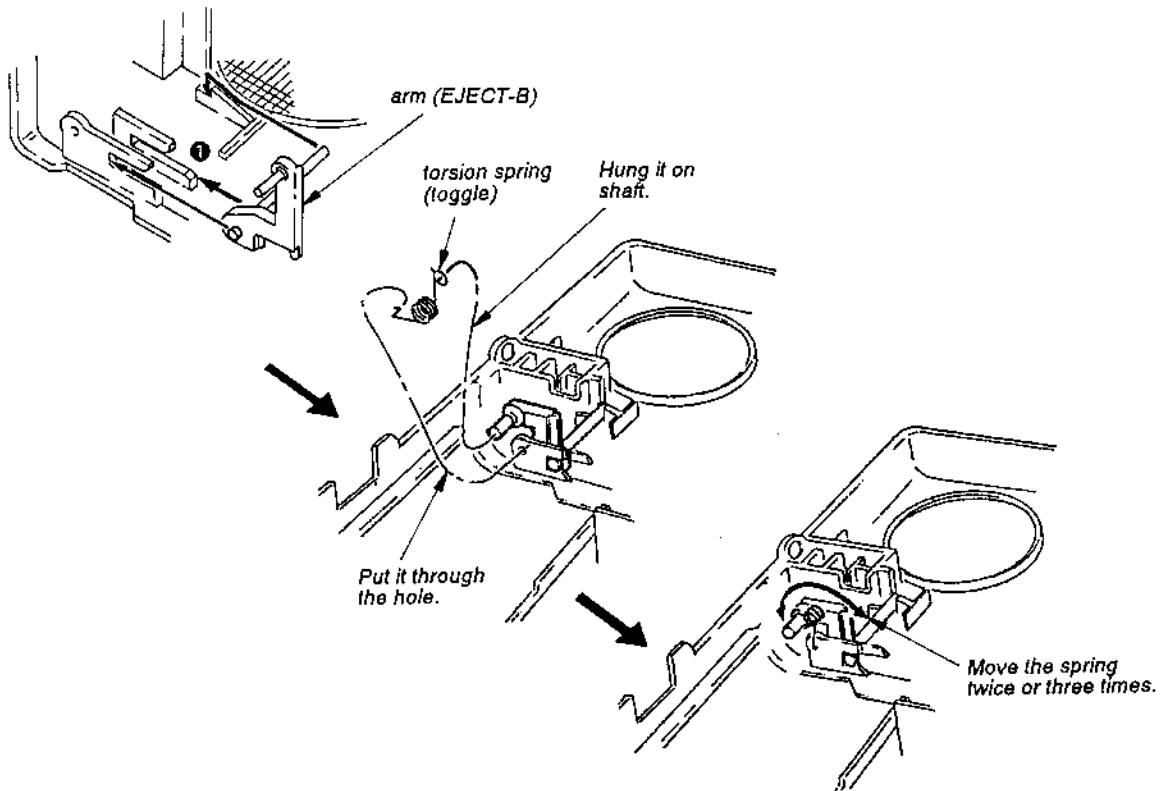
MECHANISM DECK



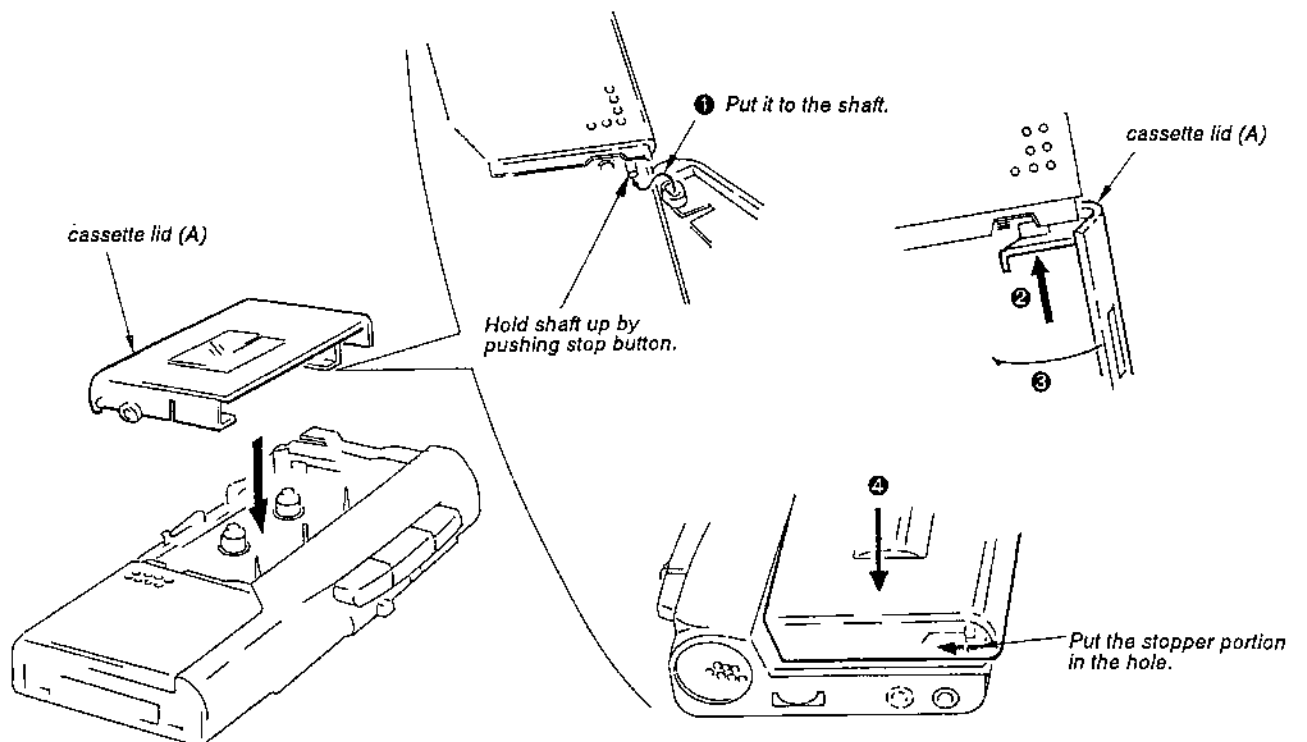
KNOB



ARM (EJECT) FITTING



CASSETTE LID (A) FITTING



SECTION 3 ADJUSTMENTS

2-1. MECHANICAL ADJUSTMENTS AND MEASUREMENT

PRECAUTION

- Clean the following parts with a denatured-alcohol-moistened swab:
record/playback/erase head pinch roller
rubber belts capstan
- Demagnetize the record/playback head with a head demagnetizer.
- Do not use a magnetized screwdriver for the adjustments.
- The adjustments should be performed with the rated power supply voltage unless otherwise noted.
Power supply voltage : 3 Vdc
TAPE SPEED switch : 2.4 cm

Torque Measurement

Torqu	Meter Reading	Torqu Meter
Forward	5-13g • cm (0.07 - 0.180oz • inch)	CQ-103M
Fast Forward	5-13g • cm (0.07 - 0.180oz • inch)	CQ-201M
Rewind	more than 15 g • cm (more than 0.21oz • inch)	CQ-201M

Tape Tension Measurement

Meter	Meter Reading
CQ-403M	more than 30 g (more than 0.42 oz)

2-2. ELECTRICAL ADJUSTMENTS

Test Tape

Type	Signal	Used for	Tape Speed (cm/s)
WS-12	3 kHz, - 10 dB	Tape Speed Adjustment	1.2
WS-24			2.4
S-2-A030	3 kHz, - 20 dB	Head Azimuth Adjustment	2.4

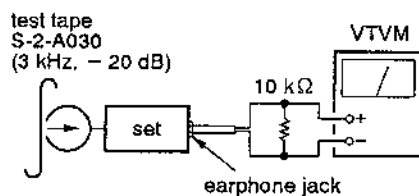
Record/Playback Head Azimuth Adjustment

setting:

VOLUME control : mechanical mid
TAPE SPEED switch : 2.4 cm/s

Procedure:

- Mode : playback

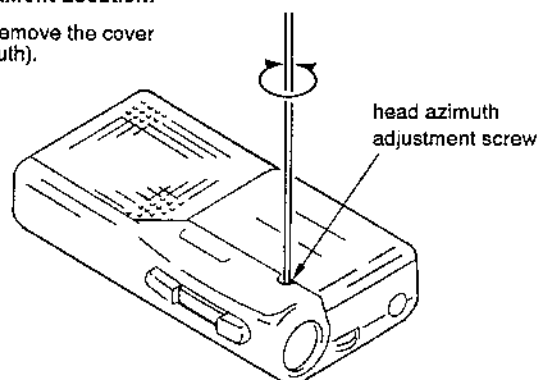


- Turn the adjustment screw to obtain the maximum reading on VTVM.

Note: Several peaks may appear, but the maximum.

Adjustment Location:

First remove the cover (azimuth).



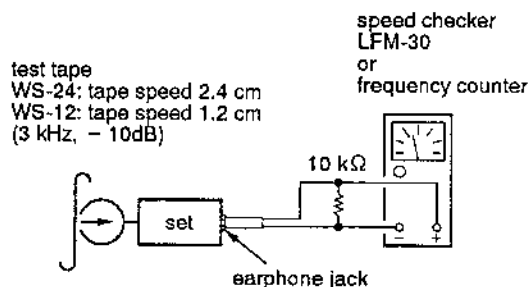
Tape Speed adjustment

Setting:

VOLUME control : mechanical mid

Procedure:

- Reform 2.4 cm/s speed adjustment before 1.2 cm/s speed adjustment mode : playback



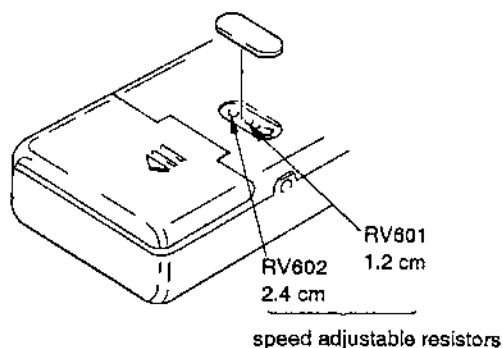
Tape Speed	Speed checker	Frequency counter
2.4 cm/s	± 3%	3,000 ± 90 Hz
1.2 cm/s	± 3%	3,000 ± 90 Hz

Frequency difference between the beginning and the end of the tape should be within 0.5%.

2.4cm/s (15 Hz)

1.2 cm/s (15 Hz)

Adjustment Location:

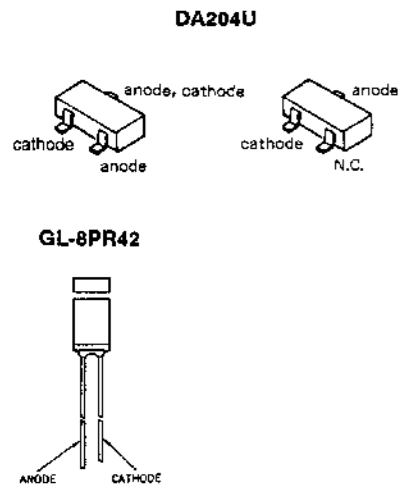


SECTION 4
DIAGRAMS

• Semiconductor Location

Ref. No.	Location
D101	F-12
D102	F-13
D401	K-5
IC101	H-11
IC501	J-18
Q101	D-10
Q102	E-10
Q103	F-10

• Semiconductor Lead Layouts



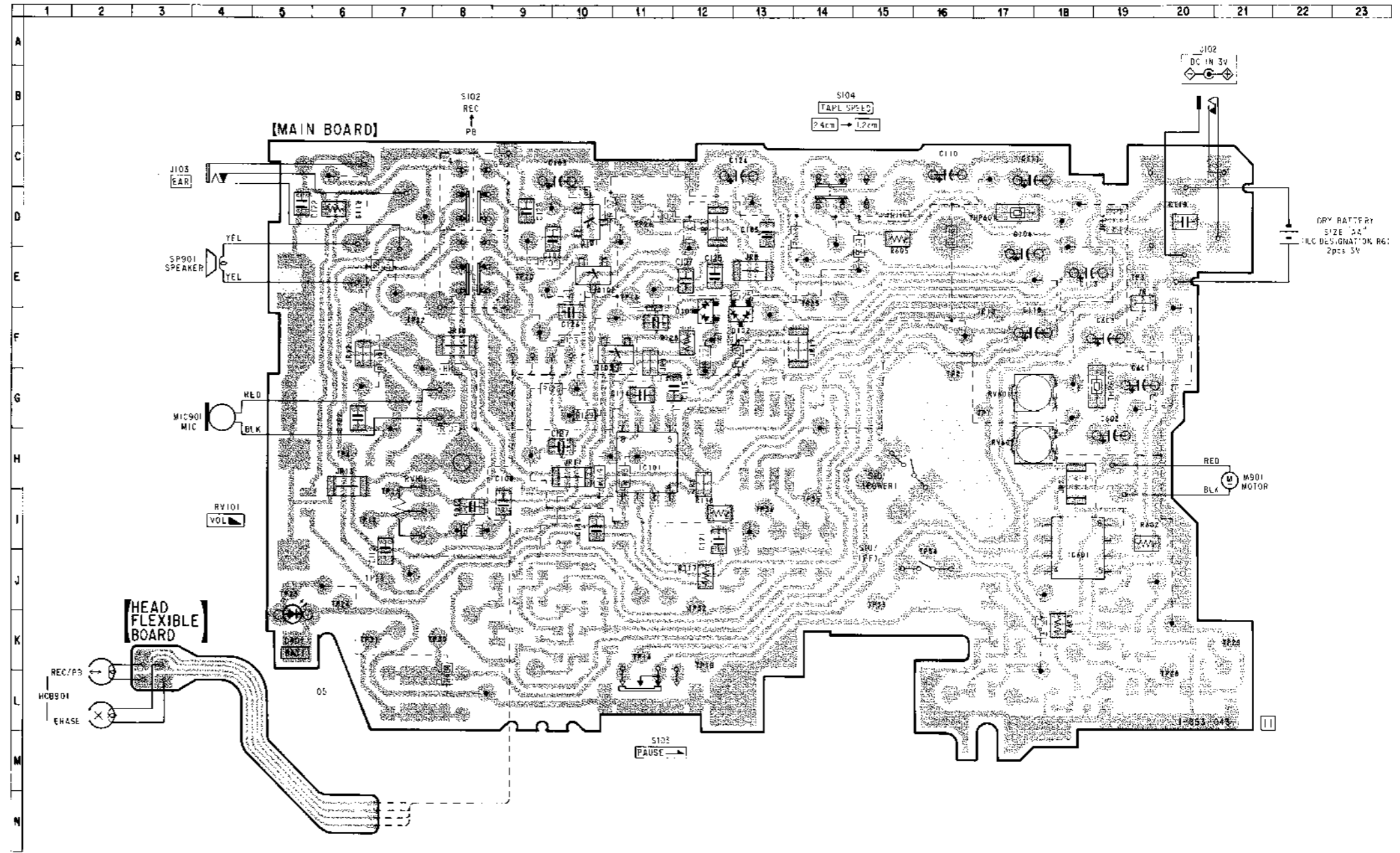
Note on Schematic Diagram:

- All capacitors are in μF unless otherwise noted. pF: μF
- 50 WV or less are not indicated except for electrolytics and tantalums.
- All resistors are in Ω and $\frac{1}{4}$ W or less unless otherwise specified.
- : printed resistor.
- : B + Line.
- : panel designation.
- : adjustment for repair.
- Total current is measured with no cassette installed.
- Power voltage is dc 3 V and fed with regulated dc power supply from external power voltage jack.
- Voltages are dc with respect to ground under no-signal conditions.
no mark : PLAY
() : REC
- Voltages are taken with a VOM (10 M Ω /V).
Voltage variations may be noted due to normal production tolerances.
- Signal path.
 : PB
 : REC

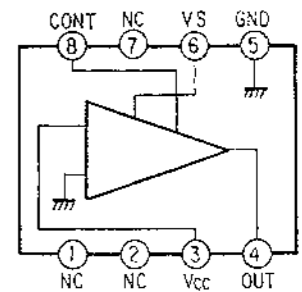
Note on Printed Wiring Board:

- : parts extracted from the component side.
- : Through hole.
- : Pattern from the side which enables seeing.
- : Pattern of the rear side.
- : printed resistor of the rear side.

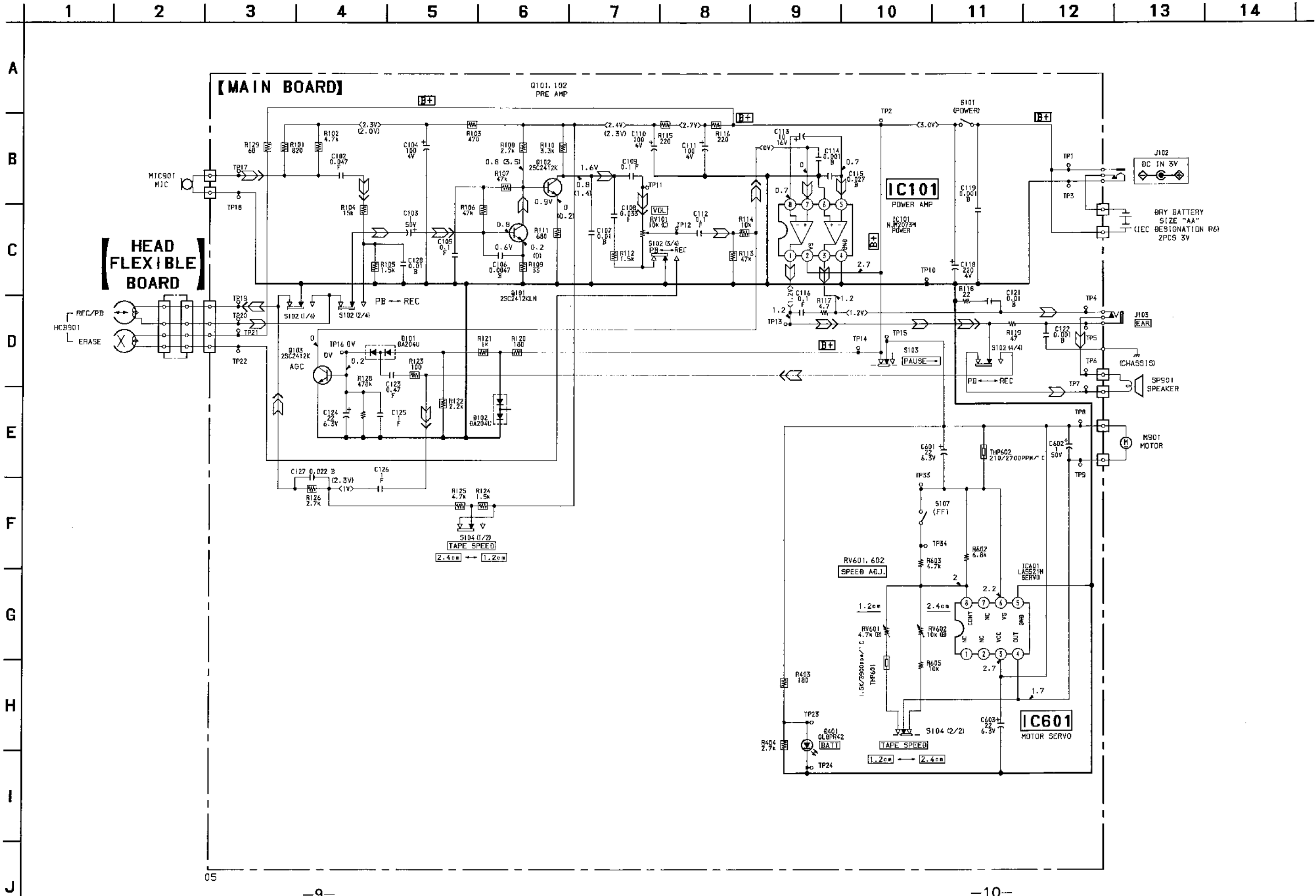
4-1. PRINTED WIRING BOARD



• IC Block Diagram
LA5521M



4-2. SCHEMATIC DIAGRAM



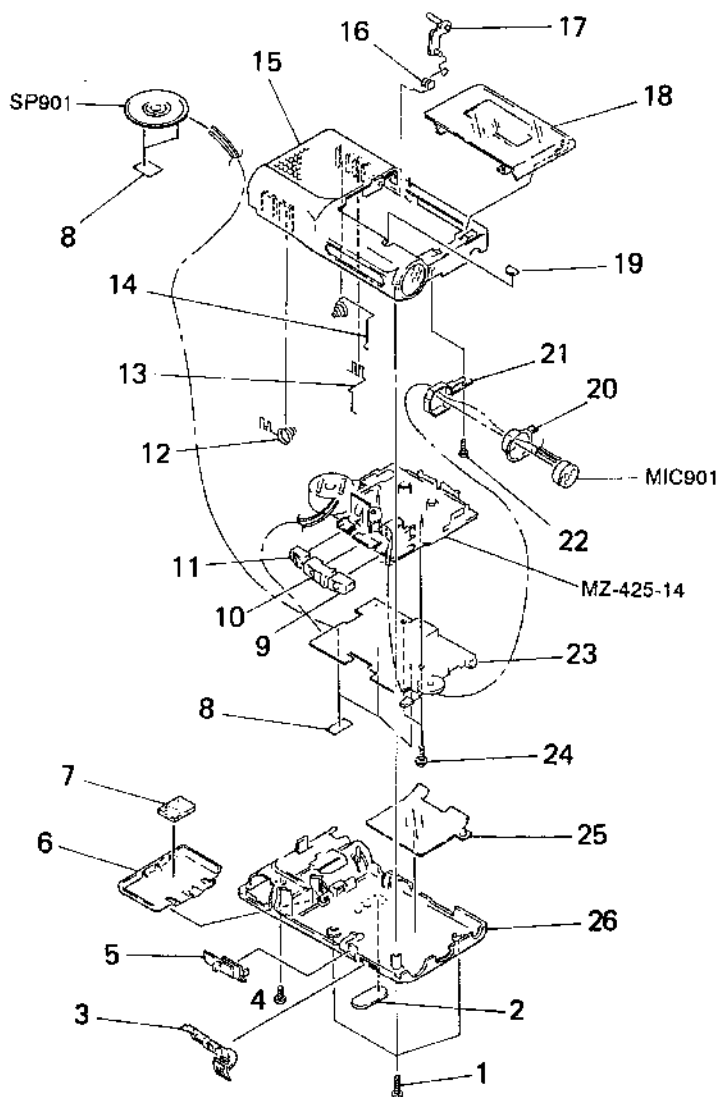
05

SECTION 5 EXPLODED VIEWS

NOTE:

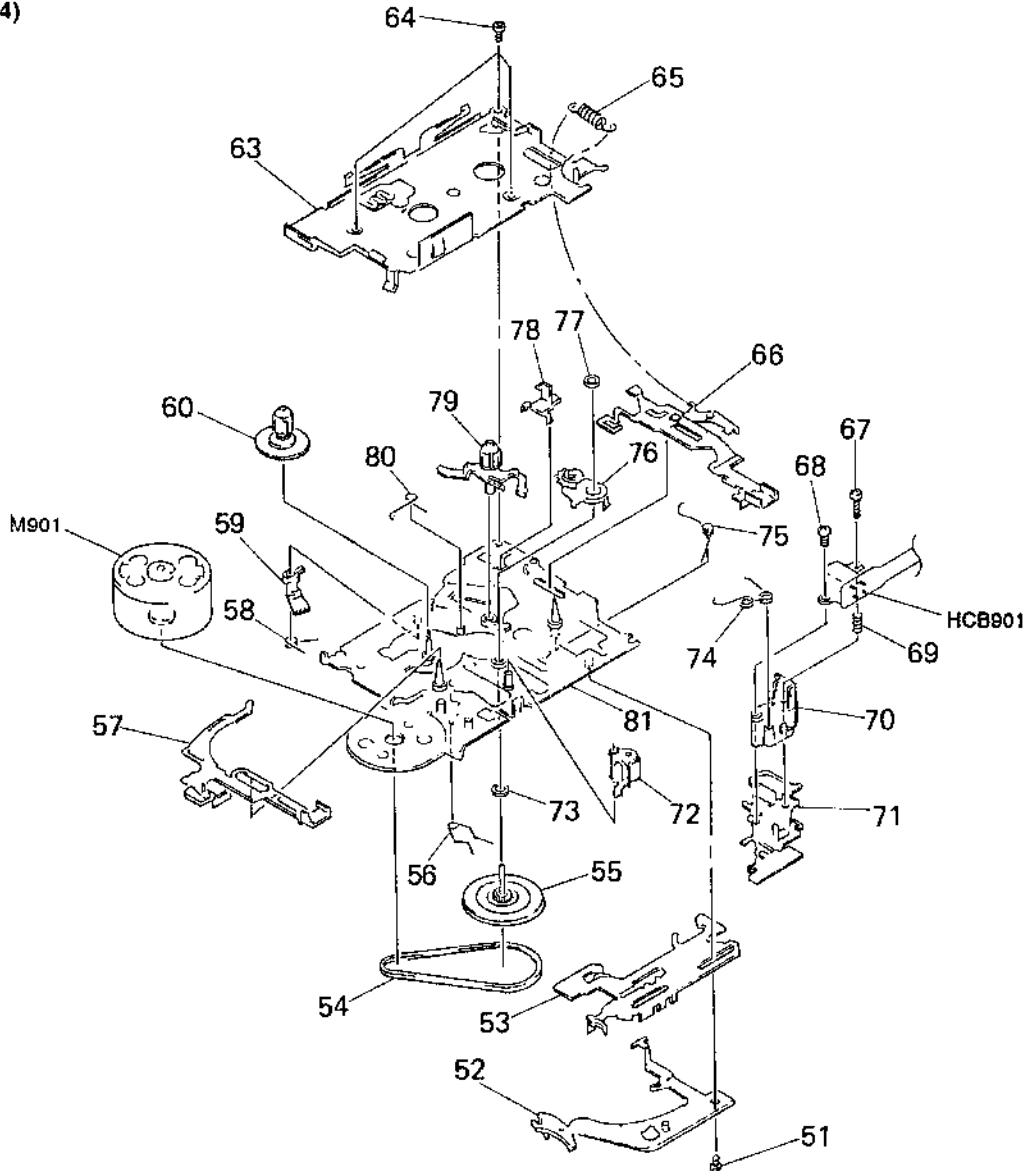
- -XX and -X mean standardized parts, so they may have some difference from the original one.
- Color Indication of Appearance Parts
Example:
KNOB, BALANCE (WHITE) ... (RED)
 ↑ ↑
 Parts Color Cabiner's Color
- Items marked "*" are not stocked since they are seldom required for routine service. Some delay should be anticipated when ordering these items.
- The mechanical parts with no reference number in the exploded views are not supplied.
- Hardware (# mark) list and accessories and packing materials are given in the last of the electrical parts list.

(1) GENERAL SECTION



Ref. No.	Part No.	Description	Remark	Ref. No.	Part No.	Description	Remark
1	3-318-203-51	SCREW (B1. 7X12), TAPPING		15	X-3368-590-1	CABINET (FRONT) (A4) ASSY	
2	3-358-363-11	PLATE, BLIND		16	3-914-931-01	SPRING (TOGGLE), TORSION	
3	3-914-938-01	KNOB (PAUSE-A)		17	3-914-936-01	ARM (EJECT-B)	
4	3-318-203-72	SCREW (B1. 7X5), TAPPING		18	3-914-953-01	LID (A), CASSETTE	
5	3-914-939-01	KNOB (FR)		19	3-914-952-01	COVER (AZIMUTH)	
6	3-914-950-01	LID, BATTERY CASE		* 20	3-914-937-01	CUSHION (MICROPHONE)	
* 7	3-914-930-01	CUSHION (BATTERY CASE LID)		* 21	3-914-949-01	BRACKET (MICROPHONE)	
8	3-831-441-XX	SPACER, KNOB		22	3-318-382-31	SCREW (1. 7X3), TAPPING	
9	3-914-948-01	BUTTON (REC)		* 23	A-3016-593-A	MAIN BOARD, COMPLETE	
10	3-914-947-01	BUTTON (PLAY)		24	3-342-156-51	SCREW	
11	3-914-946-01	BUTTON (STOP)		25	3-914-929-01	PAPER, SHIELD	
12	3-914-934-01	SPRING (B), BATTERY COIL		* 26	3-914-958-01	CABINET (REAR)	
13	3-914-933-01	TERMINAL (A), BATTERY		MIC901	1-542-136-11	MICROPHONE, ELECTRET CONDENSER	
14	3-914-932-01	SPRING (C), BATTERY COIL		SP901	1-544-657-12	SPEAKER (3. 6CM)	

(2) MECHANISM SECTION
(MZ-425-14)



Ref. No.	Part No.	Description	Remark	Ref. No.	Part No.	Description	Remark
51	3-704-243-11	SCREW (P1. 7X2. 0)		69	3-378-792-01	SPRING, COMPRESSION	
* 52	3-914-920-01	PLATE (FR), LOCK		70	3-914-914-01	GUIDE, TAPE	
* 53	3-914-919-01	SLIDER (FR)		* 71	3-914-913-01	LEVER (PLATY)	
54	3-377-420-11	BELT		72	X-3368-585-1	PINCH LEVER ASSY	
55	X-3368-702-1	FLYWHEEL (1. 3) ASSY		73	3-350-945-11	WASHER	
56	3-914-903-01	SPRING (FR), TORSION		74	3-914-902-01	SPRING (P), TORSION	
* 57	X-3368-486-1	LEVER (STOP) ASSY		75	3-914-904-01	SPRING (PFR), TORSION	
58	3-914-906-01	SPRING (S. OFF), TORSION		76	X-3368-584-1	ARM (MIDWAY GEAR) ASSY	
59	3-914-915-01	ARM (S. OFF)		77	3-331-007-21	WASHER	
60	X-3368-582-1	REEL ASSY, T		78	3-914-916-01	ARM (CRAW DETECTION)	
* 63	3-914-923-01	COVER, MD		79	X-3368-587-1	REEL ASSY, S	
64	3-366-892-11	SCREW (M1. 4X1. 4)		80	3-914-907-01	SPRING (MIDWAY GEAR), TORSION	
65	3-914-908-01	SPRING (REC LOCK), TENSION		* 81	X-3368-701-1	CHASSIS (COMP.) ASSY (C), MECH	
* 66	X-3368-583-1	LEVER (REC) ASSY		HCB901	1-500-135-11	HEAD, MAGNETIC (REC/PB/ERASE)	
67	3-703-816-82	SCREW (M1. 4X6), SPECIAL HEAD		M901	1-698-384-11	MOTOR, DC	
68	3-704 245-42	SCREW (P1. 4X3. 0)					

SECTION 6 ELECTRICAL PARTS LIST

MAIN

NOTE:

- Due to standardization, replacements in the parts list may be different from the parts specified in the diagrams or the components used on the set.
- -XX and -X mean standardized parts, so they may have some difference from the original one.
- RESISTORS
All resistors are in ohms.
METAL: Metal-film resistor.
METAL OXIDE: Metal oxide-film resistor.
F: nonflammable

- Items marked "*" are not stocked since they are seldom required for routine service. Some delay should be anticipated when ordering these items.
- SEMICONDUCTORS
In each case, u: μ , for example:
uA.: μ A., uPA.: μ PA.,
uPB.: μ PB., uPC.: μ PC., uPD.: μ PD.
- CAPACITORS
uF: μ F
- COILS
uH: μ H

When indicating parts by reference number, please include the board.

Ref. No.	Part No.	Description	Remark	Ref. No.	Part No.	Description	Remark
*	A-3016-593-A	MAIN BOARD, COMPLETE *****				< IC >	
		< CAPACITOR >		IC101	8-759-701-02	IC NJM2073M	
				IC601	8-759-804-43	IC LA5521M	
C102	1-163-035-00	CERAMIC CHIP	0.047uF	50V		< JACK >	
C103	1-104-390-21	ELECT	1uF	20%	50V		
C104	1-104-401-21	ELECT	100uF	20%	4V	J102	1-580-372-41 JACK, DC (POLARITY UNIFIED TYPE) (DC IN 3V)
C105	1-163-038-00	CERAMIC CHIP	0.1uF		25V	J103	1-766-156-11 JACK (EAR)
C106	1-163-017-00	CERAMIC CHIP	0.0047uF	5%	50V		< JUMPER RESISTOR >
C107	1-164-232-11	CERAMIC CHIP	0.01uF		50V	JR1	1 216 295 00 METAL GLAZE 0 5% 1/10W
C108	1-163-034-00	CERAMIC CHIP	0.033uF		50V	JR2	1-216-296-00 METAL GLAZE 0 5% 1/8W
C109	1-163-038-00	CERAMIC CHIP	0.1uF		25V	JR3	1-216-295-00 METAL GLAZE 0 5% 1/10W
C110	1-104-401-21	ELECT	100uF	20%	4V	JR6	1-216-295-00 METAL GLAZE 0 5% 1/10W
C111	1-104-401-21	ELECT	100uF	20%	4V	JR7	1-216-296-00 METAL GLAZE 0 5% 1/8W
C112	1-163-038-00	CERAMIC CHIP	0.1uF		25V	JR8	1-216-296-00 METAL GLAZE 0 5% 1/8W
C113	1-104-368-21	ELECT	10uF	20%	16V	JR9	1-216-295-00 METAL GLAZE 0 5% 1/10W
C114	1 163 009 11	CERAMIC CHIP	0.001uF	10%	50V	JR10	1-216-296-00 METAL GLAZE 0 5% 1/8W
C115	1-163-986-00	CERAMIC CHIP	0.027uF	10%	25V	JR11	1-216-296-00 METAL GLAZE 0 5% 1/8W
C116	1-163-038-00	CERAMIC CHIP	0.1uF		25V	JR12	1-216-295-00 METAL GLAZE 0 5% 1/10W
C118	1-104-402-21	ELECT	220uF	20%	4V	JR13	1 216 296 00 METAL GLAZE 0 5% 1/8W
C119	1-163-009-11	CERAMIC CHIP	0.001uF	10%	50V	JR14	1-216-295 00 METAL GLAZE 0 5% 1/10W
C121	1-164-232-11	CERAMIC CHIP	0.01uF		50V	JR17	1-216-296-00 METAL GLAZE 0 5% 1/8W
C122	1-163-009-11	CERAMIC CHIP	0.001uF	10%	50V		< TRANSISTOR >
C123	1-164-005-11	CERAMIC CHIP	0.47uF		25V	Q101	8-729-016-80 TRANSISTOR 2SC2412KLN-T146-R
C124	1-104-355-21	ELECT	22uF	20%	6.3V	Q102	8-729-920-74 TRANSISTOR 2SC2412K-QR
C125	1-164-346-11	CERAMIC CHIP	1uF		16V	Q103	8-729-920-74 TRANSISTOR 2SC2412K-QR
C126	1-164-346-11	CERAMIC CHIP	1uF		16V		< RESISTOR >
C127	1 163 037-11	CERAMIC CHIP	0.022uF	10%	25V	R101	1-249-416-11 CARBON 820 5% 1/4W F
C128	1-164-232-11	CERAMIC CHIP	0.01uF		50V	R102	1-249-425-11 CARBON 4.7K 5% 1/4W F
C601	1-104-355-21	ELECT	22uF	20%	6.3V	R103	1-249-413-11 CARBON 470 5% 1/4W F
C602	1-104-390-21	ELECT	1uF	20%	50V	R104	1-216-077-00 METAL CHIP 15K 5% 1/10W
C603	1-104-355-21	ELECT	22uF	20%	6.3V	R105	1-216-053-00 METAL CHIP 1.5K 5% 1/10W
		< DIODE >				R106	1-249-437-11 CARBON 47K 5% 1/4W
D101	8-719-941-23	DIODE DA204U				R107	1-249-437-11 CARBON 47K 5% 1/4W
D102	8-719-941-23	DIODE DA204U				R108	1-249-422-11 CARBON 2.7K 5% 1/4W F
D401	8-719-026-62	DIODE GL8PR42 (BATT)				R109	1-249-399-11 CARBON 33 5% 1/4W F

SEE ADDITIONAL INFORMATION

MAIN

Ref. No.	Part No.	Description			Remark
R110	1-249-423-11	CARBON	3.3K	5%	1/4W F
R111	1-249-415-11	CARBON	680	5%	1/4W F
R112	1-216-053-00	METAL CHIP	1.5K	5%	1/10W
R113	1-249-437-11	CARBON	47K	5%	1/4W
R114	1-249-429-11	CARBON	10K	5%	1/4W
R115	1-216-033-00	METAL CHIP	220	5%	1/10W
R116	1-216-033-00	METAL CHIP	220	5%	1/10W
R117	1-216-308-00	METAL CHIP	4.7	5%	1/10W
R118	1-216-009-00	METAL CHIP	22	5%	1/10W
R119	1-216-017-00	METAL CHIP	47	5%	1/10W
R120	1-249-408-11	CARBON	180	5%	1/4W F
R121	1-249-417-11	CARBON	1K	5%	1/4W F
R122	1-249-421-11	CARBON	2.2K	5%	1/4W F
R123	1-247-807-31	CARBON	100	5%	1/4W
R124	1-216-053-00	METAL CHIP	1.5K	5%	1/10W
R125	1-249-425-11	CARBON	4.7K	5%	1/4W F
R126	1-249-422-11	CARBON	2.7K	5%	1/4W F
R128	1-216-113-00	METAL CHIP	470K	5%	1/10W
R129	1-216-021-00	METAL CHIP	68	5%	1/10W
R403	1-249-408-11	CARBON	180	5%	1/4W F
R404	1-249-422-11	CARBON	2.7K	5%	1/4W F
R602	1-216-069-00	METAL CHIP	6.8K	5%	1/10W
R603	1-216-065-00	METAL CHIP	4.7K	5%	1/10W
R605	1-216-073-00	METAL CHIP	10K	5%	1/10W
< VARIABLE RESISTOR >					
RV101	1-237-731-21	RES, VAR, CARBON 10K (VOL)			
RV601	1-238-663-11	RES, ADJ, CARBON 4.7K			
RV602	1-223-586-11	RES, ADJ, CARBON 10K			
< SWITCH >					
S101	1-572-688-11	SWITCH, PUSH (1 KEY) (POWER)			
S102	1-692-999-11	SWITCH, SLIDE (REC/PB)			
S103	1-571-275-31	SWITCH, SLIDE (PAUSE)			
S104	1-571-478-11	SWITCH, SLIDE (TAPE SPED)			
S107	1-572-688-11	SWITCH, PUSH (1 KEY) (FF)			
< POSITIVE THERMISTOR >					
THP601	1-808-956-11	THERMISTOR, POSITIVE			
THP602	1-809-757-11	THERMISTOR, POSITIVE			

MISCELLANEOUS					

HCB901	1-500-135-11	HEAD, MAGNETIC (REC/PB/ERASE)			
M901	1-698-384-11	MOTOR, DC			
MIC901	1-542-136-11	MICROPHONE, ELECTRET CONDENSER			
SP901	1-544-657-12	SPEAKER (3.6CM)			

Ref. No.	Part No.	Description	Remark
		ACCESSORIES & PACKING MATERIALS	

	3-758-981-61	MANUAL, INSTRUCTION (ENGLISH, FRENCH, SPANISH, PORTUGUESE) (AEP, UK, E)	
	3-758-981-71	MANUAL, INSTRUCTION (GERMAN, DUTCH, SWEDISH, ITALIAN) (AEP)	
	3-758-981-81	MANUAL, INSTRUCTION (ENGLISH) (US, Canadian)	
	3-758-981-91	MANUAL, INSTRUCTION (FRENCH) (Canadian)	
*	3-916-680-01	INDIVIDUAL CARTON (AEP, UK)	
*	3-916-682-01	INDIVIDUAL CARTON (E)	
*	3-916-688-11	CUSHION	

M-425

SONY. SERVICE MANUAL

US Model
Canadian Model
AEP Model
UK Model
E Model

SUPPLEMENT-1

File this supplement with the service manual.

Subject :

1. Addition of Instruction Manual for AEP Model
2. Addition of Mexican Model

(ENG-96006)

1. Addition of Instruction Manual for AEP Model

• ACCESSORIES & PACKING MATERIALS

Page	Ref. No.	Part No.	Description
14	-	3-810-462-21	MANUAL, INSTRUCTION (ENGLISH, FRENCH, SPANISH, DUTCH)

2. Addition of Mexican Model

Mexican model have been added.

There are the same as E model which is not described in this supplement-1. Refer to M-425 original service manual (9-959-543-11) for the other informations.

• ACCESSORIES & PACKING MATERIALS

Page	Ref. No.	E model		Mexican model	
		Part No.	Description	Part No.	Description
14	-	3-758-981-61	MANUAL, INSTRUCTION (ENGLISH, FRENCH, SPANISH, PORTUGUESE)	3-810-462-21	MANUAL, INSTRUCTION (ENGLISH, FRENCH, SPANISH, DUTCH)
	*	3-916-682-01	INDIVIDUAL CARTON	_____	_____
	*	3-916-688-11	CUSHION	_____	_____
	*	_____	_____	3-916-760-01	CUSHION (TOP)
	*	_____	_____	3-916-761-01	CUSHION (BOTTOM)

- Items marked "*" are not stocked since they are seldom required for routine service. Some delay should be anticipated when ordering these items.

M-425

SONY.

SERVICE MANUAL

*US Model
Canadian Model
AEP Model
UK Model
E Model*

SUPPLEMENT-2

File this supplement with the service manual.

Subject: Change of MAIN board (EXCEPT US, Canadian Model)

• **New/former Discrimination**

	Former Type	New Type
Main Board Part No.	1-653-043-00	1-664-894-00

The New Type Main Board of information, refer to the M-437 service manual (9-923-127-11) previously issued.

M-425

SONY.

SERVICE MANUAL

*US Model
Canadian Model
AEP Model
UK Model
E Model*

SUPPLEMENT-3

File this supplement with the service manual.

Subject: Addition of East European Model

Addition of East European Model

East European model have been added.

There are the same as AEP model which is not described in this supplement-3.

Refer to M-425 original service manual (9-959-543-11) for the other informations.

• ACCESSORIES & PACKING MATERIALS

Page	AEP model				East European model			
	Ref. No.	Part No.	Description	Remark	Ref. No.	Part No.	Description	Remark
14		3-758-981-61	MANUAL, INSTRUCTION (ENGLISH, FRENCH, SPANISH, PORTUGUESE)			3-858-067-35	MANUAL, INSTRUCTION (ENGLISH, GERMAN, SPANISH, PORTUGUESE)	
		3-758-981-71	MANUAL, INSTRUCTION (GERMAN, DUTCH, SWEDISH, ITALIAN)			3-858-067-91	MANUAL, INSTRUCTION (RUSSIAN, HUNGARIAN, CZECH, POLISH)	