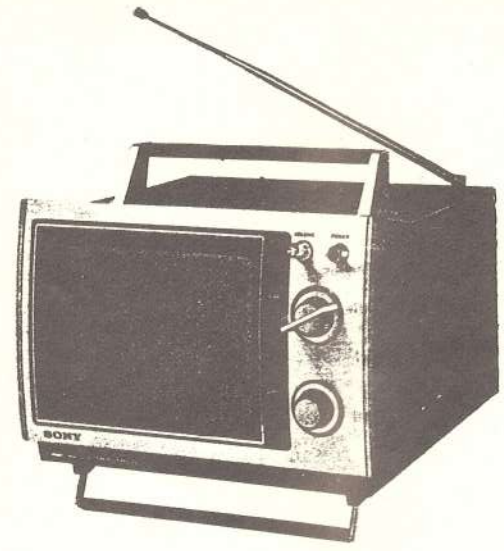
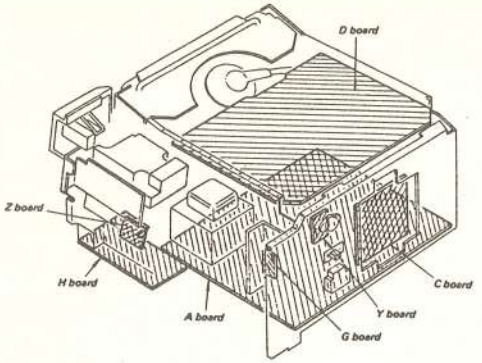


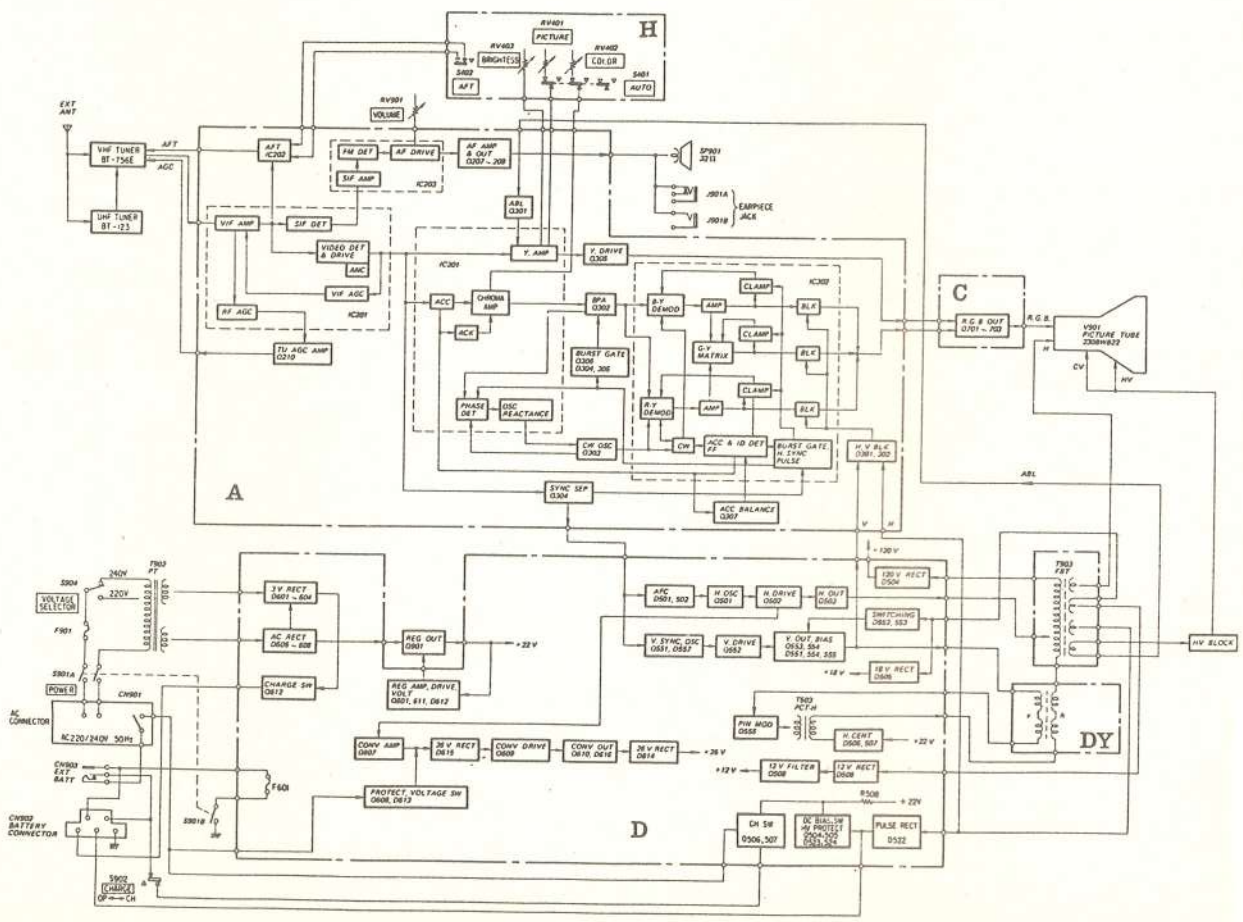
KV-9000E

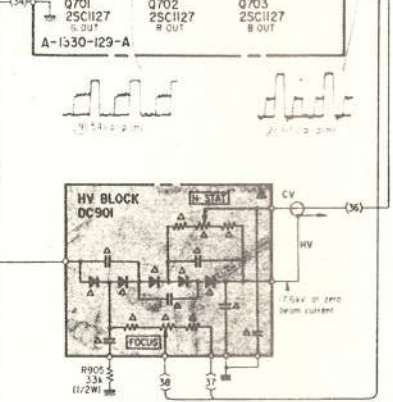
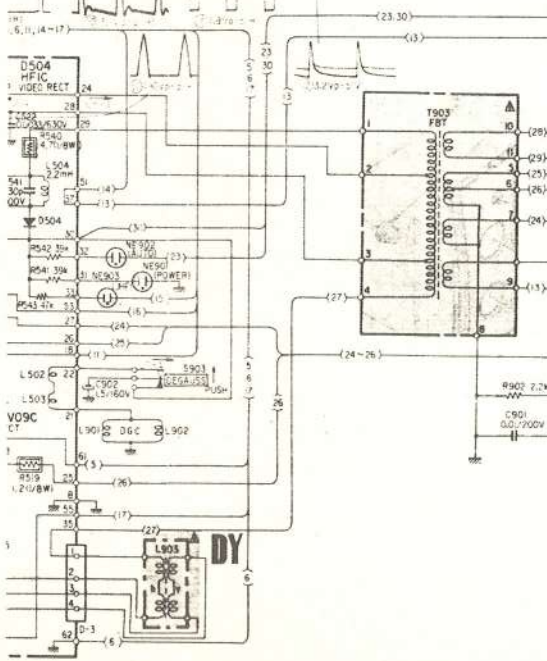
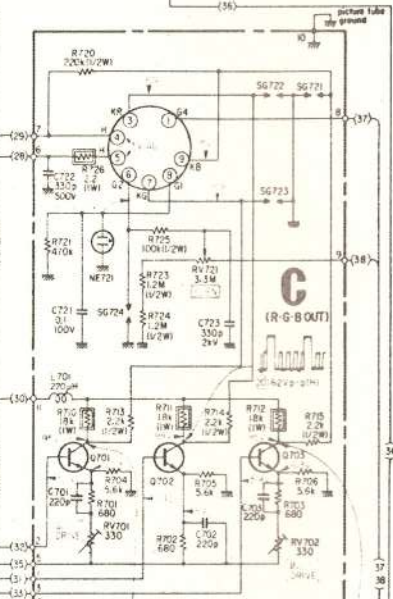
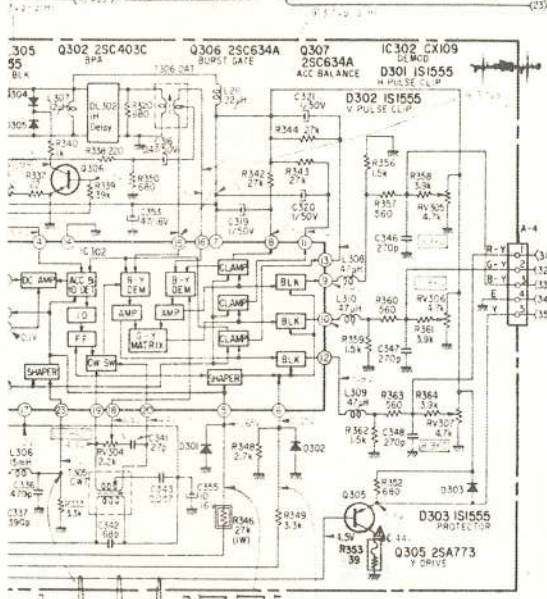
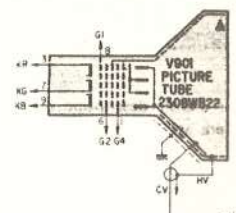
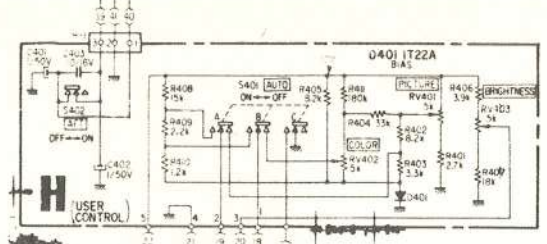
BP-80E



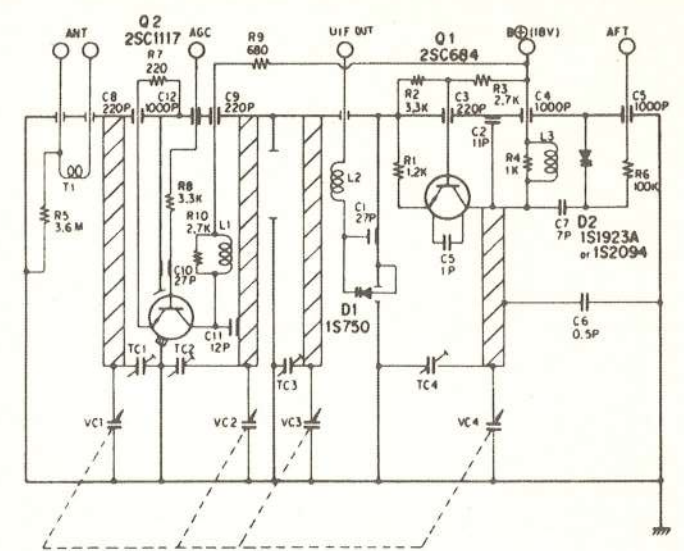
SPECIFICATIONS

- Television System:** CCIR system B, G and H
- Color System:** PAL
- Picture Tube:** 22 cm, 9" (measured diagonally), 70° deflection TRINITRON system
- Semiconductors:** 1 FET, 38 transistors, 46 diodes and 6 ICs
- Aerial:** VHF | 75Ω unbalanced
UHF | (coaxial aerial socket)
- Channel Coverage:** VHF channels: E2-12
UHF channels: E21-68
- Intermediate Frequencies:** Picture i-f carrier: 38.9 MHz
Color subcarrier: 34.47 MHz
Sound i-f carrier: 33.4 MHz
- Sound System:** 5.5 MHz intercarrier
Output power: 0.9W (at 10% harmonic distortion)
Speaker: 10 cm (4 inches) dia, 32 Ω
- Video System:** RGB cathode drive
- Automatic Controls:** ABL (automatic brightness limiter)
ACC (automatic color control)
ACK (automatic color killer)
AFC (automatic fine tuning)
AFT (automatic frequency control)
AGC (automatic gain control)
ANC (automatic noise canceller)
AVR (automatic voltage regulator)
APC (automatic phase control)
- Anode Voltage:** 17.6 kV at zero beam current
- Power Requirements:** 220/240 V AC, 50 Hz
12 V DC
24 V DC
- Power Consumption:** 46W AC
36W DC (12V)
30W DC (24V)
- Dimensions:** 300 (w) x 270 (h) x 343 (d) mm
11½ (w) x 10¾ (h) x 13½ (d) inches
- Net Weight:** 9 kg (20 lb)
- Accessories Supplied:** Earpiece (ME-20B)
Instruction manual
Power cord

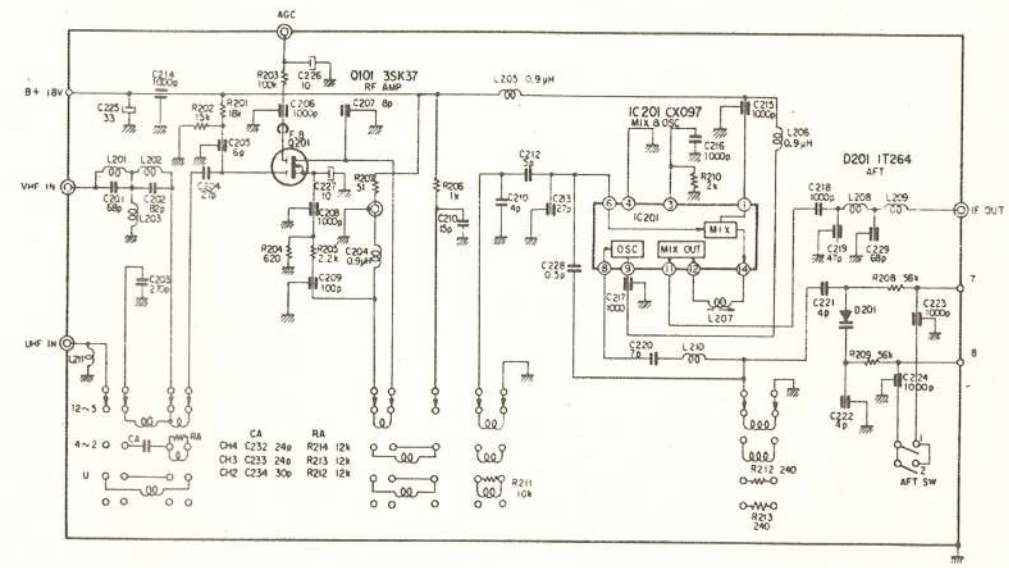




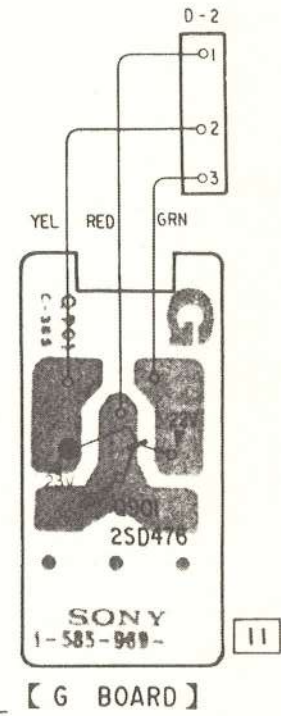
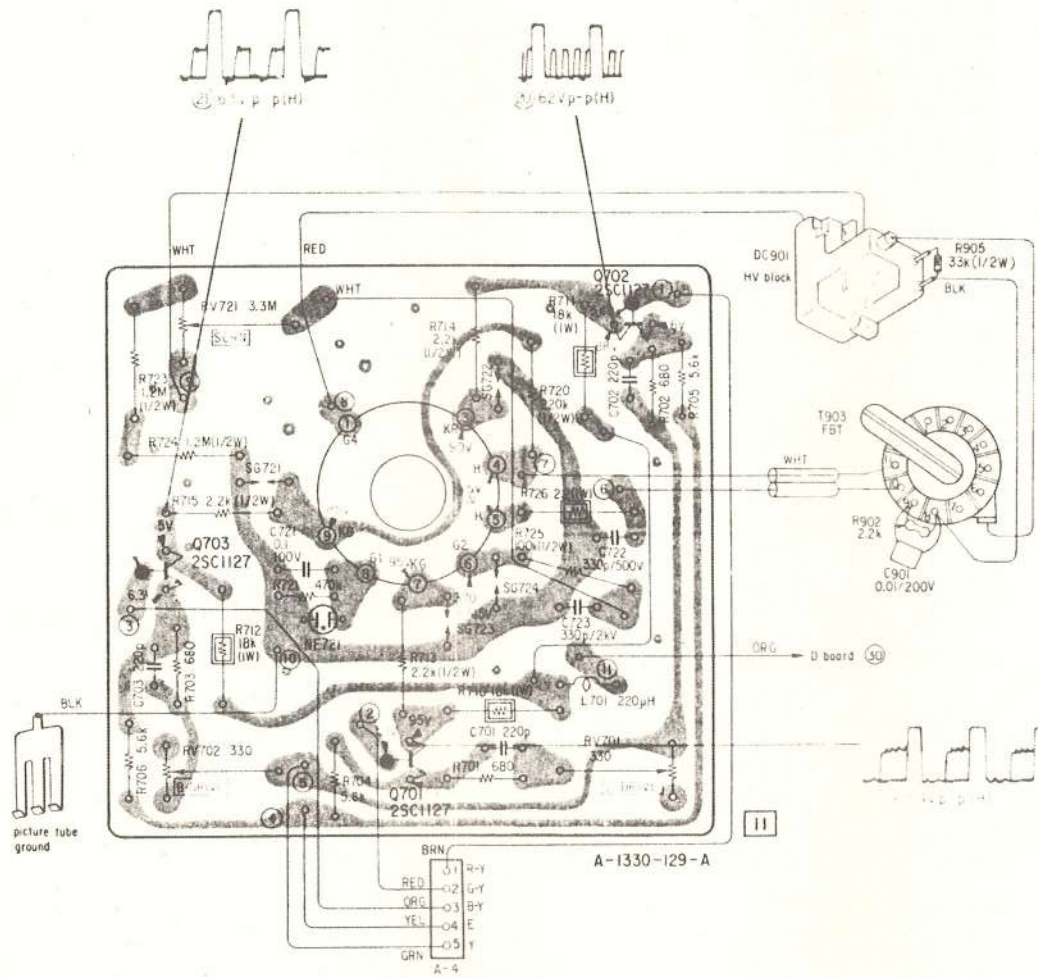
**- UHF tuner -
BT-123**



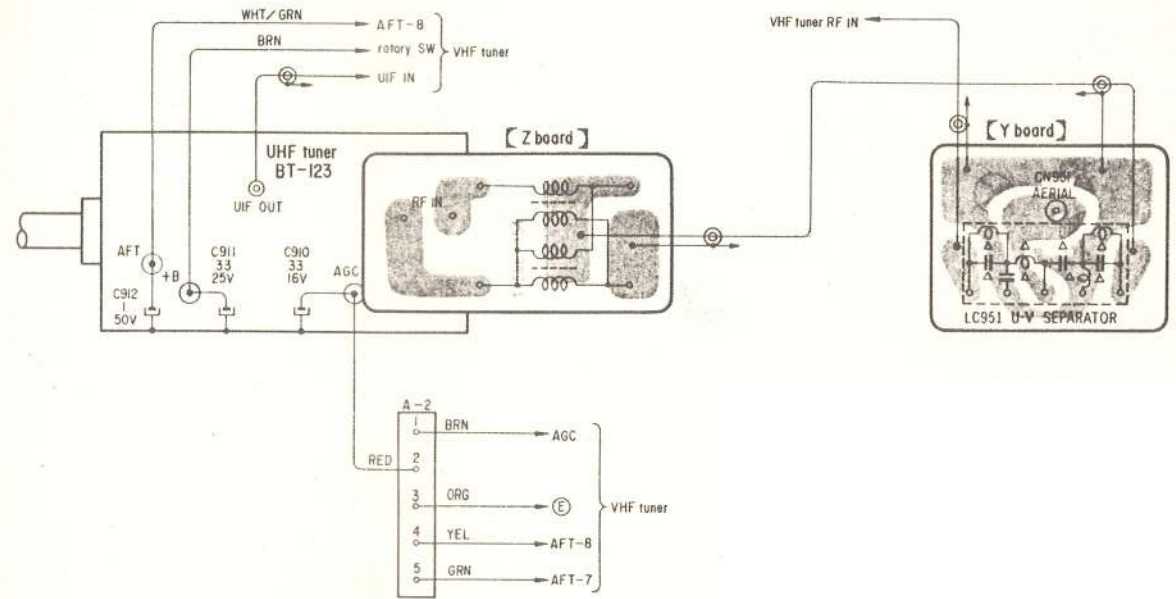
**- VHF tuner -
BT-756E**



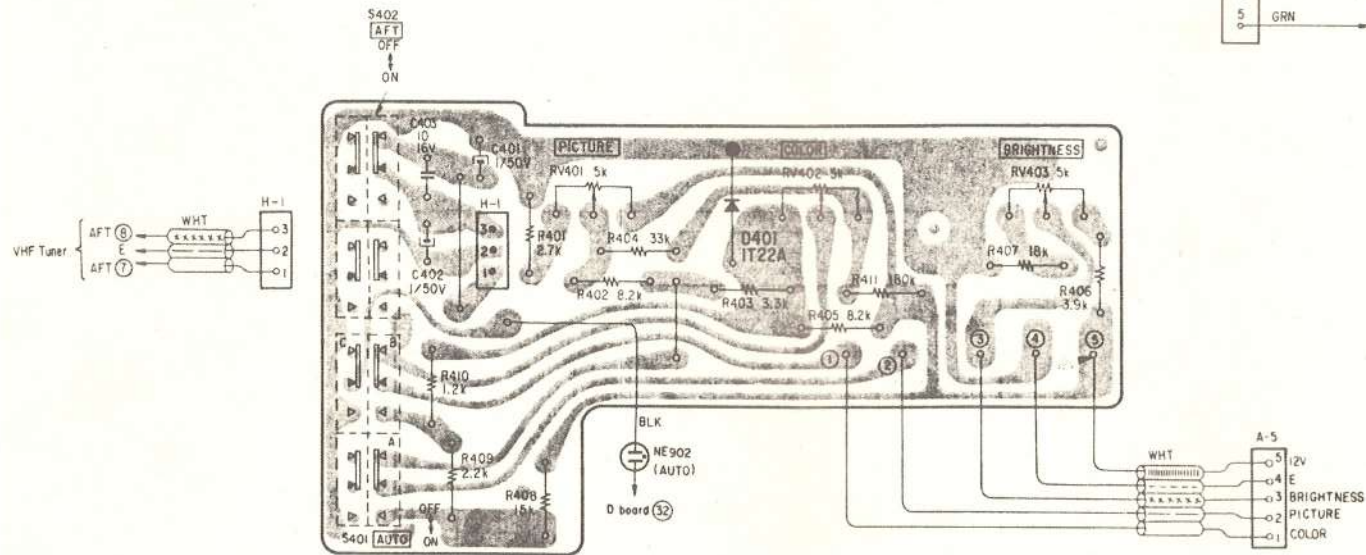
— C Board —



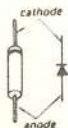
- Z and Y Boards -



- H Board -

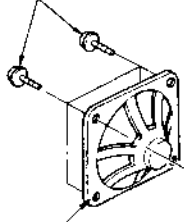


1T22A



Note: ● ○ : parts extracted from the component side.

4-303-483-00 (A)
Screw, self-tapping; 3 x 8



1-502-655-00 (E)
Speaker, 32Ω (SP901)

P2.6 x 8,
self-tapping

Shield, picture tube,
side

Shield, picture tube,
upper

1-507-047-00 (B)
Jack, EARPIECE (LJ901)

4-303-473-00 (A)
Support, circuit board

Chassis Assy, side, left

Shield, picture tube,
lower

4-309-336-00 (B)
Spring

1-425-968-00 (F)
Coil, degaussing;
DGC (L901, 902)

Shield, picture tube,
side

4-303-473-00 (A)
Support, circuit board

Chassis Assy, right

8-983-091-30
A Board, complete

4-313-732-00 (A)
Hinge, circuit board



8-983-091-31
D Board, complete

4-325-019-00 (A)
Knob, V HOLD control

4-313-732-00 (A)
Hinge, circuit board

1-586-288-00 (B)
Y Board

Supplied with switch.

P2.6 x 8,
self-tapping



1-526-563-00 (C)
Socket, serial terminal

1-516-046-00 (C)
Switch, 2-POS,
CHARGE (S902)

1-526-585-00 (D)
Cap, electrolytic

1-516-291-00 (D)
Switch, pushbutton;
DEGAUSS (S903)

1-507-465-00 (C)
Socket, EXT BATTERY
(CN903)

Chassis, rear

1-509-510-12 (C)
Socket, 2-POS, AC power (CN901)

1-818-176-00 (E)
Switch, VOLTAGE SELECTOR
(S904) lock

4-326-510-01 (A)
Spacer, battery socket

1-442-864-41 (F)
Transformer, power;
PZ (T902)

4-326-512-00 (A)
Holder

4-303-813-00 (A)
Bushings

Nut, 3mm dia

BV4 x 8,
self-tapping

4-325-072-00 (A)
Spacer, mic

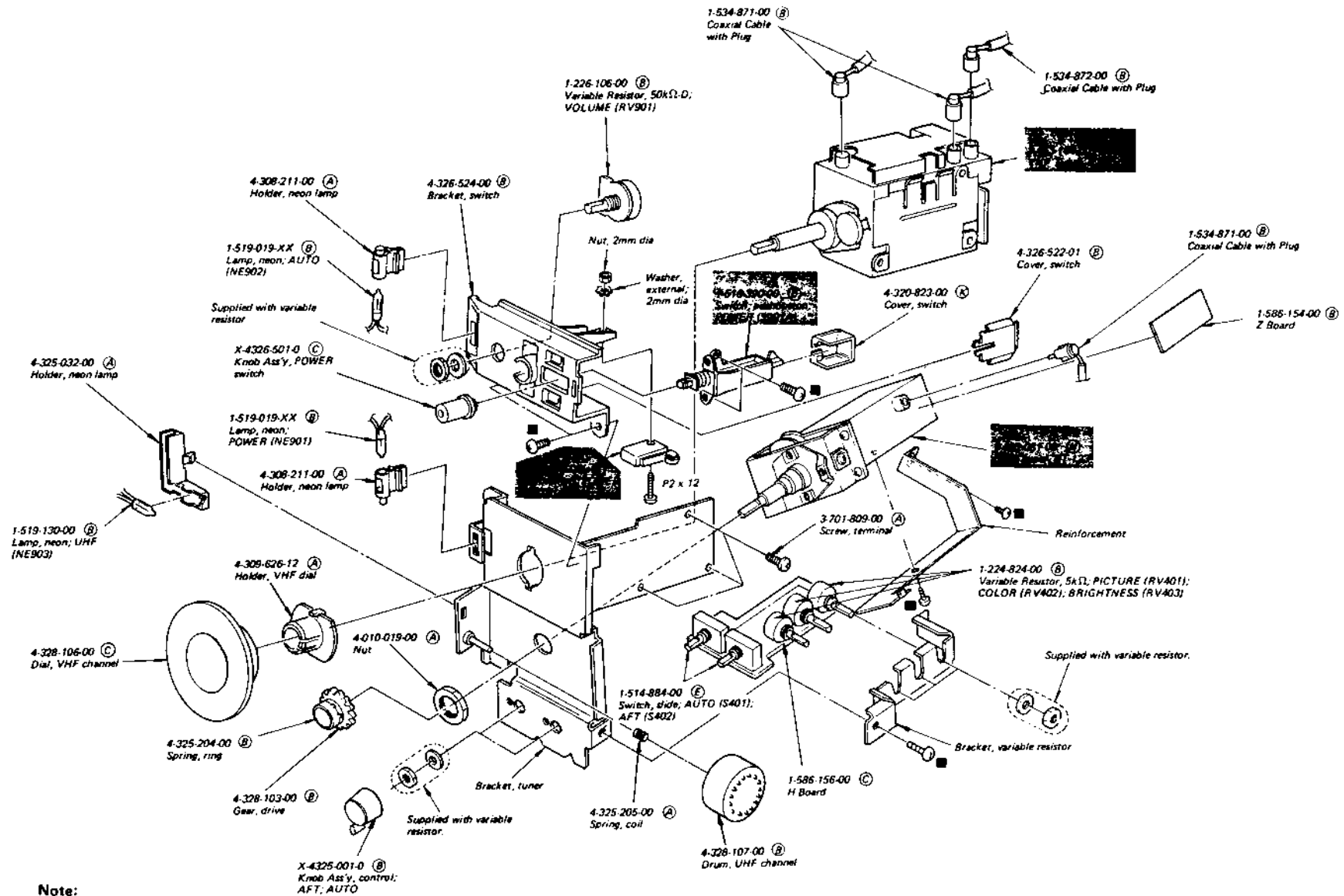
PS3 x 12

Heat Sink

1-585-969-00 (B)
G Board

1-533-102-XX (B)
Holder, fuse




1-533-102-XX (B)
Holder, fuse



Note:

- Items with no part number and/or no description are not stocked because they are seldom required for routine service.
- All screws are Phillips (cross recess) type unless otherwise noted.
- ■: BV 3 x 8, self-tapping

ELECTRICAL PARTS LIST

Ref. No.	Part No.	Description	Ref. No.	Part No.	Description	Ref. No.	Part No.	Description	Ref. No.	Part No.	Description		
TUNER AND CIRCUIT BOARDS			Q612	(C) 2SA773	Miscellaneous			T201	1-409-225-00	(B) VIFT-T1			
			Q701-703	(D) 2SC1127	Th201	1-800-198-XX	(A) Thermistor, S-1250	T202	1-425-613-00	(B) VIFT-1			
1-585-969-00	(B) G Board		Q901	(D) 2SD476	Th551	1-800-070-XX	(A) Thermistor, TH-4700	T203	1-409-270-00	(B) VIFT-T2, 31.5MHz			
1-586-154-00	(B) Z Board		Diodes			COILS			T204	1-409-214-00	(B) VIFT-T3, 41.5MHz		
1-586-156-00	(C) H Board		D201, 202	(B) 1S1555	All coils are microinductors unless otherwise noted.						T205	1-403-947-00	(B) VIFT-2
1-586-288-00	(B) Y Board		D301-305	(B) 1S1555	L201	1-407-184-XX	(A) 3.3μH	T206	1-404-047-00	(B) VIFT-3			
8-983-069-31	(K) C Board, complete		D401	(B) 1T22A	L202	1-407-171-XX	(A) 150μH	T207	1-404-046-00	(B) VIFT-4			
8-983-091-30	A Board, complete		D501, 502	(B) 1S1555	L204	1-407-684-00	(A) 1.8μH	T208	1-409-294-00	(C) VIFT-T4, 33.5MHz			
8-983-091-31	D Board, complete		D503	(B) HF1	L205, 206	1-407-189-XX	(A) 8.2μH	T209	1-404-044-00	(B) VIFT-5			
SEMICONDUCTORS			D504	(B) HF1C	L207	1-407-157-XX	(A) 10μH	T210	1-404-045-00	(B) VIFT-6			
Transistors			D505	(B) V09C	L208	1-407-189-XX	(A) 8.2μH	T211	1-409-235-00	(B) 5.5MHz Trap			
Q207	(B) 2SC634A		D506, 507	(B) 1S1555	L209, 210	1-407-187-XX	(A) 5.6μH	T212	1-403-843-00	(B) SIFT-2			
Q208	(C) 2SA773		D508	(B) V09C	L211	1-407-161-XX	(A) 22μH	T213	1-409-269-00	(B) VIFT-T5, 43.5MHz			
Q209	(C) 2SC1475		D509	(B) RD12E	L301	1-407-178-XX	(A) 1μH	T214	1-409-269-00	(B) VIFT-T5, 43.5MHz			
Q210	(C) 2SA678		D552	(B) HF1Z	L302	1-407-706-00	(A) 120μH	T215	1-404-048-00	(B) AFT-3			
Q211	(B) 2SC634A		D523	(B) 1S1555	L305	1-407-189-XX	(A) 8.2μH	T217	1-403-810-00	(B) AFT-1			
Q301	(B) 2SC634A		D524	(B) EQA01-07S	L306	1-407-208-XX	(B) 15mH	T218	1-403-811-00	(B) AFT-2			
Q302, 303	(B) 2SC403C		D551-553	(B) V06C	L307	1-407-158-XX	(A) 12μH	T302	1-409-193-00	(B) 4.43MHz Trap			
Q304	(C) 2SA678		D545, 555	(B) 1S1555	L308-310	1-407-165-XX	(A) 47μH	T303	1-405-733-00	(B) Automatic Phase Control, APC			
Q305	(C) 2SA773		D601-608	(B) S1B01-02	L501	1-407-191-XX	(B) 470μH	T304	1-425-927-00	(C) Bandpass, BPT			
Q306, 307	(B) 2SC634A		D612	(B) EQA01-06S	L502, 503	1-459-110-00	(B) Dust Core	T305	1-425-928-00	(B) Continuous-wave Oscillator, CWT			
Q501	(C) 2SA678		D613	(B) EQA01-16	L504	1-407-198-XX	(B) 2.1mH	T306	1-404-081-00	(B) Delay Adjustment, DAT			
Q502	(B) 2SC634A		D614	(E) S15H	L505	1-459-196-00	(E) Horizontal Linearity, HLC	T501	1-405-760-00	(B) Horizontal Centering Choke, HCC			
Q503	(F) 2SD625		D615	(B) 1S1555	L507	1-435-056-00	(D) HWC	T502	1-437-021-00	(B) Horizontal Drive, HDT			
Q504	(C) 2SA678		D616	(B) HF1	L602	1-407-365-00	(A) 0.74μH, spook choke	T503	1-421-268-00	(E) Pincushion Correction, PCT-H			
Q505-507	(B) 2SC634A		ICs			L603	1-407-556-00	(B) 6.8μH, spook choke	T601	1-437-021-00	(B) Line Drive, LDT		
Q508	(C) 2SC1475		IC201	(H) CX100D	L701	1-407-709-00	(A) 220μH	T602	1-439-207-00	(F) Line Output, LOT			
Q551, 552	(B) 2SC634A		IC202	(H) MS135P	L901, 902	1-425-968-00	(F) Degaussing, DGC	T901	1-417-014-00	(B) Aerial Matching Transformer			
Q553	(C) 2SC1475		IC203	(F) CX095C				T902					
Q554	(C) 2SA773		IC301	(K) CX108	TRANSFORMERS AND FILTER			CAPACITORS					
Q555	(B) 2SC634A		IC302	(K) CX109	DL301	1-415-101-00	(D) Delay Line	All capacitors are in μF and ceramic unless otherwise noted.					
Q601	(B) 2SC634A					DL302	1-415-131-00	(J) 1H Delay Line	50WV or less are not indicated except for electrolytics.				
Q607	(C) 2SA678								pF = μF, elect = electrolytic				
Q608, 609	(B) 2SC634A					CF201	1-527-263-00	(B) Ceramic Filter	C206	1-102-529-11	(A) 100p		
Q610	(F) 2SC756								C207	1-102-884-11	(A) 33p		
Q611	(B) 2SC634A								C208	1-102-125-11	(A) 0.0047		
									C209, 210	1-102-527-11	(A) 82p		

Ref. No.	Part No.	Description
C211	1-102-125-11	(A) 0.0047
C212	1-121-651-11	(A) 10 16V elect
C213	1-121-403-11	(A) 33 16V elect
C214, 215	1-102-125-11	(A) 0.0047
C216	1-102-973-11	(A) 100p
C217	1-121-651-11	(A) 10 16V elect
C218	1-102-125-11	(A) 0.0047
C219	1-102-973-11	(A) 100p
C220	1-102-663-11	(A) 8p
C221	1-102-858-11	(A) 10p
C222-225	1-102-125-11	(A) 0.0047
C226	1-121-409-11	(A) 47 16V elect
C227	1-121-651-11	(A) 10 16V elect
C228	1-102-125-11	(A) 0.0047
C229	1-121-450-11	(A) 2.2 50V elect
C230	1-108-630-11	(A) 0.022 100V mylar
C231	1-102-114-11	(A) 470p
C232	1-121-391-11	(A) 1 50V elect
C233	1-102-074-11	(A) 0.001
C234	1-102-125-11	(A) 0.0047
C235	1-121-426-11	(B) 470 16V elect
C236	1-101-006-11	(A) 0.047
C237	1-102-125-11	(A) 0.0047
C238	1-101-006-11	(A) 0.047
C239	1-101-884-11	(A) 56p
C240	1-102-666-11	(A) 12p
C241	1-102-074-11	(A) 0.001
C242	1-108-638-11	(B) 0.1 100V mylar
C244	1-121-651-11	(A) 10 16V elect
C245	1-121-391-11	(A) 1 50V elect
C246	1-108-626-11	(A) 0.01 100V mylar
C247	1-121-391-11	(A) 1 50V elect
C248	1-101-361-11	(A) 150p
C249	1-102-882-11	(A) 4p
C250	1-102-116-11	(A) 680p
C252	1-121-398-11	(A) 10 25V elect
C253	1-121-416-11	(B) 100 25V elect
C255, 256	1-102-125-11	(A) 0.0047
C257	1-101-576-11	(A) 1.5p

Ref. No.	Part No.	Description
C258	1-102-525-11	(A) 68p
C259	1-102-774-11	(A) 47p
C261-266	1-102-125-11	(A) 0.0047
C267	1-121-416-11	(B) 100 25V elect
C268	1-102-125-11	(A) 0.0047
C269	1-121-395-11	(A) 4.7 25V elect
C270	1-102-978-11	(A) 220p
C301	1-102-863-11	(A) 82p
C302	1-101-004-11	(A) 0.01
C303, 304	1-102-662-11	(A) 7p
C305	1-121-393-11	(A) 3.3 50V elect
C306	1-121-651-11	(A) 10 16V elect
C308	1-121-391-11	(A) 1 50V elect
C310	1-102-670-11	(A) 18p
C311	1-121-391-11	(A) 1 50V elect
C312	1-101-006-11	(A) 0.047
C313	1-102-668-11	(A) 15p
C314, 315	1-101-004-11	(A) 0.01
C316	1-121-726-11	(A) 0.47 50V elect
C317	1-101-006-11	(A) 0.047
C318	1-101-004-11	(A) 0.01
C319-321	1-121-391-11	(A) 1 50V elect
C323	1-101-361-11	(A) 150p
C324	1-101-004-11	(A) 0.01
C325	1-102-512-11	(A) 16p
C326	1-102-700-11	(A) 82p
C327, 328	1-108-624-11	(A) 0.0068 100V mylar
C329, 330	1-121-726-11	(A) 0.47 50V elect
C331	1-121-391-11	(A) 1 50V elect
C332	1-108-634-11	(A) 0.047 100V mylar
C333	1-108-616-11	(A) 0.0015 100V mylar
C334, 335	1-121-391-11	(A) 1 50V elect
C336	1-102-824-11	(A) 470p
C337	1-102-822-11	(A) 390p
C338	1-101-006-11	(A) 0.047
C339	1-121-651-11	(A) 10 16V elect
C340	1-121-409-11	(A) 47 16V elect
C341	1-102-883-11	(A) 27p
C342	1-102-676-11	(A) 68p

Ref. No.	Part No.	Description
C343	1-101-006-11	(A) 0.047
C346-348	1-102-980-11	(A) 270p
C349, 351	1-121-391-11	(A) 1 50V elect
C353	1-121-409-11	(A) 47 16V elect
C354	1-101-006-11	(A) 0.047
C355	1-121-651-11	(A) 10 16V elect
C401, 402	1-121-391-11	(A) 1 50V elect
C403	1-121-806-11	(B) 10 16V elect (nonpolarized)
C501	1-108-622-11	(A) 0.0047 100V mylar
C502	1-108-632-11	(A) 0.033 100V mylar
C503	1-121-726-11	(A) 0.47 50V elect
C504	1-108-614-11	(A) 0.001 100V mylar
C505	1-102-212-11	(A) 820p 500V
C506	1-108-632-11	(A) 0.033 100V mylar
C507	1-121-392-11	(A) 3.3 25V elect
C508	1-108-638-11	(B) 0.1 100V mylar
C509	1-130-117-11	(B) 0.33 100V polyethylene
C510	1-121-480-11	(A) 22 25V elect
C511	1-130-118-11	(B) 51000p 400V polyethylene
C512	1-102-106-11	(A) 100p
C513, 514	1-121-654-11	(B) 330 25V elect
C515	1-121-972-11	(B) 220 16V elect
C516	1-121-521-11	(B) 330 16V elect
C517	1-121-415-11	(A) 100 16V elect
C518, 519	1-102-106-11	(A) 100p
C520	1-121-391-11	(A) 1 50V elect
C521	1-108-630-11	(A) 0.022 100V mylar
C522	1-129-708-11	(A) 0.0033 630V polyethylene
C523	1-121-391-11	(A) 1 50V elect
C524	1-108-638-11	(B) 0.1 100V mylar
C525	1-121-651-11	(A) 10 16V elect
C526	1-101-002-11	(A) 0.0022
C528	1-102-106-11	(A) 100p
C540	1-121-246-11	(B) 4.7 160V elect
C541	1-102-030-11	(A) 330p 500V
C552	1-108-632-11	(A) 0.033 100V mylar
C553	1-108-638-11	(B) 0.1 100V mylar
C554	1-131-158-11	(B) 10 16V tantalum
C555	1-121-403-11	(A) 33 16V elect

Ref. No.	Part No.	Description
C556	1-121-991-11	(B) 330 16V elect
C557	1-121-403-11	(A) 33 16V elect
C558	1-121-404-11	(A) 33 25V elect
C559	1-123-269-11	(B) 4.7 160V elect
C560	1-108-690-11	(A) 0.0068 200V mylar
C562	1-108-638-11	(B) 0.1 100V mylar
C563	1-121-651-11	(A) 10 16V elect
C564	1-108-632-11	(A) 0.033 100V mylar
C565	1-123-172-11	(B) 2.2 160V elect
C566	1-108-626-11	(A) 0.01 100V mylar
C567	1-108-628-11	(A) 0.015 100V mylar
C568	1-108-620-11	(A) 0.0033 100V mylar
C569	1-121-392-11	(A) 3.3 25V elect
C581	1-108-642-11	(B) 0.22 100V mylar
C582	1-108-630-11	(A) 0.022 100V mylar
C583	1-108-638-11	(B) 0.1 100V mylar
C601	1-121-658-11	(B) 2200 6.3V elect
C602	1-125-154-11	(E) 2200 35V elect
C604	1-101-880-11	(A) 47p
C605	1-121-357-11	(B) 100 35V elect
C606	1-121-422-11	(B) 220 25V elect
C607	1-121-361-11	(B) 470 35V elect
C608	1-108-618-11	(A) 0.0022 100V mylar
C609	1-108-702-11	(B) 0.068 200V mylar
C610	1-102-030-11	(A) 330p 500V
C611-615	1-102-125-11	(A) 0.0047
C617	1-102-961-11	(A) 27p
C618	1-102-115-11	(A) 560p
C619	1-102-106-11	(A) 100p
C701-703	1-102-978-11	(A) 220p
C721	1-108-638-11	(B) 0.1 100V mylar
C722	1-102-030-11	(A) 330p 500V
C723	1-102-155-11	(A) 330p 2kV
C901	1-108-692-11	(A) 0.01 200V mylar
C902	1-123-167-11	(B) 1.5 160V elect
C910	1-121-403-11	(A) 33 16V elect
C911	1-121-404-11	(A) 33 25V elect
C912	1-121-391-11	(A) 1 50V elect

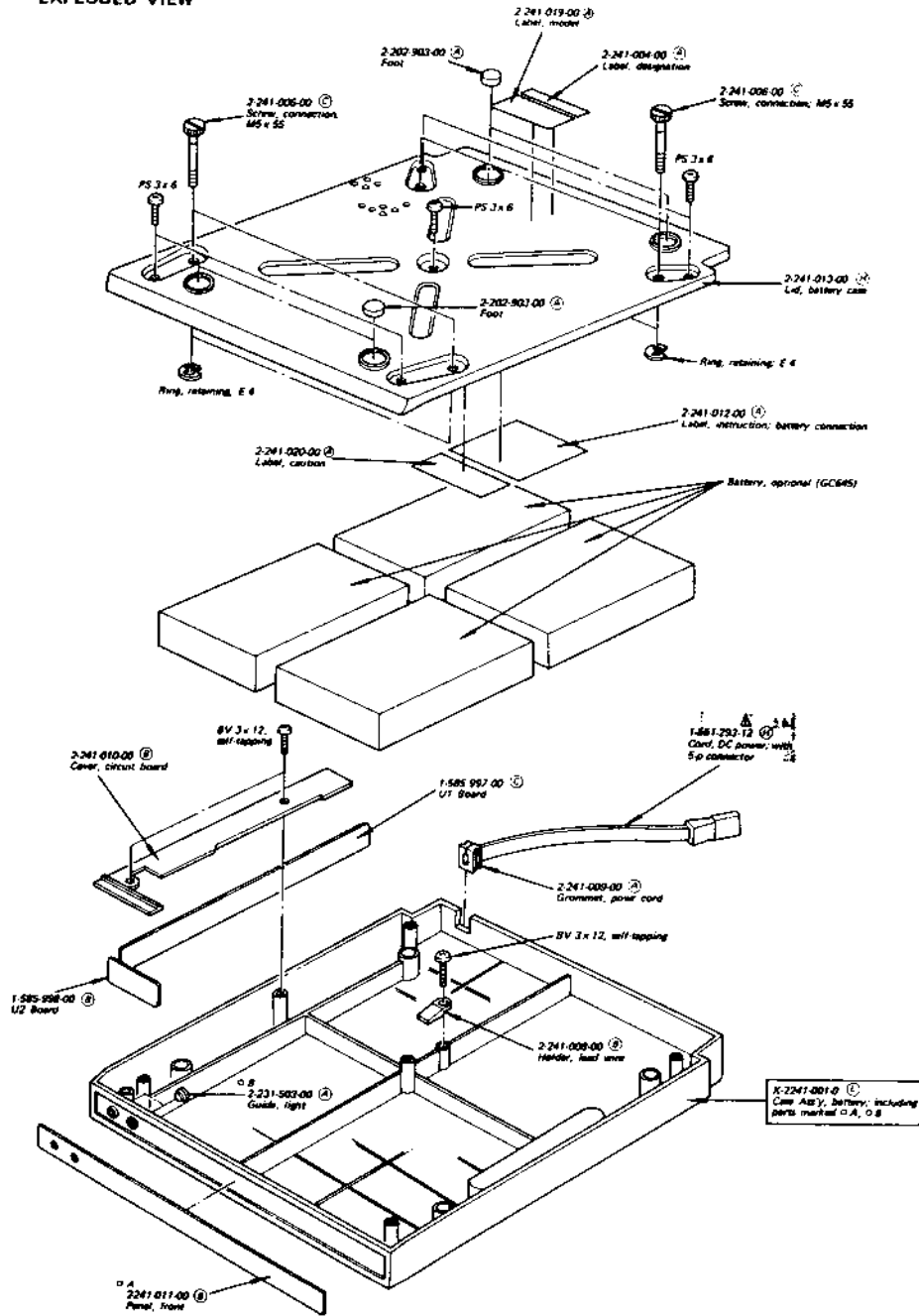
Ref. No.	Part No.	Description
C913	1-121-403-11 (A) 33	16V elect
C914	1-121-416-11 (B) 100	25V elect
CV201	1-141-138-XX (B) 8p	trimmer
RESISTORS		
All resistors are in ohms. Common 1/4W carbon resistors are omitted.		
Refer to the list on the last page for their part numbers.		
All variable and adjustable resistors have characteristic curve B, unless otherwise noted. kΩ = 1000Ω, MΩ = 1000kΩ		
R240	1-212-871-11 (C) 39	1/4W fusible (nonflammable)
R251, 252	1-211-687-11 (A) 3.3	1/4W carbon (nonflammable)
R346	1-213-160-11 (A) 27k	1W metal oxide (nonflammable)
R347	1-212-871-11 (C) 39	1/4W fusible (nonflammable)
R513	1-206-648-11 (A) 220	2W metal oxide (nonflammable)
R514	1-212-366-11 (A) 3.3	1W metal oxide (nonflammable)
R517	1-211-930-11 (A) 33	1/4W carbon (nonflammable)
R519, 522	1-210-859-11 (A) 1.2	1/4W carbon (nonflammable)
R540	1-211-401-11 (A) 4.7	1/4W carbon (nonflammable)
R556	1-211-687-11 (A) 3.3	1/4W carbon (nonflammable)
R565	1-207-460-11 (A) 0.56	1/4W wirewound
R567, 568	1-211-687-11 (A) 3.3	1/4W carbon (nonflammable)
R609	1-212-371-11 (A) 8.2	1W metal oxide (nonflammable)
R631	1-212-861-11 (A) 15	1/4W fusible (nonflammable)
R710-712	1-213-158-11 (A) 18k	1W metal oxide (nonflammable)
R713-715	1-202-581-11 (A) 2.2k	1/4W composition

Ref. No.	Part No.	Description
R720	1-202-629-11 (A) 220k	1/4W composition
R723, 724	1-202-647-11 (A) 1.2M	1/4W composition
R725	1-202-621-11 (A) 100k	1/4W composition
R726	1-212-364-11 (A) 2.2	1W metal oxide (nonflammable)
R901	1-244-858-11 (A) 240	1/4W carbon
R905	1-202-609-11 (A) 33k	1/4W composition
RV201	1-224-640-XX (B) 330, adjustable	U.AGC-2
RV203	1-224-643-XX (B) 2.2k, adjustable	U.AGC-1
RV302	1-226-105-00 (B) 220, adjustable	SMB
RV303	1-224-644-XX (B) 4.7k, adjustable	ACC
RV304	1-224-643-XX (B) 2.2k, adjustable	U.PHASE
RV305	1-224-970-00 (B) 4.7k, adjustable	B.BKG
RV306	1-224-970-00 (B) 4.7k, adjustable	G.BKG
RV307	1-224-970-00 (B) 4.7k, adjustable	R.BKG
RV401	1-224-824-00 (B) 5k, variable	PICTURE
RV402	1-224-824-00 (B) 5k, variable	COLOR
RV403	1-224-824-00 (B) 5k, variable	BRIGHTNESS
RV501	1-223-102-00 (B) 120, adjustable	H.CENT
RV551	1-224-972-00 (B) 20k, variable	V.HOLD
RV552	1-224-645-XX (B) 10k, adjustable	V.SIZE
RV553	1-224-642-XX (B) 1k, adjustable	CENTER
RV571	1-224-646-XX (B) 22k, adjustable	PIN
RV601	1-224-642-XX (B) 1k, adjustable	22V ADJ
RV701	1-224-640-XX (B) 330, adjustable	G.DRIVE
RV702	1-224-640-XX (B) 330, adjustable	B.DRIVE
RV721	1-226-053-00 (C) 3.3M, adjustable	SCRN
RV901	1-226-106-00 (B) 50k-D, variable	VOLUME
MISCELLANEOUS		
CN901	1-509-510-11 (C) Socket, 1/2" AC power	
CN902	1-526-584-11 (C) Socket, 3p, BATTERY	
CN903	1-507-465-00 (C) Socket, EXT BATTERY	
CN951	1-526-563-00 (C) Socket, AERIAL terminal	
DC971	1-499-050-11 (B) High Voltage Rectifier Diode	
F601	1-532-465-00 (C) Fuse, 3.15AT	
F602	1-532-078-00 (B) Fuse, 1AT, 7	
F901	1-532-279-00 (B) Fuse, 0.5AT	

Ref. No.	Part No.	Description
F601	1-532-465-00 (C) Fuse, 3.15AT	
F602	1-532-078-00 (B) Fuse, 1AT, 7	
F901	1-532-279-00 (B) Fuse, 0.5AT	
J901	1-507-047-00 (B) Jack, EARPIECE	
LC951	1-417-060-00 (B) UV Separator	
NE721	1-519-108-XX (B) Lamp, neon	
NE901	1-519-019-XX (B) Lamp, neon; POWER	
NE902	1-519-019-XX (B) Lamp, neon; AUTO	
NE903	1-519-130-00 (B) Lamp, neon; UHF	
S401	1-514-884-00 (E) Switch, slide; AUTO	
S402	1-514-884-00 (E) Switch, slide; AFT	
S901A	1-516-390-00 (E) Switch, pushbutton; POWER	
S901B	1-516-658-00 (E) Microswitch, POWER	
S902	1-516-046-00 (C) Switch, slide; CHARGE	
S903	1-516-251-00 (D) Switch, pushbutton; DEGAUSS	
S904	1-516-174-00 (C) Switch, VOLTAGE SELECTOR	
SG721-724	1-519-063-XX (B) Spark Gap	
SP901	1-502-655-00 (H) Speaker, 32Ω	
V901	8-737-701-05 (Z) Picture Tube, 230BWB22	
X301	1-527-274-00 (G) Crystal	
	1-452-126-00 (B) Magnet, disk	
	1-501-152-00 (G) Aerial, telescopic	
	1-508-459-00 (C) Connector, coaxial; aerial	
	1-509-545-00 (B) Socket, picture tube	
	1-526-585-00 (H) Cap, anode	
	1-533-102-XX (B) Holder, fuse	
	1-534-871-00 (B) Coaxial Cable with Plug	
	1-534-872-00 (B) Coaxial Cable with Plug	
	1-536-401-XX (A) Terminal Strip, 2L1	

PACKING MATERIALS AND ACCESSORIES	
Part No.	Description
1-504-034-32 (C)	Earpiece, ME-20B
1-534-840-XX (B)	Component
4-325-044-00 (B)	Sheet, protection
4-325-045-00 (C)	Cushion, right
4-325-046-00 (C)	Cushion, left
4-328-110-00 (F)	Carton
4-495-675-11 (F)	Manual, instruction

EXPLODED VIEW



BP-80E

(Optional Accessory)



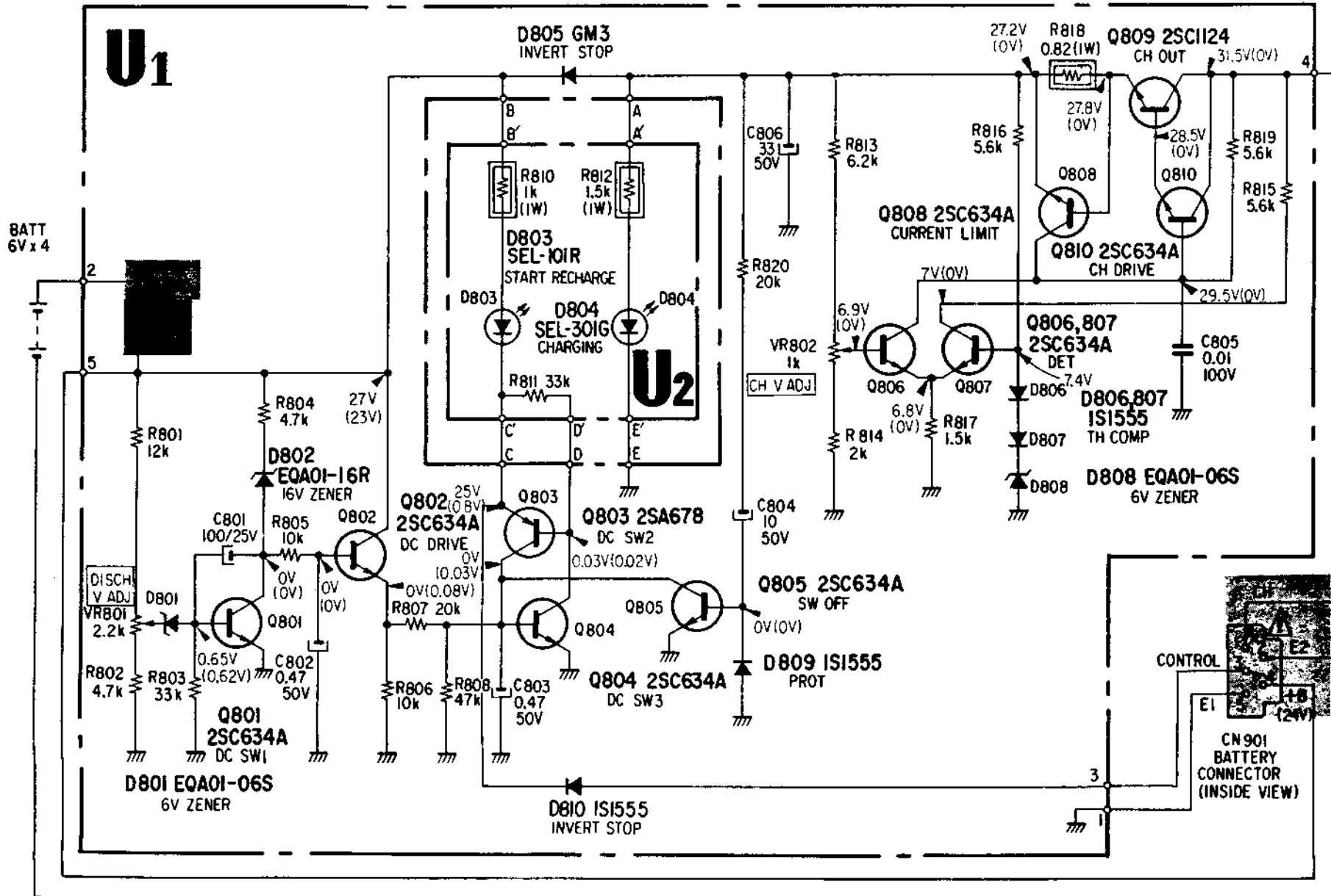
BATTERY PACK FOR KV-9000

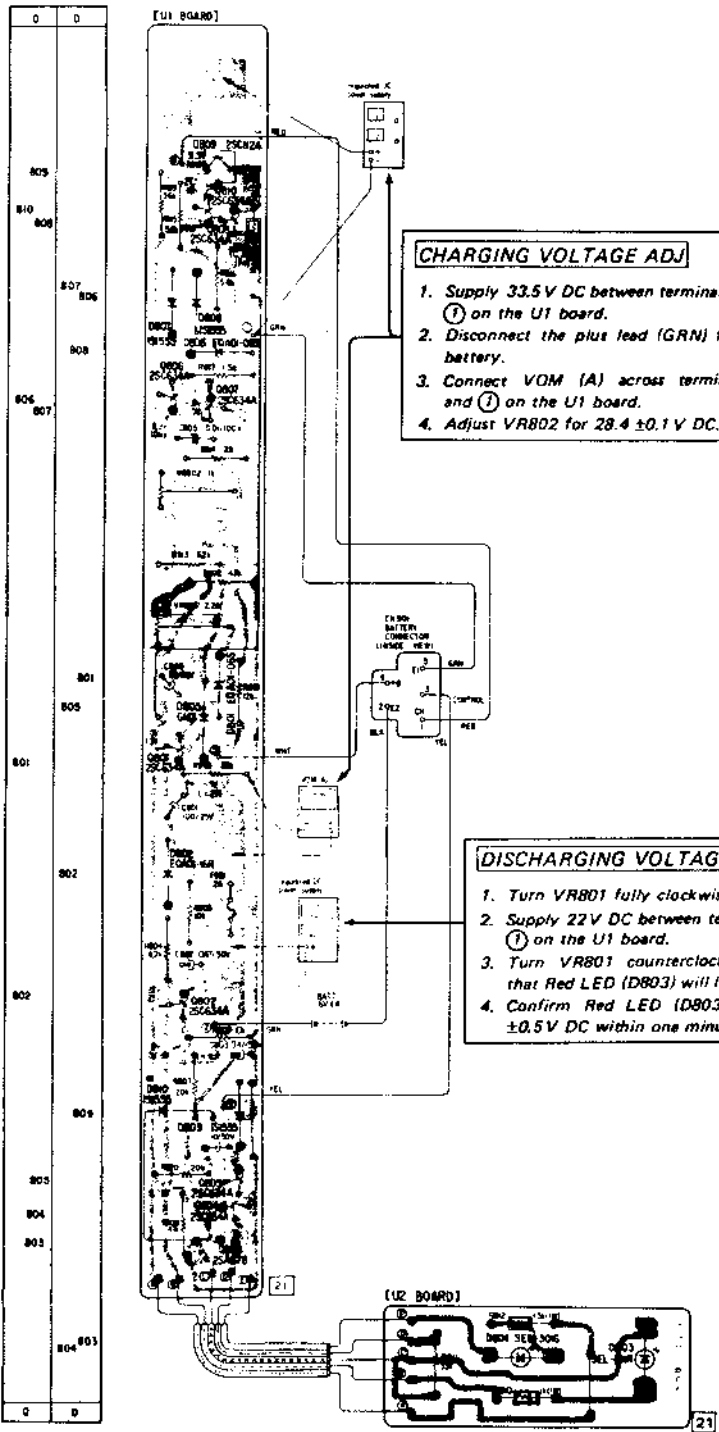
SPECIFICATIONS

- Semiconductors: 10 transistors, 10 diodes (incl. 2 light-emitting diodes)
- Output Voltage: 24V DC
- Recharging Time: Approx. 10 hours
- Operating Time: 3 hours
- Capacity: 5.7 A/h (nominal)
- Batteries: 3FX3S 6V 5.7 A-HR 4 pieces
- Dimensions: Approx. 290 (w) x 47.5 (h) x 335 (d) mm
11 3/4 (w) x 1 7/8 (h) x 13 1/2 (d) inches
- Weight: Approx. 5.5 kg (12 lb 2 oz)
- Accessory Supplied: Instruction Manual

SCHEMATIC DIAGRAM

- Note:**
- Voltages of $_V$ are with the power switch (S901) in the KV-9000E pulled on and with the charge switch (S902) set at CHARGE position.
 - Voltages of $(_V)$ are with the charge switch (S902) set at OPERATE position.



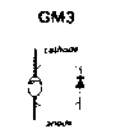
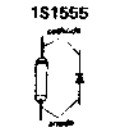
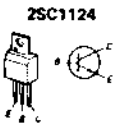
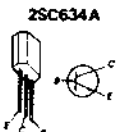
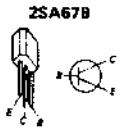


CHARGING VOLTAGE ADJ

1. Supply 33.5V DC between terminals ④ and ① on the U1 board.
2. Disconnect the plus lead (GRN) from the battery.
3. Connect VOM (A) across terminals ⑤ and ⑦ on the U1 board.
4. Adjust VR802 for 28.4 ±0.1 V DC.

DISCHARGING VOLTAGE ADJ

1. Turn VR801 fully clockwise.
2. Supply 22V DC between terminals ② and ① on the U1 board.
3. Turn VR801 counterclockwise slowly so that Red LED (D803) will light.
4. Confirm Red LED (D803) lights for 22 ±0.5V DC within one minute.



4. ELECTRICAL PARTS LIST

Ref. No.	Part No.	Description
CIRCUIT BOARDS		
	1-585-997-00	③ U1 Board
	1-585-998-00	③ U2 Board
SEMICONDUCTORS		
Transistors		
Q801,802	③	2SC634A
Q803	③	2SA67B
Q804-808	③	2SC634A
Q809	③	2SC1124
Q810	③	2SC634A
Diodes		
D801	③	EQA01-06S
D802	③	EQA01-16R
D803	③	SEL101R
D804	③	SEL301G
D805	③	GM3
D806,807	③	1S1555
D808	③	EQA01-06S
D809,810	③	1S1555

Ref. No.	Part No.	Description
CAPACITORS		
C801	1-121-416-11	③ 100µF 25V electrolytic
C802,803	1-121-726-11	③ 0.47µF 50V electrolytic
C804	1-121-738-11	③ 10µF 50V electrolytic
C805	1-108-626-12	③ 0.01µF 100V mylar
C806	1-121-405-11	③ 33µF 50V electrolytic
RESISTORS		
Common 1/4W carbon resistors are omitted. Check schematic diagram for their values.		
R810	1-213-143-11	③ 1 kΩ 1W metal oxide (nonflammable)
R812	1-213-145-11	③ 1.5 kΩ 1W metal oxide (nonflammable)
R818	1-212-360-11	③ 1 Ω 1W metal oxide (nonflammable)
VR801	1-224-643-XX	③ 2.2 kΩ-B, adjustable; DISCH V ADJ
VR802	1-224-642-XX	③ 1 kΩ-B, adjustable; CH V ADJ

MISCELLANEOUS

③ 1-551-293-12 ③ Cont. DC power with 1-p connector

PACKING MATERIALS AND ACCESSORIES

Part No.	Description
2-241-016-00	③ Bag, protection
2-241-018-00	③ Cushion
2-241-022-00	③ Carton
4-495-657-11	③ Manual, instruction