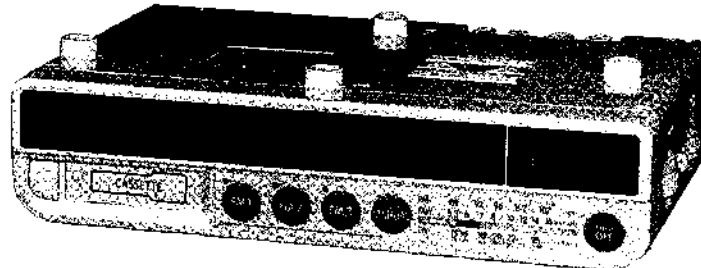


# ICF-C560L

## SERVICE MANUAL

*AEP Model*



### SPECIFICATIONS

- Frequency coverage  
FM: 87.6 - 107.5 MHz  
MW: 531 - 1,602 kHz  
LW: 153 - 255 kHz
- Antennas FM: AC power cord antenna  
MW/LW: Built-in ferrite bar antenna
- Speaker Approx. 7.7 cm (3 inches) dia.
- Power output  
Radio section: 450 mW  
Player section: 250 mW
- Power requirements  
220 V AC, 50 Hz  
9 V DC, one 6F22 battery for power back-up
- Battery life  
Approx. 80 hours, using the Sony battery S-006P (U)
- Power consumption  
8 W
- Dimensions  
Approx. 287 x 75 x 209 mm  
(11<sup>3</sup>/<sub>8</sub> x 3 x 8<sup>1</sup>/<sub>4</sub> inches)  
(w/h/d)  
incl. projecting parts and controls
- Weight Approx. 1.5 kg (3 lb 5 oz)
- Accessories supplied  
Spacer (4)  
Mounting screw (4)  
Template (1)  
Cord clamp (1)

Design and specifications subject to change without notice.

Model Name Using Similar Mechanism	NEW
Tape Transport Mechanism Type	MF-C560, M

### Features

- This space saving radio can be easily installed under the kitchen cupboard, etc.
- You can preset 3 FM stations with easy tuning and usage.
- The countdown timer lets you know when the preset time has come.
- You can play back the cassette tapes in monaural sound.

### SAFETY-RELATED COMPONENT WARNING!!

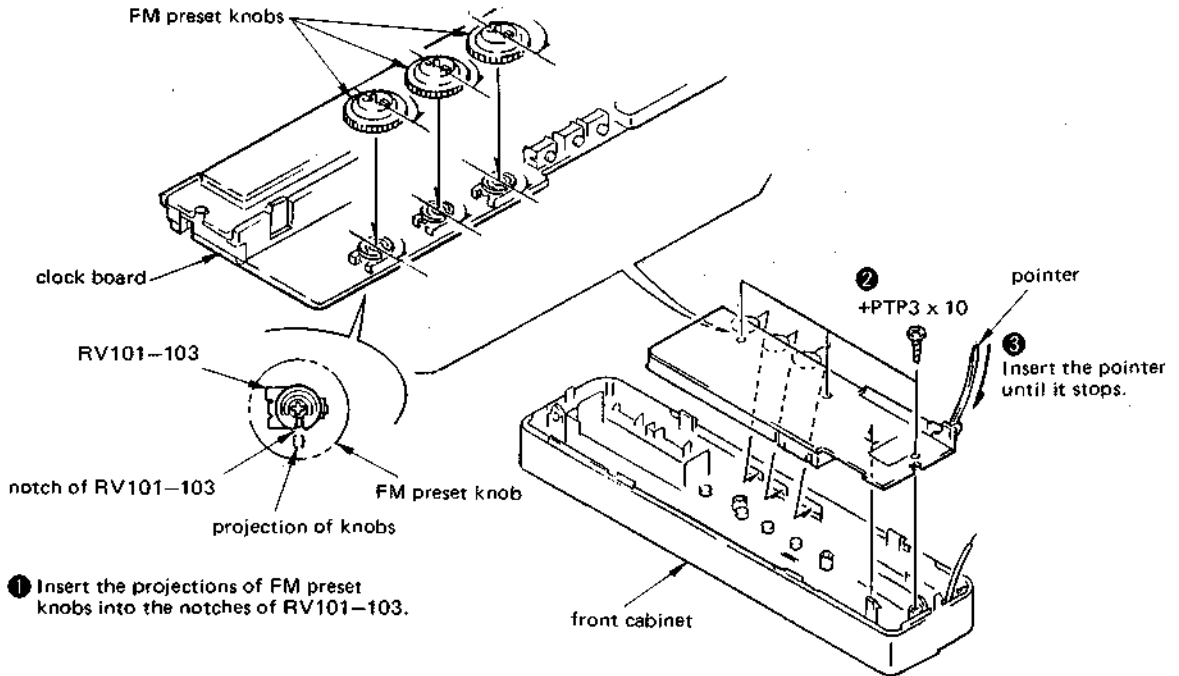
COMPONENTS IDENTIFIED BY MARK  $\Delta$  OR DOTTED LINE WITH MARK  $\Delta$  ON THE SCHEMATIC DIAGRAMS AND IN THE PARTS LIST ARE CRITICAL TO SAFE OPERATION. REPLACE THESE COMPONENTS WITH SONY PARTS WHOSE PART NUMBERS APPEAR AS SHOWN IN THIS MANUAL OR IN SUPPLEMENTS PUBLISHED BY SONY.

**FM/MW/LW 3 BAND KITCHEN RADIO**  
**SONY®**

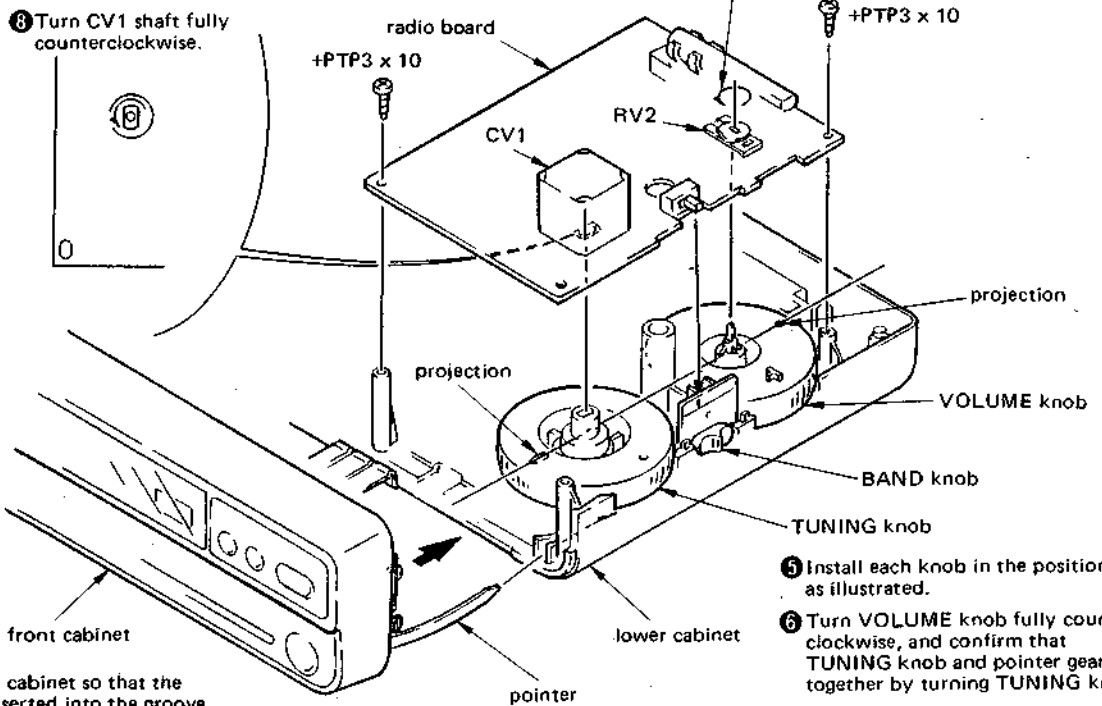


## SECTION 1 DIAL POINTER SETTING

**Note:** Follow the installing procedure in the numerical order given.



4 Install radio board so that the hole of RV2 is put into VOLUME knob, and the shaft of CV1 into TUNING knob.



4 Install front cabinet so that the pointer is inserted into the groove of lower cabinet.

## SECTION 2 ADJUSTMENTS

### 2-1. MECHANICAL ADJUSTMENT PRECAUTION

- Clean the following parts with a denatured-alcohol-moistened swab:
 

record/playback head	pinch roller
erase head	rubber belts
capstan	idlers
- Demagnetize the record/playback head with a head demagnetizer. (Do not bring the head demagnetizer close to the erase head.)
- Do not use a magnetized screwdriver for the adjustments.
- After the adjustments, apply suitable locking compound to the parts adjusted.

#### Torque Measurement

Torque	Meter Reading	Torque Meter
Forward	35-75g-cm (0.49-1.04oz-inch)	CQ-102C
Fast Forward	35-75g-cm (0.49-1.04oz-inch)	CQ-201B

#### Tape Tension Measurement

Meter	Meter Reading
CQ-403A	more than 80g (2.82oz)

### 2-2. ELECTRICAL ADJUSTMENTS

#### 2-2-1. TAPE RECORDER SECTION

##### • Test Tape

Type	Signal	Used for
P-4-A063	6.3 kHz, -10 dB	head azimuth adjustment
WS-48A	3 kHz, 0 dB	tape speed adjustment

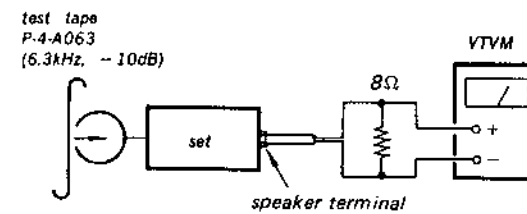
#### Playback Head Azimuth Adjustment

##### Setting:

VOLUME control: mechanical center

##### Procedure:

- Mode: playback



- Turn the adjustment screw for the maximum output levels.

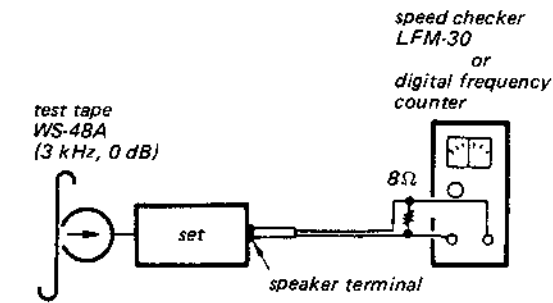
#### TAPE SPEED ADJUSTMENT

##### Setting:

VOLUME control: mechanical center

##### Procedure:

Mode: playback

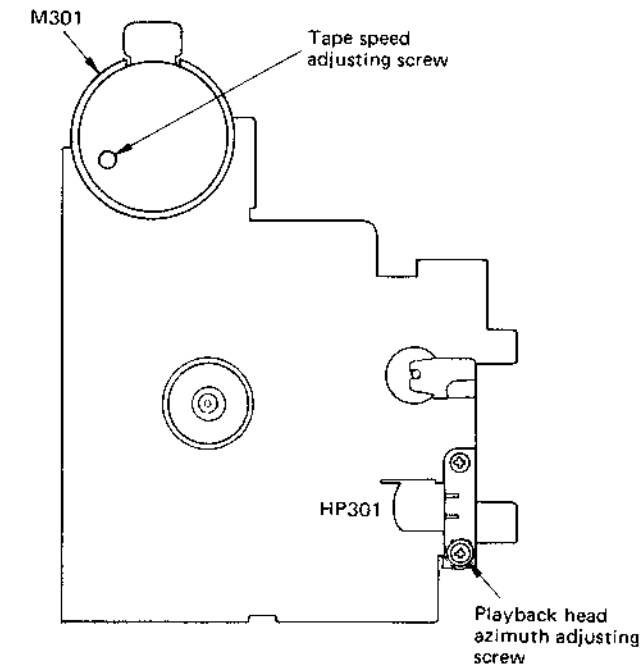


##### Adjustment Value:

Speed checker	Digital frequency counter
±3%	2,910 to 3,090 Hz

Frequency difference between the beginning and the end of the tape should be within 1% (30 Hz).

##### Adjustment Location:

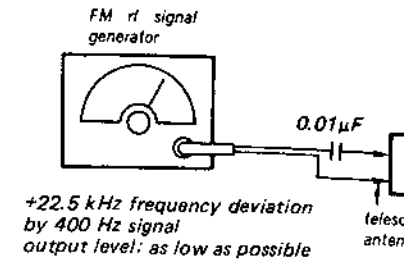


### 2-2-2. RADIO SECTION

#### • FM Section

##### Setting:

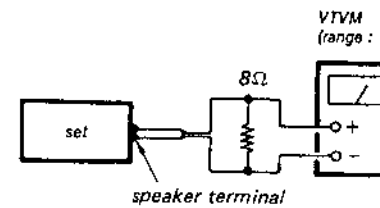
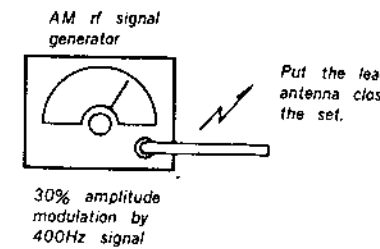
BAND switch: FM



#### • AM Section

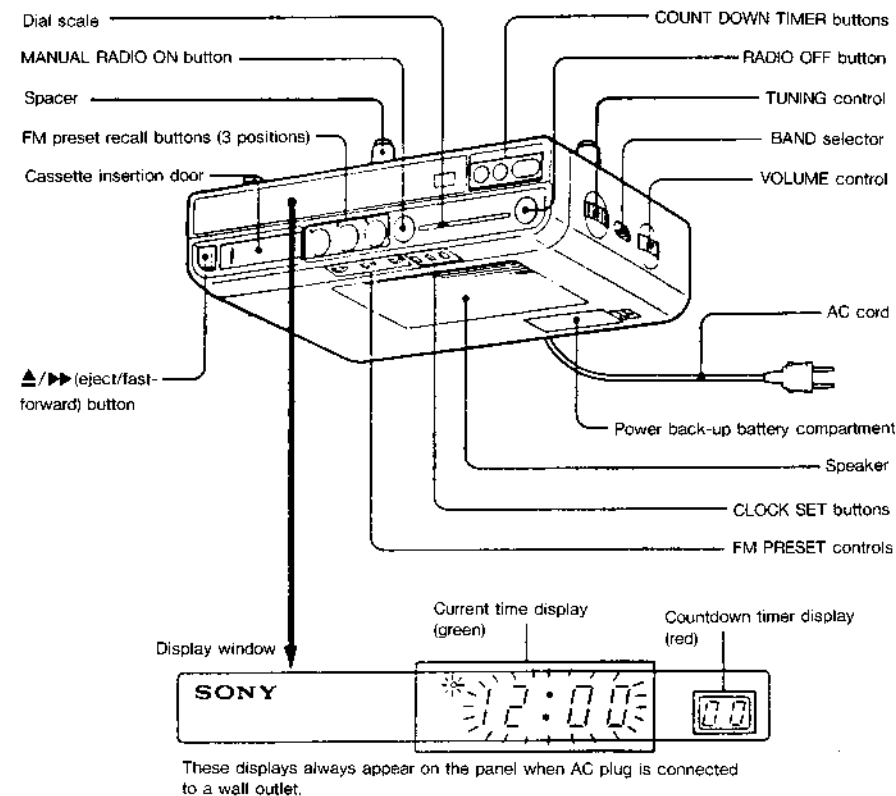
##### Setting:

BAND switch: MW or LW



- Repeat the procedures in each adjustment so the frequency coverage and tracking adjustment is finally done by the trimmer capacitors.

## Location and Function of Controls

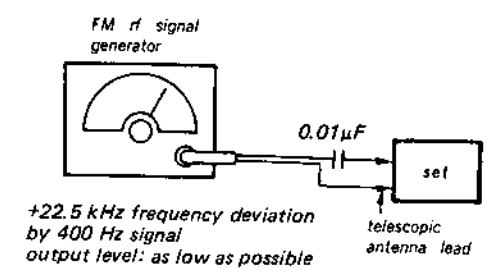


These displays always appear on the panel when AC plug is connected to a wall outlet.

2-2-2. RADIO SECTION

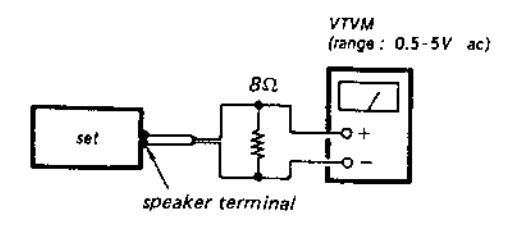
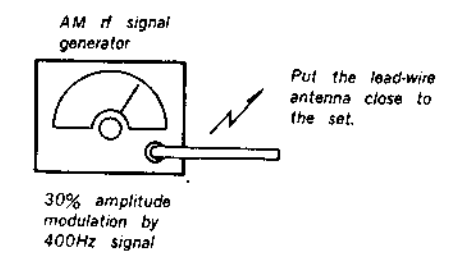
• FM Section

Setting:  
BAND switch: FM



• AM Section

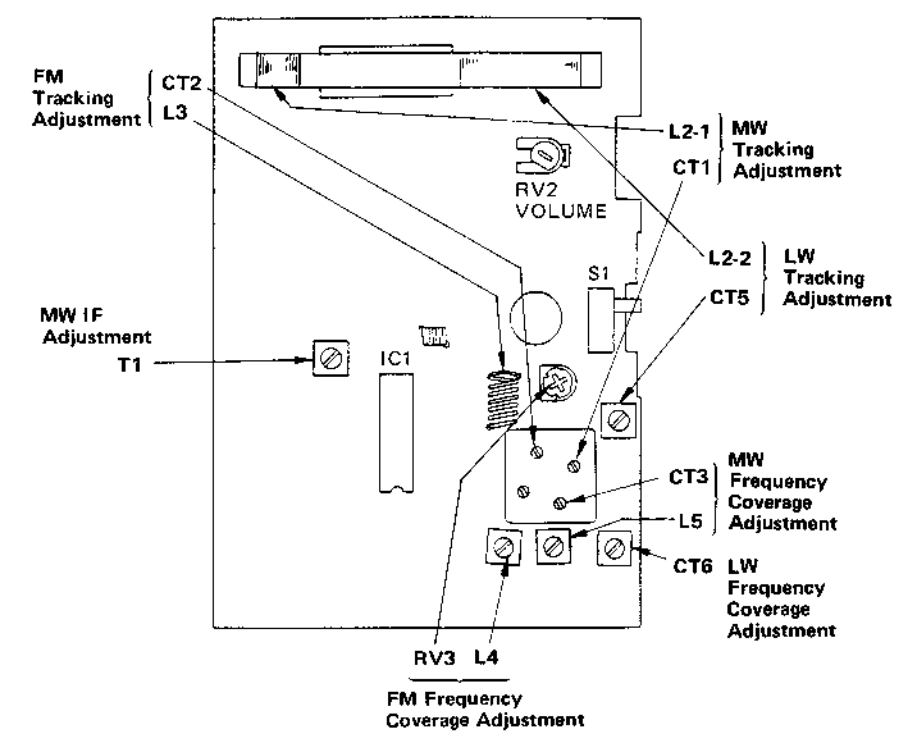
Setting:  
BAND switch: MW or LW



• Repeat the procedures in each adjustment several times, and the frequency coverage and tracking adjustments should be finally done by the trimmer capacitors.

AM IF ADJUSTMENT	
Adjust for a maximum reading on VTVM.	
T1	
455 kHz	
MW FREQUENCY COVERAGE ADJUSTMENT	
Adjust for a maximum reading on VTVM.	
L5	CT3
520 kHz	1,650 kHz
MW TRACKING ADJUSTMENT	
Adjust for a maximum reading on VTVM.	
L2-1	CT1
600 kHz	1,400 kHz
LW FREQUENCY COVERAGE ADJUSTMENT	
Adjust for a maximum reading on VTVM.	
CT6	
145 kHz	
LW TRACKING ADJUSTMENT	
Adjust for a maximum reading on VTVM.	
L2-2	CT5
160 kHz	240 kHz
FM FREQUENCY COVERAGE ADJUSTMENT	
Adjust for a maximum reading on VTVM.	
RV3	L4
87.35 MHz	107.9 MHz
FM TRACKING ADJUSTMENT	
Adjust for a maximum reading on VTVM.	
L3	CT2
87.35 MHz	107.9 MHz

Adjustment Location: radio board

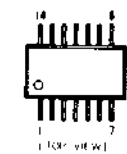


SECTION 3  
DIAGRAMS

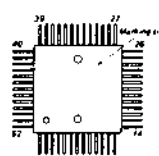
3-1. SCHEMATIC DIAGRAM

● Semiconductor Lead Layouts

SN74HC02NS



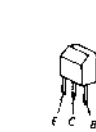
μPD65012



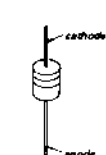
2SA1175HFE  
2SC2785HFE



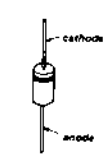
2SD773



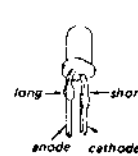
RD5.6ES-B2  
RD6.2ES-B1  
1SS119



10E2



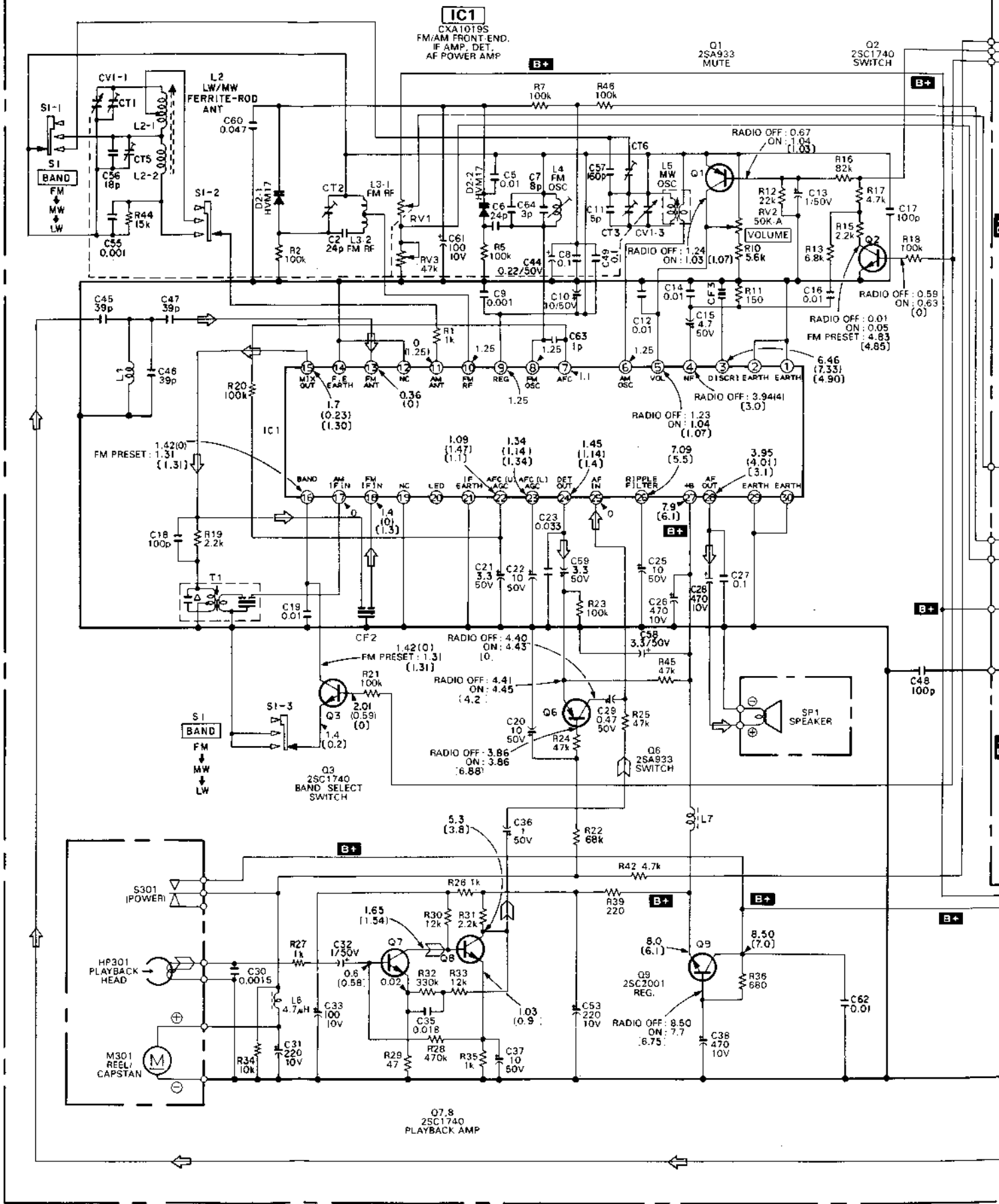
TLR124



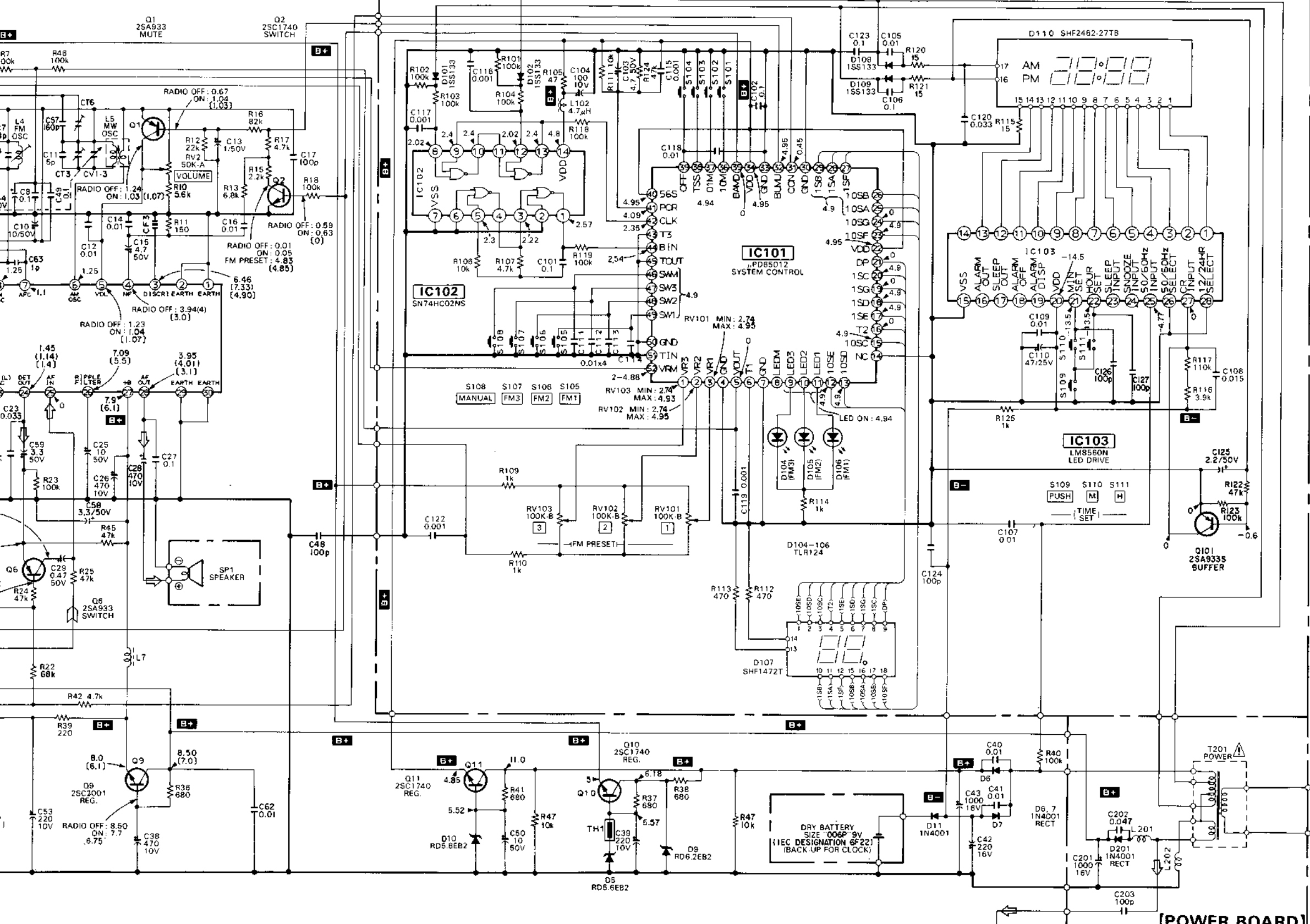
Note:

- All capacitors are in  $\mu\text{F}$  unless otherwise noted.  $\mu\text{F}$ :  $\mu\text{F}$   
50 WV or less are not indicated except for electrolytics and tantalums.
- All resistors are in  $\Omega$  and  $\frac{1}{4} \text{W}$  or less unless otherwise specified.
- : adjustment for repair.
- Voltage and waveforms are dc with respect to ground under no-signal (detuned) conditions.  
no mark: FM  
( ): MW/LW  
[ ]: PB
- Voltages are taken with a VOM (Input Impedance 10 M $\Omega$ ).  
Voltage variations may be noted due to normal production tolerances.
- Signal path.  
◁ : FM ▷ : PB

[RADIO BOARD]

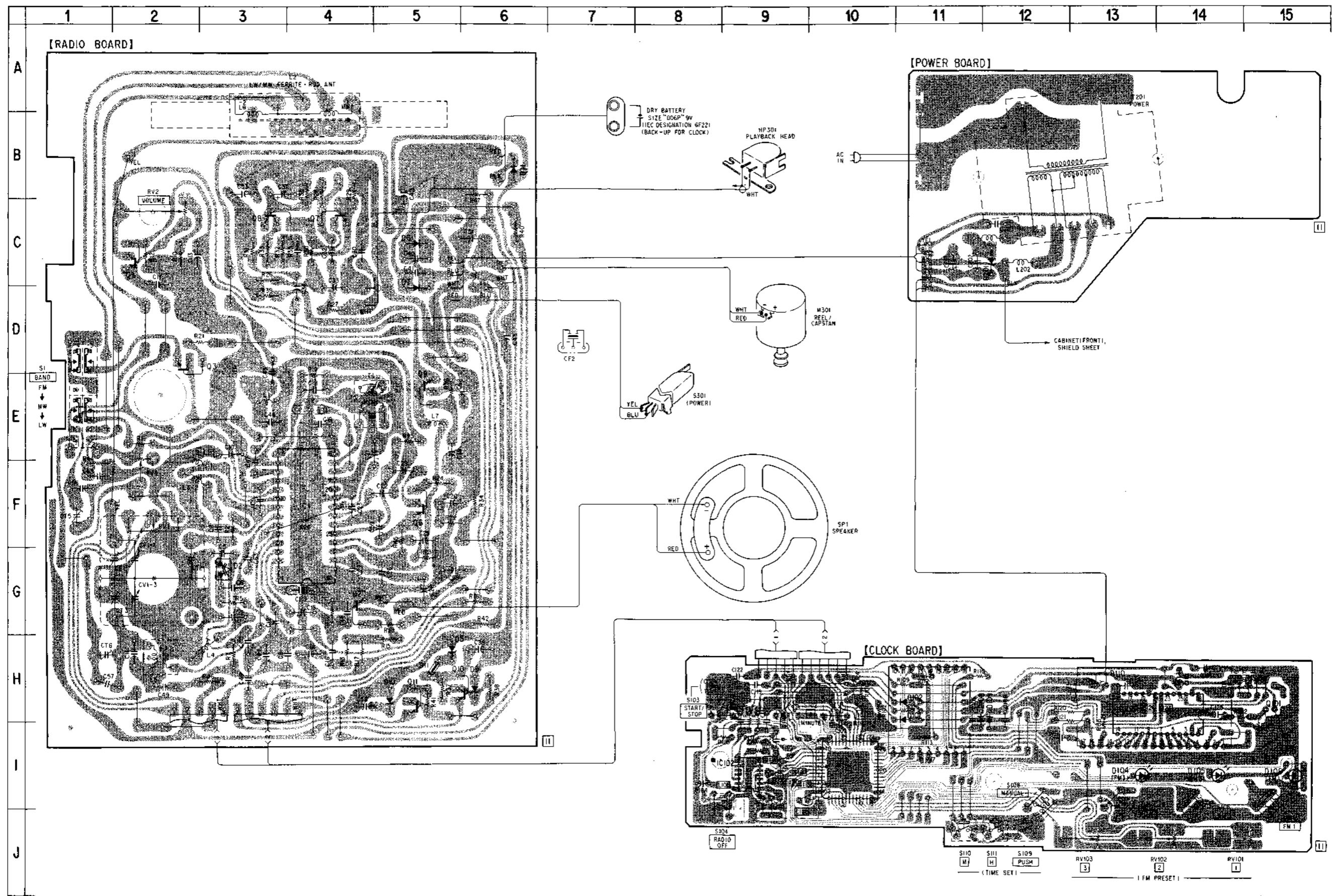


[CLOCK BOARD]



A  
B  
C  
D  
E  
F  
G  
H  
I  
J

[POWER BOARD]



• Semiconductor Location

Ref. No.	Location
D2	G-3
D5	H-5
D6	C-5
D7	D-5
D9	H-6
D10	H-5
D11	B-6
D101	H-11
D102	H-11
D104	I-13
D105	I-14
D106	I-15
D107	H-11
D108	H-11
D109	H-12
D110	H-13
D201	C-12
IC1	F-4
IC101	I-10
IC102	I-9
IC103	H-13
Q1	C-2
Q2	G-4
Q3	D-2
Q6	F-5
Q7	C-4
Q8	C-3
Q9	E-5
Q10	H-5
Q11	H-5
Q101	H-15

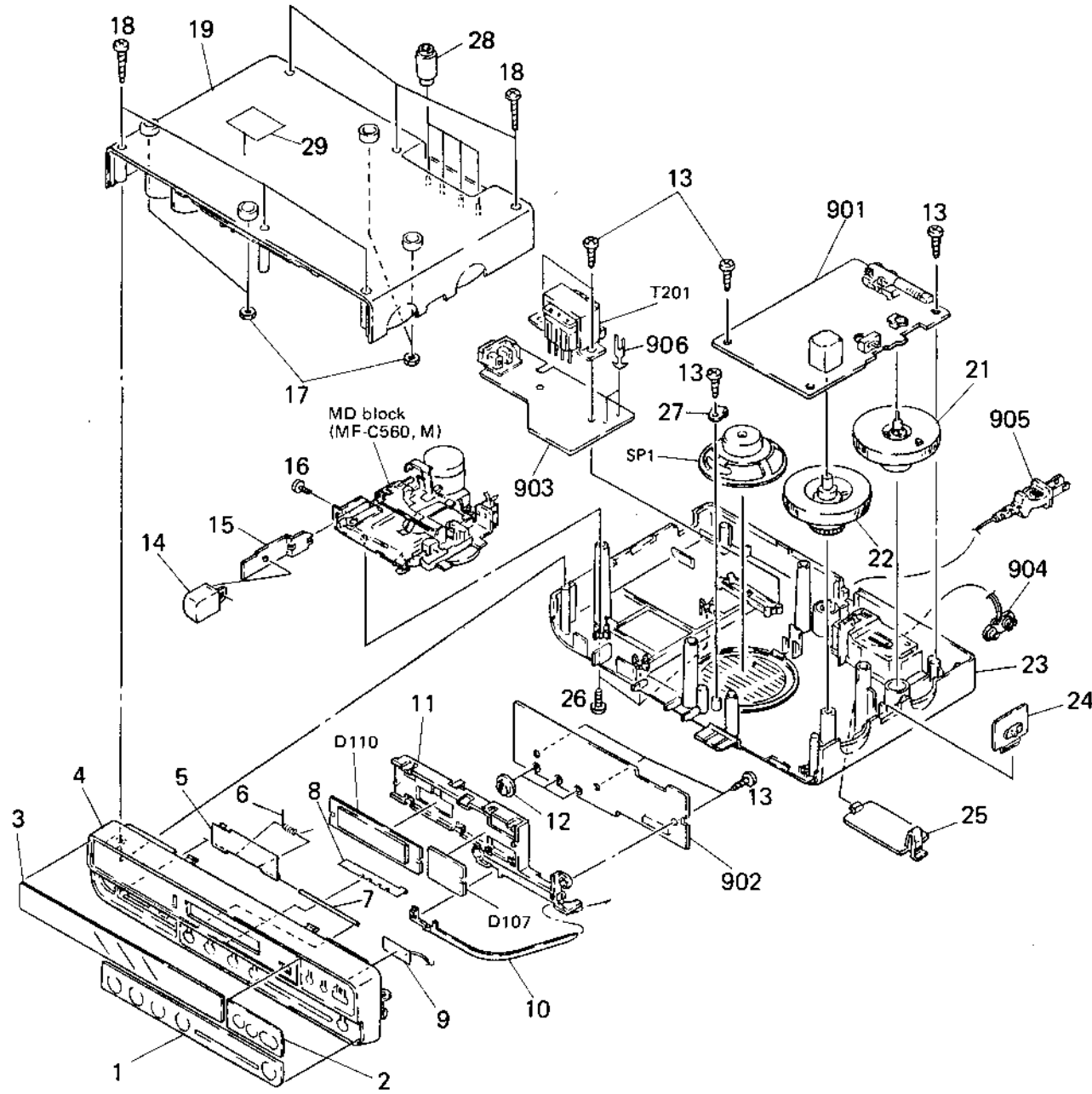
**Note on Printed Wiring Board:**  
 • ○ — : parts extracted from the component side.  
 • ■ — : parts mounted on the conductor side.

## SECTION 4 EXPLODED VIEWS

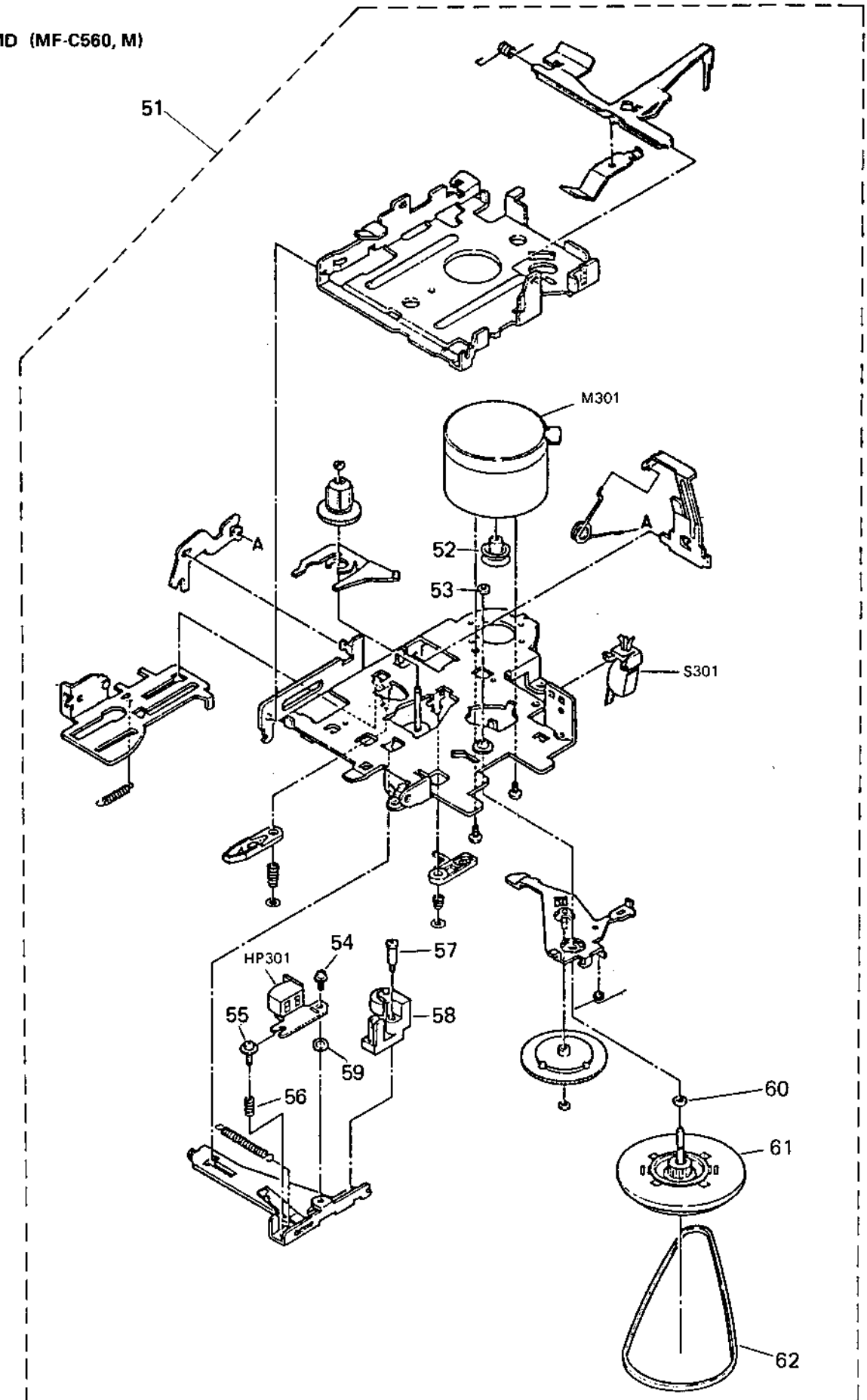
**NOTE:**

- The mechanical parts with no reference number in the exploded views are not supplied.

**(1) CABINET**



**(2) MD (MF-C560, M)**





## SECTION 5 MECHANICAL PARTS LIST

**NOTE:**

- The construction parts of an assembled part are indicated with a collation number in the remark column.
- Items marked "\*" are not stocked since they are seldom required for routine service. Some delay should be anticipated when ordering these items.
- Due to standardization, parts with part number suffix -XX and -X may be different from the parts specified in the components used on the set.

The components identified by mark or dotted line with mark are critical for safety. Replace only with part number specified.

<u>No.</u>	<u>Part No.</u>	<u>Description</u>	<u>Remarks</u>	<u>No.</u>	<u>Part No.</u>	<u>Description</u>	<u>Remarks</u>
1	3-901-776-41	SHEET (B), ORNAMENTAL		21	3-901-774-11	KNOB (VOLUME)	
2	3-901-775-01	SHEET (A), ORNAMENTAL		22	3-901-773-11	KNOB (TUNING)	
3	3-901-778-01	PLATE, ORNAMENTAL		23	3-901-784-11	CABINET (LOWER)	
4	3-901-786-11	CABINET (FRONT)		24	3-901-771-11	KNOB (BAND)	
5	3-901-763-11	LID, CASSETTE					
6	3-901-762-01	SPRING, TORSION		25	3-901-769-11	LID, BATTERY CASE	
7	3-901-781-01	SHAFT		26	7-682-148-15	SCREW +P 3X8	
8	*3-902-067-02	FOIL (D), SHIELD		27	3-593-019-00	CLAW, SPEAKER	
9	*3-902-066-01	FOIL (C), SHIELD		28	3-901-770-11	SPACER, FITTING	
10	3-901-767-01	POINTER		29	*3-901-756-01	LABEL, MODEL NUMBER	
11	*3-901-785-01	CHASSIS		901	*A-3806-036-A	MOUNTED PCB, RADIO	
12	3-901-772-11	KNOB (FM PRESET)		902	*1-630-161-11	PC BOARD, CLOCK	
13	7-685-647-79	SCREW +P 3X10 TYPE2 NON-SLIT		903	*1-630-162-11	PC BOARD, POWER	
14	3-901-768-11	BUTTON (EJECT)		904	1-535-253-00	SNAP, BATTERY	
15	*3-901-766-01	LEVER		905	1-555-795-00	CORD, POWER	
16	3-902-077-01	SCREW (+B) (2X3), STEP		906	1-535-476-11	TERMINAL	
17	7-684-025-04	N 5, TYPE 2		D107	8-719-975-66	DIODE SHF-1472T	
18	7-685-149-11	SCREW +P 3X14 TYPE2 NON-SLIT		D110	8-719-974-85	DIODE SHF-2462-27TB	
19	3-901-787-11	CABINET (UPPER)		SP1	1-503-680-11	SPEAKER	
				T201	1-449-601-11	TRANSFORMER, POWER	

<u>No.</u>	<u>Part No.</u>	<u>Description</u>	<u>Remarks</u>
51	A-3013-388-A	DECK ASSY, MECHANICAL (MF-C560,M)	
52	3-986-410-01	MOTOR PULLEY	
53	3-986-409-01	HL WASHER CUT 1.5X3.2X0.5	
54	3-986-402-01	TAMS SCREW M2X4	
55	3-986-403-01	AZIMUTH SCREW M2X8	
56	3-986-401-01	AZIMUTH SPRING	
57	3-986-404-01	PARM COLLAR SCREW	
58	3-986-405-01	PINCH ROLLER ASSY	
59	3-986-406-01	WASHER 2X5X0.3	
60	3-986-408-01	HL WASHER 2.1X3.8X0.2	
61	3-986-407-01	FLYWHEEL ASSY	
62	3-986-411-01	MAIN BELT	
HP301	1-543-625-21	HEAD, MAGNETIC	
M301	1-541-661-11	MOTOR, DC	
S301	1-571-922-11	SWITCH, LEAF	

## SECTION 6 ELECTRICAL PARTS LIST

**NOTE:**

- Due to standardization, replacements in the parts list may be different from the parts specified in the diagrams or the components used on the set.
- Items marked "\*" are not stocked since they are seldom required for routine service. Some delay should be anticipated when ordering these items.
- If there are two or more same circuits in a set such as a stereophonic machine, only typical circuit parts may be indicated and capacitors and resistors in other same circuits may be omitted.

**CAPACITORS:**

MF:  $\mu$ F, PF:  $\mu$ PF.

**RESISTORS**

- All resistors are in ohms.
- F: nonflammable

**COILS**

- MMH: mH, UH:  $\mu$ H

**SEMICONDUCTORS**

In each case, U:  $\mu$ , for example:

UA....:  $\mu$ A...., UPA....:  $\mu$ PA....,

UPC....:  $\mu$ PC, UPD....:  $\mu$ PD....

The components identified by mark  $\Delta$  or dotted line with mark  $\Delta$  are critical for safety. Replace only with part number specified.

Ref.No.	Part No.	Description	Ref.No.	Part No.	Description						
901	*A-3806-036-A	MOUNTED PCB, RADIO	C44	1-124-464-11	ELECT	0.22MF	20%	50V			
902	*1-630-161-11	PC BOARD, CLOCK	C45	1-162-213-31	CERAMIC	39PF	5%	50V			
903	*1-630-162-11	PC BOARD, POWER	C46	1-162-213-31	CERAMIC	39PF	5%	50V			
904	1-535-253-00	SNAP, BATTERY	C47	1-162-213-31	CERAMIC	39PF	5%	50V			
905	$\Delta$ 1-555-795-00	CORD, POWER	C48	1-162-282-31	CERAMIC	100PF	10%	50V			
906	1-535-476-11	TERMINAL	C49	1-162-851-11	CERAMIC	0.1MF	20%	16V			
C2	1-102-960-00	CERAMIC	24PF	5%	50V	C50	1-123-875-11	ELECT	10MF	20%	50V
C5	1-161-379-00	CERAMIC	0.01MF	30%	16V	C53	1-126-176-11	ELECT	220MF	20%	10V
C6	1-102-960-00	CERAMIC	24PF	5%	50V	C55	1-162-294-31	CERAMIC	0.001MF	10%	50V
C7	1-102-945-00	CERAMIC	8PF	10%	50V	C56	1-162-205-31	CERAMIC	18PF	5%	50V
C8	1-162-851-11	CERAMIC	0.1MF	20%	16V	C57	1-103-706-00	POLYSTYRENE	160PF	5%	50V
C9	1-162-294-31	CERAMIC	0.001MF	10%	50V	C58	1-123-382-00	ELECT	3.3MF	20%	50V
C10	1-123-875-11	ELECT	10MF	20%	50V	C59	1-123-382-00	ELECT	3.3MF	20%	50V
C11	1-102-942-00	CERAMIC	5PF	0.5PF	50V	C60	1-161-021-11	CERAMIC	0.047MF	10%	25V
C12	1-161-379-00	CERAMIC	0.01MF	30%	16V	C61	1-124-443-00	ELECT	100MF	20%	10V
C13	1-124-499-11	ELECT	1MF	20%	50V	C62	1-161-379-00	CERAMIC	0.01MF	30%	16V
C14	1-161-379-00	CERAMIC	0.01MF	30%	16V	C63	1-102-934-00	CERAMIC	1PF	0.25PF	50V
C15	1-124-927-11	ELECT	4.7MF	20%	50V	C101	1-162-851-11	CERAMIC	0.1MF	20%	16V
C16	1-161-379-00	CERAMIC	0.01MF	30%	16V	C102	1-162-851-11	CERAMIC	0.1MF	20%	16V
C17	1-162-282-31	CERAMIC	100PF	10%	50V	C103	1-124-927-11	ELECT	4.7MF	20%	50V
C18	1-162-282-31	CERAMIC	100PF	10%	50V	C104	1-124-443-00	ELECT	100MF	20%	10V
C19	1-161-379-00	CERAMIC	0.01MF	30%	16V	C105	1-161-379-00	CERAMIC	0.01MF	30%	16V
C20	1-123-875-11	ELECT	10MF	20%	50V	C106	1-162-851-11	CERAMIC	0.1MF	20%	16V
C21	1-123-382-00	ELECT	3.3MF	20%	50V	C107	1-161-379-00	CERAMIC	0.01MF	30%	16V
C22	1-123-875-11	ELECT	10MF	20%	50V	C108	1-130-485-00	MYLAR	0.015MF	5%	50V
C23	1-161-057-00	CERAMIC	0.033MF	10%	25V	C109	1-161-379-00	CERAMIC	0.01MF	30%	16V
C25	1-123-875-11	ELECT	10MF	20%	50V	C110	1-124-477-11	ELECT	47MF	20%	25V
C26	1-124-472-11	ELECT	470MF	20%	10V	C111	1-164-232-11	CERAMIC CHIP	0.01MF		50V
C27	1-162-851-11	CERAMIC	0.1MF	20%	16V	C112	1-164-232-11	CERAMIC CHIP	0.01MF		50V
C28	1-124-472-11	ELECT	470MF	20%	10V	C113	1-164-232-11	CERAMIC CHIP	0.01MF		50V
C29	1-124-902-00	ELECT	0.47MF	20%	50V	C114	1-164-232-11	CERAMIC CHIP	0.01MF		50V
C30	1-161-374-11	CERAMIC	0.0015MF	20%	16V	C115	1-162-294-31	CERAMIC	0.001MF	10%	50V
C31	1-126-176-11	ELECT	220MF	20%	10V	C116	1-162-294-31	CERAMIC	0.001MF	10%	50V
C32	1-124-499-11	ELECT	1MF	20%	50V	C117	1-162-294-31	CERAMIC	0.001MF	10%	50V
C33	1-124-443-00	ELECT	100MF	20%	10V	C118	1-164-232-11	CERAMIC CHIP	0.01MF		50V
C35	1-161-054-00	CERAMIC	0.018MF	10%	25V	C119	1-162-294-31	CERAMIC	0.001MF	10%	50V
C36	1-124-499-11	ELECT	1MF	20%	50V	C120	1-161-057-00	CERAMIC	0.033MF	10%	25V
C37	1-123-875-11	ELECT	10MF	20%	50V	C122	1-162-294-31	CERAMIC	0.001MF	10%	50V
C38	1-124-472-11	ELECT	470MF	20%	10V	C123	1-162-851-11	CERAMIC	0.1MF	20%	16V
C39	1-126-176-11	ELECT	220MF	20%	10V	C124	1-162-282-31	CERAMIC	100PF	10%	50V
C40	1-101-004-00	CERAMIC	0.01MF		50V	C125	1-124-257-00	ELECT	2.2MF	20%	50V
C41	1-101-004-00	CERAMIC	0.01MF		50V	C126	1-163-117-00	CERAMIC CHIP	100PF	5%	50V
C42	1-124-120-11	ELECT	220MF	20%	16V	C127	1-163-117-00	CERAMIC CHIP	100PF	5%	50V
C43	1-124-360-00	ELECT	1000MF	20%	16V	C201	1-124-360-00	ELECT	1000MF	20%	16V
						C202	1-161-021-11	CERAMIC	0.047MF	20%	25V
						C203	1-162-282-31	CERAMIC	100PF	10%	50V

Ref.No.	Part No.	Description
CF2 } CF3 }	1-567-538-71	FILTER, CERAMIC
CT5	1-141-245-00	CAP, VAR, TRIMMER
CT6	1-141-245-00	CAP, VAR, TRIMMER
CT1-3 } CV1 } RV1 }	1-151-645-11	CAP, VAR, POLYETHYLENE (VR)
D2	8-719-974-97	DIODE HVM17-A
D5	8-719-109-89	DIODE RD5.6ES-B2
D6	8-719-200-02	DIODE 10E-2
D7	8-719-200-02	DIODE 10E-2
D9	8-719-109-92	DIODE RD6.2ES-B1
D10	8-719-109-89	DIODE RD5.6ES-B2
D11	8-719-200-02	DIODE 10E-2
D101	8-719-911-19	DIODE 1SS119
D102	8-719-911-19	DIODE 1SS119
D104	8-719-812-41	DIODE TLR124 (LED)
D105	8-719-812-41	DIODE TLR124 (LED)
D106	8-719-812-41	DIODE TLR124 (LED)
D107	8-719-975-66	DIODE SHF-1472T
D108	8-719-911-19	DIODE 1SS119
D109	8-719-911-19	DIODE 1SS119
D110	8-719-974-85	DIODE SHF-2462-27TB
D201	8-719-200-02	DIODE 10E-2
HP301	1-543-625-21	HEAD, MAGNETIC (PLAYBACK)
IC1	8-752-035-29	IC CXA1019S
IC101	8-759-144-39	IC UPD65012GC-U00-3B6
IC102	8-759-925-72	IC SN74HC02NS
IC103	8-759-821-46	IC LM8560N
L1	1-401-228-00	ANTENNA COIL
L2	1-402-276-11	ANTENNA, FERRITE-ROD (MM/LW)
L3-1	*1-420-966-00	COIL, AIR-CORE
L3-2	*1-420-966-00	COIL, AIR-CORE
L4	1-460-025-11	COIL (WITH CORE)
L5	1-406-028-00	COIL, OSC (MW)
L6	1-410-324-11	INDUCTOR 4.7UH
L7	1-410-294-11	INDUCTOR, MICRO
L102	1-410-200-31	INDUCTOR CHIP 4.7UH
L201	*1-422-229-11	COIL, AIR-CORE
L202	*1-422-229-11	COIL, AIR-CORE
M301	1-541-661-11	MOTOR, DC

Ref.No.	Part No.	Description
Q1	8-729-119-76	TRANSISTOR 2SA1175-HFE
Q2	8-729-119-78	TRANSISTOR 2SC2785-HFE
Q3	8-729-119-78	TRANSISTOR 2SC2785-HFE
Q6	8-729-119-76	TRANSISTOR 2SA1175-HFE
Q7	8-729-119-78	TRANSISTOR 2SC2785-HFE
Q8	8-729-119-78	TRANSISTOR 2SC2785-HFE
Q9	8-729-177-32	TRANSISTOR 2SD773
Q10	8-729-119-78	TRANSISTOR 2SC2785-HFE
Q11	8-729-119-78	TRANSISTOR 2SC2785-HFE
Q101	8-729-119-76	TRANSISTOR 2SA1175-HFE
R1	1-249-417-11	CARBON 1K 5% 1/4W
R2	1-249-441-11	CARBON 100K 5% 1/4W
R5	1-249-441-11	CARBON 100K 5% 1/4W
R7	1-249-441-11	CARBON 100K 5% 1/4W
R10	1-249-426-11	CARBON 5.6K 5% 1/4W
R11	1-249-407-11	CARBON 150 5% 1/4W
R12	1-249-433-11	CARBON 22K 5% 1/4W
R13	1-249-427-11	CARBON 6.8K 5% 1/4W
R15	1-249-421-11	CARBON 2.2K 5% 1/4W
R16	1-249-440-11	CARBON 82K 5% 1/4W
R17	1-249-425-11	CARBON 4.7K 5% 1/4W
R18	1-249-441-11	CARBON 100K 5% 1/4W
R19	1-249-421-11	CARBON 2.2K 5% 1/4W
R20	1-249-441-11	CARBON 100K 5% 1/4W
R21	1-249-441-11	CARBON 100K 5% 1/4W
R22	1-249-439-11	CARBON 68K 5% 1/4W
R23	1-249-441-11	CARBON 100K 5% 1/4W
R24	1-249-437-11	CARBON 47K 5% 1/4W
R25	1-249-433-11	CARBON 22K 5% 1/4W
R26	1-249-417-11	CARBON 1K 5% 1/4W
R27	1-249-417-11	CARBON 1K 5% 1/4W
R28	1-247-895-00	CARBON 470K 5% 1/4W
R29	1-249-401-11	CARBON 47 5% 1/4W
R30	1-249-430-11	CARBON 12K 5% 1/4W
R31	1-249-421-11	CARBON 2.2K 5% 1/4W
R32	1-247-891-00	CARBON 330K 5% 1/4W
R33	1-249-430-11	CARBON 12K 5% 1/4W
R34	1-249-429-11	CARBON 10K 5% 1/4W
R35	1-249-417-11	CARBON 1K 5% 1/4W
R36	1-249-415-11	CARBON 680 5% 1/4W
R37	1-249-415-11	CARBON 680 5% 1/4W
R38	1-249-415-11	CARBON 680 5% 1/4W
R39	1-249-409-11	CARBON 220 5% 1/4W
R40	1-249-441-11	CARBON 100K 5% 1/4W
R41	1-249-415-11	CARBON 680 5% 1/4W
R42	1-249-425-11	CARBON 4.7K 5% 1/4W

Ref.No.	Part No.	Description			
R44	1-249-431-11	CARBON	15K	5%	1/4W
R45	1-249-437-11	CARBON	47K	5%	1/4W
R46	1-249-441-11	CARBON	100K	5%	1/4W
R47	1-249-429-11	CARBON	10K	5%	1/4W
R101	1-249-441-11	CARBON	100K	5%	1/4W
R102	1-249-441-11	CARBON	100K	5%	1/4W
R103	1-249-441-11	CARBON	100K	5%	1/4W
R104	1-249-441-11	CARBON	100K	5%	1/4W
R105	1-249-401-11	CARBON	47	5%	1/4W
R106	1-249-429-11	CARBON	10K	5%	1/4W
R107	1-249-425-11	CARBON	4.7K	5%	1/4W
R109	1-249-417-11	CARBON	1K	5%	1/4W
R110	1-249-417-11	CARBON	1K	5%	1/4W
R111	1-249-429-11	CARBON	10K	5%	1/4W
R112	1-249-413-11	CARBON	470	5%	1/4W
R113	1-249-413-11	CARBON	470	5%	1/4W
R114	1-249-417-11	CARBON	1K	5%	1/4W
R115	1-249-395-11	CARBON	15	5%	1/4W
R116	1-249-424-11	CARBON	3.9K	5%	1/4W
R117	1-247-880-11	CARBON	110K	5%	1/4W
R118	1-249-441-11	CARBON	100K	5%	1/4W
R119	1-249-441-11	CARBON	100K	5%	1/4W
R120	1-247-690-11	CARBON	15	5%	1/4W
R121	1-247-690-11	CARBON	15	5%	1/4W
R122	1-249-437-11	CARBON	47K	5%	1/4W
R123	1-249-441-11	CARBON	100K	5%	1/4W
R124	1-216-089-00	METAL GLAZE	47K	5%	1/10W
R125	1-249-417-11	CARBON	1K	5%	1/4W
RV2	1-228-790-00	RES, VAR, CARBON 50K (VOLUME)			
RV3	1-228-996-00	RES, ADJ, CARBON 47K			
RV101	1-238-517-11	RES, ADJ, CARBON 100K (FM PRESET FM1)			
RV102	1-238-517-11	RES, ADJ, CARBON 100K (FM PRESET FM2)			
RV103	1-238-517-11	RES, ADJ, CARBON 100K (FM PRESET FM3)			

Ref.No.	Part No.	Description
S1	1-554-509-21	SWITCH, SLIDE (BAND)
S101	1-553-856-00	SWITCH, KEY BOARD (COUNT DOWN TIMER:MINUTE 10)
S102	1-553-856-00	SWITCH, KEY BOARD (COUNT DOWN TIMER:MINUTE 1)
S103	1-553-856-00	SWITCH, KEY BOARD (COUNT DOWN TIMER:START/STOP)
S104	1-553-856-00	SWITCH, KEY BOARD (RADIO OFF)
S105	1-553-856-00	SWITCH, KEY BOARD (FM 1)
S106	1-553-856-00	SWITCH, KEY BOARD (FM 2)
S107	1-553-856-00	SWITCH, KEY BOARD (FM 3)
S108	1-553-856-00	SWITCH, KEY BOARD (MANUAL)
S109	1-554-088-00	SWITCH, KEY BOARD (TIME SET:PUSH)
S110	1-554-088-00	SWITCH, KEY BOARD (TIME SET:M)
S111	1-554-088-00	SWITCH, KEY BOARD (TIME SET:H)
S301	1-571-922-11	SWITCH, LEAF (POWER)
SP1	1-503-680-11	SPEAKER
T1	1-236-385-11	ENCAPSULATED COMPONENT
T201	▲1-449-601-11	TRANSFORMER, POWER
TH1	1-808-831-31	THRMISTOR

ACCESSORY & PACKING MATERIAL

3-750-292-11	MANUAL, INSTRUCTION (ENGLISH,FRENCH,SPANISH)
3-750-292-41	MANUAL, INSTRUCTION (GERMAN,DUTCH,PORTUGUESE,SWEDISH)
*3-897-241-01	CLAMP, CORD
*3-901-584-01	CUSHION (LEFT)
*3-901-585-01	CUSHION (RIGHT)
*3-901-597-01	INDIVIDUAL CARTON
3-902-011-01	SCREW (+B 5X65), FITTING

The components identified by mark ▲ or dotted line with mark ▲ are critical for safety. Replace only with part number specified.