

Stromberg Carlson Co.

Model: 1200

Chassis:

Year: Pre 1950

Power:

Circuit:

IF:

Tubes:

Bands:

Resources

Riders Volume 18 - STROMBERG 18-1

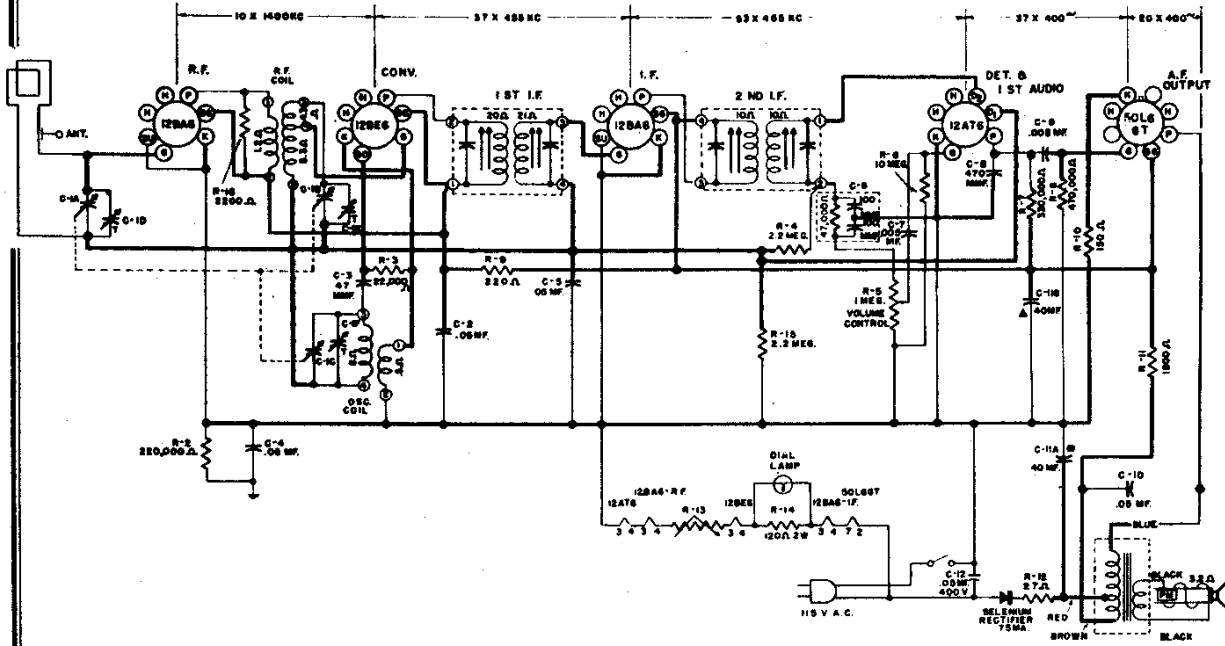
Riders Volume 18 - STROMBERG 18-2

Riders Volume 18 - STROMBERG 18-3

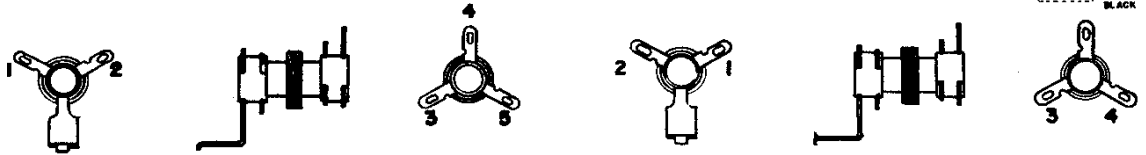
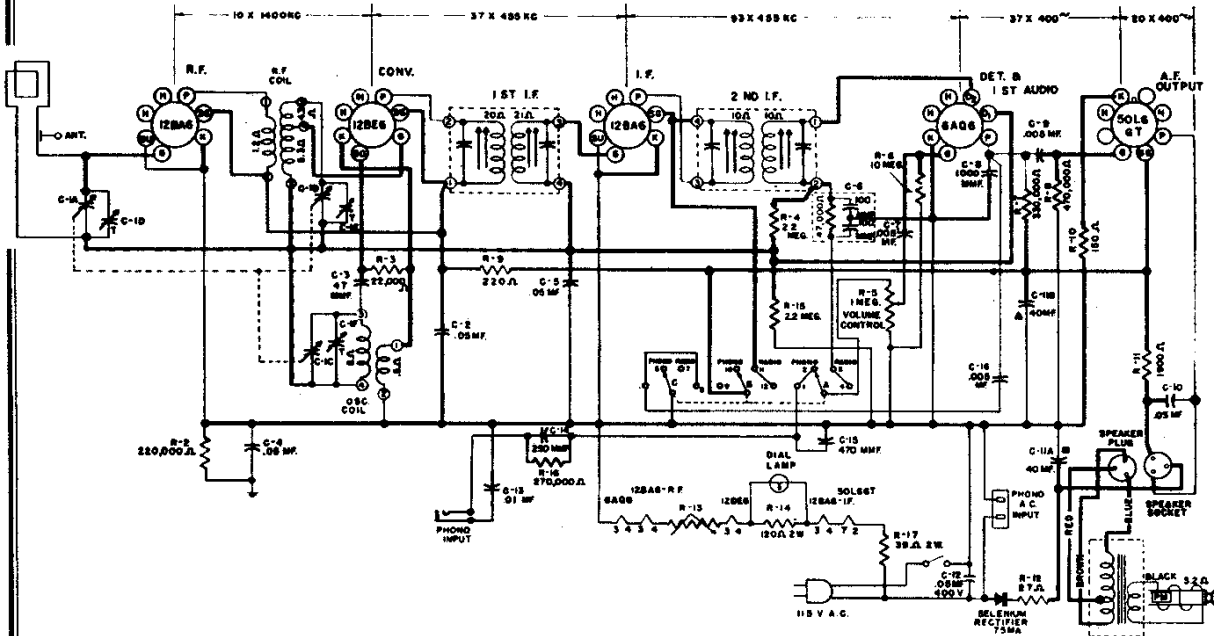
STROMBERG-CARLSON CO.

MODEL 1200
MODEL 1202

SCHEMATIC DIAGRAM, RADIO RECEIVER, MODEL 1200



SCHEMATIC DIAGRAM, RADIO RECEIVER, MODEL 1202



R. F. COIL

OSC. COIL

RECORD CHANGER for MODEL 1202: V-M Model 400, RCD.CH. 15-1

STROMBERG-CARLSON CO.

MODELS 1200, 1202

SPECIFICATIONS

Voltage Rating — Radio	117 Volts AC-DC
Voltage Rating — Phono Motor	117 Volts AC Only
Type of Circuit	Superheterodyne
Tuning Range	540-1640 Kc
Input Power Rating	30 Watts
Intermediate Frequency	455 Kc
Speaker Voice Coil Impedance	3 Ohm
Power Output	1.5 Watts at 10% Distortion

TUBE COMPLEMENT

2	12BA6 Miniature RF and IF Amplifier
1	12BE6 Miniature Converter
1	12AT6 Miniature (1200 only) Detector, AVC and Audio Driver
1	6AQ6 Miniature (1202 only) Detector, AVC and Audio Driver
1	50L6GT Power Output

REPLACEMENT PARTS

Resistors

	1200	Model	1202	
28162	R-16			2200 Ohm
28184		R-16		0.27 Meg.
145032	R-5	R-5		Volume Cont. 1.0 Meg.
149030		R-17		39 Ohm 2 W
149035	R-14	R-14		120 Ohm 2 W
149047	R-11	R-11		1800 Ohm 2 W
149097	R-9	R-9		220 Ohm
149109	R-3	R-3		22000 Ohm
149115	R-2	R-2		0.22 Meg.
149116	R-7	R-7		0.33 Meg.
149117	R-8	R-8		0.47 Meg.
149121	R-4, 15	R-4, 15		2.2 Meg.
149125	R-6	R-6		10.0 Meg.
149168	R-10	R-10		150 Ohm
149243	R-13	R-13		Special N-T-C
149244	R-12	R-12		27 Ohm 2 W

Capacitors

	1200	Model	1202	
25376			C-14	250 mmf. mica
27760	C-9		C-9	.005 mf. 600 V
40632	C-2, 4, 5, 10, 12		C-2,4,5,10,12	.05 mf. 400 V
110026	C-1		C-1	Variable
110209			C-15	470 mmf. mica
110419	C-7		C-7,16	.005 mf. 500 V
110420			C-13	.01 mf. 500 V
110425			C-8	.001 mf. Ceramic
110458	C-3		C-3	47 mmf. Ceramic
110464	C-8			470 mmf. Ceramic
110478	C-6		C-6	Diode Filter
111032	C-11 A, B		C-11 A, B	2, 40 mf. 200 V Electrolytic

Coils—Transformers—Speakers

	1200	Model	1202	
114046	X	X		RF Coil Assem.
114047	X	X		Osc. Coil Assem.
114336	X	X		1st. I. F. Transf.
114337	X	X		2nd. I. F. Transf.
139020	X			Loop Assembly
139022		X		Loop Assembly
155013	X			Speaker Assem.
155029		X		Speaker Only
155052		X		Speaker Assem.
161413	X	X		Output Transformer

Miscellaneous

	1200	Model	1202	
33218	X	X		Power Cord
34421		X		Phono Socket
122022	X			Dial
122025		X		Dial
124014	X			Dial Drive Cord
124016		X		Dial Drive Cord
143012		X		Speaker Plug
144013	X			Pointer
144015		X		Pointer
150034	X	X		Tuning Shaft Assembly
152001	X			Pilot Socket
152038		X		Phono Motor Power Socket*
152040	X	X		Miniature Socket
152041	X	X		Octal Socket
152044		X		Speaker Socket Assem.
152045		X		Pilot Socket
156032	X	X		Tube Hold Down Spring
158015		X		Radio-Phono Switch
162034	X	X		Rectifier

*The Phono Motor is for use on AC only.

Cabinets and Parts

	1200	Model	1202	
108065	X			Brown Cabinet
108066	X			Ivory Cabinet
108078			X	Cabinet
125013		X		Escutcheon and Grille
134004	X			Brown Knob
134005	X			Ivory Knob
134029		X		Volume and Station Knob
134056		X		Radio-Phono Knob
138008	X			Dial Lens
163062	X			Chassis hold down screw
200624		X		Chassis hold down screw

NOTE—When ordering replacement parts always specify series number as well as model and part number. Series number is stamped on back of chassis.