

## **Setchell Carlson, Inc.**

**Model: 416**

**Chassis:**

**Year: Pre 1948**

**Power:**

**Circuit:**

**IF:**

**Tubes:**

**Bands:**

### **Resources**

**Riders Volume 18 - CHANGES 18-11**

**Riders Volume 15 - MISC 15-19**

**RCA Record Changers 960001 Series**

These changers are the same as Model 960001-1 on RCD. CH. page 15-1 of *Rider's Volume XV* except for the following changes:

- 960001-4 Uses L230270 Motor. Has additional pickup shorting switch that shorts out pickup arm when in the rest position.
- 960001-5 Uses pickup cable 72583 of different length.
- 960001-6 Same as 960001-5 except for color of knobs, arm, etc.

**Regal Electronics 208**

This model is the same as models 800 and 801 shown on page 16-1 of *Rider's Volume XVI*:

**Remler Model 5100**

This model appears on Misc. page 16-9 in *Rider's Volume XVI*. The external resistor connected from the suppressor grid (pin 3) to the cathode (pin 5) of the 6SK7 i-f amplifier has been changed from 100 ohms to 220 ohms. The 1-meg resistor connected from the plate (pin 3) of the 6V6GT audio amplifier to the junction of the 0.01- $\mu$ f coupling capacitor and the 220,000-ohm plate load resistor of the 6SQ7 detector, has been removed. A 0.05- $\mu$ f filter capacitor has been connected from each side of the a-c power line to ground.

**Sears-Roebuck 3351, 3451, 3551, Chassis 132.802-2C, -2D, -2E**

These models are the same as Model 3351, Chassis 132.802 on page 12-34 of *Rider's Volume XII*, except for the following changes. A pilot-light shield and snubber assembly has been added, replacing the dial-light shield which was assembled to the dial-pointer shaft bracket. The push-button caps are permanently cemented to the push buttons at the time the set is built.

**Sears-Roebuck 4518, Chassis 101.393**

This model is the same as model 4500, chassis 101.393 shown on page 8-15 of *Riders Volume VIII*.

**Sears-Roebuck 6200A, Chassis 101.800-1; 6203, Chassis 101.800-A**

These models are the same as Model 6200, chassis 101.800, shown on pages 15-13 and 15-2 of *Rider's Volume XV*, except for the following changes. A phono socket has been added to Model 6200A. An ivory cabinet, instead of a brown one, is used on Model 6203.

Part Number	Description
R61010	Cabinet, Ivory (101.800-A)
R44897	Socket, phono (101.800-1)

**Sears-Roebuck 7025, Chassis 132.807-2**

This model is the same as that shown on page 13-63 of *Rider's Volume XIII*, with the following exceptions. The electromagnetic speaker (Part No. N17258) has been replaced by a permanent magnet speaker (Part No. N16993.) The oscillator coil (Part No. 17233) has been rotated 180 degrees and the mounting lug soldered to the back of the chassis to provide a better mounting. This change does not involve any circuit changes.

**Sears Roebuck 7056**

This model appears on pages 13-75 and 13-76 of *Rider's Volume XIII*. The Astatic L-40A crystal cartridge should be used as a replacement cartridge for the phonograph pickup.

**Sears-Roebuck 7080, Chassis 101.809; 7100, Chassis 101.811**

These models, shown on page 16-4 of *Rider's Volume XVI*, use The General Instrument model 205 record changer which is shown on page RCD.CH.15-5 of *Rider's Volume XV*.

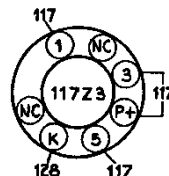
**Sears Roebuck 8052, Chassis 101.808-1C, and 8053, Chassis 101.808-1D**

These models are similar to Model 7054, Chassis 101.808, appearing on pages 16-1 to 16-3 of *Rider's Volume XVI*, except for the appearance of some of the parts and the addition of a variable tone control circuit. This circuit, consisting of a 0.001- $\mu$ f capacitor (C23) in series with a 2-megohm variable resistor (R15), has been connected from the plate of the 7C6 tube to the B minus line. The location of these parts is shown in the accompanying illustration.

The dial stringing diagram for these models is shown in the accompanying diagram and is the same for both Models 8052 and 8053 except that part No. R62057 & part No. R62187 for Model 8053.

**Sentinel Model 286P**

In this model (pages 16-14 to 16-16 of *Rider's Volume XVI*) all factory wiring connections were made to the 117Z3 tube socket at pin number 1. The 117Z3 tube, as originally produced, had an internal connection to pins 1, 3, and 5. Therefore,



When a new type 117Z3 is used in the Sentinel model 286P, pins 1, 3, and 5 must be externally connected. Voltages are here shown.

the foregoing connection was satisfactory, and no jumper was provided.

The new production of 117Z3 tubes provides no internal connection between the number 1 pin and the number 3 and 5 pins. Therefore, it is necessary to wire the 1, 3, and 5 socket connections together, so that this receiver will operate when the original 117Z23 tube is replaced with a recent production tube.

**Setchell Carlson 416**

This model appears on Misc. page 15-19 of *Rider's Volume XV*. The i-f transformers were coated with a low melting point wax (yellow wax). If this wax runs, the trimmers will not stay adjusted. The only remedy is to replace the transformer.

**Sonora RMR-219, RMR-220, RMR-245, 402A Mahogany and Prima Vera**

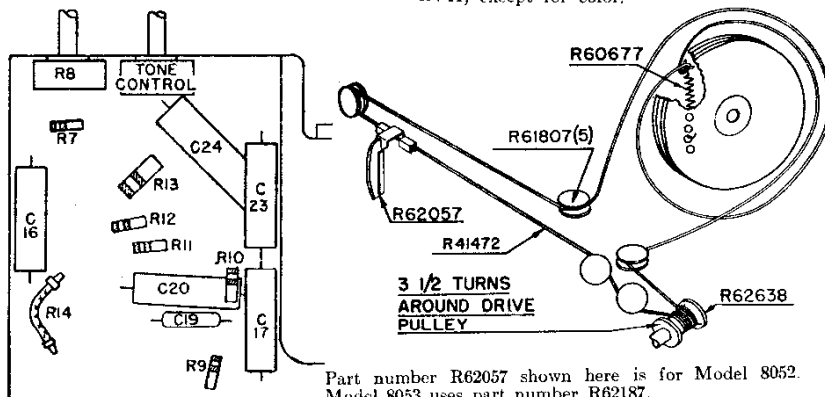
These models are the same as Model RMR appearing on pages 17-6 to 17-8 of *Rider's Volume XVII*.

**Sonora KBU-168**

This model is the same as Chassis KB, appearing on page 12-5 of *Rider's Volume XII*.

**Stewart Warner VM-506261 Record Changer**

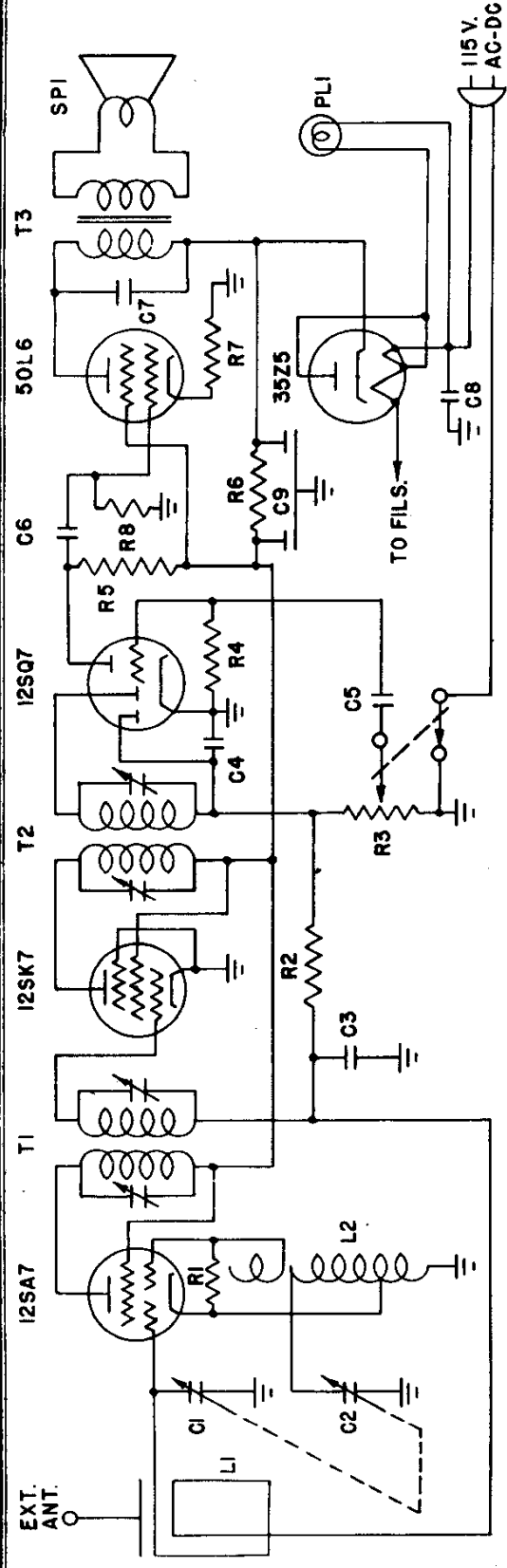
This model is the same as Model VM-505339, appearing on pages RCD.CH. 17-14 to RCD.CH. 17-19 of *Rider's Volume XVII*, except for color.



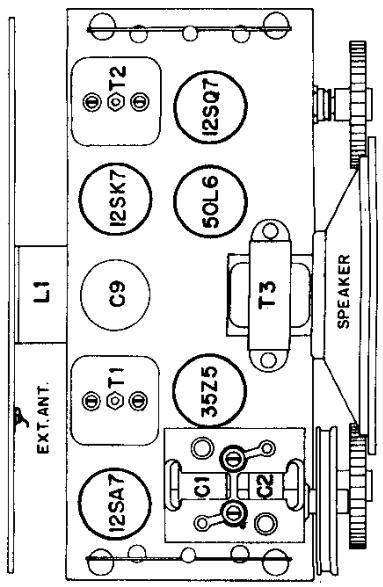
Part number R62057 shown here is for Model 8052. Model 8053 uses part number R62187.

The variable tone control consisting of capacitor C23 and resistor R15 in Models 8052 and 8053.

SETCHELL CARLSON INC.



- R 1 - 25M OHMS 1/3 WATT RESISTOR
- R 2 - 5MEG " " "
- R 3 - 500M " POT. WITH SWITCH
- R 4 - 5MEG " 1/3 WATT RESISTOR
- R 5 - 200M " " "
- R 6 - 1200 " 1/2 " "
- R 7 - 150 " " "
- R 8 - 500M " 1/3 " "
- C 1 - 25M OHMS GANG CONDENSER
- C 2 - OSC. " " "
- C 3 - .05 MFD. 200 V. CONDENSER
- C 4 - .00025MFD. 500 V. CONDENSER
- C 5 - .006 MFD. 500 V. CONDENSER
- C 6 - .01 " 400 V. " "
- C 7 - .02 " " " "
- C 8 - .05 " " " "
- C 9 - 50-50 MFD. 150 V. CONDENSER
- L 1 - LOOP ANTENNA
- L 2 - OSC. COIL
- T 1 - 465 KC. I.F. TRANSFORMER
- T 2 - " " " "
- T 3 - OUTPUT TRANSFORMER
- PL1 - NO.44 PILOT LIGHT
- SPI - 5" P.M. SPEAKER



IF PEAK 465 KC

**SETCHELL-CARLSON, INC.**  
2233 UNIVERSITY AVE. ST. PAUL 4, MINN.  
SCHEMATIC DIAGRAM MODEL NO. 416

MATERIAL  
DATE 11-21-45 DR. BY S. A. C.  
SCALE NONE CND. BY B. T. S.