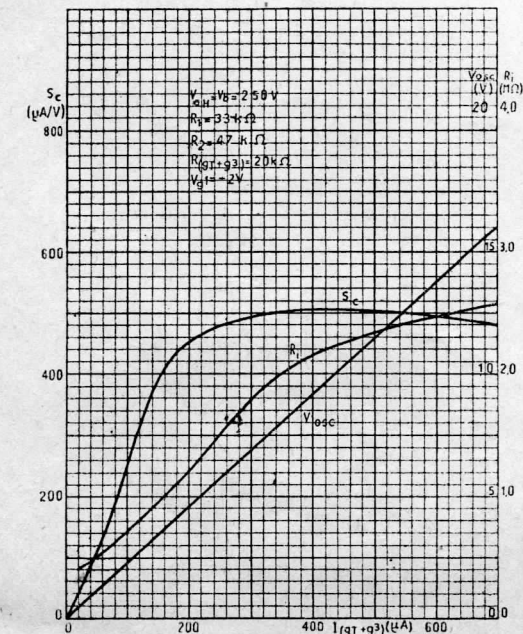
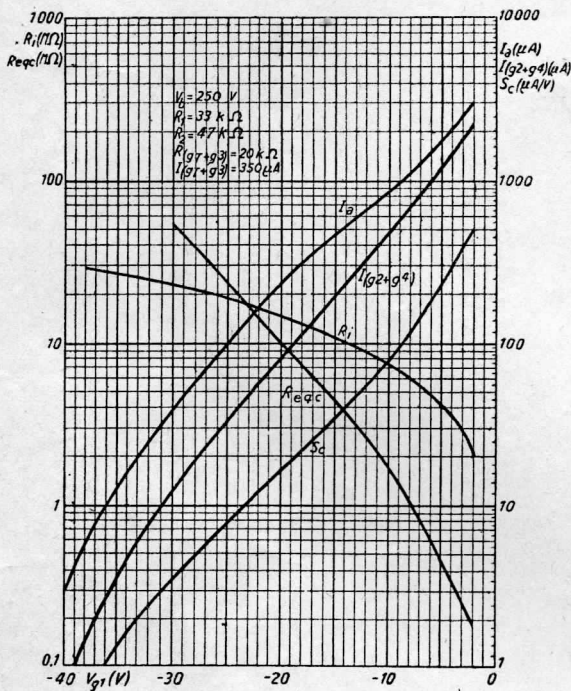


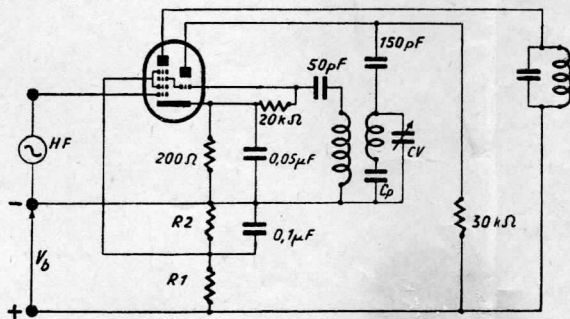
# TRIODE-HEXODE pour changement de fréquence.

# ECH 41



Vf = 6,3 V

If = 0,225



## Caractéristiques d'utilisation de la partie hexode.

V <sub>aH</sub> = V <sub>b</sub>	=	250	V
R <sub>1</sub>	=	33	kΩ
R <sub>2</sub>	=	47	kΩ
R <sub>k</sub>	=	200	Ω
R (g <sub>1</sub> + g <sub>3</sub> )	=	20	kΩ
I (g <sub>1</sub> + g <sub>3</sub> )	=	350	μA
V <sub>g1</sub>	=	- 2	V
V (g <sub>2</sub> + g <sub>4</sub> )	=	105	V
I <sub>aH</sub>	=	3	mA
I (g <sub>2</sub> + g <sub>4</sub> )	=	2,2	mA
Sc	=	500	μA/V
R <sub>i</sub>	=	2	MΩ
Req	=	170	kΩ

## Caractéristiques d'utilisation de la partie triode.

V <sub>b</sub>	=	250	V
R <sub>a</sub>	=	30	kΩ
I <sub>a</sub>	=	4,9	mA
R (g <sub>1</sub> + g <sub>3</sub> )	=	20	kΩ
I (g <sub>1</sub> + g <sub>3</sub> )	=	350	μA
V <sub>osc</sub>	=	8	V
Seff	=	0,55	mA/V

