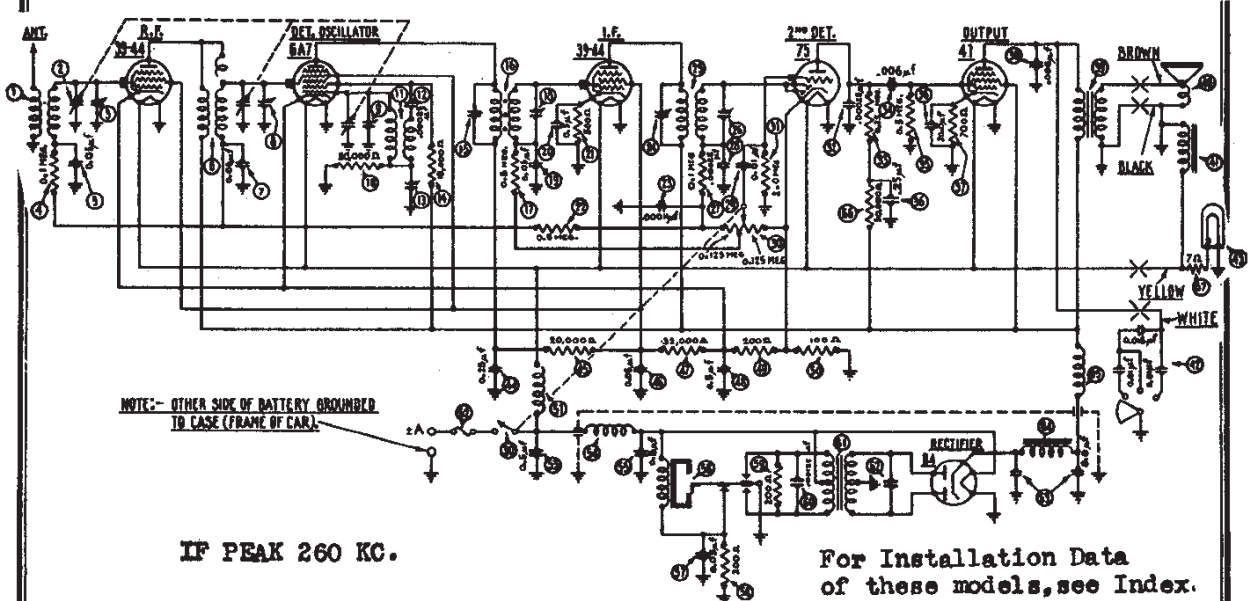


MODELS C & D Nash (AC-989)  
Schematic, Parts

MODEL AC-206 Studebaker  
PHILCO RADIO & TELEV. CORP MODEL ME Pierce-Arrow



NOTE: OTHER SIDE OF BATTERY GROUNDED TO CASE (FRAME OF CAR).

IF PEAK 260 KC.

For Installation Data of these models, see Index.

- |   |  |                                       |                                      |
|---|--|---------------------------------------|--------------------------------------|
| 1 Antenna Transformer..... 32-1220        | 22 Resistor (500,000 ohms).... 6097        | 43 Pilot Lamp..... 6608               | 68 B Chokes..... 32-7038             |
| 2 Tuning Condenser..... 31-1083           | 23 Condenser (.00011 mfd.)... 4519         | 44 Condenser (.25 mfd.)..... 04360    | 69 R. F. Chokes..... 32-1078         |
| 3 1st Padder (in tuning cond.).....       | 24 Padder (prim. 2nd I.F.)... 31-6008      | 45 Resistor (20,000 ohms).... 6649    | 70 Resistor (50,000 ohms).... 4237   |
| 4 Resistor (100,000 ohms)..... 6099       | 25 I.F. Transformer (2nd).... 32-1237      | 46 Condenser (.05 mfd.)..... 30-4020  | 71 Resistor (7 ohms)..... 5110       |
| 5 Condenser (.05 mfd.)..... 30-4020       | 26 Padder (secondary 2nd I.F.)... 31-6008  | 47 Resistor (32,000 ohms).... 3525    | 72 Spark Plug Resistors..... 4531    |
| 6 R.F. Transformer..... 32-1221           | 27 Resistor (100,000 ohms).... 6099        | 48 Condenser (.5 mfd.)..... 30-4048   | Distributor Resistor..... 4546       |
| 7 Condenser (.05 mfd.)..... 30-4020       | 28 Condenser (.00025 mfd.)... 3082         | 49 Resistor (200 ohms)..... 7217      | Screw Type Resistor..... 4851        |
| 8 2nd Padder (in tuning cond.).....       | 29 Condenser (.01 mfd.)..... 30-4051       | 50 Resistor (100 ohms)..... 7838      | Interference Condenser... 30-4007    |
| 9 3rd Padder (in tuning cond.).....       | 30 Vol. Control Assembly..... 38-5280      | 51 A Choke..... 32-1268               | Dial..... 27-5022                    |
| 10 Resistor (50,000 ohms)..... 6098       | 31 Resistor (2,000,000 ohms).... 33-1025   | 52 15 Amp. Fuse..... 7227             | Studs—4 1/2" Special..... 28-6102    |
| 11 Oscillator Transformer..... 32-1222    | 32 Condenser (.00025 mfd.)... 5858         | 53 Condenser (.5 mfd.)..... 30-4061   | Nuts (mounting)..... W55             |
| 12 Condenser (.00025 mfd.)... 3082        | 33 Resistor (250,000 ohms).... 3768        | 54 Vibrator Choke..... 32-1259        | Knob..... 03064                      |
| 13 Padder..... 040008                     | 34 Resistor (.006 mfd.)..... 30-4024       | 55 Condenser (.5 mfd.)..... 30-4061   | Battery Cable..... 38-5296           |
| 14 Resistor (15,000 ohms)..... 6208       | 35 Resistor (500,000 ohms).... 6097        | 56 Vibrator..... 38-5038              | Antenna Lead..... 38-5131            |
| 15 Padder (prim. 1st I.F.)... 31-6007     | 36 Condenser (20 mfd., 25 mfd.)... 30-4065 | 57 Condenser (.05 mfd.)..... 30-4039  | Instrument Panel Control. 42-5088    |
| 16 I.F. Transformer (1st)..... 32-1236    | 37 Resistor (700 ohms)..... 33-3019        | 58 Resistor (200 ohms)..... 7217      | Acorn Nut..... W821                  |
| 17 Resistor (500,000 ohms).... 6097       | 38 Condenser (.006 mfd.)..... 30-4024      | 59 Resistor (200 ohms)..... 7217      | De Luxe Control Assembly 42-5087     |
| 18 Padder (secondary 1st I.F.)... 31-6007 | 39 Output Transformer..... 32-7102         | 60 Condenser (.00125 mfd.)... 5886    | Standard Control Assembly 42-5101    |
| 19 Condenser (.05 mfd.)..... 30-4020      | 40 Cone and Coil..... 38-3020              | 61 Power Transformer..... 32-7131     | Steering Col. Control Assem. 42-5096 |
| 20 Condenser (.5 mfd.)..... 30-4058       | 41 Field Coil Assembly..... 38-3130        | 62 Condenser (.006 mfd.)..... 30-4024 | Gasket..... 27-7290                  |
| 21 Resistor (500 ohms)..... 6977          | 42 Tone Control..... 30-4056               | 63 Filter Condenser..... 30-2015      | Nash Control Plate..... 28-7025      |

Above is Model D Nash-Philco (AC-989). Model C Nash-Philco (AC-989) is similar except that a 42 output tube is used and resistor #37 is 550 ohms, part number 6977.

Studebaker Model AC-206.

This is same as above and is available with 42 output tube and resistor #37 changed to 550 ohms, part number 6977. Items 1 to 67 in above list are identical for Model AC-206. See following items for additional accessories

Pierce-Arrow Model ME

This is same as above except a 42 tube is used in the output and resistor #37 is changed to 550 ohms, part number 6977. Also volume control assembly's part number is changed to 38-5511. Other numbered items in above list are identical for the Model ME. See items below for additional accessories.

- |                                |                                |                               |                                     |                   |                    |                          |                  |                            |                           |                                       |                     |                                      |
|--------------------------------|--------------------------------|-------------------------------|-------------------------------------|-------------------|--------------------|--------------------------|------------------|----------------------------|---------------------------|---------------------------------------|---------------------|--------------------------------------|
| Spark Plug Resistors..... 4531 | Distributor Resistor..... 4546 | Screw Type Resistor..... 4851 | Interference Condenser..... 30-4007 | Dial..... 27-5022 | Studs..... 28-6036 | Nuts (mounting)..... W55 | Knobs..... 03064 | Battery Cable..... 38-5296 | Antenna Lead..... 38-5131 | Instrument Panel Control..... 42-5088 | Acorn Nut..... W821 | Steering Column Control..... 42-5087 |
|--------------------------------|--------------------------------|-------------------------------|-------------------------------------|-------------------|--------------------|--------------------------|------------------|----------------------------|---------------------------|---------------------------------------|---------------------|--------------------------------------|

- |                                   |                                   |                               |                                  |                               |                           |                            |                           |                             |                                  |                               |                                     |                                 |                                 |                            |                                  |                                     |                                     |                                    |                            |                             |   |                            |                      |                          |                    |                             |                                       |                                     |
|-----------------------------------|-----------------------------------|-------------------------------|----------------------------------|-------------------------------|---------------------------|----------------------------|---------------------------|-----------------------------|----------------------------------|-------------------------------|-------------------------------------|---------------------------------|---------------------------------|----------------------------|----------------------------------|-------------------------------------|-------------------------------------|------------------------------------|----------------------------|-----------------------------|---|----------------------------|----------------------|--------------------------|--------------------|-----------------------------|---------------------------------------|-------------------------------------|
| Spark Plug Resistors..... 33-1015 | Distributor Resistor..... 33-1049 | Screw Type Resistor..... 4851 | Interference Condenser..... 4522 | Studs (Set Mtg.)..... 28-6036 | Nuts (Mounting)..... W55A | Battery Cable..... 38-5296 | Antenna Lead..... 38-5131 | Fuse Insulator..... 27-7131 | Speaker (Model A15)..... 38-1048 | Stud (Model A15)..... 28-6132 | Wood Block (Spker. Mtg.)... 27-7350 | Sparker Back Plate..... 27-7360 | Cardboard & Felt Assem... 2697A | Control Unit Assembly..... | Right Hand Mtg. (Walnut) 42-5126 | Left Hand Mtg. (Walnut).... 42-5127 | Right Hand Mtg. (Black).... 42-5128 | Left Hand Mtg. (Black).... 42-5129 | Knobs (Black)..... 27-4058 | Knobs (Walnut)..... 27-4068 | Tuning and Volume Shaft Assembly, 28" Long..... 28-8206 | Face Assembly..... 42-5130 | Pointer..... 28-1805 | Face Gasket..... 27-7331 | Glass..... 27-7325 | Sparker Gasket..... 27-7327 | Gasket (Panel to Casting).... 27-7346 | Speaker Cable Assembly..... 41-3069 |
|-----------------------------------|-----------------------------------|-------------------------------|----------------------------------|-------------------------------|---------------------------|----------------------------|---------------------------|-----------------------------|----------------------------------|-------------------------------|-------------------------------------|---------------------------------|---------------------------------|----------------------------|----------------------------------|-------------------------------------|-------------------------------------|------------------------------------|----------------------------|-----------------------------|---|----------------------------|----------------------|--------------------------|--------------------|-----------------------------|---------------------------------------|-------------------------------------|

©John F. Rider, Publisher

MODEL AC-206 Studebaker  
 PHILCO RADIO & TELEV. CORP. MODEL AC-236 Studebaker  
 Installation Data

4. Insert the car key in the lock cylinder and crush in the same manner that you crush the standard lock, with pliers or vise.
5. Assemble the dial and spring on the cylinder. Push down the retaining spring and replace the lock in the same relative position that it had when removed. With the key in the lock push the lock back, working the lock pin in place in the slot in the lock bar in back of the lock. Push the lock in until the retaining spring snaps in place.
6. Resemble the control on the panel.

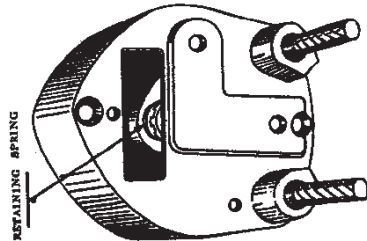


FIGURE 2

**Receiver Location and Installation**

Refer to Fig. 1 showing the location of the holes in the dash. Locate one of the holes and mark with a sharp punch; then use the template furnished with the Receiver to locate the remaining two holes. These holes should be drilled with a 7/16" drill.

Install the Receiver with the control connections to the left side of the car with the speaker facing down. (see Fig. 3)

**Control Unit**

The control unit is mounted on a panel which replaces the dummy door on the left side of the instrument board. These panels are held in place by means of four small metal tabs which pass through corresponding slots in the instrument board proper and are bent to one side. Care should be taken to fasten this panel securely so it does not rattle or mar the finish.

The control is furnished with a blank lock cylinder which must be crushed to match the car keys. This operation must be completed before the control is installed on the instrument board.

**Instructions for Fitting Car Key to Control Lock**

1. Remove the knobs and take off the control unit from the door.
2. Remove the hex-head screw in the rear and take out the pilot lamp bracket.
3. Reach in through the oblong opening in the back of the control unit with a medium size screw driver and press down on the brass retaining lock spring, at the same time working the lock cylinder forward.

(See Fig. 2).

**Steering Column Control Unit**

For installation in Studebaker cars prior to the 1934 models a special steering column control kit is available,

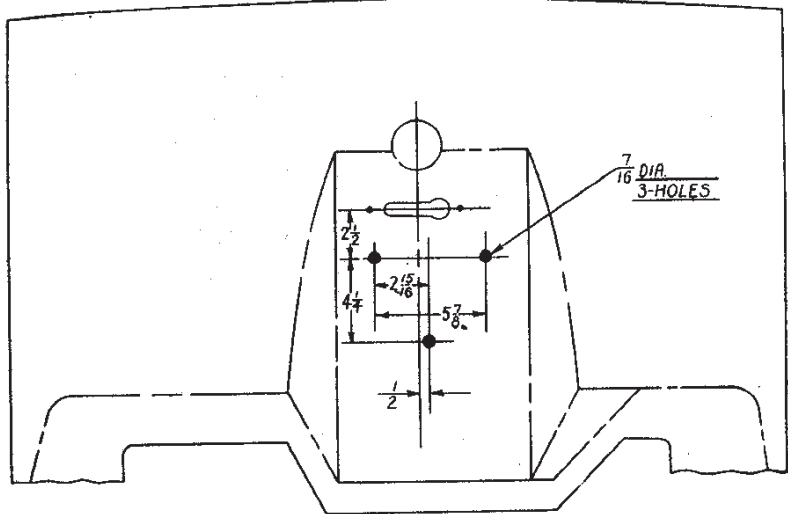


FIGURE 1

Studebaker Stock No. AC-207. This kit includes a steering column control unit with the proper length flexible shafts and all the necessary hardware for installation on the steering column.

**Control Shaft Installation**

Turn the volume control (lower knob in panel mounting, left hand knob in steering column mounting) to a position where the key will lock it. Loosen the set screws in both shaft couplings and connect the volume control shaft to the rear coupling (nearest the dash). Then connect the tuning control shaft in the front coupling (nearest the front seat) and tighten all the set screws. **Battery Cable Connection** (See Fig. 3)

Connect the battery cable to the Receiver by means of the fuse housing connector which fastens by inserting and making a slight turn clockwise, the other end must be connected to the right side of the ammeter and the cable dressed up behind the Receiver. Be sure the fuse and fuse insulator are placed in the fuse housing before the battery cable is connected to the Receiver.

The antenna cable must be plugged into the receptacle on the left side of the Receiver near the top and run along the instrument board to the left hand windshield post where it must be connected to the car antenna lead and the shielding grounded. Connect the black wire from the dial light on the control unit under the screw on the lower left side of the speaker face.

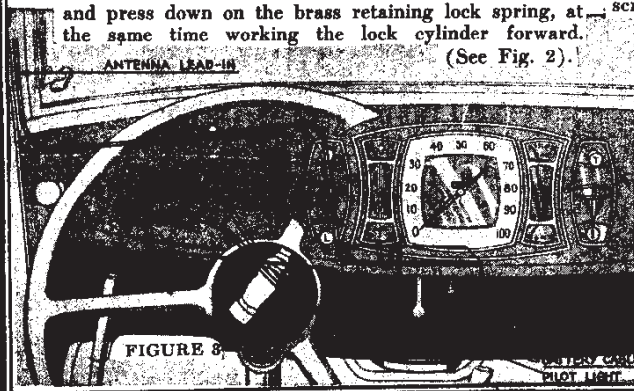


FIGURE 3