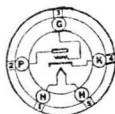
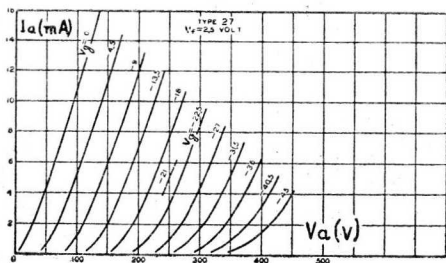


27
27/S

27
27/S

TRIODE
(HF - DET - LF)

V _f	=			2,5		V.
I _f	=			1,75		A.
V _a	=	90	135	180	250(max)	V.
V _g	=	-6	-9	-13,5	-21	V.
I _a	=	2,7	4,5	5,0	5,2	mA.
g	=	9	9	9	9	
R _i	=	11	9	9	9,25	kΩ
S	=	0,82	1,0	1,0	0,975	mA/V.
R _k	=	2,2	2	2,7	4	kΩ



27(S)