

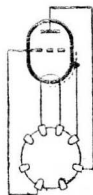
KC 4

KC 4

TRIODE

($L F_w$)

V_f	=		2,0	V.
I_f	=		0,1	A.
$V_a(\text{max})$	=	90	135	V.
I_a	=	0,5	2,2	mA.
V_{gl}	=	-1,5	-1,5	V.
$S(\text{norm})$	=	0,8	1,4	mA/
g	=	30	30	
$R_i(\text{norm})$	=	37.500	21.500	Ω



KC4