

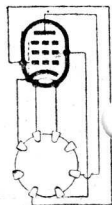
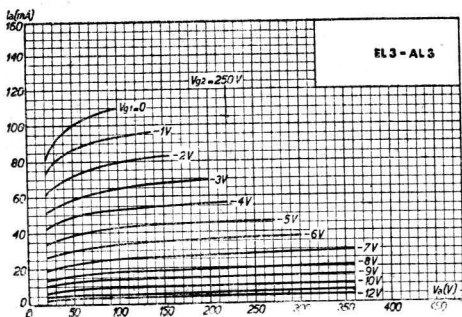
EL 3

PENTHODE

(E)

EL 3

V_f	=	6,3	V.
I_f	=	1,2	A.
$V_a(\text{max})$	=	250	V.
I_a	=	36	mA.
V_{g1}	=	-6	V.
V_{g2}	=	250	V.
I_{g2}	=	5	mA.
$S(\text{norm})$	=	9,5	mA/V.
$R_i(\text{norm})$	=	50.000	Ω
R_a	=	7.000	Ω
R_k	=	150	Ω
$W_a(\text{max})$	=	9	Wtt.
W_o	=	4,3	Wtt.



EL3