

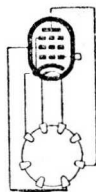
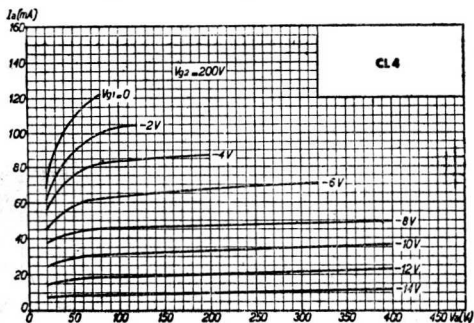
CL 4

CL 4

PENTHODE

(E)

V_f	=	33,0	V.
I_f	=	0,2	A.
$V_a(\text{max})$	=	200	V.
I_a	=	45	mA.
V_{g1}	=	-8,5	V.
V_{g2}	=	200	V.
I_{g2}	=	6,0	mA.
$S(\text{norm})$	=	8,0	mA/V.
$R_i(\text{norm})$	=	45.000	Ω
R_a	=	4.500	Ω
R_k	=	170(1) 140(2)	Ω
$W_a(\text{max})$	=	9	Wtt.
$W_o(10\%)$	=	4	Wtt.

(1) $\rightarrow E_B$ (2) $\rightarrow E_A$ 

CL 4