

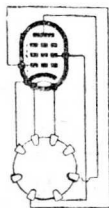
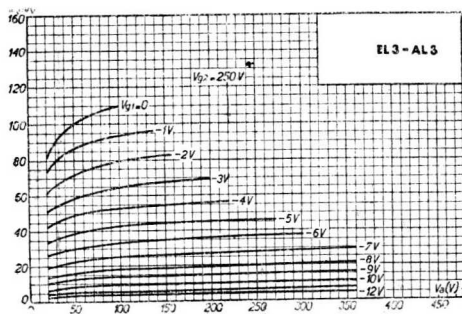
AL 3

PENTHODE

(E)

AL 3

$V_f$	=	4,0	V.
$I_f$	=	1,85	A.
$V_a(\text{max})$	=	250	V.
$I_a$	=	36	mA.
$V_{g1}$	=	-6,5	V.
$V_{g2}$	=	250	V.
$I_{g2}$	=	4	mA.
$S(\text{norm})$	=	9	mA/V.
$g$	=	55	
$R_i(\text{norm})$	=	50.000	$\Omega$
$R_a$	=	7.000	$\Omega$
$R_k$	=	160	$\Omega$
$W_a(\text{max})$	=	9	Wtt.
$W_o(10\%)$	=	4,5	Wtt.



AL 3