

INTEGRATED AMPLIFIER



SEPARATE AMPLIFIER



VACUUM TUBE AMPLIFIER



ANALOG PLAYER



DIGITAL PLAYER



OTHERS





1925 to 1975

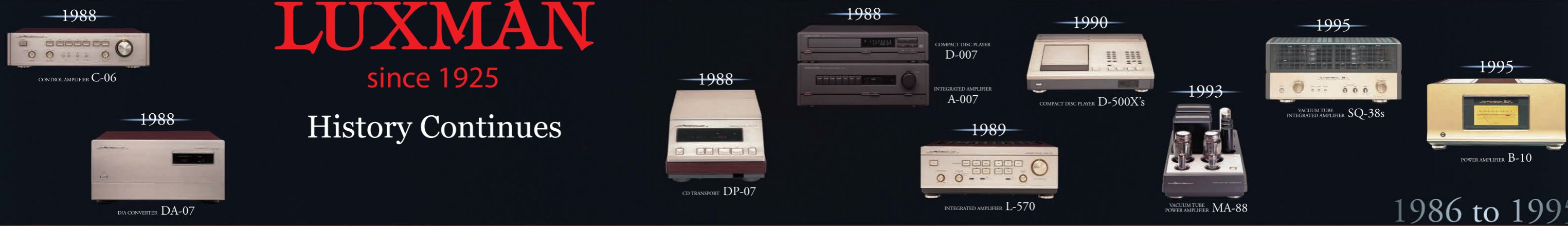


1976 to 1985

LUXMAN

since 1925

History Continues



1986 to 1995



1996 to 2005



2006 to 2017

LUXMAN's Legacy



The listener deserves heart-felt joy when pursuing natural, un-coloured music reproduction.

This has been our philosophy for over 90 years, since our company was founded in 1925.

Where technology and art join with the listener, a wonderful environment is created.

Good sound enriches your life.

Enjoy this comforting space as you become one with the music.

LUXMAN's Performance Engine for Powerful, Natural, Organic and Wholesome Sound

A piece of audio equipment should offer excellent performance specifications. Yet a product that performs the best on paper is not necessarily the best sounding one, because there is no way to relate specs to the degree of emotional impact in the heart of the listener. While we at LUXMAN place great importance on quantitative analysis of our products, still greater significance is given to actual auditions. In essence, our performance concept is to ensure that components produce the most natural sound possible when our products play back music.



Our senses are quick to detect unnaturalness in what we hear. Artificial sound tires us, but rich natural sound relaxes and frees us from stress and tension, letting us enjoy music at the deepest level. The next step is to carefully examine each and every circuit and component - of which there are a multitude! Then we devise ways to overcome mutual interference, partial resonance and other causes of sound degradation. Finally, we subject the product to critical fine-tuning for optimal sound quality. Here, LUXMAN's over 90 years of experience and know-how are put to full use.

INTEGRATED AMPLIFIER

L-509X Integrated Amplifier

NEW



The L-509X incorporates the features of both a high quality separate amplifier and a high performance integrated amplifier into one product. The L-509X is equipped with many desirable features, such as the New LECUA 1000, a discretely configured buffer circuit in the output stage of the pre-amplifier circuit, ODNF (Only Distortion Negative Feedback) original amplifier feedback circuit and a power supply with independent left and right channel blocking capacitors. A top panel has a beautiful hair-line finish and illuminated analogue meters with white LEDs add to the elegant and stylish appearance.

SPECIFICATIONS:

- Rated Output : 120W+120W (8Ω) / 220W+220W (4Ω)
- Input Sensitivity / Impedance : PHONO (MM) 2.5mV / 47kΩ, PHONO (MC) 0.3mV / 100Ω, LINE 180mV / 47kΩ
- Total Harmonic Distortion : 0.007% or lower (1kHz / 8Ω), 0.06% or lower (20Hz~20kHz / 8Ω)
- S/N Ratio : LINE 20Hz~100kHz (within -3.0dB)
- Frequency Response : LINE 20Hz~100kHz (within -3.0dB)
- Power Consumption : 380W, 150W (under no signal), 0.5W (at standby)
- External Dimensions : 440 (W) x 193 (H) x 463(D) mm
- Weight : 29.3kg

L-550AX MarkII ^{Pure A} Integrated Amplifier



L-550AX MarkII is the successor of the L-550AX which launched in 2011. L-550AXII makes its debut featuring a high-precision electric controlled attenuator LECUA and the latest version of our proprietary high sound quality feedback circuit ODNF 4.0, both are used in LUXMAN's upper range amplifiers. Keeping the symbolic appearance with traditional pointer-type meters on the front panel, the essence of the expressive power that made a huge step forward whilst developing the flagship integrated amplifier L-590AXII was poured into this model to provide its dense expression particular to pure A class sound and more detailed reproduction of the low range.

SPECIFICATIONS:

- Rated Output : 20W+20W (8Ω) / 40W+40W (4Ω)
- Input Sensitivity / Impedance : PHONO (MM) 2.5mV / 47kΩ, PHONO (MC) 0.3mV / 100Ω, LINE 180mV / 47kΩ
- Total Harmonic Distortion : 0.007% or less (1kHz / 8Ω), 0.02% or less (20Hz ~ 20kHz / 8Ω)
- S/N Ratio : LINE 105dB or more
- Frequency Response : LINE 20Hz ~ 100kHz (+0, -3.0dB)
- Power Consumption : 230W, 170W (no signal), 0.5W (standby)
- Dimensions : 440 (W) x 178 (H) x 454 (D) mm
- Weight : 24.3kg

L-590AX MarkII ^{Pure A} Integrated Amplifier



The L-590AX MarkII draws upon LUXMAN's decades of experience in amplifier design to deliver an exquisite combination of rich sonic expression, fine detail, wide bandwidth and dynamic gusto. Stereo output is rated at 30W per channel into 8Ω and 60W per channel into 4Ω.

In order to achieve this level of power without sonic compromise, LUXMAN has implemented its ODNF 4.0 drive circuit utilizing a three-parallel push-pull structure with three Darlington circuit stages. An EI-type LUXMAN 'Ultimate Efficiency Power Transformer' rated at 615VA forms the heart of this amp's power supply, with plentiful regulation ensuring an unshakable response to any load fluctuations. A high-capacity block capacitor contributes to the L-590AXII's ability to deliver lashings of power instantaneously yet remain firmly in control, while the amp's low-impedance transmission design, carefully selected custom components and short, fully optimized signal paths deliver maximum sonic purity.

The L-590AXII has eight output boards, driving eight outputs in total, effectively four L & R outputs.

SPECIFICATIONS:

- Rated Output : 30W+30W (8Ω) / 60W+60W (4Ω)
- Input Sensitivity / Impedance : PHONO (MM) 2.5mV / 47kΩ, PHONO (MC) 0.3mV / 100Ω, LINE 180mV / 47kΩ
- Total Harmonic Distortion : 0.005% or less (1kHz / 8Ω), 0.02% or less (20Hz ~ 20kHz / 8Ω)
- S/N Ratio : LINE 105dB or more
- Frequency Response : LINE 20Hz ~ 100kHz (+0, -3.0dB)
- Power Consumption : 330W, 260W (no signal), 0.5W (standby)
- Dimensions : 440 (W) x 193 (H) x 463 (D) mm
- Weight : 28.4kg

L-505uX MarkII ^{NEW} Integrated Amplifier



The L-505uXII is the eagerly awaited MarkII version of the popular L-505uX that has been at the forefront of integrated amplifier design since its launch in 2011.

The L-505uXII is loaded with proprietary technologies such as Version 4.0 of LUXMAN's ODNF (Only Distortion Negative Feedback), as well as LECUA (Luxman Electronically Controlled Ultimate Attenuator) and a discretely configured buffer circuit for pre-amp output just like our flagship control amplifier C-900u. Polished with all our knowhow as our standard model beyond its class, the history of a long run has just begun.

SPECIFICATIONS:

- Rated Output : 100W+100W (8Ω) / 150W+150W (4Ω)
- Input Sensitivity / Impedance : PHONO (MM) 2.5mV / 47kΩ, PHONO (MC) 0.3mV / 100Ω, LINE 180mV / 47kΩ
- Total Harmonic Distortion : 0.009% or less (1kHz / 8Ω), 0.09% or less (20Hz ~ 20kHz / 8Ω)
- S/N Ratio : LINE 104dB or more
- Frequency Response : LINE 20Hz ~ 100kHz (+0, -3.0dB)
- Power Consumption : 300W, 85W (no signal), 0.4W (standby)
- External Dimensions : 440 (W) x 178 (H) x 454 (D) mm
- Weight : 22.5kg

L-507uX MarkII ^{NEW} Integrated Amplifier



The L-507uXII integrated amplifier earns its MarkII status by combining the knowledge and experience of developing refined pure Class A integrated amplifier with state of the art technology. The L-507uXII achieves spatial expression, overwhelming power and clarity to attract many audio enthusiasts.

The New LECUA 1000* enables the volume to be adjusted smoothly and finely in 88 steps thereby minimizing the deterioration of the sound quality. ODNF is also upgraded to Version 4.0 resulting in a dramatic enhancement of accuracy in distortion detection. A 3-parallel push-pull structure output stage achieves complete output linearity of 110W+110W (8Ω) and 210W+210W (4Ω)

SPECIFICATIONS:

- Rated Output : 110W+110W (8Ω) / 210W+210W (4Ω)
- Input Sensitivity / Impedance : PHONO (MM) 2.5mV / 47kΩ, PHONO (MC) 0.3mV / 100Ω, LINE 180mV / 47kΩ
- Total Harmonic Distortion : 0.007% or less (1kHz / 8Ω), 0.08% or less (20Hz ~ 20kHz / 8Ω)
- S/N Ratio : LINE 105dB or more
- Frequency Response : LINE 20Hz ~ 100kHz (+0, -3.0dB)
- Power Consumption : 350W, 86W (no signal), 0.4W (standby)
- Dimensions : 440 (W) x 178 (H) x 454 (D) mm
- Weight : 25.0kg

C-700u Control Amplifier



LUXMAN's new C-700u preamp benefits from the same uncompromising construction and attention to detail as the C-900u. At its heart lies LUXMAN's ODNF4.0 (Only Distortion Negative Feedback) amp circuit, which restricts feedback to distortion components only, thus greatly enhancing S/N performance. This is directly coupled to the New LECUA1000 attenuator circuit, trickled down from the flagship C-900u preamp, allowing an extremely fine degree of volume control and left/right balance adjustment whilst maintaining sound quality at the highest level.

SPECIFICATIONS:

- Input Sensitivity / Impedance : Unbalanced 250mV / 46k Ω , Balanced 250mV / 67k Ω
- Output Voltage / Impedance : Unbalanced Rating 1V / 90 Ω (maximum 11V), Balanced Rating 1V / 600 Ω (maximum 11.5V)
- Frequency Response : 20Hz ~ 20kHz (+0, -0.1dB), 5Hz ~ 120kHz (+0, -3.0dB)
- S/N Ratio : Unbalanced 125dB, Balanced 122dB (maximum output)
- Power Consumption : 28W, 2.0W (standby)
- Dimensions : 440 (W) x 130 (H) x 430 (D) mm
- Weight : 14.6kg

C-900u Control Amplifier



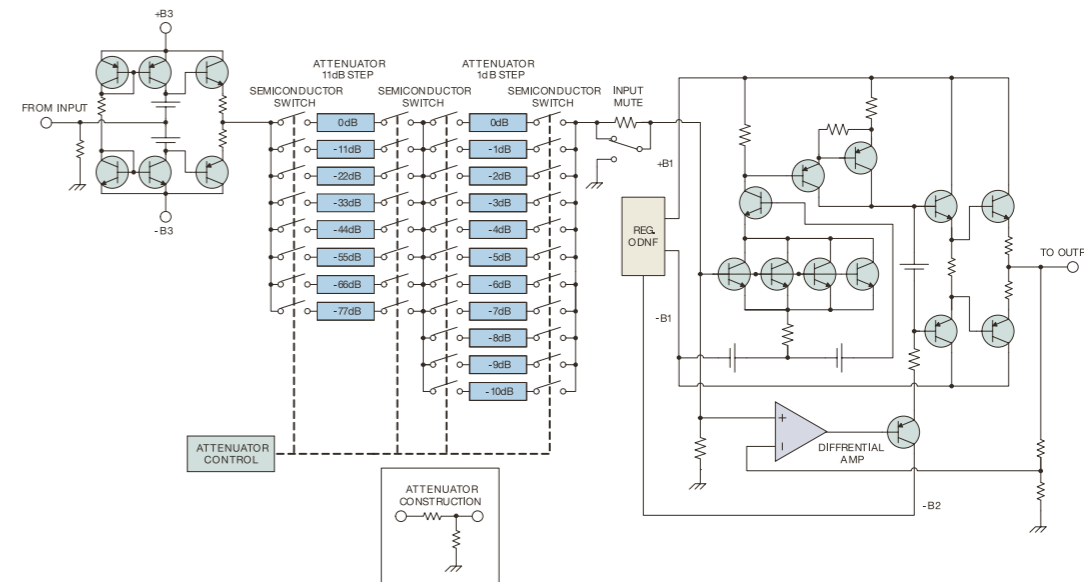
C-900u was created for the pursuit of the uppermost tone quality. A fully balanced design with tone controls is extremely difficult to implement but the LUXMAN engineers have achieved this to allow music lovers to enjoy all of their music collection.

The balanced amplification circuit, having a four module configuration, in which the left & right and the hot & cold of audio signals are set to be independent, is introduced to suppress any unnecessary noise generation. The combination of the evolved ODNF version 4.0 circuit and a robust power supply unit has achieved high S/N performance sound quality without distortion. LUXMAN's original fixed resistance switching type attenuator, the latest version of the New LECUA 1000 is used for the volume adjustment mechanism that is the major key to this control amplifier.

SPECIFICATIONS:

- Input Sensitivity / Impedance : Unbalanced 255mV / 43k Ω , Balanced 255mV / 86k Ω
- Output Voltage / Impedance : Unbalanced Rating 1V / 90 Ω (maximum 11V), Balanced Rating 1V / 180 Ω (maximum 22.5V)
- Frequency Response : 20Hz ~ 20kHz (+0, -0.1dB), 5Hz ~ 120kHz (+0, -3.0dB)
- S/N Ratio : Unbalanced 123dB, Balanced 126dB (maximum output)
- Power Consumption : 42W, 2.2W (standby)
- Dimensions : 440 (W) x 130 (H) x 430 (D) mm
- Weight : 19.7kg

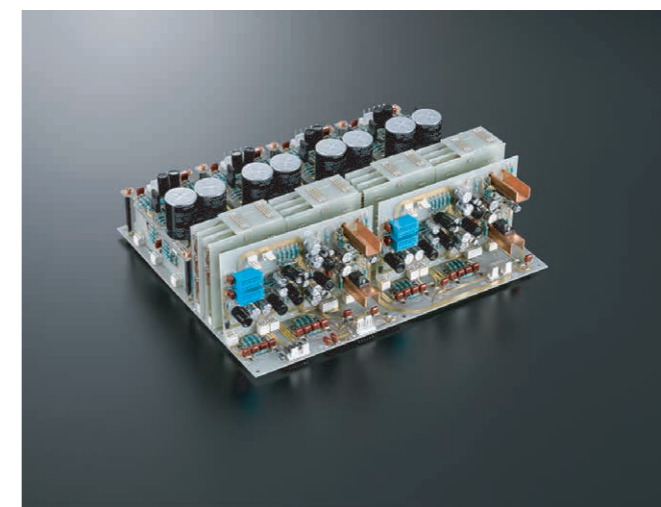
The New LECUA1000 computerized attenuator



The new LECUA1000 computerized attenuator, with an 88 step amplifier circuit developed for the C-900u, is mounted in the volume adjustment system for the first time in a LUXMAN integrated amplifier and is an essential part of the pre-amplifier circuit. This pre-amplifier circuit uses the same design as the top end control amplifier, the C-900u. The new LECUA1000 enables smooth adjustment of the volume control with minimal deterioration of sound quality.

A 3D topography has been introduced in the new LECUA1000 that allows components to be mounted in three dimensions with the attenuator circuit directly connected to the amplification circuit, thereby minimizing cable routing and improving efficiency. Furthermore, this type of layout is highly durable, resistant to external vibration and electronically resistant to changes in sound quality caused by volume level adjustment.

*LECUA stands for LUXMAN Electronically Controlled Ultimate Attenuator.



LECUA1000

M-700u Stereo Power Amplifier



The M-700u power amp is the perfect partner for the C-700u, drawing upon LUXMAN's decades of experience in amplifier design to deliver an exquisite combination of rich sonic expression, fine detail, wide bandwidth and dynamic gusto. Stereo output is rated at 120W per channel into 8Ω and 210W per channel into 4Ω, achieving up to 840W per channel into 1Ω instantaneously. There is also a user-selectable mono mode with a rated output of 420W into 8Ω. In order to achieve this level of power without sonic compromise, LUXMAN has implemented its ODNF 4.0 drive circuit utilizing a four-parallel push-pull structure with three-stage Darlington, improving distortion characteristics whilst is capable of a configuring with a wide variety of speaker systems including the use of a BTL connection.

SPECIFICATIONS:

- Rated Output : 120W+120W (8Ω) / Stereo, 240W+240W (4Ω) / Stereo, 420W (8Ω) / Monaural
- Maximum Power Output : 840W+840W (1Ω) / Stereo, 1680W (2Ω) / Monaural
- Input Sensitivity : 1.1V / 120W (8Ω)
- Input Impedance : Unbalanced 51kΩ, Balanced 34kΩ
- Total Harmonic Distortion : 0.009% or Less (1kHz / 8Ω), 0.1% or less (20Hz ~ 20kHz / 8Ω)
- Frequency Response : 20Hz ~ 20kHz (+0, -0.1dB), 1Hz ~ 130kHz (+0, -3.0dB)
- S/N Ratio : 115dB
- Power Consumption : 370W, 110W (no signal), 0.4W (idle)
- Dimensions : 440 (W) x 190 (H) x 427 (D) mm
- Weight : 27.5kg

M-900u Stereo Power Amplifier



The M-900u stereo power amplifier has been created to bring out the best sound expression from any speaker system. A rich sonic gradient has been achieved, from deep bass to clear high tones, with sufficient driving power acquired by structurally connecting 4 parallel x 2 module push-pull output units. The updated 4.0 version of LUXMAN's original ODNF circuit provides both a lively feeling and an ultra-low distortion characteristic.

The M-900u is a flagship stereo amplifier, with 12W (8Ω) pure class A and 15W x 2 (8Ω) or 600W x 1 (8Ω) when used as a mono block. As a stereo amplifier, the M-900u is stable into a 1Ω load, where it delivers 1,200W, peak power.

SPECIFICATIONS:

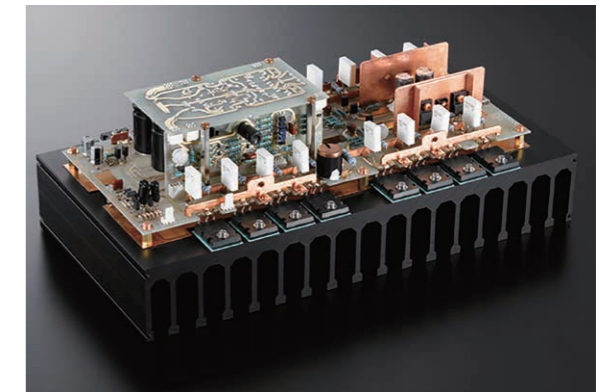
- Rated Output : 150W+150W (8Ω) / Stereo, 300W+300W (4Ω) / Stereo, 600W (8Ω) / Monaural
- Maximum Power Output : 1200W+1200W (1Ω) / Stereo, 2400W (2Ω) / Monaural
- Input Sensitivity : 1.24V / 150W (8Ω)
- Input Impedance : Unbalanced 51kΩ, Balanced 34kΩ
- Total Harmonic Distortion : 0.008% or less (1kHz / 8Ω), 0.1% or less (20Hz ~ 20kHz / 8Ω)
- Frequency Response : 20Hz ~ 20kHz (+0, -0.1dB), 1Hz ~ 130kHz (+0, -3.0dB)
- S/N Ratio : 117dB
- Power Consumption : 540W, 280W (no signal), 1.0W (idle)
- Dimensions : 440 (W) x 224 (H) x 485 (D) mm
- Weight : 48.0kg

Appealing to sensitivity with rich, expressive power -ODNF-

LUXMAN has many original audio engineering technologies, amongst them is the application of Global Negative Feedback (used widely in the audio industry), though they no longer use it themselves.

LUXMAN actually uses a distortion reduction circuit called "Only Distortion Negative Feedback" or ODNF.

This system works by isolating noise and distortion in the musical signal at the output and sparingly applying negative feedback systems to suppress them. Conventional negative feedback systems can have an adverse effect on the music, introducing phase distortion. The ODNF circuit features ultra-high slew rate and ultra low distortion that it doesn't need to use phase compensation for the music signal amplifying circuits. This new technology also ensures that the need for a DC servo circuit is alleviated, again improving sound quality. The neat thing is that ODNF is only applied to that portion of the music signal that is noisy or distorted, if the rest of the music is clean, nothing needs to be done.



ODNF4.0

VACUUM TUBE STEREO POWER AMPLIFIER

MQ-88uC

Vacuum Tube Stereo Power Amplifier

NEW



Since its launch as a matching pair for CL-38u, MQ-88u has been upgraded both interior and the exterior, with many of our own customizations, reborn as MQ-88uC. Equipped with KT88 output tubes in triode connection made by JJ Electronic (Slovakia) known for their powerful and rich tone. Beautiful dark brown finish instead of black is adopted, as the color beautifully matches the wooden case. For more powerful reproduction with lower distortion, independent speaker terminals are provided for 4, 8 and 16Ω speakers.

SPECIFICATIONS:

- Rated Output : 25W+25W (4Ω, 8Ω, 16Ω)
- Input Sensitivity / Impedance : 890mV / 25W (8Ω) / 32kΩ
- Total Harmonic Distortion : 0.1% or less (1kHz / 8Ω/ 1W), 0.5% or less (20Hz~20kHz / 8Ω/ 1W)
- S/N Ratio : 105dB or more
- Frequency Response : 20Hz~20kHz (+0, -0.2dB), 10Hz~65kHz (within -3.0dB)
- Power Consumption : 170W, 140W (no signal)
- External Dimensions : 440 (W) x 184 (H) x 230 (D) mm
- Weight : 16.1kg

VACUUM TUBE CONTROL AMPLIFIER

CL-38uC

Vacuum Tube Control Amplifier

NEW



The CL-38uC retains the traditional look with its wooden case but the body width is now expanded to a LUXMAN standard size of 440mm (the CL-38u had a width of 400mm) and balanced inputs have been added, as our customers have requested. All vacuum tubes (ECC83S x 3, ECC82 x 5) are changed to JJ Electronic (Slovakia) for the more reliable operation and Nichicon made high voltage metallized polypropylene film coupling capacitors have been introduced for a supple, natural tone.

SPECIFICATIONS:

- Input Sensitivity / Impedance : PHONO (MM) 2mV / 47kΩ, PHONO (MC high) 0.3mV / 100Ω, PHONO (MC low) 0.08mV / 30Ω, LINE 166mV / 50kΩ
- Total Harmonic Distortion : 0.006% or less, PHONO (MC HIGH) : 63dB or more, PHONO (MC LOW) 60dB or more, LINE : 99dB or more
- S/N Ratio : PHONO (MM) : 68dB or more, PHONO (MC high) : 63dB or more, LINE : 99dB or more
- Frequency Response : PHONO 20Hz~20kHz, LINE 10Hz~70kHz (-3.0dB or lower)
- Power Consumption : 35W
- External Dimensions : 440 (W) x 169 (H) x 307(D) mm
- Weight : 13.3kg

VACUUM TUBE INTEGRATED AMPLIFIER

LX-380

Vacuum Tube Intergrated Amplifier



The LX-380's output configuration features a high quality and stable power supply and a sensitive and warm quartet of beam powered 6L6GC output tubes.

A sensitive and flexible Mullard driver system is coupled with two pairs of 6L6GC power tubes in push-pull configuration.

The stable fixed grid bias voltage maintains the 20W per channel output power which is more than adequate for quality home music enjoyment.

This unit was not constructed with just power in mind but as a vacuum tube amplifier with a discrete design which enables the listener to experience the depth and brilliance of any recording.

The experience gained over our long history of designing audio products contributes to guaranteed satisfaction and enjoyment for the customer.

SPECIFICATIONS:

- Rated Output : 20W+20W (6Ω) / 18W+18W (8Ω) / 14W+14W (4Ω)
- Input Sensitivity Impedance : PHONO (MM) 3.0mV / 47kΩ, PHONO (MC) 0.38mV / 100Ω, LINE 180mV / 47kΩ
- Total Harmonic Distortion : 1% or less (1kHz, 20W / 6Ω)
- S/N Ratio : LINE 95dB or more
- Frequency Response : LINE 20Hz ~ 80kHz (+0, -3.0dB)
- Power Consumption : 127W
- Dimensions : 440 (W) x 197 (H) x 403 (D) mm
- Weight : 17.6kg

COMPACT DISC PLAYER

D-380

Compact Disc Player



The D-380 is a CD player that proudly bears the Golden Number "38" of the LUXMAN vacuum tube amp series and also features a tube output stage.

The vacuum tube section is comprised of a buffer, an ECC82 tube and a finely tuned, dedicated output transformer.

As for the digital circuit, the DAC chip supports 32 bit audio and is equipped with a jitter reduction IC.

The D-380's traditional wooden cabinet provides a classic, attractive look and brings renewed pleasure to many music fans familiar with how CDs have become mature music media.

SPECIFICATIONS:

- Supported Media : CD
- Analog Output : Unbalanced x 1
- Digital Output : Coaxial x 1, Optical x 1
- Output Voltage / Impedance : Solid State 2.1V / 300Ω, Vacuum Tube 2.4V / 300Ω
- Frequency Response : Solid State 20Hz ~ 20kHz (+0, -0.2dB), Vacuum Tube 20Hz ~ 20kHz (+0.1, -0.3dB)
- Total Harmonic Distortion : Solid State 0.005%, Vacuum Tube 0.8%
- S/N ratio : Solid State 115dB, Vacuum Tube 105dB
- Power Consumption : 16W
- Dimensions : 440 (W) x 167 (H) x 286 (D) mm
- Weight : 10.8kg

MQ-300 Vacuum Tube Stereo Power Amplifier



The MQ-300 is a new generation of vacuum tube stereo amplifier from LUXMAN that uses the most thoroughly selected parts and circuits to maximise the performance and tonal quality of the latest direct heated triode - the TA-300B. Following in the design footsteps of the masterpiece MB-300 released in 1984, the MQ-300 combines traditional design with cutting edge technology.

Since the foundation of the company in 1925, and the subsequent release of the MB-300, LUXMAN has pursued certain core sound reproduction principles. These principles are embodied in the MQ-300 as 'honest and natural sound quality, feeling the sound field without exaggeration', 'feeling a unified sound with sufficient reproduction across the whole audio spectrum' and to achieve 'fatigue free listening enjoyment'. Expressing the original sound whilst bringing the spirit of each musical piece to life are qualities intrinsic to the MQ-300 and those principles.

SPECIFICATIONS:

- Rated Output : 8W+8W (16Ω, 8Ω, 4Ω)
- Input Sensitivity / Impedance : 490mV (8W) / 240kΩ
- Harmonic Distortion : 1% (1kHz / 8Ω / 1W)
- S/N Ratio : 105dB
- Frequency Response : 20Hz ~ 20kHz (+0.3, -1.5dB), 10Hz ~ 30kHz (+0.3, -3.0dB)
- Power Consumption : 190W
- Dimensions : 460 (W) x 237 (H) x 340 (D) mm
- Weight : 29.0kg

300B single circuit configuration

The MQ-300 is a stereo power amplifier with a single configuration 8W+8W output. The highly reliable TA-300B (manufactured by Takatsuki Electric Industry Co.,Ltd.) is used as the output tube that is made in Japan.

The driver section features TungSol 6SN7GTB tubes in two-stage parallel configuration and single power stage TA-300B direct heated triode output tubes without feedback.

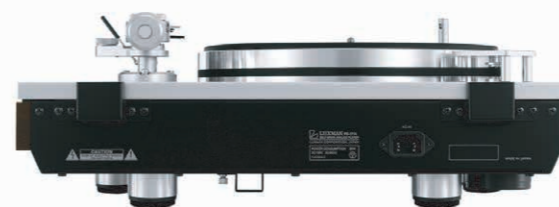
This results in a natural and attractive tonal quality with rich musicality that is characteristic of the TA-300B. The output stage is cathode biased, which is resistant to changes due to heat or voltage fluctuation.

The DC ignition method is used for cathode heating, suppressing hum generation in both the 6SN7GTB and the TA-300B tubes ensuring sound quality and durability.



TA-300B

PD-171A Belt Drive Analog Turntable



Since the highly admired introduction of the PD-171 into the market in 2011, LUXMAN turntables have been renowned for delivering a sense of atmosphere that can only be achieved through the medium of vinyl, something every vinyl enthusiast strives for.

The PD-171A now has a highly rigid main chassis and heavy base ensuring stable rotation. A high torque synchronous AC motor drives a high inertia platter via a synthetic belt for smooth, seamless playback. The precision-machined spindle rests on a wide Teflon bearing to ensure frictionless rotation. The PD-171A's statically balanced custom LUXMAN tonearm glides smoothly on ball bearings for stable and reliable sound. The universal head shell allows easy cartridge replacement, and a detachable stylus light unobtrusively enhances visibility in a mood-lit room.

PD-171AL Belt Drive Analog Turntable



As a tone arm-less audio component, the PD-171AL is an analog player that users may personalize according to their own choice of tone arm, with a selection of arm base options, allowing a deeper appreciation of analog reproduction.

SPECIFICATIONS:

- Turntable
 - Drive System : Belt drive system
 - Motor : Reaction and AC synchronous motor
 - Motor Power Supply : Quartz oscillation amplifier
 - Rotation : 33 1/3 rpm, 45 rpm (2 speeds selectable)
 - Wow and Flutter : 0.04% or less (W.R.M.S.)
 - Weight : 5.0kg (Platter)
- Body
 - Power Consumption : 38W
 - Dimensions : 492 (W) x 140 (up to top face of platter) • 195 (with dust cover mounted) (H) x 407 (D) mm
 - Weight : 23.8kg without arm, 25.4kg with arm

Arm Base



OPPD-AB1
OPPD-AB1 For SME3009R/3010R and other 9inch, 10inch tonearms



OPPD-AB4
OPPD-AB4 For SAEC WE-407/23



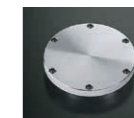
OPPD-AB2
OPPD-AB2 For FR64/64S/64FX IKEDA IT-345



OPPD-AB5
OPPD-AB5 For ORTOFON AS-212S/RS-212D



OPPD-AB3
OPPD-AB3 For SAEC WE-308



OPPD-AB6
OPPD-AB6 DIY universal tonearm board

SUPER AUDIO CD PLAYER

D-05u Super Audio CD Player



The D-05u is the standard model with the built in USB-DAC which uses trickle-down technology from the flagship model D-08u and the mid-range model D-06u.

LUXMAN's proprietary LxDTM drive mechanism and rigid construction assures the best possible performance. It is an original design, first used in the D-08, which combines superior rigidity with outstanding accuracy.

Two Texas Instruments PCM1795 32-bit DAC chips are configured to ensure a fully balanced output section. The USB input accepts up to 192kHz/32bit PCM, and DSD 5.64MHz.

SPECIFICATIONS:

- Supported Media : 2 channel SACD, CD
- Analog Output : Unbalanced x 1, Balanced x 1
- Supported Sampling Frequencies : USB input (PCM) 32kHz, 44.1kHz, 48kHz, 88.2kHz, 96kHz, 176.4kHz, 192kHz (16, 24, 32bit) USB input (DSD) 2.82MHz, 5.64MHz (1bit) COAX / OPT input : 32kHz, 44.1kHz, 48kHz, 88.2kHz, 96kHz, 176.4kHz, 192kHz (16, 20, 24bit)
- Digital Input : USB x 1, Coaxial x 1, Optical x 1
- Digital Output : Coaxial x 1, Optical x 1
- Output Voltage / Impedance : Unbalanced 2.4V / 300Ω, Balanced 2.4V / 600Ω
- Frequency Response : CD 5Hz ~ 20kHz (-0.5dB), SACD 5Hz ~ 50kHz (-3.0dB), USB 5Hz ~ 50kHz (-3.0dB)
- Total Harmonic Distortion : 0.0015% (CD), 0.0015% (SACD), 0.0009% (USB)
- S/N Ratio : 122dB (CD), 102dB (SACD), 123dB (USB)
- Power Consumption : 26W, 1W (standby)
- Dimensions : 440 (W) x 133 (H) x 410 (D) mm
- Weight : 14.8kg

D-06u Super Audio CD Player



The LUXMAN D-06u SACD player uses PCM1792A chips working in dual mono configuration. It supports playback of both PCM and DSD files. The USB input's maximum signal quality handling for PCM files is 384kHz/32-bit and for DSD it is 5.64 MHz. The optical and coaxial inputs can accommodate up to 192 kHz/24-bit input signals. For computer based digital playback, LUXMAN has developed their own software player for PC and Mac which also supports AIFF and Apple Lossless formats.

SPECIFICATIONS:

- Supported Media : 2 channel SACD, CD
- Analog Output : Unbalanced x 1, Balanced x 1
- Supported Sampling Frequencies : USB input (PCM) 32kHz, 44.1kHz, 48kHz, 88.2kHz, 96kHz, 176.4kHz, 192kHz, 352.8kHz, 384kHz (16, 24, 32bit) USB input (DSD) 2.82MHz, 5.64MHz (1bit) COAX / OPT input 32kHz, 44.1kHz, 48kHz, 88.2kHz, 96kHz, 176.4kHz, 192kHz (16, 20, 24bit)
- Digital Input : USB x 1, Coaxial x 1, Optical x 1
- Digital Output : Coaxial x 1, Optical x 1
- Output Voltage / Impedance : Unbalanced 2.5V / 300Ω, Balanced 2.5V / 600Ω
- Frequency Response : CD 5Hz ~ 20kHz (-0.5dB), SACD 5Hz ~ 50kHz (-3.0dB), USB 5Hz ~ 50kHz (-3.0dB)
- Total Harmonic Distortion : 0.0015% (CD), 0.0011% (SACD), 0.0009% (USB)
- S/N Ratio : 122dB (CD), 104dB (SACD), 123dB (USB)
- Power Consumption : 29W, 1W (standby)
- Dimensions : 440 (W) x 133 (H) x 410 (D) mm
- Weight : 15.7kg

SUPER AUDIO CD PLAYER

D-08u Super Audio CD Player



The D-08u is the upgraded version of the D-08, which was released in 2008. The flagship CD/SACD player has had both of the digital and analog circuits renewed for even higher performance. The new version also features a USB connection, ready for Mac and PC streaming at high quality.

The D-08u is equipped with the LxDTM, our original and overwhelmingly sturdy disc drive mechanism, with a supportive, stable rotation. This is combined with the highest quality digital circuitry and 32-bit signal processing, making this player perfect for the digital era.

This high-quality digital aspect is coupled with version 4.0 ODNF, which is the core of LUXMAN's amplifier circuit technology ensuring a final high-quality analog output. With attention to mechanism, digital circuitry and analog circuitry, all bases have been covered to ensure a flagship CD player we are truly proud of.

The D-08u's disk tray is an aluminium die-cast tray loader with an extremely quiet ceiling shutter mechanism which excludes dust.

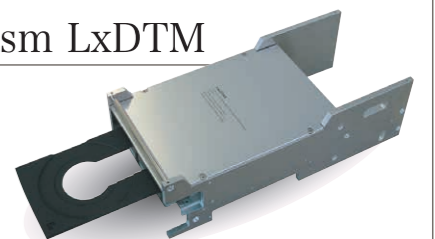
SPECIFICATIONS:

- Supported Media : 2 channel SACD, CD
- Analog Output : Unbalanced x 1, Balanced x 1
- Supported Sampling Frequencies : USB input (PCM) 32kHz, 44.1kHz, 48kHz, 88.2kHz, 96kHz, 176.4kHz, 192kHz, 352.8kHz, 384kHz (16, 24, 32bit) USB input (DSD) 2.82MHz, 5.64MHz (1bit) COAX / OPT input 32kHz, 44.1kHz, 48kHz, 88.2kHz, 96kHz, 176.4kHz, 192kHz (16, 20, 24bit)
- Digital Input : USB x 1, Coaxial x 1, Optical x 2
- Digital Output : Coaxial x 1, Optical x 1
- Output Voltage / Impedance : Unbalanced 2.5V / 300Ω, Balanced 2.5V / 600Ω
- Frequency Response : CD 5Hz ~ 20kHz (-0.5dB), SACD 5Hz ~ 50kHz (-3.0dB), USB 2Hz ~ 50kHz (-3.0dB)
- Total Harmonic Distortion : 0.0015% (CD), 0.0011% (SACD), 0.0009% (USB)
- S/N Ratio : 123dB (CD), 106dB (SACD), 123dB (USB)
- Power Consumption : 38W, 1W (idle)
- Dimensions : 440 (W) x 154 (H) x 413 (D) mm
- Weight : 22.5kg

LUXMAN Original Disc Transport Mechanism LxDTM

The LUXMAN SACD players are equipped with the LUXMAN Original Disc Transport Mechanism, the LxDTM, allowing digital data to be read at a high level of precision. The left-of-unit location of the mechanical system has been adopted after careful consideration of the voluminous analog circuitry, ideal and smooth signal flow, oscillatory concerns and weight balance.

What is more, the box structure uses a strong chassis to solidly enclose the whole mechanism and effectively cut out external vibration.



*Windows is a registered trademark or a trademark of Microsoft Corporation in the United States and/or other countries.
 *Mac is a registered trademark or a trademark of Apple Inc. in the U.S. and other countries.
 *DSD is a registered trademark.
 *The described company names and product names are trademarks or registered trademarks of each company.

DA-150 USB D/A Converter with headphone amp



Desktop usability and high sound quality coexist perfectly in the design of the DA-150. It features a USB input, handling up to PCM 192kHz / 32bit and DSD 5.64MHz signals, a headphone output with improved power output and LUXMAN's LECUA computerized attenuator as standard.

SPECIFICATIONS:

- Format : 2 channel D/A converter
- Supported Sampling Frequencies : USB input (PCM) 32kHz, 44.1kHz, 48kHz, 88.2kHz, 96kHz, 176.4kHz, 192kHz (16, 24, 32bit), USB input (DSD) 2.82MHz, 5.64MHz (1bit), COAX / OPT input 32kHz, 44.1kHz, 48kHz, 88.2kHz, 96kHz, 176.4kHz, 192kHz (16, 20, 24bit)
- Digital Input : USB x 1, Coaxial x 1, Optical x 1
- Analog Output : Unbalanced x 1 (Fixed output level), Headphone x 1
- Headphone Output : 130mW+130mW (600Ω), 400mW+400mW (32Ω), 200mW+200mW (16Ω)
- Total Harmonic Distortion : 0.0012%
- S/N Ratio : 120dB
- Frequency Response : 2Hz ~ 50kHz (+0, -3.0dB)
- Power Consumption : 16W
- Dimensions : 182 (W) x 73 (H) x 277 (D) mm
- Weight : 3.3kg

DA-250 USB D/A Converter with headphone amp



The DA-250 supports up to 192kHz/32bit PCM and 5.64MHz DSD, features a headphone amplifier section with significantly improved output power, includes the LUXMAN's LECUA computerized attenuator and has the addition of a stylish remote control unit. Thus, it can serve as a digital control center on the desktop and anywhere.

SPECIFICATIONS:

- Format : 2 channel D/A converter
- Supported Sampling Frequencies : USB input (PCM) 32kHz, 44.1kHz, 48kHz, 88.2kHz, 96kHz, 176.4kHz, 192kHz (16, 24, 32bit), USB input (DSD) 2.82kHz, 5.64kHz (1bit), COAX / OPT input 32kHz, 44.1kHz, 48kHz, 88.2kHz, 96kHz, 176.4kHz, 192kHz (16, 20, 24bit)
- Digital Input : USB x 1, Coaxial x 1, Optical x 2
- Digital Output : Coaxial x 1, Optical x 1
- Analog Input : Unbalanced x 1
- Analog Output : Unbalanced x 1, Balanced x 1, Headphone x 1
- Headphone Output : 130mW+130mW (600Ω), 400mW+400mW (32Ω), 200mW+200mW (16Ω)
- Total Harmonic Distortion : 0.001%
- S/N Ratio : 118dB
- Frequency Response : 2Hz ~ 50kHz (+0, -3.0dB)
- Power Consumption : 20W
- Dimensions : 364 (W) x 81 (H) x 279 (D) mm
- Weight : 5.4kg

M-200 Compact Stereo Power Amplifier



The DA-200 and its successor, the DA-250, are great for PC audio and expand the possibilities of a USB D/A converter. A partner which truly brings out the quality of their performance is the M-200 stereo power amplifier. With its matching B4 footprint, this model features a 25 watts-per-channel (8Ω) discrete amplification circuit, balanced inputs and BTL (monaural) mode for driving a single more powerful speaker. The M-200 corresponds with modern listening tastes as part of a compact and high quality music playback system.

SPECIFICATIONS:

- Rated Output: (Normal) - 25W + 25W (8Ω) (BTL) - 70W (8Ω)
- Total Harmonic Distortion: 0.005% (8Ω, 1 kHz, Both CH, simultaneous drive) 0.06% (8Ω, 20Hz ~ 20kHz, Both CH simultaneous drive (-3dB))
- Amplification: Stereo - 23dB, BTL - 29dB
- S / N Ratio: Line - 107dB or over, Balance Line - 102dB or over
- Frequency Response: 20Hz ~ 20,000Hz (-0.2dB)
- Damping factor: 100
- Power Consumption: 85W, 32W (No input)
- Dimensions (W x H x D): 364 x 81 x 297(mm)
- Weight: 7.0kg

USB D/A CONVERTER

DA-06 USB D/A Converter



DSD
Direct Stream Digital

The DA-06 D/A converter is a high end product combining a large scale analog output circuit with a USB digital input capable of handling up to 384kHz/32-bit PCM data and 5.64MHz DSD data.

The front panel incorporates an LED display showing data sampling frequencies and playback bit rate.

The DA-06 also utilizes synchronous DSP transmission and an internal DAIR (Digital Audio Interface Receiver), reducing jitter by synchronous processing of the S/PDIF input.

SPECIFICATIONS:

- Format : 2 channel D/A converter
- Supported Sampling Frequencies : USB input (PCM) 32kHz, 44.1kHz, 48kHz, 88.2kHz, 96kHz, 176.4kHz, 192kHz, 352.8kHz, 384kHz (16, 24, 32bit), USB input (DSD) 2.82kHz, 5.64kHz (1bit), COAX / OPT / AES / EBU input 32kHz, 44.1kHz, 48kHz, 88.2kHz, 96kHz, 176.4kHz, 192kHz (16, 20, 24bit)
- Digital Input : USB x 1, Coaxial x 2, Optical x 2, Balanced (AES / EBU) x 1
- Digital Output : Coaxial x 1, Optical x 1
- Analog Output : Unbalanced x 1, Balanced x 1
- Total Harmonic Distortion : 0.0005% (unbalanced), 0.0005% (balanced)
- S/N Ratio : 124dB
- Frequency Response : 2Hz ~ 55kHz (+0, -3.0dB)
- Power Consumption : 17W
- Dimensions : 440 (W) x 92 (H) x 400 (D) mm

LUXMAN original music playback software

LUXMAN has developed an original music playback software system, LUXMAN Audio Player. It is a bespoke music software player providing high quality audio playback over USB on both Windows PC and Mac. This software can handle the regular formats used by major distribution sites such as FLAC, ALAC, WAV, AIFF, MP3, and DFS/DSDIFF.



LUXMAN Audio Player

HEADPHONE AMPLIFIER

P-750u Headphone Amplifier

NEW



LUXMAN applied the latest ODNF4.0 system to eliminate distortion on all four channels.

Design specifications have been selected to bring out the benefits of the BTL connection for balanced outputs.

For the unbalanced outputs, the output current capacity is doubled by pairing the four amplifier channel circuits into left and right and driving them in parallel.

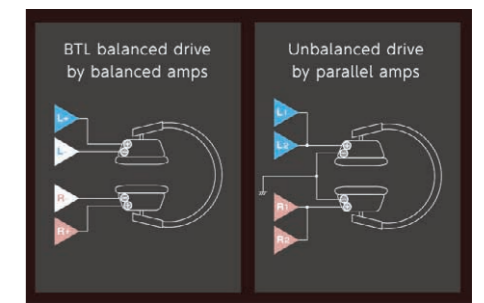
The P-750u has a 4-pin XLR balanced connection, which is becoming standard for high-end headphones. The chassis feet are made of cast iron to block unnecessary external vibration. LUXMAN's electrically controlled ultimate attenuator, LECUA, enables smooth adjustment of the volume control with minimal deterioration in sound quality.

SPECIFICATIONS:

- Rated Output : Unbalanced 4W+4W (8Ω) / 1W+1W (32Ω), Balanced 8W+8W (16Ω), 4W+4W (32Ω)
- Input Sensitivity / Impedance : Unbalanced 1.0V / 15kΩ, Balanced 2.0V / 40kΩ
- Total Harmonic Distortion : Unbalanced 0.003% (1kHz), Balanced 0.002% (1kHz)
- Frequency Response : 20Hz ~ 20kHz (+0, -0.1dB), 10Hz ~ 170kHz (+0, -3.0dB)
- S/N Ratio : Unbalanced 113dB or more, Balanced 116dB or more
- Power Consumption : 40W, 27W (no signal)
- Dimensions : 440 (W) x 92 (H) x 400 (D) mm
- Weight : 13.3kg

BTL balanced drive and paralleled unbalanced drive

The P-750u is equipped with ODNF Version 4.0, the latest generation of LUXMAN's original high sound quality amplification feedback circuit on each of the four identical output channels. Utilizing a BTL balanced output configuration enables a great improvement in left-right separation, sound localisation and power supply regulation, whilst cross-modulation distortion is also significantly reduced. The listener can enjoy the maximum benefits of balanced connection headphones. When using unbalanced headphones, the four channel amplification circuitry is divided into 2 channels each for left and right, driving each in parallel, thereby doubling the output current supply capacity. This improves absolute driving force and intensifies sound reproduction with dynamic intonation. An enhanced sound stage can be enjoyed with a rich range and the superb detail that is characteristic of a balanced connection whilst maximising the performance of the headphones.



PHONO AMPLIFIER

E-250 Phono Amplifier



The E-250 allows the listener to adjust the fine settings for every performance, releasing the expression engraved in the grooves of vinyl discs and creating a hitherto unknown musical impression.

The rear panel is equipped with a load impedance selector (34/47/56/100kΩ) and a load capacity selector (0/100/220/320 pF) to match the characteristics of the cartridge and exploiting it to its full potential.

The E-250 features a step up transformer with a 2 stage gain selection function in which a L/R independent super permalloy core is used, thereby supporting even low impedance MC cartridges. This creates a rich and expressive musicality that is a unique characteristic of the transformer.

SPECIFICATIONS:

- Circuiting System : Negative-feedback type equalizer (RIAA)
- Input Sensitivity / Impedance : MM 3.2mV / 34kΩ, 47kΩ, 56kΩ, 100kΩ (switchable), MC-H 0.37nV / 40Ω, MC-L 0.12mV / 2.5Ω
- Gain : MM 38dB, MC-H 57dB, MC-L 66dB
- Output Voltage / Impedance : 250mV / 300Ω
- S/N Ratio : MM90dB, MC-H 83dB, MC-L 80dB
- Power Consumption : 7W
- Dimensions : 364 (W) x 81 (H) x 274 (D) mm
- Weight : 4.3kg

EQ-500 Vacuum Tube Phono Amplifier



The EQ-500 is equipped with the circuit technology and musical essence inherent to its predecessor, the E-06 from LUXMAN. First launched in the 1980's, the E-06 is still a highly respected masterpiece of the CR type. This renowned circuit technology has been newly improved in the EQ-500 and uses vacuum tubes for all of the amplifier elements to bring the spirit of analog sound inscribed on the vinyl discs into life.

SPECIFICATIONS:

- Circuiting System : SRPP, final stage cathode follower, non-feedback CR type equalizer (RIAA)
- Input Sensitivity / Impedance : MM 4mV / 30kΩ ~ 100kΩ (variable) MC-H 0.44mV / 40Ω MC-L 0.18mV / 2.5Ω
- Gain : MM 36dB, MC-H 55dB, MC-L 63dB
- Output Voltage / Impedance : 250mV / 850Ω
- S/N Ratio : MM 76dB, MC-H 75dB, MC-L 74dB
- Power Consumption : 47W
- Dimensions : 440 (W) x 92 (H) x 397 (D) mm
- Weight : 12.5kg

ACCESSORIES

SYSTEM SELECTOR



AS-44 RCA Line Selector

- 4 way RCA terminal signal switching system
- Dimensions : 370 (W) x 71 (H) x 136 (D) mm
- Weight : 2.4kg



AS-55 Speaker Selector

- 3 way speaker terminal signal switching system
- Dimensions : 370 (W) x 71 (H) x 164 (D) mm
- Weight : 3.0kg



AS-50R Speaker Selector

- 3 way speaker terminal signal switching system
- Dimensions : 297 (W) x 75 (H) x 120 (D) mm
- Weight : 1.8kg

AUDIO CABLE

REFERENCE SERIES



JPR-100

- 1.0m cable with RCA connector
- Oxygen Free Copper (OFC) conductor

JPR-150

- 1.5m cable with RCA connector
- Oxygen Free Copper (OFC) conductor



JPC-100

- 1.0m XLR cable
- Oxygen Free Copper (OFC) conductor

JPC-150

- 1.5m XLR cable



JPS-100

- 50m speaker cable roll
- Oxygen Free Copper (OFC) conductor



JPU-150

- 1.5m USB 2.0 cable
- Oxygen Free Copper (OFC) conductor

ULTIMATE SERIES



JPR-10000

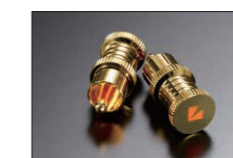
- 1.25m cable with RCA connector
- 6N (99.99997% Copper) high-grade conductor



JPC-10000

- 1.25m XLR cable
- 6N (99.99997% Copper) high-grade conductor

TERMINAL PLUG



JPT-10

- RCA short pin (8 pieces in a box)
- Solid carved brass
- 24K gold plated



JPB-10

- Banana plug (4 pieces in a box)
- Solid carved brass
- 24K gold plated



JPY-10

- Spade plug (4 pieces in a box)
- Solid carved brass
- 24K gold plated