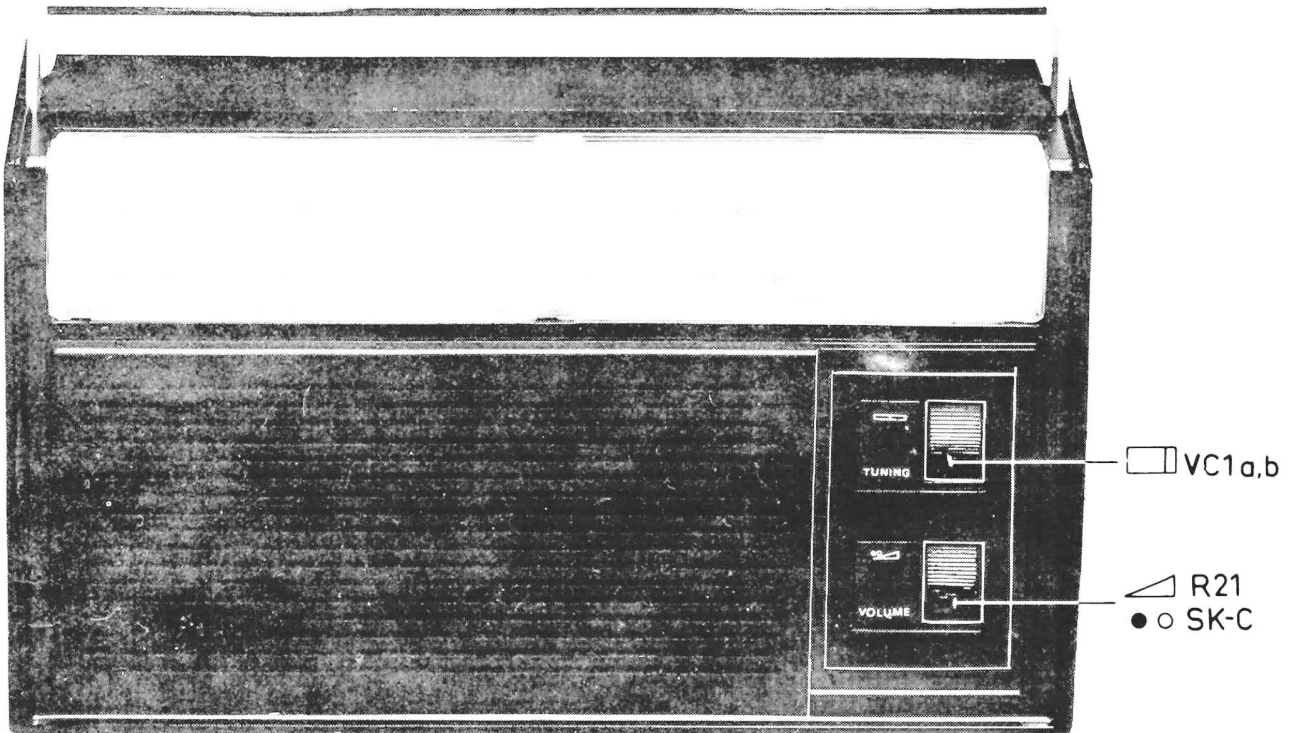


NOTICE TECHNIQUE

Recepteur - radio

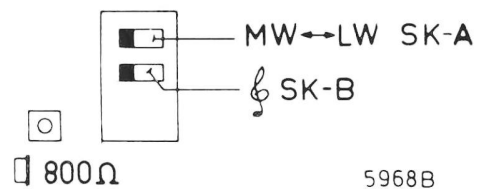
SX1230/29

SR1230 (1112-7A)



ON REAR SIDE

MW: 520-1605 kHz (577-187m)
 LW: 150-255 kHz (2000-1150m)
 IF = 452 kHz
 6V (4x1.5V)

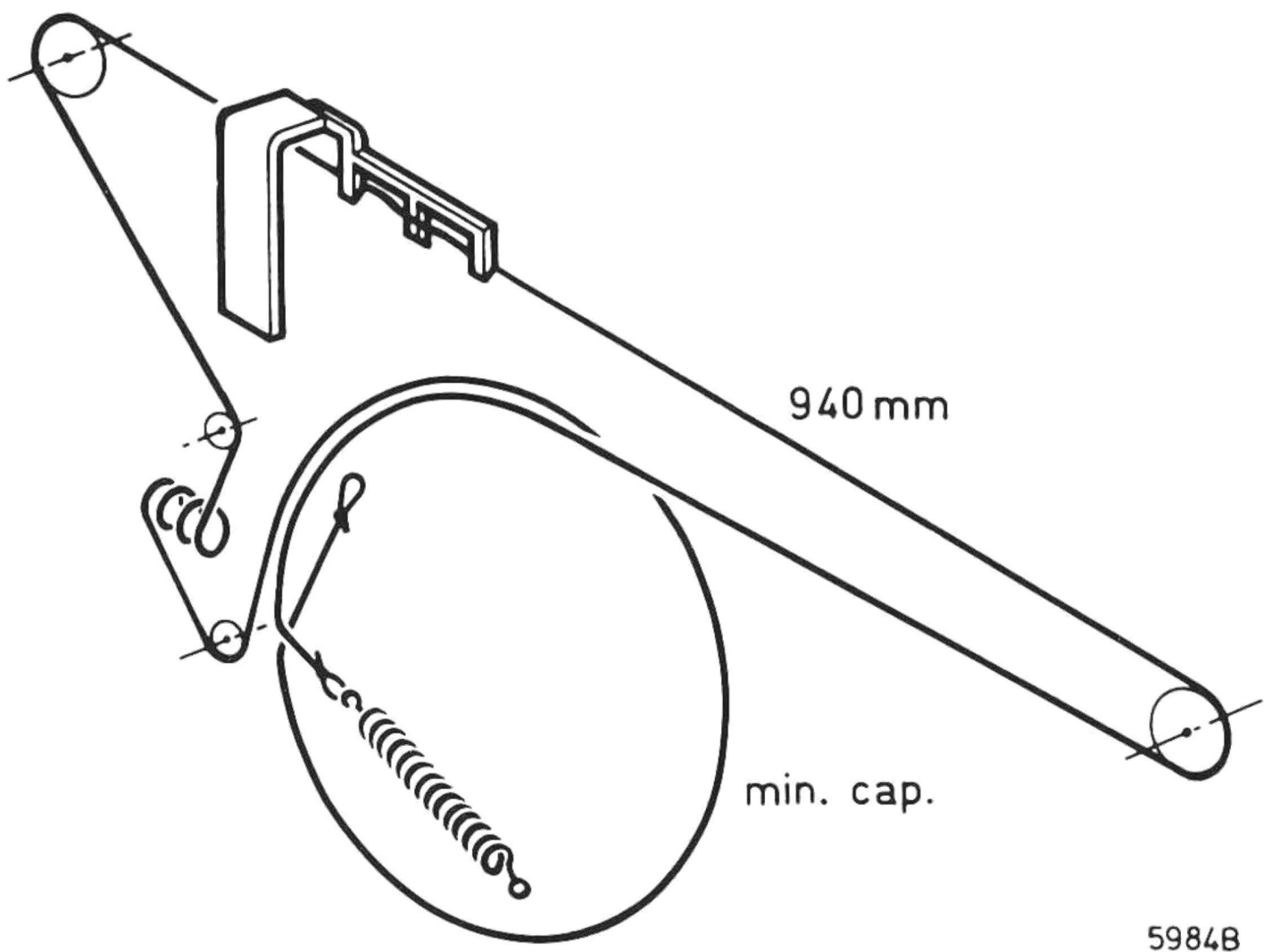


Les normes de sécurité exigent que l'appareil soit remis à l'état d'origine et que soient utilisées les pièces de rechange identiques à celles spécifiées.

SCHNEIDER
 RADIO-
 TELEVISION

BUREAU TECHNIQUE
 12 rue L. Bertrand - 94 Ivry-sur-Seine





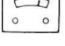



DÖC 101 760 206

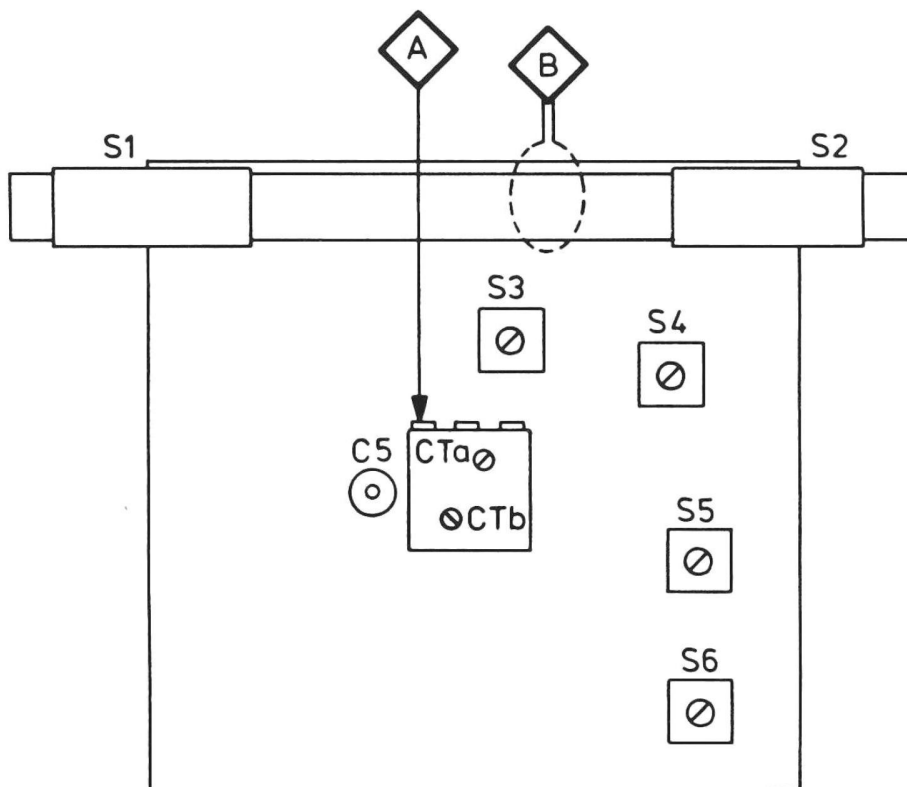


940 mm

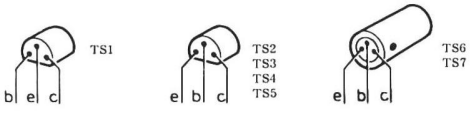
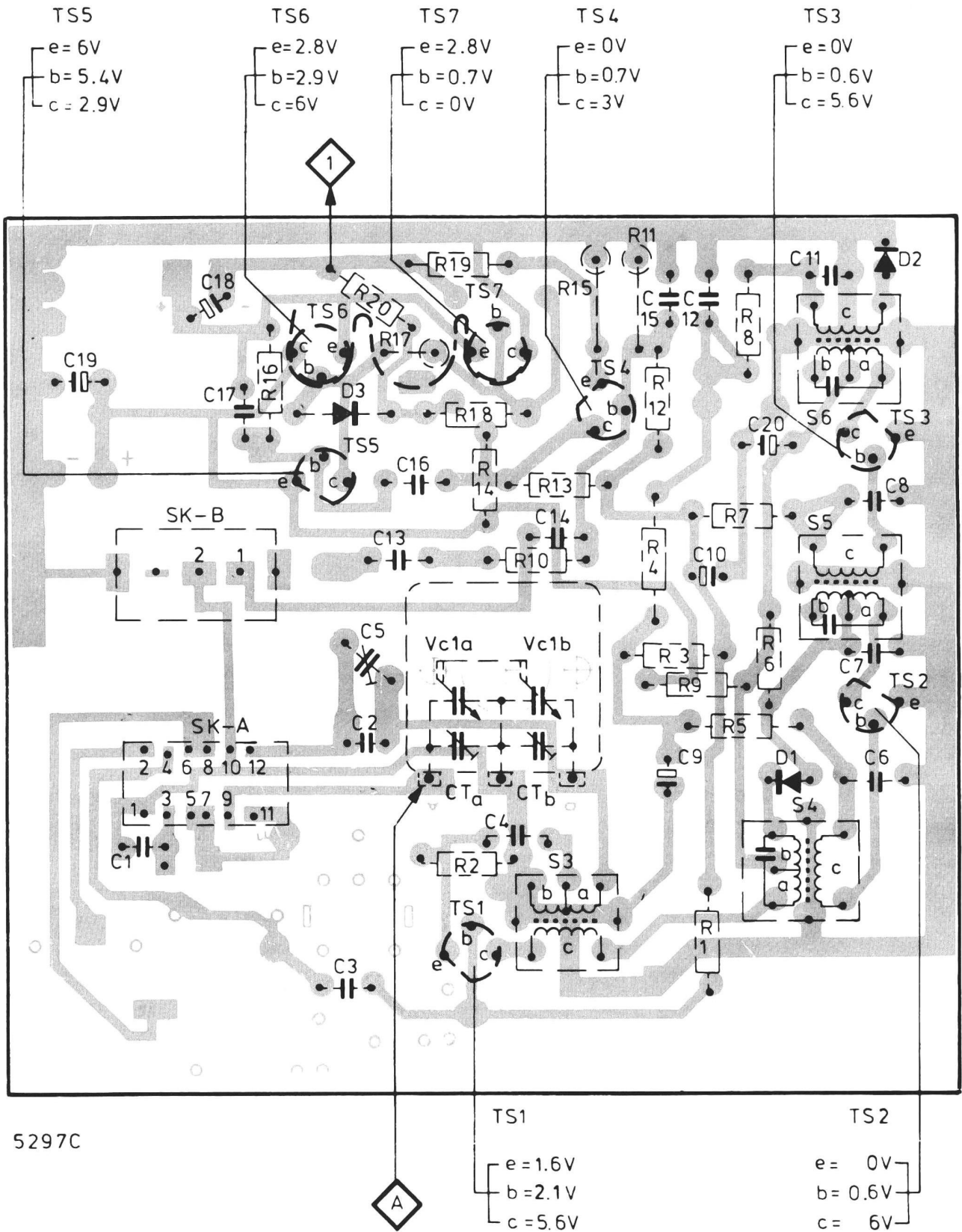
min. cap.

5984B

Wave range SK...	 Signal to	 Tuning	 Detune	 Adjust	 Indication	
MW (520-1605 kHz)	1 via 39 nF	A	Min. Cap.	S4,S5,S6	S4,S5,S6	1 max.
MW (520-1605 kHz)	512 kHz	B	Max. Cap.		S3	1 max.
	1635 kHz		Min. Cap.		CTb	
	600 kHz				S1	
	1400 kHz		Tune in		CTa	
LW (150-255 kHz)	147 kHz	B	Max. Cap.		C5	1 max.
	250 kHz				Tune in	
Repeat - Herhalen - Répéter - Wiederholen - Repitanse 						
1 Align. AM.IF. = 452 kHz						



MISC.	SK-A,B	TS5,6 D3 Vc1a CTa TS1	CTb S3 TS7,4 Vc1b	D1 S4÷6 TS2,3 D2
C	19 1	18 17	3 2 5 13 16 4 14	15 9 10 12 20 11 6÷8
R		16	20 17 19 2 18 14 10 13 15 11 4 12 3 1 5÷9	



MISC	SK-A,B	TS5,6 D3	Vc1a CTa TS1 S1 CTb S3 TS7,4Vc1b	D1 S4-6 TS2,3 D2	S2	SK-C	S7
C	19 1	18 17	3 2 5 13 16 4 14	15 9 10 12 20 11 6-8			
R		16	20 17 19	2 18 14 10 13 15 11 4 12 3 1 5-9			21

