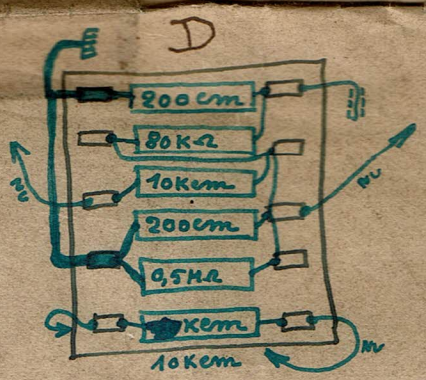
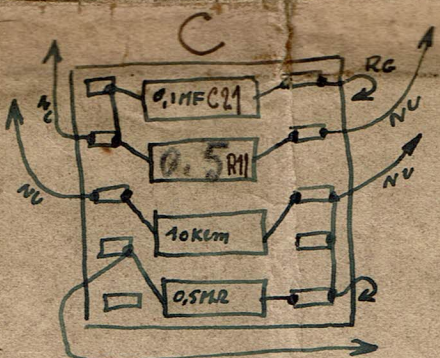
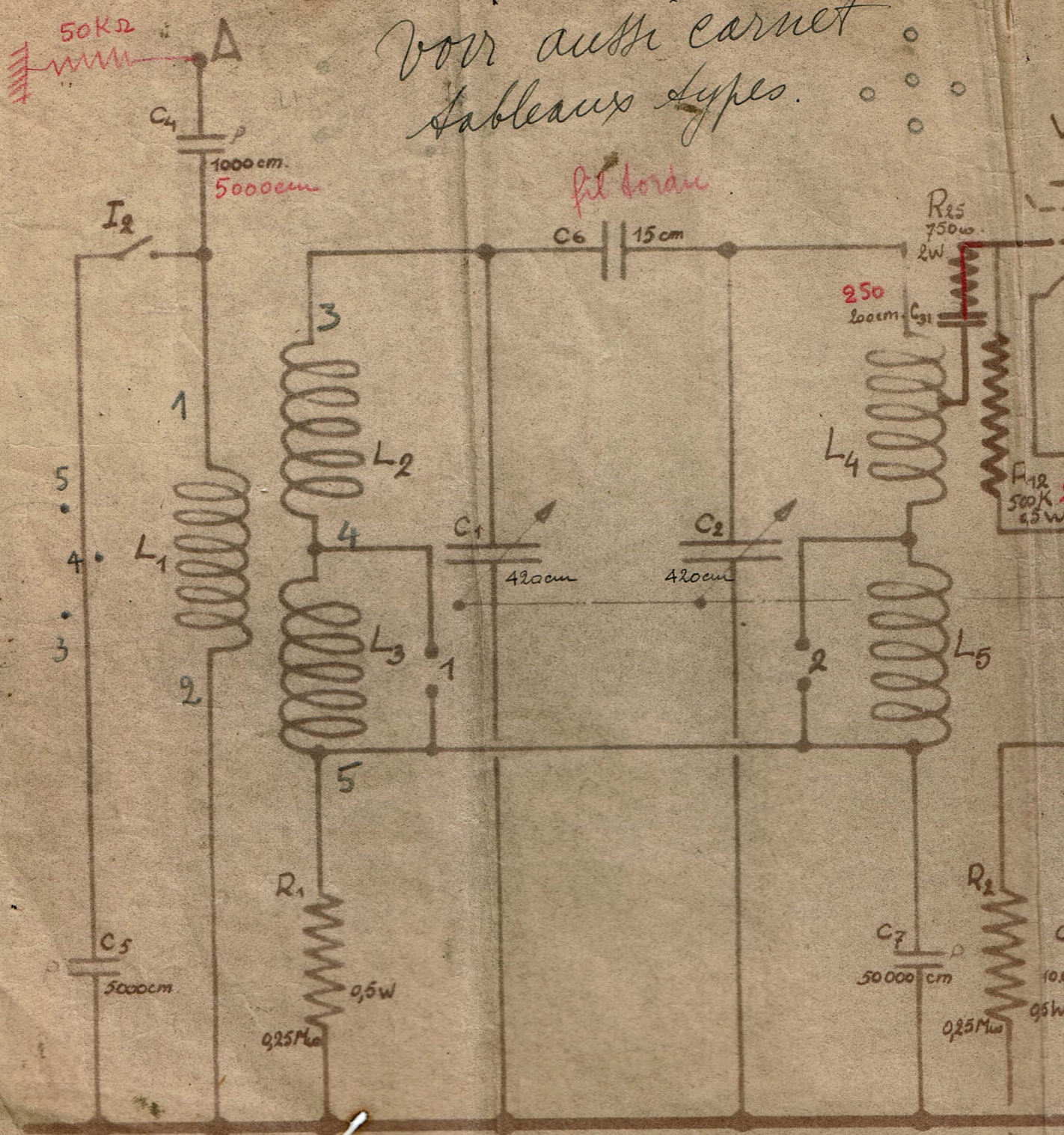


Voir aussi carnet  
tableaux types.



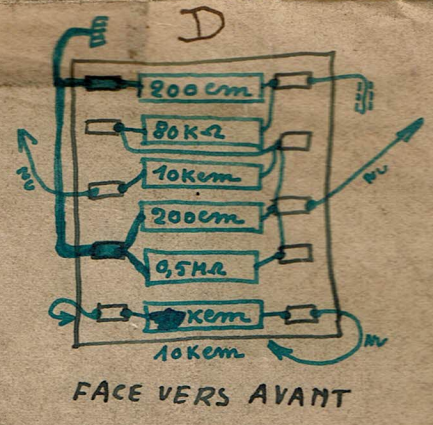
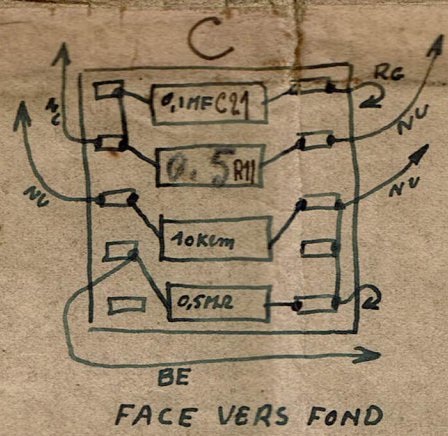


Schéma de principe

super Ondolina

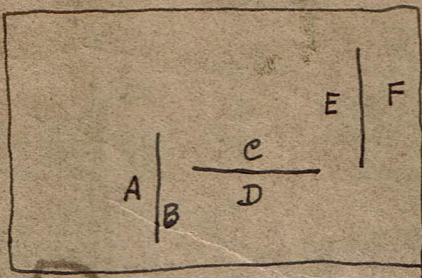
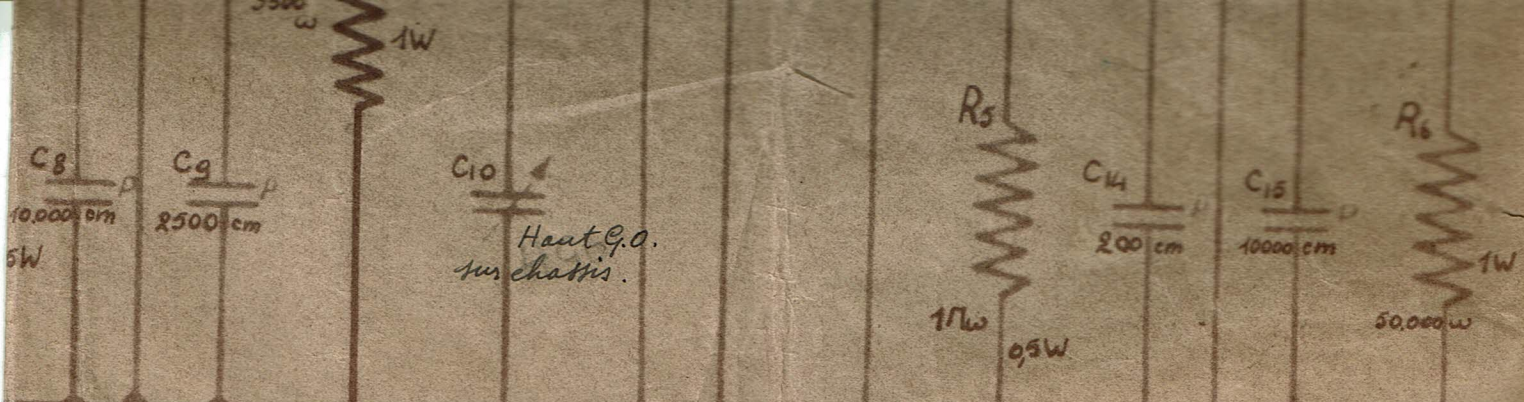
123Kc

combinateur

DO	1	2
GO		6
DU	5	6

213-277





# du Récepteur 535Δ

Lampes + 1 valve

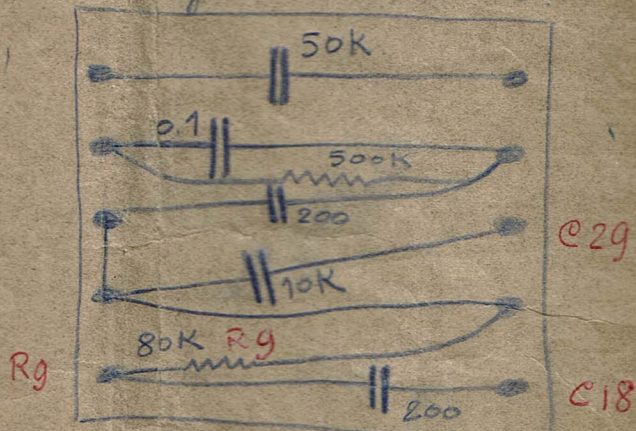
C<sub>1</sub> ~ 110 à 25

il ya des variantes

4 5 Fermés

||

||



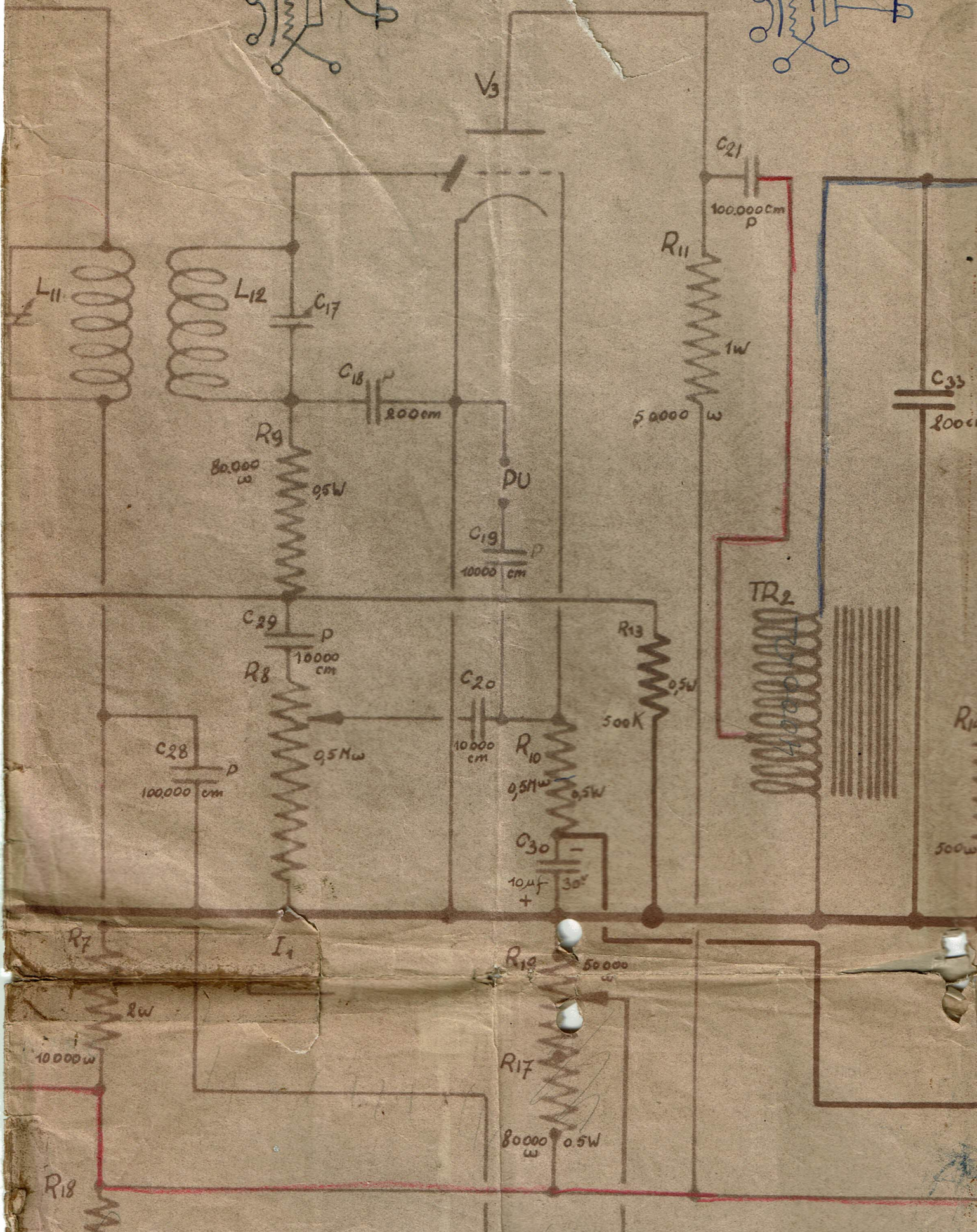
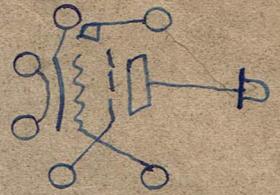
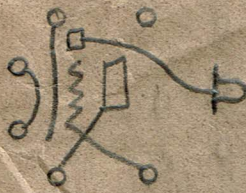
chassis  
Vers face

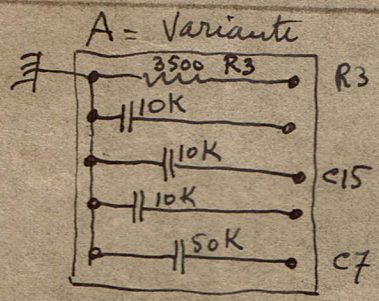
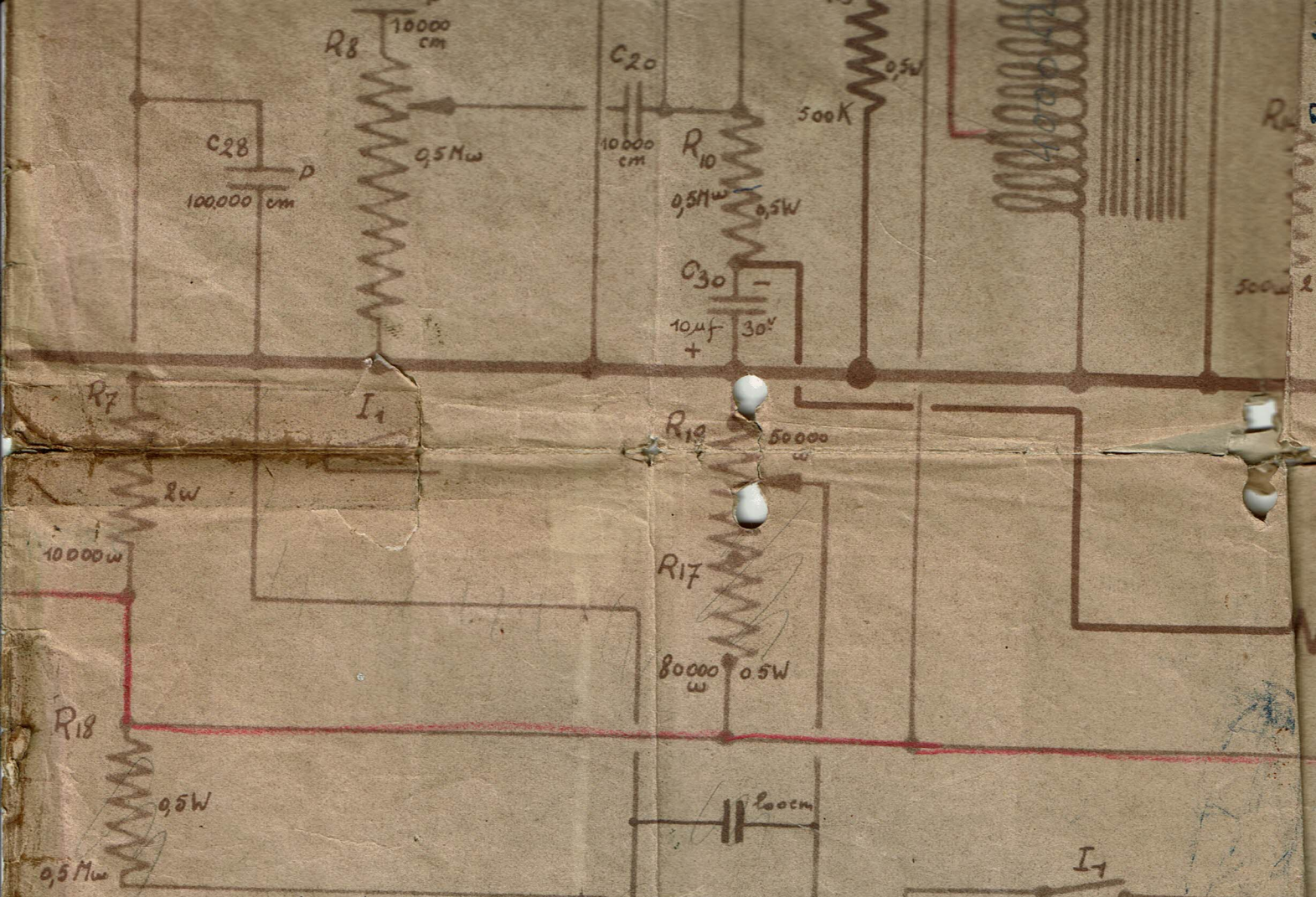


MHSD4

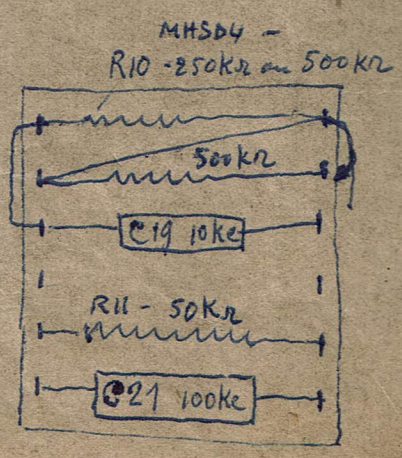
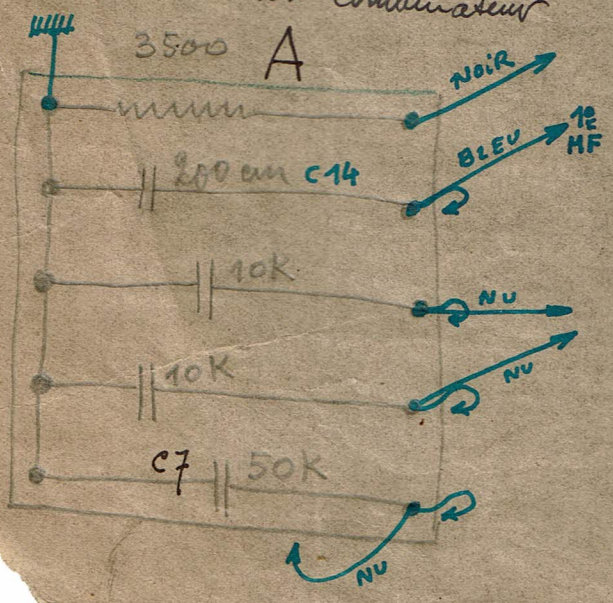
E444

E444



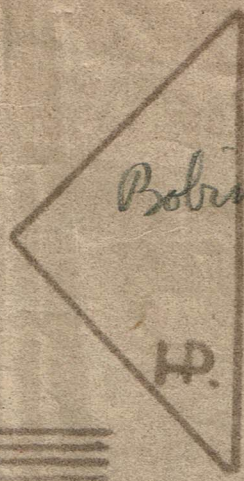
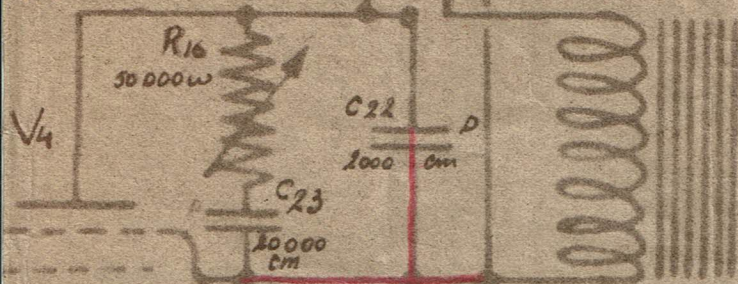


colé vers combinatoire  
3500 A



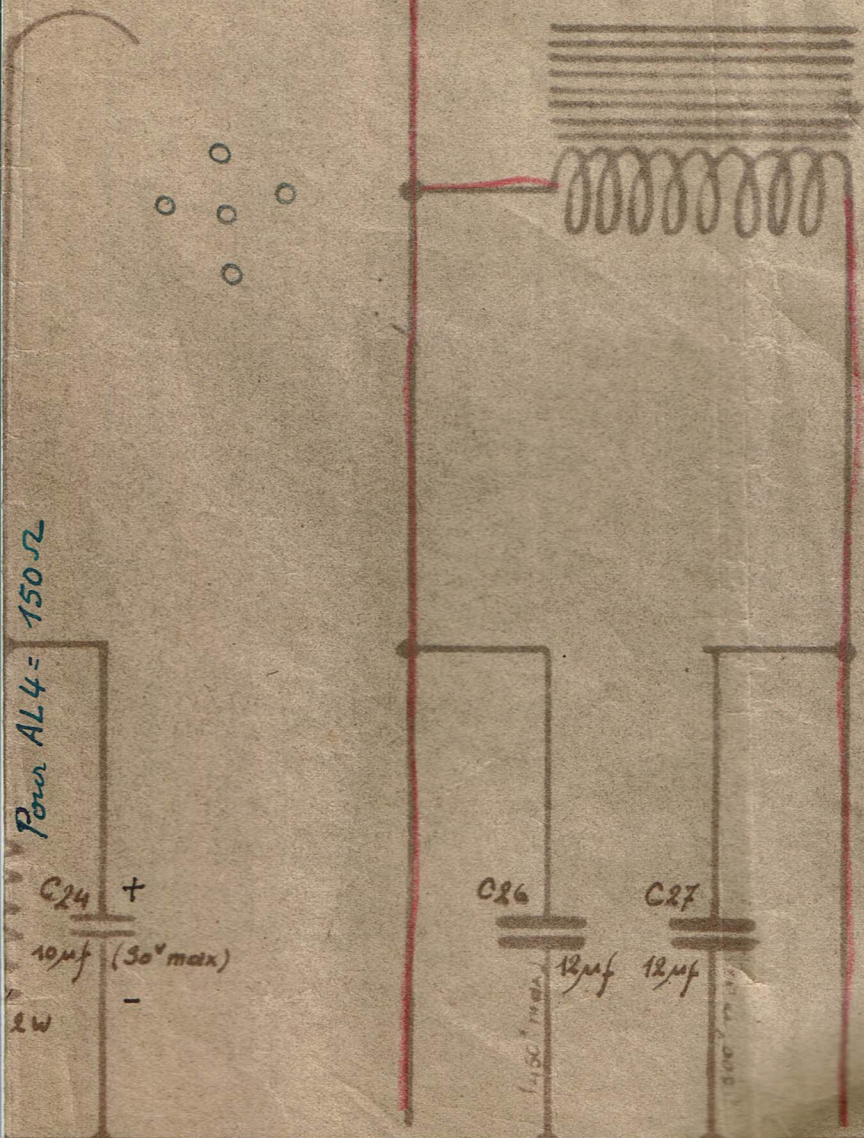
DESSIN  
 VERIFIÉ  
 L'INGEN

RENS 1384  
 E453 on  
 APP 4120



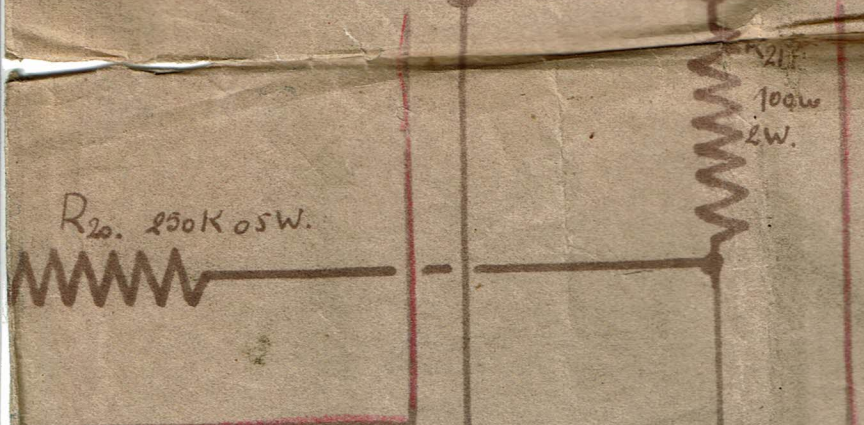
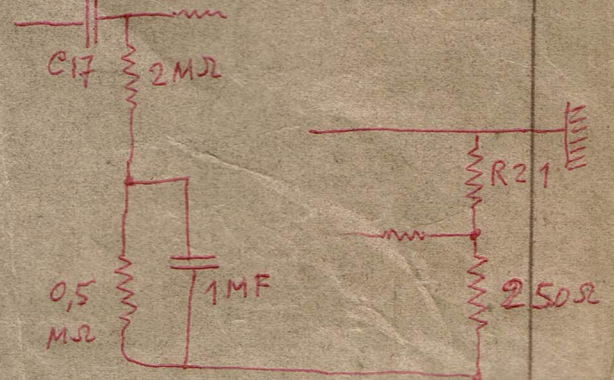
Bobine mobile =  $5 \Omega$

transfo EREA  
 1-3 et 4-6  
 transfo type DT 359  
 (TS 3001)

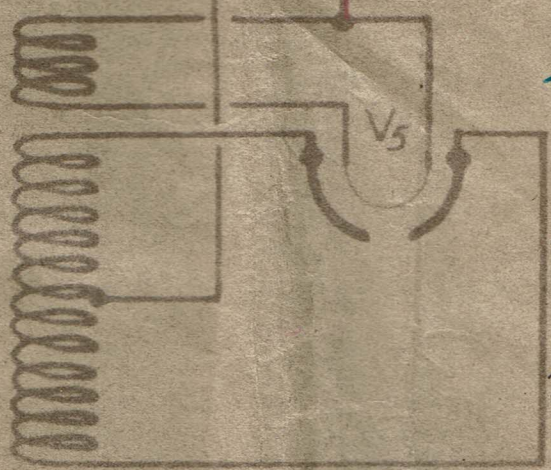
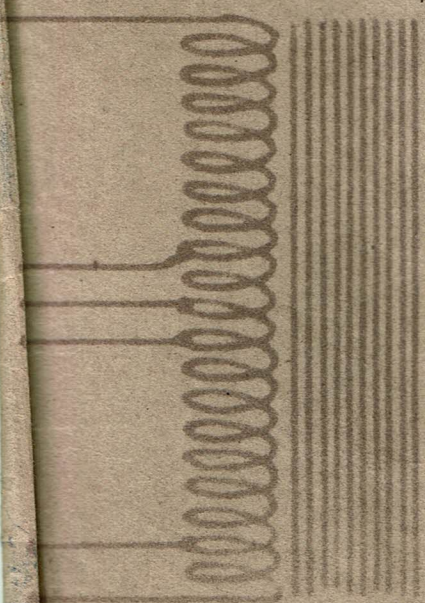
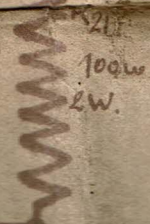
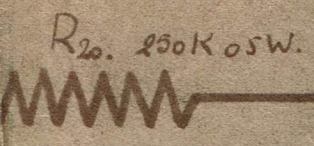
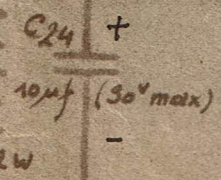
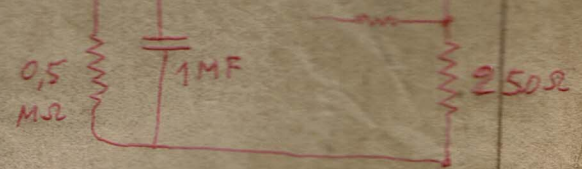


Transformation avec E443H.

Supprimer TR2. -R14 et C24 -C33 -15V.

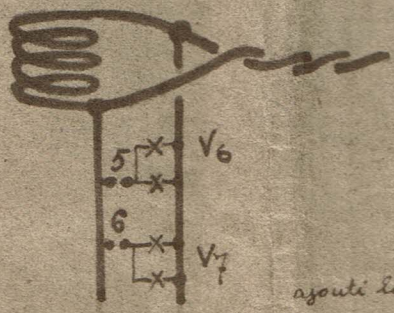
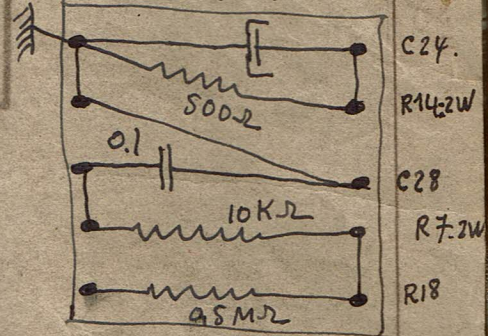


Pour A



1861

F { C30 = 10 MF } se trouvent  
 { R20 = 250 KΩ } derrière  
 { R21 = 100 Ω } cette  
 plaque  
 10 MF



ajouté 600 en sus n° 27-11-34 C. H. P.

DATE LE 27 AOÛT 1934

*C. H. P.*

FILÉ LE :-

REVENIR EN CHIFFRE :-

# 70.865