

FM Stereo/AM Radio

Operating Instructions



FM/AM WALKMAN

SRF-59

Sony Corporation ©2001 Printed in China


<http://www.world.sony.com/>

WARNING

You are cautioned that any changes or modifications not expressly approved in this manual could void your authority to operate this equipment.

Before You Begin

Thank you for choosing the Sony radio! It will give you many hours of reliable service and listening pleasure. Before operating the radio, please read these instructions thoroughly and retain them for future reference.

Precautions

- Operate the unit only on 1.5V DC with one size AA (R6) battery.
- Avoid exposure to temperature extremes, direct sunlight, moisture, sand, dust or mechanical shock. Never leave in a car parked in the sun.
- Should any solid object or liquid fall into the unit, remove the battery and have the unit checked by a qualified personnel before operating it any further.
- In vehicles or buildings, radio reception may be difficult or noisy. Try listening near a window.
- To clean the casing, use a soft cloth dampened with a mild detergent solution.
- This product is not designed to be water-resistant, so you should take care to use the unit when raining, snowing or in a water-splash place.

Notes on Headphones

Road safety

Do not use headphones while driving, cycling, or operating any motorized vehicle. It may create a traffic hazard and is illegal in many areas. It can also be potentially dangerous to play your headphones at high volume while walking, especially at pedestrian crossings. You should exercise extreme caution or discontinue use in potentially hazardous situations.

Preventing hearing damage

Avoid using headphones at high volume.

Hearing experts advise against continuous, loud and extended play. If you experience a ringing in your ears, reduce volume or discontinue use.

Caring for others

Keep the volume at a moderate level. This will allow you to hear outside sounds and to be considerate to people around you.

Warning

If there is lightning when you are using the unit, take off the headphones immediately.

If you have any questions or problems concerning your unit, please consult your nearest Sony dealer.

Specifications

Frequency range

FM: 87.5 - 108 MHz

AM: 530 - 1 710 kHz

Output

(headphones) jack (ø 3.5 mm stereo minijack)

Power output

3.6 mW + 3.6 mW (at 10% harmonic distortion) with headphones having impedance of 32 Ω

Power requirements

1.5 V DC, one size AA (R6) battery

Dimensions

Main unit:

Approx. 65 × 92.9 × 26.5 mm (w/h/d)

(Approx. 2 ⁵/₈ × 3 ³/₄ × 1 ¹/₁₆ inches) incl. projecting parts and controls

When attaching the belt clip to the main unit:

Approx. 65 × 92.9 × 30.5 mm (w/h/d)

(Approx. 2 ⁵/₈ × 3 ³/₄ × 1 ¹/₄ inches) incl. projecting parts and controls

Mass

Approx. 84 g (3 oz) incl. a battery and the belt clip

Accessories supplied

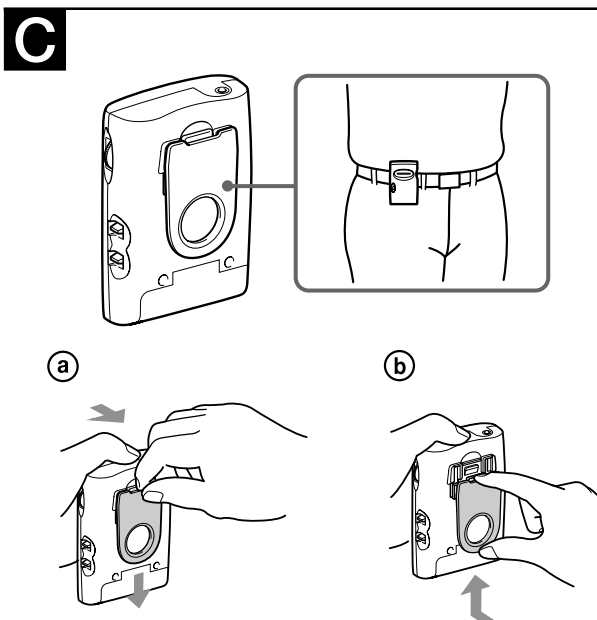
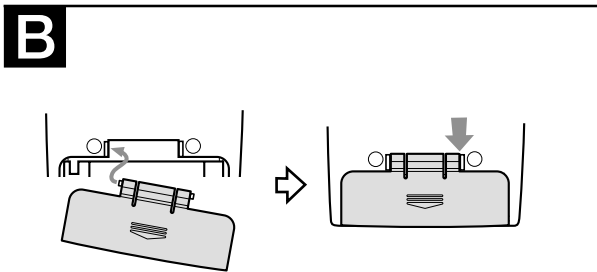
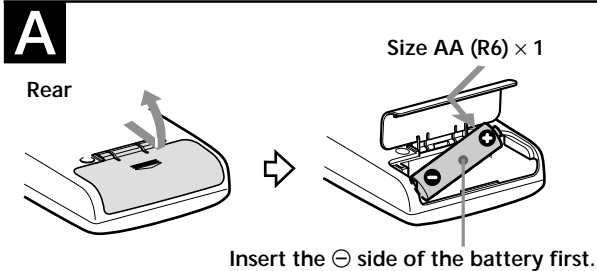
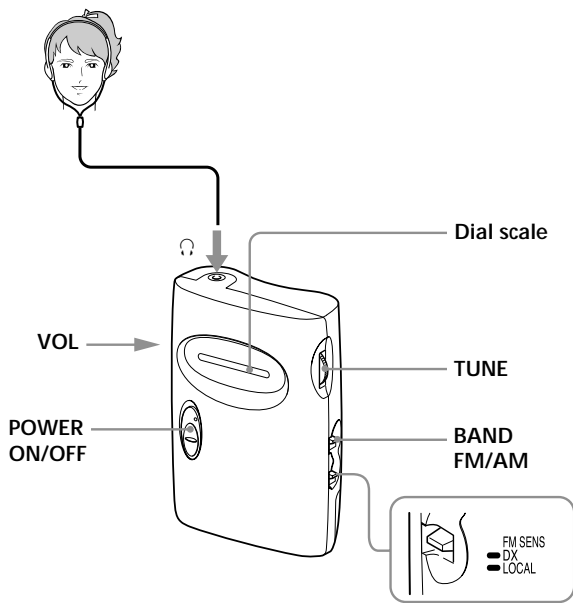
Stereo headphones (1)

Belt clip (1)

Design and specifications are subject to change without notice.

LIMITED WARRANTY
(Portable Audio)

FOB 30\$ 以下



Installing the Battery

(See Fig. **A**)

- 1 Open the battery compartment lid at the rear of the radio.
- 2 Insert one size AA (R6) battery (not supplied) with the ⊕ and ⊖ marks aligned correctly.
- 3 Close the battery compartment lid.

Battery life (approx. hours)	(JEITA*)	
	FM	AM
Using Sony alkaline size AA (LR6) battery	100	140
Using Sony size AA (R6) battery	35	50

* Measured by JEITA (Japan Electronics and Information Technology Industries Association) standards. The actual battery life may vary depending on the circumstance of the unit.

When to replace the battery

Replace the battery when the sound becomes weak or distorted. Remove the old battery and insert a new one.

Notes on battery

- Do not charge the dry battery.
- Do not carry the dry battery with coins or other metallic objects. It can generate heat if the positive and negative terminals of the battery are accidentally contacted by a metallic object.
- When you are not going to use the unit for a long time, remove the battery to avoid damage from battery leakage and corrosion.

To attach the battery compartment lid if it is accidentally detached (see Fig. **B**)

- 1 Put in one side of the lid as illustrated.
- 2 Push the other side to attach.

Playing the Radio

- 1 Connect the supplied stereo headphones to ♯ (headphones) jack.
- 2 Set **POWER** to **ON** to turn on the radio.
- 3 Set **BAND** to select **FM** or **AM**.
- 4 Turn **TUNE** to tune in a station.
- 5 Adjust **VOL** (volume).

- To turn off the radio, set **POWER** to **OFF**.
- To improve reception
 - FM**: Extend the stereo headphones cord which functions as the FM antenna.
 - AM**: Rotate the unit horizontally for optimum reception. A ferrite bar antenna is built in the unit.
- Set **FM SENS** to **LOCAL** if interference is prevalent when radio wave intensity is dramatically stronger. To listen to stereo programs, set to **DX**.

Using the Belt Clip (See Fig. **C**)

Use the belt clip when attaching the unit to your belt.

To detach the belt clip, see fig. **C**-**Ⓐ**.

To attach the belt clip, see fig. **C**-**Ⓑ**.