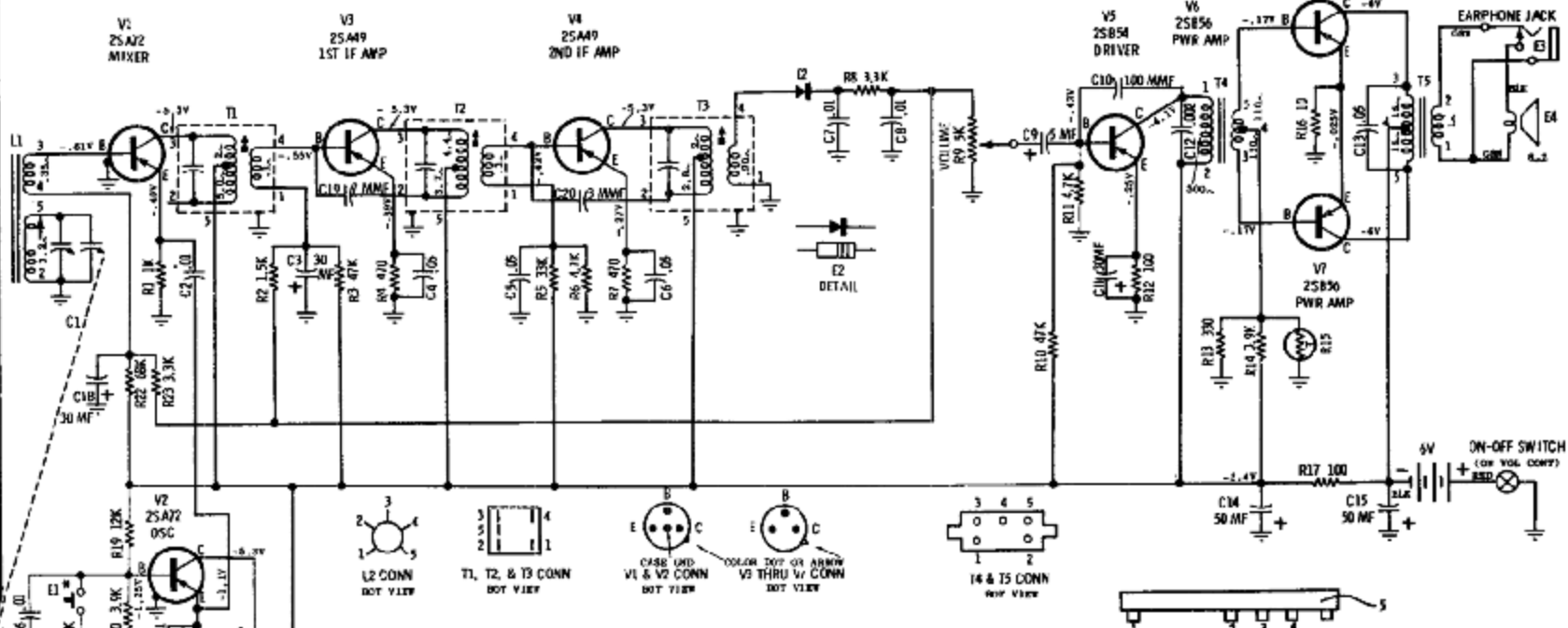


MOTOROLA Model X39, Chassis HS-1007

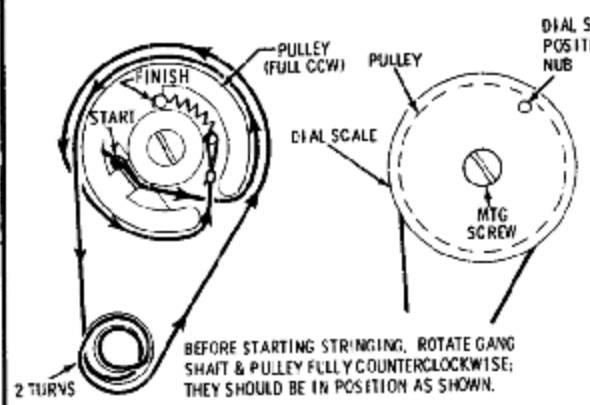


NOTES:
 CAPACITORS-UNLESS OTHERWISE SPECIFIED, DECIMAL VALUES IN MF, ALL OTHERS IN MMF. VOLTAGES-MEASURED FROM POINT INDICATED TO GROUND WITH A VTVM, $\pm 10\%$. NO SIGNAL IN, VOL AT MIN.

* PUSHBUTTON SWITCH (BATTERY LIFE INDICATOR) IS LOCATED ON FRONT OF RADIO - PUSH TO CLOSE ZERO SIGNAL CURRENT - APPROX 10.5 MA (MIN VOL) TUNING RANGE - 532 KC TO 1620 KC IF - 455 KC

MODEL X39 SCHEMATIC DIAGRAM

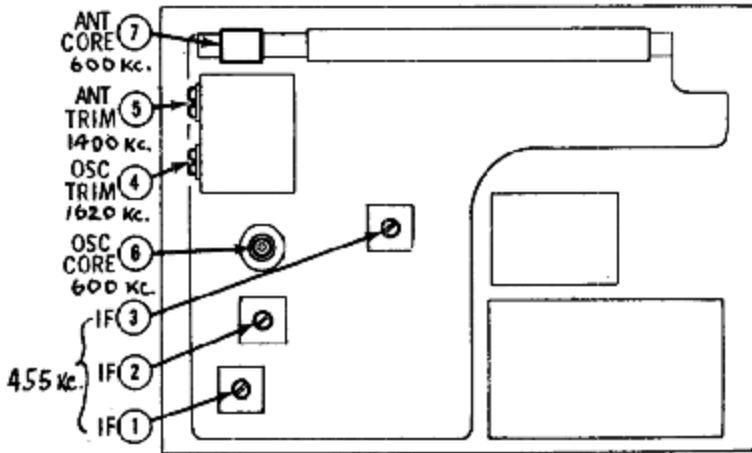
93



MODEL X39 DIAL STRINGING DETAIL

Chassis Removal

1. From rear of cabinet, unscrew the earphone jack mounting nut.
2. Lift up carrying handle and remove two (2) screws from sides of cabinet.
3. Lift out escutcheon and chassis as an assembly from cabinet rear.
4. If it becomes necessary to remove chassis from escutcheon, first: remove the two control knobs and three chassis mounting screws, then unsolder all chassis connecting leads (to speaker, etc.).



MODEL X39 ALIGNMENT LOCATIONS