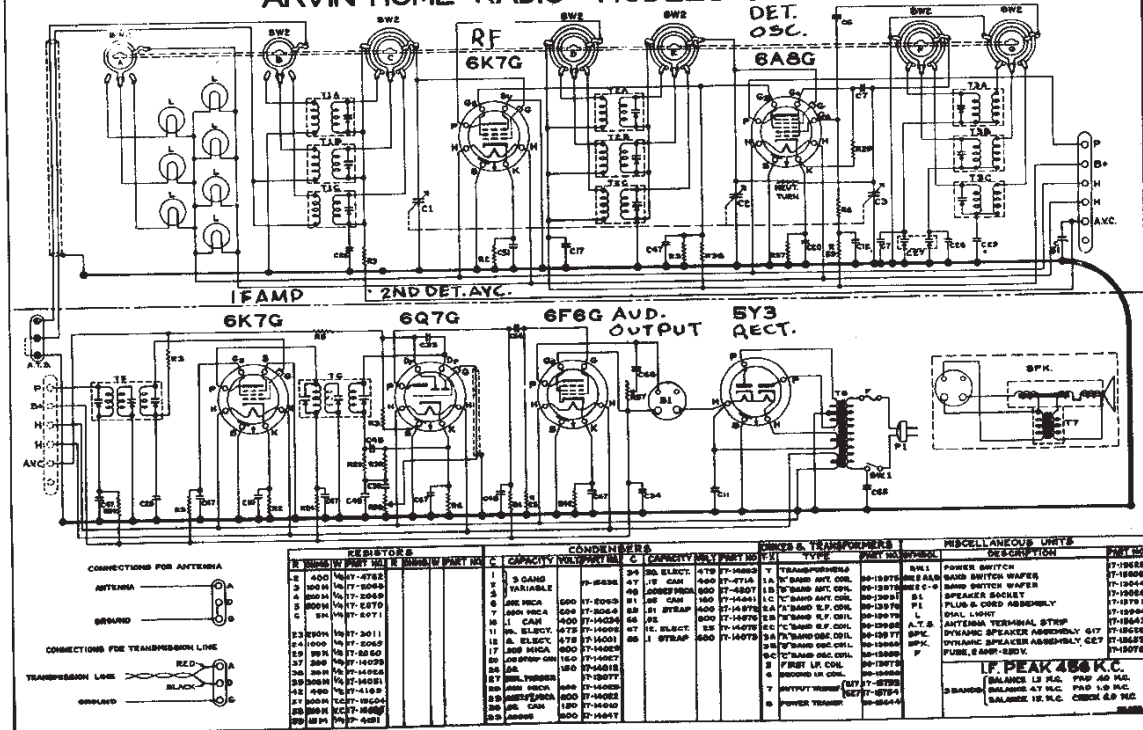


NOBLITT SPARKS INDUSTRIES

MODELS 617, 627
Schematic, Voltage
Resistance, Coils
Parts

SCHMATIC CIRCUIT DIAGRAM
ARVIN HOME RADIO MODELS 617 & 627



MODEL 617-627 SOCKET VOLTAGES
(INPUT VOLTAGE 115 RMS)

Tube	Heater	Plate	Screen	Cathode	Oscillator Grid, 1500 KC.	Anode Grid.
6K7G	6.3	250	100	3.0		
6A8G	6.3	250	100	3.0	9.0	170
6Q7G	6.3	115	90	1.3		
6F6G	6.3	240	250	15.0		
5Y3	5.0	330-0-330				

POINT TO POINT RESISTANCES SEE INDEX FOR ALIGNMENT

All readings taken to ground unless otherwise stated. Tubes removed.
Speaker connected and volume control in full on position.

6K7G	Heater	0	Heater	0	6F6G	Heater	0	
	Shell	0	Shell	0		Shell	0	
	Heater	1	Heater	1		Heater	1	
	Cathode	400 ohms	Cathode	400 ohms		Cathode	400 ohms	
	Suppressor Grid	0	Suppressor Grid	0		Control Grid	250,000 ohms	
	Screen to B+	30,000 ohms	Screen to B+	100,000 ohms		Screen to B+	0	
	Plate to B+	1.35-11.9	Plate to B+	1,000 ohms		Screen to Ground	130,000 ohms	
	Screen to Gnd.	100,000 ohms	Screen	230,000 ohms		Plate to B+	310 ohms	
	Control Grid	700,000 ohms	Control Grid	700,000 ohms				
6A8G	Heater	0	6Q7G	Heater	0	5Y3	Filament to B+	1,400 ohms
	Shell	0		Shell	0		Shell	0
	Heater	1		Heater	1		Filament to B+	1,400 ohms
	Cathode	300 ohms		Cathode	5,000 ohms		Plate	155 ohms
	Oscillator Grid	50,300 ohms		Diode	355,000 ohms		Plate	140 ohms
	Anode to B+	20,000 ohms		Plate to B+	100,000 ohms		Plate to Plate	295 ohms
	Screen to B+	30,000 ohms		Control Grid	200,000 ohms			
	Screen to Gnd.	100,000 ohms			500,000 ohms			
	Plate to B+	1,000 ohms						
	Control Grid	5.45-15 ohms						

COIL AND TRANSFORMER RESISTANCES

A Band Ant. Pri.	20 ohms	B Band Osc. Pri.	1.2 ohms	2nd I. F. Trans. Pri.	13.0 ohms
A Band Ant. Sec.	5 ohms	B Band Osc. Sec.	.75 ohms	2nd I. F. Trans. Sec.	13.0 ohms
A Band R. F. Pri.	1.35 ohms	C Band Ant. Pri.	.75 ohms	Power Trans. 6 V. Pri.	3 ohms
A Band R. F. Sec.	5 ohms	C Band Ant. Sec.	.45 ohms	Power Trans. 6 V. Sec.	1.0 ohms
A Band Osc. Pri.	2.9 ohms	C Band R. F. Pri.	9 ohms	Power Trans. Hi-V. Sec.	155-0-140 ohms
A Band Osc. Sec.	7.0 ohms	C Band R. F. Sec.	2 ohms	Output Trans. Pri.	310 ohms
B Band Ant. Pri.	1 ohms	C Band Osc. Pri.	5 ohms	Output Trans. Sec.	4 ohms
B Band Ant. Sec.	.45 ohms	C Band Osc. Sec.	25 ohms	Speaker Field	1400 ohms
B Band R. F. Pri.	1.1 ohms	1st I. F. Trans. Pri.	8.2 ohms	Speaker Voice Coil	50 ohms
B Band R. F. Sec.	9 ohms	1st I. F. Trans. Sec.	14.2 ohms		

FREQUENCY RANGE: 535—1700 Kilocycles
1700—5500 Kilocycles
5.5—18.5 Megacycles

POWER OUTPUT: 3.5 Watts
VOLTAGE AND FREQUENCY: 105-125 Volts, 60 Cycles
WATTS POWER CONSUMPTION: 85 Watts

Courtesy Nostalgia Air