

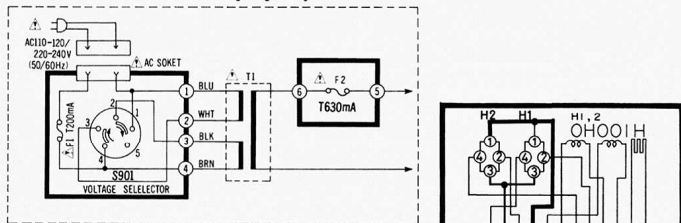
SCHEMATIC DIAGRAM (This schematic diagram may be modified at any time with the development of new technology.)

Notes:

1. **S1** : On/off switch in "on" position.
2. **S301** : Record detector switch in "off" position. (It is detects the record on the turn table.)
3. **S302** : Start switch in "off" position. (It is not pushed.)
4. **S303** : Stop switch in "off" position. (It is not pushed.)
5. **S304** : Cueing control switch in "off" position. (It is not pushed.)
6. **S305** : Repeat switch in "off" position. (It is not pushed.)
7. **S306** : Speed selector switch in "auto" position. 33 rpm \leftrightarrow auto \leftrightarrow 45 rpm
8. **S601** : Rest switch in "off" position. (Tonearm is off the rest position.)
9. **S701** : Record size detector switch in "on" position. (17 cm record is on the turntable.)
10. **S702** : Cabinet switch in "on" position. (Upper cabinet is closed.)
11. **S901** : Voltage selector in "110 - 120V" position. 110 - 120V \leftrightarrow 220 - 240V
12. Indicated voltage values are the standard values for the measured by the DC electronic circuit tester (high-impedance) with the chassis taken as standard. Therefore, there may exist some errors in the voltage values, depending on the internal impedance of the DC circuit tester or the set measured.
 - \square is the voltage at 45 rpm.
 - \square is the voltage at 33 rpm.
 - \square is the voltage when tonearm is in lead-in mode.
 - \square is the voltage when tonearm is in return mode.
 - \square is the voltage when turntable is in stop.
 - \square is the voltage when tonearm is at the rest position.
 - \square is the terminal that changes according to 5V pulse waveform or key switch position.

13. — Positive voltage lines.
14. Important safety notice: Components identified by Δ mark have special characteristics important for safety. When replacing any of these components, use only manufacturer's specified parts.

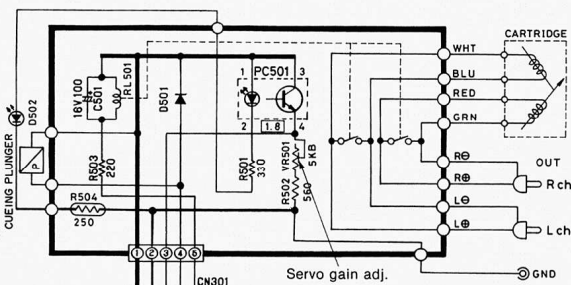
• Power source circuit for [XA] only.



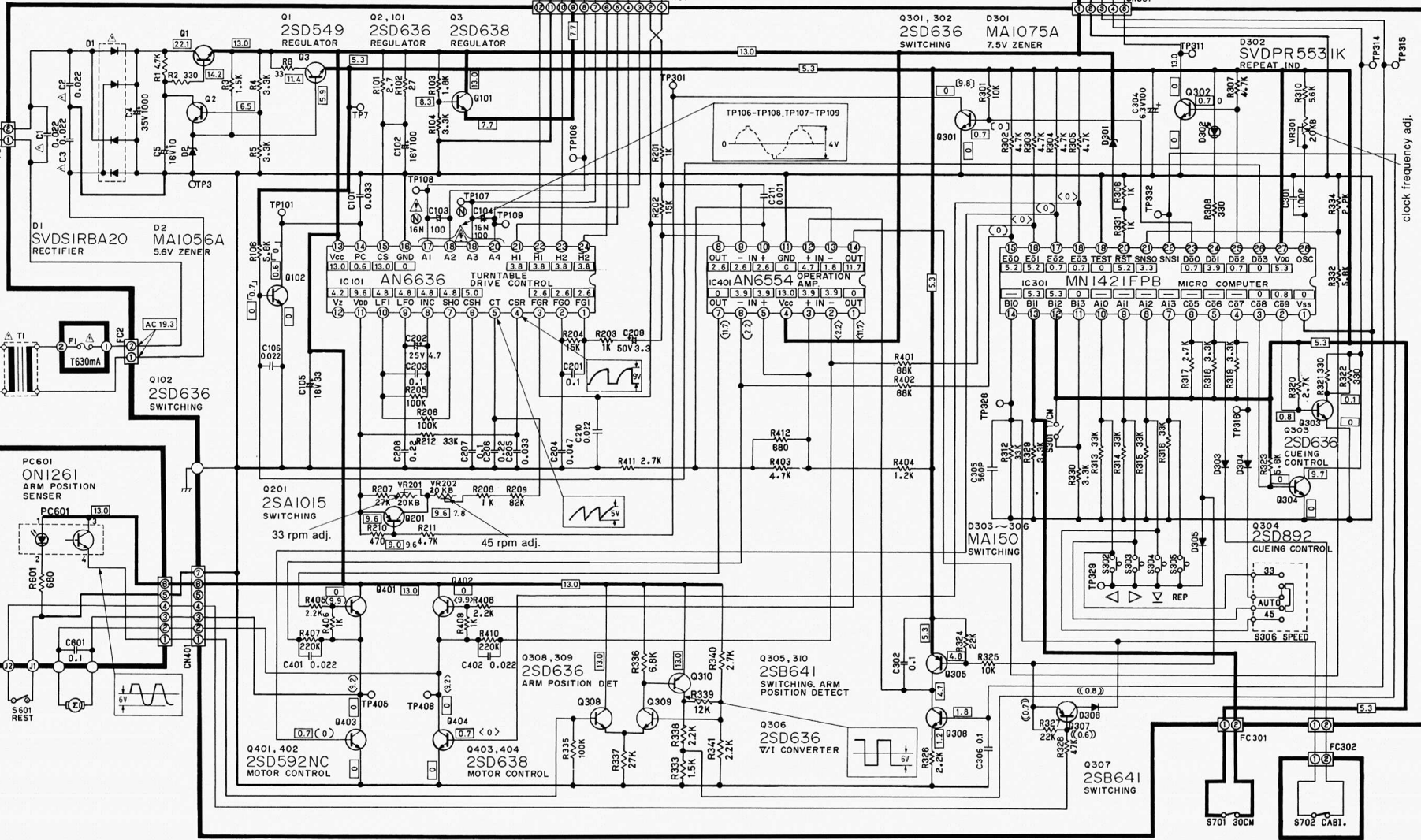
PC501
ON1262

D501
MA150

D502
SVDPR3432S
ARM INDICATOR



A
B
C
D
E
F
G
H



clock frequency adj.

S701 30CM
S702 CABI.