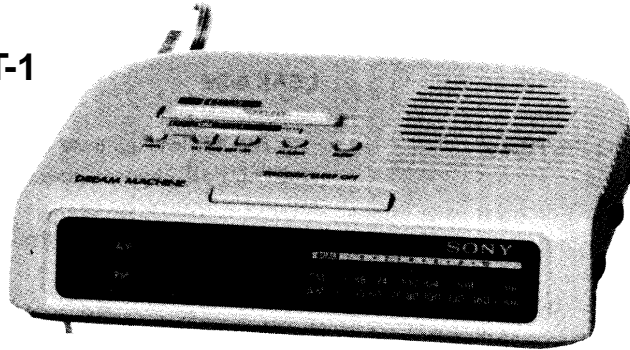


# ICF-C25

## SERVICE MANUAL

Ver 1.0 2000.03  
With SUPPLEMENT-1  
(9-959-894-81)

*US Model  
Canadian Model  
E Model*



### SPECIFICATIONS

**Frequency range**

FM: 87.6 - 108 MHz  
AM: 530 - 1605 kHz

**Speaker**

Approx. 6.6 cm (2<sup>5</sup>/<sub>8</sub> inches) dia.

**Power output**

180 mW (at 10 % harmonic distortion)

**Power requirements**

120 V AC, 60 Hz  
For the power back-up function : 9 V DC, one  
6F22 battery

**Battery life**

Approx. 200 minutes, using Sony S-006P(U)  
battery

**Dimensions**

Approx. 197 x 52 x 137.5 mm (w/h/d)  
(7<sup>7</sup>/<sub>8</sub> x 2 x 5<sup>1</sup>/<sub>2</sub> inches) incl. projecting parts  
and controls

**Mass**

Approx. 490 g (1 lb 1 oz) not incl. battery

Design and specifications are subject to change  
without notice.



FM/AM CLOCK RADIO  
**SONY**®

## FEATURES

- Electronic digital alarm clock and sleep timer are combined.
- Two wake-up modes available : radio or buzzer alarm.
- SNOOZE bar, operable with a feather-light touch, offers two functions : snooze alarm and sleep timer turn off.
- Power back-up function to keep the clock operating during a power interruption, using an optional 6F22 battery.

## HOW TO CHANGED THE CERAMIC FILTERS

This model is used three ceramic filters. You must used same type of color marked ceramic filters in order to meet same specifications CF2, CF3.

Therefore, the ceramic filter must changed two pieces together since it's supply two pieces in one package as a spare parts.

mark	center frequency
CF3	red 10.70MHz
	blue 10.67MHz
CF2	orange 10.73MHz
	black 10.64MHz
	white 10.76MHz

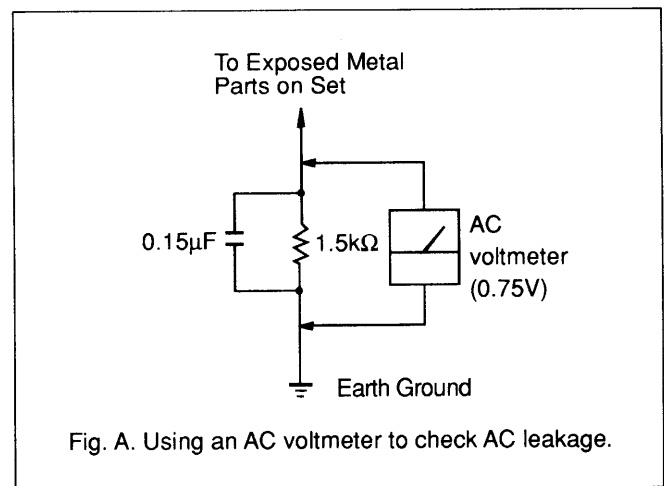
## SAFETY CHECK-OUT

After correcting the original service problem, perform the following safety checks before releasing the set to the customer: Check the antenna terminals, metal trim, "metallized" knobs, screws, and all other exposed metal parts for AC leakage. Check leakage as described below.

## LEAKAGE

The AC leakage from any exposed metal part to earth ground and from all exposed metal parts to any exposed metal part having a return to chassis, must not exceed 0.5 mA (500 microamperes). Leakage current can be measured by any one of three methods.

1. A commercial leakage tester, such as the Simpson 229 or RCA WT-540A. Follow the manufacturers' instructions to use these instruments.
2. A battery-operated AC milliammeter. The Data Precision 245 digital multimeter is suitable for this job.
3. Measuring the voltage drop across a resistor by means of a VOM or battery-operated AC voltmeter. The "limit" indication is 0.75 V, so analog meters must have an accurate low-voltage scale. The Simpson 250 and Sanwa SH-63Trd are examples of a passive VOM that is suitable. Nearly all battery operated digital multimeters that have a 2V AC range are suitable. (See Fig. A)



### SAFETY-RELATED COMPONENT WARNING !!

COMPONENTS IDENTIFIED BY MARK  $\Delta$  OR DOTTED LINE WITH MARK  $\Delta$  ON THE SCHEMATIC DIAGRAMS AND IN THE PARTS LIST ARE CRITICAL TO SAFE OPERATION. REPLACE THESE COMPONENTS WITH SONY PARTS WHOSE PART NUMBERS APPEAR AS SHOWN IN THIS MANUAL OR IN SUPPLEMENTS PUBLISHED BY SONY.

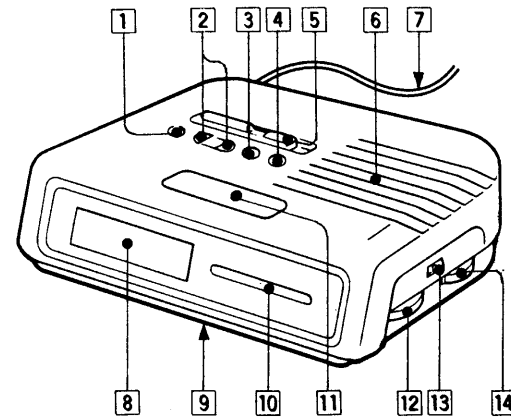
### ATTENTION AU COMPOSANT AYANT RAPPORT À LA SÉCURITÉ!!

LES COMPOSANTS IDENTIFIÉS PAR UNE MARQUE  $\Delta$  SUR LES DIAGRAMMES SCHÉMATIQUES ET LA LISTE DES PIÈCES SONT CRITIQUES POUR LA SÉCURITÉ DE FONCTIONNEMENT. NE REMPLACER CES COMPOSANTS QUE PAR DES PIÈCES SONY DONT LES NUMÉROS SONT DONNÉS DANS CE MANUEL OU DANS LES SUPPLÉMENTS PUBLIÉS PAR SONY.

## SECTION 1 GENERAL

This section is extracted from instruction manual.

### 1-1. LOCATION OF CONTROLS



#### Location of Controls (See illustration above.)

- |   |  |
|---|--|
| 1 CLOCK set button                                      | 8 Time display                               |
| 2 TIME SET buttons (H/M)                                | 9 Power back-up battery compartment (bottom) |
| 3 ALARM set button                                      | 10 Dial scale                                |
| 4 SLEEP button  | 11 SNOOZE/SLEEP OFF bar                      |
| 5 Function selector (RADIO ON/OFF, ALARM RADIO BUZZER)  | 12 TUNING control                            |
| 6 Speaker   | 13 BAND selector FM/AM                       |
| 7 AC power cord (rear) (also function as an FM antenna) | 14 VOL (volume) control                      |

### Setting the Clock

- Plug in the unit. The display will flash AM 12:00.
- To set the hour, while holding down the **CLOCK** button, press the **TIME SET H** button. When the correct hour appears in the display, release the **CLOCK** button.
- To set the minute, while holding down the **CLOCK** button, press the **TIME SET M** button. When the correct minute appears in the display, release the **CLOCK** button. The clock will begin to operate.

- Each press on the **TIME SET H** or **TIME SET M** button advances the displayed number by one.
- The minute digits advance to "00" after "59". The hour digits do not advance by pressing the **TIME SET M** button.
- To adjust the time exactly to the second, release the **TIME SET H** or **TIME SET M** button simultaneously with the radio or telephone time signal.

### Playing the Radio

- Set the **ALARM** selector to **RADIO ON** to turn on the radio and adjust **VOL** (volume).
- Select **FM** or **AM** and tune in a station using the **TUNING** dial.

- To turn off the radio, set the **ALARM** selector to **OFF**.
- To improve radio reception **FM**: Since the antenna is encased in the AC power cord, extend the cord to improve FM reception.
- AM**: Rotate the unit horizontally for optimum reception. A ferrite bar antenna is built into the unit.

### Setting the Alarm

To set the radio alarm, first tune in a station and adjust the volume.

- To set the hour for alarm, while holding down the **ALARM** button, press the **TIME SET H** button. When the desired hour appears in the display, release the **ALARM** button.
- To set the minute for alarm, while holding down the **ALARM** button, press the **TIME SET M** button. When the desired minute appears in the display, release the **ALARM** button.
- Set the **ALARM** selector to **RADIO** or **BUZZER**. The alarm will come on at the preset time and automatically turn itself off after 119 minutes.

- To shut off the alarm, set the **ALARM** selector to **OFF**.
- To sound the alarm at the preset time the next day, set the **ALARM** selector to **RADIO** or **BUZZER** again.
- To cancel either alarm, set the **ALARM** selector to **OFF**.
- To doze a few more minutes, press **SNOOZE/SLEEP OFF**. The alarm will shut off, but will come on again after about 9 minutes. You can repeat this process as many times as you like.
- To adjust the radio alarm volume, turn **VOL**. The buzzer volume is fixed.
- To check the preset time, press **ALARM** button.

### Setting the Sleep Timer

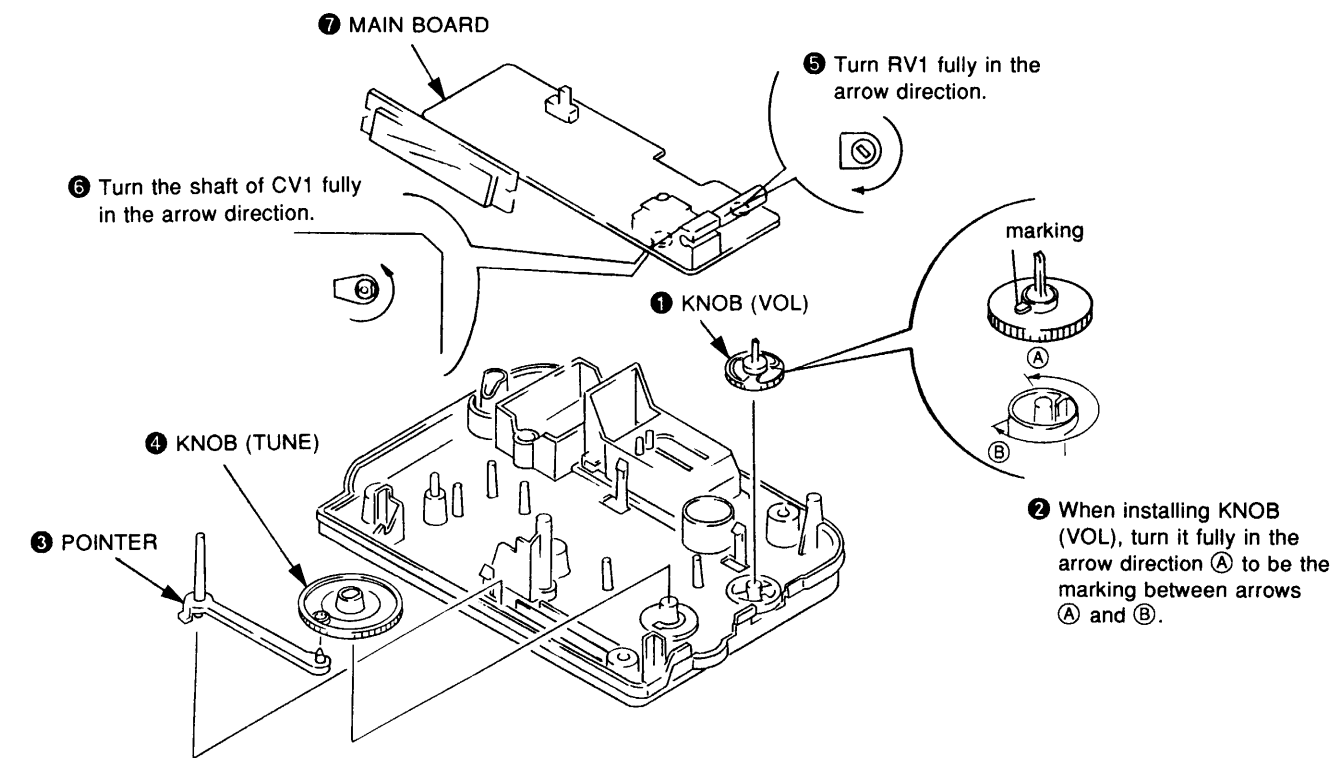
Enjoy falling asleep to the radio using the built-in sleep timer that shuts off the radio automatically at a preset time.

- While listening to the radio, set the **ALARM** selector to **OFF**.
- Press **SLEEP**. The radio turns on. It will go off after 59 minutes.

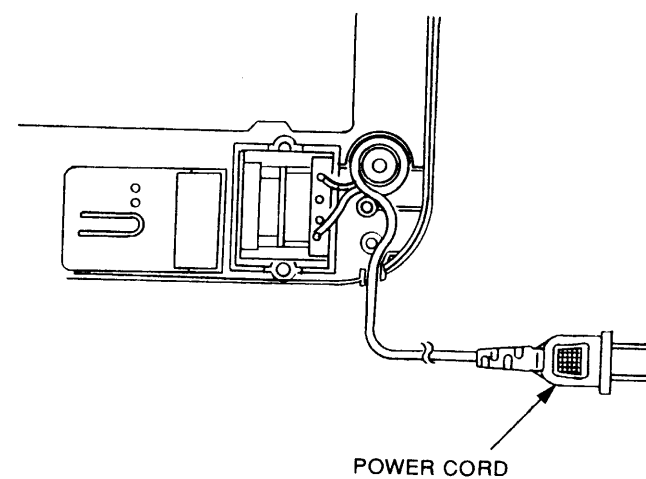
- To turn off the radio before the preset time, press **SNOOZE/SLEEP OFF**.
- Every time you press **SLEEP**, the sleep timer is reset to 59 minutes.
- When you set the **ALARM** selector to **RADIO** or **BUZZER**, if the preset alarm time comes while the sleep timer is operating, the radio or buzzer sounds depending on which you set.

## SECTION 2 DIAL POINTER SETTING

### NOTE FOR INSTALLATION (KNOB (VOL), (TUNE))

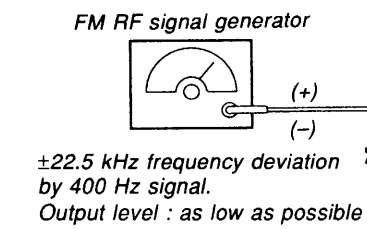


### POWER CORD DRESSING

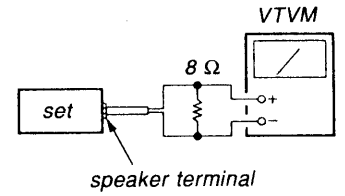
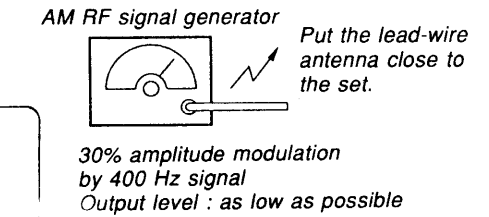


## SECTION 3 ELECTRICAL ADJUSTMENTS

### FM Section



### AM Section



- Repeat the procedures in each adjustment several times, and the frequency coverage and tracking adjustments should be finally done by the trimmer capacitors.

FM FREQUENCY COVERAGE ADJUSTMENT	
Adjust for a maximum reading on VTVM.	
L3	86.5 MHz
CT3	109.5 MHz

FM TRACKING ADJUSTMENT	
Adjust for a maximum reading on VTVM.	
confirm	86.5 MHz
CT2	109.5 MHz

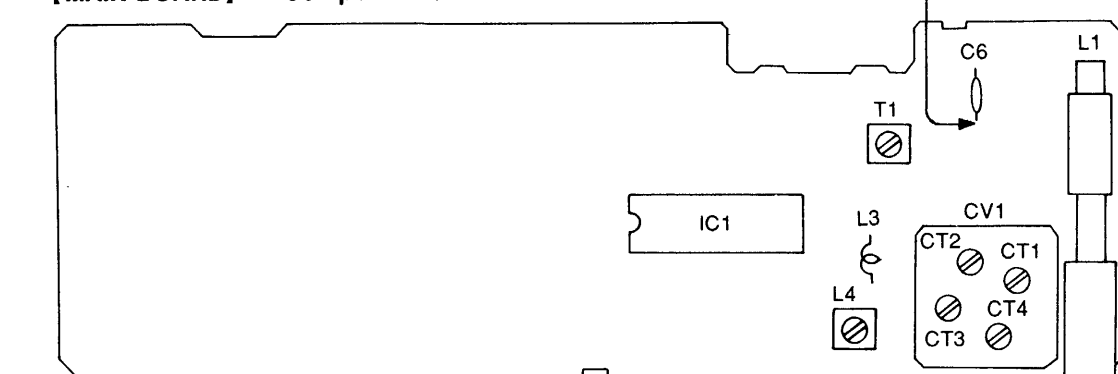
AM IF ADJUSTMENT	
Adjust for a maximum reading on VTVM.	
T1	455 kHz

AM FREQUENCY COVERAGE ADJUSTMENT	
Adjust for a maximum reading on VTVM.	
L4	520 kHz
CT4	1,650 kHz

AM TRACKING ADJUSTMENT	
Adjust for a maximum reading on VTVM.	
L1	600 kHz
CT1	1,500 kHz

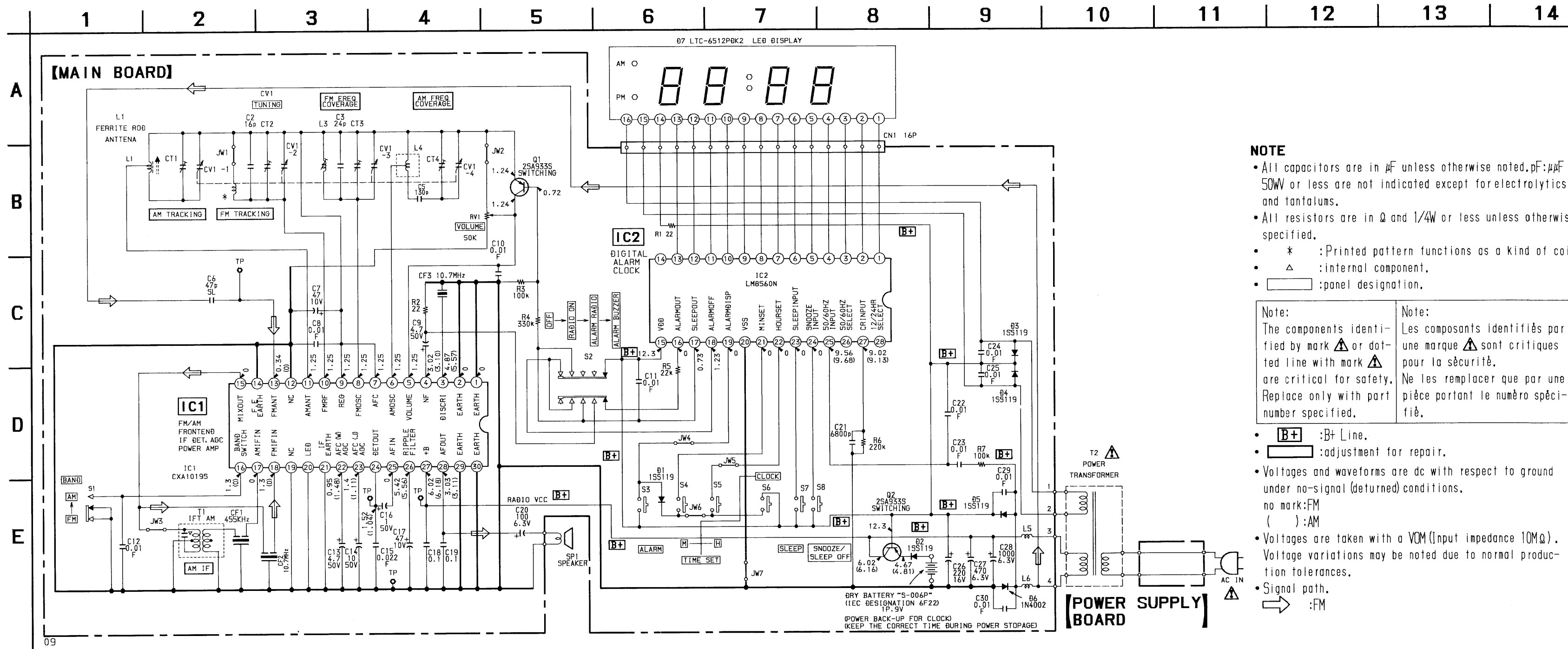
### Adjustment Location :

[MAIN BOARD] — Component Side —



SECTION 4  
DIAGRAMS

4-1. SCHEMATIC DIAGRAM



NOTE

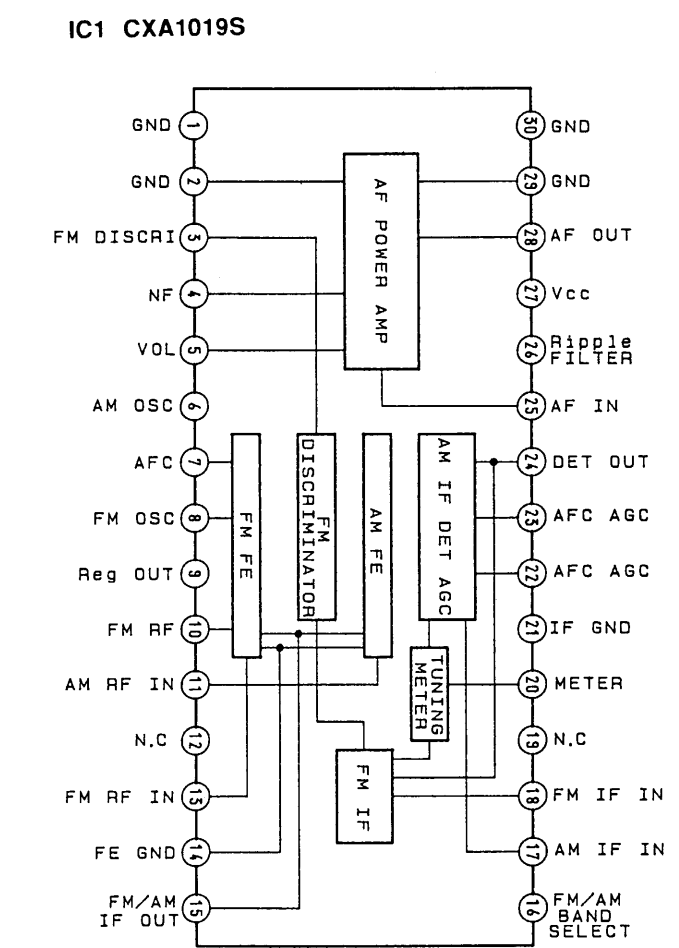
- All capacitors are in  $\mu\text{F}$  unless otherwise noted, pF:  $\mu\text{F}$  50WV or less are not indicated except for electrolytics and tantalums.
- All resistors are in  $\Omega$  and 1/4W or less unless otherwise specified.
- \* : Printed pattern functions as a kind of coil.
- $\Delta$  : internal component.
- $\square$  : panel designation.

Note: The components identified by mark  $\Delta$  or dotted line with mark  $\Delta$  are critical for safety. Replace only with part number specified.

Note: Les composants identifiés par une marque  $\Delta$  sont critiques pour la sécurité. Ne les remplacer que par une pièce portant le numéro spécifié.

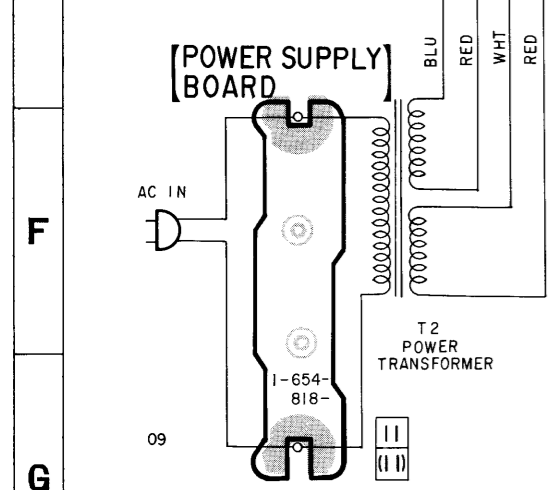
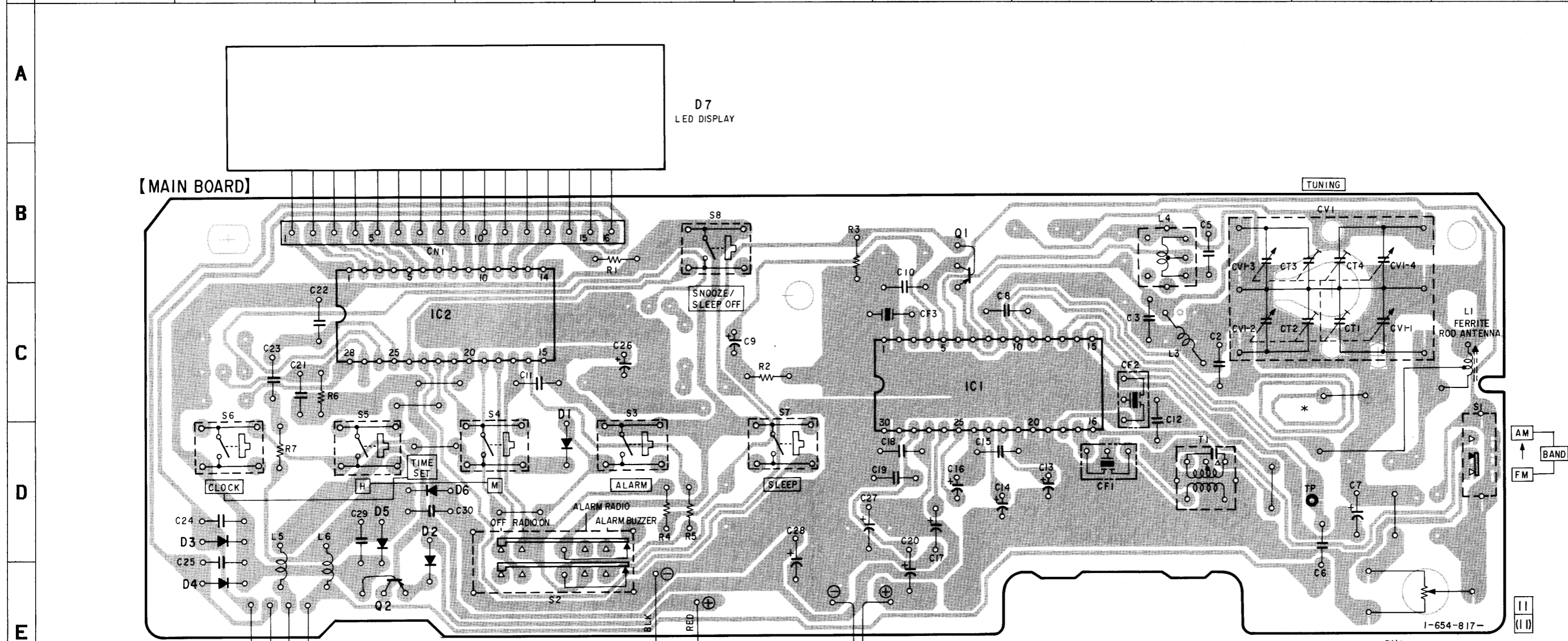
- $\square$  B+ : B+ Line.
- $\square$  : adjustment for repair.
- Voltages and waveforms are dc with respect to ground under no-signal (detuned) conditions.
- no mark: FM
- ( ): AM
- Voltages are taken with a VOM (Input impedance 10M $\Omega$ ). Voltage variations may be noted due to normal production tolerances.
- Signal path.
- $\rightarrow$  : FM

• IC Block Diagram



4-2. PRINTED WIRING BOARD

	1	2	3	4	5	6	7	8	9	10	11
--	---	---	---	---	---	---	---	---	---	----	----



DRY BATTERY S-006P  
(IEC DESIGNATION)  
6F22  
1P, 9V  
(POWER BACK-UP FOR CLOCK)  
(KEEP THE CORRECT TIME DURING POWER STOPPAGE)

**NOTE**

- :parts extracted from the component side.
- \* :Printed pattern functions as a kind of coil.
- :Pattern from the side which enable seeing.

• **Semiconductor Location**

Ref. No.	Location
D1	D-4
D2	E-3
D3	D-2
D4	E-2
D5	D-3
D6	D-3
D7	A-3
IC1	C-7
IC2	C-3
Q1	B-7
Q2	E-3

## SECTION 5 EXPLODED VIEWS

**NOTE:**

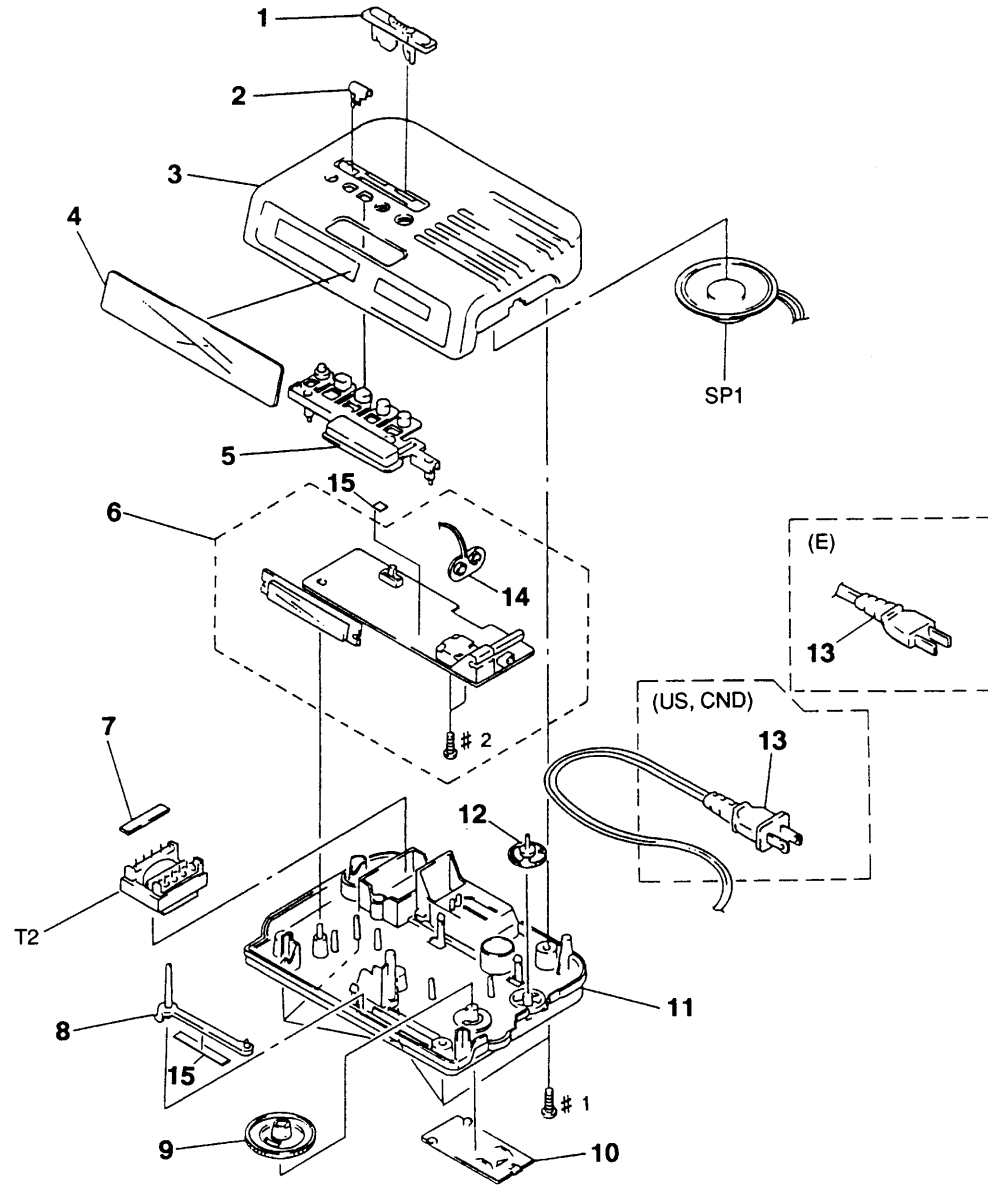
- -XX, -X mean standardized parts, so they may have some difference from the original one.
- The mechanical parts with no reference number in the exploded views are not supplied.
- Color Indication of Appearance Parts Example:  
KNOB, BALANCE (WHITE) ... (RED)

↑            ↑  
Parts color Cabinet's color

- Items marked "\*" are not stocked since they are seldom required for routine service. Some delay should be anticipated when ordering these items.
- Hardware (# mark) list and accessories and packing materials are given in the last of this parts list.
- Abbreviation  
CND : Canadian model

The components identified by mark  $\Delta$  or dotted line with mark  $\Delta$  are critical for safety.  
Replace only with part number specified.

Les composants identifiés par une marque  $\Delta$  sont critiques pour la sécurité.  
Ne les remplacer que par une pièce portant le numéro spécifié.



Ref. No.	Part No.	Description	Remark	Ref. No.	Part No.	Description	Remark
1	3-919-266-01	KNOB (FUNCTION) (BLACK)... (BLACK)		9	3-919-267-01	KNOB (TUNE)	
1	3-919-266-11	KNOB (FUNCTION) (WHITE)... (WHITE)		10	3-369-135-21	LID, BATTERY CASE	
2	3-919-270-01	MARKER		11	3-919-264-01	CABINET (LOWER) (BLACK)... (BLACK)	
3	3-919-263-01	CABINET (UPPER) (BLACK)... (BLACK)		11	3-919-264-11	CABINET (LOWER) (WHITE)... (WHITE)	
3	3-919-263-11	CABINET (UPPER) (WHITE)... (WHITE)		12	3-919-268-01	KNOB (VOL)	
4	3-919-272-01	SCALE, DIAL		$\Delta$ 13	1-775-367-31	CORD, POWER (US, CND)	
5	3-919-265-01	BUTTON (BLACK)... (BLACK)		$\Delta$ 13	1-775-367-41	CORD, POWER (E)	
5	3-919-265-11	BUTTON (WHITE)... (WHITE)		14	1-535-804-21	SNAP, BATTERY	
* 6	A-3679-648-A	MAIN BOARD, COMPLETE		15	3-831-441-XX	SHEET	
* 7	1-654-818-11	POWER SUPPLY BOARD					
8	3-919-269-01	POINTER		SP1	1-504-748-11	SPEAKER (6.6CM)	
				$\Delta$ T2	1-449-801-21	TRANSFORMER, POWER	

## MAIN

**NOTE:**

The components identified by mark  $\Delta$  or dotted line with mark  $\Delta$  are critical for safety.  
Replace only with part number specified.

Les composants identifiés par une marque  $\Delta$  sont critiques pour la sécurité.  
Ne les remplacer que par une pièce portant le numéro spécifié.

When indicating parts by reference number, please include the board name.

Ref. No.	Part No.	Description	Remark
*	A-3679-648-A	MAIN BOARD, COMPLETE *****	
	1-535-804-21	SNAP, BATTERY	
	7-621-770-87	SCREW +P 2.6X5	
		< CAPACITOR >	
C2	1-102-952-00	CERAMIC 16PF 5% 50V	
C3	1-102-960-00	CERAMIC 24PF 5% 50V	
C5	1-101-081-00	CERAMIC 130PF 5% 50V	
C6	1-101-880-00	CERAMIC 47PF 5% 50V	
C7	1-124-126-00	ELECT 47uF 20% 10V	
C8	1-101-004-00	CERAMIC 0.01uF 50V	
C9	1-124-927-11	ELECT 4.7uF 20% 100V	
C10	1-101-004-00	CERAMIC 0.01uF 50V	
C11	1-101-004-00	CERAMIC 0.01uF 50V	
C12	1-101-004-00	CERAMIC 0.01uF 50V	
C13	1-124-927-11	ELECT 4.7uF 20% 100V	
C14	1-124-907-11	ELECT 10uF 20% 50V	
C15	1-101-005-00	CERAMIC 22000PF 50V	
C16	1-124-903-11	ELECT 1uF 20% 50V	
C17	1-124-126-00	ELECT 47uF 20% 10V	
C18	1-162-851-11	CERAMIC 0.1uF 10% 16V	
C19	1-162-851-11	CERAMIC 0.1uF 10% 16V	
C20	1-124-443-00	ELECT 100uF 20% 10V	
C21	1-161-049-00	CERAMIC 0.0068uF 10% 50V	
C22	1-101-004-00	CERAMIC 0.01uF 50V	
C23	1-101-004-00	CERAMIC 0.01uF 50V	
C24	1-101-004-00	CERAMIC 0.01uF 50V	
C25	1-101-004-00	CERAMIC 0.01uF 50V	
C26	1-126-934-11	ELECT 220uF 20% 16V	
C27	1-124-472-11	ELECT 470uF 20% 10V	
C28	1-124-471-00	ELECT 1000uF 20% 6.3V	
C29	1-101-004-00	CERAMIC 0.01uF 50V	
C30	1-101-004-00	CERAMIC 0.01uF 50V	

Ref. No.	Part No.	Description	Remark
		< FILTER >	
CF1	1-577-072-11	FILTER, CERAMIC (455kHz)	
CF2	1-760-144-61	FILTER, CERAMIC (10.7MHz)	
CF3	1-760-144-61	FILTER, CERAMIC (10.7MHz)	

## SECTION 6 ELECTRICAL PARTS LIST

- Due to standardization, replacements in the parts list may be different from the parts specified in the diagrams or the components used on the set.
- Items marked "\*" are not stocked since they are seldom required for routine service. Some delay should be anticipated when ordering these items.
- RESISTORS  
All resistors are in ohms  
F : nonflammable
- SEMICONDUCTORS  
In each case, u:  $\mu$ , for example:  
uA...:  $\mu$ A..., uPA...:  $\mu$ PA...,  
uPB...:  $\mu$ PB..., uPC...:  $\mu$ PC...,  
uPD...:  $\mu$ PD...

- CAPACITORS  
uF :  $\mu$ F
- COILS  
uH :  $\mu$ H
- Hardware (# mark) list and accessories and packing materials are given in the last of this parts list.
- Abbreviation  
CND : Canadian model

Ref. No.	Part No.	Description	Remark
		< CONNECTOR >	
* CN1	1-769-137-11	CORD, CONNECTION (16 CORE)	
		< VARIABLE CAPACITOR >	
CT1-4 CV1	1-141-526-11	CAP, VAR (TUNING)	
		< DIODE >	
D1	8-719-911-19	DIODE 1SS119	
D2	8-719-911-19	DIODE 1SS119	
D3	8-719-911-19	DIODE 1SS119	
D4	8-719-911-19	DIODE 1SS119	
D5	8-719-911-19	DIODE 1SS119	
D6	8-719-052-88	DIODE 1N4002	
D7	1-809-515-11	DIODE LTC-6512PDK2	
		< IC >	
IC1	8-752-035-29	IC CXA1019S	
IC2	8-759-821-46	IC LM8560N	
		< COIL >	
L1	1-501-742-11	ANTENNA, FERRITE-ROD (MW)	
L3	1-428-163-11	COIL, AIR-CORE (FM OSC)	
L4	1-411-175-11	COIL (MW OSC)	
L5	1-411-136-11	COIL, AIR-CORE	
L6	1-411-136-11	COIL, AIR-CORE	
		< TRANSISTOR >	
Q1	8-729-119-76	TRANSISTOR 2SA1175-HFE	
Q2	8-729-119-76	TRANSISTOR 2SA1175-HFE	
		< RESISTOR >	
R1	1-249-397-11	CARBON 22 5% 1/4W F	
R2	1-249-397-11	CARBON 22 5% 1/4W F	
R3	1-249-441-11	CARBON 100K 5% 1/4W	
R4	1-247-891-00	CARBON 330K 5% 1/4W	
R5	1-249-433-11	CARBON 22K 5% 1/4W	
R6	1-247-887-00	CARBON 220K 5% 1/4W	
R7	1-249-441-11	CARBON 100K 5% 1/4W	

Ref.No.	Part No.	Description	Remark
		< VARIABLE RESISTOR >	
RV1	1-228-790-00	RES, VAR, CARBON 50K (VOL)	
		< SWITCH >	
S1	1-762-231-11	SWITCH, SLIDE (BAND)	
S2	1-762-232-11	SWITCH, SLIDE (FUNCTION)	
S3	1-762-233-11	SWITCH, KEYBOARD (ALARM)	
S4	1-762-233-11	SWITCH, KEYBOARD (TIME SET M)	
S5	1-762-233-11	SWITCH, KEYBOARD (TIME SET H)	
S6	1-762-233-11	SWITCH, KEYBOARD (CLOCK)	
S7	1-762-233-11	SWITCH, KEYBOARD (SLEEP)	
S8	1-762-233-11	SWITCH, KEYBOARD (SNOOZE/SLEEP OFF)	
		< TRANSFORMER >	
T1	1-404-790-11	TRANSFORMER, IF (AM)	
*****			
*	1-654-818-11	POEWR SUPPLY BOARD *****	
*****			
		MISCELLANEOUS *****	
* 7	1-654-818-11	POEWR SUPPLY BOARD	
△13	1-775-367-31	CORD, POWER (US, CND)	
△13	1-775-367-41	CORD, POWER (E)	
14	1-535-804-21	SNAP, BATTERY	
SP1	1-504-748-11	SPEAKER (6.6CM)	
△T2	1-449-801-21	TRANSFORMER, POWER	
*****			
		ACCESSORIES & PACKING MATERIALS *****	
*	3-324-066-01	SHEET, PROTECTION	
	3-759-864-11	MANUAL, INSTRUCTION (ENGLISH, FRENCH, SPANISH) (CND, E)	
	3-759-864-21	MANUAL, INSTRUCTION (ENGLISH) (US)	
*	3-919-695-01	INDIVIDUAL CARTON	
*****			
		***** HARDWARE LIST *****	
#1	7-685-549-11	SCREW +BTP 3X14 TYPE2 N-S	
#2	7-621-770-87	SCREW +P 2.6X5	

<p>The components identified by mark △ or dotted line with mark △ are critical for safety. Replace only with part number specified.</p>	<p>Les composants identifiés par une marque △ sont critiques pour la sécurité. Ne les remplacer que par une pièce portant le numéro spécifié.</p>
---	---





# ICF-C25

SONY®

US Model  
Canadian Model  
E Model

## SERVICE MANUAL

2000. 03

### SUPPLEMENT-1

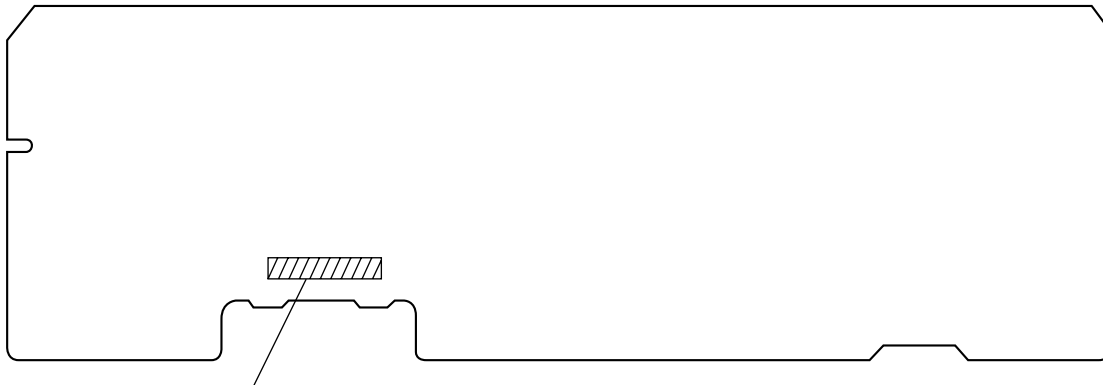
File this supplement with the service manual.

Subject: MAIN/POWER SUPPLY Board Modification

(ECN-TR801616, TRA00154)

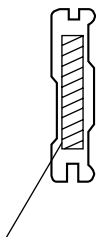
- NEW/FORMER TYPE DISCRIMINATION

– MAIN BOARD (Component Side) –



Former Type : 1-654-817-11  
New Type : 1-654-817-12

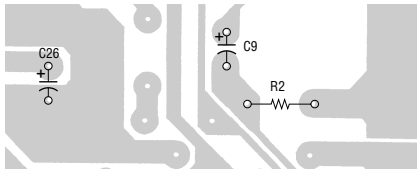
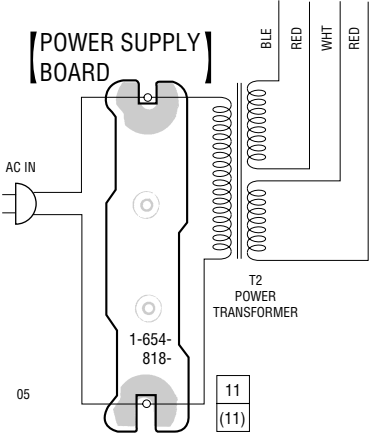
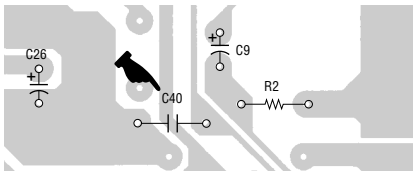
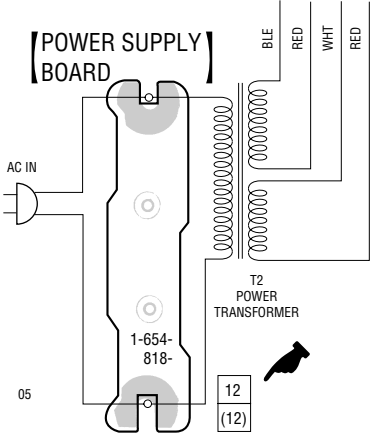
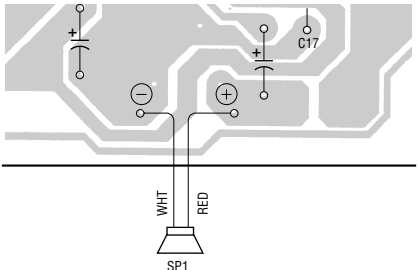
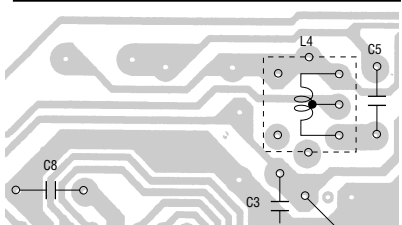
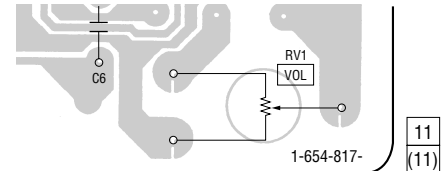
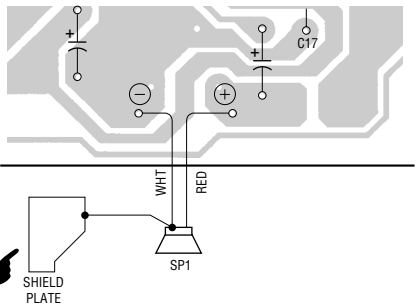
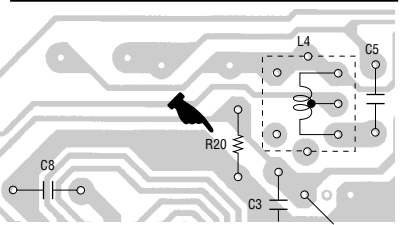
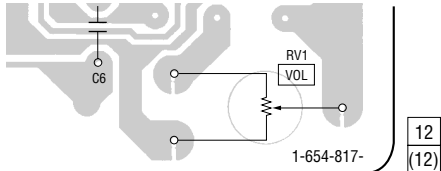
– POWER SUPPLY BOARD (Component Side) –



Former Type : 1-654-818-11  
New Type : 1-654-818-12

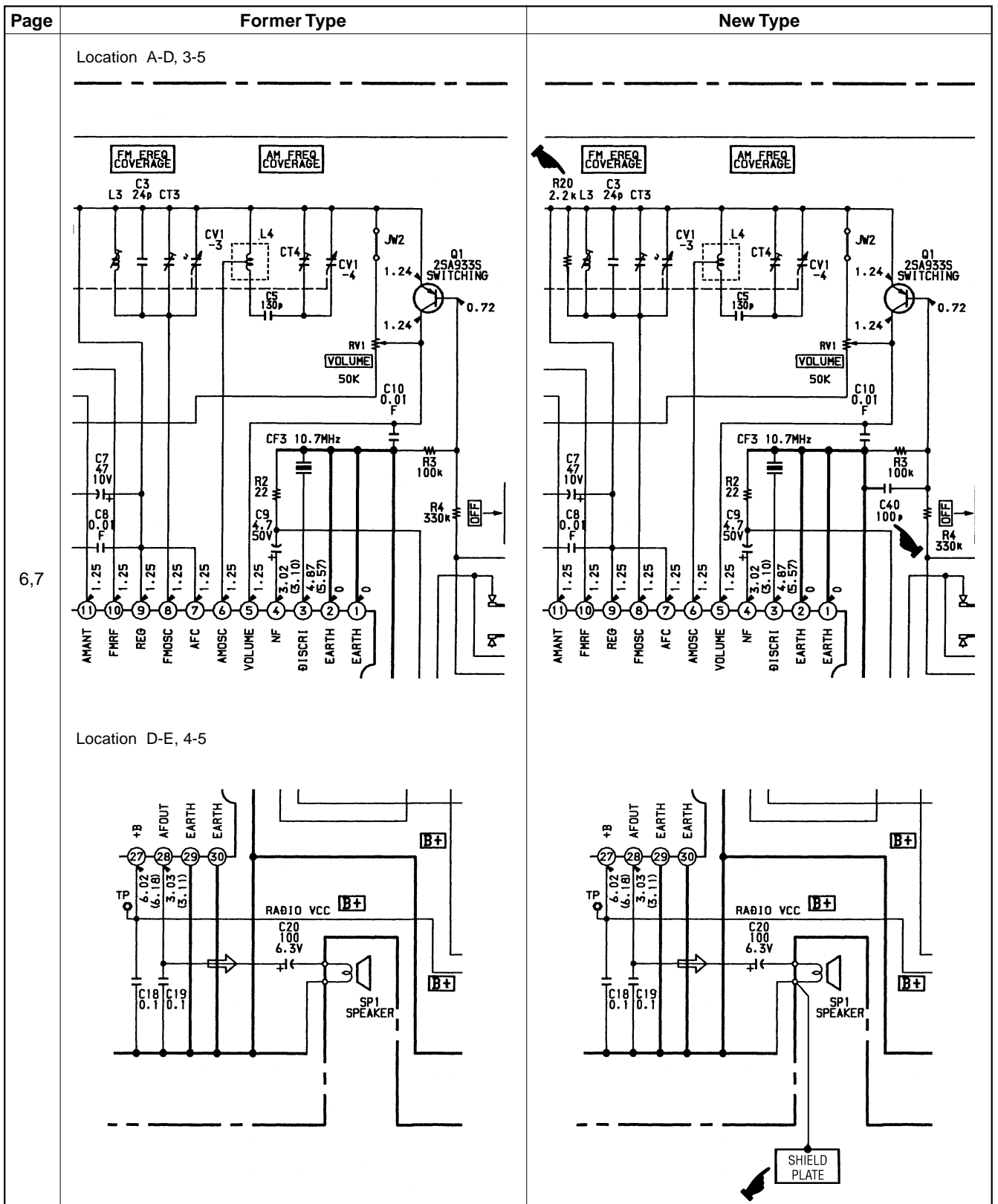
• PRINTED WIRING BOARD

 : Changed portion.

Page	Former Type	New Type
9	<p>Location C-D, 5-6</p>  <p>Location E-G, 1-2</p> 	 
	<p>Location D-E, 5-7</p>  <p>Location B-C, 7-9</p>  <p>Location D-E, 10-11</p> 	  

• SCHEMATIC DIAGRAM

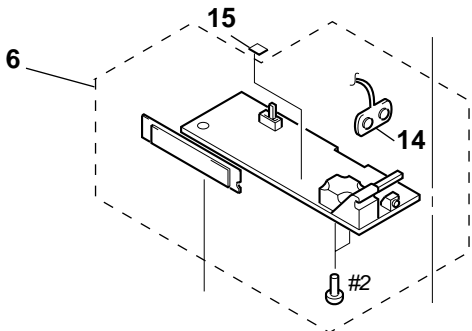
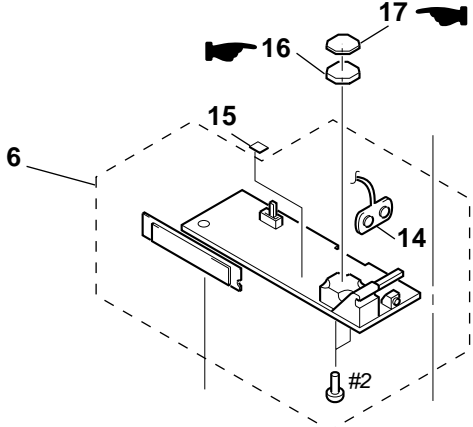
👉 : Changed portion.



• DIFFERENCE PARTS LIST

(1) EXPLODED VIEWS

 : Indicates added portion.

Page	Former Type				New Type			
	Ref. No.	Part No.	Description	Remark	Ref. No.	Part No.	Description	Remark
11	△ 13	1-775-367-31	CORD, POWER (US, CND)		△ 13	1-783-817-21	CORD, POWER (US, CND)	
	△ 13	1-775-367-41	CORD, POWER (E)		△ 13	1-769-339-22	CORD, POWER (E)	
	15	3-831-441-XX	SHEET		15	3-831-441-99	CUSHION	
	SP1	1-504-748-11	SPEAKER (6.6CM)		16	3-041-881-01	CUSHION (SHIELD)	
	△ T2	1-449-801-21	TRANSFORMER, POWER		17	3-041-074-01	CUSHION (COVER)	
								

(2) ELECTRICAL PARTS LIST

Page	Former Type				New Type			
	Ref. No.	Part No.	Description	Remark	Ref. No.	Part No.	Description	Remark
12					C40	1-162-282-31	CERAMIC 100PF 10% 50V	
					R20	1-249-421-11	CARBON 2.2K 5% 1/4W	
13	MISCELLANEOUS *****				MISCELLANEOUS *****			
	△ 13	1-775-367-31	CORD, POWER (US, CND)		△ 13	1-783-817-21	CORD, POWER (US, CND)	
	△ 13	1-775-367-41	CORD, POWER (E)		△ 13	1-769-339-22	CORD, POWER (E)	
	SP1	1-504-748-11	SPEAKER (6.6CM)		SP1	1-504-748-21	SPEAKER (6.6cm)	
	△ T2	1-449-801-21	TRANSFORMER, POWER		△ T2	1-427-927-11	TRANSFORMER, POWER	
	*****				*****			
	ACCESSORIES & PACKING MATERIALS *****				ACCESSORIES & PACKING MATERIALS *****			
	*	3-324-066-01	SHEET, PROTECTION		not supplied			
	*	3-919-695-01	INDIVIDUAL CARTON		not supplied			

• Items marked “\*” are not stocked since they are seldom required for routine service. Some delay should be anticipated when ordering these items.

<p><b>Note:</b> The components identified by mark △ or dotted line with mark △ are critical for safety. Replace only with part number specified.</p>	<p><b>Note:</b> Les composants identifiés par une marque △ sont critiques pour la sécurité. Ne les remplacer que par une pièce portant le numéro spécifié.</p>
--	--