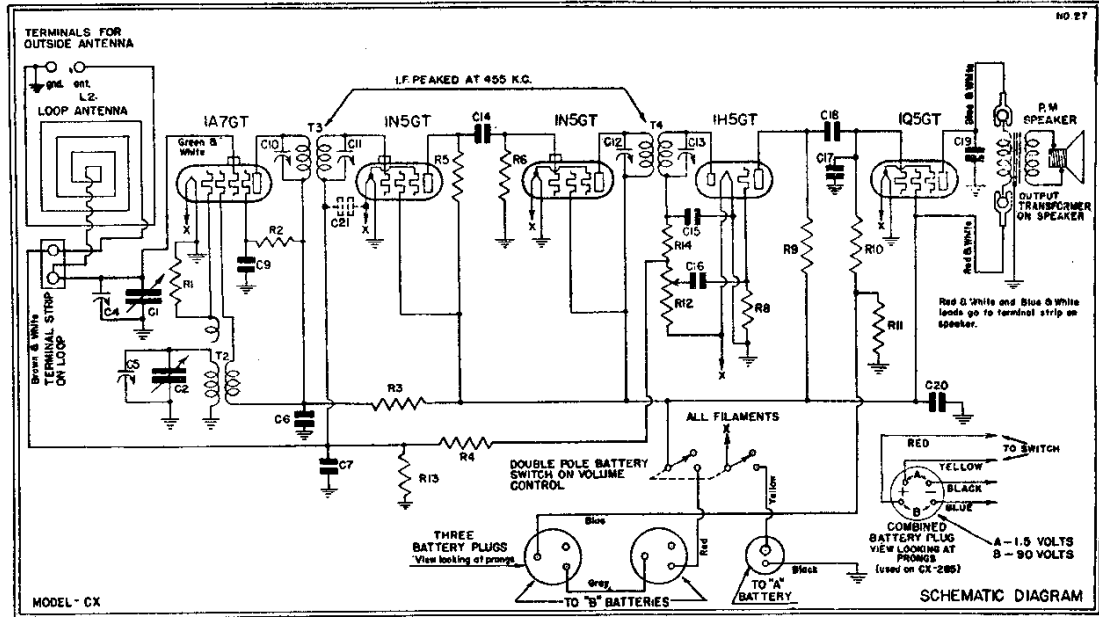
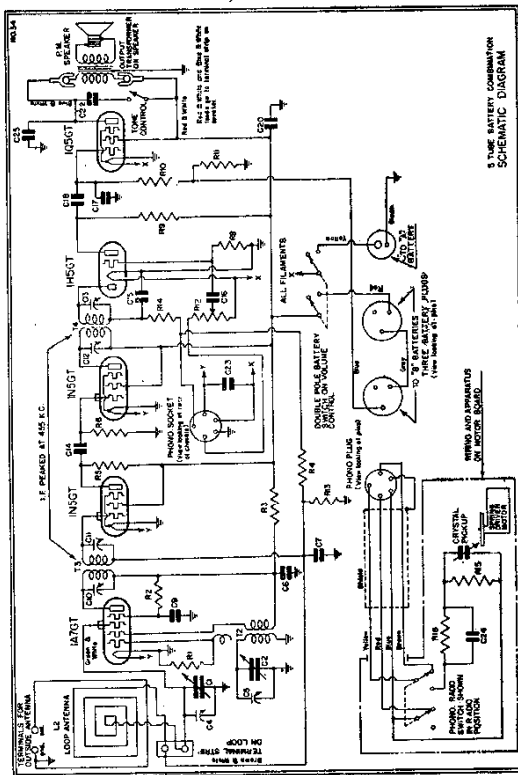


EMERSON RADIO & PHONOGRAPH CORP. MODELS CX263, CX283, CX284 CX285, CX305, CX292 Chassis CX (3 Types) Schematics

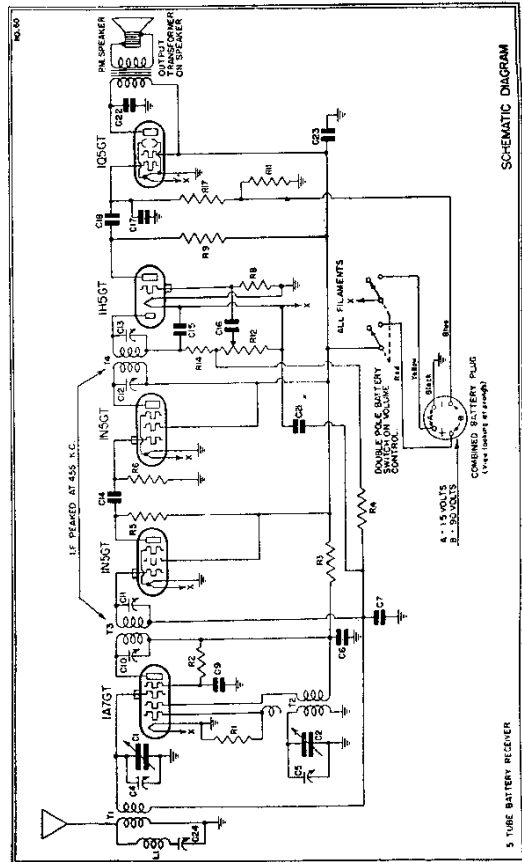


MODELS CX-263, 283, 284 and 305

Current drain ... "A" battery—0.3 amps.
 "B" battery—0.10 amps. with no signal
 Frequency range ... All Models except CX-285—540 to 1600 kc
 Model CX-285—540 to 1730 kc



MODEL CX-292



MODEL CX-285

July 15th, 1939