

SCP-7000F SPECIFICATIONS

TYPE:
20 Transistor, Stereo Cassette Tape Recorder with FM/MW/SW 3 Band Radio and phonograph

CIRCUIT:
Transistor 2SC535 (FM RF amplifier)
2SC461 (FM converter)
2SC460 (FM IF amplifier)
2SC460 (AM IF amplifier)
2SC460 (AM oscillator)
2SC460 x 2 (FM/AM IF amplifier)
2SC458 x 2 (AF amplifier)
2SB75 x 2 (AF amplifier)
2SB156A x 4 (power amplifier)
2SC458 x 4 (AF amplifier)
2SB77 (bias oscillator)
Diode 1N60 x 2 (FM detector)
1N34A (AM detector)
1N60 (FM AGC)
1N34A (AM AGC)
1N60 (FM limiter)
1N34A (rectifier)
CS47 x 2 (temperature compensation)

a. Radio

RATING:
Frequency Range .. FM 87 - 108MHz
MW 520 - 1605KHz
SW 6 - 18MHz
IF FM 10.7MHz
AM 455KHz
Output Power 1100 ± 200mW max.
800 ± 150mW usable
Power Source DC 9V, "D" battery x 6
AC 117/220V, 50/60Hz
Maximum Sensitivity FM 6 ± 6dB at 98MHz (dummy
(output=50mW, DC, antenna used)
power source) MW 30 ± 6dB at 1000KHz
SW 28 ± 6dB at 12MHz
Usable Sensitivity .. FM 13 ± 4dB at 98MHz (S/N=30dB)
(output=50mW, DC MW 40 ± 4dB at 1000KHz
power source) (S/N=10dB)
SW 33 ± 4dB at 12MHz (S/N=10dB)
S/N Ratio FM 50 ± 4dB at 98MHz
(input=28dB)
MW 30 ± 4dB at 1000KHz
(input=60dB)
SW 36 ± 4dB at 12MHz
(input=60dB)

Current Drain(DC) .No signal: 35 ± 7mA
Maximum output: 240 ± 40mA
Usable output: 210 ± 40mA
Current Drain(AC) .No signal: 13VA (AC 220V)
Under Voltage(DC) .4.5V
Under & Over
Voltage(AC)..... ± 10% of rated voltage

b. Phonograph

RATING:
Turntable Speed ... 33-1/3, 45 & 78rpm.
Frequency Response 100 - 10000Hz
S/N Ratio 35dB
Output Power 1000 ± 300mW max.
(DC power source) 800 ± 150mW usable
Power Source Same as radio
Current Drain(DC) .No signal : 75 ± 20mA
Maximum output: 470 ± 40mA
Usable output: 410 ± 40mA
Current Drain(AC) .No signal: 13VA(AC 220V)
Under Voltage(DC) .6.5V
Under & Over
Voltage(AC)..... ± 10% of rated voltage

c. Tape Recorder

RATING:
Recording System .. 4 track, 2 channel, stereo
Wow & Flutter Within 0.5% WRMS
Recording Time ... 60 min(30 min per track) on C-60
cassette
Rewind/Fast-wind
Time .. Within 70 sec.
Rated Input Level .. -75dB (1V=0dB)
Frequency Response 100 - 8000Hz
Output Power Same as radio
S/N Ratio More than 30dB(DC power source)
Current Drain(DC) .No signal recording: 130 ± 30mA
No signal playback: 120 ± 30mA
Rewind: 200 ± 40mA
Fast-wind: 230 ± 40mA

d. Others

Dimensions 13-3/8x18-1/8x5-5/8 in
Weight 15.4 lbs (without battery)

SCP-7000S SPECIFICATIONS

TYPE:
17 Transistor, Stereo Cassette Tape Recorder with MW/SW1/SW2 3 Band Radio and Phonograph

CIRCUIT:
Transistor 2SC460(2SC371)-frequency mixer
2SC460(CDC12000)-local oscillator
2SA12 (2SA49)-IF amplifier
2SA12 (2SA53)-IF amplifier
2SC458(CDC13000) x 2-AF amplifier
2SB75 (2SB54) x 2-AF amplifier
2SB156(2SB364) x 4-power amplifier
2SC458(CDC13000) x 4-playback amplifier
2SB77 (2SB56)-bias oscillator
Diode 1N34A(1N60)-detector
1N34A(1N60)-AGC
1N34A(1N60)-reter rectifier
CS47 x 2-temperature compensator

a. Radio

RATING:
Frequency Range .. MW 520 - 1605KHz
SW1 3 - 9MHz
SW2 9 - 23MHz
IF 455KHz
Output Power 850 ± 150mW usable
1300 ± 200mW max.
Power Source DC 9V, "D" battery x 6
AC 117/220V
Maximum Sensitivity MW 30 ± 8dB at 1000KHz
(output=50mW, DC SW1 30 ± 8dB at 6MHz
power source) SW2 13 ± 8dB at 16MHz
Usable Sensitivity .. MW 39 ± 6dB at 1000KHz
(output=50mW, DC SW1 32 ± 6dB at 6MHz
power source, SW2 14 ± 6dB at 16MHz
S/N=10dB)
S/N Ratio MW 32 ± 6dB at 1000KHz
(DC power source) (input=60dB)
SW1 35 ± 6dB at 6MHz
(input=60dB)

SW2 36 ± 6dB at 16MHz
(input=44dB)

Current Drain(DC) .No signal: 33 ± 7mA
Maximum output: 260 ± 40mA
Usable output : 220 ± 40mA
Under Voltage(DC) .4.5V
Under & Over
Voltage(AC) ± 10% of rated voltage

b. Phonograph

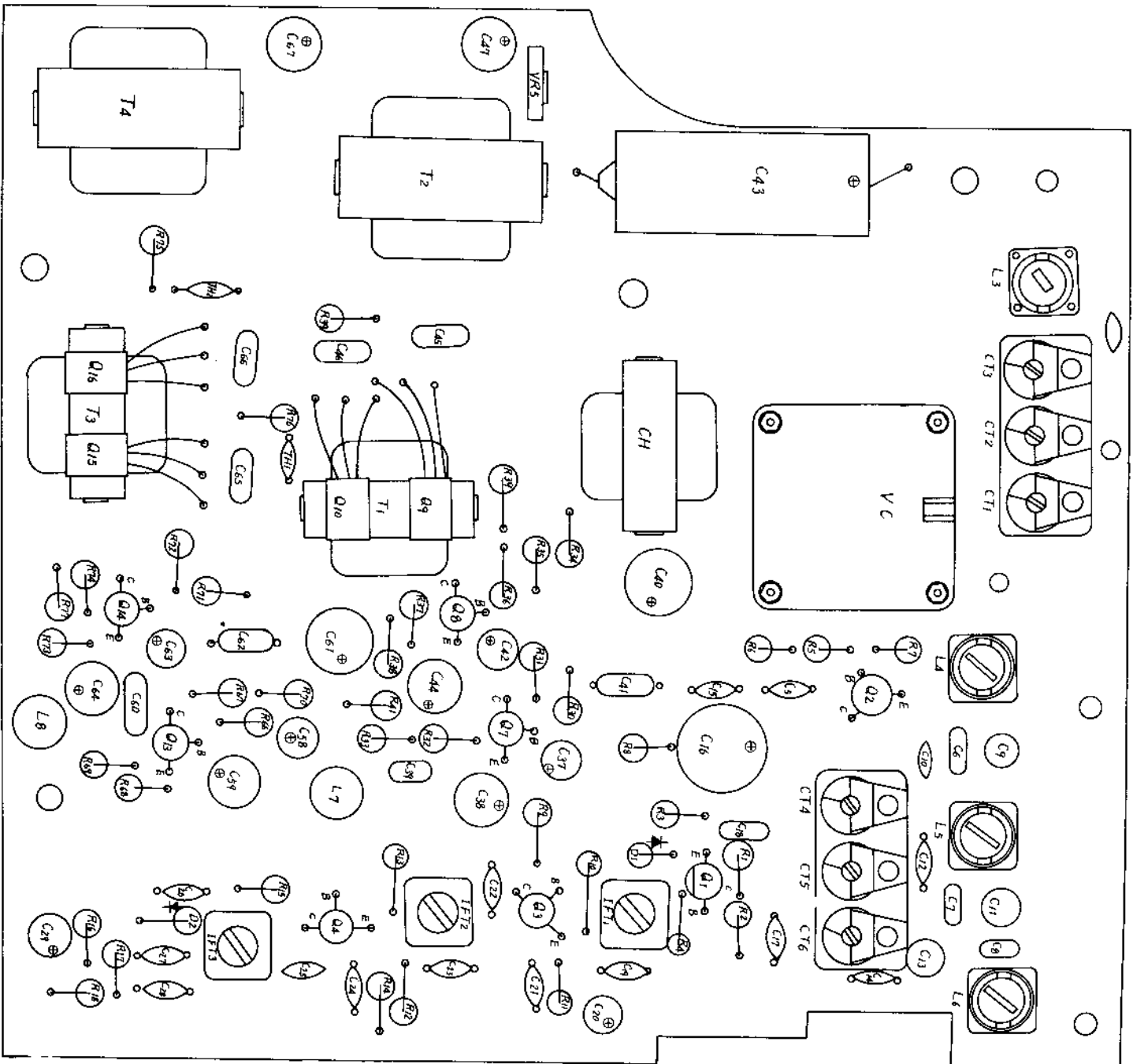
RATING:
Turntable Speed ... 33-1/4, 45 & 78rpm.
Frequency Response 100-10000Hz
S/N Ratio 35dB
Output Power 850 ± 150mW usable
(DC power source) 1000 ± 300mW max.
Power Source same as radio
Current Drain(DC) .No signal: 75 ± 20mA
Maximum output: 470 ± 40mA
Usable output : 430 ± 40mA
Under Voltage(DC) .6.5V
Under & Over
Voltage(AC) ± 10% of rated voltage

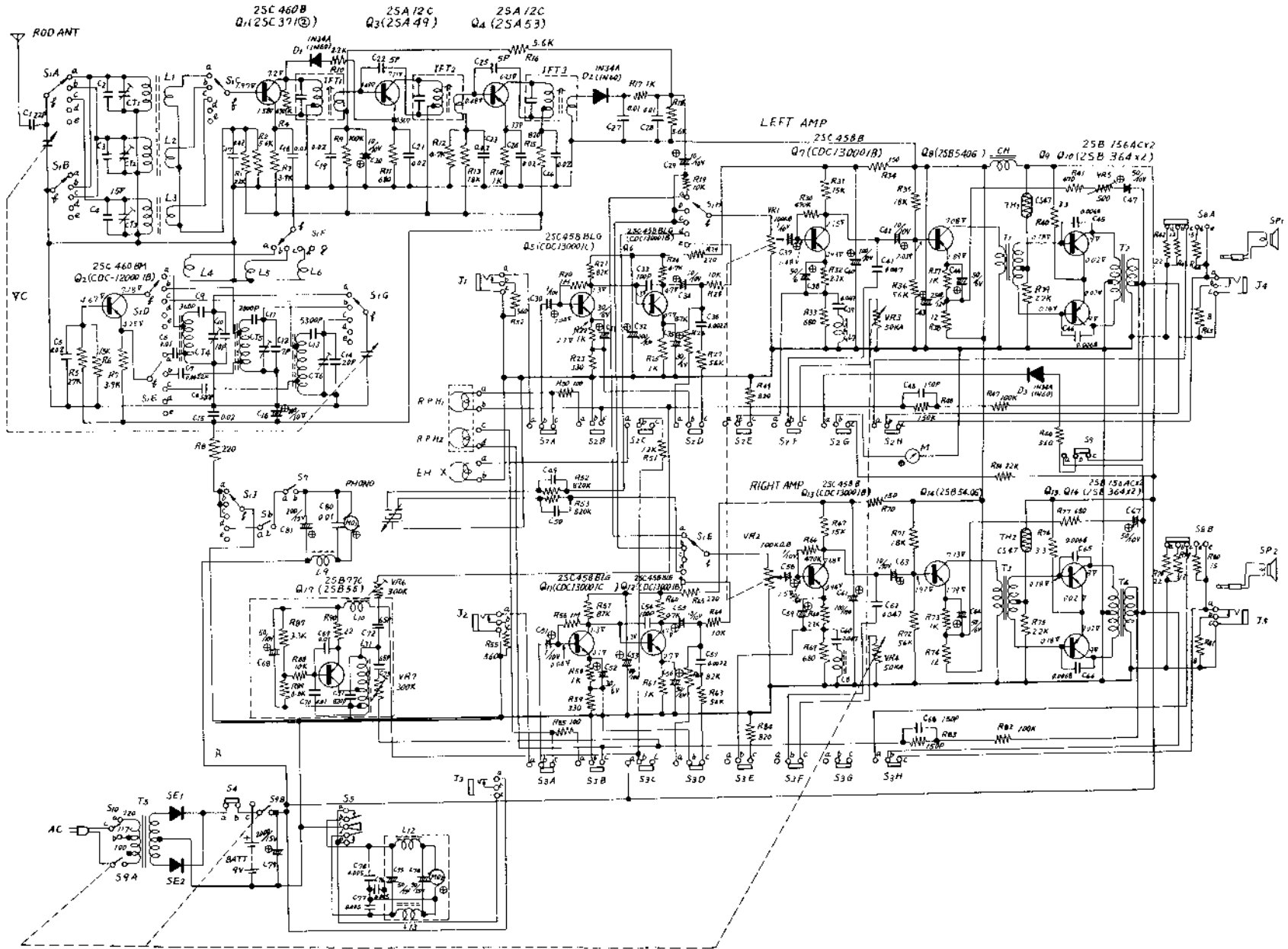
c. Tape Recorder

RATING:
Recording System .. 4 track, 2 channel, stereo
Wow & Flutter Within 0.5% WRMS
Recording Time ... 60 min(30 min per track) on C-60
cassette
Rated Input Level .. -75dB
Frequency Response 100 - 8000Hz
Output Power Same as radio
S/N Ratio(DC) Better than 30dB
Current Drain(DC) .No signal recording: 130 ± 30mA
No signal playback: 130 ± 30mA
Rewinding: 200 ± 40mA

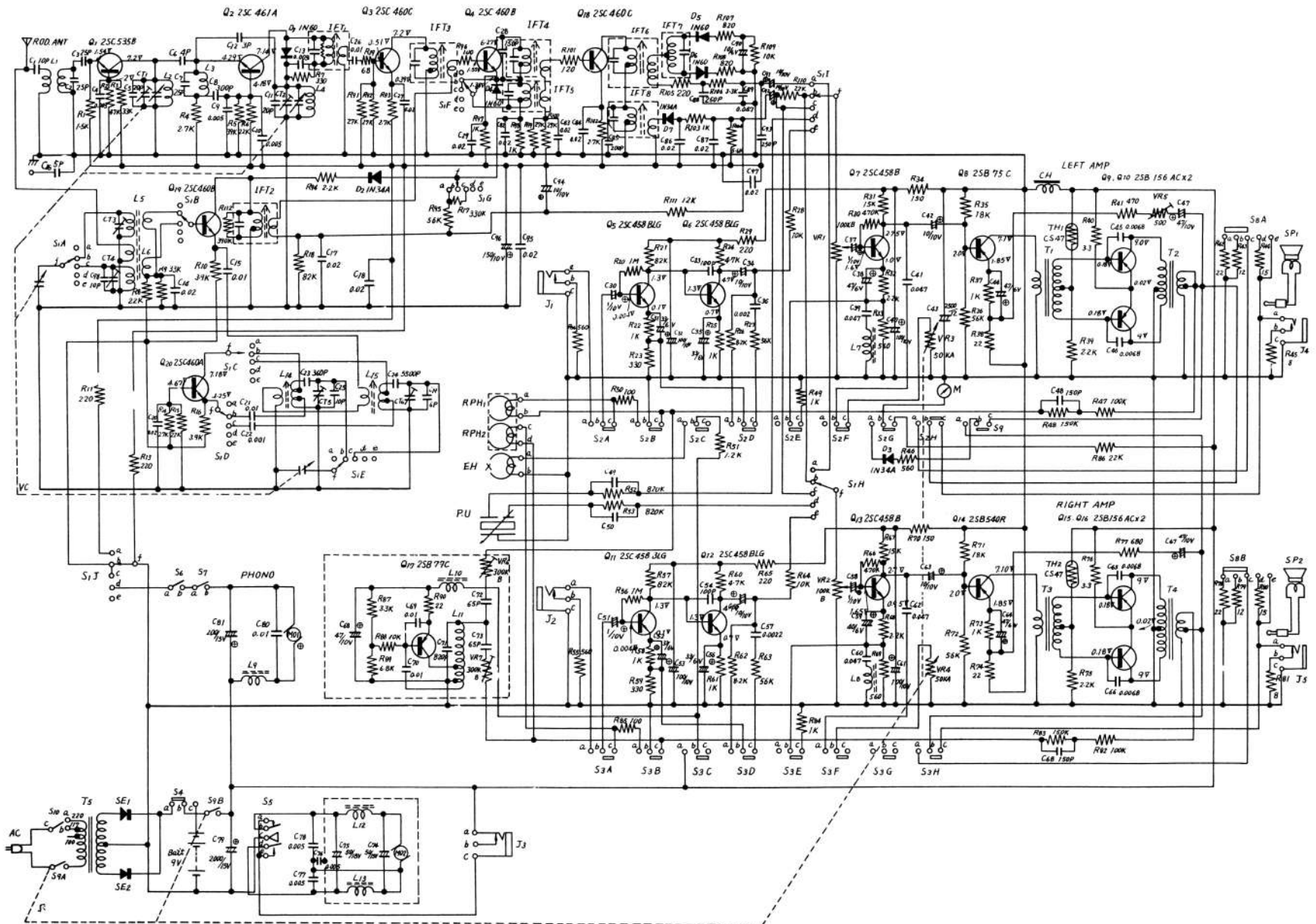
d. Others

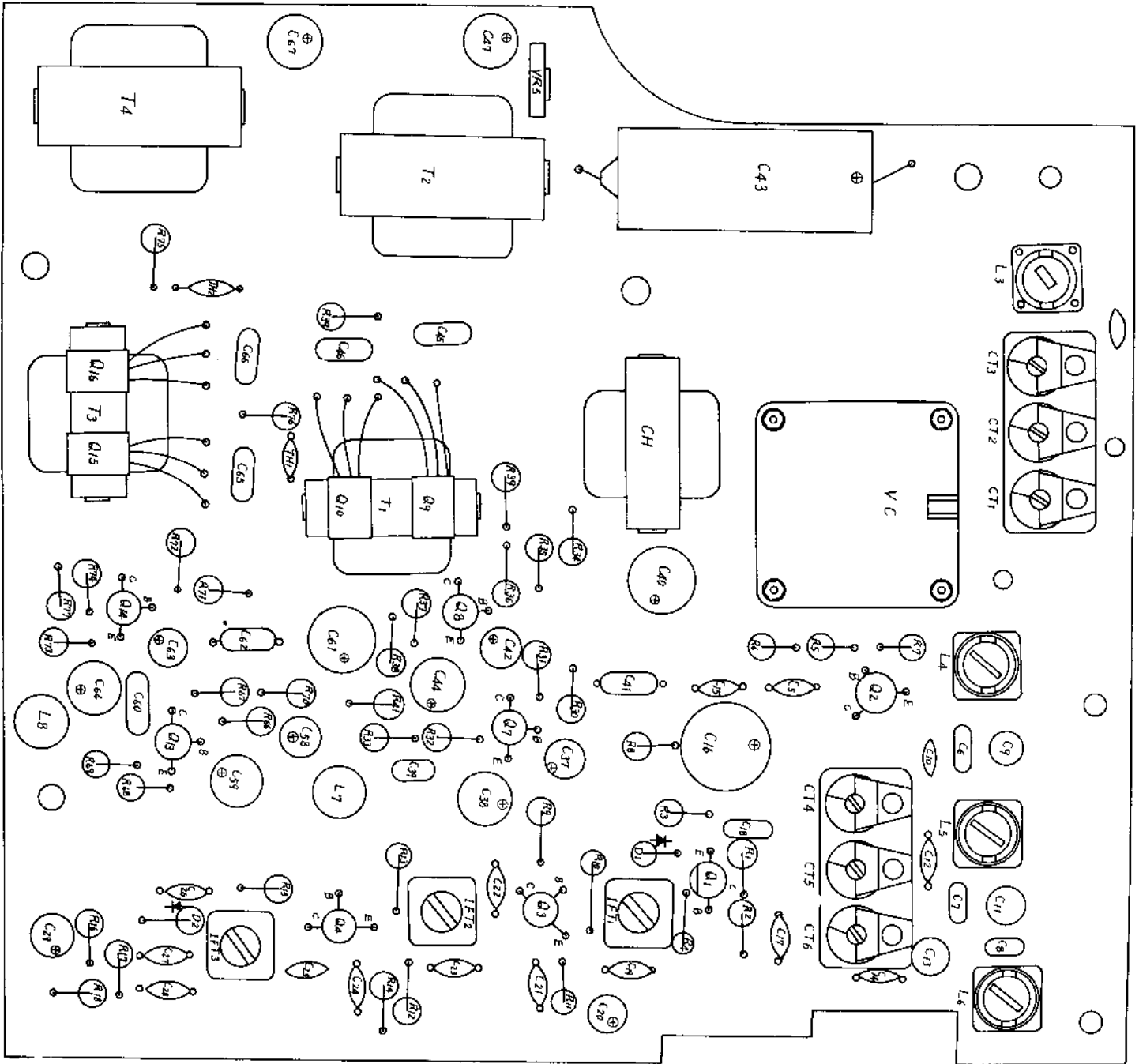
Dimensions 13-3/8x18-1/8x5-5/8 in
Weight 15.4 lbs (without battery)

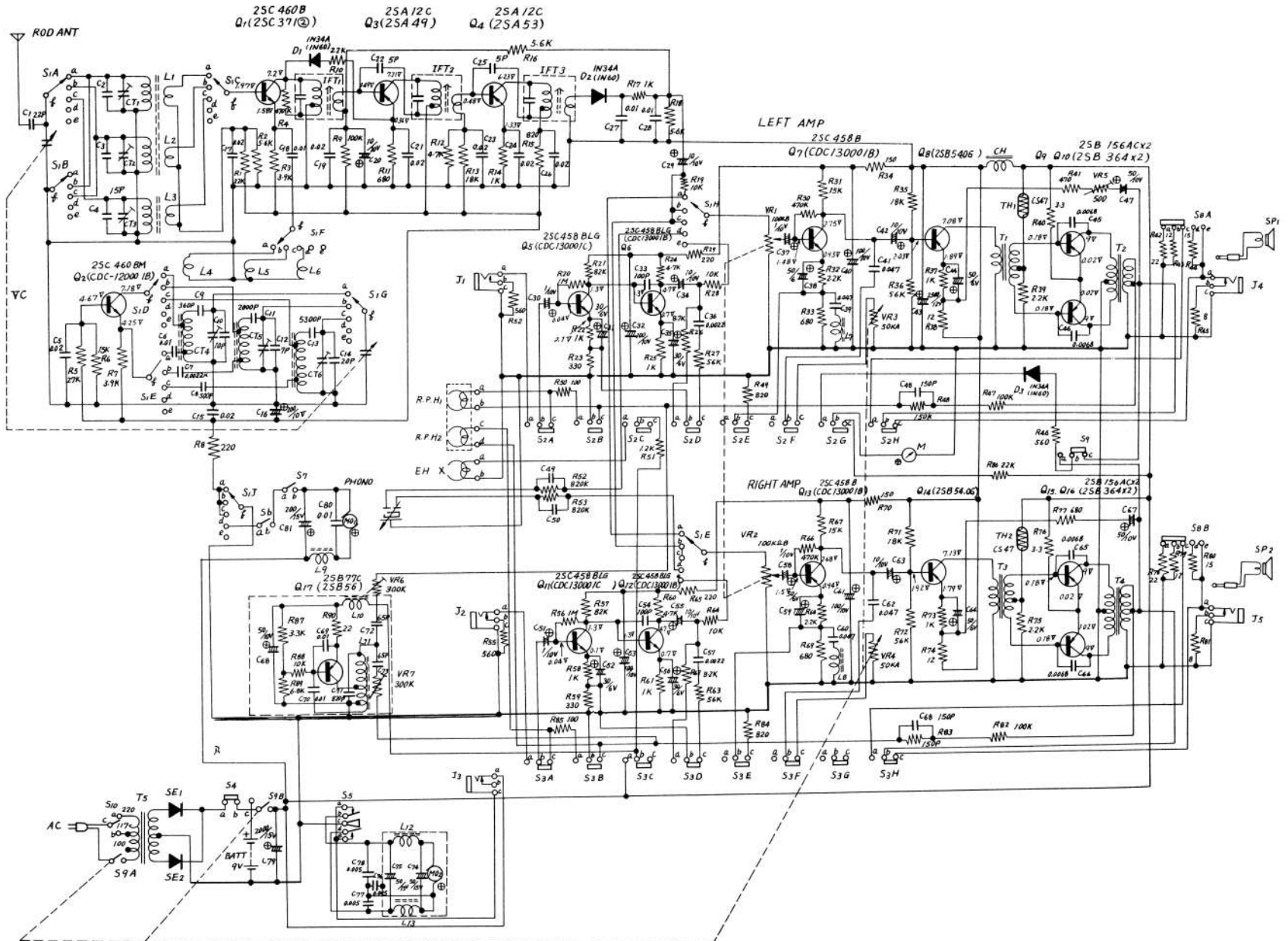




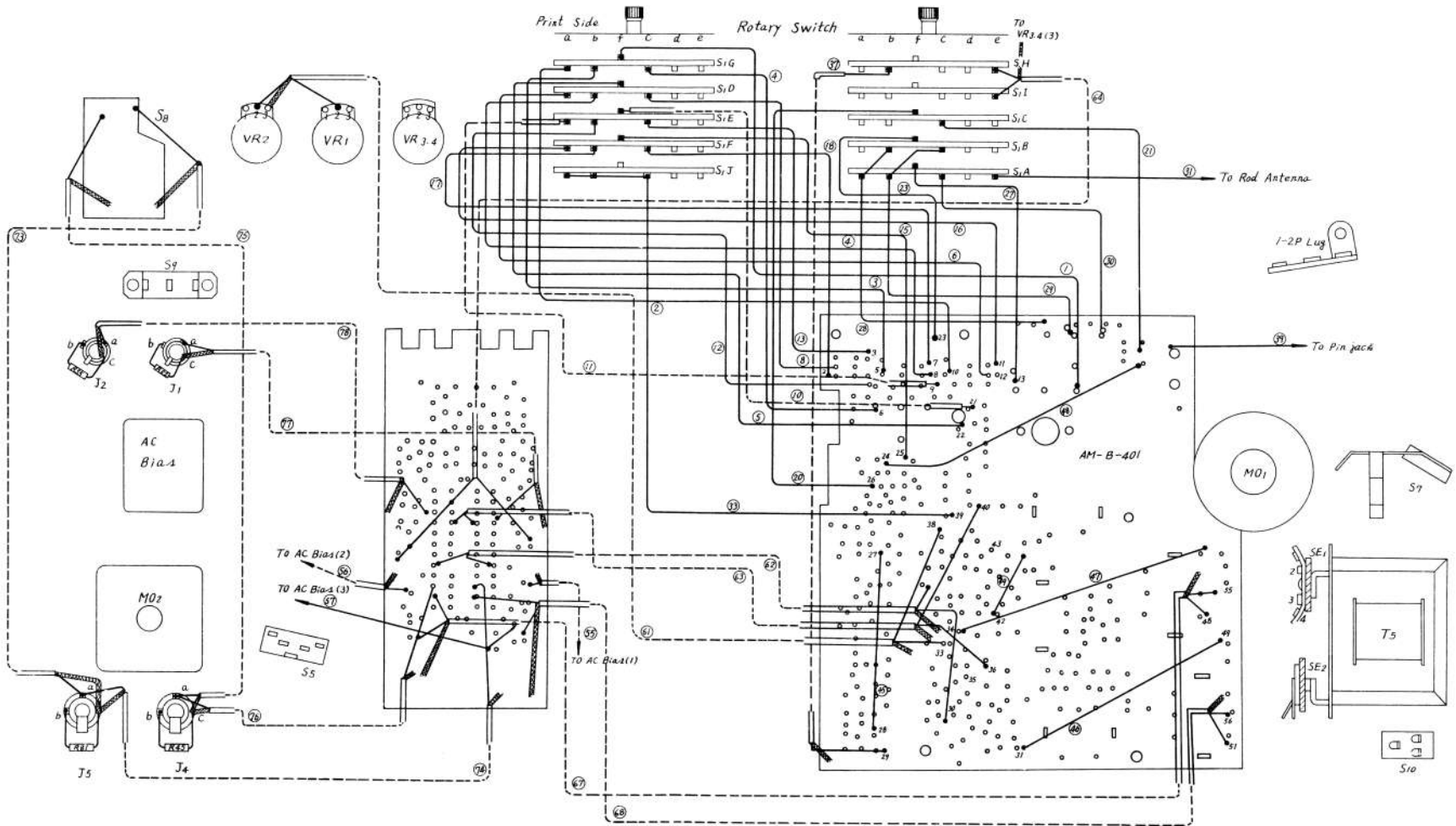
SCP-7000F CIRCUIT DIAGRAM







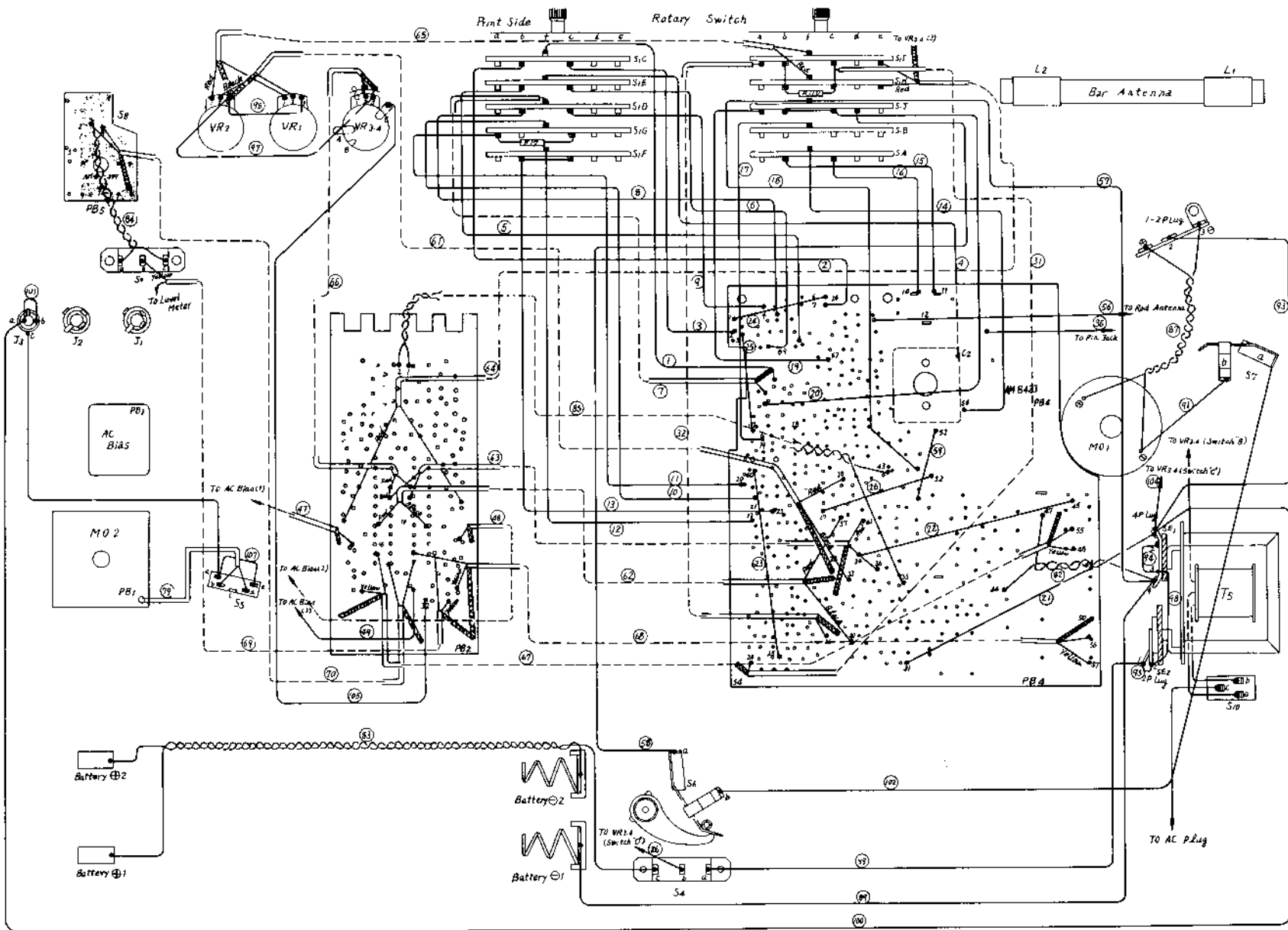
SCP-7000S LEAD CONNECTIONS



Those leads not shown here refer to the Lead Connections

Diagram of SCP-7000F.

SPC-7000F LEAD CONNECTION



SCP-7000F SPECIFICATIONS

TYPE:	
20 Transistor, Stereo Cassette Tape Recorder with FM/MW/SW 3 Band Radio and Phonograph	
CIRCUIT:	
Transistor	2SC535 (FM RF amplifier) 2SC461 (FM converter) 2SC460 (FM IF amplifier) 2SC460 (AM IF amplifier) 2SC460 (AM oscillator) 2SC460 x 2 (FM/AM IF amplifier) 2SC458 x 2 (AF amplifier) 2SB75 x 2 (AF amplifier) 2SB156A x 4 (power amplifier) 2SC458 x 4 (AF amplifier) 2SB77 (bias oscillator)
Diode	1N60 x 2 (FM detector) 1N34A (AM detector) 1N60 (FM AGC) 1N34A (AM AGC) 1N60 (FM limiter) 1N34A (rectifier) CS47 x 2 (temperature compensation)
a. Radio	
RATING:	
Frequency Range	FM 87 - 108MHz MW 520 - 1605KHz SW 6 - 18MHz
IF	FM 10.7MHz 4M 455KHz
Output Power	1100 ± 200mW max. 800 ± 150mW usable
Power Source	DC 9V, "D" battery x 6 AC 117/220V, 50/60Hz
Maximum Sensitivity	FM 6 ± 6dB at 98MHz (dummy antenna used) MW 30 ± 6dB at 1000KHz SW 28 ± 6dB at 12MHz
Usable Sensitivity	FM 13 ± 4dB at 98MHz (S/N=30dB) MW 40 ± 4dB at 1000KHz (S/N=10dB)
S/N Ratio	FM 33 ± 4dB at 12MHz (S/N=10dB) MW 50 ± 4dB at 98MHz (input 28dB) MW 30 ± 4dB at 1000KHz (input -60dB) SW 36 ± 4dB at 12MHz (input -60dB)

Current Drain(DC)	No signal: 35 ± 7mA Maximum output: 240 ± 40mA Usable output: 210 ± 40mA
Current Drain(AC)	No signal: 13VA (AC 220V)
Under Voltage(DC)	.4, 5V
Under & Over Voltage(AC)	±10% of rated voltage
b. Phonograph	
RATING:	
Turntable Speed	33-1/3, 45 & 78rpm.
Frequency Response	100 - 10000Hz
S/N Ratio	35dB
Output Power	1000 ± 300mW max. (DC power source) 800 ± 150mW usable
Power Source	Same as radio
Current Drain(DC)	No signal: 75 ± 20mA Maximum output: 470 ± 40mA Usable output: 410 ± 40mA
Current Drain(AC)	No signal: 13VA (AC 220V)
Under Voltage(DC)	.6, 5V
Under & Over Voltage(AC)	±10% of rated voltage

c. Tape Recorder	
RATING:	
Recording System	.4 track, 2 channel, stereo
Wow & Flutter	Within 0.5% WRMS
Recording Time	60 min (30 min per track) on C-60 cassette
Rewind/Fast-wind Time	Within 70 sec.
Rated Input Level	-75dB (1V=0dB)
Frequency Response	100 - 8000Hz
Output Power	Same as radio
S/N Ratio	More than 30dB (DC power source)
Current Drain(DC)	No signal recording: 130 ± 40mA No signal playback: 120 ± 30mA Rewind: 200 ± 40mA Fast-wind: 230 ± 40mA
d. Others	
Dimensions	13-3/8x18-1/8x5-5/8 in
Weight	15.4 lbs (without battery)

SCP-7000S SPECIFICATIONS

TYPE:	
17 Transistor, Stereo Cassette Tape Recorder with MW/SW1/SW2 3 Band Radio and Phonograph	
CIRCUIT:	
Transistor	2SC460(2SC371)-frequency mixer 2SC460(CDC12000)-local oscillator 2SA12 (2SA49)-IF amplifier 2SA12 (2SA53)-IF amplifier 2SC458(CDC13000) x 2-AF amplifier 2SB75 (2SB94) x 2-AF amplifier 2SB156(2SB364) x 4-power amplifier 2SC458(CDC13000) x 4-playback amplifier 2SB77 (2SB56)-bias oscillator
Diode	1N34A(1N60)-detector 1N34A(1N60)-AGC 1N34A(1N60)-reter rectifier CS47 x 2-temperature compensator
a. Radio	
RATING:	
Frequency Range	MW 520 - 1605KHz SW1 3 - 9MHz SW2 9 - 23MHz
IF	455KHz
Output Power	850 ± 150mW usable 1300 ± 200mW max.
Power Source	DC 9V, "D" battery x 6 AC 117/220V
Maximum Sensitivity	MW 30 ± 8dB at 1000KHz (output=50mW, DC power source) SW2 13 ± 8dB at 16MHz Usable Sensitivity MW 39 ± 6dB at 1000KHz (output=50mW, DC power source) SW1 32 ± 6dB at 6MHz SW2 14 ± 6dB at 16MHz
S/N=10dB	
S/N Ratio	MW 32 ± 6dB at 1000KHz (DC power source) SW1 35 ± 6dB at 6MHz (input -60dB) SW2 36 ± 6dB at 16MHz (input -60dB)

TYPE:	
SW2 36 ± 6dB at 16MHz (input=44dB)	
Current Drain(DC)	
No signal: 33 ± 7mA Maximum output: 260 ± 40mA Usable output: 220 ± 40mA	
Under Voltage(DC)	
.4, 5V	
Under & Over Voltage(AC)	
±10% of rated voltage	
b. Phonograph	
RATING:	
Turntable Speed	33-1/4, 45 & 78rpm.
Frequency Response	100-10000Hz
S/N Ratio	35dB
Output Power	850 ± 150mW usable (DC power source) 1000 ± 300mW max.
Power Source	Same as radio
Current Drain(DC)	No signal: 75 ± 20mA Maximum output: 470 ± 40mA Usable output: 430 ± 40mA
Under Voltage(DC)	.6, 5V
Under & Over Voltage(AC)	±10% of rated voltage
c. Tape Recorder	
RATING:	
Recording System	.4 track, 2 channel, stereo
Wow & Flutter	Within 0.5% WRMS
Recording Time	60 min (30 min per track) on C-60 cassette
Rated Input Level	-75dB
Frequency Response	100 - 8000Hz
Output Power	Same as radio
S/N Ratio(DC)	Better than 30dB
Current Drain(DC)	No signal recording: 130 ± 30mA No signal playback: 130 ± 30mA Rewinding: 200 ± 40mA
d. Others	
Dimensions	13-3/8x18-1/8x5-5/8 in
Weight	15.4 lbs (without battery)

SCP-7000F CIRCUIT DIAGRAM

