

ICF-M750L

SERVICE MANUAL

AEP Model
UK Model



SPECIFICATIONS

Frequency range

FM	87.5–108 MHz (0.05 MHz scan step)
MW	531–1,602 kHz (9 kHz scan step) 530–1,610 kHz (10 kHz scan step)
LW	153–279 kHz (9 kHz scan step)

Intermediate frequency

FM : 10.7 MHz
MW/LW: 450 kHz

Antennas

FM : Telescopic antenna
MW/LW: Built-in ferrite bar antenna

Speaker

Approx. 9.2 cm (3⁵/₈ inches) dia.

Power output

400 mW (at 10% harmonic distortion)

Output

Earphone jack (minijack)

Power requirements

240 V AC, 50 Hz (U.K. model)
220 – 230 V AC, 50 Hz (models for other countries)

Battery life

6 V DC, four R6 (size AA) batteries
Approx. 17 hours of listening for 4 hours a day at a normal volume using Sony batteries SUM-3 (NS)

Dimensions

Approx. 240 × 115 × 58 mm (w/h/d)
(Approx. 9¹/₂ × 4⁵/₈ × 2³/₈ inches)

Weight

not incl. projecting parts and controls
Approx. 870 g (30.7 oz) incl. batteries

Accessories supplied AC power cord (1)
FM antenna coupler *(1) (Models for Switzerland and Belgium)

Design and specifications subject to change without notice.

Note

This appliance conforms with EEC Directive 87/308/EEC regarding interference suppression.

SAFETY-RELATED COMPONENT WARNING!!

COMPONENTS IDENTIFIED BY MARK Δ OR DOTTED LINE WITH MARK Δ ON THE SCHEMATIC DIAGRAMS AND IN THE PARTS LIST ARE CRITICAL TO SAFE OPERATION. REPLACE THESE COMPONENTS WITH SONY PARTS WHOSE PART NUMBERS APPEAR AS SHOWN IN THIS MANUAL OR IN SUPPLEMENTS PUBLISHED BY SONY.

FM/MW/LW 3 BAND
PLL SYNTHESIZED RECEIVER
SONY[®]



**SECTION 1
GENERAL**

This section is extracted from instruction manual.

Note on the MW tuning interval

The MW tuning interval differs depending on areas. The tuning interval of this unit is factory-set to 10 kHz or to 9 kHz to match the frequency allocation system of the country as listed. You can change the interval.

Area	MW tuning interval
North American countries	10 kHz
Other countries	9 kHz

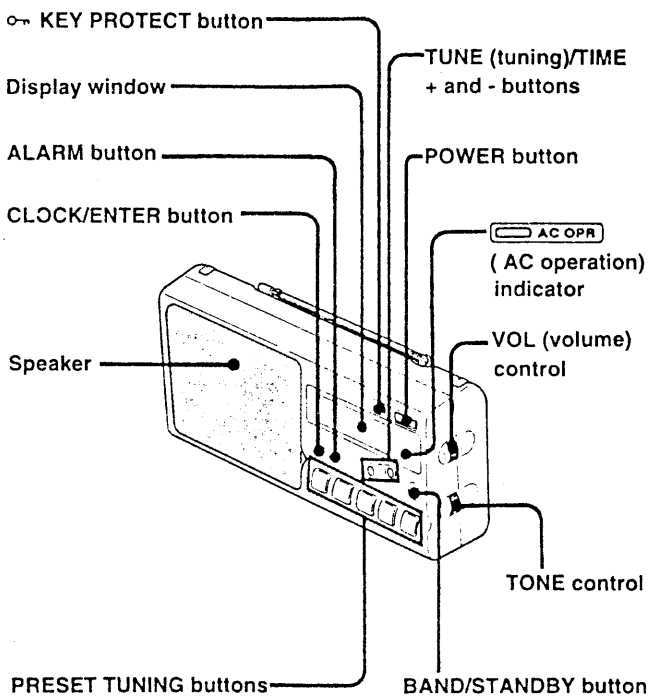
If you have any question or problem concerning your unit that is not covered in this manual, please consult your nearest Sony dealer.

Features

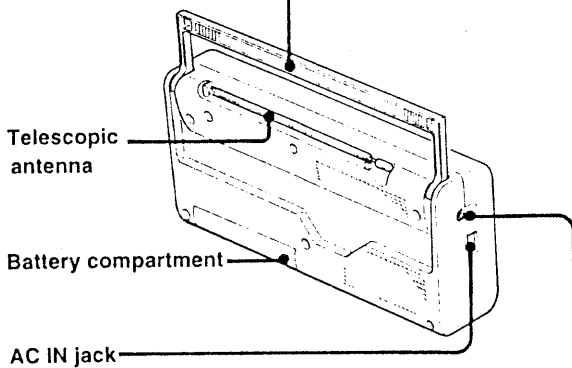
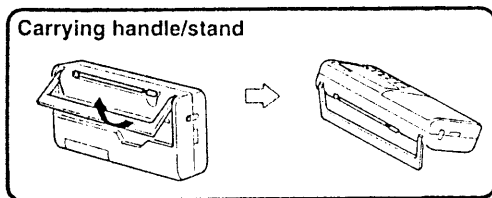
- A quartz-controlled PLL(Phase Locked Loop) synthesizer system using a microcomputer for easy pinpoint tuning.
- Up to 5 stations in each band can be preset.
- The tuned frequency is digitally displayed to make searching of the desired station easier.
- The radio can be turned on at the preset time.

Location of Controls

Front panel



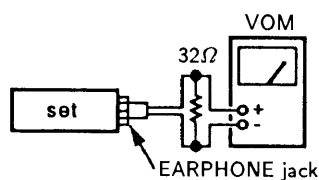
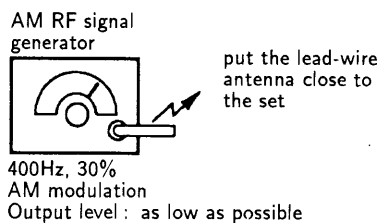
Rear panel



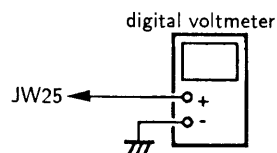
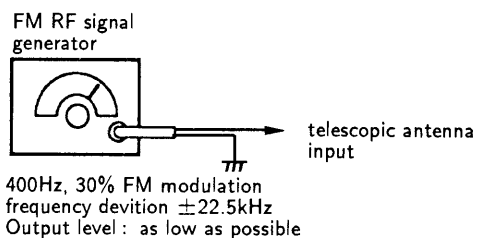
Ⓢ Earphone jack
When the earphone is plugged in, the sound does not come out from the speaker.

SECTION 2 ADJUSTMENTS

AM SECTION



FM SECTION



- Repeat the procedures in each adjustment several times, and the frequency coverage and tracking adjustments should be finally done by the trimmer capacitors.

AM IF ADJUSTMENT	
Adjust for a maximum reading on VOM.	
T1	450 kHz

MW FREQUENCY COVERAGE ADJUSTMENT		
Adjustment Part	Frequency Display	Reading on Digital Voltmeter
CT4	1602 kHz	8 ± 0.1 V
L11	531 kHz	1.50 ± 0.05 V

Note: Not use the AM RF signal generator in this adjustment.

MW TRACKING ADJUSTMENT	
Adjust for a maximum reading on VOM.	
L8(MW)	621 kHz
CT2	1395 kHz

LW FREQUENCY COVERAGE ADJUSTMENT		
Adjustment Part	Frequency Display	Reading on Digital Voltmeter
CT5	279 kHz	6.8 ± 0.1 V
—	153 kHz	Confirm about 0.9V

Note: Not use the AM RF signal generator in this adjustment.

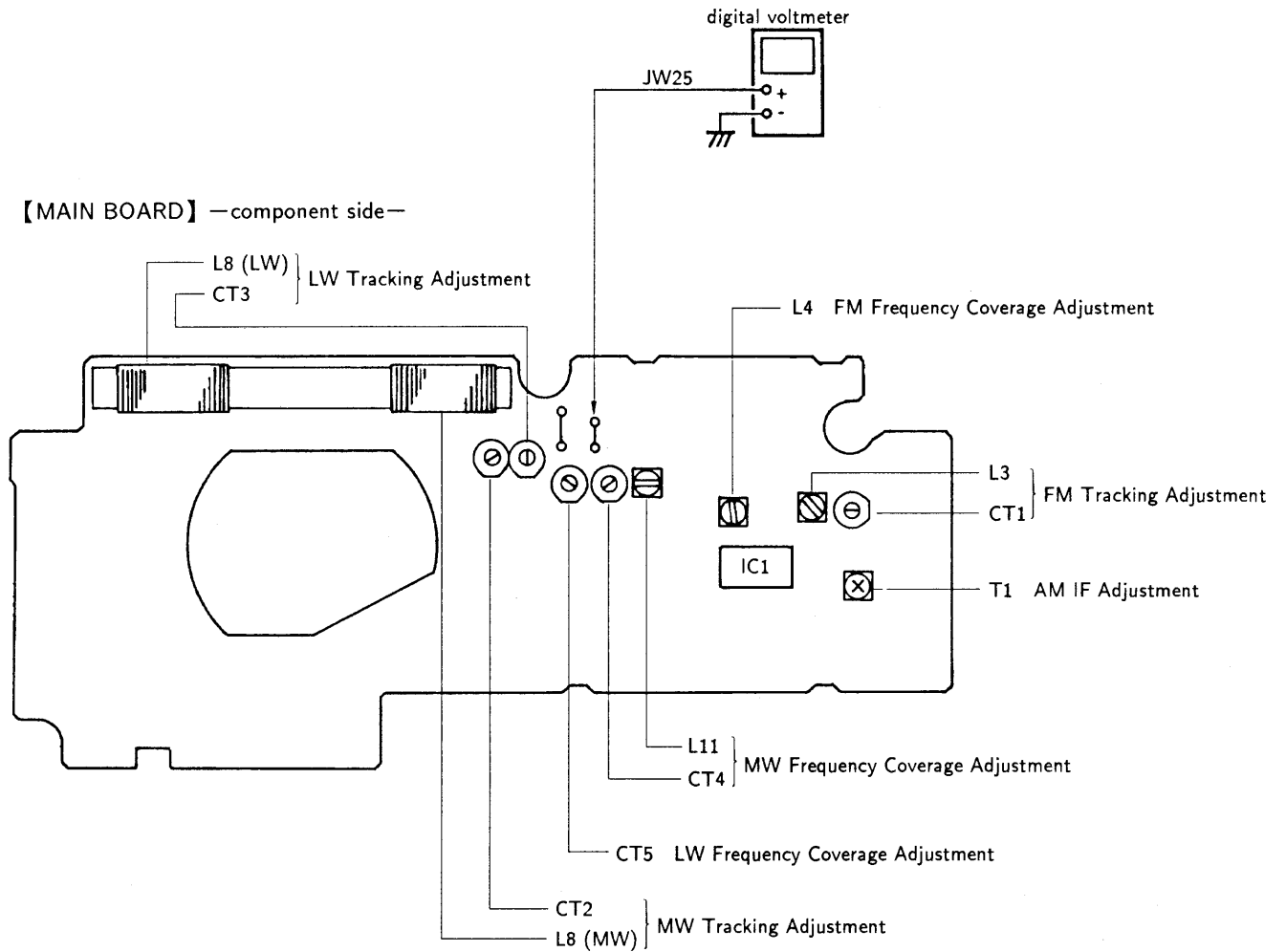
LW TRACKING ADJUSTMENT	
Adjust for a maximum reading on VOM.	
L8(LW)	171 kHz
CT3	252 kHz

FM FREQUENCY COVERAGE ADJUSTMENT		
Adjustment Part	Frequency Display	Reading on Digital Voltmeter
L4	108 MHz	8 ± 0.1 V
—	87.5 MHz	Confirm about 1.25V

Note: Not use the FM RF signal generator in this adjustment.

FM TRACKING ADJUSTMENT	
Adjust for a maximum reading on VOM.	
L3	87.5 MHz
CT1	108 MHz

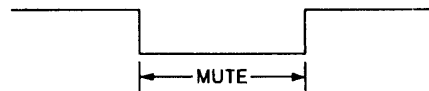
Adjustment Location



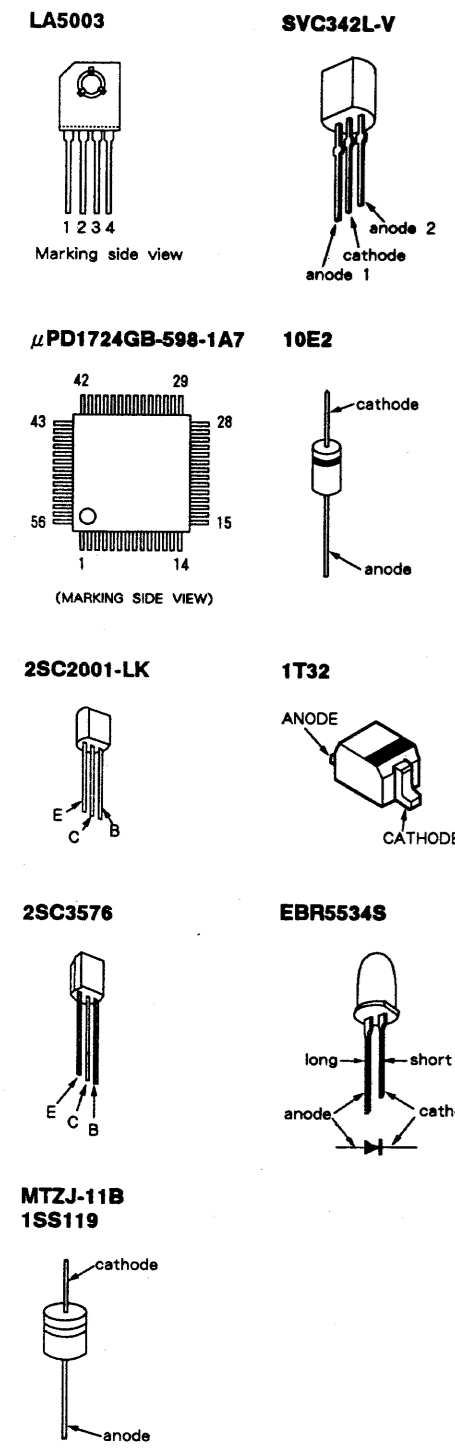
SECTION 3 DIAGRAMS

3-1. IC PIN FUNCTION

IC101 μ PD1724GB-598-1A7

Pin No.	Pin Name	Signal Name	I/O	Description
1-10	LCD10-LCD1	LCD10-LCD1	O	LCD drive
11	NC		—	
12-14	COM3-COM1	COM3-COM1	O	LCD common
15	VSS3			Pin for doubler circuit capacitor connection to develop LCD drive voltage.
16	CAP2		—	
17	CAP1			
18	VSS2			
19	VDP	$\overline{\text{MUTE}}$	O	Audio signal mute. Active : Low. LOW when MUTE ON. 
20	CGP	BEEP	O	Activates buzzer.
21	NC		—	
22	VDD		—	3V power supply input terminal.
23	VCOH		I	TV VCO input.
24	VCOM	FM VCO	I	FM VCO input.
25	VCOL	AM VCO	I	AM VCO input.
26	VSS1		—	GND
27	EO1		O	PLL error output pin.
28	EO2			
29	CE	CE	I	Detects power supply line status. Power supply line OFF : Low Power supply line ON : High
30	XO		O	Crystal oscillator connection pin.
31	XI		I	
32	VSS4		—	Pin for regulator circuit capacitor connection to attain stable drive voltage of the oscillator.
33	PA3	AC/DC	I	AC/DC select input AC : High DC : Low
34	PA2	BAND SELECT2	O	Unused pin
35	PA1	BAND SELECT1	O	Unused pin
36	PA0	BATT/BAND 1	I/O	BATTERY CHECK input, BAND output FM : Low MW/LW : High
37	PB3	LIGHT	O	Unused pin
38	PB2	POWER	O	RADIO POWER ON/ $\overline{\text{OFF}}$
39	PB1	INITIALIZE	O	SW,TV/ MW,FM
40	PB0	BAND 2	O	BAND output
41-44	PC3-PC0	KEY SOURCE	O	Conducts Key Scan
45-48	K3-K0	KEY RETURN	I	Key Return input
49,50	NC		—	
51-56	LCD16-LCD11	LCD16-LCD11	O	LCD drive

3-2. SEMICONDUCTOR LEAD LAYOUTS



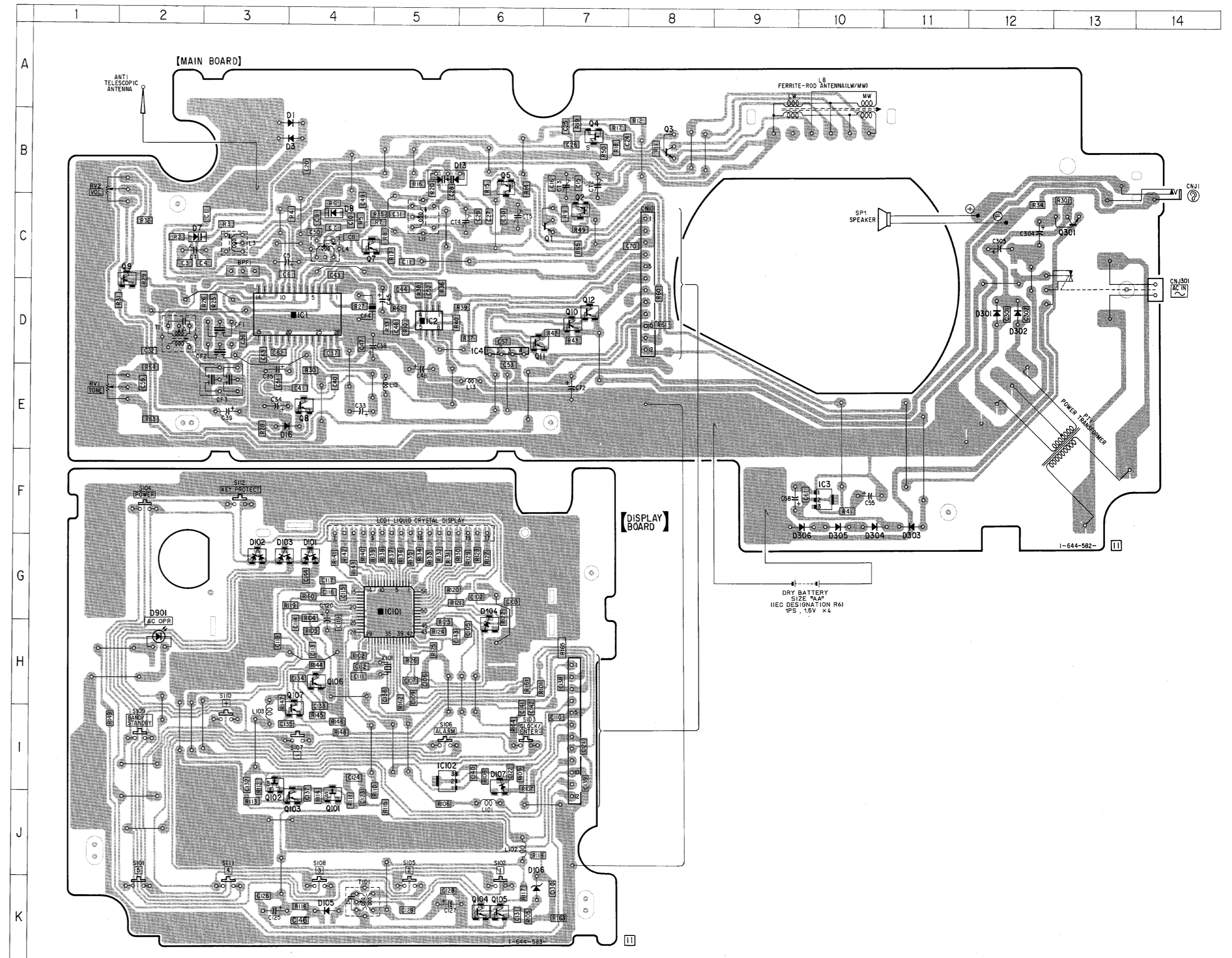
3-3. PRINTED WIRING BOARDS

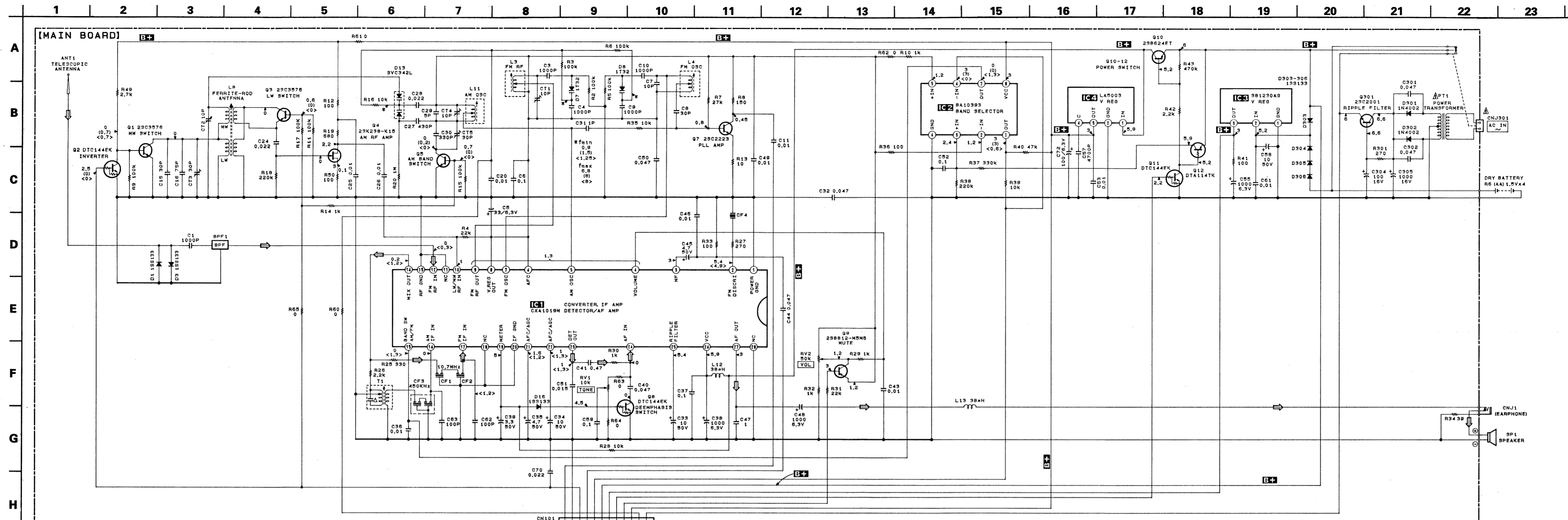
● SEMICONDUCTOR LOCATION

Ref.No.	LOCATION	Ref.No.	LOCATION
D1	B-4	IC102	I-5
D3	B-4		
D7	C-2	Q1	C-7
D8	C-4	Q2	C-7
D13	B-5	Q3	B-8
		Q4	B-7
D16	E-4	Q5	B-6
D101	G-4		
D102	G-3	Q7	C-5
D103	G-3	Q8	E-4
D104	H-6	Q9	C-2
		Q10	D-7
		Q11	D-7
D105	K-4		
D106	K-6		
D107	I-6	Q12	D-7
D301	D-12	Q101	J-4
D302	D-12	Q102	J-3
		Q103	J-4
		Q104	K-6
D303	F-11		
D304	F-10		
D305	F-10	Q105	K-6
D306	F-10	Q106	H-4
D901	H-2	Q107	I-4
		Q301	C-13
IC1	D-4		
IC2	D-5		
IC3	F-10		
IC4	D-6		
IC101	G-5		

Notes on printed wiring board:

- : Indicated a lead wire mounted on the component side
- : Indicated a lead wire mounted on the conductor side
- : Parts mounted on the conductor side
- ▨ : Pattern from the side which enables seeing





Notes on schematic diagram:

- All capacitors are in μF unless otherwise noted. μF : μF 50WV or less are not indicated except for electrolytics and tantalums.
- All resistors are in ohms, 1/4W or less unless otherwise noted.
- Δ : Internal component

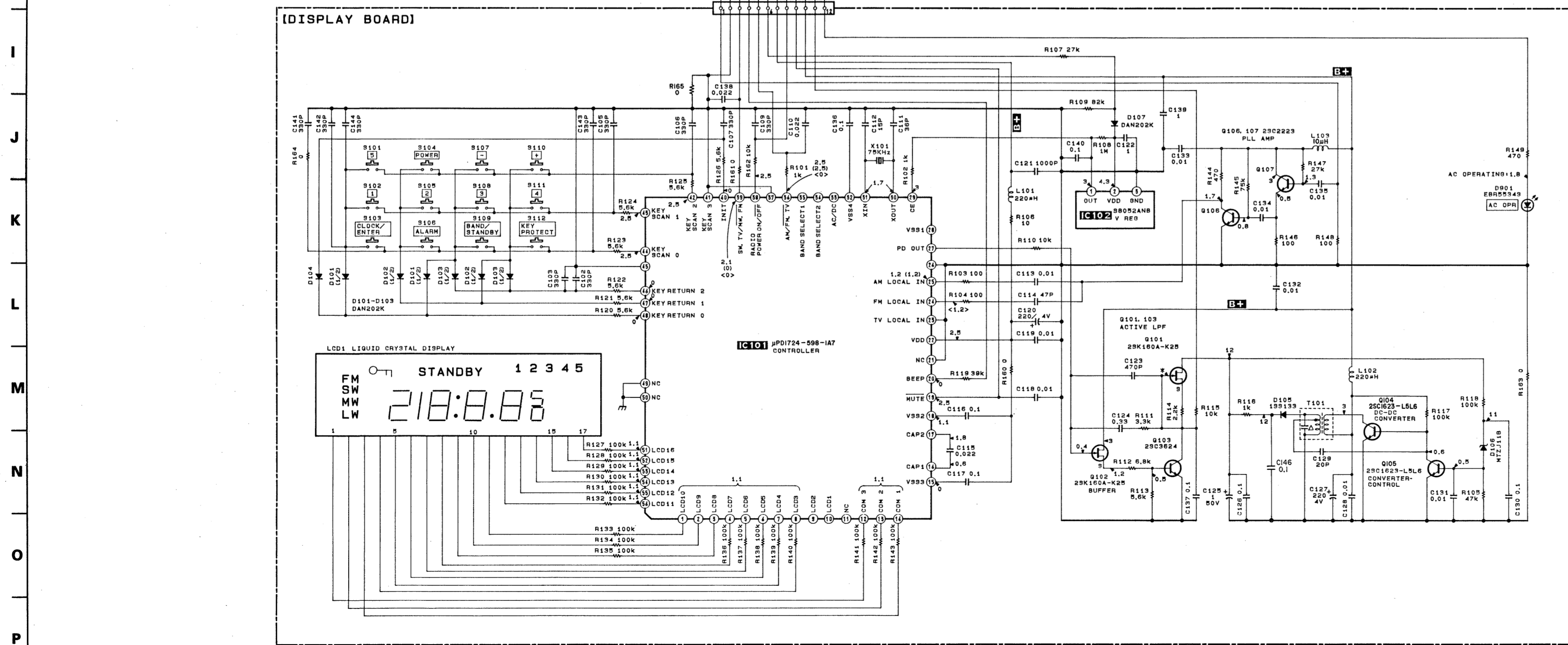
The components identified by mark Δ or dotted line with mark Δ are critical for safety. Replace only with part number specified.

Legend:

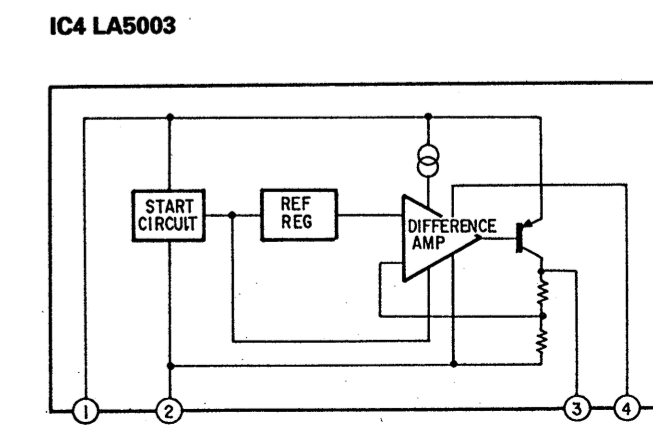
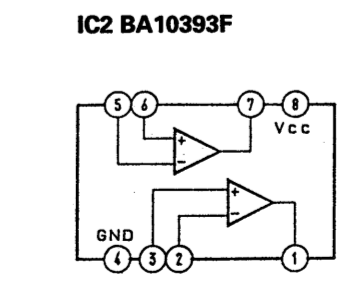
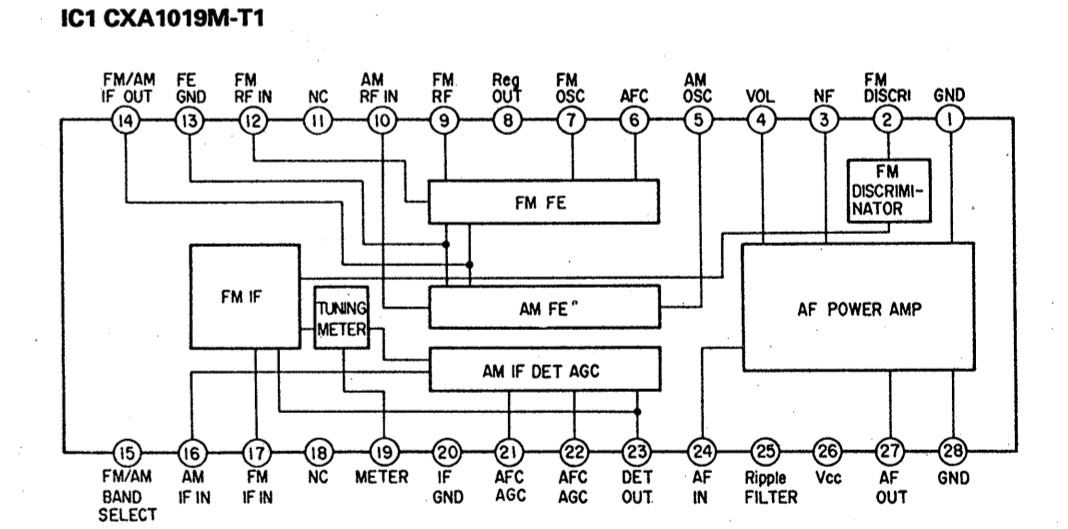
- \square : B+ Line
- No mark: LW
- (): MW
- < >: FM

Voltages are taken with a VOM (input impedance 10M Ω). Voltage variations may be noted due to normal production tolerances.

Signal path \Rightarrow : FM



IC BLOCK DIAGRAMS



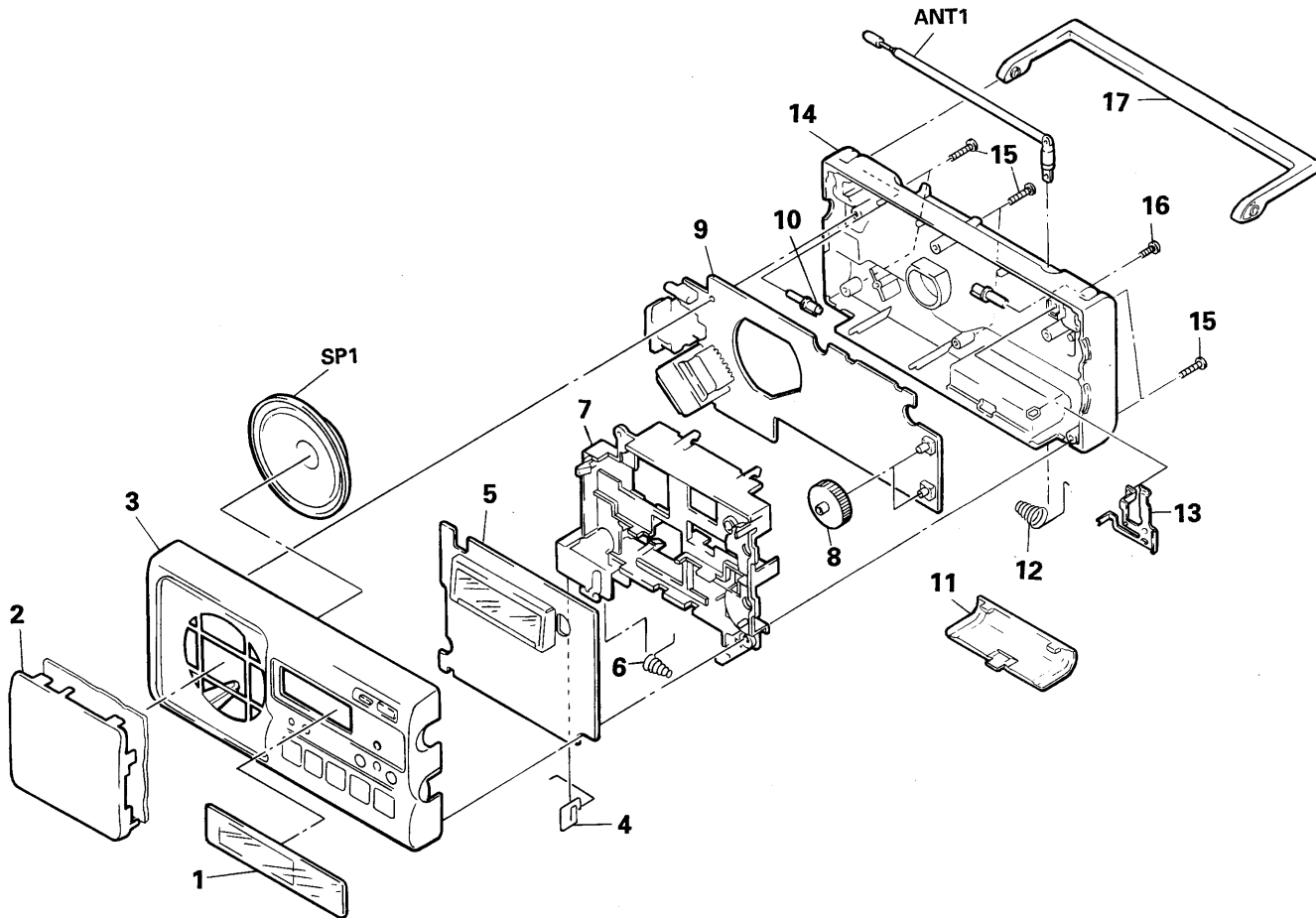
SECTION 4 EXPLODED VIEWS

NOTE:

- -XX, -X mean standardized parts, so they may have some differences from the original one.
- Color Indication of Appearance Parts
Example:
KNOB,BALANCE(WHITE)...(RED)
 ↑ ↑
 Parts color Cabinet's color
- Items marked "*" are not stocked since they are seldom required for routine service. Some delay should be anticipated when ordering these items.
- The mechanical parts with no reference number in the exploded views are not supplied.
- 5AE9 : Swiss, Belgian model

The components identified by mark Δ or dotted line with mark Δ are critical for safety.
Replace only with part number specified.

4-1. CABINET SECTION



Ref. No.	Part No.	Description	Remark	Ref. No.	Part No.	Description	Remark
1	3-380-350-01	WINDOW		10	3-380-352-01	SHAFT (HANDLE)	
2	3-380-357-01	NET, SPEAKER		11	3-380-351-01	LID, BATTERY CASE	
3	X-3365-542-1	CABINET (FRONT) ASSY		12	3-380-360-01	SPRING (+, -), BATTERY COIL	
4	3-380-358-01	SPRING (+), BATTERY COIL		13	3-380-356-01	PLATE (ANT), CONTACT	
* 5	A-3661-638-A	DISPLAY BOARD, COMPLETE (UK)		14	3-380-345-11	CABINET (REAR)	
* 5	A-3661-608-A	DISPLAY BOARD, COMPLETE (AEP)		15	7-685-647-79	SCREW +P 3X10 TYPE2 NON-SLIT	
6	3-380-359-01	SPRING (-), BATTERY COIL		16	3-370-475-01	SCREW (NYLOCK +B 3X6)	
* 7	3-380-346-01	CHASSIS		17	3-380-361-01	HANDLE	
8	3-380-349-01	KNOB (VOL, TONE)		ANT1	1-501-362-11	ANTENNA, TELESCOPIC	
* 9	A-3679-411-A	MAIN BOARD, COMPLETE (AEP)		SP1	1-544-761-11	SPEAKER (9CM)	
* 9	A-3679-413-A	MAIN BOARD, COMPLETE (UK)					

SECTION 5 ELECTRICAL PARTS LIST

NOTE:

The components identified by mark Δ or dotted line with mark Δ are critical for safety.
Replace only with part number specified.

When indicating parts by reference number, please include the board name.

- Due to standardization, replacements in the parts list may be different from the parts specified in the diagrams or the components used on the set.
- -XX, -X mean standardized parts, so they may have some difference from the original one.
- RESISTORS
All resistors are in ohms
METAL : Metal-film resistor
METAL OXIDE : Metal Oxide-film resistor
F : nonflammable
- Items marked "***" are not stocked since they are seldom required for routine service. Some delay should be anticipated when ordering these items.
- SEMICONDUCTORS
In each case, u : μ , for example :
uA...: μ A..., uPA...: μ PA...,
uPB...: μ PB..., uPC...: μ PC...,
uPD...: μ PD...
- CAPACITORS
uF : μ F
- COILS
uH : μ H
- 5AE9 : Swiss, Belgian model

Ref. No.	Part No.	Description	Remark	Ref. No.	Part No.	Description	Remark
*	A-3661-608-A	DISPLAY BOARD, COMPLETE (AEP)		C139	1-164-346-11	CERAMIC CHIP 1uF	16V
*	A-3661-638-A	DISPLAY BOARD, COMPLETE (UK)		C140	1-163-038-00	CERAMIC CHIP 0.1uF	25V
		*****		C141	1-163-129-00	CERAMIC CHIP 330PF	5% 50V
				C142	1-163-129-00	CERAMIC CHIP 330PF	5% 50V
*	3-380-353-01	HOLDER (LCD)		C143	1-163-129-00	CERAMIC CHIP 330PF	5% 50V
		< CAPACITOR >		C144	1-163-129-00	CERAMIC CHIP 330PF	5% 50V
C102	1-163-129-00	CERAMIC CHIP 330PF	5% 50V	C146	1-163-038-00	CERAMIC CHIP 0.1uF	25V
C103	1-163-129-00	CERAMIC CHIP 330PF	5% 50V			< DIODE >	
C105	1-163-129-00	CERAMIC CHIP 330PF	5% 50V	D101	8-719-400-18	DIODE MA152WK	
C106	1-163-129-00	CERAMIC CHIP 330PF	5% 50V	D102	8-719-400-18	DIODE MA152WK	
C107	1-163-129-00	CERAMIC CHIP 330PF	5% 50V	D103	8-719-400-18	DIODE MA152WK	
C109	1-163-129-00	CERAMIC CHIP 330PF	5% 50V	D104	8-719-400-18	DIODE MA152WK	
C110	1-163-033-00	CERAMIC CHIP 0.022uF	50V	D105	8-719-911-19	DIODE 1SS119	
C111	1-163-106-00	CERAMIC CHIP 36PF	5% 50V	D106	8-719-921-80	DIODE MTZJ-11B	
C112	1-163-097-00	CERAMIC CHIP 15PF	5% 50V	D107	8-719-400-18	DIODE MA152WK	
C113	1-164-232-11	CERAMIC CHIP 0.01uF	50V	D901	8-719-921-01	LED EBR5534S	
C114	1-163-109-00	CERAMIC CHIP 47PF	5% 50V			< IC >	
C115	1-163-033-00	CERAMIC CHIP 0.022uF	50V	IC101	8-759-084-66	IC uPD1724GB-598-1A7	
C116	1-163-038-00	CERAMIC CHIP 0.1uF	25V	IC102	8-759-945-21	IC S-8052ANB-NE-S	
C117	1-163-038-00	CERAMIC CHIP 0.1uF	25V			< COIL >	
C118	1-164-232-11	CERAMIC CHIP 0.01uF	50V	L101	1-410-336-11	INDUCTOR 220uH	
C119	1-163-059-00	CERAMIC CHIP 0.01uF	10% 50V	L102	1-410-336-11	INDUCTOR 220uH	
C120	1-124-576-11	ELECT 220uF	20% 4V	L103	1-410-509-11	INDUCTOR 10uH	
C121	1-163-141-00	CERAMIC CHIP 0.001uF	5% 50V			< LIQUID CRYSTAL DISPLAY >	
C122	1-164-346-11	CERAMIC CHIP 1uF	16V	LCD1	1-809-741-11	DISPLAY PANEL, LIQUID CRYSTAL	
C123	1-163-133-00	CERAMIC CHIP 470PF	5% 50V			< TRANSISTOR >	
C124	1-164-006-11	CERAMIC CHIP 0.33uF	10% 16V	Q101	8-729-117-83	TRANSISTOR 2SK160A-K25	
C125	1-126-160-11	ELECT 1uF	20% 50V	Q102	8-729-117-83	TRANSISTOR 2SK160A-K25	
C126	1-163-038-00	CERAMIC CHIP 0.1uF	25V	Q103	8-729-107-46	TRANSISTOR 2SC3624A-L15	
C127	1-124-434-00	ELECT 220uF	20% 4V	Q104	8-729-100-66	TRANSISTOR 2SC1623	
C128	1-164-232-11	CERAMIC CHIP 0.01uF	50V	Q105	8-729-100-66	TRANSISTOR 2SC1623	
C129	1-163-100-00	CERAMIC CHIP 20PF	5% 50V	Q106	8-729-102-07	TRANSISTOR 2SC2223-F13	
C130	1-163-038-00	CERAMIC CHIP 0.1uF	25V	Q107	8-729-102-07	TRANSISTOR 2SC2223-F13	
C131	1-164-232-11	CERAMIC CHIP 0.01uF	50V				
C132	1-164-232-11	CERAMIC CHIP 0.01uF	50V				
C133	1-164-232-11	CERAMIC CHIP 0.01uF	50V				
C134	1-164-232-11	CERAMIC CHIP 0.01uF	50V				
C135	1-164-232-11	CERAMIC CHIP 0.01uF	50V				
C136	1-163-038-00	CERAMIC CHIP 0.1uF	25V				
C137	1-164-004-11	CERAMIC CHIP 0.1uF	10% 25V				
C138	1-163-033-00	CERAMIC CHIP 0.022uF	50V				

Ref. No.	Part No.	Description	Remark	Ref. No.	Part No.	Description	Remark
< RESISTOR >							
R101	1-216-049-00	METAL CHIP	1K 5% 1/10W	R146	1-216-025-00	METAL CHIP	100 5% 1/10W
R102	1-216-049-00	METAL CHIP	1K 5% 1/10W	R147	1-216-083-00	METAL CHIP	27K 5% 1/10W
R103	1-216-025-00	METAL CHIP	100 5% 1/10W	R148	1-216-025-00	METAL CHIP	100 5% 1/10W
R104	1-216-025-00	METAL CHIP	100 5% 1/10W	R149	1-216-041-00	METAL CHIP	470 5% 1/10W
R105	1-216-089-00	METAL CHIP	47K 5% 1/10W	R160	1-216-295-00	METAL CHIP	0 5% 1/10W
R106	1-216-001-00	METAL CHIP	10 5% 1/10W	R161	1-216-295-00	METAL CHIP	0 5% 1/10W
R107	1-216-083-00	METAL CHIP	27K 5% 1/10W	R162	1-216-073-00	METAL CHIP	10K 5% 1/10W
R108	1-216-121-00	METAL CHIP	1M 5% 1/10W	R163	1-216-295-00	METAL CHIP	0 5% 1/10W
R109	1-216-095-00	METAL CHIP	82K 5% 1/10W	R164	1-216-295-00	METAL CHIP	0 5% 1/10W
R110	1-216-073-00	METAL CHIP	10K 5% 1/10W	R165	1-216-296-00	METAL CHIP	0 5% 1/8W
R111	1-216-061-00	METAL CHIP	3.3K 5% 1/10W	< SWITCH >			
R112	1-216-069-00	METAL CHIP	6.8K 5% 1/10W	S101	1-571-760-11	SWITCH, KEY BOARD (5)	
R113	1-216-067-00	METAL CHIP	5.6K 5% 1/10W	S102	1-571-760-11	SWITCH, KEY BOARD (1)	
R114	1-216-057-00	METAL CHIP	2.2K 5% 1/10W	S103	1-571-760-11	SWITCH, KEY BOARD (CLOCK/ENTER)	
R115	1-216-073-00	METAL CHIP	10K 5% 1/10W	S104	1-571-760-11	SWITCH, KEY BOARD (POWER)	
R116	1-216-049-00	METAL CHIP	1K 5% 1/10W	S105	1-571-760-11	SWITCH, KEY BOARD (2)	
R117	1-216-097-00	METAL CHIP	100K 5% 1/10W	S106	1-571-760-11	SWITCH, KEY BOARD (ALARM)	
R118	1-216-097-00	METAL CHIP	100K 5% 1/10W	S107	1-571-760-11	SWITCH, KEY BOARD (-)	
R119	1-216-689-11	METAL CHIP	39K 0.5% 1/10W	S108	1-571-760-11	SWITCH, KEY BOARD (3)	
R120	1-216-067-00	METAL CHIP	5.6K 5% 1/10W	S109	1-571-760-11	SWITCH, KEY BOARD (BAND/STANDBY)	
R121	1-216-067-00	METAL CHIP	5.6K 5% 1/10W	S110	1-571-760-11	SWITCH, KEY BOARD (+)	
R122	1-216-067-00	METAL CHIP	5.6K 5% 1/10W	S111	1-571-760-11	SWITCH, KEY BOARD (4)	
R123	1-216-067-00	METAL CHIP	5.6K 5% 1/10W	S112	1-571-760-11	SWITCH, KEY BOARD (KEY PROTECT)	
R124	1-216-067-00	METAL CHIP	5.6K 5% 1/10W	< TRANSFORMER >			
R125	1-216-067-00	METAL CHIP	5.6K 5% 1/10W	T101	1-449-138-11	TRANSFORMER, DC-DC CONVERTER	
R126	1-216-067-00	METAL CHIP	5.6K 5% 1/10W	< VIBRATOR >			
R127	1-216-097-00	METAL CHIP	100K 5% 1/10W	X101	1-567-769-11	VIBRATOR, CRYSTAL	
R128	1-216-097-00	METAL CHIP	100K 5% 1/10W	*****			
R129	1-216-097-00	METAL CHIP	100K 5% 1/10W	*	A-3679-411-A	MAIN BOARD, COMPLETE (AEP)	
R130	1-216-097-00	METAL CHIP	100K 5% 1/10W	*	A-3679-413-A	MAIN BOARD, COMPLETE (UK)	
R131	1-216-097-00	METAL CHIP	100K 5% 1/10W	*****			
R132	1-216-097-00	METAL CHIP	100K 5% 1/10W	< FILTER >			
R133	1-216-097-00	METAL CHIP	100K 5% 1/10W	BPF1	1-236-711-21	FILTER, BAND PASS	
R134	1-216-097-00	METAL CHIP	100K 5% 1/10W	< CAPACITOR >			
R135	1-216-097-00	METAL CHIP	100K 5% 1/10W	C1	1-163-141-00	CERAMIC CHIP	0.001uF 5% 50V
R136	1-216-097-00	METAL CHIP	100K 5% 1/10W	C3	1-163-141-00	CERAMIC CHIP	0.001uF 5% 50V
R137	1-216-097-00	METAL CHIP	100K 5% 1/10W	C4	1-163-141-00	CERAMIC CHIP	0.001uF 5% 50V
R138	1-216-097-00	METAL CHIP	100K 5% 1/10W	C5	1-131-374-00	TANTALUM	33uF 10% 16V
R139	1-216-097-00	METAL CHIP	100K 5% 1/10W	C6	1-163-077-00	CERAMIC CHIP	0.1uF 10% 25V
R140	1-216-097-00	METAL CHIP	100K 5% 1/10W	C7	1-163-227-11	CERAMIC CHIP	10PF 5% 50V
R141	1-216-097-00	METAL CHIP	100K 5% 1/10W	C8	1-163-104-00	CERAMIC CHIP	30PF 5% 50V
R142	1-216-097-00	METAL CHIP	100K 5% 1/10W	C9	1-163-141-00	CERAMIC CHIP	0.001uF 5% 50V
R143	1-216-097-00	METAL CHIP	100K 5% 1/10W				
R144	1-216-041-00	METAL CHIP	470 5% 1/10W				
R145	1-216-094-00	METAL GLAZE	75K 5% 1/10W				

Ref. No.	Part No.	Description	Remark
C10	1-163-141-00	CERAMIC CHIP 0.001uF	5% 50V
C11	1-164-232-11	CERAMIC CHIP 0.01uF	50V
C15	1-163-104-00	CERAMIC CHIP 30PF	5% 50V
C16	1-163-114-00	CERAMIC CHIP 75PF	5% 50V
C20	1-163-021-11	CERAMIC CHIP 0.01uF	
C24	1-163-033-00	CERAMIC CHIP 0.022uF	50V
C25	1-164-232-11	CERAMIC CHIP 0.01uF	50V
C26	1-164-232-11	CERAMIC CHIP 0.01uF	50V
C27	1-163-132-00	CERAMIC CHIP 430PF	5% 50V
C28	1-163-037-11	CERAMIC CHIP 0.022uF	10% 25V
C29	1-163-088-00	CERAMIC CHIP 5PF	50V
C30	1-163-263-11	CERAMIC CHIP 330PF	5% 50V
C31	1-163-217-11	CERAMIC CHIP 1PF	0.25PF50V
C32	1-163-075-00	CERAMIC CHIP 0.047uF	50V
C33	1-124-907-11	ELECT 10uF	20% 50V
C34	1-124-907-11	ELECT 10uF	20% 50V
C35	1-124-927-11	ELECT 4.7uF	20% 100V
C36	1-163-021-11	CERAMIC CHIP 0.01uF	50V
C37	1-163-077-00	CERAMIC CHIP 0.1uF	10% 25V
C38	1-124-471-00	ELECT 1000uF	20% 6.3V
C39	1-123-382-00	ELECT 3.3uF	20% 100V
C40	1-163-809-11	CERAMIC CHIP 0.047uF	50V
C41	1-164-005-11	CERAMIC CHIP 0.47uF	25V
C43	1-164-232-11	CERAMIC CHIP 0.01uF	50V
C44	1-163-809-11	CERAMIC CHIP 0.047uF	10% 25V
C45	1-124-927-11	ELECT 4.7uF	20% 100V
C46	1-164-232-11	CERAMIC CHIP 0.01uF	50V
C47	1-162-638-11	CERAMIC CHIP 1uF	16V
C48	1-124-471-00	ELECT 1000uF	20% 6.3V
C49	1-163-031-11	CERAMIC CHIP 0.01uF	50V
C50	1-163-035-00	CERAMIC CHIP 0.047uF	50V
C51	1-163-023-00	CERAMIC CHIP 0.015uF	5% 50V
C52	1-164-004-11	CERAMIC CHIP 0.1uF	10% 25V
C53	1-164-232-11	CERAMIC CHIP 0.01uF	50V
C55	1-124-471-00	ELECT 1000uF	20% 6.3V
C57	1-163-017-00	CERAMIC CHIP 0.0047uF	5% 50V
C58	1-124-907-11	ELECT 10uF	20% 50V
C59	1-164-004-11	CERAMIC CHIP 0.1uF	10% 25V
C61	1-164-232-11	CERAMIC CHIP 0.01uF	50V
C62	1-163-117-00	CERAMIC CHIP 100PF	5% 50V
C63	1-163-117-00	CERAMIC CHIP 100PF	5% 50V
C70	1-163-033-00	CERAMIC CHIP 0.022uF	50V
C72	1-124-468-11	ELECT 100uF	20% 6.3V
C301	1-163-035-00	CERAMIC CHIP 0.047uF	50V
C302	1-163-035-00	CERAMIC CHIP 0.047uF	50V
C304	1-126-101-11	ELECT 100uF	20% 16V
C305	1-124-360-00	ELECT 1000uF	20% 16V

Ref. No.	Part No.	Description	Remark
< FILTER >			
CF1	1-579-265-81	FILTER, CERAMIC	
CF2	1-579-265-81	FILTER, CERAMIC	
CF3	1-567-777-11	FILTER, CERAMIC	
CF4	1-579-265-81	FILTER, CERAMIC (AE9, 5AE9)	
< CONNECTOR >			
CN101	1-580-950-11	SOCKET, CONNECTOR 12P	
CNJ1	1-563-836-21	JACK (EARPHONE)	
△CNJ301	1-526-838-11	INLET, AC 2P (AC IN)	
< TRIMMER >			
CT1	1-141-304-21	CAP, TRIMMER 10PF	
CT2	1-141-304-21	CAP, TRIMMER 10PF	
CT3	1-141-443-11	TRIMMER, CERAMIC	
CT4	1-141-304-21	CAP, TRIMMER 10PF	
CT5	1-141-443-11	TRIMMER, CERAMIC	
< DIODE >			
D1	8-719-911-19	DIODE 1SS119	
D3	8-719-911-19	DIODE 1SS119	
D7	8-719-949-46	DIODE 1T32	
D8	8-719-949-46	DIODE 1T32	
D13	8-719-980-71	DIODE SVC342L-V	
D16	8-719-911-19	DIODE 1SS119	
D301	8-719-200-02	DIODE 10E2	
D302	8-719-200-02	DIODE 10E2	
D303	8-719-911-19	DIODE 1SS119	
D304	8-719-911-19	DIODE 1SS119	
D305	8-719-911-19	DIODE 1SS119	
D306	8-719-911-19	DIODE 1SS119	
< IC >			
IC1	8-759-605-77	IC CXA1019M-T1	
IC2	8-759-982-73	IC BA10393F	
IC3	8-759-939-41	IC S-81230AG-RB	
IC4	8-759-800-27	IC LA5003	
< COIL >			
L3	1-460-339-11	COIL (WITH CORE) (FM-RF)	
L4	1-459-837-11	COIL (WITH CORE) (FM-OSC)	
L8	1-402-624-11	ANTENNA, FERRITE-ROD (LW/MW)	
L11	1-406-253-11	COIL (AM OSC) 975K-2.1MHz	
L12	1-410-294-11	INDUCTOR, MICRO 38uH	
L13	1-410-294-11	INDUCTOR, MICRO 38uH	

The components identified by mark △ or dotted line with mark △ are critical for safety. Replace only with part number specified.

Ref. No.	Part No.	Description	Remark
< TRANSFORMER >			
△PT1	1-450-324-11	TRANSFORMER, POWER (AEP)	
△PT1	1-450-325-11	TRANSFORMER, POWER (UK)	
< TRANSISTOR >			
Q1	8-729-823-22	TRANSISTOR 2SC3576	
Q2	8-729-901-01	TRANSISTOR DTC144EK (AE9, 5AE9)	
Q3	8-729-823-22	TRANSISTOR 2SC3576	
Q4	8-729-105-22	TRANSISTOR 2SK238-T1K15	
Q5	8-729-107-46	TRANSISTOR 2SC3624A-L15	
Q7	8-729-102-07	TRANSISTOR 2SC2223-F13	
Q8	8-729-901-01	TRANSISTOR DTC144EK	
Q9	8-729-216-22	TRANSISTOR 2SA1162	
Q10	8-729-141-48	TRANSISTOR 2SB624-BV345	
Q11	8-729-901-01	TRANSISTOR DTC144EK	
Q12	8-729-900-51	TRANSISTOR DTA114TK	
Q301	8-729-142-46	TRANSISTOR 2SC2001-LK	
< RESISTOR >			
R2	1-216-097-00	METAL CHIP 100K 5%	1/10W
R3	1-216-097-00	METAL CHIP 100K 5%	1/10W
R4	1-216-081-00	METAL CHIP 22K 5%	1/10W
R5	1-216-097-00	METAL CHIP 100K 5%	1/10W
R6	1-216-097-00	METAL CHIP 100K 5%	1/10W
R7	1-216-083-00	METAL CHIP 27K 5%	1/10W
R8	1-216-029-00	METAL CHIP 150 5%	1/10W
R9	1-216-097-00	METAL CHIP 100K 5%	1/10W
R10	1-216-049-00	METAL CHIP 1K 5%	1/10W
R11	1-216-097-00	METAL CHIP 100K 5%	1/10W
R12	1-216-025-00	METAL CHIP 100 5%	1/10W
R13	1-216-001-00	METAL CHIP 10 5%	1/10W
R14	1-216-049-00	METAL CHIP 1K 5%	1/10W
R15	1-216-097-00	METAL CHIP 100K 5%	1/10W
R16	1-216-073-00	METAL CHIP 10K 5%	1/10W
R17	1-216-097-00	METAL CHIP 100K 5%	1/10W
R18	1-216-105-00	METAL CHIP 220K 5%	1/10W
R19	1-216-045-00	METAL CHIP 680 5%	1/10W
R20	1-216-121-00	METAL CHIP 1M 5%	1/10W
R25	1-216-037-00	METAL CHIP 330 5%	1/10W
R26	1-216-057-00	METAL CHIP 2.2K 5%	1/10W
R27	1-216-035-00	METAL CHIP 270 5%	1/10W
R28	1-216-073-00	METAL CHIP 10K 5%	1/10W
R29	1-216-049-00	METAL CHIP 1K 5%	1/10W
R30	1-216-049-00	METAL CHIP 1K 5%	1/10W
R31	1-216-081-00	METAL CHIP 22K 5%	1/10W
R32	1-216-049-00	METAL CHIP 1K 5%	1/10W
R33	1-216-025-00	METAL CHIP 100 5%	1/10W
R34	1-216-015-00	METAL CHIP 39 5%	1/10W

Ref. No.	Part No.	Description	Remark
R35	1-216-073-00	METAL CHIP 10K 5%	1/10W
R36	1-216-025-00	METAL CHIP 100 5%	1/10W
R37	1-216-109-00	METAL CHIP 330K 5%	1/10W
R38	1-216-105-00	METAL CHIP 220K 5%	1/10W
R39	1-216-073-00	METAL CHIP 10K 5%	1/10W
R40	1-216-089-00	METAL CHIP 47K 5%	1/10W
R41	1-216-025-00	METAL CHIP 100 5%	1/10W
R42	1-216-057-00	METAL CHIP 2.2K 5%	1/10W
R43	1-216-113-00	METAL CHIP 470K 5%	1/10W
R49	1-216-059-00	METAL CHIP 2.7K 5%	1/10W
R50	1-216-025-00	METAL CHIP 100 5%	1/10W
R60	1-216-295-00	METAL CHIP 0 5%	1/10W
R61	1-216-296-00	METAL CHIP 0 5%	1/8W
R62	1-216-295-00	METAL CHIP 0 5%	1/10W
R63	1-216-295-00	METAL CHIP 0 5%	1/10W
R64	1-216-295-00	METAL CHIP 0 5%	1/10W
R65	1-216-295-00	METAL CHIP 0 5%	1/10W
R301	1-216-184-00	METAL GLAZE 270 5%	1/8W

< VARIABLE RESISTOR >

RV1	1-241-947-11	RES, VAR, CARBON 10K (TONE)
RV2	1-241-946-11	RES, VAR, CARBON 50K (VOL)

< COIL >

T1	1-416-021-11	COIL (AM IFT)
----	--------------	---------------

MISCELLANEOUS

ANT1	1-501-362-11	ANTENNA, TELESCOPIC
SP1	1-544-761-11	SPEAKER (9CM)

ACCESSORIES & PACKING MATERIALS

	1-501-499-21	COUPLER, ANTENNA (5AE9)
△	1-558-032-11	CORD, POWER (UK)
△	1-696-562-11	CORD, POWER (AEP)
*	3-381-154-01	INDIVIDUAL CARTON
*	3-381-664-01	LABEL, MODEL NUMBER (UK)
	3-755-442-11	MANUAL, INSTRUCTION

The components identified by mark △ or dotted line with mark △ are critical for safety. Replace only with part number specified.

ICF-M750L


SONY
SERVICE MANUAL

AEP Model
UK Model

CORRECTION-1

Correct your service manual as shown below.

 : indicates corrected portion.

Page	INCORRECT			CORRECT	
	<u>No.</u>	<u>Part No.</u>	<u>Description</u>	<u>Part No.</u>	<u>Description</u>
13	14	3-380-345-11	CABINET (REAR)	3-380-345-01 	CABINET (REAR)