

MODEL 104, Lone Ranger, Rudolph

LINE VOLTAGE: This receiver is designed for operation on 105-125 Volts, 50-60 Cycles, either Alternating or Direct Current (AC-DC).

POWER CONSUMPTION: 30 Watts.

TUNING RANGE: Broadcast: 540 to 1650 Kilocycles (180 to 555 meters).

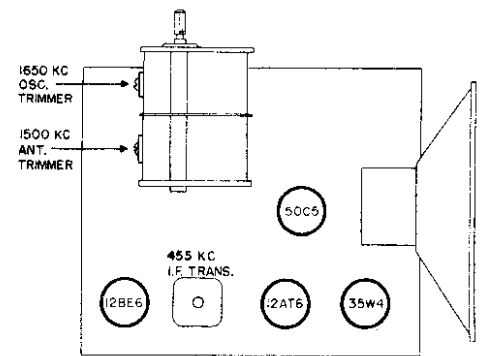
TUBES: The tubes used, and their functions, are as follows:

- 12BE6 Converter
- 12AT6 Detector, Avc and Audio Amp.
- 35W4 Rectifier
- 50C5 Power Amplifier

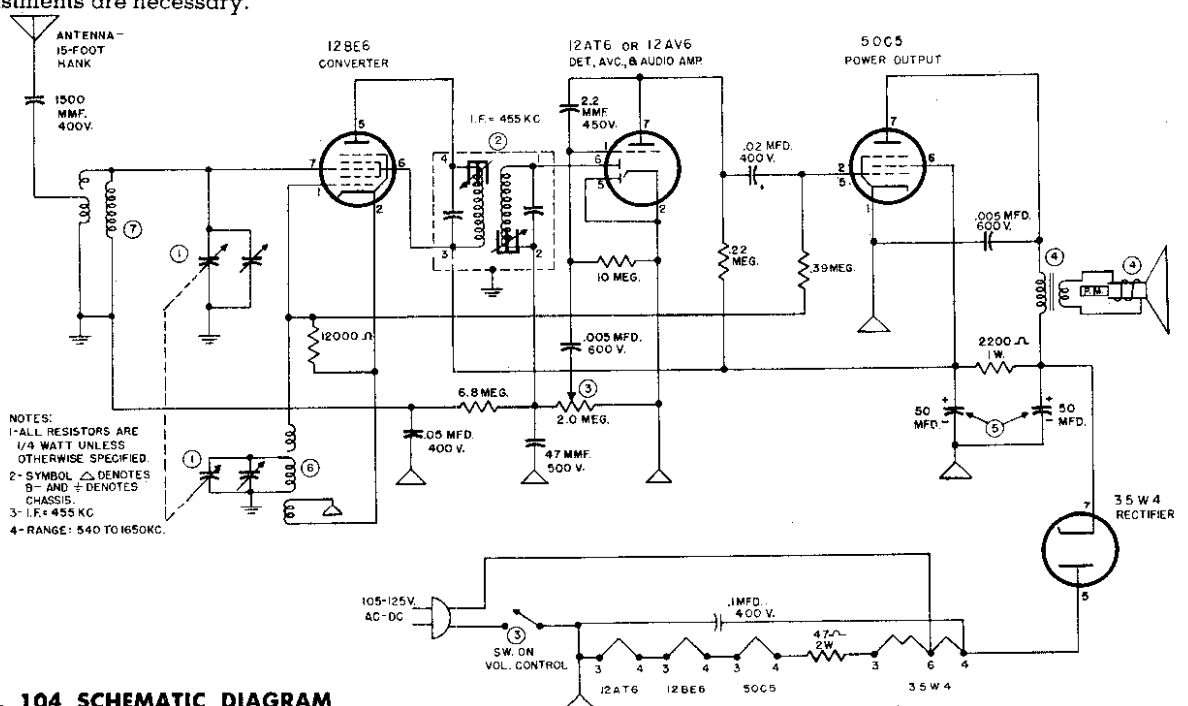
ALIGNMENT: Should it become necessary at any time to check the alignment of this receiver, proceed as follows:

- (1) Connect the high side of a 455 KC Signal Generator through a .1 mf capacitor to the stator lug on the rear section of the variable capacitor; the ground lead to one of the lugs on the line on-off switch. Connect a suitable output meter across the speaker voice coil. Turn the Volume and Tuning controls to their extreme clockwise positions.
- (2) Adjust the trimmers located at the top and bottom of the I-F transformer for maximum indication on the output meter.
- (3) Connect the Signal Generator high side to the antenna lug through a 47 mmfd capacitor; the low side remains as in step (1). Set the Signal Generator to 1650 KC.
- (4) With Variable Capacitor set at the extreme clockwise position, tune in the 1650 KC signal by means of the Oscillator Trimmer on the Variable Capacitor (front section).
- (5) Set the Signal Generator to 1500 KC and turn the Tuning Control so that this frequency is received. Adjust the Antenna Trimmer on the Variable Capacitor (rear section) for maximum output. No other adjustments are necessary.

ITEM	PART NO.	DESCRIPTION
①	2.225	2-GANG VAR. CONDENSER
②	1.445-2	I.F. TRANSFORMER
③	8.201-9	VOLUME CONTROL W/SWITCH
④	30.332-1	4" PM SPEAKER WITH OUTPUT TRANSFORMER
⑤	5.436-1	50-50 MFD. ELECT. 150V. D.C.
⑥	1.402-4	OSCILLATOR COIL
⑦	1.534	ANTENNA COIL



TRIMMER AND TUBE LOCATION DIAGRAM



MODEL 104 SCHEMATIC DIAGRAM

© John F. Rider