

**UNITED MOTORS SERVICE**      **MODELS R1230, R1230A,**  
**DIV. OF GENERAL MOTORS CORP.**      **R1231, R1231A, R1232**

**SERVICE PARTS LIST (Cont.)**

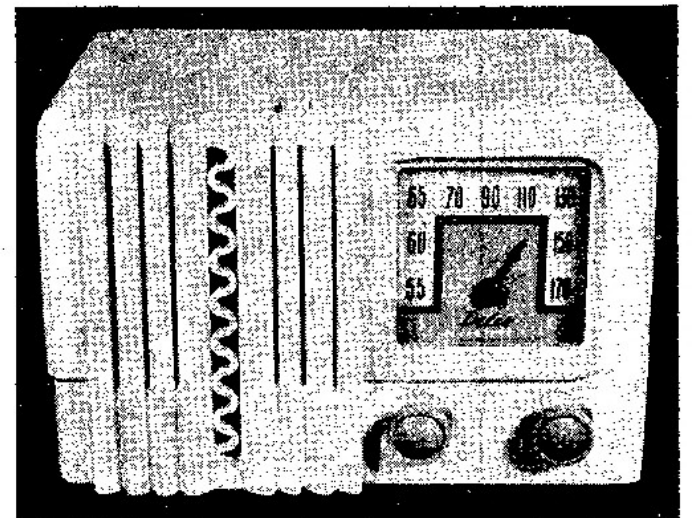
Illus. No.	Service Part No.	Description
		<b>MECHANICAL PARTS</b>
		<b>MISCELLANEOUS CHASSIS PARTS</b>
	1217406	Bracket - Speaker Mounting (For 5" Speakers)
	1216559	Clip - Condenser
	1212233	Cord - Universal Dial Drive
	1217210	Dial and Dial Plate - Dial, Dial Plate and Bracket Assy. (Model R-1232)
	1217213	Dial and Dial Plate - Dial, Dial Plate and Bracket Assy. (Models R-1230, R-1230A)
	1217421	Dial and Dial Plate - Dial, Dial Plate and Bracket Assy. (Models R-1231, R-1231A)
	1216831	Pointer - Dial
20	1216479	Shaft - Tuning
	1217366	Spacer (Use with Tuning Shaft)
	1217323	Spring - Drive Cord Tension
19	1217819	Socket - Dial Light, Less Lamp
	7236279	Socket - Octal Tube
	1216508	Washer - "C" (Use with Tuning Shaft)
		<b>MISCELLANEOUS CABINET PARTS</b>
	1216715	Cabinet - Ivory - Models R-1230, R-1230A (Includes Crystal)
	1216827	Cabinet - Walnut - Model R-1232 (Includes Crystal)
	1216714	Cabinet - Brown - Models R-1231, R-1231A (Includes Crystal)
	1216660	Crystal - Dial (Models R-1230, R-1230A, R-1231, R-1231A)
	1216811	Crystal - Dial (Model R-1232)
	1216825	Knob - Ivory - Volume and Tuning (Models R-1230, R-1230A)
	1216826	Knob - Brown - Volume and Tuning (Models R-1231, R-1231A, R-1232)

**GENERAL:**

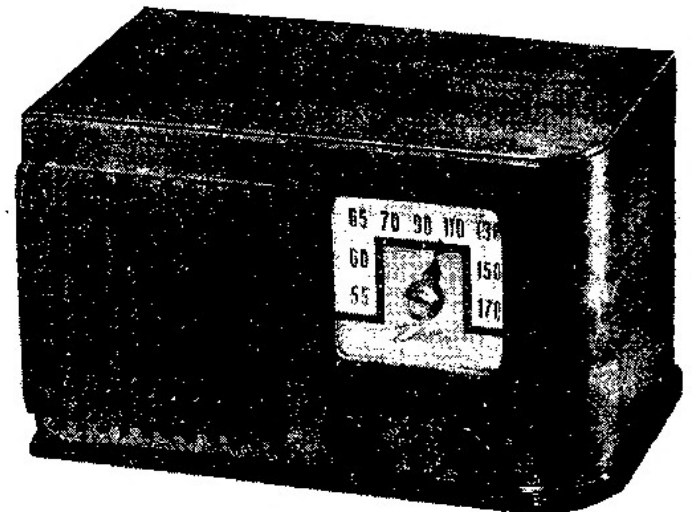
Tubes .....	5
Speaker .....	5" PM
Tuning .....	Manual
Tuning Range .....	540 to 1720 KC
Intermediate Frequency .....	456 KC
Power Supply .....	105/125 volts AC-DC
Power Consumption .....	30 Watts

- Model R-1232—Walnut Wood Cabinet
- Models R-1231 and R-1231A—Brown Plastic Cabinet
- Models R-1230 and R-1230A—White or Ivory Plastic Cabinet

The same chassis is used in all of the five different models listed in this bulletin. Models R-1230A and R-1231A are equipped with a shielded Second I. F. Transformer which is mounted on the upper side of the chassis whereas Models R-1230, R-1231 and R-1232 are equipped with an unshielded Second I. F. which is mounted on the under side of the chassis.



**MODELS R-1230, R-1231,  
R-1230A and R-1231A**



**MODEL R-1232**

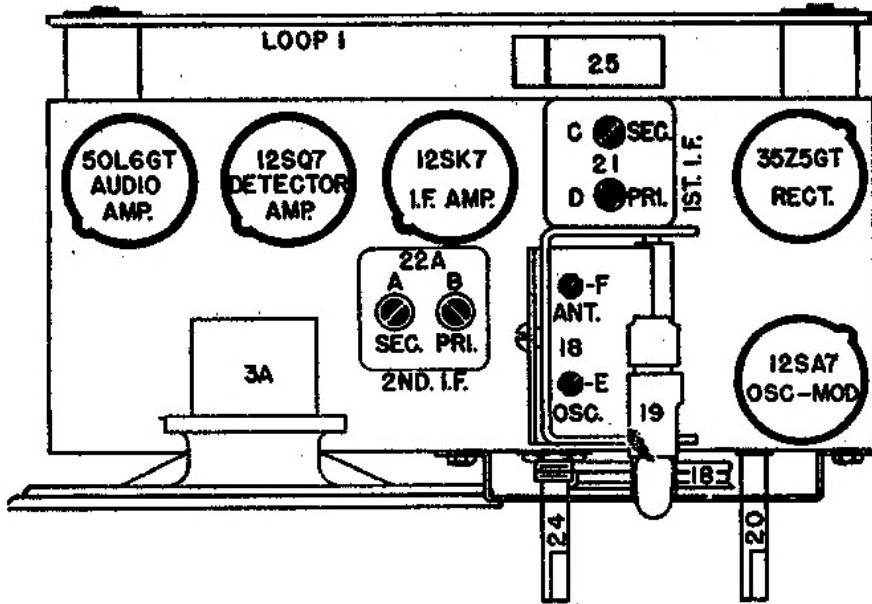
MODELS R1230, R1230A,  
R1231, R1231A, R1232

UNITED MOTORS SERVICE  
DIV. OF GENERAL MOTORS CORP.

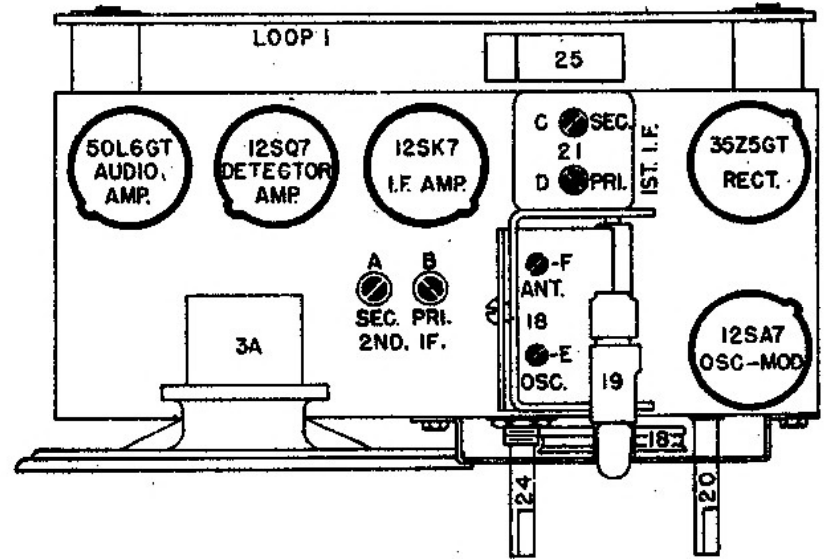
### SERVICE PARTS LIST

Illus. No.	Service Part No.	Description
<b>ELECTRICAL PARTS</b>		
<b>COILS</b>		
1	1217593	Antenna Assembly - Loop and Back Cover
2	1216518	Oscillator
21	1216504	1st I. F.
22	1216980	2nd I. F. (Includes Illus. No. 7 and 28) Unshielded - Mounted on under side of chassis
22A	1217594	2nd I. F. (Includes Illus. No. 28) Shielded - Mounted on top of chassis
<b>CONDENSERS</b>		
11	E204	.20 Mfd. 400V Tubular
12	E502	.005 Mfd. 600V Tubular
13	G471	.000470 Mfd. Molded
14	E503	.05 Mfd. 600V Tubular
15	E503	.05 Mfd. 600V Tubular
16	E103	.01 Mfd. 600V Tubular
17	J908	2 Section Electrolytic
17A		40 Mfd. 150V
17B		40 Mfd. 150V
18	1217391	Condenser and Pulley Parts Package Condenser and Pulley Grommet (3) Spacer Sleeve (3) Screw (3)
25	E503	.05 Mfd. 600V Tubular
26	E502	.005 Mfd. 600V Tubular
<b>RESISTORS</b>		
4	A224	220,000 Ohms 1/2 W Insulated
5	A151	150 Ohms 1/2 W Insulated
6	A685	6.8 Megohms 1/2 W Insulated
7	A335	3.3 Megohms 1/2 W Insulated
8	A223	22,000 Ohms 1/2 W Insulated
9	B102	1,000 Ohms 1 W Insulated
10	A474	470,000 Ohms 1/2 W Insulated
27	A224	220,000 Ohms 1/2 W Insulated
28	A473	47,000 Ohms 1/2 W Insulated (Used only on sets utilizing volume controls without a stop.)
29	A330	33 Ohms 1/2 W Insulated
<b>TUBE COMPLEMENT</b>		
	1213809	12SA7
	1213812	12SK7
	1213813	12SQ7
	1214366	50L6GT
	1213848	35Z5GT - Rectifier
<b>MISCELLANEOUS ELECTRICAL PARTS</b>		
24	1216477	Control - Volume and Switch
24A		Volume Control
24B		Switch
	1216512	Cord - Universal Power
	435433	Lamp - Dial Light (Mazda #47)
3	1216563	Speaker - 5" P. M. (Bracket #1217406 is necessary when replacing original 4" speakers)
23	1216571	Transformer - Output

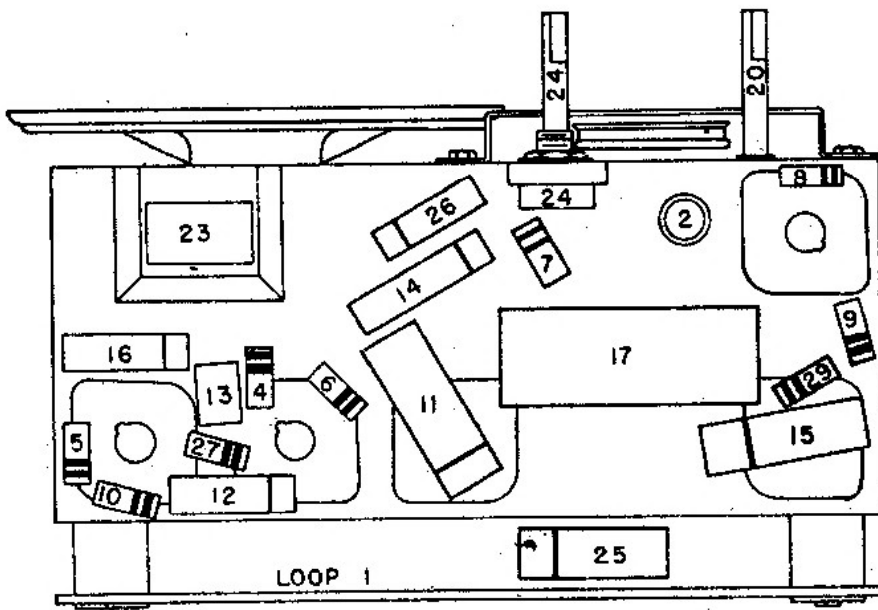
UNITED MOTORS SERVICE MODELS R1230, R1230A,  
DIV. OF GENERAL MOTORS CORP. R1231, R1231A, R1232



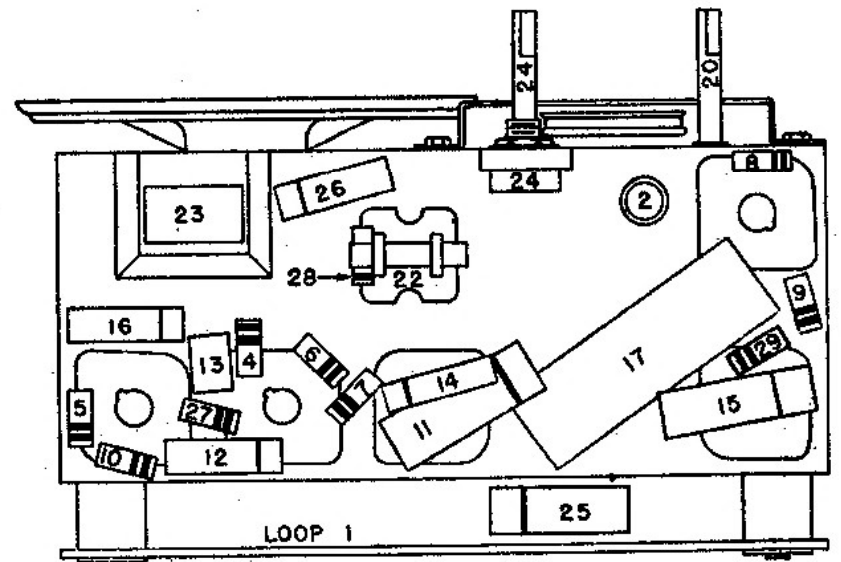
PARTS LAYOUT - TUBE VIEW  
MODELS R-1230A, R-1231A  
AND R-1232A



PARTS LAYOUT - TUBE VIEW  
MODELS R-1230, R-1231  
AND R-1232



PARTS LAYOUT - CHASSIS VIEW  
MODELS R-1230A, R-1231A  
AND R-1232A



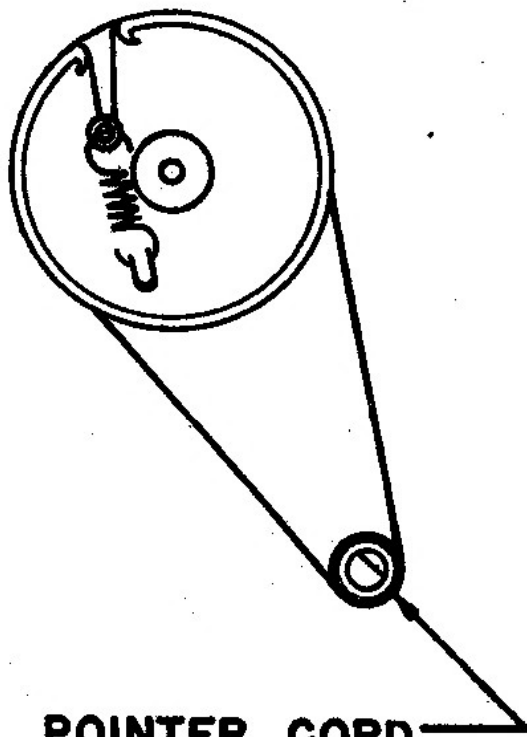
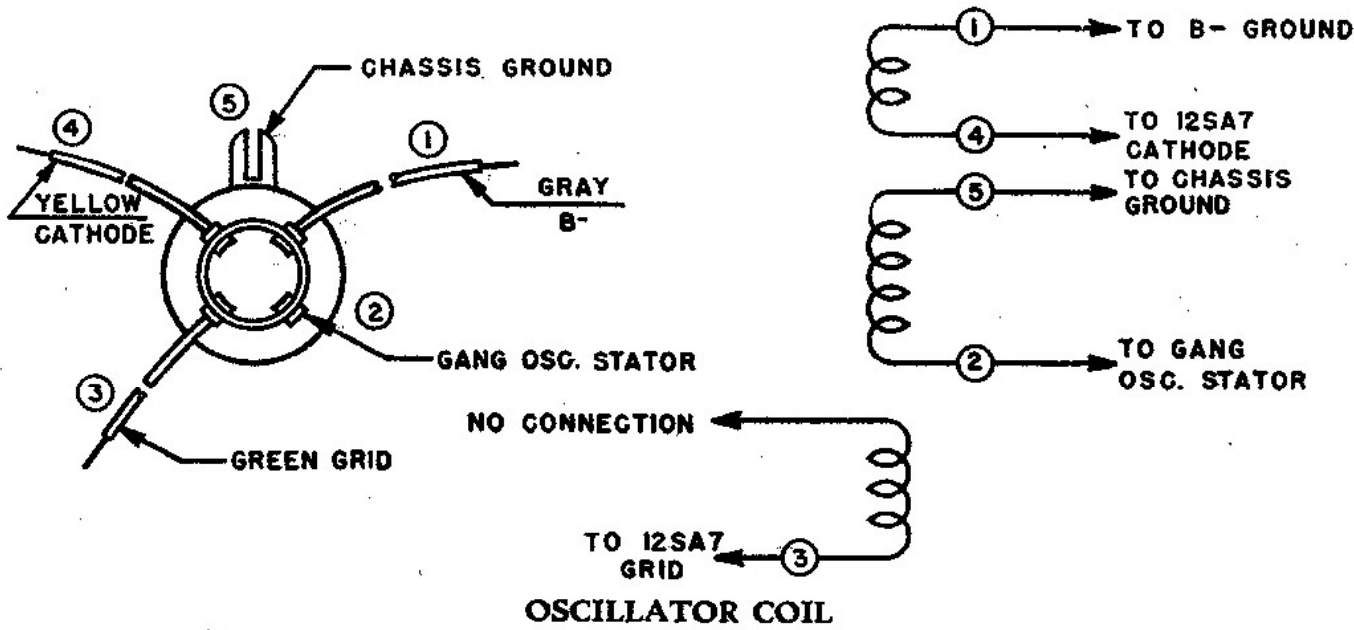
PARTS LAYOUT - CHASSIS VIEW  
MODELS R-1230, R-1231  
AND R-1232

ALIGNMENT PROCEDURE

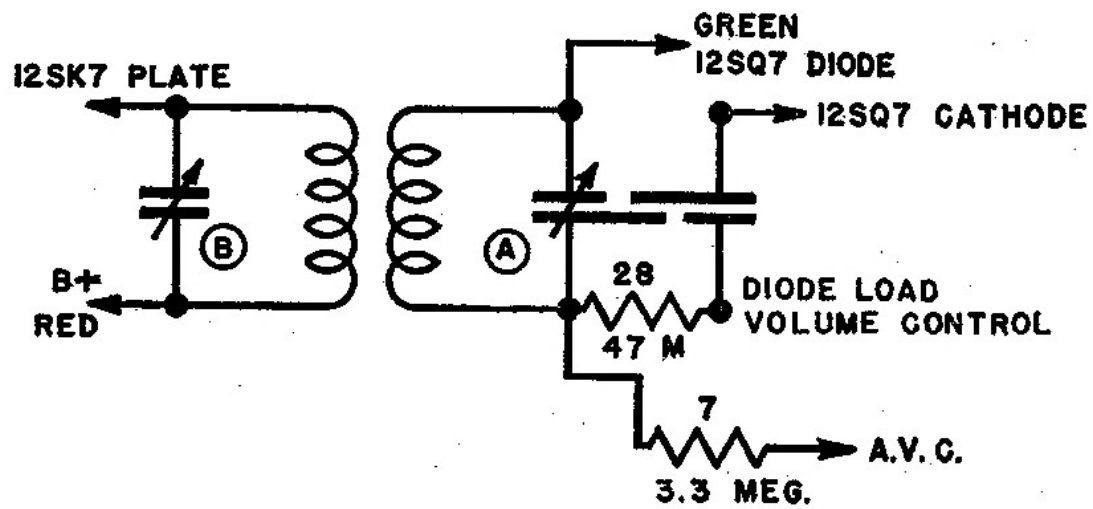
Output Meter Connections ..... Across Voice Coil Winding  
 Generator Ground ..... To Chassis through .01 MFD  
 Dummy Antenna ..... In Series with generator  
 Volume Control Position ..... Fully on

Steps	Series Condenser or Dummy Antenna	Connect Signal Generator To	Adjust Signal Generator To	Turn Radio Dial To	Adjust Trimmers
1	0.1 Mfd.	12SA7 Grid (Pin #8) Ground Generator to B- (not chassis)	456 KC	Quiet Point near H. F. end	A-B (2nd IF Trans) C-D (1st IF Trans)
2	.000200 Mfd.	Ant. lead	1720 KC	1720 KC	E (Osc.)
3	.000200 Mfd.	Ant. lead	1400 KC	1400 KC	F (Ant.)

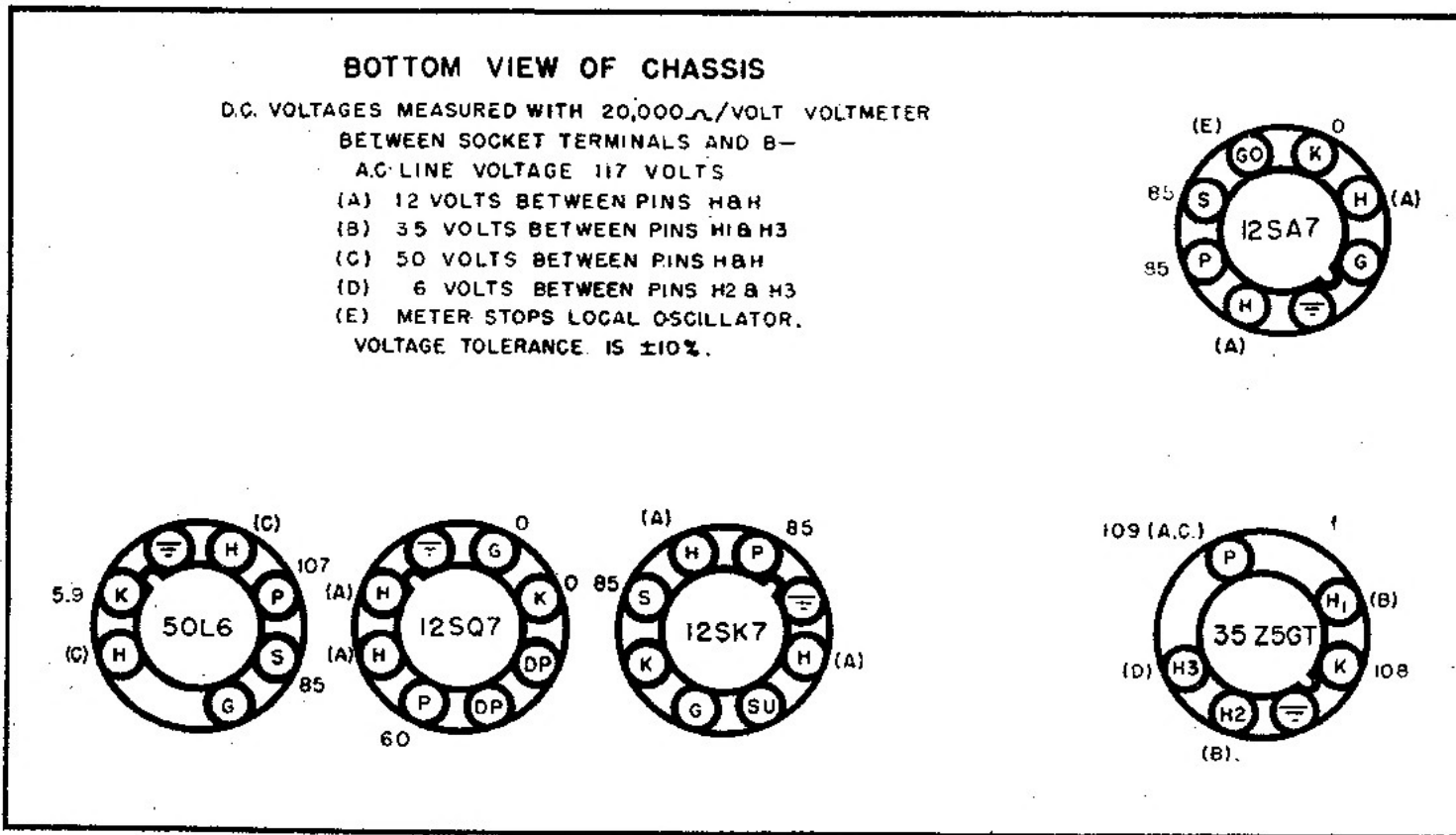
MODELS R1230, R1230A, R1231, R1231A, R1232 UNITED MOTORS SERVICE DIV. OF GENERAL MOTORS CORP.



POINTER CORD  
2-1/2 TURNS  
DIAL STRING DRAWING

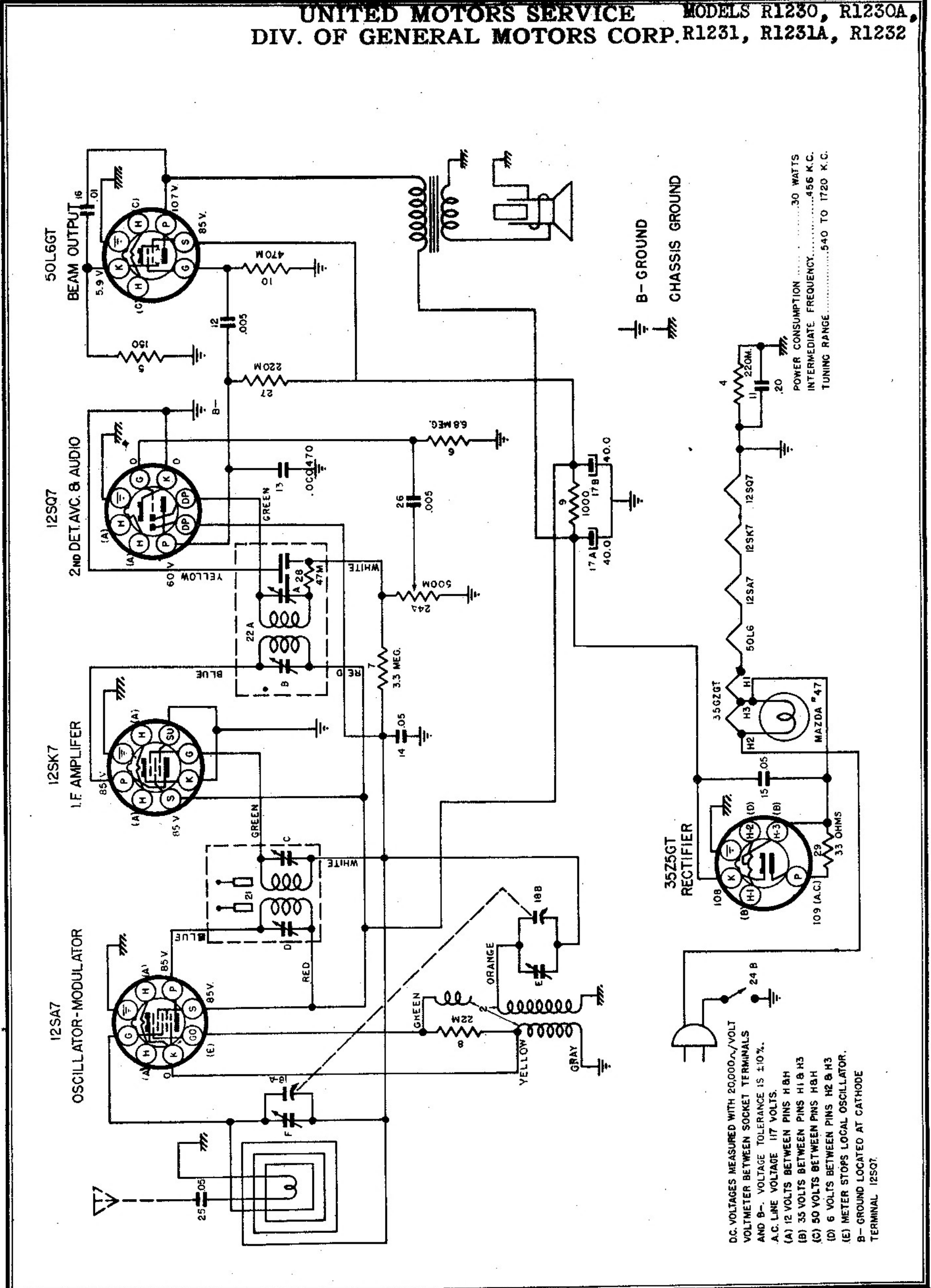


SECOND I. F. TRANSFORMER  
PART #22 UNSHIELDED  
MODELS R-1230, R-1231 and R-1232



TUBE SOCKET VOLTAGE CHART

UNITED MOTORS SERVICE MODELS R1230, R1230A,  
 DIV. OF GENERAL MOTORS CORP. R1231, R1231A, R1232



POWER CONSUMPTION .....30 WATTS  
 INTERMEDIATE FREQUENCY.....456 K.C.  
 TUNING RANGE .....540 TO 1720 K.C.

DC VOLTAGES MEASURED WITH 20,000 Ω/VOLT  
 VOLTMETER BETWEEN SOCKET TERMINALS  
 AND B-. VOLTAGE TOLERANCE IS ±10%.  
 A.C. LINE VOLTAGE 117 VOLTS.  
 (A) 12 VOLTS BETWEEN PINS H & H  
 (B) 35 VOLTS BETWEEN PINS H1 & H3  
 (C) 50 VOLTS BETWEEN PINS H8 & H  
 (D) 6 VOLTS BETWEEN PINS H2 & H3  
 (E) METER STOPS LOCAL OSCILLATOR.  
 B- GROUND LOCATED AT CATHODE  
 TERMINAL 12SQ7