

Firestone Tire & Rubber Co.

Model: 4-C-1

Chassis:

Year: Pre 1955

Power:

Circuit:

IF:

Tubes:

Bands:

Resources

[Riders Volume 23 - FIRESTONE 23-15](#)

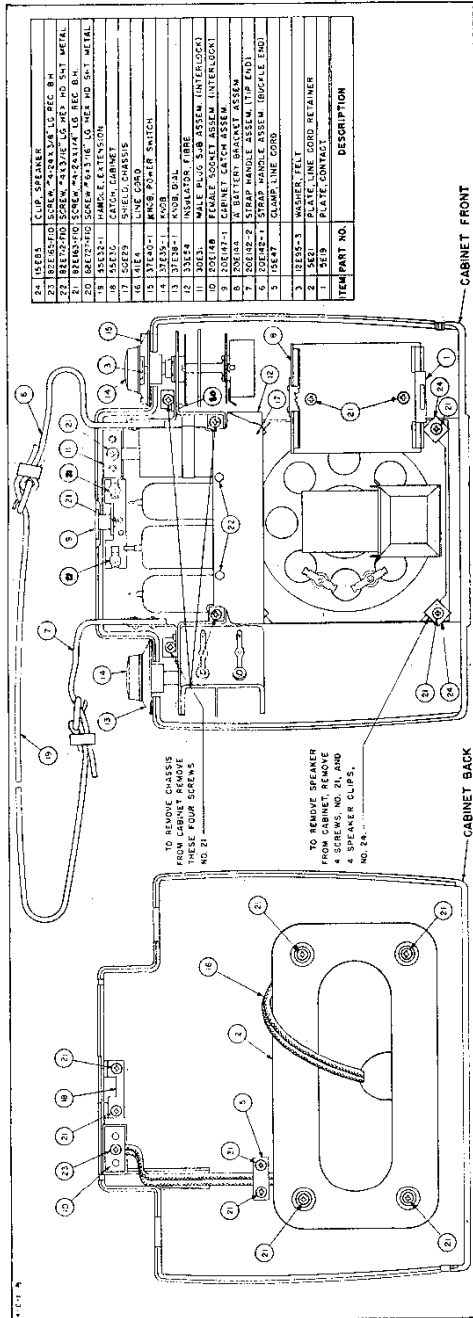
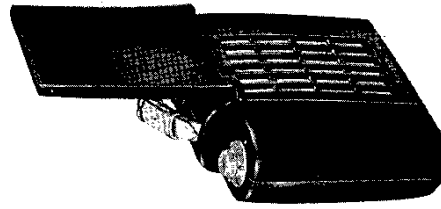
[Riders Volume 23 - FIRESTONE 23-16](#)

[Riders Volume 23 - FIRESTONE 23-17](#)

[Riders Volume 23 - FIRESTONE 23-18](#)

[Riders Volume 23 - FIRESTONE 23-19](#)

[Riders Volume 23 - FIRESTONE 23-20](#)



ALIGNMENT PROCEDURE

Be sure to follow procedure carefully and in the order given—otherwise the receiver will be insensitive and the dial calibration incorrect. For alignment procedure read tabulations from left to right. Make the adjustment marked (1) first, (2) next, (3) third.

Before starting alignment:

- (a) Check tuning dial adjustment by tuning gang condenser until plates touch maximum capacity stop (completely in mesh) at which point the dial indicator must be exactly even with the center of the large 5 in the 55 calibration number at the low frequency end of the dial scale. If dial indicator does not point exactly to the center of the large 5, move to correct position.
- (b) Use an accurately calibrated test oscillator with some type of output measuring device.
- (c) WHEN ADJUSTING 1620 KC OSCILLATOR TRIMMER, remove chassis from cabinet and disconnect the loop connection wires from the loop. Attach a 1 megohm resistor across these connections and feed output of test oscillator across the 1 megohm resistor.
- (d) THE 1400 KC LOOP ANTENNA TRIMMER should be adjusted only after all other adjustments have been made and with the set mounted in the cabinet, and the loop in an upright position. When aligning the 1400 KC Antenna Trimmer, couple test oscillator to receiver loop by: (1) make loop consisting of five to ten turns of No. 20 to No. 30 size wire, wound on a 2" or 3" form; (2) connect this loop across output of test oscillator; (3) place test oscillator loop near radio loop. BE SURE THAT NEITHER LOOP MOVES WHILE ALIGNING.

MISCELLANEOUS PARTS

Part No.	Part Name	Description	List Price	Part Name	Description	List Price
20E144	"A" Batt. Bkt. Assem.	Complete "A" Batt. Assem.	.80	5E21	Line Cord Retainer	
5E19	"A" Batt. Bkt. Cont.	Battery Hold. Down and B.L. Dot. Slapper.	.50	51E4	Line Cord Shield	
20E265	"B" Batt. Conn.	Assembly with Loop Door.	.50	33E54	Shield Insulator	
20E145-1*	Cabinet	Cabinet with Loop Door. Mentions Required Color.	11.00	7E79	Speaker Baffle	
30E69*	Cabinet	Cabinet Less Door. Less Strap. Mention Required Color.	6.70	66E14-1	Strap	
7E77-1*	Cabinet Front	Cabinet Front Only. Mention Required Color.	3.65	58E32-1	Strap	
7E78-1*	Cabinet Back	Cabinet Back Only. Mention Required Color.	3.10	20E142-1	Strap	
20E145-1*	Cabinet Door	Door with Loop Assembly, Complete. Mention Required Color.	4.75	20E142-2	Strap	
20E147*	Cabinet Catch Assem.	Catch Assembly with No. 37E37-1 Slide Knob and 2 No. 82E163F10 Mounting Screws	.50	82E163F10	Screw	\$1.80/C
59E31*	Cabinet Strike	Strike Plate with 2 No. 82E163F10 Mounting Screws	.07	82E165F10	Screw	1.90/C
15E47	Clamp	For Line Cord with 2 No. 82E163F10 Mounting Screws	.03	82E172F10	Screw	.60/C
20E148*	Interlock Socket Assembly	Female Socket Assembly with 1 No. 82E163F10 Mounting Screw	.30	47E6	Pin	.65/C
30E31*	Interlock Plug Assembly	Male Plug Assembly with 1 No. 82E163F10 Mounting Screws	.25	26E35-2	Lug	1.15/C
37E37-1*	Knob	Slide Knob	.17	26E35-1	Lug	1.20/C
37E38-1*	Knob	Slide Knob	.30	65E10	Spring	4.70/C
27E38-1*	Knob	Calligraph Dial Knob	.22	12E115	Washer	1.16/C
27E39-1*	Knob	Timing and Volume	.32	14E21	Eyelite	.65/C
		Selector Switch, "OFF-AC-DC-BATT."	.32	15E85	Clip	1.60/C

* Fast Moving Items.

Loop Door on 4-C-1

Complaint - Poor or Intermittent Reception due to open Loop Antenna.

Cause - Loop Antenna breaks at soldered connection.

Suggested Action:

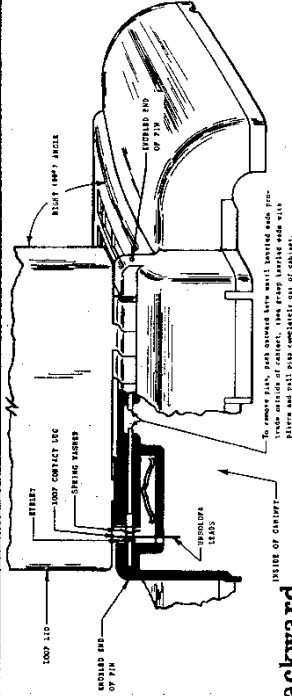
It is advisable to purchase the complete loop assembly Part No. 20E145-1 and replace old one as described below.

The serviceman should not attempt to replace just a part of the loop assembly. The loop assembly consists of an inner and outer bakelite section and a loop coil. To make the loop assembly fit properly it is necessary to assemble the two bakelite sections at the same time. These sections are mates and must then be used together.

Installation of a new loop coil only is very difficult. The leads must be placed in the proper location and waxed in position, and it would be very easy to crush the loop coil when fitting the two bakelite sections together.

HARDWARE
No. 4-24x1/4 Rec. B.H. \$1.80/C
No. 4-24x3/8 Rec. B.H. 1.90/C
No. 4-3/16 Hex Hd. No Slot Type Z
Sheet Metal
No. 6-3/16 Hex Hd. No Slot Type Z
Sheet Metal
For Door Hinge Each .04
Contact Lug for Loop-Door Assembly .. 1.15/C
Index Spring for Loop-Door Assembly .. 4.70/C
Spring Washer for Loop-Door Assembly .. 1.16/C
For Loop-Door Assembly65/C
Speaker Mtg. Clip

MODEL 4-C-1,
Code 291-7-564



To Remove Lid From Cabinet

- (a) Open Cabinet
- (b) Remove chassis mounting screws and swing chassis slightly backward.
- (c) Unsolder the leads from the two lid lugs that project through the cabinet.
- (d) Observe position of curved pressure springs, because these must be put back in same position should they fall out during installation of new lid. Remove lid pins -- see drawing for directions-- and gently separate lid from cabinet.
- (e) To avoid damaging chassis, speaker, etc., it is advisable to remount chassis in cabinet with two screws while re-installing lid.

To Install Lid on Cabinet

- NOTE:** Do not remove tape around right and left corners of lid until it is completely installed.
- (a) Carefully pull pins out of replacement lid - be sure to leave lugs with washers and eyelets in lid exactly as shipped.
 - (b) Place both pairs of curved pressure springs in original position.
 - (c) Hold lid at right angle to front of cabinet, as shown on drawing, and feed the two lugs on lid into the two narrow slots located adjacent to the curved pressure springs, pressing inward until lid is in place. Important - keep lugs, washers and eyelets snug against lid otherwise they will jam on cabinet and prevent lid from being inserted all the way.
 - (d) Line up holes in lid and cabinet and gently push pins through these holes until end of pin is flush with edge of cabinet.
 - (e) Remove chassis mounting screws, and swing chassis back slightly. Resolder leads to the two lid lugs and remount chassis with chassis mounting screws.
 - (f) Remove tape around left and right corners of lid.

NOTE: The new loop assembly comes equipped with a longer lug. The longer lug is designed to overcome poor or intermittent reception which occurs when the lead wire is broken. Only a small quantity of these radios were produced with the short lug. Recent production comes equipped with the longer lug.