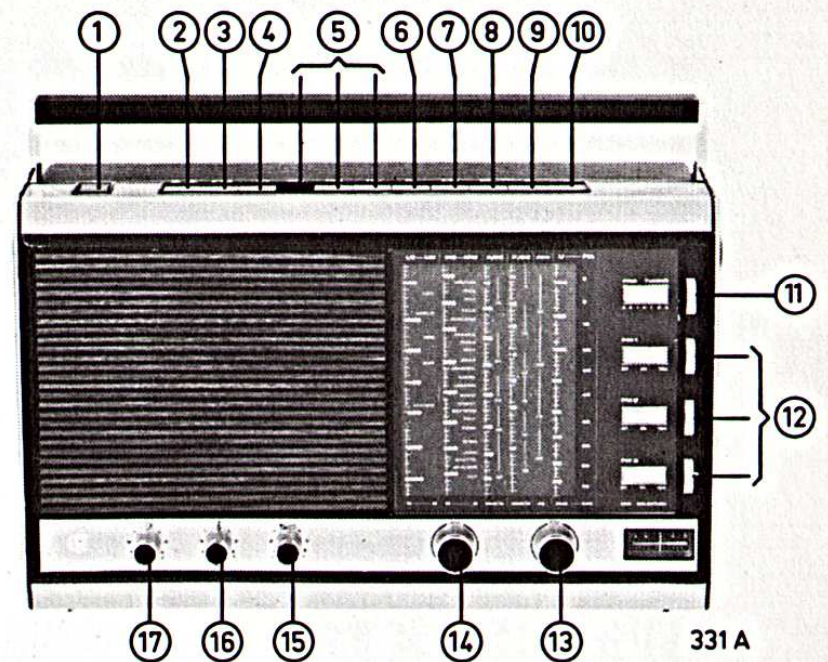


Service manual



Radiola



Dimensions: 370x226x85 mm

<p>① Aerial ejector Antenne-uitwerper Ejecteur d'antenne Antennenauswerfer Espulsore d'antenna Antennnutlösare Antenneudløser Antenneutløser Antennin avaja</p>	<p>⑥ FM switch FM-schakelaar Commutateur FM UKW-Schalter Commutatore FM FM-omkopplare FM-omskifter FM-vender ULA-kytkin</p>	<p>SK-G</p>	<p>⑫ Preset tuning FM Voorkeuze-instelling FM Préselection FM Vorwahl-Einstellung FM R414 Preselezione FM R415 FM-avstämning/förinställning R416 FM-afstemning/forindstilling FM-avstemning ULA-viritys</p>
<p>② Scale illumination + battery check Schaalverlichting + batterijcontrole Eclairage du cadran + contrôle de la pile Skalenbeleuchtung + Batteriekontrolle Illuminazione della scala + controllo della pila SK-A Skalabelysning + batterikontroll Skalabelysning + batterikontroll Skalabelysning + batterikontroll Asteikkovalo + pariston tarkistus</p>	<p>⑦ SW2 switch KG2-schakelaar Commutateur OC2 KW2-Schalter Commutatore OC2 KV2-omkopplare KB2-omskifter KB2-vender LA2-kytkin</p>	<p>SK-H</p>	<p>⑬ Tuning FM Afstemming FM Syntonisation FM Abstimmung UKW Sintonia FM R417 FM-avstämning Afstemning FM FM-avstemning ULA-viritys</p>
<p>③ PU/rec. switch PU/rec. schakelaar Commutateur PU/magn. TA/Grammofonschalter Commutatore PU/reg. Grammofonomkopplare Gram./båndopt. omskifter PU/Optaker-vender PU/Nahuri-kytkin</p>	<p>⑧ SW1 switch KG1-schakelaar Commutateur OC1 KW1-Schalter Commutatore OC1 KV1-omkopplare KB-omskifter KB1-vender LA1-kytkin</p>	<p>SK-J</p>	<p>⑭ Tuning AM Afstemming AM Syntonisation AM Abstimmung AM Sintonia AM C405a-b AM-avstämning Afstemning AM AM-avstemning AM-viritys</p>
<p>④ AFC AFR CAF AFR AFK AFC AFC AFC</p>	<p>⑨ MW switch MG-schakelaar Commutateur PO MW-Schalter Commutatore OM MV-omkopplare MB-omskifter MB-vender KA-kytkin</p>	<p>SK-K</p>	<p>⑮ On/off+volume control Aan/uit+volumeregelaar Marche/arrêt+commande de volume Ein/Aus+Lautstärke-regler SK-O + R418 Interruttore marcia/fermo +comm.di volume Till/från + volymkontroll Afbrøder+styrkekontrol På/av+volumkontroll On/ei+voimakkuussäädin</p>
<p>⑤ Preset switch Voorkeuze schakelaar Commutateur préselection Vorwahlschalter Commutatore preselezione SK-D,E,F Ratt, förinställning Knap, forvælger Knapp, forvelger Nuppi, esivalinta</p>	<p>⑧ 49-metre band 49 meter band Bande des 49 mètres 49-Meter-Band Banda métrica 49 ⑨ 49-m-bånd 49-m band 49-meter bånd 49 m-nauhan leveys</p>	<p>SK-J + SK-K</p>	<p>⑯ Bass control Lage tonenregelaar Contrôle des graves Bassregler Controllo delle basse R420 Baskontroll Baskontroll Basskontroll Mataliensäädin</p>
	<p>⑩ LW switch LG-schakelaar Commutateur GO LW-Schalter Commutatore OL LV-omkopplare LB-omskifter LB-vender PA-kytkin</p>	<p>SK-L</p>	<p>⑰ Treble control Hoge tonenregelaar Contrôle des aigues Hochtonregler Controllo delle alte R419 Diskantkontroll Diskantkontroll Diskantkontroll Korkeldensäädin</p>
	<p>⑪ Fine tuning SW Fijn afstemming KG Syntonisation fin OC Feinabstimmung KW Regolazione fine OC Finavstämning LV Finafstemning LB Finavstemning LB PA-hienoviritys</p>	<p>R402</p>	

Index: CS36898, CS30764-CS30768, CS36899-CS36901

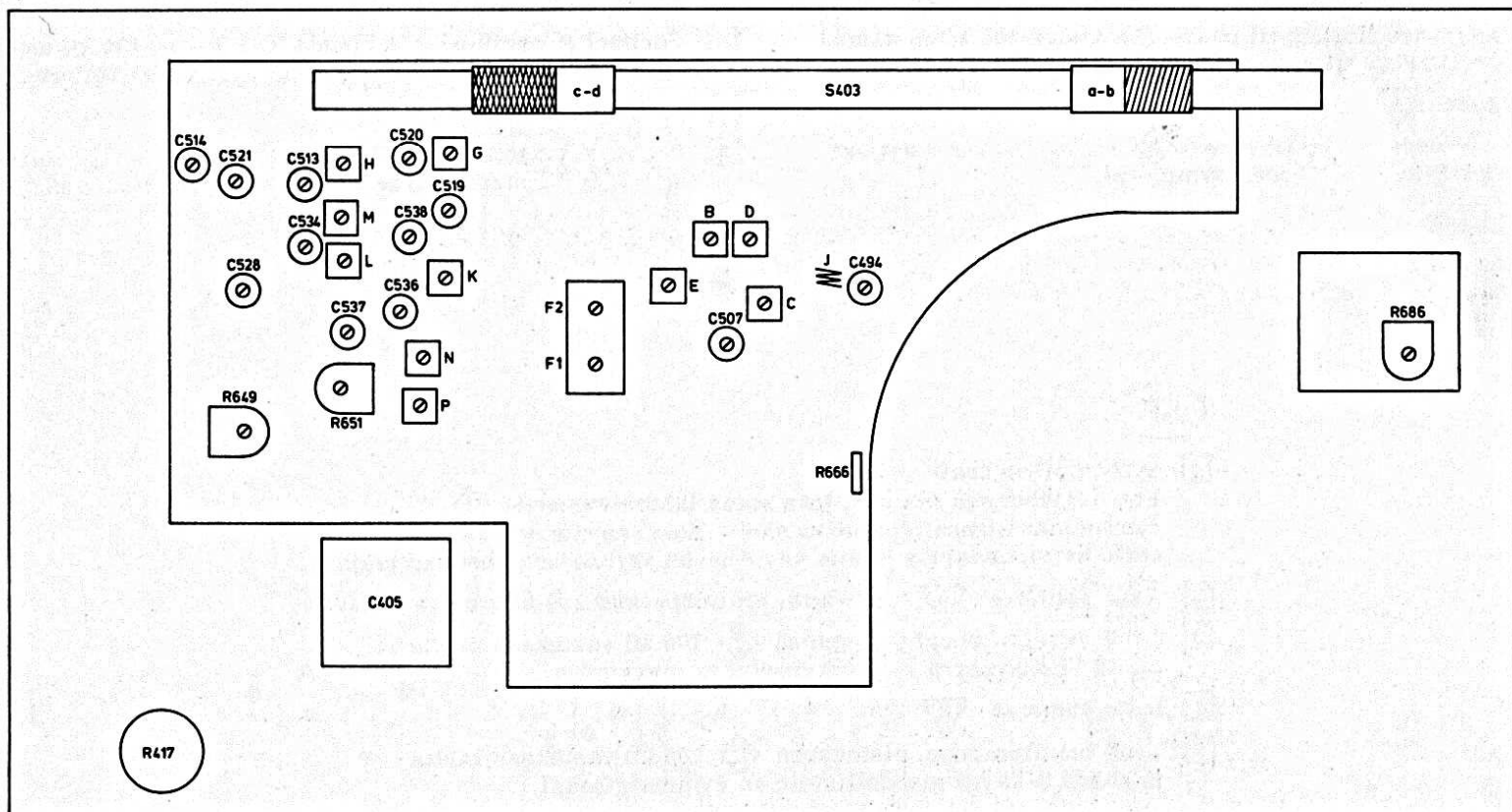
SERVICE

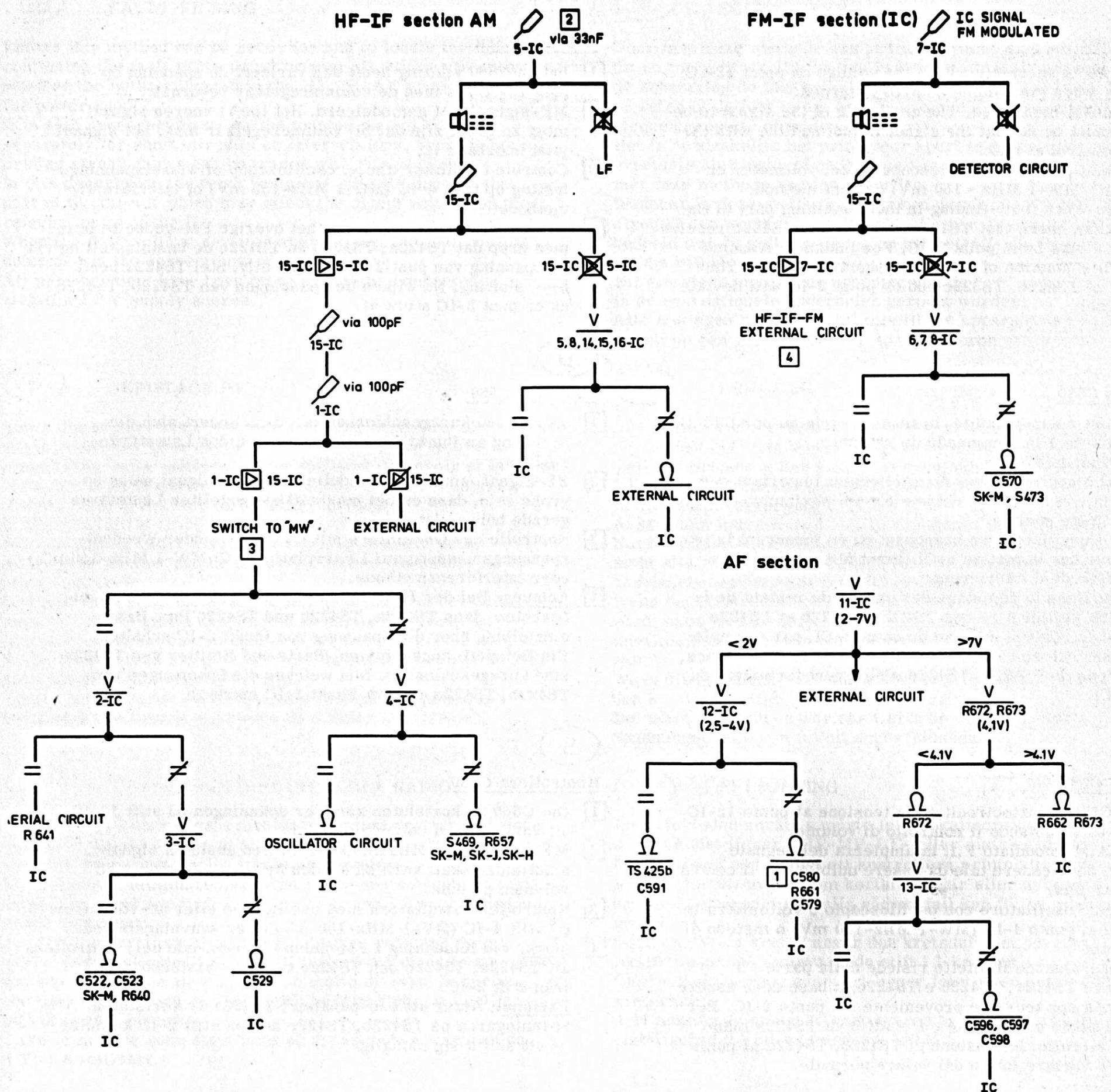
Subject to modification

4822 725 11085

Printed in the Netherlands


Wave range	Signal to		Var. cap.	Detune	Adjust	Indication
SK....						
MW (517-1622 kHz)	1 /33 nF		min.	F1 F2	F1 F2	 max.
MW (517-1622 kHz)	512 kHz		max.		M	max.
	1635 kHz		min.		C538	
	550 kHz				S403 a-b	
	1500 kHz				C521	
Repeat - Herhalen - Répéter - Wiederholen - Repftanse - Ripetere - Repetera - Gentage - Gjntagelse - Toista						
LW (148,5-262,5 kHz)	147 kHz		max.		C534	max.
	155 kHz				S403 c-d	
	260 kHz				C514	
Repeat - Herhalen - Répéter - Wiederholen - Repftanse - Ripetere - Repetera - Gentage - Gjntagelse - Toista						
SW1 (2,18-6,26 MHz)	2,15 MHz		max.		L	max.
	6,325 MHz		min.		C537	
	2,32 MHz				M	
	5,88 MHz				C520	
Repeat - Herhalen - Répéter - Wiederholen - Repftanse - Ripetere - Repetera - Gentage - Gjntagelse - Toista						
SW2 (7,03-21,97 MHz)	6,95 MHz		max.		L	max.
	22,2 MHz		min.		C536	
	7,6 MHz				G	
	20,66 MHz				C519	
Repeat - Herhalen - Répéter - Wiederholen - Repftanse - Ripetere - Repetera - Gentage - Gjntagelse - Toista						
49 m (5,89-6,26 MHz)	5,84 MHz		max. 		C528 C513	max.
Repeat - Herhalen - Répéter - Wiederholen - Repftanse - Ripetere - Repetera - Gentage - Gjntagelse - Toista						
FM (87,0-104,5 MHz) /07: (87,0-108 MHz)	2 10,7 MHz /4,7 nF		min.		B D E P	
					N	
					E	
					B	
		4			D	
FM (87,0-104,5 MHz) /07: (87,0-108 MHz)	86,5 MHz		max.		C	max.
	105, MHz (/07:): 109 MHz		min.		J	
					C507 C494	
Repeat - Herhalen - Répéter - Wiederholen - Repftanse - Ripetere - Repetera - Gentage - Gjntagelse - Toista						







424 C


	V	=	≠	Ω					
(GB)	Voltage measurement	No deviation	Deviation	Ohmic measurement	Inject	Amplified	Does not amplify	Weak sound	No sound
(NL)	Spanningsmetingen verrichten	Geen afwijking	Wel afwijking	Ohmse metingen verrichten	Injecteren	Versterkt	Versterkt niet	Zwak geluid	Geen geluid
(F)	Procéder aux mesures de tension	Pas de différence	Différence	Procéder aux mesures ohmiques	Injecter	Amplifié	N'amplifie pas	Faible son	Pas de son
(D)	Spannung messen	Keine Abweichung	Abweichung	Widerstand messen	Einspeisen	Verstärkt	Verstärkt nicht	Schwacher Ton	Kein Ton
(I)	Misura di tensione	Nessuna indicazione	Con indicazione	Misura ohmica	Iniettare un segnale	Amplificatore	Senza amplificatore	Suono debole	Senza suono
(S)	Spänningsmätning	Skiljer sig inte	Skiljer sig	Ohmmätning	Injicera	Förstärker	Förstärker inte	Svagt ljud	Inget ljud
(DK)	Spændingsmåling	Ingen afvigelse	Afvigelse	Ohm-måling	Tilfør signal	Forstærkning	Ingen forstærkning	Svag lyd	Ingen lyd
(N)	Foreta spenningsmålinger	Ingen avvikelser	Stor avvikelser	Foreta ohmmålinger	Tilfør injektor-signal	Forsterkning	Ingen forsterkning	Svak lyd	Ingen lyd
(SF)	Suorita jännitemittaus	Ei poikkeamaa	Poikkeama	Suorita vastusmittaus	Syötä	Vahvistaa	Ei vahvista	Heikko ääni	Ei ääntä


-S-			
		abcd	
S403			4822 158 60297
S404			4822 240 20114
S408			4822 145 30114
S409			4822 157 50714
S454	501-		4822 153 60088
S458			4822 156 10385
S410			4822 526 10016
S459	501-		4822 153 60088
S460	06--		4822 153 50102
S463	351-		4822 156 40321
S464	051		4822 156 40322
S466	082-		4822 156 30397
S468	903-		4822 156 30403
S469	131-		4822 156 30104
S470			4822 157 50101
S471			4822 157 50716
S473	86--		4822 153 10098
S474	96--		4822 153 10099
S476,461,477			4822 157 50094
S454	Toko		4822 153 50115 <small>MM</small>
S459	Toko		4822 153 50115 <small>MM</small>
S460	Toko		4822 153 50113 <small>MM</small>
S473	Toko		4822 153 50105 <small>MM</small>
S474	Toko		4822 153 50106 <small>MM</small>
S475			4822 156 30418
S479			4822 156 30417

MM To be used together, see also circuit diagram

-C-			
C405			4822 125 20176
C494	5 pF	2 %	4822 125 50006
C495	470 pF	2 %	4822 122 30034
C502	4700 pF	10 %	4822 122 30129
C503	330 pF	2 %	4822 122 30055
C506	4700 pF	10 %	4822 122 30129
C507	5 pF		4822 125 50006
C508	750 pF	2,5 %	4822 121 50427
C513	20 pF		4822 125 50029
C514	20 pF		4822 125 50029
C515	120 pF	2 %	4822 122 30093
C516	15 pF		4822 122 30097
C519	10 pF		4822 125 50026
C520	10 pF		4822 125 50026
C521	20 pF		4822 125 50029
C525	4.7 nF	10 %	4822 122 30129
C528	20 pF		4822 125 50029
C530	2200 pF	2,5 %	4822 121 50372
C532	390 pF	1 %	4822 121 50418
C533	320 pF	1 %	4822 121 50043
C534	20 pF		4822 125 50029
C536	10 pF		4822 125 50026
C537	10 pF		4822 125 50026
C538	20 pF		4822 125 50029
C539	27 pF	2 %	4822 122 30045
C540	27 pF	2 %	4822 122 30045
C542	22 nF - 20 + 100 %		4822 122 30103
C550	560 pF	1 %	4822 121 50061
C552	10 nF - 20 + 100 %		4822 122 30043
C553	10 nF - 20 + 100 %		4822 122 30043
C557	2200 pF	10 %	4822 122 30114
C560	1500 pF	10 %	4822 122 10042
C561	1500 pF	10 %	4822 122 10042
C563	3900 pF	10 %	4822 122 30098
C564	22 nF - 20 + 100 %		4822 122 30103
C565	22 nF - 20 + 100 %		4822 122 30103
C570	10 nF - 20 + 100 %		4822 122 30043
C582	3900 pF	10 %	4822 122 30098
C591	1000 pF	10 %	4822 122 30027
C595	560 pF	10 %	5322 122 30115
C599	22 nF - 20 + 100 %		4822 122 30103
C604	22 nF - 20 + 100 %		4822 122 30103
C609	1000 pF	10 %	4822 122 30027
C610	1000 pF	10 %	4822 122 30027
C611	1000 pF	10 %	4822 122 30027
C612	1000 pF	10 %	4822 122 30027
C548	150 pF	2 %	4822 122 30002

-R-			
R402	220 Ω		4822 101 20427
R414	100 kΩ		4822 101 20408
R415	100 kΩ		4822 101 20408
R416	100 kΩ		4822 101 20408
R417	100 kΩ		4822 101 90049
R418	37 + 10 kΩ		4822 101 50163
R419	100 kΩ		4822 101 30268
R420	470 Ω (anti - log.)		4822 101 30269
R649	1 kΩ		4822 100 10037
R651	10 kΩ		4822 100 10035
R666	220 Ω		4822 100 10026
R667	130 Ω NTC		4822 116 30016
R686	22 kΩ		4822 100 10051

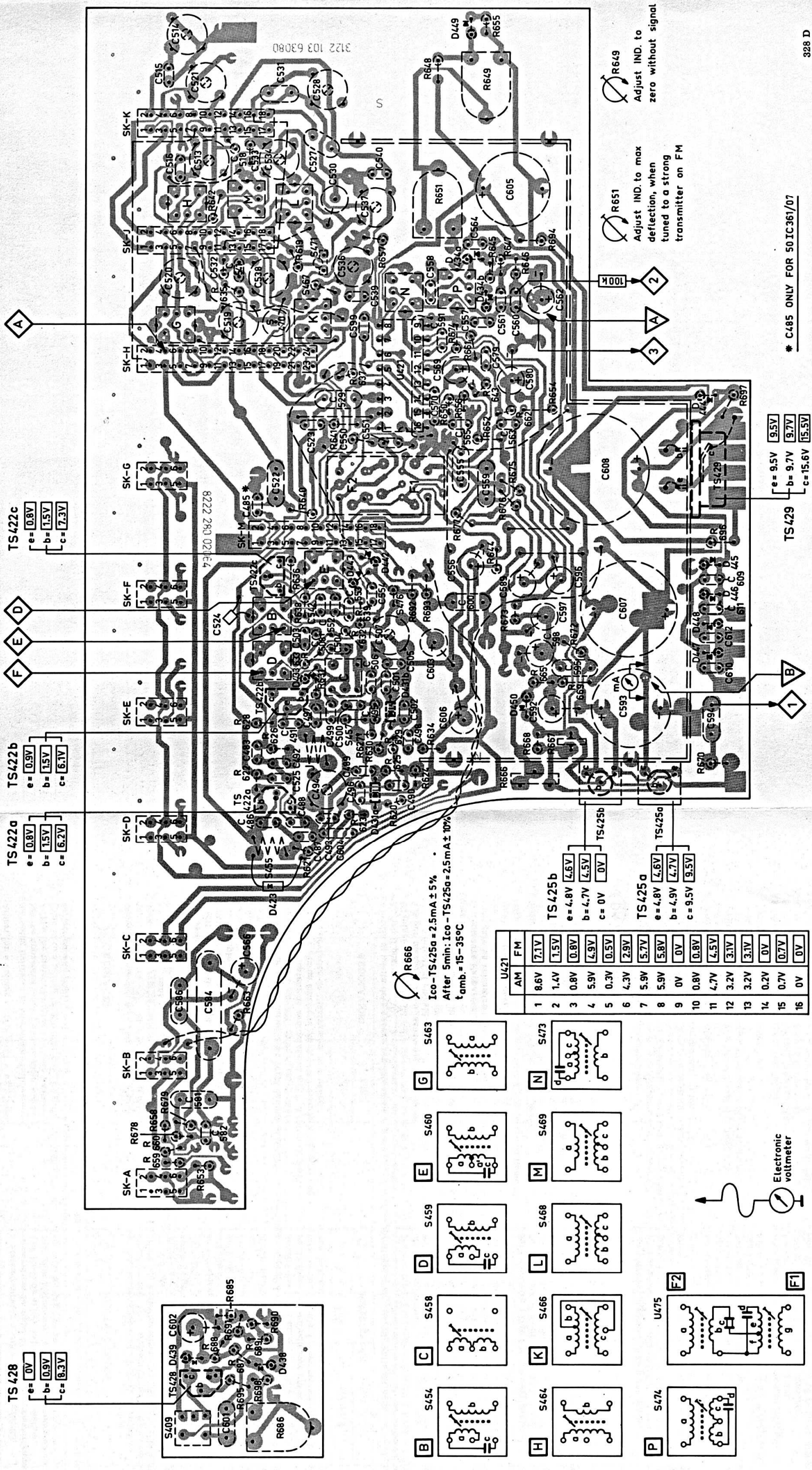
-TS-			
TS422a	BF194b	} 40820	4822 130 40421
TS422b	BF195c		
TS422c	BF195d		
TS425a, b	AC187/01 } AC188/01 }		4822 130 40319
TS428	BC147a		4822 130 40214
TS429	AD161		4822 130 40212
TS431a, b	BB105a		4822 130 30537

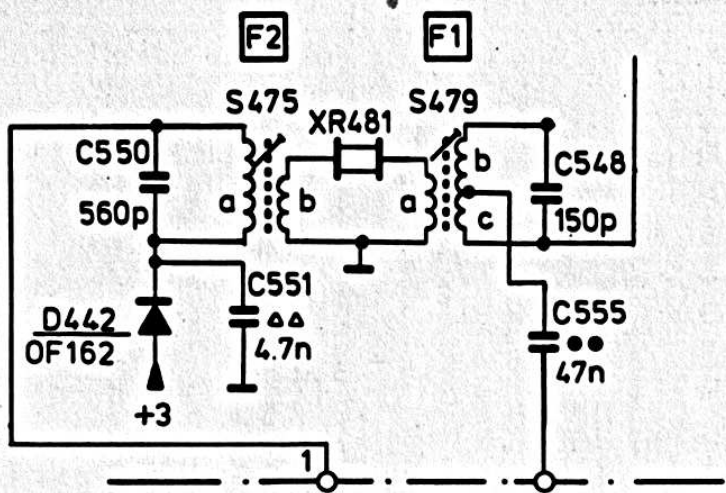
-D-			
D423	BA220		4822 130 40879
D433	AA119		5322 130 40229
D434a, b	2-AA119		4822 130 30312
D438	OF238		4822 130 30801
D439	BA100		5322 130 30226
D442	OF162		4822 130 30702
D443	OF162		4822 130 30702
D444	BZY88/C9V1		4822 130 30667
D445	BA148		5322 130 30256
D446	BA148		5322 130 30256
D447	BA148		5322 130 30256
D448	BA148		5322 130 30256
D449	OF162		4822 130 30702
D450	OF162		4822 130 30702

-Miscellaneous-

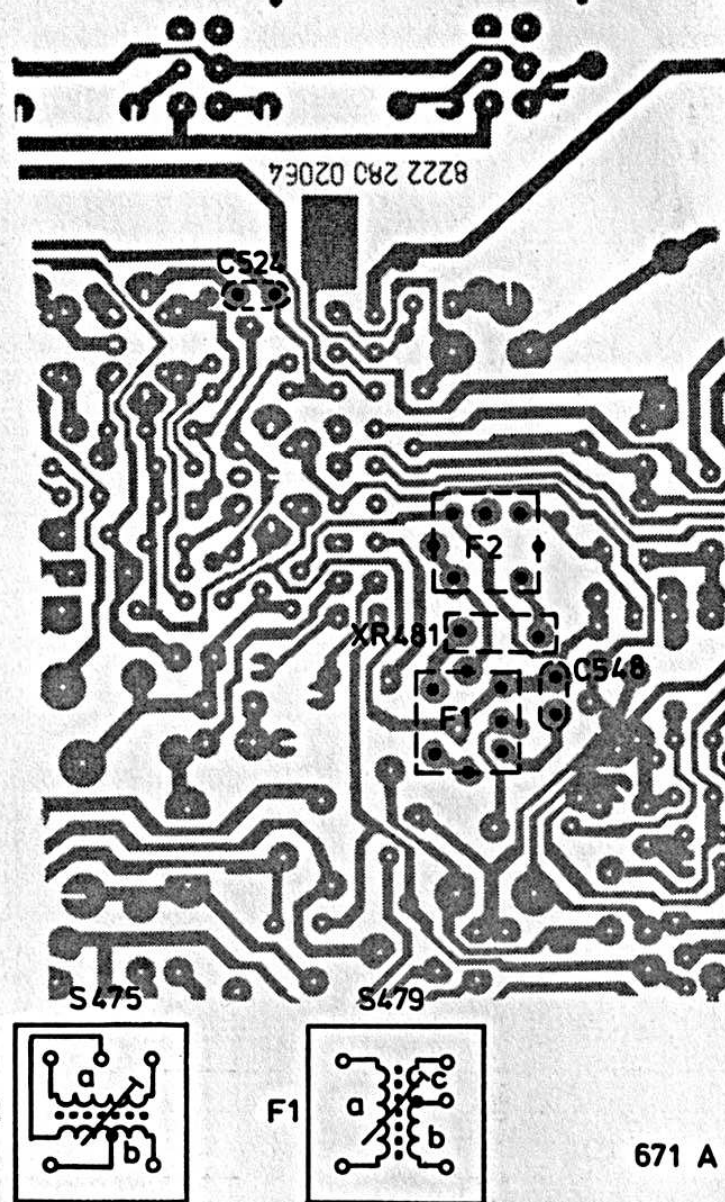
IND401		4822 347 10084
LA413	7999D 6,3 V 100 mA	4822 134 40005
U421	TBA 570	4822 209 80201
VL-1		4822 252 20007
K481	452 kHz	4822 242 70113

S	409	J	457	C	D	B	476	E	F2	F1	K	470	G	N	P	H	M	L	S	
C	601																			C
C	602																			C
C	603																			C
C	604																			C
C	605																			C
R	606																			R
R	607																			R
R	608																			R
R	609																			R
R	610																			R
R	611																			R
R	612																			R
R	613																			R
R	614																			R
R	615																			R
R	616																			R
R	617																			R
R	618																			R
R	619																			R
R	620																			R
R	621																			R
R	622																			R
R	623																			R
R	624																			R
R	625																			R
R	626																			R
R	627																			R
R	628																			R
R	629																			R
R	630																			R
R	631																			R
R	632																			R
R	633																			R
R	634																			R
R	635																			R
R	636																			R
R	637																			R
R	638																			R
R	639																			R
R	640																			R
R	641																			R
R	642																			R
R	643																			R
R	644																			R
R	645																			R
R	646																			R
R	647																			R
R	648																			R
R	649																			R
R	650																			R
R	651																			R
R	652																			R
R	653																			R
R	654																			R
R	655																			R
R	656																			R
R	657																			R
R	658																			R
R	659																			R
R	660																			R
R	661																			R
R	662																			R
R	663																			R
R	664																			R
R	665																			R
R	666																			R
R	667																			R
R	668																			R
R	669																			R
R	670																			R
R	671																			R
R	672																			R
R	673																			R
R	674																			R
R	675																			R
R	676																			R
R	677																			R
R	678																			R
R	679																			R
R	680																			R
R	681																			R
R	682																			R
R	683																			R
R	684																			R
R	685																			R
R	686																			R
R	687																			R
R	688																			R
R	689																			R
R	690																			R
R	691																			R
R	692																			R
R	693																			R
R	694																			R
R	695																			R

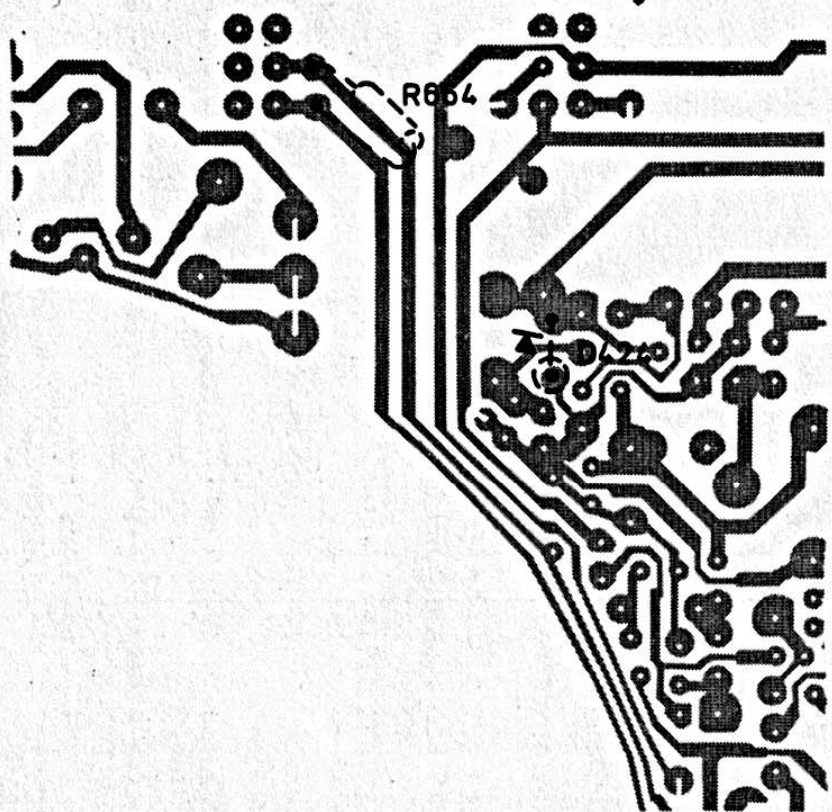




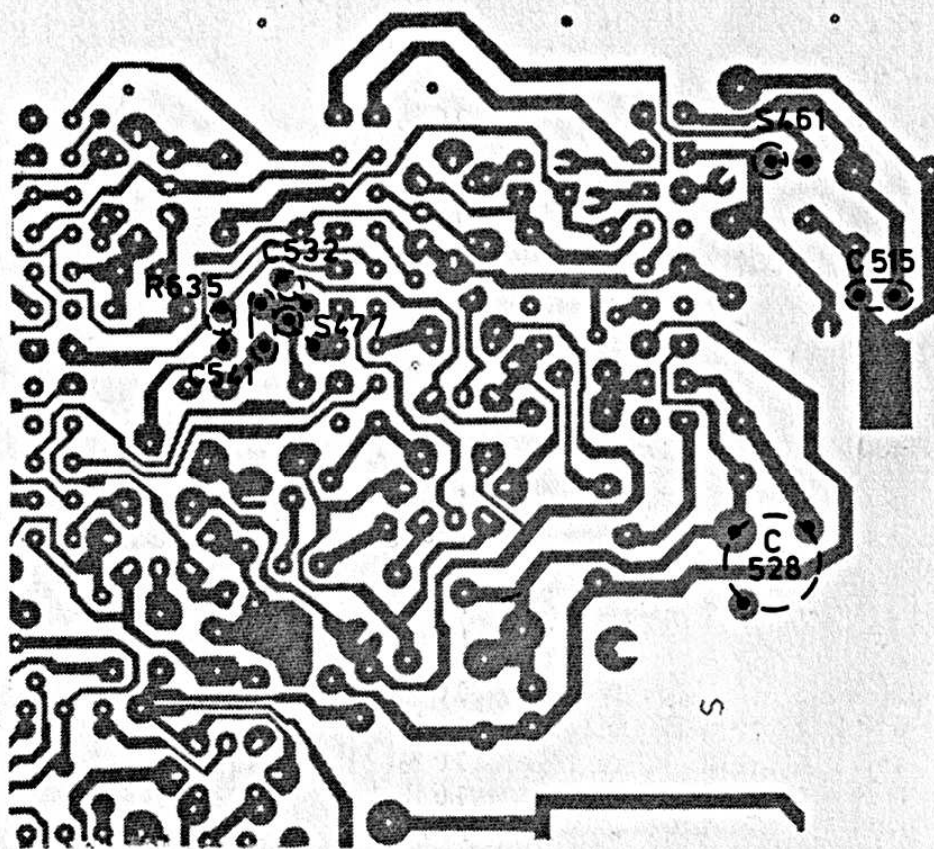
669 A



671 A



670 A



672 A

Fig. A

