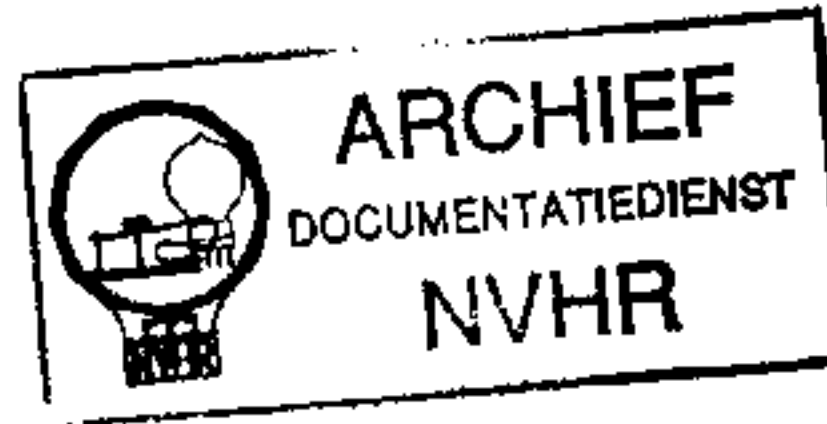


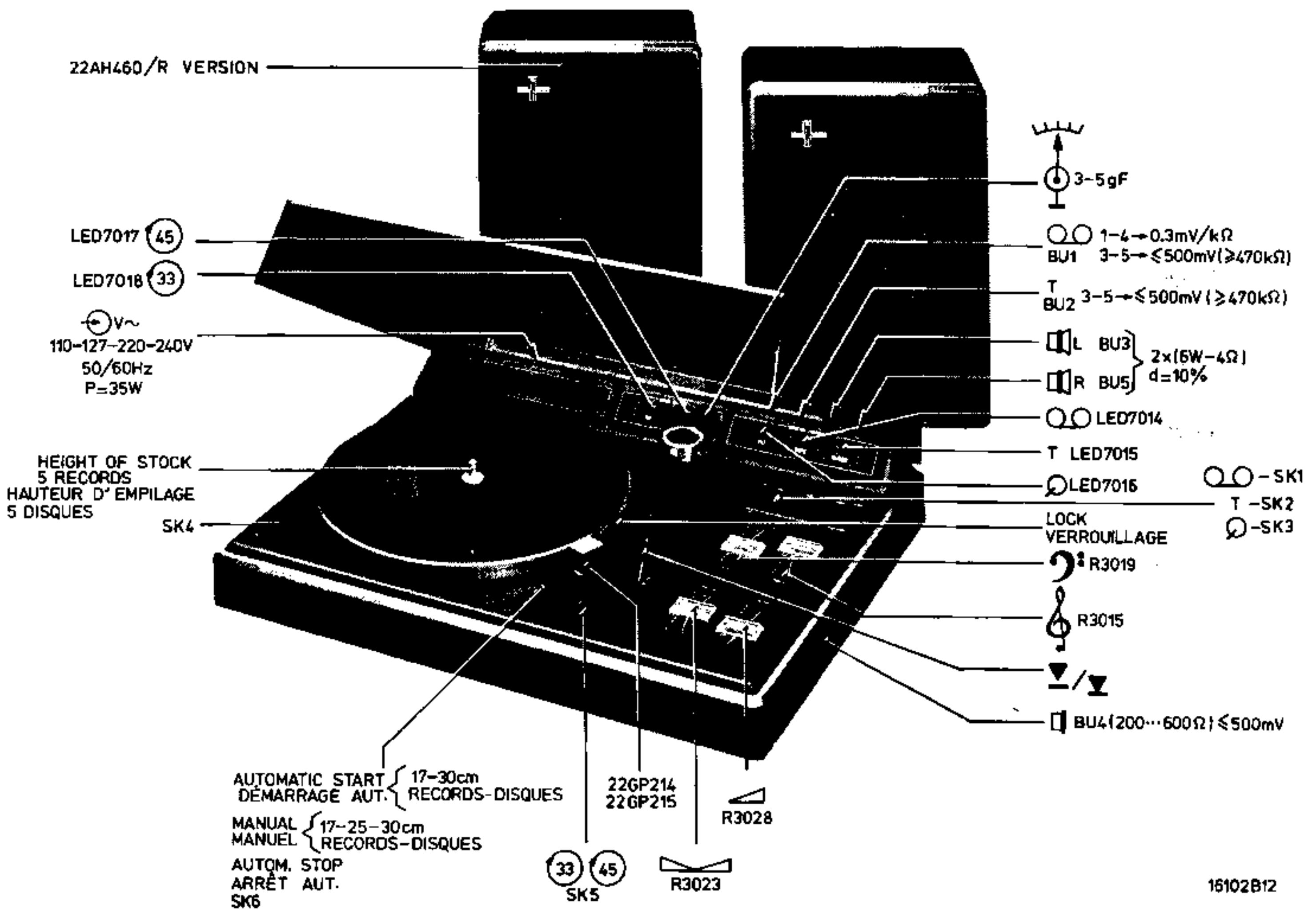
Service  
Service  
Service

Ned. Ver. v. Historie v/d Radio



# Service Manual

For description of the operation see 22AF073/00 part I  
Pour le description du fonctionnement, voir 22AF073 partie I



Wow and flutter.  
Pleurage et scintillement  $\leq 0.2\%$   
Dimensions = 508x407x141 mm.

Documentation Technique Service Dokumentation Documentazione di Servizio Huolto-Ohje Manual de Servicio Manual de Servicio



Subject to modification  
4822 725 12956  
Printed in The Netherlands

**PHILIPS**

MECHANICAL ADJUSTMENTS  
REGLAGES D'ORDRE MECANIQUE

TURNTABLE HEIGHT  
HAUTEUR DU PLATEAU

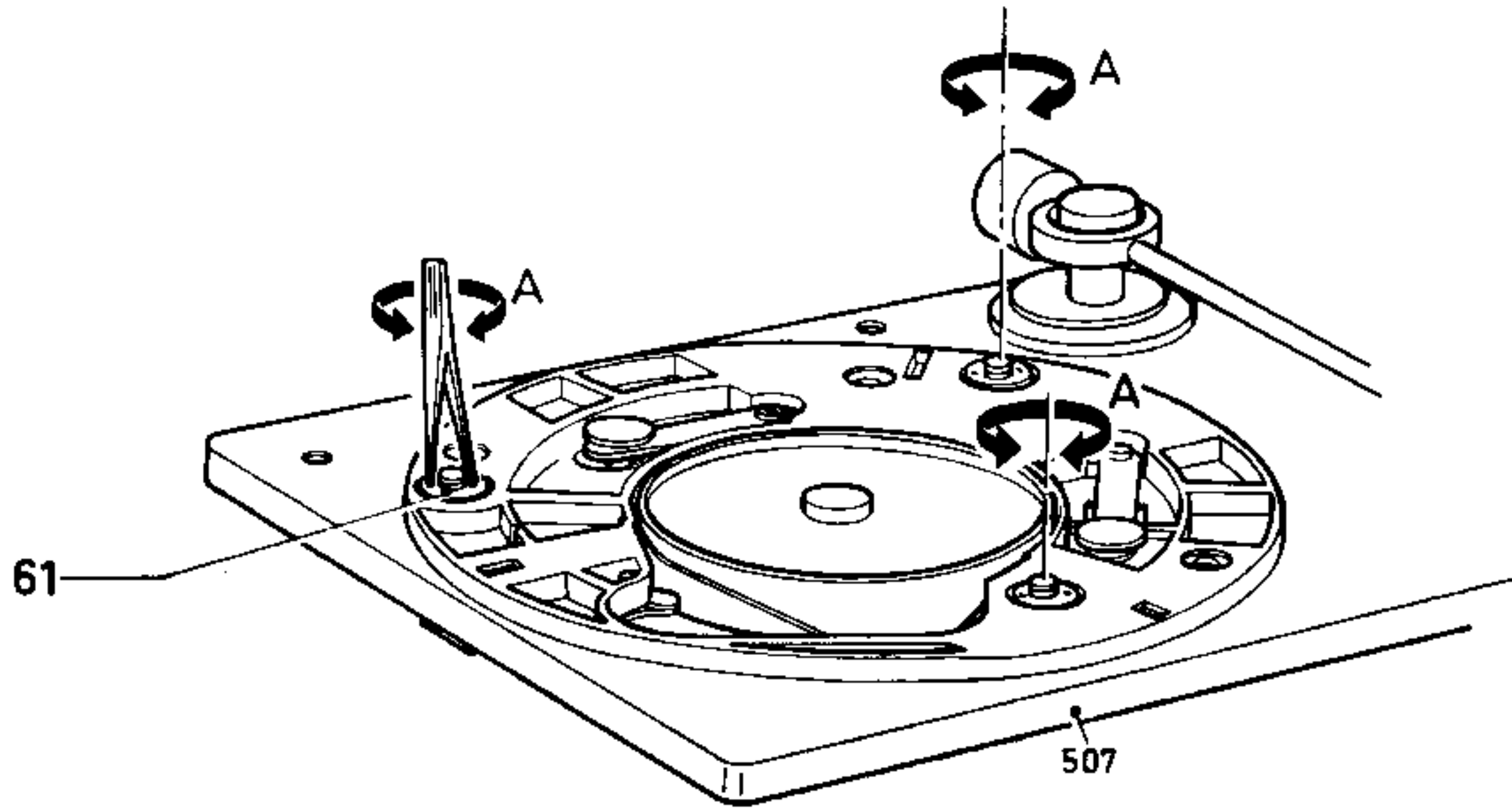
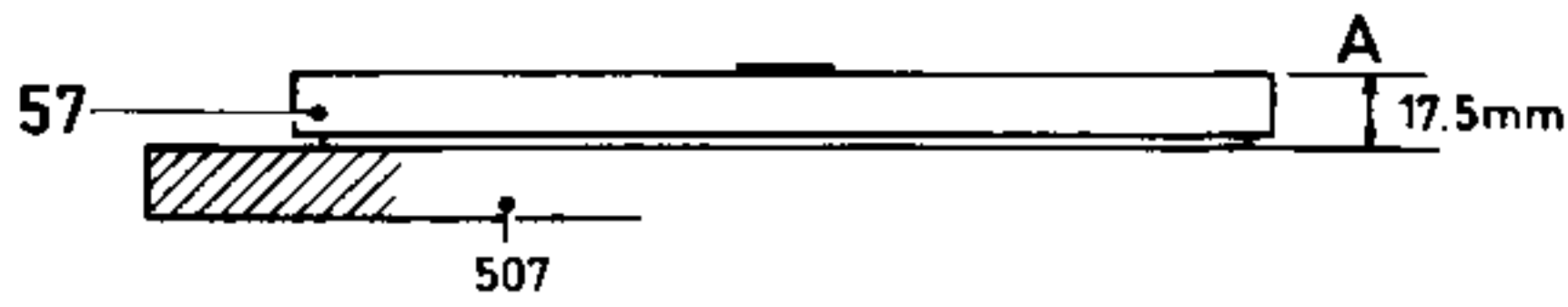
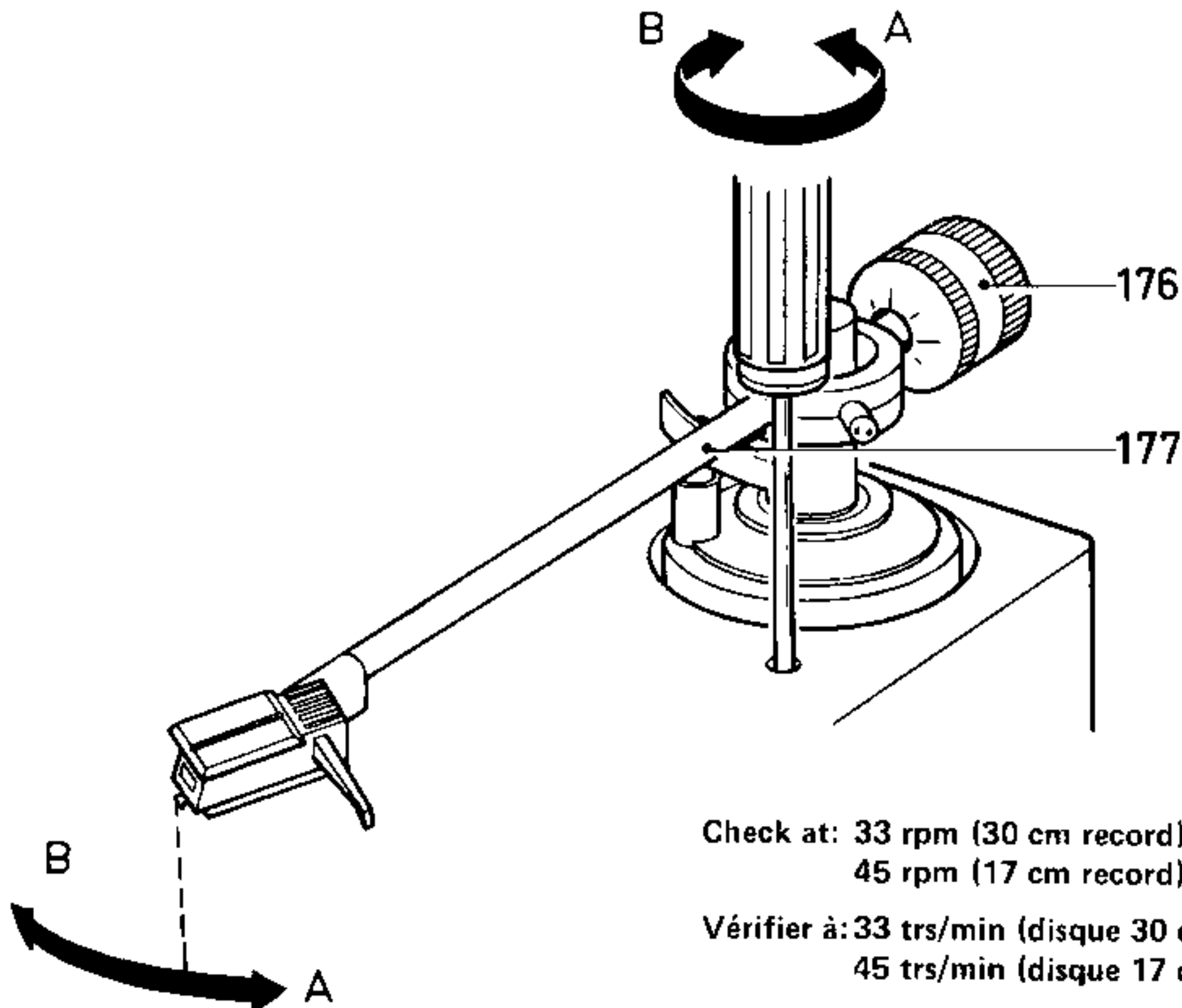


Fig. 1

15860B12

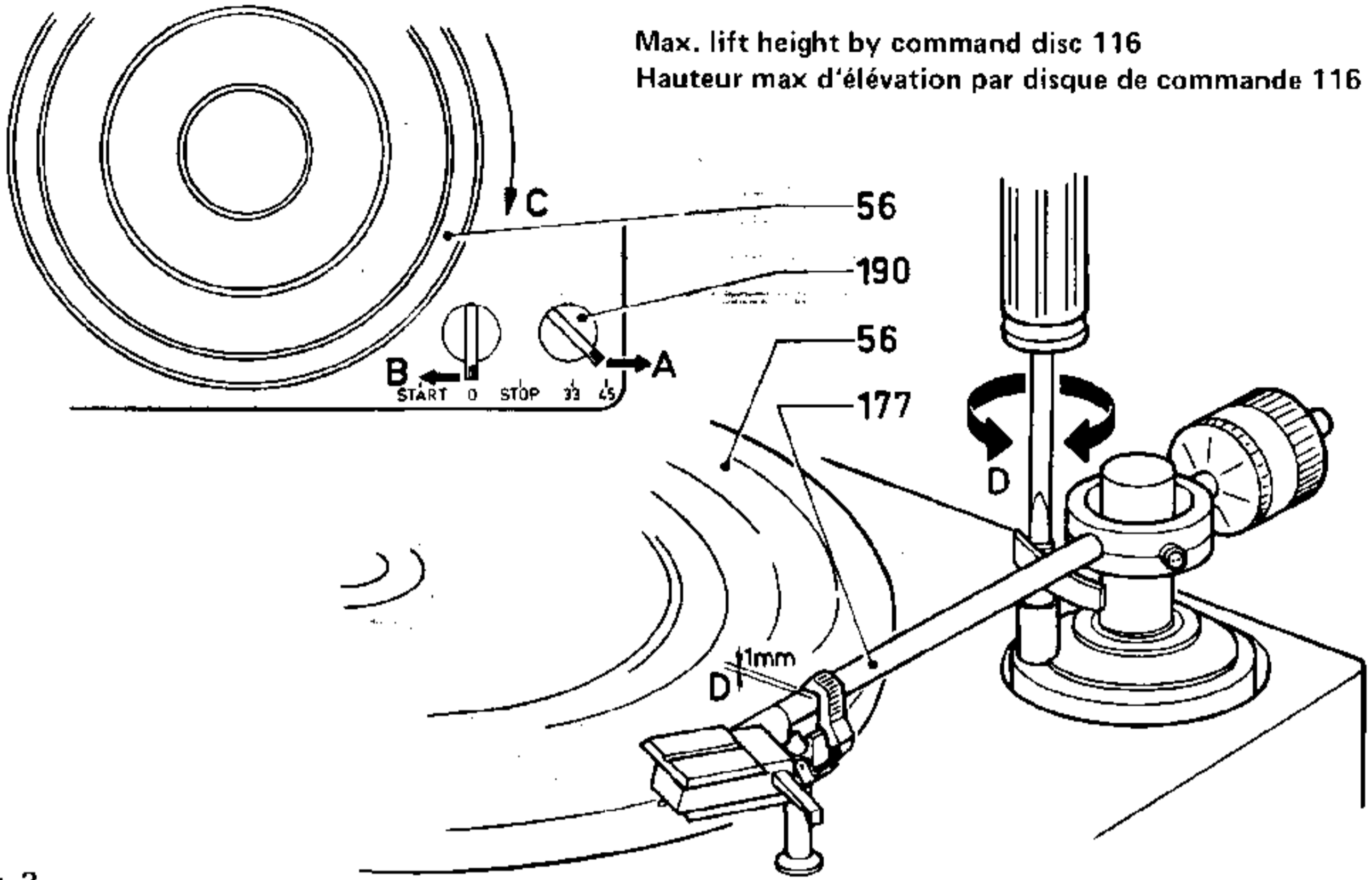
AUTOMATIC SETTING DOWN  
POSE AUTOMATIQUE



15862B12

Fig. 2

# 1 LIFT AUTOMATIC LEVIER AUTOMATIQUE



Max. lift height by command disc 116  
Hauteur max d'élevation par disque de commande 116

Fig. 3

15883B12

# 2 LIFT MANUAL LEVIER MANUEL

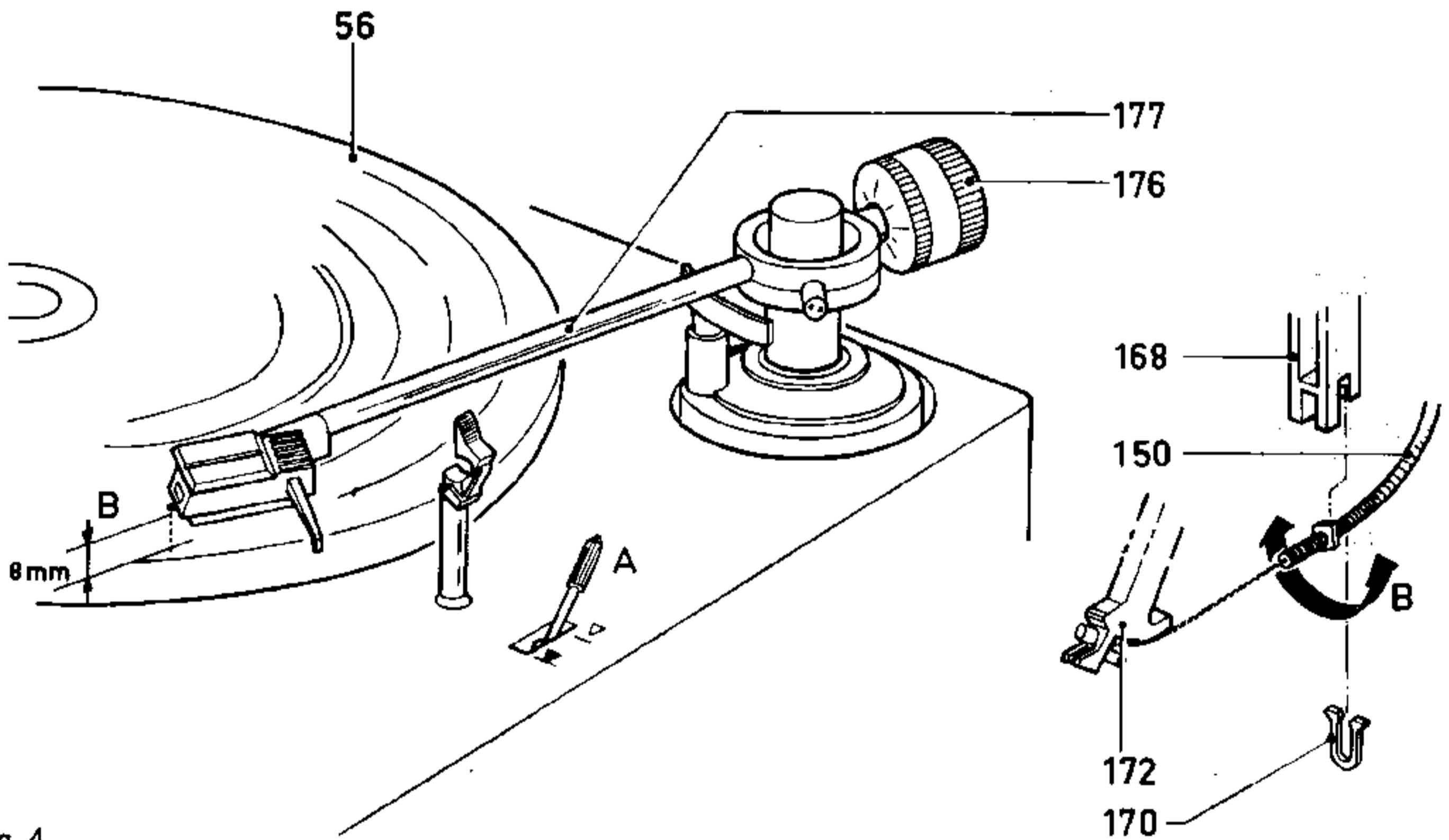


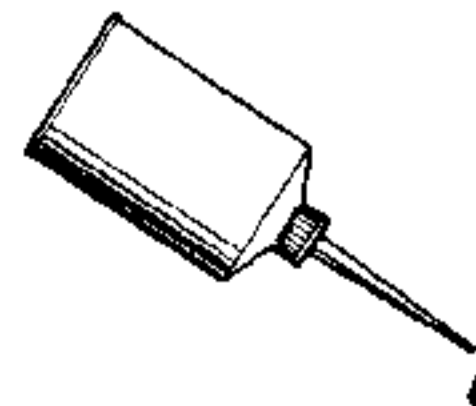
Fig. 4

15881B12

## LUBRICATING INSTRUCTION (Fig. 9) INSTRUCTIONS DE LUBRIFICATIONS (Fig. 9)

- (A) All purpose oil  
4822 390 10048  
Items 62,63,70,  
141,193,196
- (B) Shell Alvania II  
4822 389 10001  
Items 127,130
- (C) Silicone grease medium 300  
4822 390 20031  
Items 110,152,162,  
163,508,515

- (D) Lubricant 10  
4822 390 10003  
Items 96, 512
- (E) Silicone fluid 60.000 cst  
4822 390 10045  
Item 148



**SWITCH 147**  
**COMMUTATEUR 147**

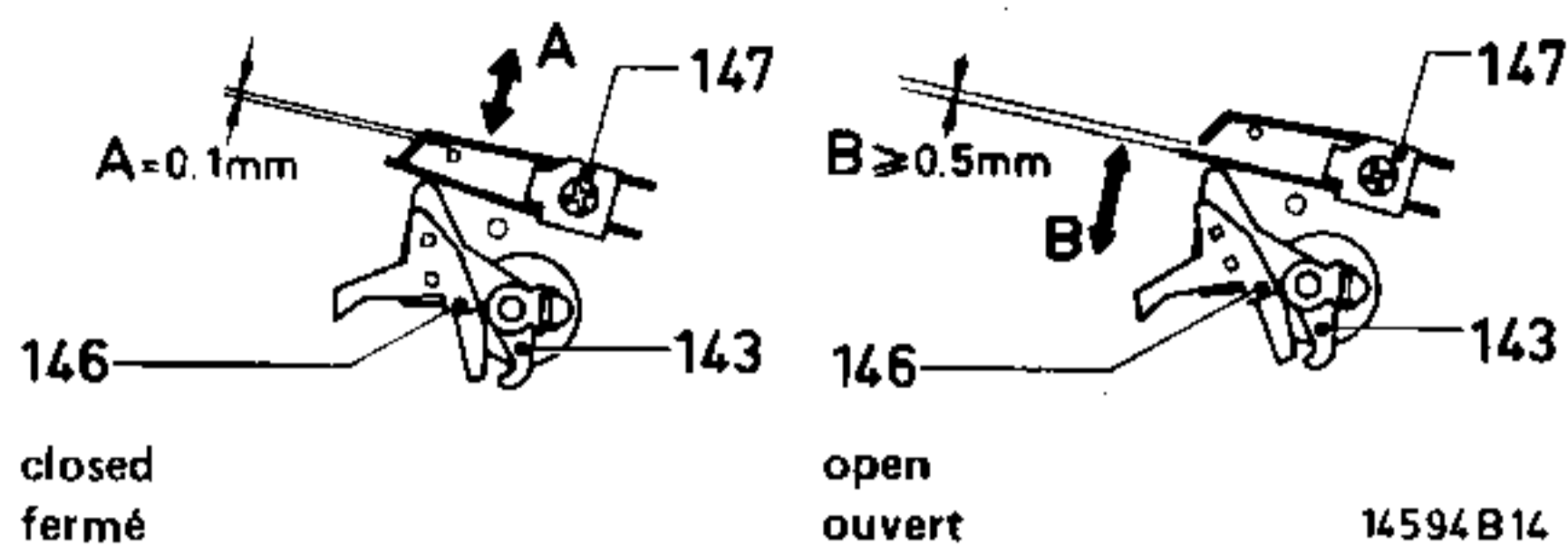


Fig. 5

**MUTING SWITCH 98**  
**INTERRUPTEUR DE COURT CIRCUIT 98**

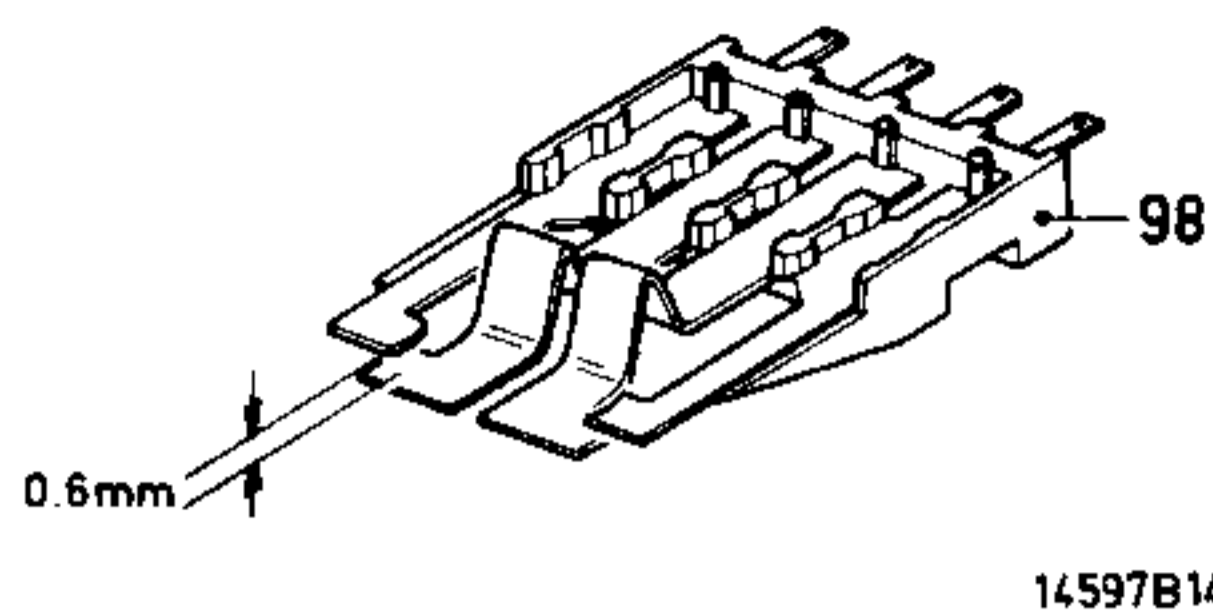


Fig. 6

**REPAIR HINTS**  
**CONSEILS REPARATION**

**MOUNTING CLAMPING RING 58 AND SPINDLE 53**  
**MONTAGE DE L'ANNEAU DE SERRAGE 58 ET DE L'AXE 53**

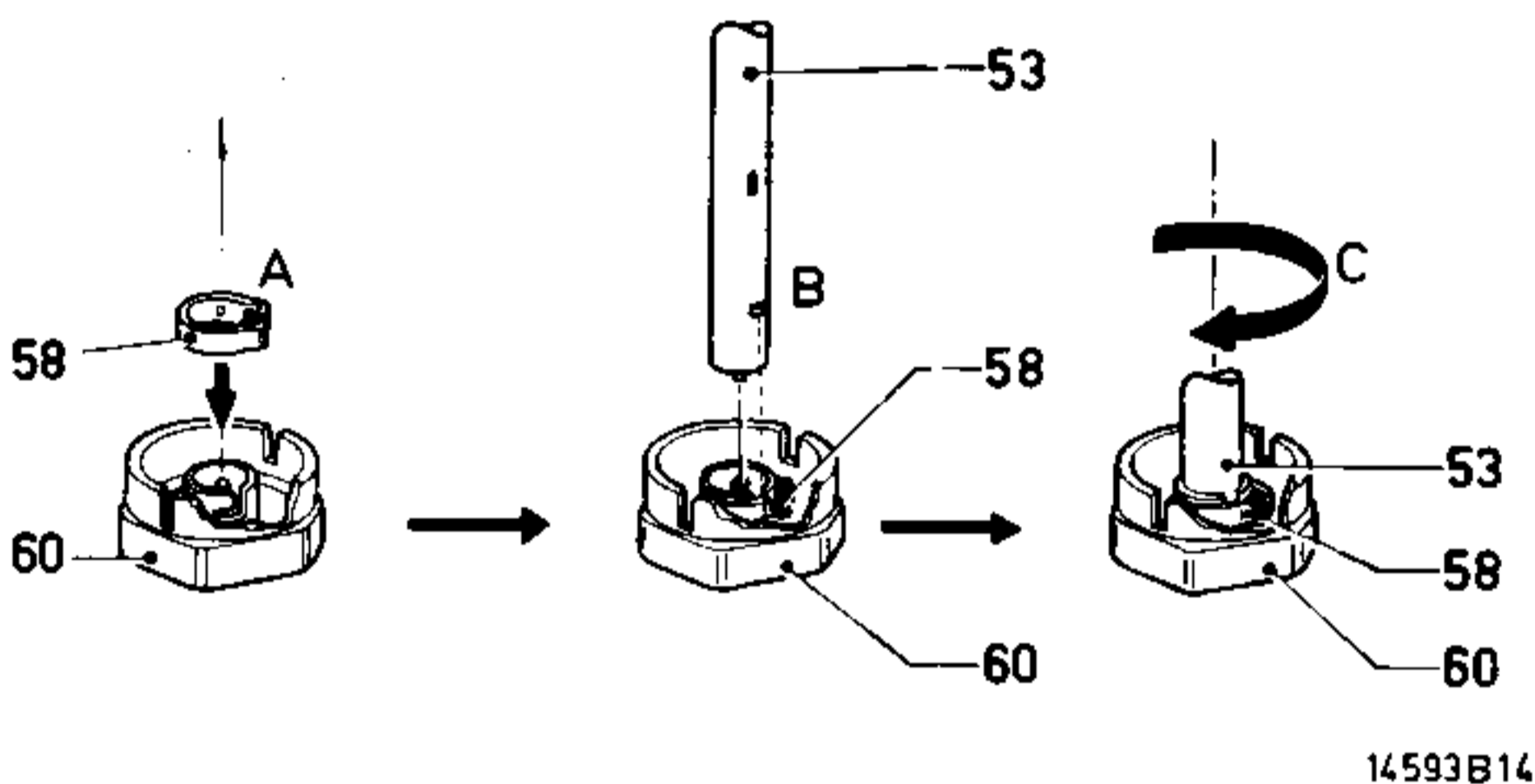


Fig. 7

**DEMOUNTING PIN 133**  
**BROCHE DE DEMONTAGE 133**

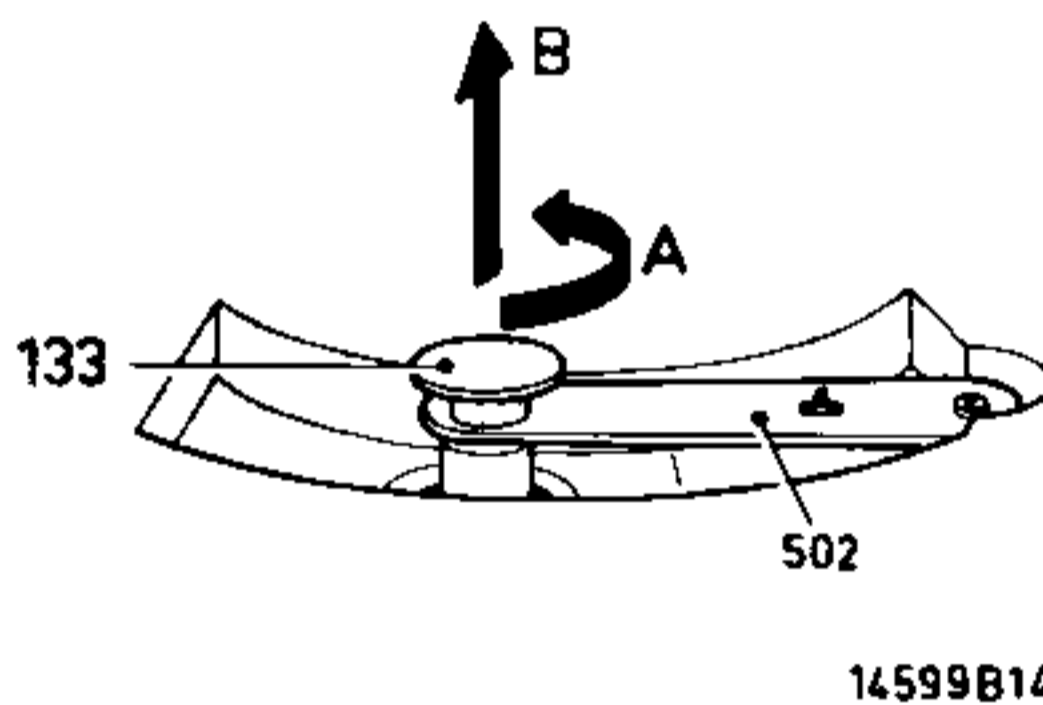
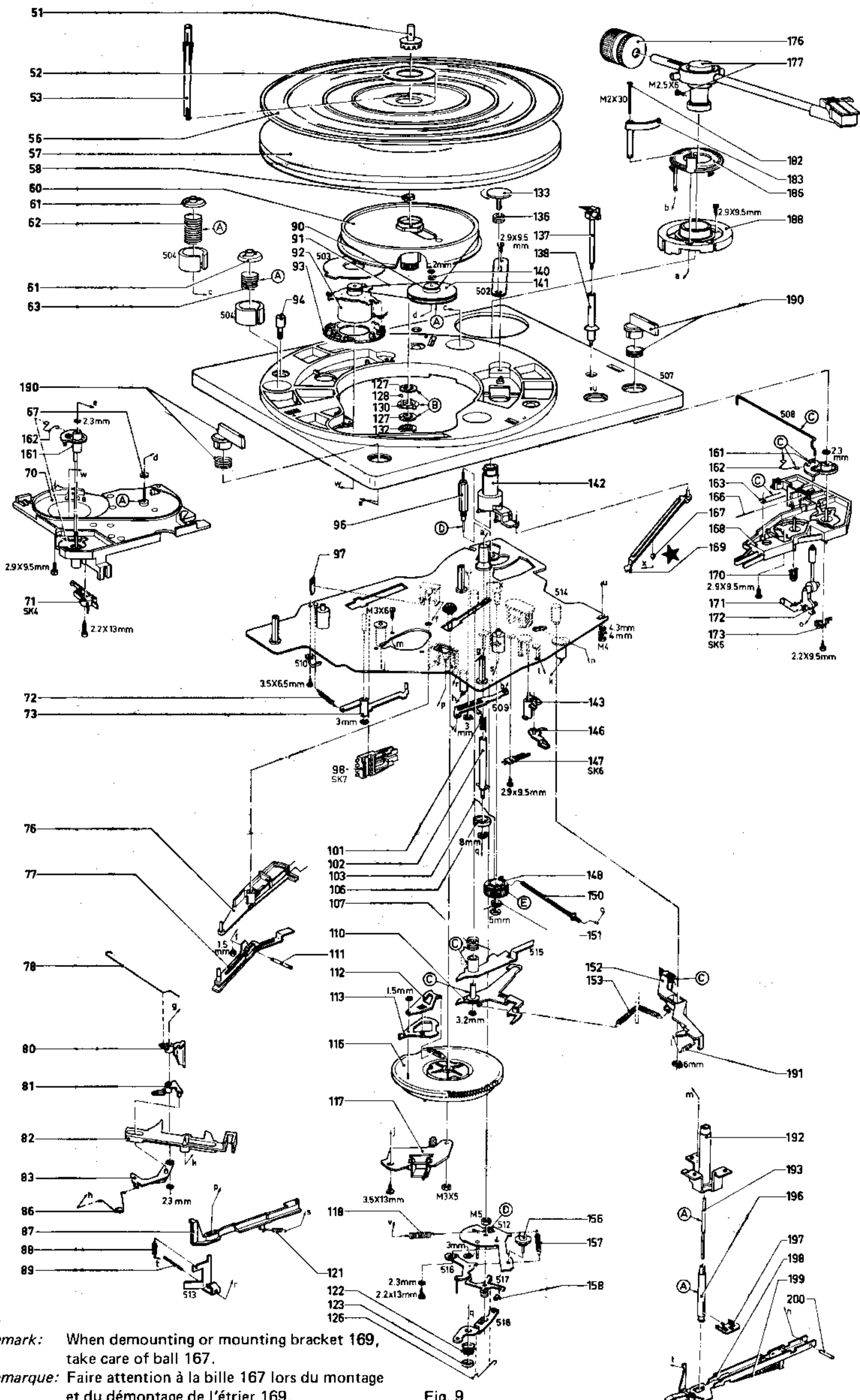


Fig. 8

**LIST OF MECHANICAL PARTS (Fig. 9)**  
**NOMENCLATURE DES PIECES MECANIKUES (Fig. 9)**

51	4822 535 60043	89	4822 535 60039	127	4822 532 20673	166	4822 529 50096
52	4822 532 70154	90	4822 358 30217	128	4822 520 40011	167	4822 520 40011
53	4822 535 60044	91	4822 358 30216	130	4822 520 40124	168+166+172	4822 402 50148
56	4822 466 50123	92	4822 361 20149	132	4822 532 60638	169	4822 402 60639
57	4822 528 10338	93	4822 462 40361	133	4822 535 70523	170	4822 520 70237
58	4822 530 80194	94	4822 502 11396	136	4822 325 80066	171	4822 492 40766
60	4822 528 60112	96	4822 535 91101	137	4822 402 60638	172	4822 402 60641
61	4822 505 10579	97	4822 492 62127	138	4822 535 70526	173 (SK5)	4822 277 10398
62	4822 492 51221	98 (SK7)	4822 278 90334	140	4822 532 60673	176	4822 691 30075
63	4822 492 51219	101	4822 492 51218	141	4822 528 80704	177	4822 251 70167
67	4822 532 60673	102	4822 535 70524	142	4822 520 10393	182	4822 502 11377
70	4822 528 60118	103	4822 402 60654	143	4822 402 50152	183	4822 402 60652
71 (SK4)	4822 271 30195	106	4822 402 60653	146	4822 402 30103	186	4822 466 50126
72	4822 492 31446	107	4822 492 40763	147 (SK6)	4822 278 90007	188	4822 528 60117
73	4822 402 50153	110	4822 402 60651	148	4822 691 30073	190	4822 411 50467
76	4822 402 60642	111	4822 535 60042	150	4822 535 70525	191	4822 492 31445
77	4822 402 60643	112	4822 402 60644	151	4822 492 40764	192	4822 535 91095
78	4822 492 40759	113	4822 402 60645	152	4822 402 50149	193	4822 535 91096
80	4822 402 60647	116	4822 528 60111	153	4822 492 31441	196	4822 535 91097
81	4822 402 60648	117	4822 402 60637	156	4822 528 30174	197	4822 530 80193
82	4822 402 30102	118	4822 492 31443	157	4822 492 31444	198+199	4822 402 50147
83	4822 402 60649	121	4822 492 31439	158	4822 462 40355	199	4822 492 31442
86	4822 492 40758	122	4822 492 62125	161	4822 402 50151	200	4822 535 60041
87	4822 402 60646	123	4822 532 20674	162	4822 492 40761		
88	4822 492 31438	126	4822 492 40765	163	4822 492 40762		



★ **Remark:** When demounting or mounting bracket 169, take care of ball 167.  
**Remarque:** Faire attention à la bille 167 lors du montage et du démontage de l'étrier 169.

Fig. 9



MISC.	C	R
BU1 BU3 BU5		
7004 7003	2030 2033 2034 2021 2023 2024 2026 2027 2029	3001 3004 3029 3032
	2020 2019 2040	3005 3008
F3		
		3019 3015
7002 7001	2035 2001 2004	
		3036 3037 3035 3009
	2042 2005	3014
	2007 2009 2011 2036	3018 3021
7009	2041 2013 2038 2012 2008	3016 3033 3017
F2	2039 2010 2014	3020 3022
SK8 7005 7008 BU4		3045
	2037	3023 3028 3034
7012	2043 2017 2015	
		3046
		3040 3044
		3025 3024
	2018 2016	3041 3038 3026 3039 3027
7011 7013		3043 3042
7010		
MISC.	C	R

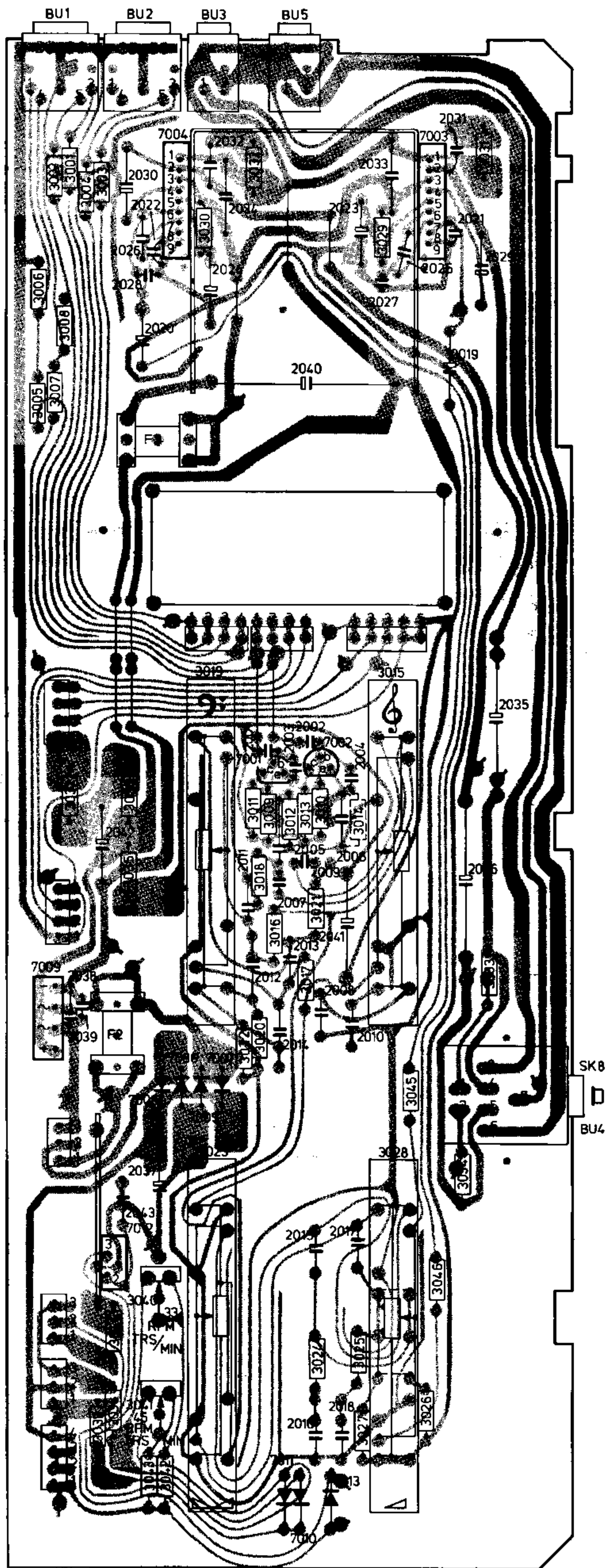
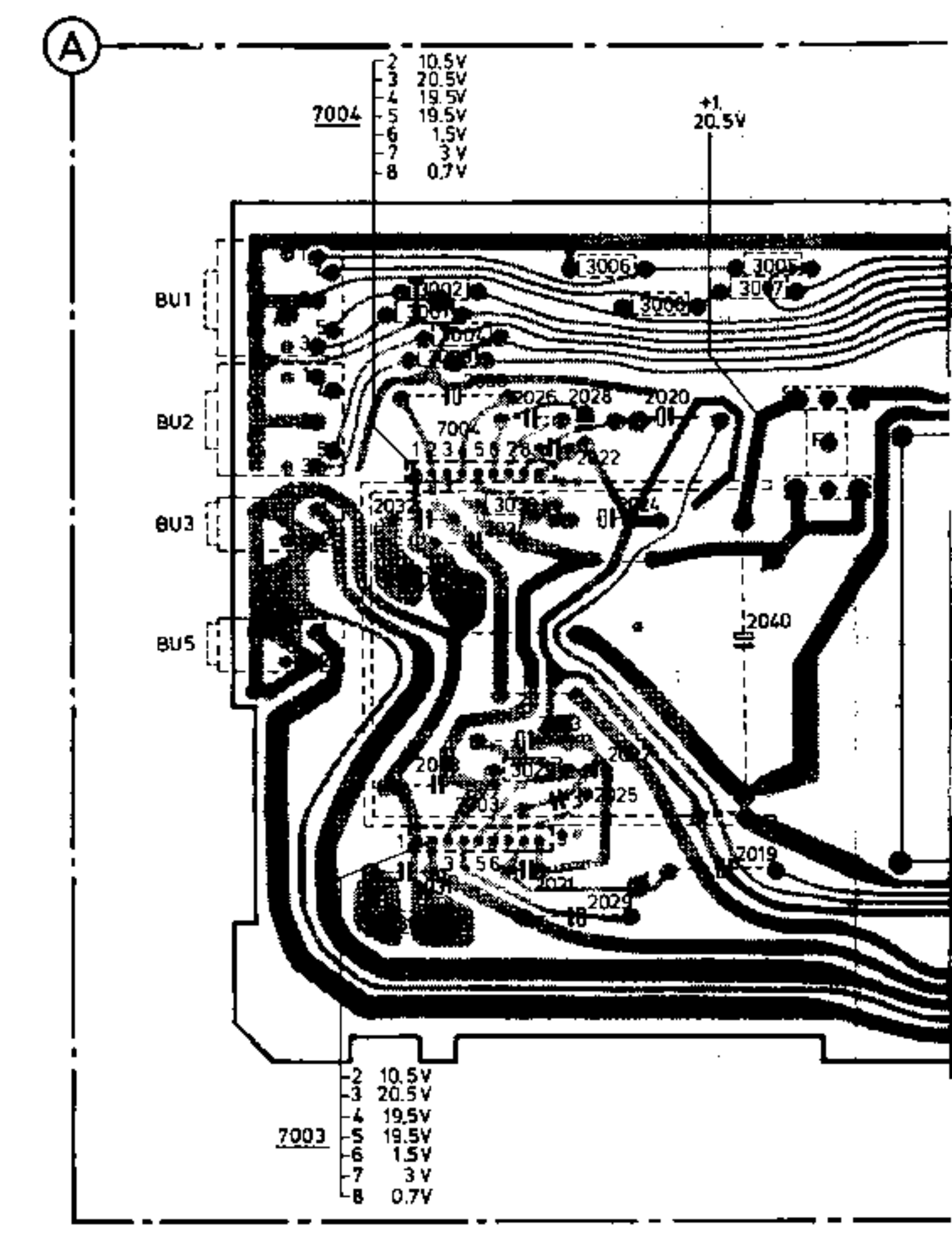
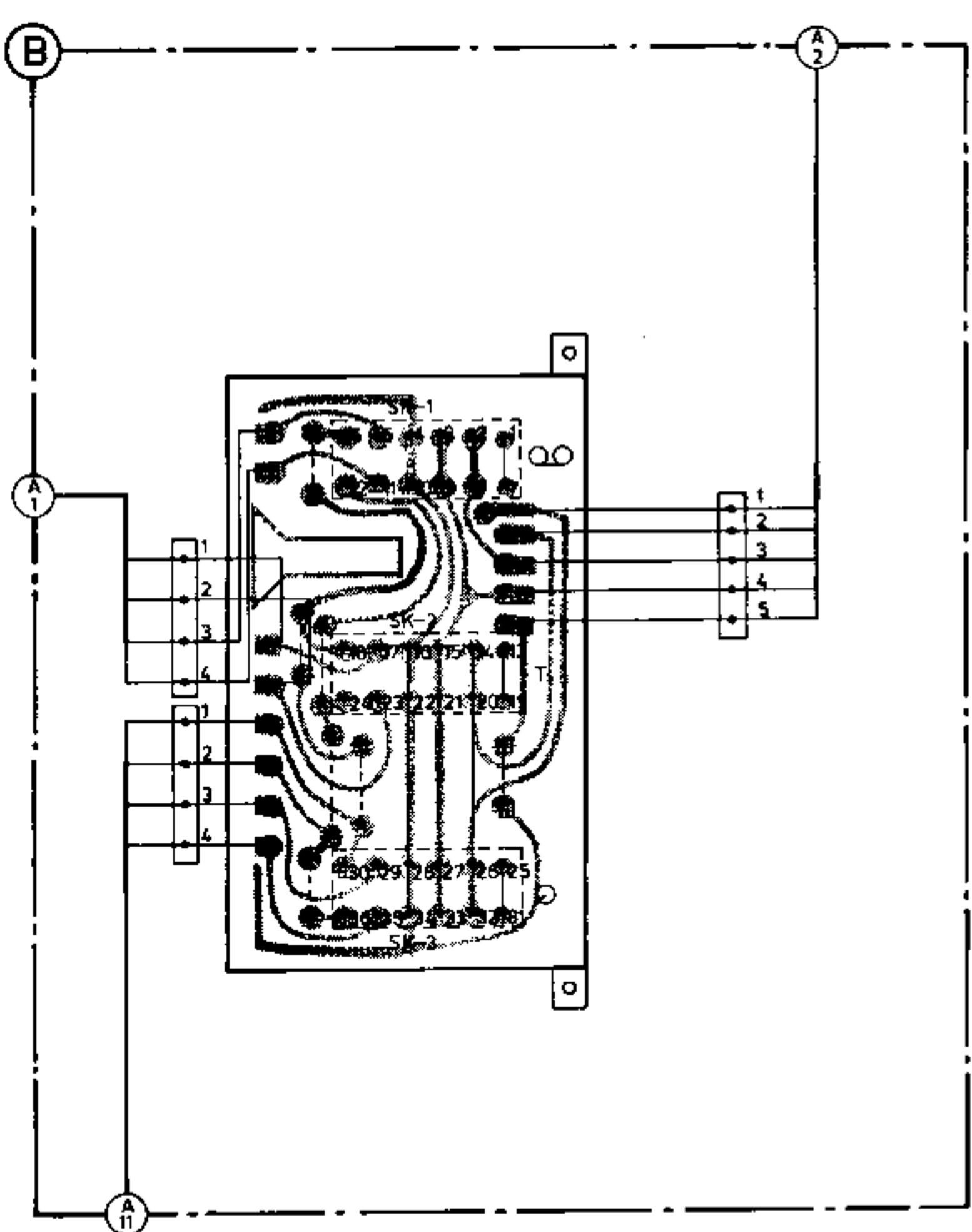
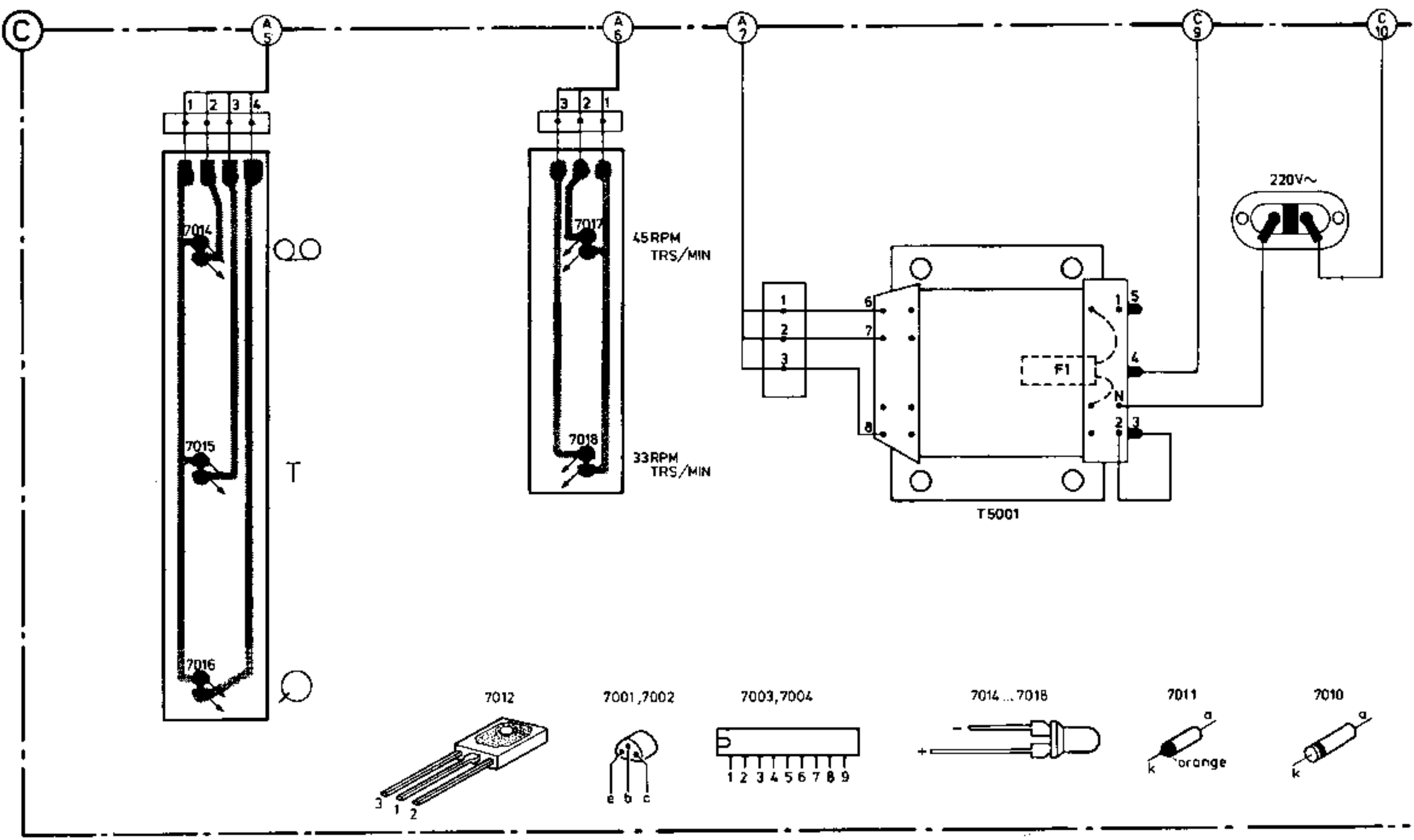


Fig. 10

MISC	7014-7016 SK-1-3	7017,7018	BU1-BU3,BU5	T5001,F1,7004,7003	F3
C				2030-2034	2019-2029
R				3001-3004	3029-3032
					2040
					3005-3008



Fig

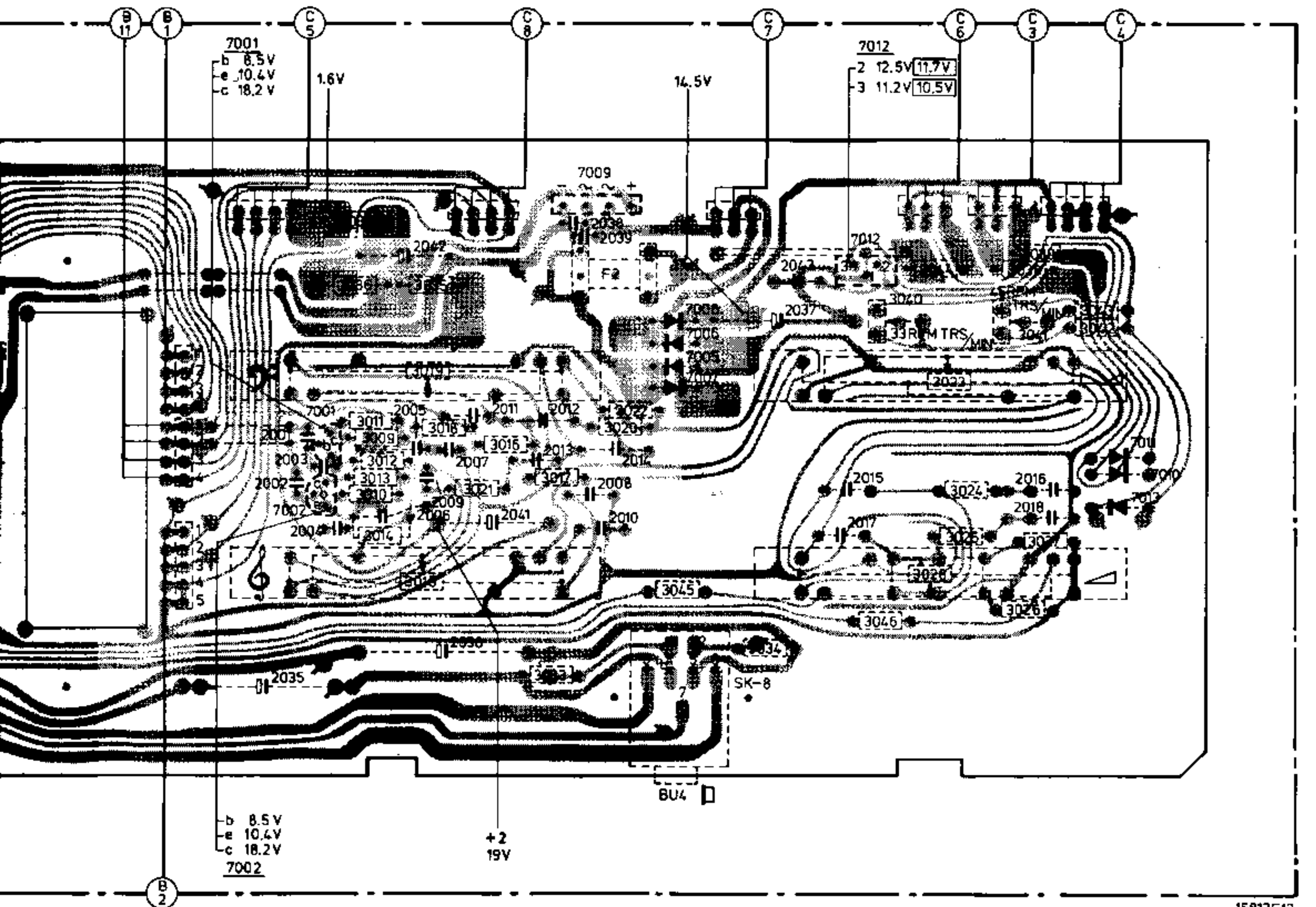
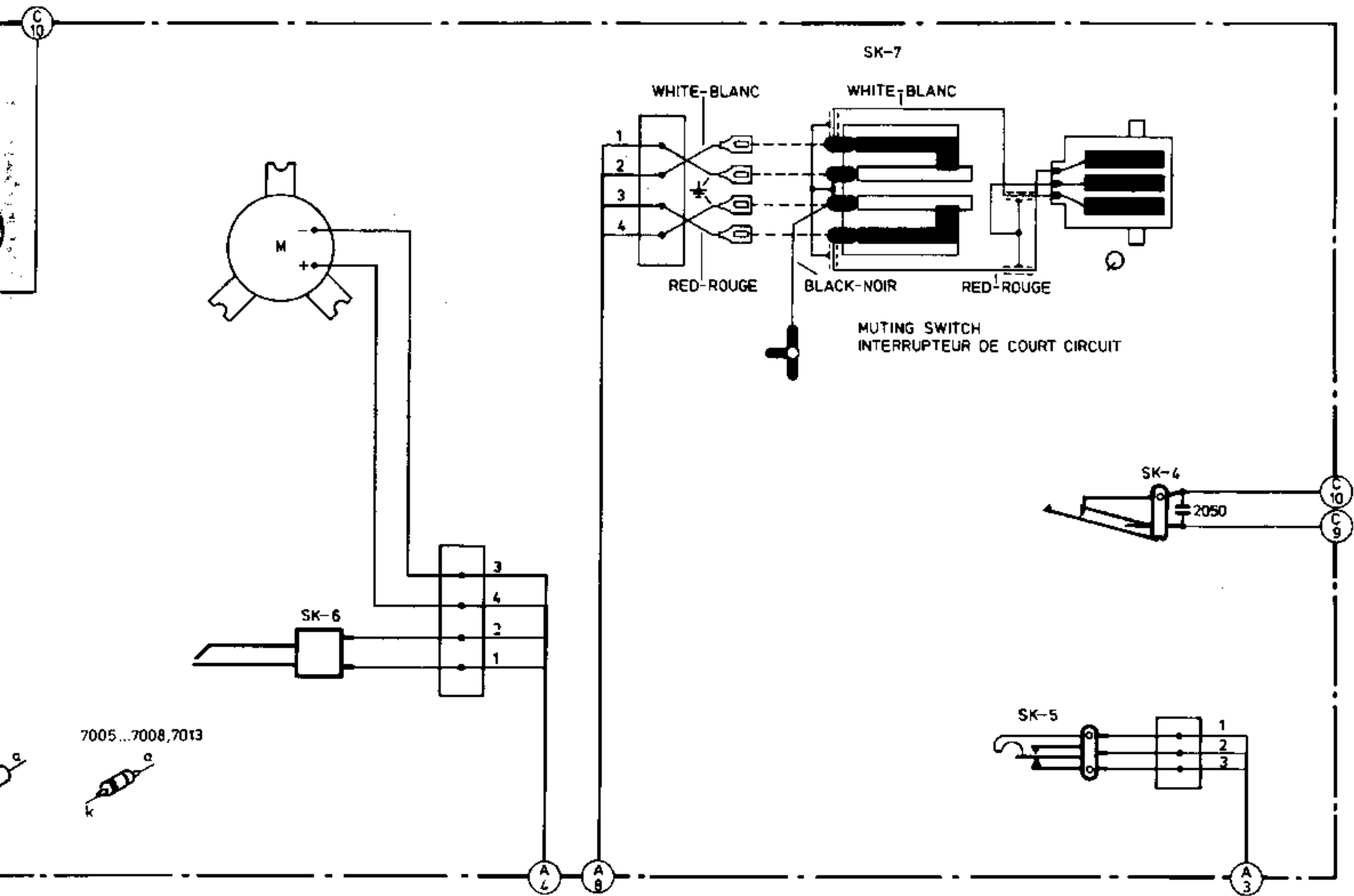
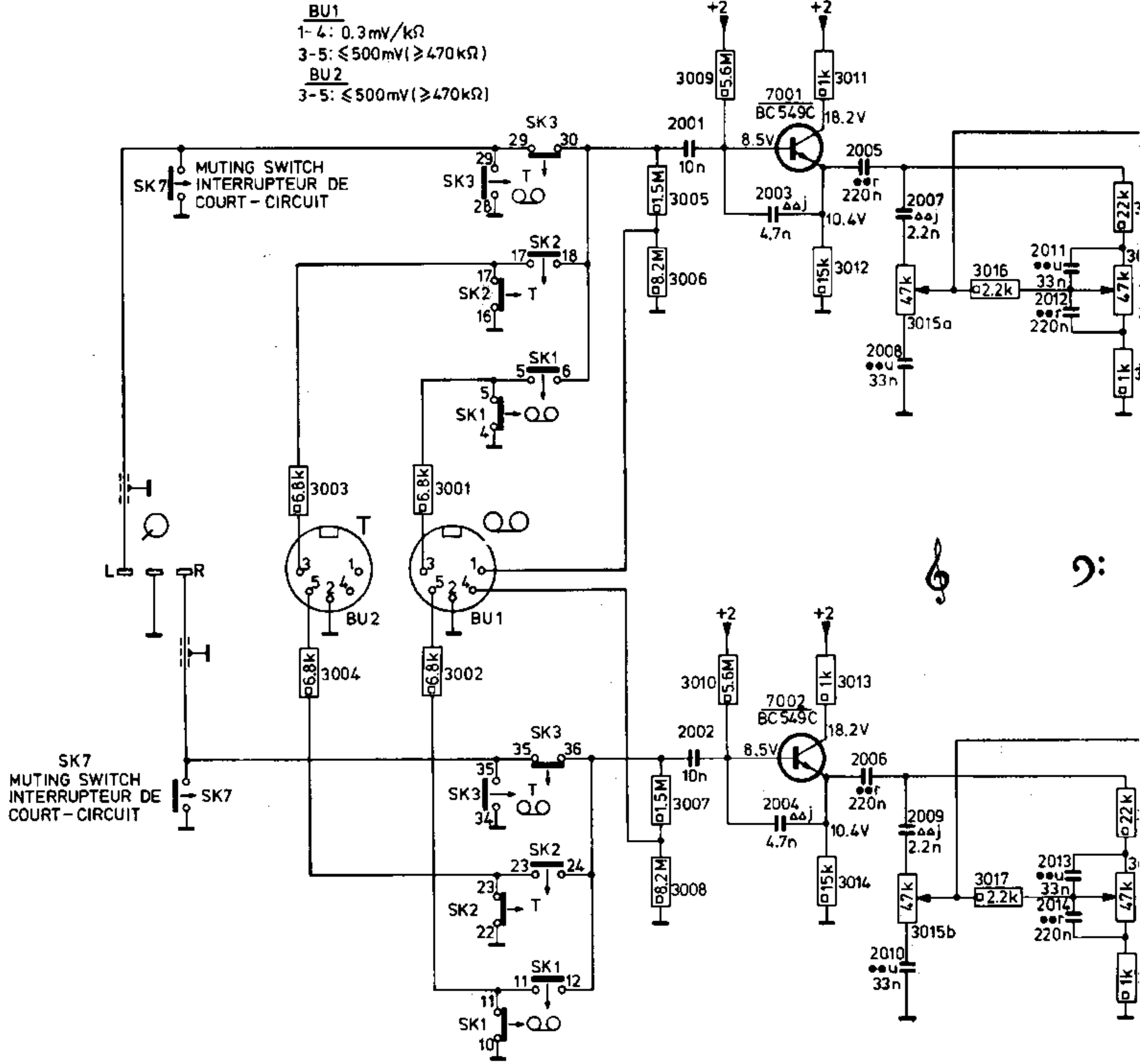


Fig. 11

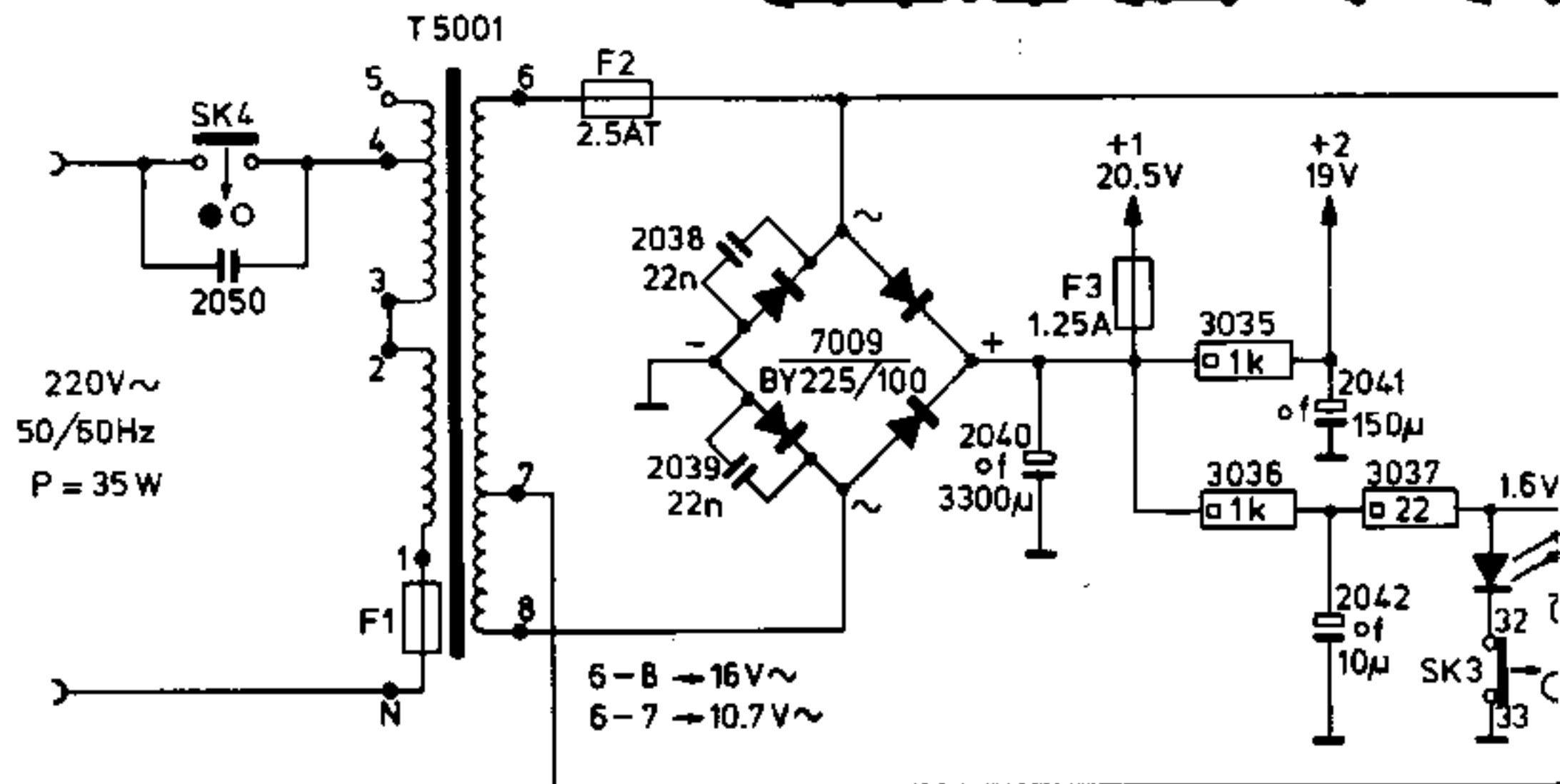
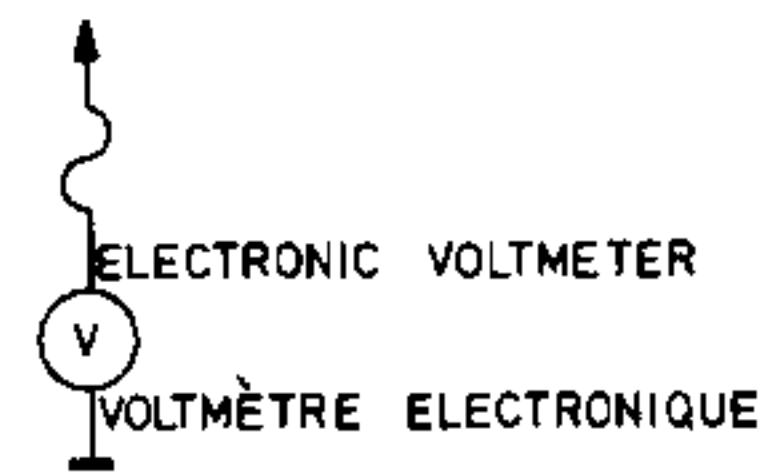
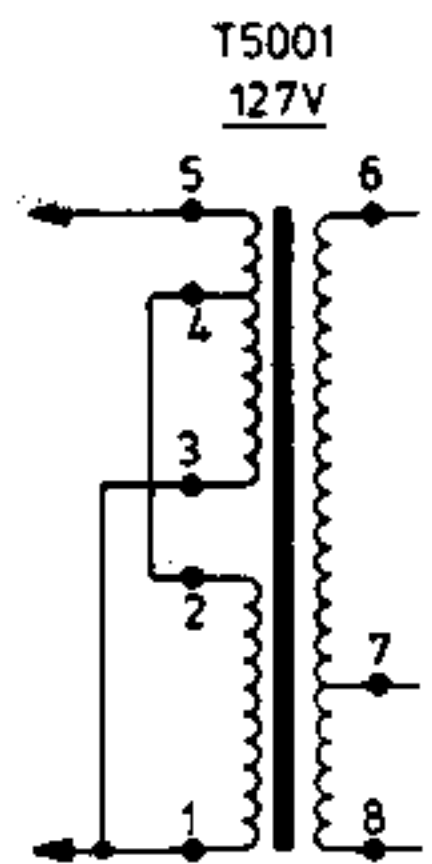
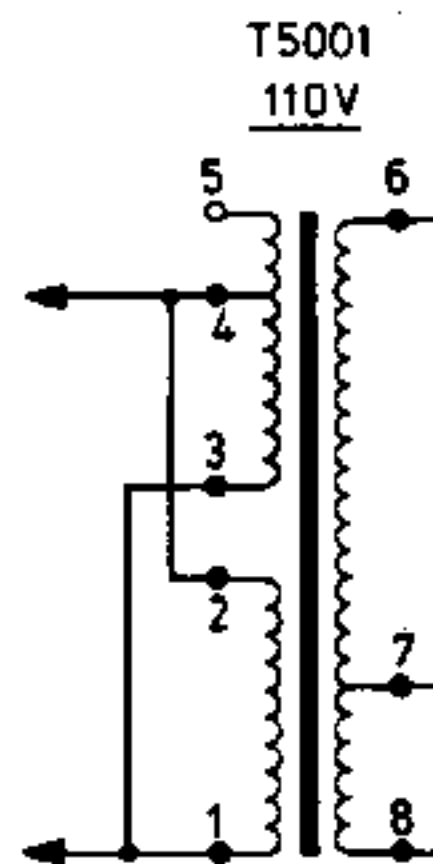
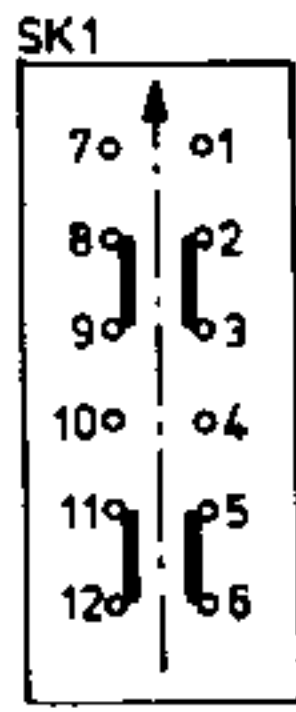
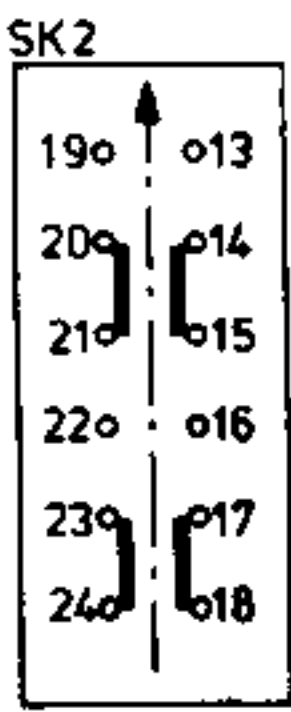
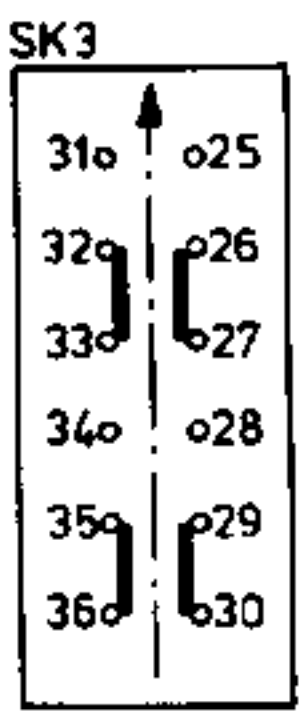


MISC.	SK7	BU2	SK4.BU1.SK1.2.3.F1.T5001	F2	D7009. TS7001,7002	F3	
C		2050		2001	2003	2005. 2008. 2007	2011. 2012
C				2038.2039.2002	2004	2006.2010. 2009. 2040	2013.2014.2041.
R		3003	3001	3005.3006.3009	3011.3013.3015a	3016	3018.30
R		3004	3002	3007.3008.3010	3012.3014.3015b.3035.3036.3017.	3037.3021.30	

**BU1**  
 1-4: 0.3mV/kΩ  
 3-5: ≤500mV(≥470kΩ)  
**BU2**  
 3-5: ≤500mV(≥470kΩ)



SK7  
 MUTING SWITCH  
 INTERRUPTEUR DE  
 COURT-CIRCUIT



D7016	D7015	D7014, D7005 + 7008	IC 7003, 7004	IC 7012	D7010, 7011, 7013	D7018	D7017, BU4, SK5, 8, BU3, 4, M, SK6
12	2015, 2016	2019, 2021	2023, 2025, 2027	2033	2029, 2035, 2031		
14, 2041, 2042	2017, 2018	2021, 2022	2037	2024, 2026, 2028	2034	2043	2030, 2026, 2032
3018, 3019a, 3020, 3023a, 3024, 3026, 3028a, 3045			3029		3031, 3033		
3021, 3019b, 3022, 3023b, 3025, 3027, 3028b, 3046			3030		3032, 3034, 3038 - 3044		

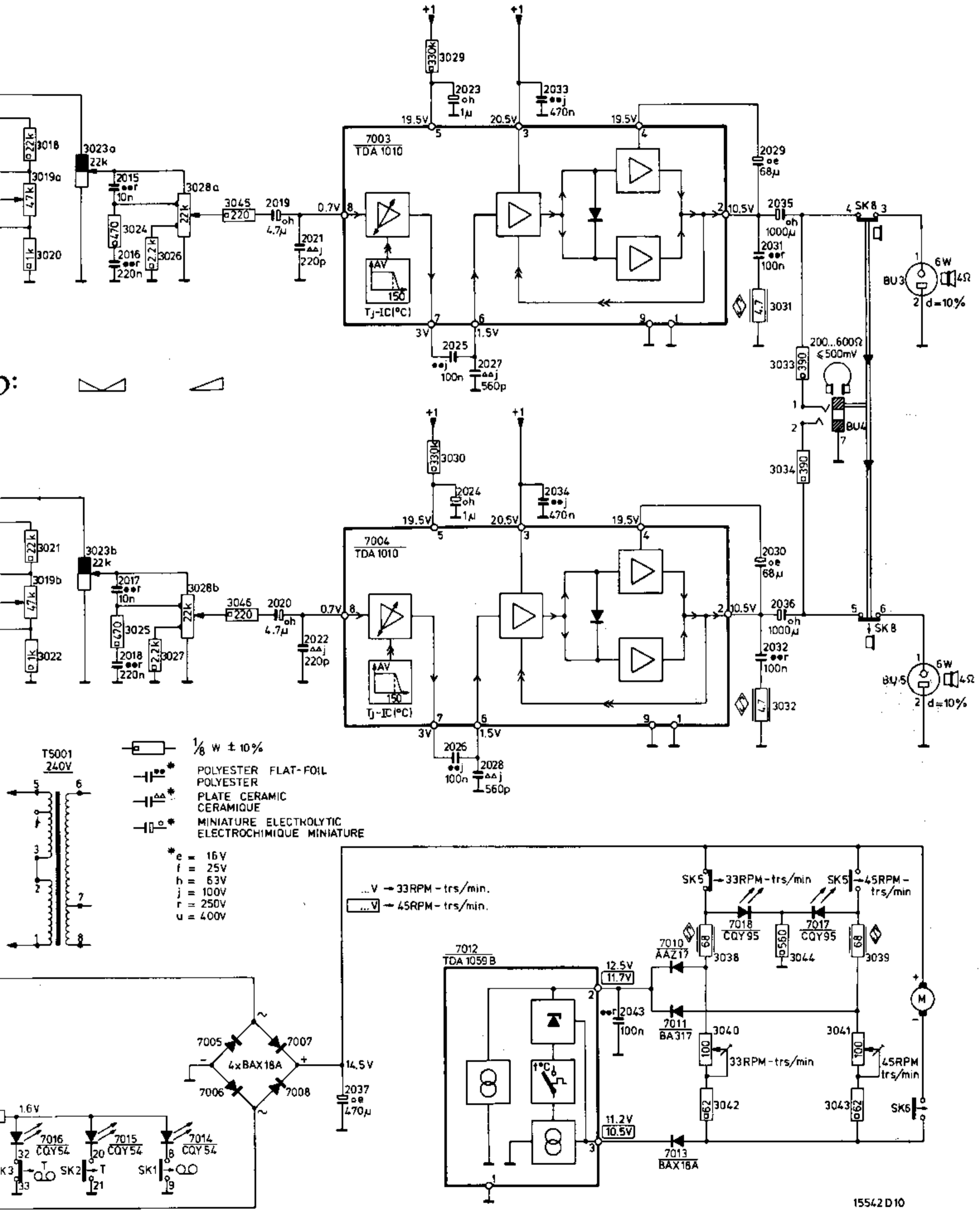


Fig. 12

15542 D 10

51

M4x16

M4x8

506

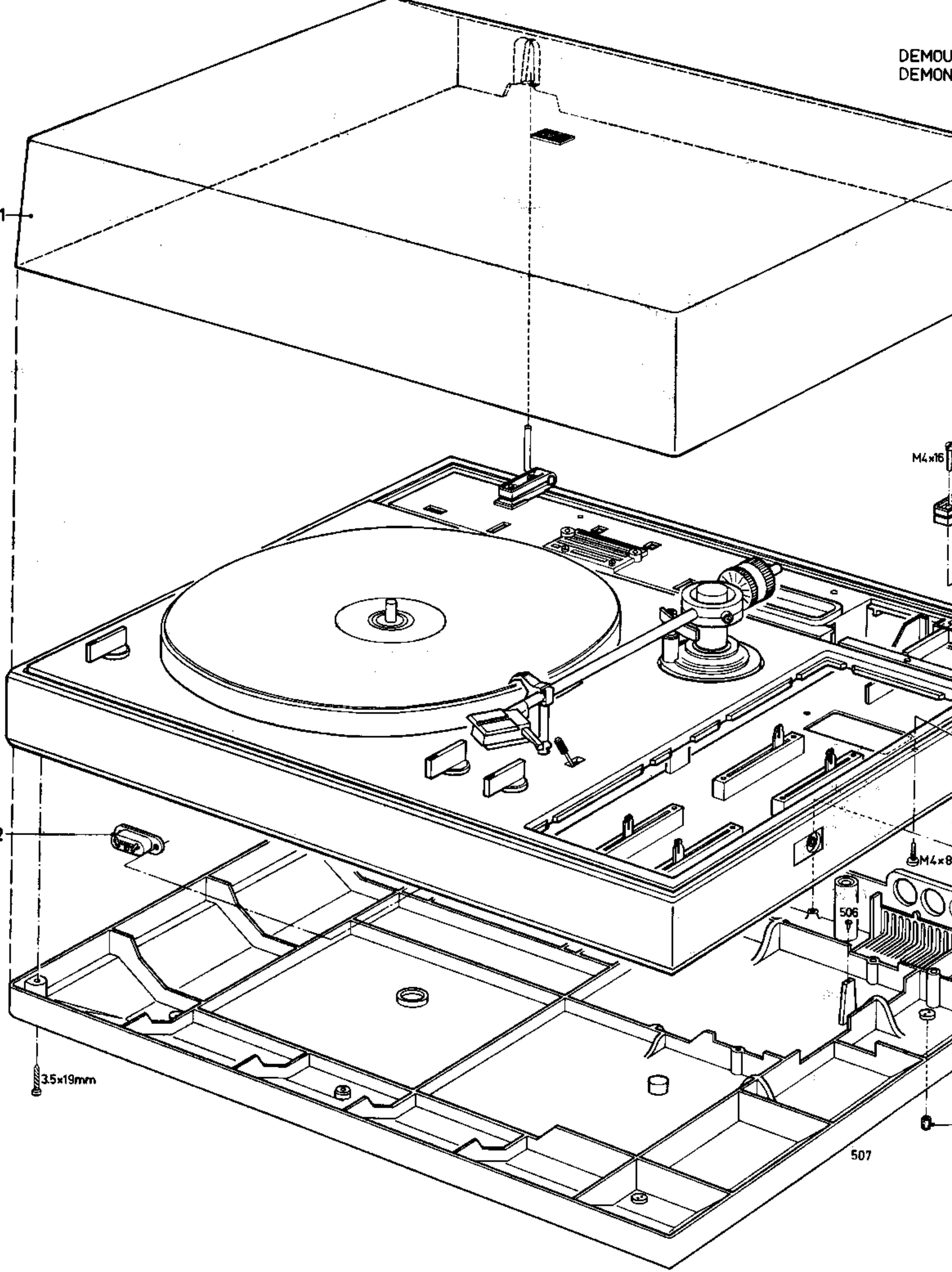
507

35x19mm

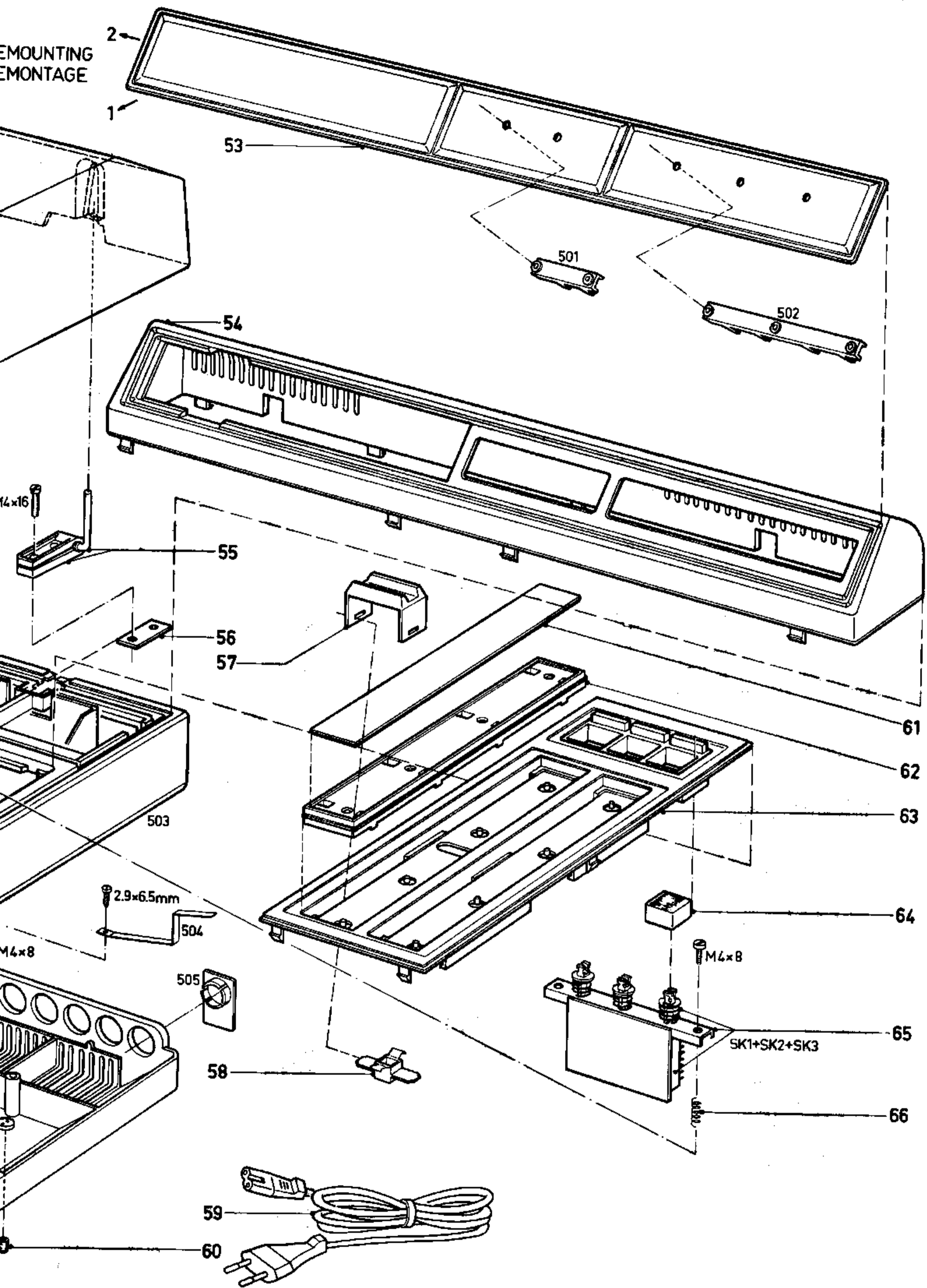
52

CS 63 311

Fig. 13



EMOUNTING  
EMONTAGE



# Service mededeling

PHILIPS NEDERLAND B.V. - EINDHOVEN  
TECHNISCHE SERVICE

Ref. 128 PH

Type 22 AF 563

Datum mei 1979

## GRAMMOFOON

Het losse netsnoer pos. 59 is vervangen door een vast, gemonteerd netsnoer.  
De snoer-trekcontlasting geschiedt nu met een tule, bestelnummer 4822 397 60048.

A 79-422



# PHILIPS

# Service mededeling

PHILIPS NEDERLAND B.V. - EINDHOVEN  
TECHNISCHE SERVICE

Ref. 291 PH

Type 22 AF 563

Datum april 1980

## GRAMMOFOON

Vanaf stempeling PW 00 942 en hoger is de liftconstructie gewijzigd (zie fig. 1).

- |                      |                          |
|----------------------|--------------------------|
| a. Nieuwe liftas     | pos. 102, 4822 535 70587 |
| b. Nieuwe nokschijf  | pos. 106, 4822 402 60702 |
| c. Nieuwe liftbeugel | pos. 77 , 4822 402 60703 |

### Opmerking:

De oude en nieuwe onderdelen, genoemd bij a, b en c, kunnen onderling niet worden uitgewisseld.

De oude onderdelen blijven normaal leverbaar.

d. plaat 521 met schroef 2,2 x 5,5 mm is toegevoegd.

e. met het oog op bovengenoemde wijzigingen, zijn het sub-chassis 514 en de beugels 509 en 518 aangepast.

A80-407



# PHILIPS



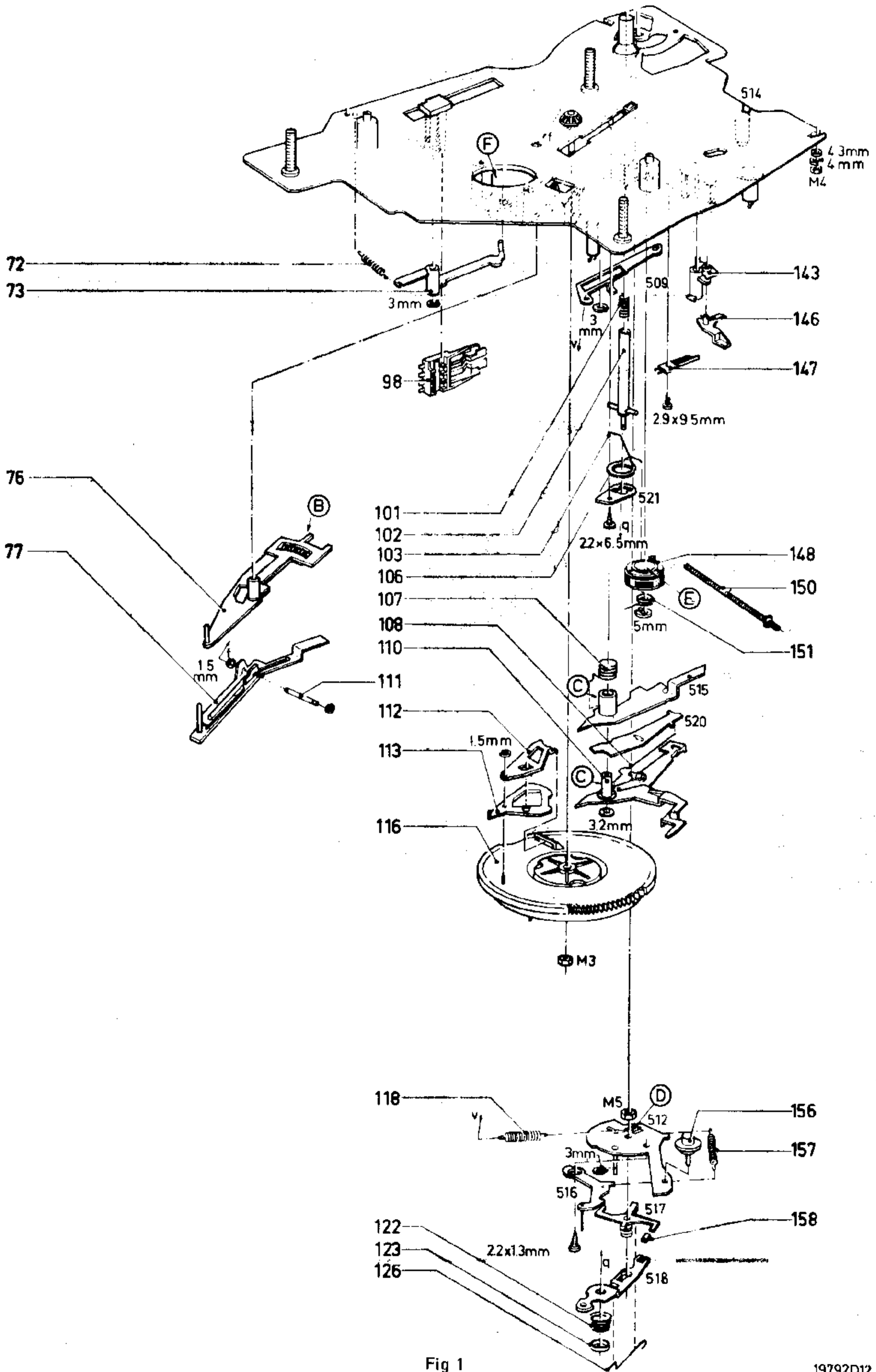


Fig 1