

11-19. FF & REW Torque Adjustments
— in FF & REW modes —

Adjust the position of the leaf spring to obtain the specified values of the torque meter. (The torque meter starts when the driving idler is forced to stop the motion.)

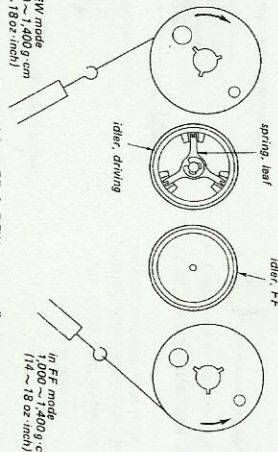
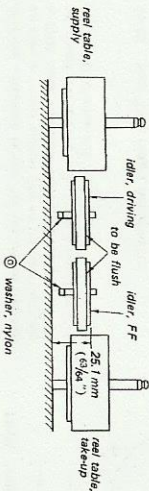


Fig. 11-25 FF & REW torque adjustments

11-20. FF & Driving Idler Height Adjustments
— in STOP mode —



Adjust the height of the idler by adding or removing the nylon washer.

Fig. 11-26 FF & driving idler height adjustments

nylon washer	
Part No.	thickness
3-425-197-01	0.13 mm
3-425-197-11	0.25 mm
3-425-197-21	0.50 mm

11-21. Record Releasing Rod Adjustment
— in STOP mode —

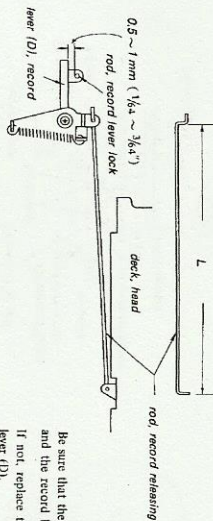


Fig. 11-27 Record releasing rod adjustment

rod, record releasing	
Part No.	L (length)
3-472-240-02	150 mm
3-472-240-11	150.5 mm
3-472-240-21	151 mm

Be sure that the clearance between the record lever lock rod and the record lever (D) is 0.5 ~ 1 mm (1/64 ~ 1/32 inch). If not, replace the record releasing rod or bend the record lever (D).

11-22. Flywheel Brake Check
— in REW mode —

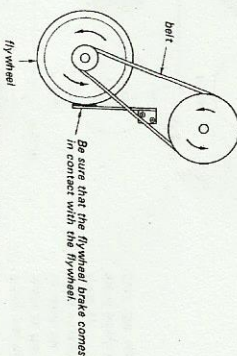


Fig. 11-28 Flywheel brake check

11-23. Tape Speed Adjustment

- (1) Playback the SONY speed check tape (SPC-47) at 19 cm/s (7 1/2 ips) in horizontal position.
- (2) If the counter reading is out of 3,960 ~ 4,040 Hz, replace with the motor pulley with identifying mark shown below. (As for Part No. of the motor pulley, refer to page 40.)

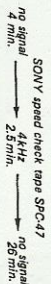
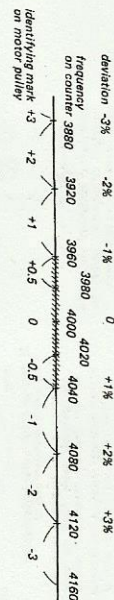


Fig. 11-29 Tape speed adjustment

Deviation (%)	Standard		
	19 cm/s (7 1/2 ips)	9.5 cm/s (3 3/4 ips)	4.8 cm/s (1 7/8 ips)
±1.5	1	1	1
Variation Limit (%)	1	1	1