

## Zenith Radio Corp.

**Model:** 6G601D

**Chassis:**

**Year:** Pre March 1942

**Power:**

**Circuit:**

**IF:**

**Tubes:**

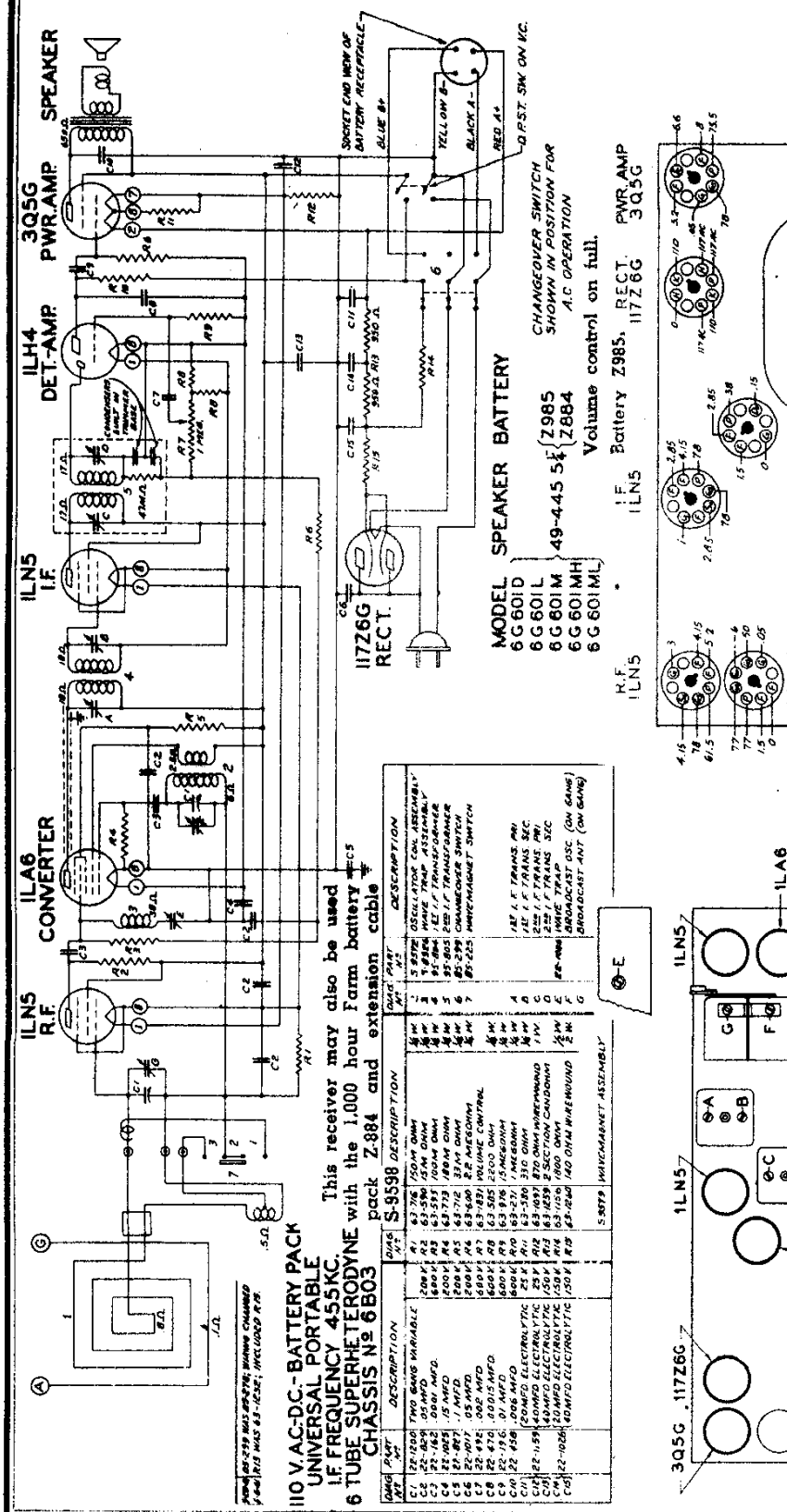
**Bands:**

Resources

**Riders Volume 13 - ZENITH 13-17**

ZENITH RADIO CORP.

MODELS 6G601D, 6G601L, 6G601M, 6G601ME, 6G601ML, Ch. 6B03



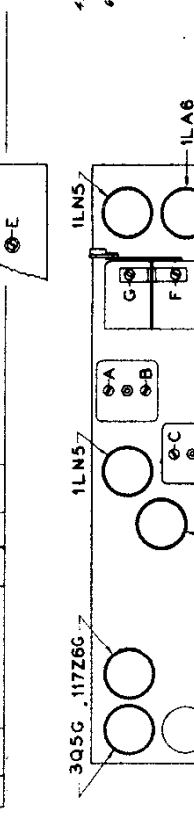
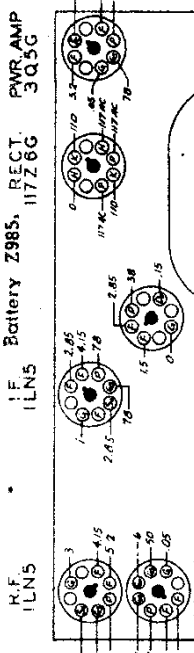
110 V. A.C.-D.C. BATTERY PACK  
UNIVERSAL PORTABLE  
I.F. FREQUENCY 455 KC.  
6 TUBE SUPERHETERODYNE  
CHASSIS No. 6B03

This receiver may also be used  
with the 1,000 hour Farm battery  
pack Z-884 and extension cable  
S-9598

COMP. PART NO.	DESCRIPTION	QTY.	DESCRIPTION
C1	500K OHM 500V	1	500K OHM 500V
C2	100K OHM 500V	1	100K OHM 500V
C3	100K OHM 500V	1	100K OHM 500V
C4	100K OHM 500V	1	100K OHM 500V
C5	100K OHM 500V	1	100K OHM 500V
C6	100K OHM 500V	1	100K OHM 500V
C7	100K OHM 500V	1	100K OHM 500V
C8	100K OHM 500V	1	100K OHM 500V
C9	100K OHM 500V	1	100K OHM 500V
C10	100K OHM 500V	1	100K OHM 500V
R1	100K OHM	1	100K OHM
R2	100K OHM	1	100K OHM
R3	100K OHM	1	100K OHM
R4	100K OHM	1	100K OHM
R5	100K OHM	1	100K OHM
R6	100K OHM	1	100K OHM
R7	100K OHM	1	100K OHM
R8	100K OHM	1	100K OHM
R9	100K OHM	1	100K OHM
R10	100K OHM	1	100K OHM
L1	100K OHM	1	100K OHM
L2	100K OHM	1	100K OHM
L3	100K OHM	1	100K OHM
L4	100K OHM	1	100K OHM

**MODEL SPEAKER BATTERY**  
6G601D  
6G601L  
6G601M  
6G601ML

49-445 5¢ (Z884)  
Volume control on full.



Line voltage 117 v. A.C. or D.C.  
Power consumption—117 v.—20 watts.

Power output—360 milliwatts.

Stage Gains:

- Ant. to R.F. grid—5 × at 1000 Kc.
- R.F. grid to conv. grid—6.5 × at 1000 Kc.
- Conv. grid to I.F. grid—49.1 × at 455 Kc.
- Overall audio—322 × at .05 watt.
- 400 cycles.
- Tuning Range—540 Kc. to 1620 Kc.

Operation	Connect Test Oscillator to	Dummy Antenna	Set Test Oscillator to	Band	Set Dial At	Adjust Transmitters	Purpose
1	Converter Grid	.5 mmfd.	455	—	600	A B C D	I. F. Alignment
2	Converter Grid	.5 mmfd.	455	—	600	E	Adi. Trap Minimum
3	Single Turn Loop to Coupled Loosely to Wave Magnet	—	1400	—	1400	F	Set Osc. to Scale
4	—	—	1400	—	1400	G	Alignment of Antenna

\*Grid of test osc. connected to No. 9 pin of ILA6 socket