

# NOTES

## SW Tuning Table

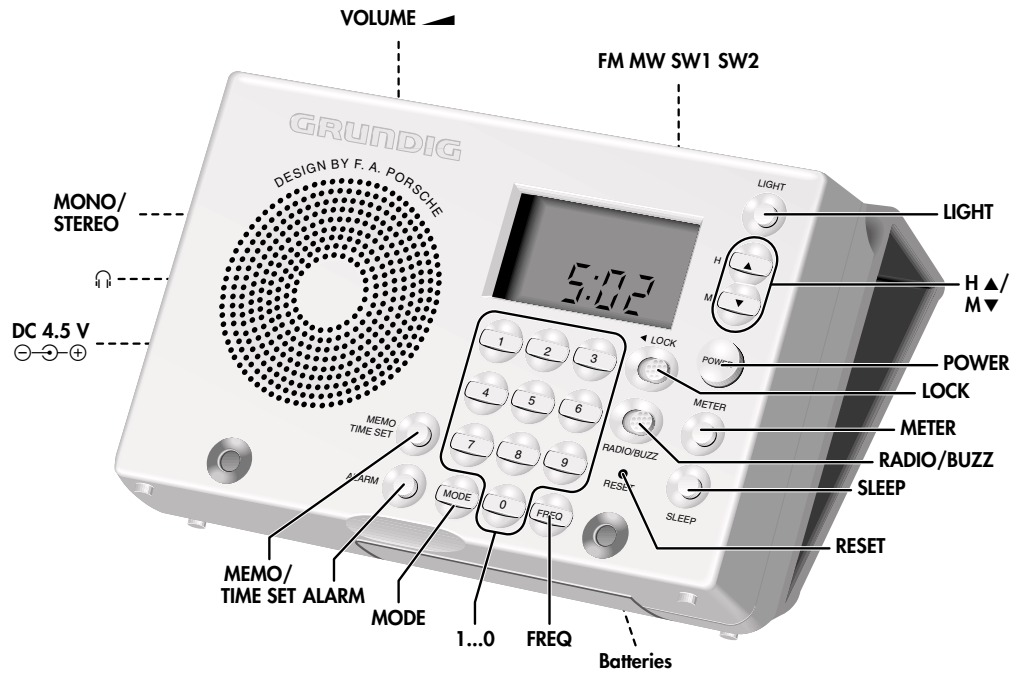
SW1 (MHz)	2.30 - 7.40	SW2	9.40 - 26.10
SW M-Band (MHz)	2.30 - 2.55 (120m)		9.40 - 10.05 (31 m)
	3.15 - 3.45 (90m)		11.50 - 12.20 (25m)
	3.85 - 4.05 (75m)		13.50 - 13.90 (22m)
	4.70 - 5.15 (60m)		14.95 - 15.70 (19m)
	5.75 - 6.30 (49m)		17.40 - 18.00 (16m)
	7.05 - 7.40 (41 m)		21.30 - 21.95 (13 m)
			25.60 - 26.10 (11 m)

CE

## English

## Page

Controls .....	3-4
Display .....	5
Power Supply .....	6
General .....	7
Radio reception .....	8-9
Clock .....	10
Alarm .....	10
Sleep .....	11
Lock .....	11
General information .....	12
Troubleshooting .....	13

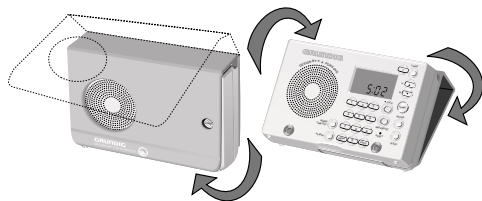


## CONTROLS

### Leather cover

Your YB-P 2000 comes with a leather cover which is used both to protect the set and to use the radio in an inclined position.

- Rotate the leather cover as shown in the illustration. You can now use the set in an inclined position.



### Notes

The unit meets the CEE regulations concerning interference radiation.

This product fulfills European directives 89/336/EEC, 73/23/EEC and 93/68/EEC.

This set complies with the safety regulations according to DIN EN 60065 (VDE 0860) and thus with the international safety regulations according to IEC 65000.

The model number is located on the back of the set.

### Controls (page 3)

- DC 4.5 V** – connection socket for a mains adapter
- socket for connecting stereo headphones
- MONO/STEREO** – for mono/stereo selection
- VOLUME** – for adjusting the volume
- FM MW SW1 SW2** – band selector switch
- LIGHT** – for illuminating the display
- H ▲ / M ▼** – for tuning to a radio station  
– for setting hours/minutes
- POWER** – for switching the radio on and off
- ◀ LOCK** – for blocking all button functions
- METER** – for selecting the short-wave band
- RADIO/BUZZ** – for setting the alarm to radio or buzzer
- SLEEP** – for switching on the sleep function
- BATTERIES** – inside the batteries compartment:  
**SW FREQ.** selector  
**AM STEP** selector (see pages 19/20).
- RESET** – for erasing the memory
- FREQ** – for entering frequencies
- 1...0** – for direct numeric entries (1...0)  
– for selecting and storing preset stations (1...5)
- MODE** – to change the display mode
- ALARM** – for switching the alarm on and off
- MEMO/**  
**TIME SET** – for programming stations into the memory  
– for setting the time (HOME/DUAL/ALARM)

## DISPLAY

### Display

The display provides information about the functioning of your world receiver:



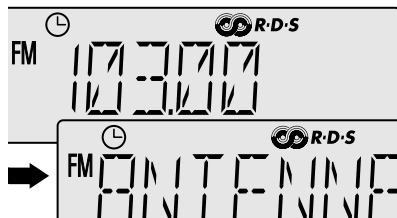
- While the radio is switched off, the current time will be indicated. The first time it is used, or if the memory is erased, '0:00' will appear on the display.
- When the radio is switched on, the frequency in **kHz** or **MHz** and the wave band **FM**, **MW**, **SW1** or **SW2** will be indicated.
- When the alarm is switched on, the alarm mode (**ALARM** and radio or buzzer) will be indicated.
- this indicator lights up when a certain station is correctly tuned to.
- indicates stereo reception for FM.
- **SLEEP** indicates that the sleep time function is active.
- **LOCK** indicates that all buttons are locked.
- indicates that batteries should be replaced
- **MEMO** lights up when you are storing stations.

### Switching the display mode

You can change the information that appears on the display of the YBP 2000, with the **MODE** button.

When the radio is off:

- The display shows the current time mode (HOME or DUAL).
- If you wish to check the other settings, press **MODE** briefly.
- The display changes each time you press the button.
- The display will return to the current time automatically after five seconds (or press **MODE** briefly).



When the radio is on:

- The display shows the frequency.
- If you wish to check the other settings, press **MODE** briefly.
- The display changes each time you press the button.
- The display will return to the frequency indication automatically after five seconds (or press **MODE** briefly).

## POWER SUPPLY

### Batteries

- Open the battery compartment and insert 3 alkaline batteries of the type R6, UM 3 or AA.



- Remove the batteries when they are exhausted or if they are not going to be used for a long period of time.

**Note:** If the **DC 4.5 V**  $\ominus\text{---}\ominus\oplus$  socket is in use, the battery supply will switch off automatically.




#### Note on Environmental Protection

Do not throw exhausted batteries in the household refuse.

Hand over the old batteries to your dealer or public collecting points when buying new ones.

#### Warning for weak batteries :

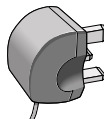
When the batteries run low, the sound volume declines gradually. The indication  appears on the display. Continued operation with low batteries causes the radio to turn off automatically, other malfunctioning and losing programmed time settings and preset radio stations. In this case, remove the batteries and press a paper clip through the **RESET** hole.

Readjust the time settings and the preset radio stations. To prevent that the radio is switched on accidentally, use the **LOCK**-switch when packing the radio or putting it away.

### AC Mains adapter (not included)

You can connect the set to the mains using a mains adapter.

Only use a mains adapter which supplies 4.5 V DC with the negative pole at the centre pin of the plug ( $\ominus\text{---}\ominus\oplus$ ).



#### Before connecting the mains adapter

- Check that the mains voltage indicated on the type plate of the adapter matches your local mains voltage.
- If the mains adapter is equipped with a voltage selector, set this to the local voltage.
- Connect the mains adapter to the **DC 4.5 V**  $\ominus\text{---}\ominus\oplus$  socket of the set and to the wall socket.

#### Power failure

- If the power supply is interrupted, the programmed time settings and preset radio stations will be kept in the memory for 10 min. or more.
- If the AC power is disconnected from the 4.5 DC socket, the batteries (if present) will take over the supply.

## GENERAL

### Time zones

The earth rotates around its axis in 24 hours and around the sun in one year.

These movements are responsible for the time differences and the seasons on earth. Due to the direction of rotation of the earth it is always earlier in the day to the west of where you are and later in the day to the east of where you are.

The earth is divided into 24 time zones with a difference of one hour between adjacent zones. The system is based on one standard time zone, namely **UTC** (Coordinated Universal Time), previously **GMT** (Greenwich Mean Time). Generally speaking, short-wave stations announce their broadcasts in **UTC**.

To check which time zone you are now at, use the world map on the back of the set.

### Short Wave (SW)

Your world receiver can receive a number of wavebands. Most of these are known and tuning to the required station will soon become a matter of routine, as the stations are always to be found at the same place on the dial and are thus tied to a fixed wavelength and frequency. With short wave this is unfortunately not always the case. Short wave transmitters have to change their wavelengths fairly often. In the short-wave range between 10 and 100-metre wavelength (frequencies of 30-3 MHz resp.) nine bands between 10 and 50 metres are allocated to short-wave broadcasting, with another four bands between 60 and 120 metres for broadcasting in the earth's tropical areas. The latter are roughly located between the latitudes of 30° north and 30° south, i.e. around the equator. Most short-wave broadcasting bands, indicated in the short-wave table, are allocated for the whole world and can be used for international broadcasting. They are so far the only wavelengths which allow direct radio reception over long distances. So in addition to the broadcasting services, there is a large number of other users of short wave, for example radio amateurs, shipping and aviation, radio navigation etc.

### SW Tuning mode (meterband/continuous)

Your Yachtboy P-2000 has a built-in SW frequency (**SW FREQ.**) tuning mode selection switch inside the battery compartment.

- Select **A**, if you only want to get reception for the stations with the frequency within the meter-bands.
- Select **B**, in case you wish to obtain the frequencies in between the gaps of the meterbands.

# RADIO RECEPTION

## AM STEP selector (MW)

The minimum 'frequency distance' (span division) between adjacent radio stations (measured in kHz) is standardized all over the world.

However, North and South America use another standard than the rest of the world.

This means that the radio should use a tuning step according to the standard concerned in order to obtain accurate radio tuning.

The **AM STEP** switch (in the battery compartment) allows accurate tuning for both standards.

### Position 10 kHz for the Americas

- MW tuning step 10 kHz;

### Position 9 kHz for the the rest of the world


- MW tuning step 9 kHz;



## Aerials

- For FM reception extend the telescopic aerial fully. To improve the reception you can incline and rotate the aerial. If the FM signal received is too strong (in the direct vicinity of the transmitter) you can retract the aerial.
- For the medium wave (MW), the set has a built-in aerial, so the telescopic aerial is not needed. You can direct the aerial by turning the set itself.
- For short wave reception (SW) extend the telescopic aerial and position it vertically.

## Radio reception

- Ensure that the **LOCK**-switch is off.
- Press **POWER** to switch the radio on.
  - The frequency and the wave band will appear on the display.
- Adjust the volume with the **VOLUME** control.
- You can connect headphones to the  socket .
  - The loudspeaker will then be switched off.
- Set the wave range with the **FM MW SW1 SW2** switch
- If you select **SW** with the **FM MW SW1 SW2** switch, press **METER** to select the required meter band of short wave (see the SWV Tuning Table on page 2).
  - The chosen short-wave band and the frequency will appear on the display.
- Tune to a radio station either manually, automatically, directly or with the **PRESET** buttons, see next page.



## FM MONO/STEREO

- When '∞' appears on the display, you are receiving an FM stereo transmitter. If you are listening with headphones, you will hear the FM station in stereo.
- A disturbing noise, due to a weak FM stereo signal, can be suppressed by setting **MONO/STEREO** to **MONO**.
  - The '∞' indication goes out and you will hear the FM station in mono.
- Press **POWER** once again to switch the radio off.
  - The display will now indicate the current time.

# RADIO RECEPTION

## Tuning to a station

There are three possibilities for tuning in to a station:

- **Automatically** - the stations are sought automatically.
- **Manually** - This is easy if the frequency of the station is already known (e.g. from your radio and television guide).
- **Directly** - The easiest way to obtain a station if its frequency is already known.

### Automatic tuning

- Keep **▲** or **▼** (TUNING UP or DOWN) pressed down until the frequency on the display changes continuously. Tuning will stop automatically as soon as a station is found.
- Repeat this until you have found the desired station.

### Manual tuning

- Keep **▲** or **▼** pressed down until you come close to the desired frequency.
- Then briefly press the other button (**▲/▼**); tuning will stop.
- Then press **▲** or **▼** repeatedly until you reach the desired frequency.

### Direct selection

- When **POWER** is switched ON, press **FREQ.**
  - The frequency disappears from the display.
- You can now enter the station's frequency with the **1...0** keys.
- Confirm the entry by pressing **FREQ.** once more.
  - If you insert an invalid frequency, the display shows 'Err'.
- Repeat the steps above, making sure the frequency is correct.

## Preset radio stations

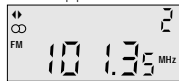
You can programme 20 stations into the memory, 5 on each waveband.

### Programming

- Press **POWER** button to switch on the radio.
- Tune to a radio station automatically, manually or directly.
- Press the **MEMO/TIME SET** button. The 'MEMO' sign starts flashing on the display.
- Press the preset button (**1...5**) to store the selected station.
- Press **MEMO/TIME SET** button again to complete the storing procedure.
  - The program indicator "MEMO" disappears from the display, and the preset number that was stored is shown in the right corner of the display.
- Repeat these steps for the other stations you wish to programme.

### Calling up preset stations

- Select the wave range with **FM MW SW1 SW2** switch.
- Press one of the **1...5** buttons.
  - The frequency and the PRESET number will appear on the display:





## CLOCK

### HOME/DUAL time display priority

Your YBP 2000 allows you to set two different times: HOME and DUAL. Normally, the HOME time has priority. You can also set the DUAL time to be displayed constantly.

- The **MODE** button toggles the display between HOME, DUAL and ALARM time indication. After 5 seconds, the display will return to the previous indication.
- Press **MODE** once. The DUAL time appears and the DUAL indication starts flashing.
- Press **MEMO/TIME SET** to display the dual time constantly.
  - DUAL stops flashing.
- To display the home time constantly again, press **MODE** twice and then **MEMO/TIME SET** while HOME is flashing.

### Setting the current time (HOME OR DUAL)

- Press **MODE** to set the display in HOME or DUAL time mode.
- Press **MEMO/TIME SET**.
  - The time digits start flashing.
- Use the **H ▲** button to set the hours and the **M ▼** button to set the minutes.
  - A single press of the **H ▲** or **M ▼** button advances the setting by 1 hour or 1 minute respectively. If the button is held pressed, the setting advances rapidly.
  - The minutes will not be carried over to the hours if, for example, the minutes indication changes from '59' to '00'.
- Press **MEMO/TIME SET** to store the setting
  - If you do not press **MEMO/TIME SET**, the display will return to the previous time setting after 5 seconds.

## ALARM

### Alarm function

You can use your world receiver as an alarm clock. To use this function you first have to set the alarm time. You will be woken with a bleep, or by the radio.

#### Setting the alarm time

- Press **MODE** repeatedly until ALARM starts flashing on the display.
- Press **MEMO/TIME SET**.
  - The time digits start flashing.
- Use the **H ▲** button to set the hours and the **M ▼** button to set the minutes (in the same way as the clock time).
- Press **MEMO/TIME SET** to store the setting
  - If you do not press **MEMO/TIME SET**, the display will return to the previous time setting after 5 seconds.

#### Selecting the alarm mode

- Use the **RADIO/BUZZ** switch to select the alarm mode.

#### Switching the alarm on

- Press **ALARM**.
  - 'ALARM' and the symbol for the selected alarm mode (☞/☛) will appear on the display:



#### Switching the alarm off

- Press **ALARM**.
  - The alarm signs will disappear.
- When the alarm sounds, you can also switch the alarm off by pressing the **POWER** button.

## SLEEP

### Sleep function

Your world receiver is equipped with a sleep function. It enables you to continue listening to the radio while you fall asleep. After 90, 80, 70 .... 10 minutes the radio will be switched off automatically.

#### Switching the sleep function on

- Press **POWER** to turn on the radio.
- Press the **SLEEP** button. The display shows the 'SLEEP' indication and the preset sleep time ('50').
- Keep **H ▲** or **M ▼** pressed until the desired sleep time (10...90) is reached.
- The 'SLEEP' indication and the sleep time you have selected will appear on the display.
- After 5 seconds, the display will switch to indication of the frequency.



#### Switching the sleep function off

The sleep function can be switched off before the set time has elapsed:

- Press **POWER** once briefly.
- The 'SLEEP' indication will disappear from the display.
- Press **POWER** once more to switch the radio off.

## LOCK

### ◀ LOCK switch

By setting the **◀ LOCK** switch to the **LOCK** position, a function is no longer interrupted when a button is accidentally touched.

#### The LOCK-position is very useful:

- when carrying the radio with you, radio reception cannot be interrupted;
- when packing the radio or putting it away, it cannot be switched on accidentally.
- Set the **◀ LOCK** switch in the 'lock' position.
- The 'LOCK'-symbol will appear on the display:



- Now you can only adjust **VOLUME**, **FM MW SW1 SW2**, **MONO/STEREO** and **RADIO/BUZZ**.
- Reset the **◀ LOCK** switch in order to switch the lock function off again.

# GENERAL INFORMATION

## Technical specifications

<b>Power supply:</b>	Batteries: .....By 3x 1.5 V batteries (IEC LR 6)
	External supply: .....By a commercial 4.5 V DC mains unit
<b>Output power</b>	.....250 mW
<b>Built-in aerials</b>	.....Telescopic aerial for FM and SW
	.....Ferrite rod aerial for MW

### Connecting sockets

For external voltage supply DC 4.5V: .....Coaxial socket  
(outer diameter 5.5 mm, inner diameter 2.1 mm)  
Neutral conductor connected to chassis.

For earphone  $\Omega$ : .....Socket for jack plug of 3.5 mm  $\varnothing$ , 32 Ohm impedance

<b>Wavebands:</b>	FM: .....87.5 .....108 MHz
	MW (10 kHz steps): .....520 .....1710 kHz
	MW (9 kHz steps): .....522 .....1620 kHz
	SW1: .....2.30 .....7.40 MHz
	SW2: .....9.40 .....26.10 MHz

<b>Tuning steps:</b>	FM: .....50 kHz
	AM: .....5 kHz
	resp. MW: ..... / 9 / 10 kHz

<b>Dimensions</b>	(w x h x d): .....approx. 142 x 92 x 35 mm
<b>Weight:</b>	.....approx. 330 g
<b>Accessories:</b>	.....Ident card
	.....Instructions for use
	.....stereo in-earphones
	.....leather cover

**Subject to technical alterations and alterations in styling E. and O.E.**

## Maintenance

- Only a soft cloth which picks up dust should be used to clean the cabinet. Do not use aggressive polishes or cleaning agents.
- Do not leave the set for any length of time in direct sunlight or other places where high temperatures can occur, such as in a car which is parked in the sun.
- Rain, moisture (e.g. dripping and splashing) and excessive heat are bad for the radio and the batteries.



## Recycling

Please observe the local regulations regarding the disposal of packing materials, exhausted batteries and old equipment.

- All redundant packaging material has been omitted. We have done our utmost to make the packaging easily separable into three mono-materials:
  - cardboard (box),
  - expandable polystyrene (buffer)
  - polyethylene (bags, protective foam sheet)
- Your set consists of materials which can be recycled if disassembled by a specialized company.
- Do not dispose of exhausted batteries with your household waste.

## TROUBLESHOOTING

If a fault occurs, first check the points listed below before taking the set for repair.

If you are unable to remedy a problem by following these hints, consult your dealer or service centre.

**WARNING:** Under no circumstances should you try to repair the set yourself, as this would invalidate the guarantee.

Problem	Possible cause	Solution
Power button does not work	◀ <b>LOCK</b> switch is activated	Switch off the ▶ <b>LOCK</b> function
No sound	VOLUME is not adjusted Headphones are connected Batteries are exhausted Batteries are incorrectly inserted Mains adapter is not securely connected	Adjust the VOLUME Disconnect headphones Insert fresh batteries Insert the batteries correctly Connect the mains adapter properly
Poor sound quality	Batteries are nearly exhausted	Insert fresh batteries or use a mains adapter
Poor radio reception	Weak radio aerial signal  Interference by the vicinity of electrical equipment like TVs, video recorders, computers, thermostats, fluorescent lamps (TL), engines, etc.	Aim the aerial for best reception: FM: incline and rotate telescopic aerial MW: rotate the entire set SW: extend telescopic aerial vertically Keep the set away from electrical equipment
Alarm does not function	Alarm time is not adjusted Headphones are connected	Adjust the alarm time Disconnect the headphones
Set does not react to operation of any button	Electrostatic discharge  ◀ <b>LOCK</b> switch is activated	Switch off the set, disconnect the mains adapter/ remove the batteries, reconnect after a few minutes. Switch off the ▶ <b>LOCK</b> function
Malfunctioning and losing time settings and preset radio stations	Continued operation with weak batteries	<b>1</b> Remove the batteries <b>2</b> Press a paper clip through the <b>RESET</b> hole. <b>3</b> Insert fresh batteries <b>4</b> Readjust the time settings and the preset stations <b>Advice:</b> Set the ▶ <b>LOCK</b> switch to ON when packing the set or putting it away.