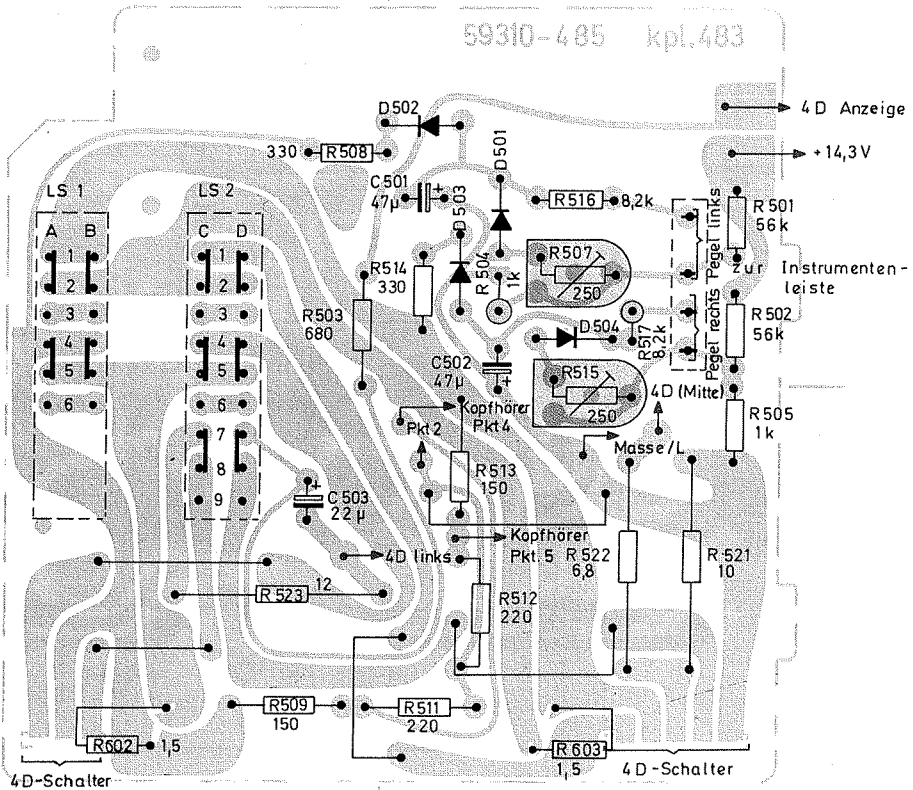


NF-Platte, Lötseite

AF PRINTED BOARD, SOLDER SIDE

PLAQUE BF, COTE DES SOUDURES

PIASTRA-BF, LATO SALDATURE

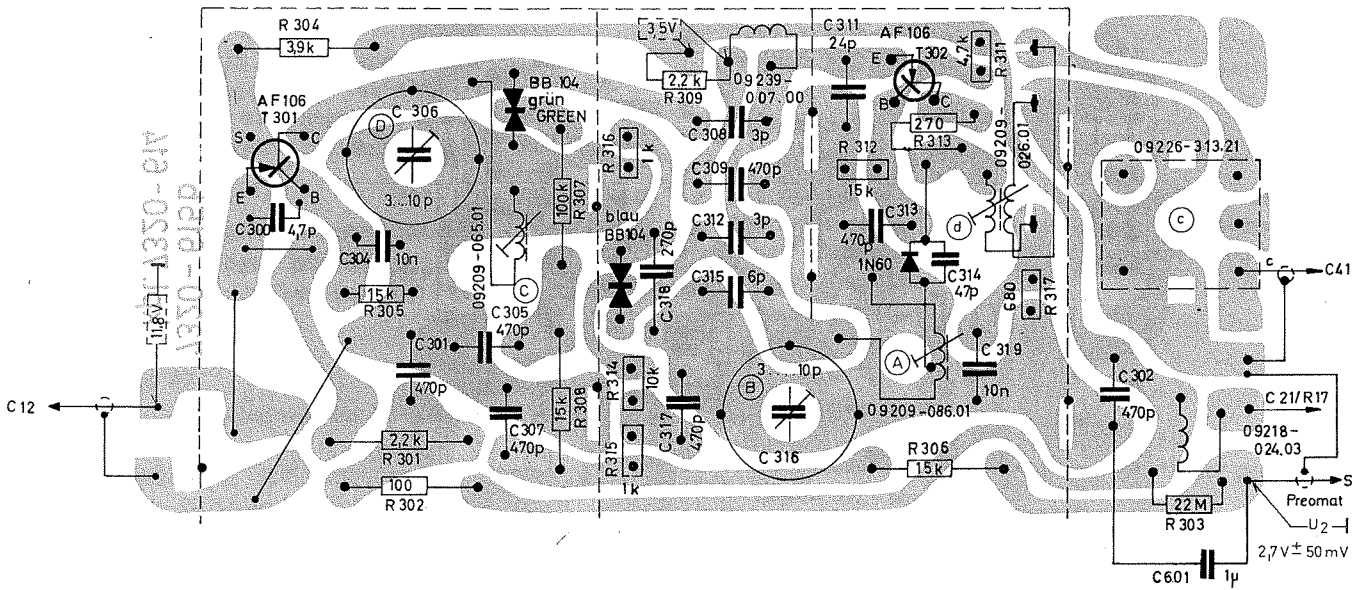


**UKW-Mischteil, Bestückungsseite**

MIXER STAGE, COMPONENT SIDE

MELANGEUR FM, COTE DES SOUDURES

SEZIONE-MESCOLATORE, LATO SALDATURE

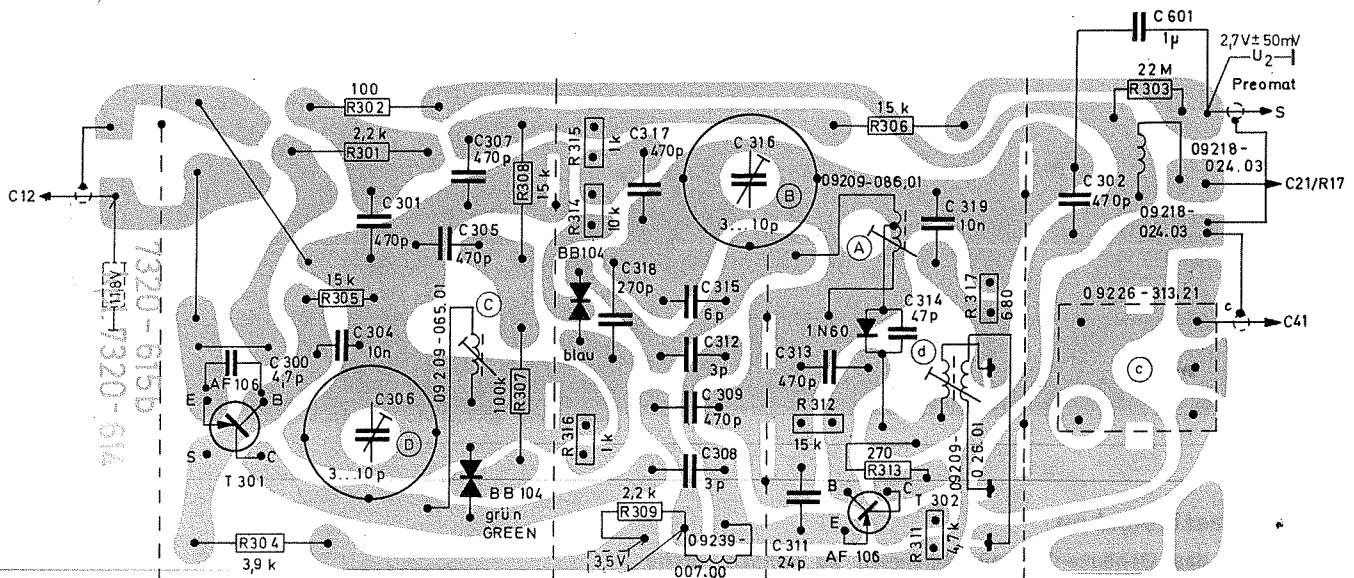


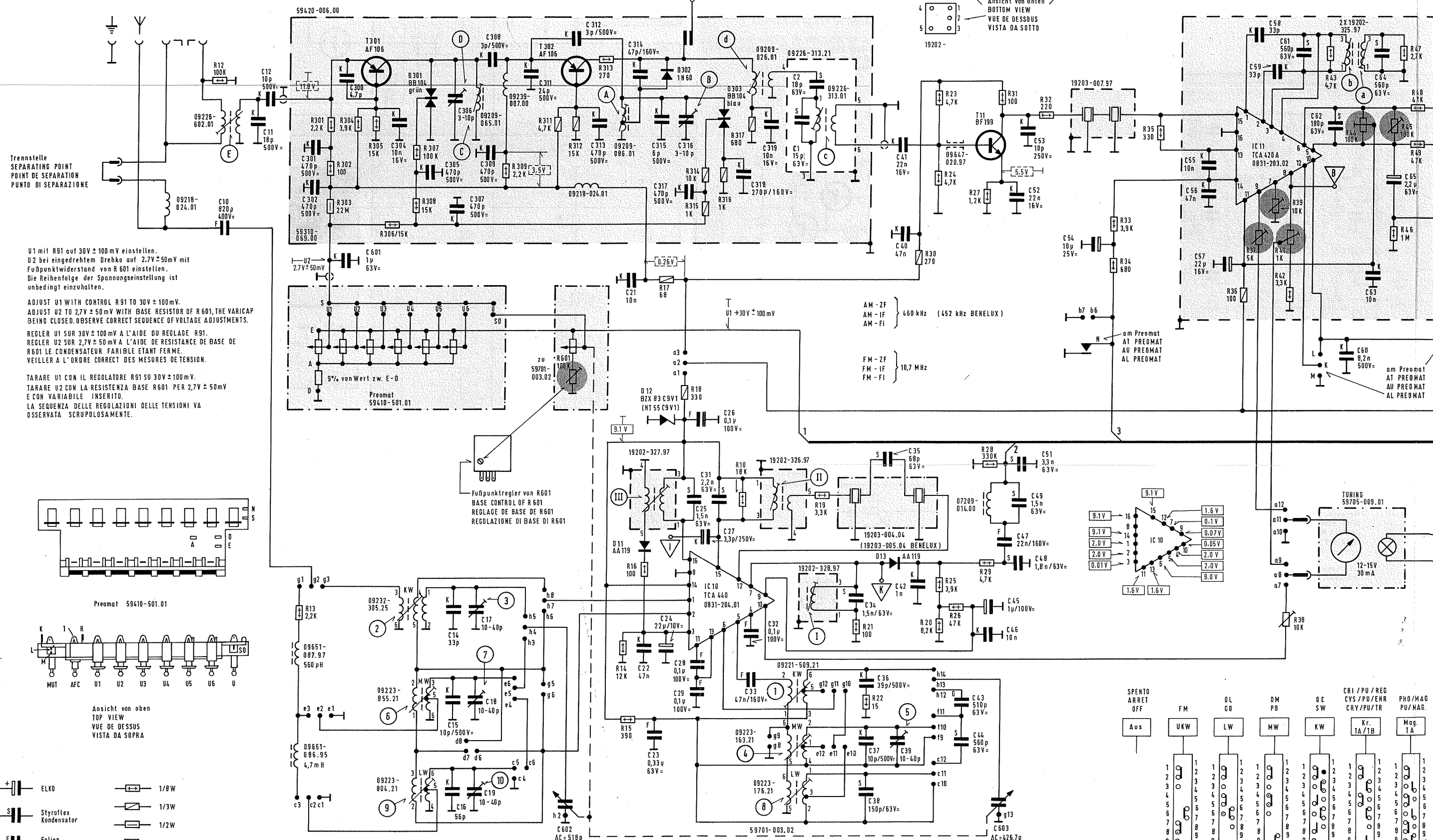
**UKW-Mischteil, Lötseite**

FM-MIXED STAGE, SOLDER SIDE

MELANGEUR-FM, COTE DES SOUDURES

SEZIONE MESCOLATRICE-FM, LATO SALDATURE





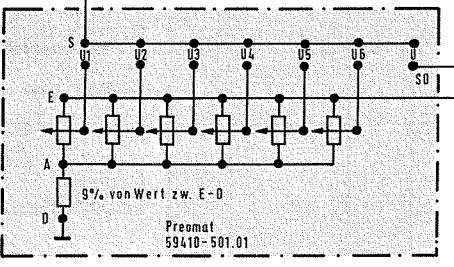
Trennstelle  
SEPARATING POINT  
POINT DE SEPARATION  
PUNTO DI SEPARAZIONE

U1 mit R91 auf 30V ± 100 mV einstellen.  
U2 bei eingedrehtem Drehko auf 2,7V ± 50 mV mit  
Fußpunktregler von R601 einstellen.  
Die Reihenfolge der Spannungseinstellung ist  
unbedingt einzuhalten.

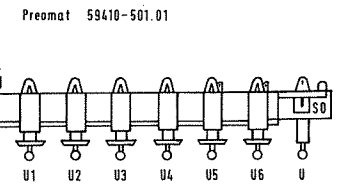
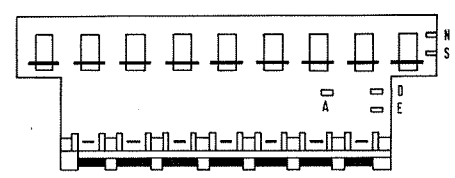
ADJUST U1 WITH CONTROL R91 TO 30V ± 100 mV.  
ADJUST U2 TO 2,7V ± 50 mV WITH BASE RESISTOR OF R601,  
THE VARICAP BEING CLOSED. OBSERVE CORRECT SEQUENCE OF VOLTAGE  
ADJUSTMENTS.

REGLER U1 SUR 30V ± 100 mV A L'AIDE DU REGLAGE R91.  
REGLER U2 SUR 2,7V ± 50 mV A L'AIDE DE LA RESISTANCE DE BASE DE  
R601 LE CONDENSATEUR VARICAP ETANT FERMÉ.  
VEILLER A L'ORDRE CORRECT DES MESURES DE TENSION.

TARARE U1 CON IL REGOLATORE R91 SU 30V ± 100 mV.  
TARARE U2 CON LA RESISTENZA BASE R601 PER 2,7V ± 50 mV  
E CON VARIABILE INSERITO.  
LA SEQUENZA DELLE REGOLAZIONI DELLE TENSIONI VA  
OSSERVATA SCRUPOLOSAMENTE.



Fußpunktregler von R601  
BASE CONTROL OF R601  
REGLAGE DE BASE DE R601  
REGOLAZIONE DI BASE DI R601



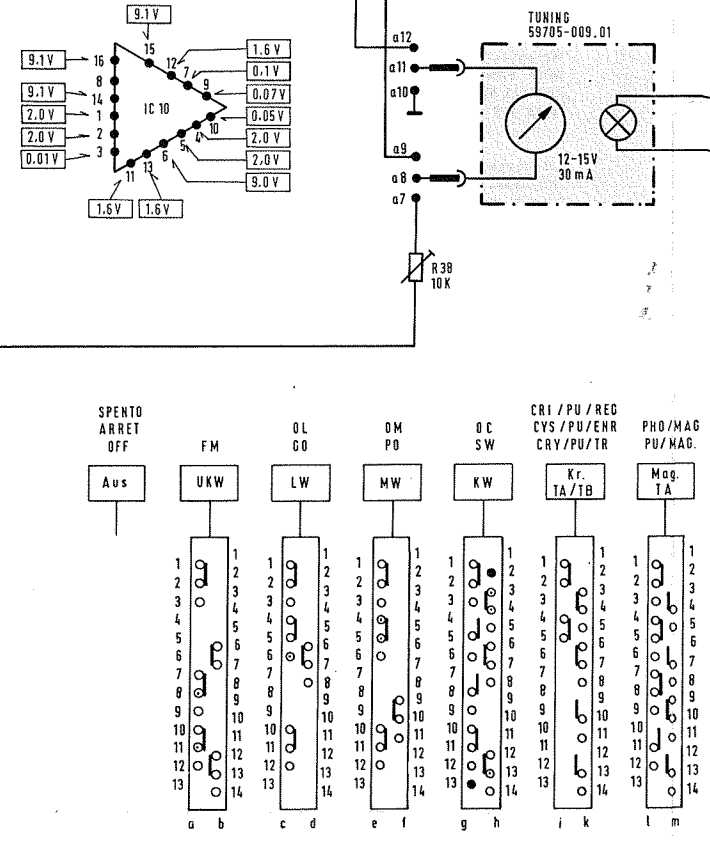
Ansicht von oben  
TOP VIEW  
VUE DE DESSUS  
VISTA DA SOPRA

- ELKO
- Styrolflex Kondensator
- Folien Kondensator
- Keramik Kondensator
- 1/8W
- 1/3W
- 1/2W
- Drahtwiderstand
- Metalloxydschicht-widerstand
- nicht brennbar

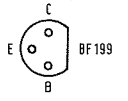
Wellenbereiche / WAVE BANDS  
GAMMES D'ONDES / GAMME D'ONDA

KW - SW - OC	5,4	16,2	MHz
MW - PO - OM	510	1620	kHz
LW - GO - OL	145	350	kHz
UKW - FM	87,5	108	MHz

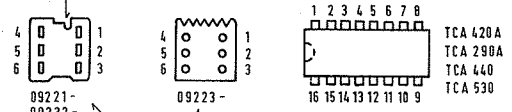
Spannungen, bei AM [FM], mit Grundig Voltmeter (Ri = 10 MΩ) ohne Signal gemessen, soweit nicht anders angegeben.  
VOLTAGES, AT [M] [FM], MEASURED WITH GRUNDIG VTM (Ri = 10 MΩ) WITHOUT SIGNAL, UNLESS OTHERWISE INDICATED.  
TENSIONS, AU [AM] [FM], MESUREES AVEC GRUNDIG VOLTMETRE (Ri = 10 MΩ) SANS SIGNAL, SAUF INDICATION CONTRAIRE.  
TENSIONI, PER [AM] [FM], MISURATE SENZA SEGNALE VOLTMETRO GRUNDIG (Ri = 10 MΩ), SE NON DIVERSAMENTE SPECIFICATO.



C:	10, 11, 12, 301, 601, 300, 304, 305, 306, 14, 307, 17, 15, 308, 18, 16, 309, 19, 311, 602, 312, 313, 314, 21, 22, 315, 23, 24, 25, 26, 29, 31, 318, 32, 316, 27, 319, 33, 317, 28, 34, 35, 38, 39, 42, 36, 40, 41, 37, 43, 603, 45, 47, 51, 44, 46, 48, 52, 49, 53, 54, 55, 57, 56,
R:	12, 13, 301, 304, 305, 306, 307, 308, 309, 611, 311, 312, 313, 14, 16, 17, 18, 314, 316, 317, 10, 19, 21, 22, 20, 23, 26, 27, 28, 31, 32, 24, 25, 33, 34, 35, 36, 37, 38, 42, 43, 44, 45, 46, 47, 48, 49, 51, 52, 53, 54, 55, 56, 57, 58, 59, 61, 62, 60, 63, 64, 65, 45, 46, 47, 48, 49,

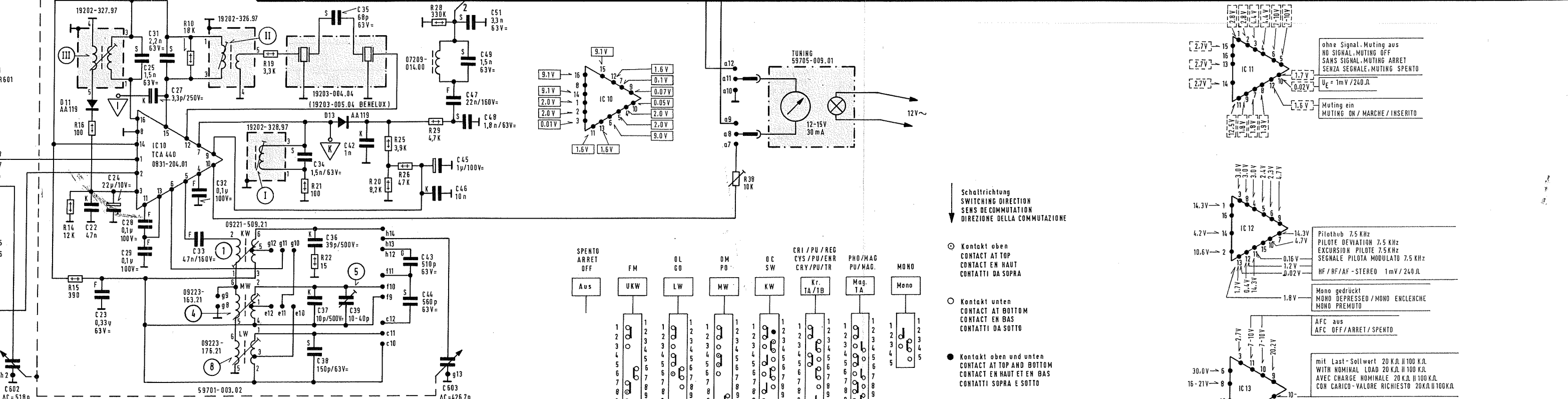
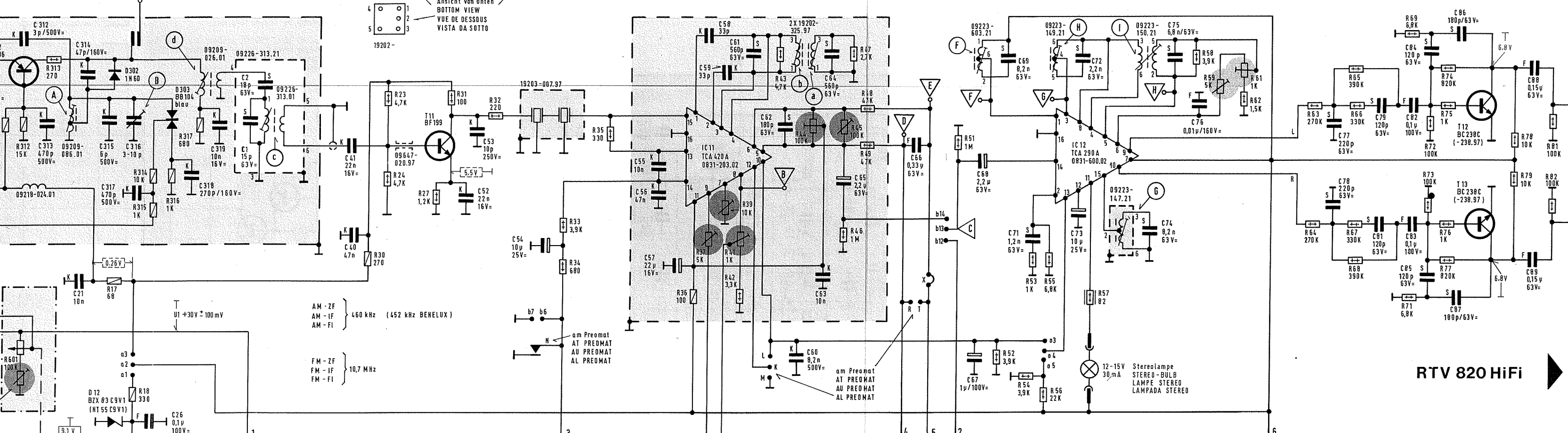


Kennmarke  
IDENTIFICATION MARK  
MARQUE DE REPERAGE  
SEGNO DI RIFERIMENTO



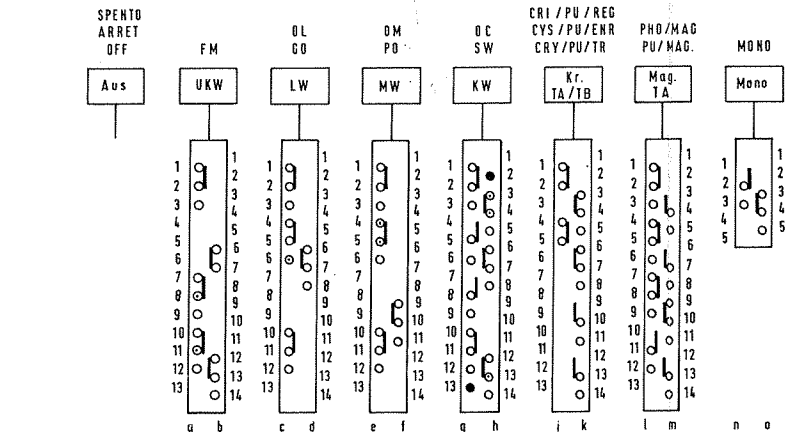
Chassisplatte  
CHASSIS BOARD  
PLAQUE CHASSIS  
PIASTRA CHASSIS

für Benelux  
FOR BENELUX  
POUR BENELUX  
PER BENELUX



RTV 820 HiFi

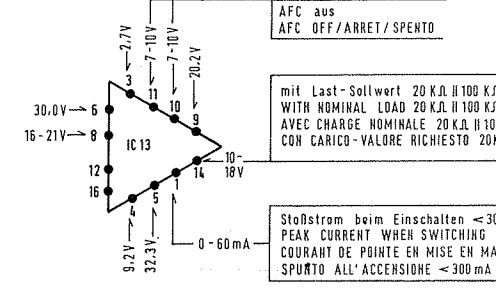
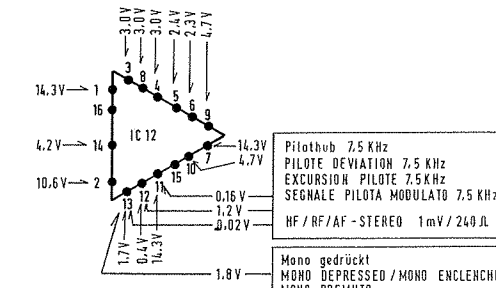
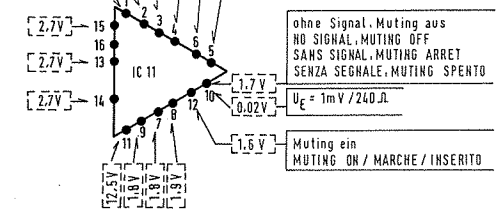
Spannungen, bei AM / FM, mit Grundig Voltmeter (Ri = 10 MΩ) ohne Signal gemessen, soweit nicht anders angegeben.  
VOLTAGES, AT M / FM, MEASURED WITH GRUNDIG VTM (Ri = 10 MΩ) WITHOUT SIGNAL, UNLESS OTHERWISE INDICATED.  
TENSIONS, AU AM / FM, MESUREES AVEC GRUNDIG VOLTMETRE (Ri = 10 MΩ) SANS SIGNAL, SAUF INDICATION CONTRAIRE.



Schaltrichtung  
SWITCHING DIRECTION  
SENS DE COMMUTATION  
DIREZIONE DELLA COMMUTAZIONE

- Kontakt oben  
CONTACT AT TOP  
CONTACT EN HAUT  
CONTATTI DA SOPRA
- Kontakt unten  
CONTACT AT BOTTOM  
CONTACT EN BAS  
CONTATTI DA SOTTO
- Kontakt oben und unten  
CONTACT AT TOP AND BOTTOM  
CONTACT EN HAUT ET EN BAS  
CONTATTI SOPRA E SOTTO

Ansicht von oben  
TOP VIEW  
VUE DE DESSUS  
VISTA DA SOPRA



ohne Signal, Muting aus  
NO SIGNAL, MUTING OFF  
SANS SIGNAL, MUTING ARRÊT  
SENZA SEGNALE, MUTING SPENTO  
U<sub>c</sub> = 1mV / 240 Ω  
Muting ein  
MUTING ON / MARCHE / INSERITO

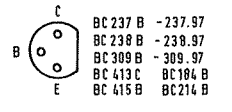
Pilothub 7,5 kHz  
PILOTE DEVIATION 7,5 kHz  
EXCURSION PILOTE 7,5 kHz  
SEGNALE PILOTA MODULATO 7,5 kHz  
HF / RF / AF - STEREO 1mV / 240 Ω  
Mono gedrückt  
MONO DEPRESSÉ / MONO ENLENCHE  
MONO PREMUTO

AFC aus  
AFC OFF / ARRÊT / SPENTO  
mit Last-Sollwert 20 kΩ H 100 kΩ  
WITH NOMINAL LOAD 20 kΩ H 100 kΩ  
AVEC CHARGE NOMINALE 20 kΩ H 100 kΩ  
CON CARICO - VALORE RICHIESTO 20 kΩ H 100 kΩ  
Stoßstrom beim Einschalten < 300 mA  
PEAK CURRENT WHEN SWITCHING ON < 300 mA  
COURANT DE POINTE EN MISE EN MARCHÉ < 300 mA  
SPURTO ALL'ACCENSIONE < 300 mA

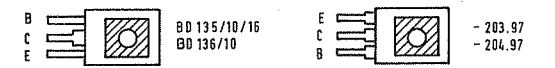
602, 312, 313, 314, 21, 22, 315, 23, 24, 25, 26, 29, 31, 318, 32, 316, 27, 319, 33, 317, 28, 315, 29	34, 35, 39, 39, 42, 36, 40, 41, 37, 37	43, 603, 45, 47, 51, 44, 46, 48, 52, 49, 53	54, 55, 57, 55	58, 59, 61, 62, 60, 63, 64, 65	67, 68, 69, 71	72, 73, 74, 75, 76	77, 78, 79, 81	82, 84, 83, 85, 86, 87
1, 312, 313, 14, 16, 17, 18, 314, 316, 317, 10, 15, 315	19, 21, 22	20, 23, 26, 27, 28, 31, 32, 24, 29, 25	33, 34, 35	36, 37, 38, 42, 43, 44, 45, 46, 47, 48, 49, 41	51, 52, 53, 54, 55, 56, 57	58, 59, 61, 62	63, 65, 67, 68, 69	69, 72, 74, 75, 71, 73, 75, 77



Anderungen vorbehalten  
ALTERATIONS RESERVED  
MODIFICATIONS RESERVEES  
CON RISERVA DI MODIFICA



R 423 R 424 59703-025.01 Höhen/TREBLE / AIGUS / ACUTI  
R 415 R 418 59703-026.01 Bass/BASS / GRAVES / BASSI  
R 412 R 413 59703-027.01 Lautstärke/VOLUME / PUISSANCE  
R 425 R 427 59703-028.01 BALANCE

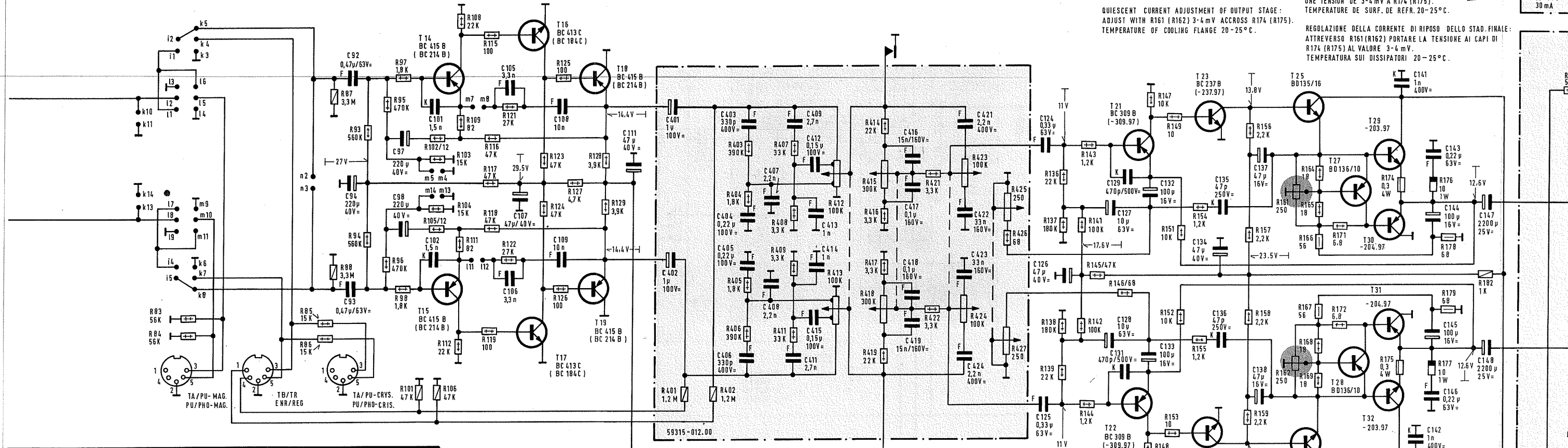


Ruheströmeinstellung der Endstufe:  
An R174 (R175) 3-4 mV mit R161 (R162) einstellen.  
Kühlflächentemperatur 20-25°C.

REGLAGE DU COURANT DE REPOS DE L'ETAGE DE SORTIE:  
REGLER AU MOYEN DE R161 (R162) UNE TENSION DE 3-4 mV A R174 (R175).  
TEMPERATURE DE SURF. DE REFR. 20-25°C.

QUIESCENT CURRENT ADJUSTMENT OF OUTPUT STAGE:  
ADJUST WITH R161 (R162) 3-4 mV ACROSS R174 (R175).  
TEMPERATURE OF COOLING FLANGE 20-25°C.

REGOLAZIONE DELLA CORRENTE DI RIPOSO DELLO STAD.FINALE:  
ATTREVERSO R161(R162) PORTARE LA TENSIONE AI CAPI DI R174 (R175) AL VALORE 3-4 mV.  
TEMPERATURA SUI DISSIPATORI 20-25°C.



TB:  
1 = Aufnahme Mono, Aufnahme Stereo links  
2 = Masse  
3 = Wiedergabe Mono, Wiedergabe Stereo links  
4 = Aufnahme Stereo rechts  
5 = Wiedergabe Stereo rechts

TA: (Magnet-Kristall)  
2 = Masse  
3 = Stereo links  
5 = Stereo rechts

TR:  
1 = RECORDING MONO, RECORDING L.H. STEREO  
2 = CHASSIS  
3 = PLAYBACK MONO, PLAYBACK L.H. STEREO  
4 = RECORDING R.H. STEREO  
5 = PLAYBACK R.H. STEREO

PU: (MAGNETIC - CRYSTAL)  
2 = GROUND  
3 = STEREO L.H. CHANNEL  
5 = STEREO R.H. CHANNEL

MAGNETOPHONE:  
1 = ENREGISTREMENT MONO, ENREGISTREMENT STEREO CANAL GAUCHE  
2 = MASSE  
3 = LECTURE MONO, LECTURE STEREO CANAL GAUCHE  
4 = ENREGISTREMENT STEREO CANAL DROIT  
5 = LECTURE STEREO CANAL DROIT

PU: (MAGNETIQUE - CRISTAL)  
2 = MASSE  
3 = STEREO CANAL GAUCHE  
5 = STEREO CANAL DROIT

TB:  
1 = PRESA MONO, PRESA STEREO SINISTRO  
2 = MASSA  
3 = RIPRODUZIONE MONO, RIPRODUZIONE STEREO SINISTRO  
4 = PRESA STEREO DESTRO  
5 = RIPRODUZIONE STEREO DESTRO

TA: (MAGNETICA - CRISTALLO)  
2 = MASSA  
3 = STEREO SINISTRO  
5 = STEREO DESTRO

Vornummer für Dioden und Transistoren.  
INDEX NUMBER FOR DIODES AND TRANSISTORS.  
CHIFFRES REPRES POUR DIODES ET TRANSISTORS.  
SIGLA PER DIODI E TRANSISTORI.

Ersatztypen in Klammern ( )  
INTERCHANGEABLE TYPES IN BRACKETS ( )  
TYPES DE RECHANGE EN PARENTHESES ( )  
TIPI DI RICAMBI IN ( )

ohne NF, aber 4D + Stereolampe ein  
WITHOUT AF, BUT 4D + STEREO - BULB ON  
SANS BF, MAIS 4D + LAMPE STEREO MARCHE  
SENZA NF, MA 4D + LAMPADA STEREO INSERITO

$P_A = 2 \times 10 \text{ W}$

4D + Stereolampe aus  
4D + STEREO - BULB OFF  
4D + STEREO - LAMPE ARRET  
4D + STEREO - LAMPADA SPENTO

schwarz  
BLACK  
NOIR  
NERO

ROSSO  
ROUGE  
RED  
ROU

blau  
BLUE  
BLEU  
BLU

GRIGIO  
GRIS  
GREY  
GRAY

BIANCO  
BLANC  
WHITE

Thermoschalter  
THERMO-SWITCH  
INTERRUPTEUR THERMOSTATIQUE  
INTERRUTTORE TERMICO

Leistungsaufnahme : ohne Signal bei Vollaus

POWER CONSUMPTION: APPROX. 19 AT MAXIMUM

CONSUMPTION ENV.: 19W SANS S A MODULATI

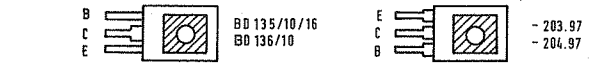
DISSIPAZIONE: SENZA SEGNA MASSIMO

Netz MAINS SECTEUR RESE

110-130-220-240V

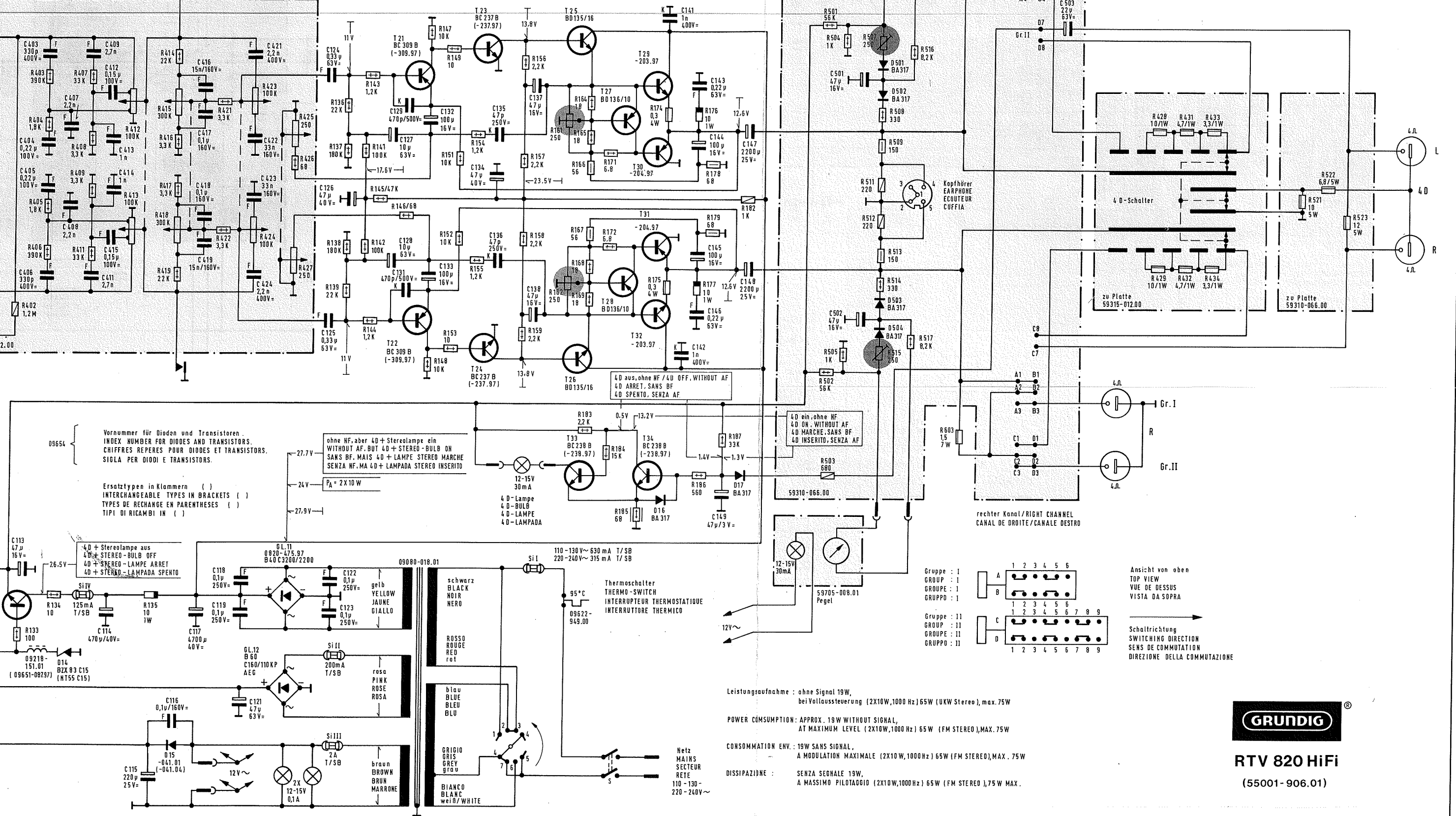
88	91	92	94	95	97	99	101	103	105	107	108	111	401	112	403	406	113	407	409	413	114	115	116	117	416	418	118	121	421	423	122	124	126	127	129	132	134	135	137	141	143	145	148	147	148	149	150	151	152	153	154	155	156	158	161	164	167	169	171	174	175	176	178	181	182	183	184	185	186	187	188	189	190	191	192	193	194	195	196	197	198	199	200	201	202	203	204	205	206	207	208	209	210	211	212	213	214	215	216	217	218	219	220	221	222	223	224	225	226	227	228	229	230	231	232	233	234	235	236	237	238	239	240	241	242	243	244	245	246	247	248	249	250	251	252	253	254	255	256	257	258	259	260	261	262	263	264	265	266	267	268	269	270	271	272	273	274	275	276	277	278	279	280	281	282	283	284	285	286	287	288	289	290	291	292	293	294	295	296	297	298	299	300	301	302	303	304	305	306	307	308	309	310	311	312	313	314	315	316	317	318	319	320	321	322	323	324	325	326	327	328	329	330	331	332	333	334	335	336	337	338	339	340	341	342	343	344	345	346	347	348	349	350	351	352	353	354	355	356	357	358	359	360	361	362	363	364	365	366	367	368	369	370	371	372	373	374	375	376	377	378	379	380	381	382	383	384	385	386	387	388	389	390	391	392	393	394	395	396	397	398	399	400	401	402	403	404	405	406	407	408	409	410	411	412	413	414	415	416	417	418	419	420	421	422	423	424	425	426	427	428	429	430	431	432	433	434	435	436	437	438	439	440	441	442	443	444	445	446	447	448	449	450	451	452	453	454	455	456	457	458	459	460	461	462	463	464	465	466	467	468	469	470	471	472	473	474	475	476	477	478	479	480	481	482	483	484	485	486	487	488	489	490	491	492	493	494	495	496	497	498	499	500	501	502	503	504	505	506	507	508	509	510	511	512	513	514	515	516	517	518	519	520	521	522	523	524	525	526	527	528	529	530	531	532	533	534	535	536	537	538	539	540	541	542	543	544	545	546	547	548	549	550	551	552	553	554	555	556	557	558	559	560	561	562	563	564	565	566	567	568	569	570	571	572	573	574	575	576	577	578	579	580	581	582	583	584	585	586	587	588	589	590	591	592	593	594	595	596	597	598	599	600	601	602	603	604	605	606	607	608	609	610	611	612	613	614	615	616	617	618	619	620	621	622	623	624	625	626	627	628	629	630	631	632	633	634	635	636	637	638	639	640	641	642	643	644	645	646	647	648	649	650	651	652	653	654	655	656	657	658	659	660	661	662	663	664	665	666	667	668	669	670	671	672	673	674	675	676	677	678	679	680	681	682	683	684	685	686	687	688	689	690	691	692	693	694	695	696	697	698	699	700	701	702	703	704	705	706	707	708	709	710	711	712	713	714	715	716	717	718	719	720	721	722	723	724	725	726	727	728	729	730	731	732	733	734	735	736	737	738	739	740	741	742	743	744	745	746	747	748	749	750	751	752	753	754	755	756	757	758	759	760	761	762	763	764	765	766	767	768	769	770	771	772	773	774	775	776	777	778	779	780	781	782	783	784	785	786	787	788	789	790	791	792	793	794	795	796	797	798	799	800	801	802	803	804	805	806	807	808	809	810	811	812	813	814	815	816	817	818	819	820	821	822	823	824	825	826	827	828	829	830	831	832	833	834	835	836	837	838	839	840	841	842	843	844	845	846	847	848	849	850	851	852	853	854	855	856	857	858	859	860	861	862	863	864	865	866	867	868	869	870	871	872	873	874	875	876	877	878	879	880	881	882	883	884	885	886	887	888	889	890	891	892	893	894	895	896	897	898	899	900	901	902	903	904	905	906	907	908	909	910	911	912	913	914	915	916	917	918	919	920	921	922	923	924	925	926	927	928	929	930	931	932	933	934	935	936	937	938	939	940	941	942	943	944	945	946	947	948	949	950	951	952	953	954	955	956	957	958	959	960	961	962	963	964	965	966	967	968	969	970	971	972	973	974	975	976	977	978	979	980	981	982	983	984	985	986	987	988	989	990	991	992	993	994	995	996	997	998	999	1000
----	----	----	----	----	----	----	-----	-----	-----	-----	-----	-----	-----	-----	-----	-----	-----	-----	-----	-----	-----	-----	-----	-----	-----	-----	-----	-----	-----	-----	-----	-----	-----	-----	-----	-----	-----	-----	-----	-----	-----	-----	-----	-----	-----	-----	-----	-----	-----	-----	-----	-----	-----	-----	-----	-----	-----	-----	-----	-----	-----	-----	-----	-----	-----	-----	-----	-----	-----	-----	-----	-----	-----	-----	-----	-----	-----	-----	-----	-----	-----	-----	-----	-----	-----	-----	-----	-----	-----	-----	-----	-----	-----	-----	-----	-----	-----	-----	-----	-----	-----	-----	-----	-----	-----	-----	-----	-----	-----	-----	-----	-----	-----	-----	-----	-----	-----	-----	-----	-----	-----	-----	-----	-----	-----	-----	-----	-----	-----	-----	-----	-----	-----	-----	-----	-----	-----	-----	-----	-----	-----	-----	-----	-----	-----	-----	-----	-----	-----	-----	-----	-----	-----	-----	-----	-----	-----	-----	-----	-----	-----	-----	-----	-----	-----	-----	-----	-----	-----	-----	-----	-----	-----	-----	-----	-----	-----	-----	-----	-----	-----	-----	-----	-----	-----	-----	-----	-----	-----	-----	-----	-----	-----	-----	-----	-----	-----	-----	-----	-----	-----	-----	-----	-----	-----	-----	-----	-----	-----	-----	-----	-----	-----	-----	-----	-----	-----	-----	-----	-----	-----	-----	-----	-----	-----	-----	-----	-----	-----	-----	-----	-----	-----	-----	-----	-----	-----	-----	-----	-----	-----	-----	-----	-----	-----	-----	-----	-----	-----	-----	-----	-----	-----	-----	-----	-----	-----	-----	-----	-----	-----	-----	-----	-----	-----	-----	-----	-----	-----	-----	-----	-----	-----	-----	-----	-----	-----	-----	-----	-----	-----	-----	-----	-----	-----	-----	-----	-----	-----	-----	-----	-----	-----	-----	-----	-----	-----	-----	-----	-----	-----	-----	-----	-----	-----	-----	-----	-----	-----	-----	-----	-----	-----	-----	-----	-----	-----	-----	-----	-----	-----	-----	-----	-----	-----	-----	-----	-----	-----	-----	-----	-----	-----	-----	-----	-----	-----	-----	-----	-----	-----	-----	-----	-----	-----	-----	-----	-----	-----	-----	-----	-----	-----	-----	-----	-----	-----	-----	-----	-----	-----	-----	-----	-----	-----	-----	-----	-----	-----	-----	-----	-----	-----	-----	-----	-----	-----	-----	-----	-----	-----	-----	-----	-----	-----	-----	-----	-----	-----	-----	-----	-----	-----	-----	-----	-----	-----	-----	-----	-----	-----	-----	-----	-----	-----	-----	-----	-----	-----	-----	-----	-----	-----	-----	-----	-----	-----	-----	-----	-----	-----	-----	-----	-----	-----	-----	-----	-----	-----	-----	-----	-----	-----	-----	-----	-----	-----	-----	-----	-----	-----	-----	-----	-----	-----	-----	-----	-----	-----	-----	-----	-----	-----	-----	-----	-----	-----	-----	-----	-----	-----	-----	-----	-----	-----	-----	-----	-----	-----	-----	-----	-----	-----	-----	-----	-----	-----	-----	-----	-----	-----	-----	-----	-----	-----	-----	-----	-----	-----	-----	-----	-----	-----	-----	-----	-----	-----	-----	-----	-----	-----	-----	-----	-----	-----	-----	-----	-----	-----	-----	-----	-----	-----	-----	-----	-----	-----	-----	-----	-----	-----	-----	-----	-----	-----	-----	-----	-----	-----	-----	-----	-----	-----	-----	-----	-----	-----	-----	-----	-----	-----	-----	-----	-----	-----	-----	-----	-----	-----	-----	-----	-----	-----	-----	-----	-----	-----	-----	-----	-----	-----	-----	-----	-----	-----	-----	-----	-----	-----	-----	-----	-----	-----	-----	-----	-----	-----	-----	-----	-----	-----	-----	-----	-----	-----	-----	-----	-----	-----	-----	-----	-----	-----	-----	-----	-----	-----	-----	-----	-----	-----	-----	-----	-----	-----	-----	-----	-----	-----	-----	-----	-----	-----	-----	-----	-----	-----	-----	-----	-----	-----	-----	-----	-----	-----	-----	-----	-----	-----	-----	-----	-----	-----	-----	-----	-----	-----	-----	-----	-----	-----	-----	-----	-----	-----	-----	-----	-----	-----	-----	-----	-----	-----	-----	-----	-----	-----	-----	-----	-----	-----	-----	-----	-----	-----	-----	-----	-----	-----	-----	-----	-----	-----	-----	-----	-----	-----	-----	-----	-----	-----	-----	-----	-----	-----	-----	-----	-----	-----	-----	-----	-----	-----	-----	-----	-----	-----	-----	-----	-----	-----	-----	-----	-----	-----	-----	-----	-----	-----	-----	-----	-----	-----	-----	-----	-----	-----	-----	-----	-----	-----	-----	-----	-----	-----	-----	-----	-----	-----	-----	-----	-----	-----	-----	-----	-----	-----	-----	-----	-----	-----	-----	-----	-----	-----	-----	-----	-----	-----	-----	-----	-----	-----	-----	-----	-----	-----	-----	-----	-----	-----	-----	-----	-----	-----	-----	-----	-----	-----	-----	-----	-----	-----	-----	-----	-----	-----	-----	-----	-----	-----	-----	-----	-----	-----	-----	-----	-----	-----	-----	-----	-----	-----	-----	-----	-----	-----	-----	-----	-----	-----	-----	-----	-----	-----	-----	-----	-----	-----	-----	-----	-----	-----	-----	-----	-----	-----	-----	-----	-----	-----	-----	-----	-----	-----	-----	-----	-----	-----	-----	-----	-----	-----	-----	-----	-----	-----	-----	-----	-----	-----	-----	-----	-----	-----	-----	-----	-----	-----	-----	-----	-----	-----	-----	-----	-----	-----	-----	-----	-----	-----	-----	-----	-----	-----	-----	-----	-----	-----	-----	-----	-----	-----	-----	-----	-----	-----	-----	-----	-----	-----	-----	------

R 423 R 424 59703-025.01 Höhen/TREBLE/AIGUS/ACUTI  
 R 415 R 418 59703-026.01 Bass/BASS/GRAVES/BASSI  
 R 412 R 413 59703-027.01 Lautstärke/VOLUME/PUISSANCE  
 R 425 R 427 59703-028.01 BALANCE



Ruheströmeinstellung der Endstufe:  
 An R174 (R175) 3-4 mV mit R161 (R162) einstellen.  
 Kühlflächentemperatur 20-25°C.

REGOLAZIONE DELLA CORRENTE DI RIPOSO DELLO STAD. FINALE:  
 ATTRAVERSO R161(R162) PORTARE LA TENSIONE AI CAPI DI  
 R174 (R175) AL VALORE 3-4 mV.  
 TEMPERATURA SUI DISSIPATORI 20-25°C.



Pegelinstrument bei 2X10W (1KHz) mit R507 (R515) auf 0 dB einstellen.  
 ADJUST OF LEVEL INDICATOR: ADJUST WITH R507 (R515) TO 0dB AT 2X10W (1KHz).  
 REGLAGE DE L'INDICATEUR DE NIVEAU: REGLER AU MOYEN DE R507 (R515) SUR 0dB A UNE PUISSANCE DE 2X10W (1KHz).  
 MEDIANTE REGOLAZIONE DELLE R507 (R515) PORTARE LO STRUMENTO AL VALORE 0dB NELLA CONDIZIONE DI FUNZIONAMENTO 2X10W (1KHz).

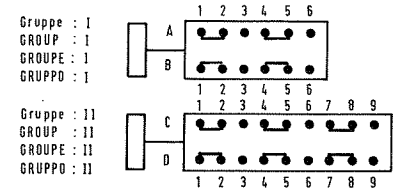
09654  
 Vornummer für Dioden und Transistoren.  
 INDEX NUMBER FOR DIODES AND TRANSISTORS.  
 CHIFFRES REPÈRES POUR DIODES ET TRANSISTORS.  
 SIGLA PER DIODI E TRANSISTORI.

Ersatztypen in Klammern ( )  
 INTERCHANGEABLE TYPES IN BRACKETS ( )  
 TYPES DE RECHANGE EN PARENTHESES ( )  
 TIPI DI RICAMBI IN ( )

ohne HF, aber 4D + Stereolampe ein  
 WITHOUT AF, BUT 4D + STEREO-BULB ON  
 SANS BF, MAIS 4D + LAMPES STEREO MARCHÉ  
 SENZA HF, MA 4D + LAMPADA STEREO INSERITO

4D aus, ohne HF / 4D OFF, WITHOUT AF  
 4D ARRET, SANS BF  
 4D SPENTO, SENZA AF

4D ein, ohne HF  
 4D ON, WITHOUT AF  
 4D MARCHÉ, SANS BF  
 4D INSERITO, SENZA AF



Ansicht von oben  
 TOP VIEW  
 VUE DE DESSUS  
 VISTA DA SOPRA

Schalrichtung  
 SWITCHING DIRECTION  
 SENS DE COMMUTATION  
 DIREZIONE DELLA COMMUTAZIONE

Leistungsaufnahme : ohne Signal 19W,  
 bei Vollaussteuerung (2X10W, 1000 Hz) 65W (UKW Stereo), max. 75W

POWER CONSUMPTION: APPROX. 19W WITHOUT SIGNAL,  
 AT MAXIMUM LEVEL (2X10W, 1000 Hz) 65W (FM STEREO), MAX. 75W

CONSUMATION ENV. : 19W SANS SIGNAL,  
 A MODULATION MAXIMALE (2X10W, 1000Hz) 65W (FM STEREO), MAX. 75W

DISSIPAZIONE : SENZA SEGNALE 19W,  
 A MASSIMO PILOTAGGIO (2X10W, 1000Hz) 65W (FM STEREO), 75W MAX.

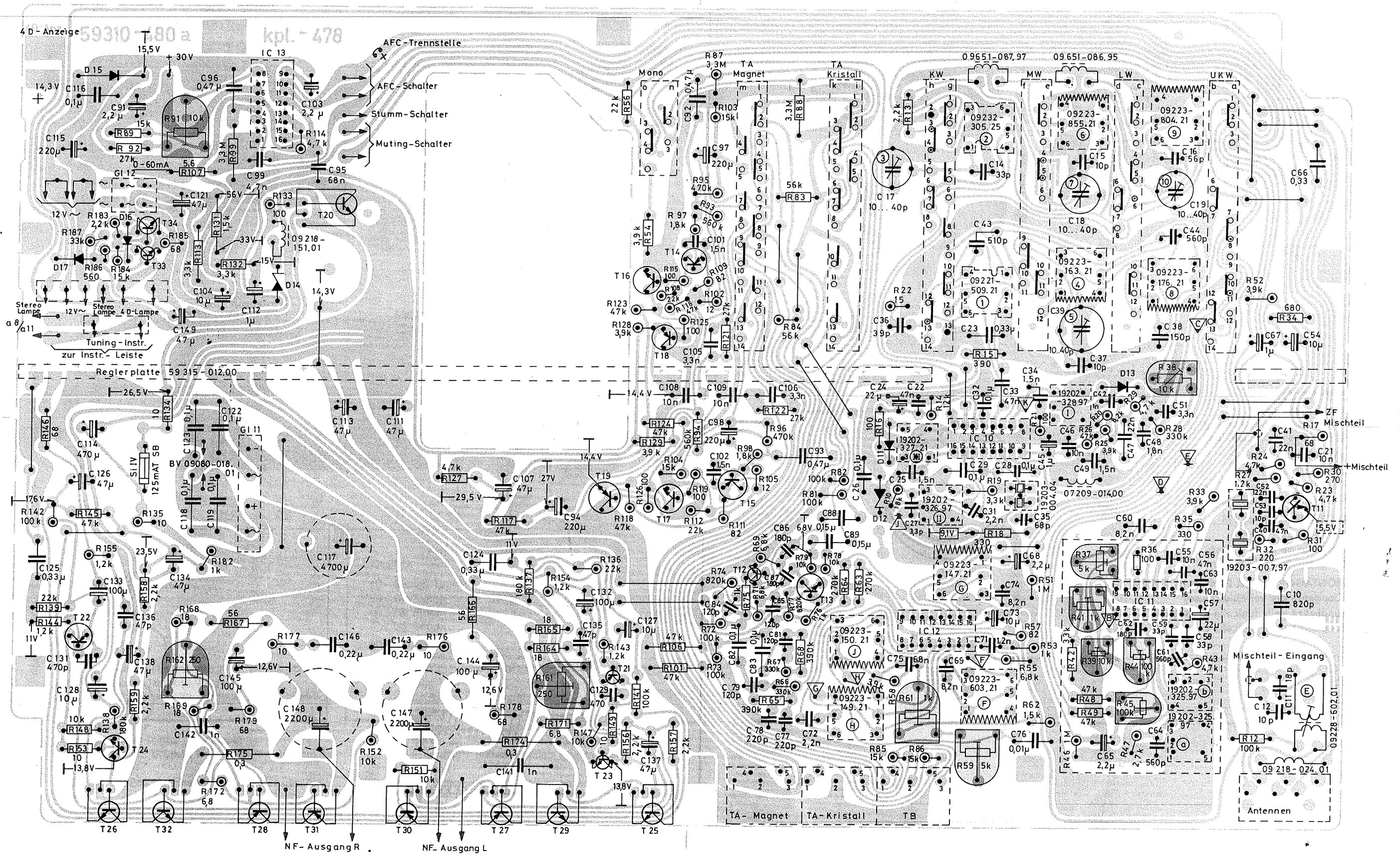
**GRUNDIG**

**RTV 820 HiFi**  
 (55001-906.01)

403, 406, 113, 404, 408, 411, 414, 415, 405, 409, 413, 114, 412, 415, 418, 419, 421, 423, 424, 425, 116, 117, 416, 417, 419, 119, 422, 424, 426, 122, 124, 126, 127, 129, 131, 132, 133, 134, 135, 136, 137, 138, 141, 143, 145, 149, 147, 142, 144, 146, 148, 151, 155, 156, 158, 161, 164, 167, 169, 171, 174, 175, 172, 185, 175, 186, 176, 178, 187, 187, 177, 179, 501, 502, 503, 504, 505, 509, 512, 515, 516, 517, 514, 517, 602, 603, 428, 431, 433, 429, 432, 434, 521, 522, 523,	C
407, 133, 403, 405, 134, 407, 411, 412, 135, 414, 417, 413, 415, 418, 419, 421, 423, 424, 425, 136, 138, 141, 143, 145, 146, 147, 149, 153, 154, 152, 159, 162, 165, 168, 166, 169, 157, 159, 162, 165, 168, 166, 169, 501, 504, 507, 508, 512, 515, 502, 505, 509, 513, 516, 511, 514, 517, 602, 603, 428, 431, 433, 429, 432, 434, 521, 522, 523,	R



Chassis-Platte, Lötseite  
 CHASSIS-BOARD, SOLDER SIDE  
 PLAQUE-CHASSIS, COTE DES SOUDURES  
 PIASTRA-CHASSIS, LATO SALDATURE

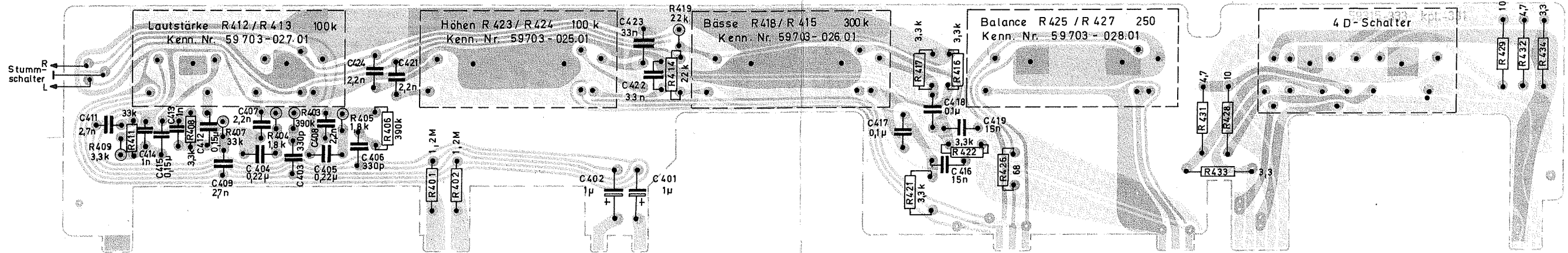


# Reglerplatte, Lötseite

POTENTIOMETER BOARD, SOLDER SIDE

PLAQUE DES POTENTIOMETRES, COTE DES SOUDURES

PIASTRA DI REGOLAZIONE, LATO SALDATURE



Lötseite  
SOLDER SIDE  
COTE DES SOUDURES  
LATO SALDATURE

Bestückungsseite  
COMPONENT SIDE  
COTE DES COMPOSANTS  
LATO COMPONENTI