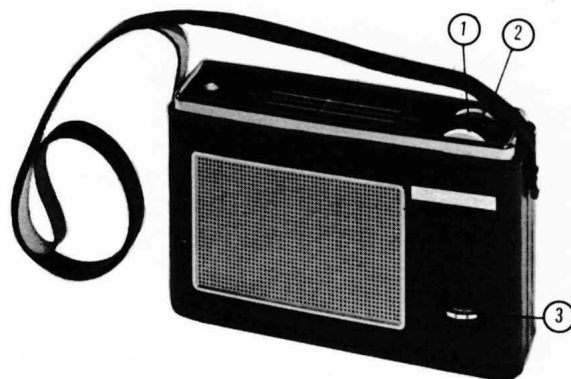


Service manual

RADIO 6233T/00R



TRA 2424A

- | | | |
|---|---|--|
| <p>① Tuning
Afstemming
Syntonisation C421
Abstimmung
Sintonia</p> | <p>② Wave range switch
Golgebied schakelaar
Commutateur des gammes d'ondes SK-A
Wellenbereichschalter
Commutatore di gamma d'onde</p> | <p>③ Volume+ on-off switch
Volume+ aan-uitschakelaar R466
Contr. de volume+interrupteur +
Lautstärke + Ein-Ausschalter SK-B
Controllo di volume+interruttore</p> |
|---|---|--|

Loudspeaker	15 Ω	Luidspreker	Haut-parleur	Lautsprecher	15 Ω	Altoparlante
IF	452 kHz	MF	FI	ZF	452 kHz	FI
Battery	6 V (4x1,5 V)	Batterij	Batterie	Batterie	6 V (4x1,5 V)	Batteria
Consumption (without signal)	17 mA	Verbruik (zonder signaal)	Consommation (sans signal)	Verbrauch (ohne Signal)	17 mA	Consumo (senza segnale)
Output	170 mW	Uitgangsver- mogen	Puissance de sortie	Ausgangs- leistung	170 mW	Potenza di uscita
Dimensions	110x175x45 mm	Afmetingen	Dimensionstons	Abmessungen	110x175x45 mm	Dimensioni

Wave ranges - Golgebieden - Gammes d'ondes - Wellenbereiche - Scala d'onde

MW - MG - PO - MW - OM : 148,5 - 258 kHz (2020-1163 m)
LW - LG - GO - LW - OL : 517 - 1622 kHz (580,3 - 185 m)

Transistors

TS401 - AF 127	TS403	AC127	} set 40818
TS402 - AF 127	TS404	AC132	
	TS405a	AC132	
	TS405b	AC127	

Diodes

D408 - AA119
D409 - BA114

Index: CS24055-CS24058

Wave range SK....					
MW (517-1622 kHz)	452 kHz / 33 nF		min		max ^①
	^② 33 nF				max
LW (148,5-258 kHz)	147 kHz		max		max
MW (517-1622 kHz)	1630 kHz		min	C421d	
Repeat - Herhalen - Répéter - Wiederholen - Ripetere					
LW (148,5-258 kHz)	190 kHz		190 kHz	S411c+d	max
MW (517-1622 kHz)	525 kHz		525 kHz	S411a+b	
	1300 kHz		1300 kHz	C421b	
Repeat - Herhalen - Répéter - Wiederholen - Ripetere					

(GB) ① After tuning (S414), find the frequency at which the output voltage is maximum. Then readjust if necessary.

② Frequency found under point ^① .

(NL) ① Na (S414) te hebben afgeregeld, frequentie opzoeken waarbij de uitgangsspanning maximaal is. Daarna eventueel natrimmen.

② Opgezochte frequentie onder punt ^① .

(F) ① Après la mise au point de (S414), chercher la fréquence à laquelle la tension de sortie est maximale; puis retoucher au besoin de .

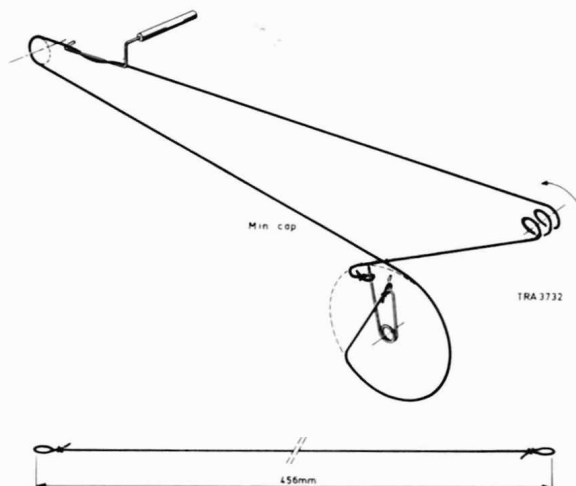
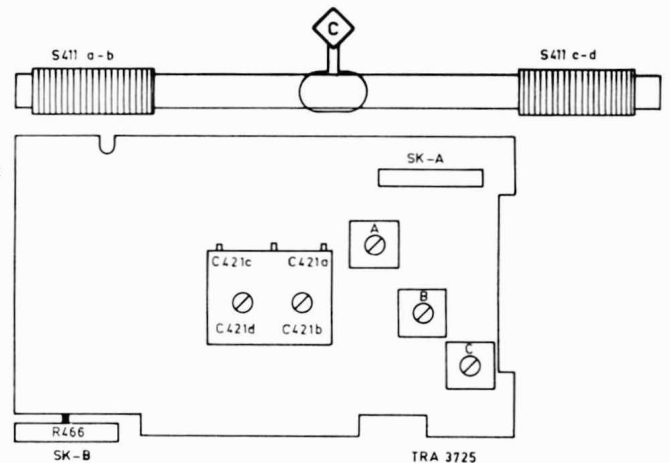
② Fréquence chercher en ^① .

(D) ① Nach Abgleich von (S414), Frequenz mit maximaler Ausgangsspannung ermitteln. Danach S414 gegebenenfalls nachtrimmen.

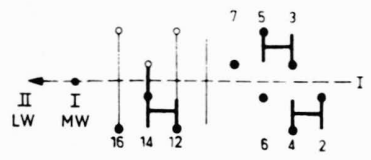
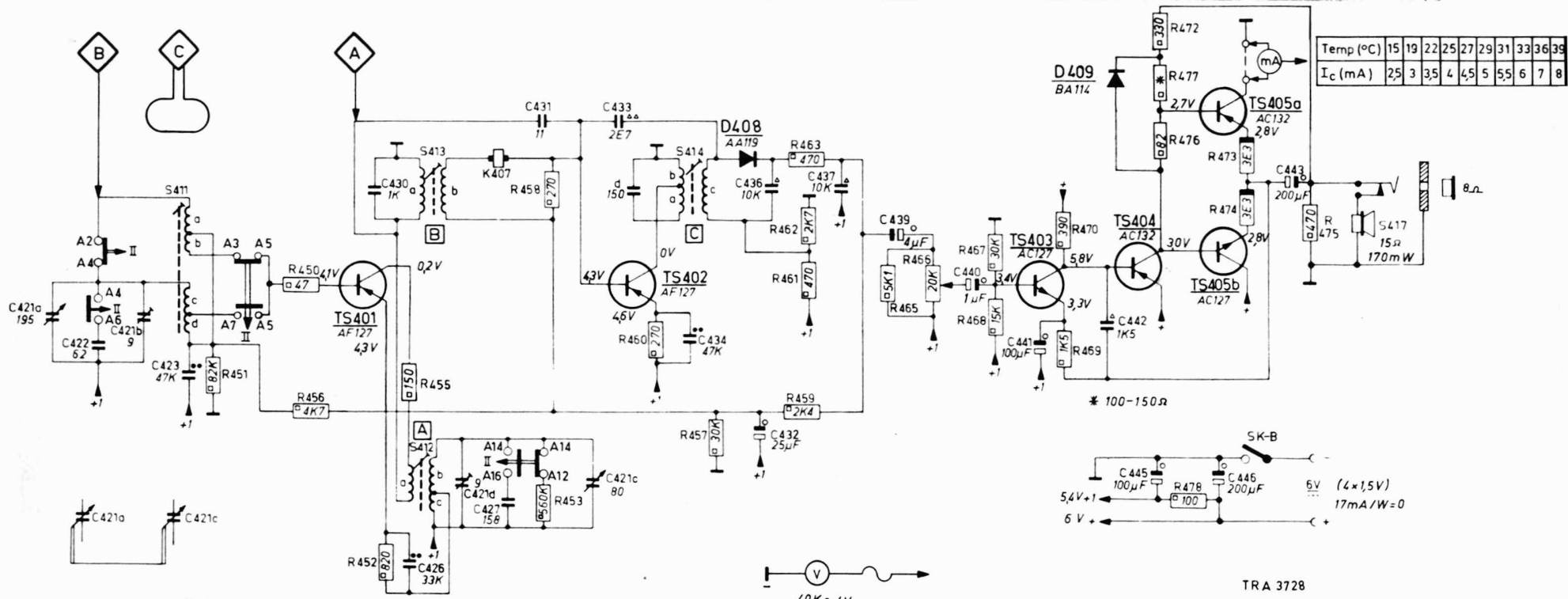
② Ermittelte Frequenz unter Punkt ^① .

(I) ① Dopo la messa a punto di (S414), cercare la frequenza alla quale la tensione è massima; dopo se necessario, riaggiustare S414.

② Frequenza trovata sotto ^① .



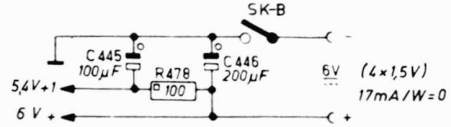
S	411	412	413	414	417	S																					
C	421a	422	421b	423	430	426	421d	427	431	421c	433	434	432	436	437	439	440	441	442	445	446	443	C				
R	451	450	456	452	455	453	458	460	457	459	462	461	463	465	466	467	468	470	469	476	472	477	478	473	474	475	R



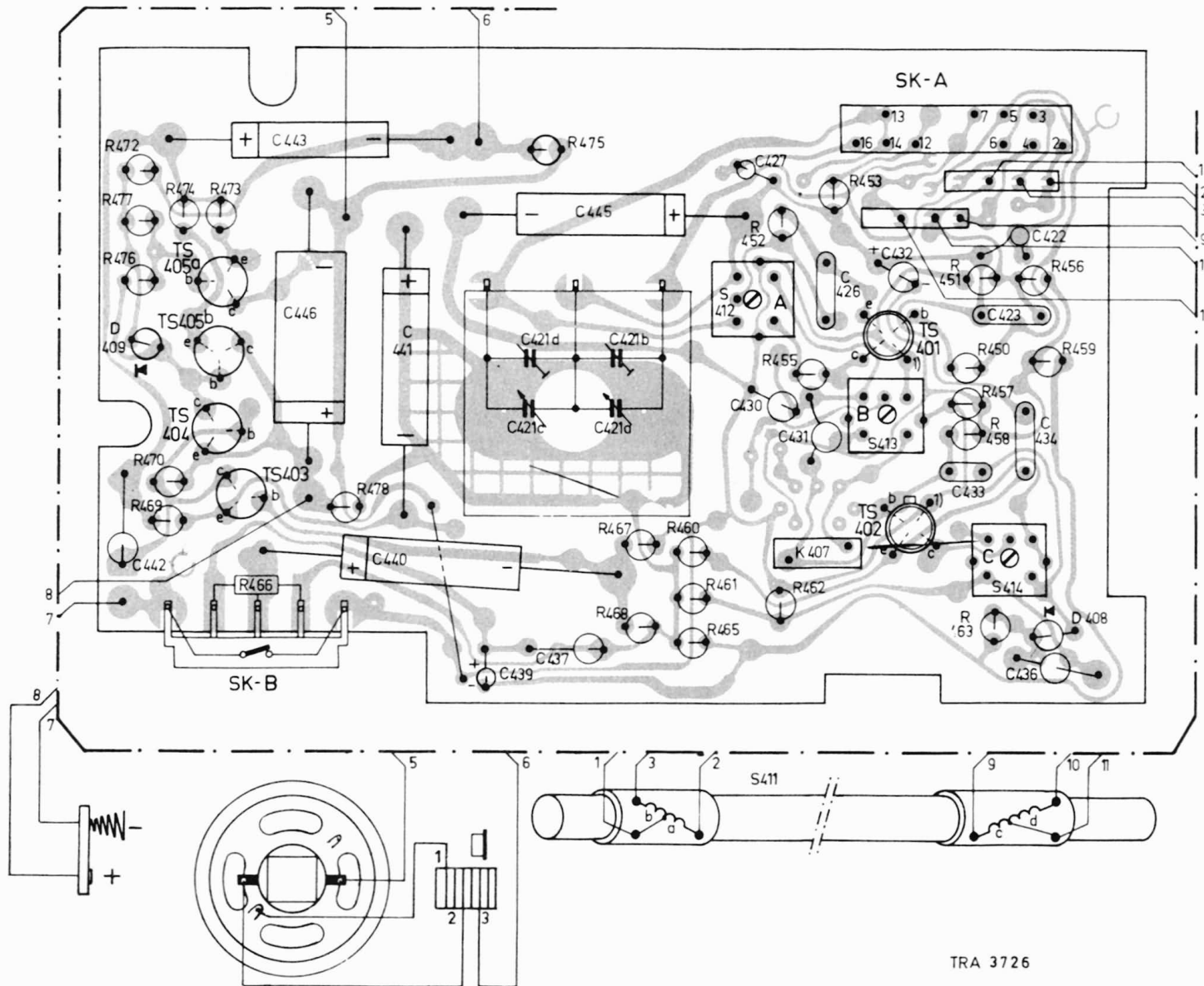
SK-A

I	MW - MG - PO - MW - OM
II	LW - LG - GO - LW - OL

- TRA 3728
- Carbon resistor E24 series 0.125 W 5%
 - Ceramic capacitor "Pin-up" 500 V
 - Plate ceramic capacitor
 - Flat-foil polyester capacitor
 - Miniature electrolytic capacitor

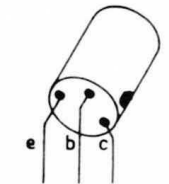
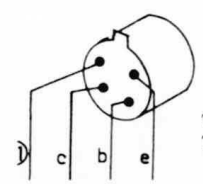
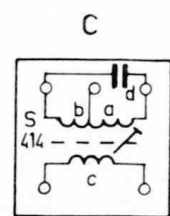
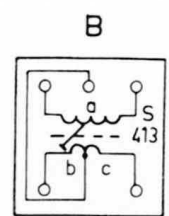
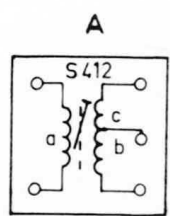
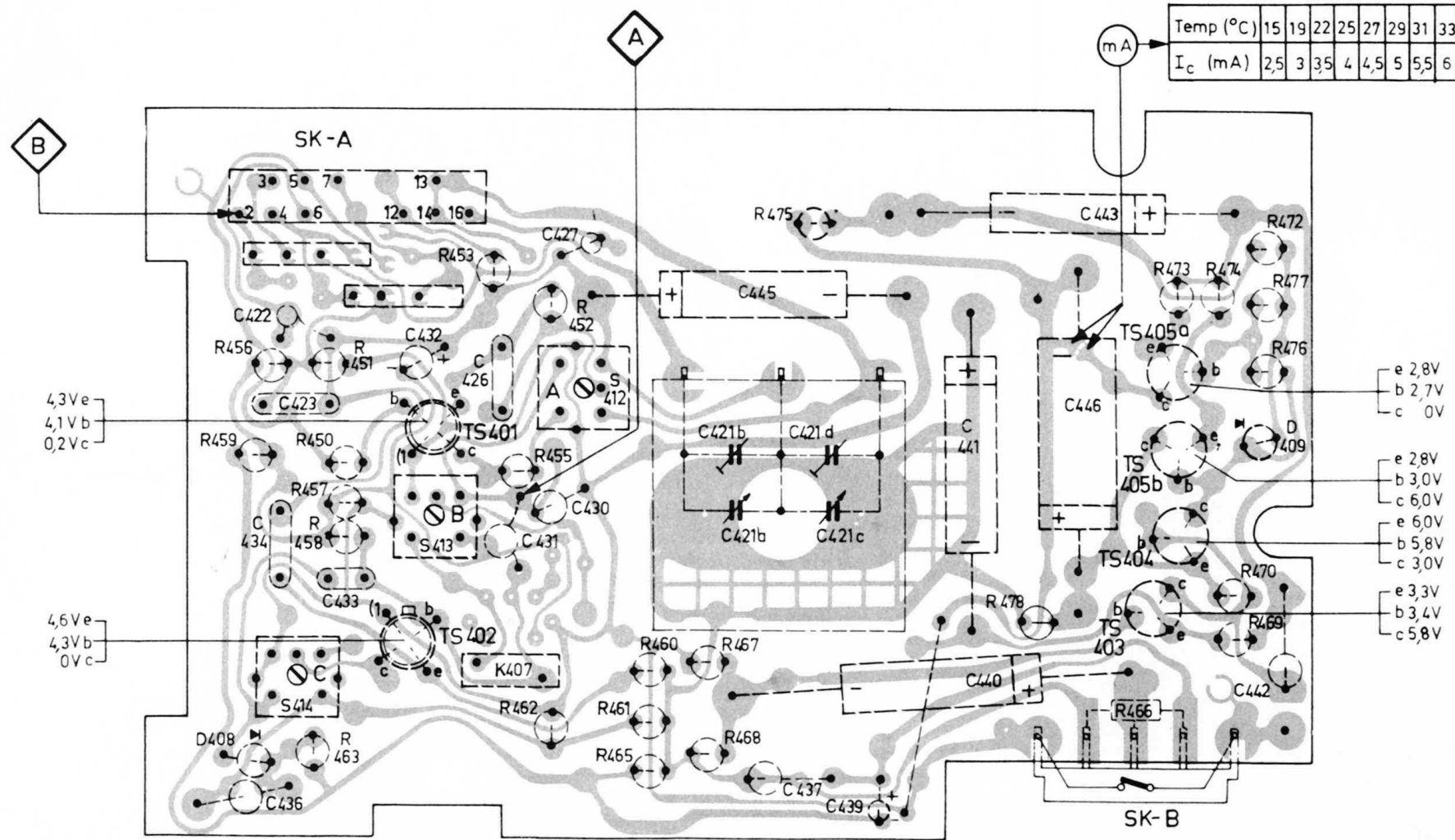


S								411	412		413		414	S						
C	442	443	446	440	441	439	437	421	445	430	427	431	426	432	433	423	422	434	436	C
R	472	477	476	474	473		478		475	467	452		453	451	450		456			R
R	470	469		466					468	460	461	465	455	462		463	457	458	459	R



S	414	413	412														S
C	436 434 422 423	433	432	426	431 427 430	445 437 421	439	441	440	446	443	442					C
R	456	450	451	453	452	467 475		478				473 474 476 477 472					R
R	459	458 457	463		462 455	465 461 460	468					466	469	470			R

Temp (°C)	15	19	22	25	27	29	31	33	36	39
I _c (mA)	2,5	3	3,5	4	4,5	5	5,5	6	7	8



TRA 3727