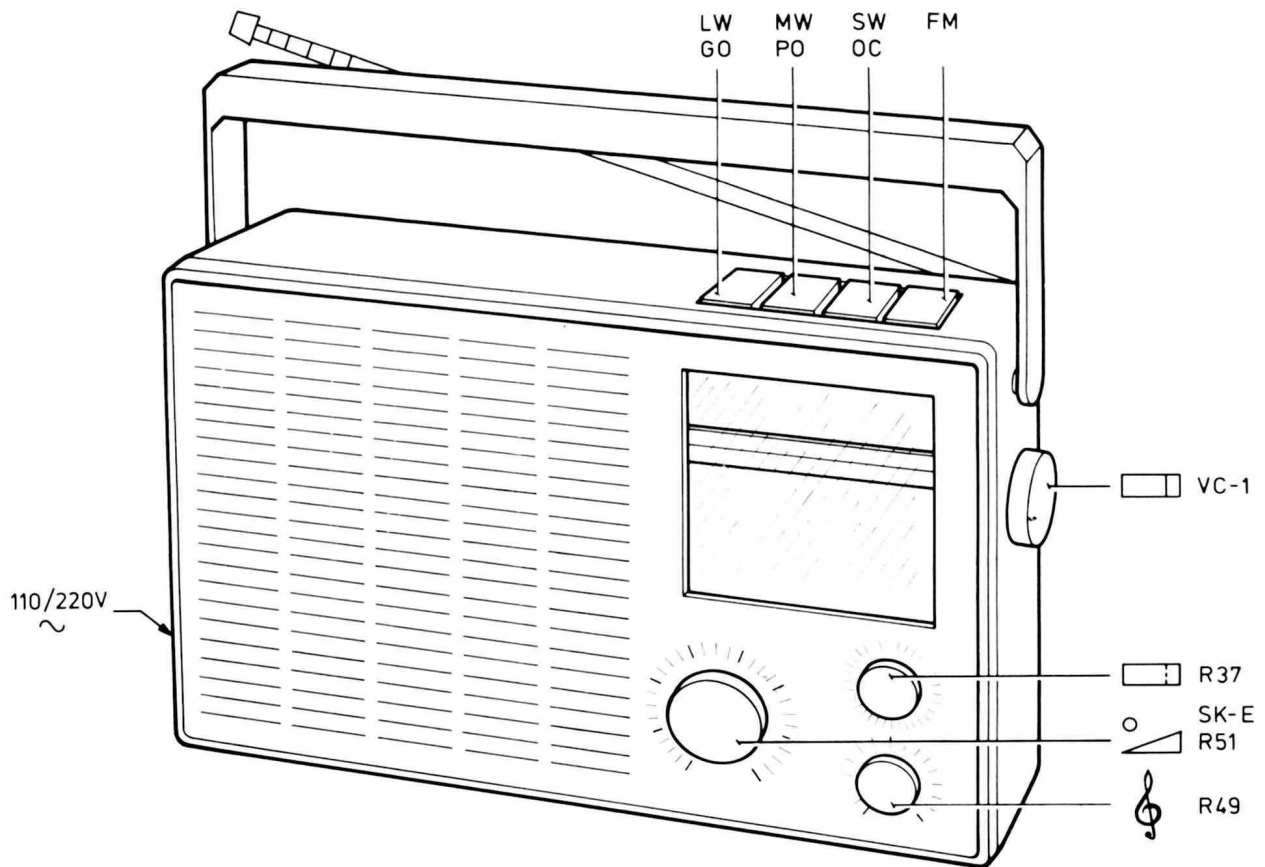


Service
Service
Service

Service Manual



LW / GO : 150 - 255 kHz (2000 - 1177m)
 MW / PO : 520 - 1605 kHz (577 - 187m)
 SW / OC : 5.95 - 15.45 MHz (50.4 - 19.4m)
 FM : 87.5 - 104 MHz

SUPPLY / SECTEUR : ⎓ 6V (4xR14)
 : 110 / 220V \sim

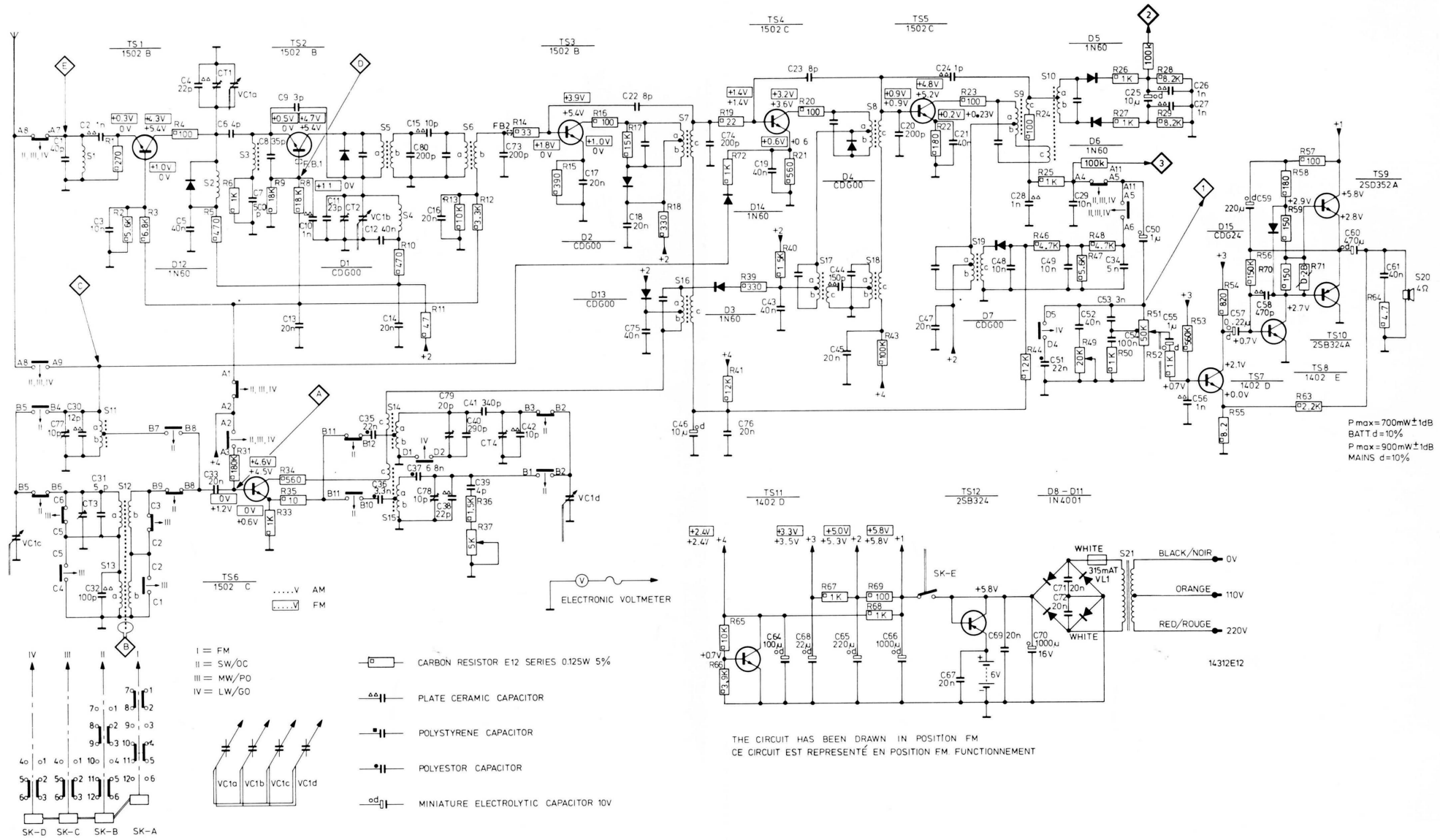
IF - AM = 468 kHz
 IF - FM = 10.7 MHz

OUTPUT / SORTIE : 700mW(d=10%) \pm 1dB (BATT. / PILES)
 900mW(d=10%) \pm 1dB (MAINS / SECTEUR)

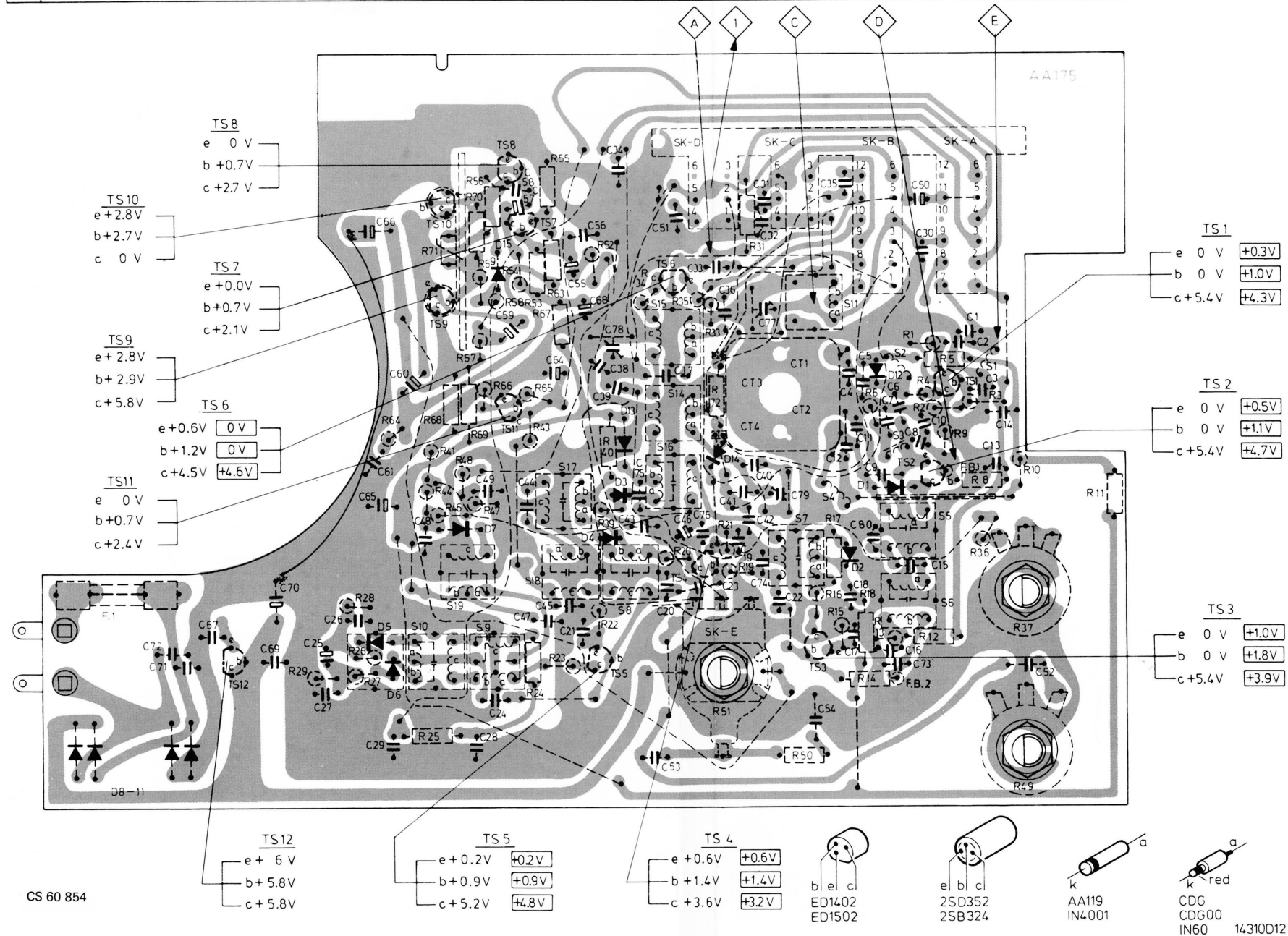
14545C12/A



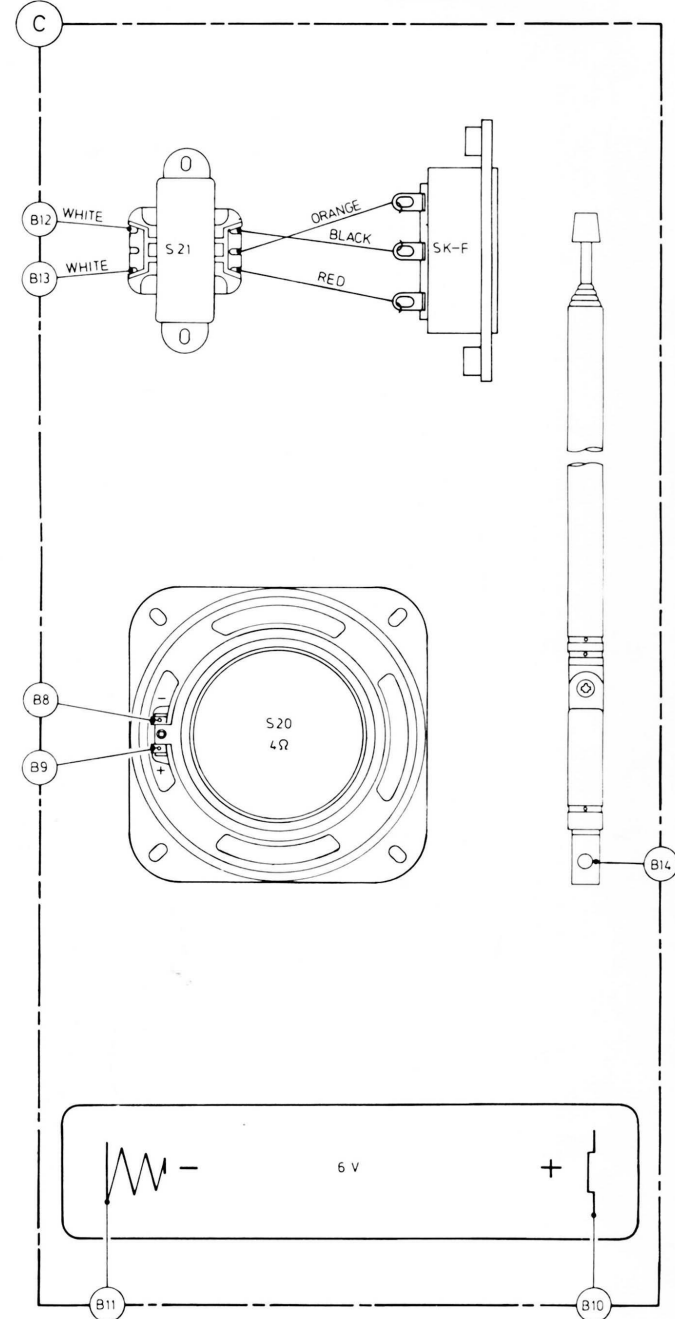
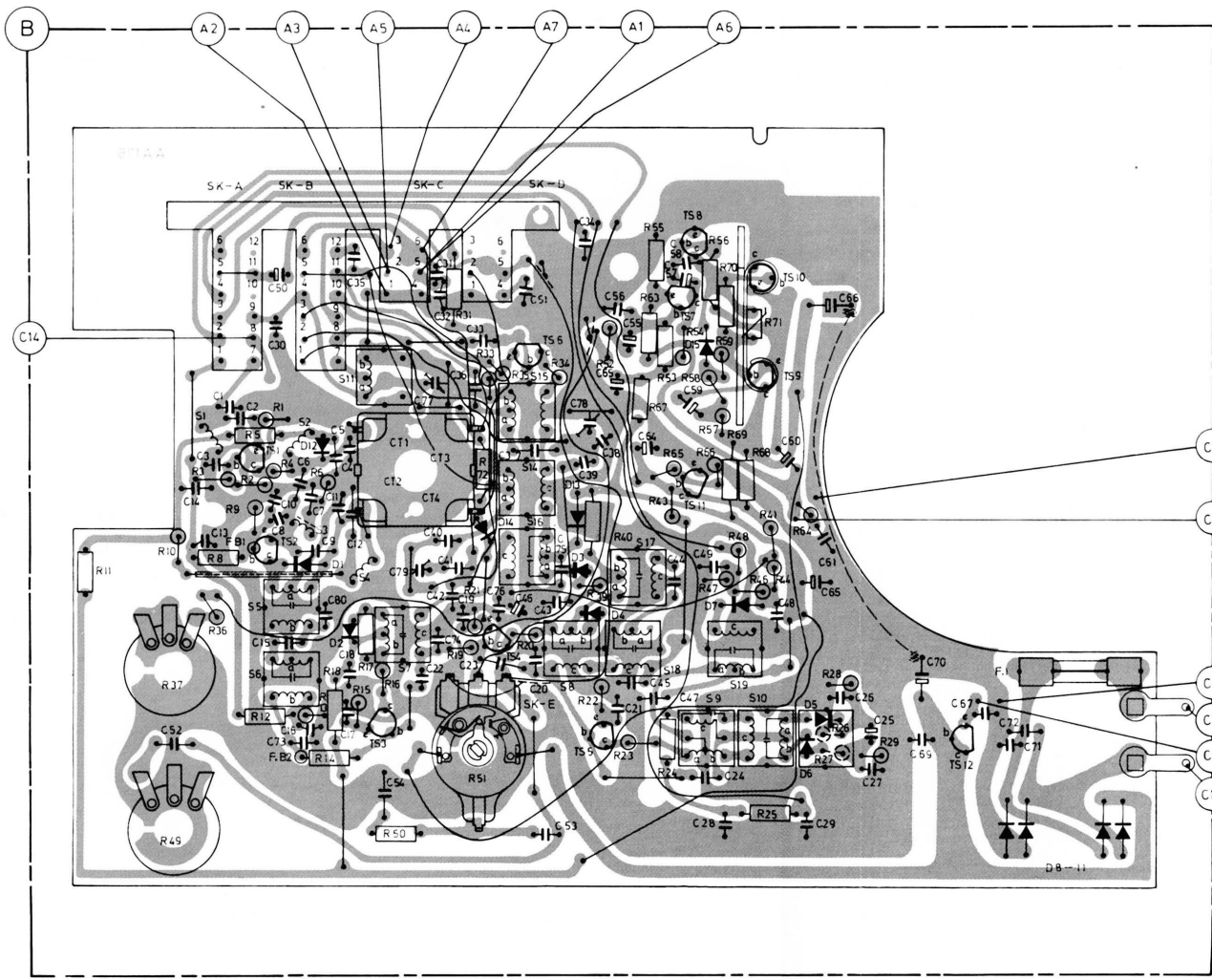
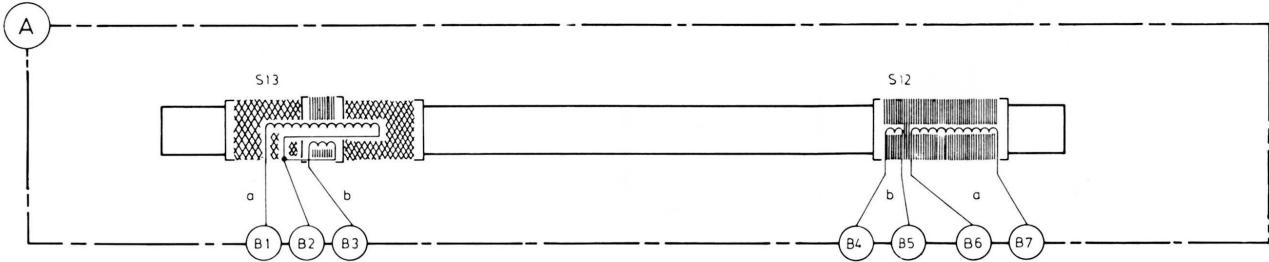
MISC	VC1c	S1	S2	TS1	CT1	VC1a	S3	TS2	D1	S5	S4	S6	F.B.2	TS3	D2	S7	D4	TS4	D4	S8	TS5	S19	D7	S9	S10	D5	S21	TS7	TS9													
	CT3	S11	S13		D12	S2	TS6	F.B.1	CT2	VC1b	S15		CT4	VC1d	D13	S16	D3	TS11	S17	S18		TS12	D8 - D11	D6	VL1		D15	TS8	TS10	S20												
R				1	4	5	31	9	34	8		10	13	35	12	14	16	17	19	41	39	21	20	69	43	22	23	24	46	47	48	26	28	53	54	56	58	71	57			
				2	3		6	33	35		11	37		15	18		72	65	66	40	67						44	25	49	50	27	51	29	52	55	70	63	59	64			
C	1	2	31		4	5	8	9	10	35	12	80	15	16	79	41	73		17		22		14	19	43	23	44	20	24	21	48	28	49	71	29	53	34	25	26	56	59	60
	77	30	32		5	33	7	13	11	36	14	37	38	38	40	39	42		18	75	46	74	76	64	68	45	65	66	47	67	69	70	51	72	52	54	50	27	55	57	58	61



MISC	F.1	TS12	D5	TS10	TS9	D7	TS11	S18	S17	TS5	D13	S15	TS6	SK-D	D14	CT3	SK-C	CT1	S7	S11	SK-B	S3	TS2	S5	SK-A	S1																				
	D8-11		D6	S10	S9	S9D15	TS8	TS7	D4	S8	D3	S16	S14	TS4	SK-E	CT4	CT2	D2	D1	D12	S2	FB2	S6	TS1	F.B.1																					
C	71	67	69	25	26	65	66	60	48	49	59	58	57	64	21	56	34	38	75	51	20	46	76	41	36	31	32	19	79	54	35	4	5	76	50	15	10	1	2	3	52					
	72		70	27		61	29	28	24	44	45	55	68	78	39	43	53	37	33	23	42	40	77	74	22	12	11	17	18	9	80	8	16	73	30						13	14				
R			29	28	27	64	71	44	41	48	59	69	54	53	67	55	52	40	34	35	51	31	50	17	6	13	1	12	5	3	36	37													11	
			26	25	68	46	56	70	57	58	47	66	65	43	24	63	23	39	22	20	33	72	21	19																						

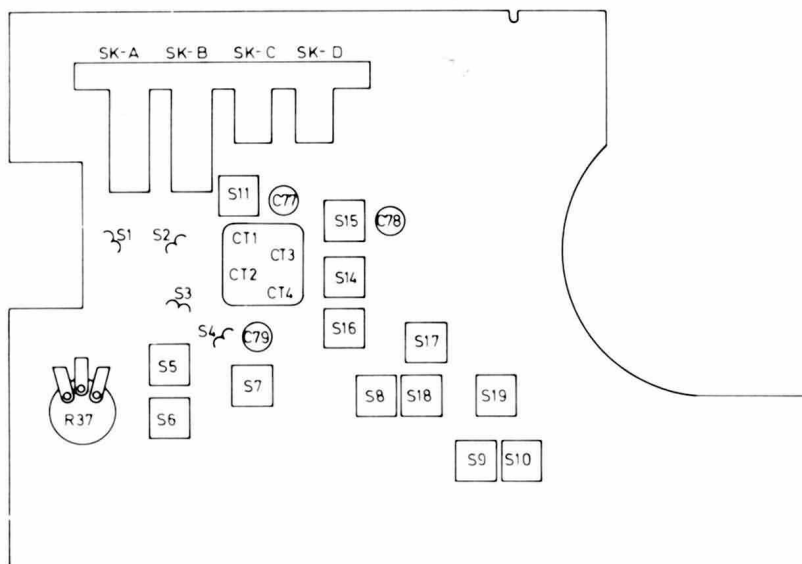
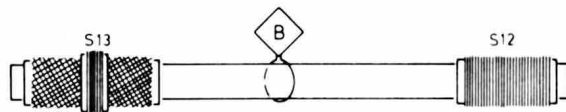


MISC	SK-A S13 TS1 S5 S2 SK-B D1 S11 TS3 CT1 CT3 SK-C SK-E SK-D S8 D13 D4 S17 TS8 TS7 S19 TS10 TS9 S12 TS12 F.1	S21	S20	SK-F
C	FB1 FB2 TS2 S6 S3 D12 D2 S4 S7 CT2 CT4 D14 TS4 S15 S14 S16 D3 S18 D15 TS11 S9 D7 S10 D5 D6 D8-11			
R	52 14 3 13 2 15 8 16 7 11 5 4 12 35 79 31 32 22 74 36 33 46 43 75 78 34 38 56 64 58 44 47 28 48 29 66 25 70 67 71			
	50 30 73 10 6 9 80 18 17 54 77 40 41 42 19 23 37 51 20 53 39 65 21 55 45 57 59 49 24 60 61 65 26 27 69 72			
	11 10 3 8 2 5 1 4 6 18 17 16 31 51 72 34 52 40 54 67 55 63 65 56 70 57 47 48 71 44 64 25 27			
	37 49 36 12 9 13 14 15 50 19 21 33 35 20 39 22 23 24 52 43 58 59 66 69 68 41 46 26 28 29			



Wave range	Signal to		Var. cap.	Detune	Adjust	Indication
SK A-D						
MW (520-1605 kHz)	1 via 39 nF	A	Min. cap.	S16,S17 S18,S19	S19	1 max.
					S18	
					S17	
					S16	
	512 kHz	B	Max. cap.	S14		
1635 kHz	Min. cap.		CT4			
555 kHz	Tune in		S12			
1500 kHz			CT3			
LW (150-255 kHz)	147 kHz	B	Max. cap.		C79	1 max.
	200 kHz		Tune in		S13	
SW (5.95-15.45 MHz)	5.8 MHz	C	Max. cap.		S15	1 max.
	16 MHz		Min. cap.		C78	
	6.2 MHz				S11	
	15 MHz		via 5 pF		C77	
FM (87.5-104 MHz)	10.7 MHz via 22 nF	D	Min. cap.	S9,8,7 S6,5	S9	2 3
					S8	
					S7	
					S6	
					S5	
					S10	3 4
	86,5 MHz	E	Max. cap.		S4	1 max.
	104 MHz		Min. cap.		CT2	
	88 MHz		Tune in		S2	
102 MHz			CT1			

↓ Repeat - Herhalen - Répéter - Wiederholen - Repetera - Ricominciare - Gentage - Gjentagelse - Toista



14309B12