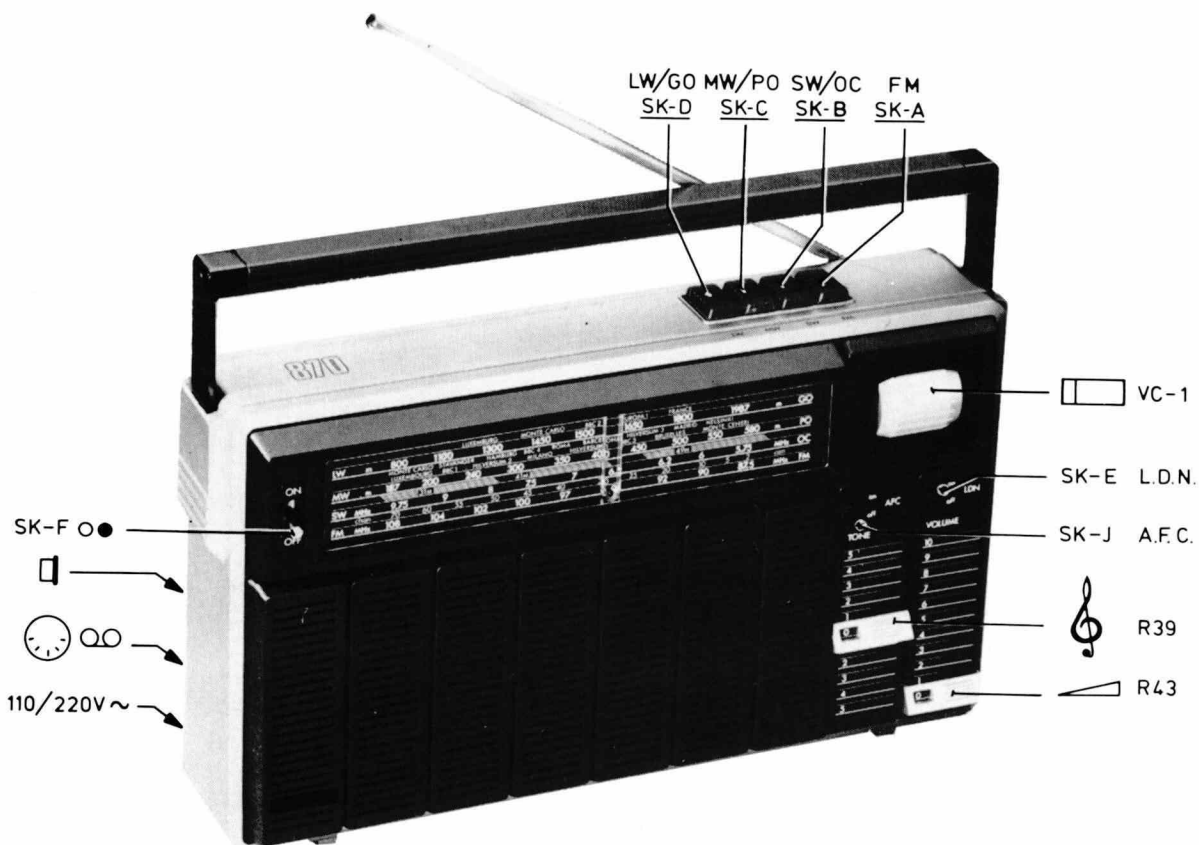


Service
Service
Service

Service Manual



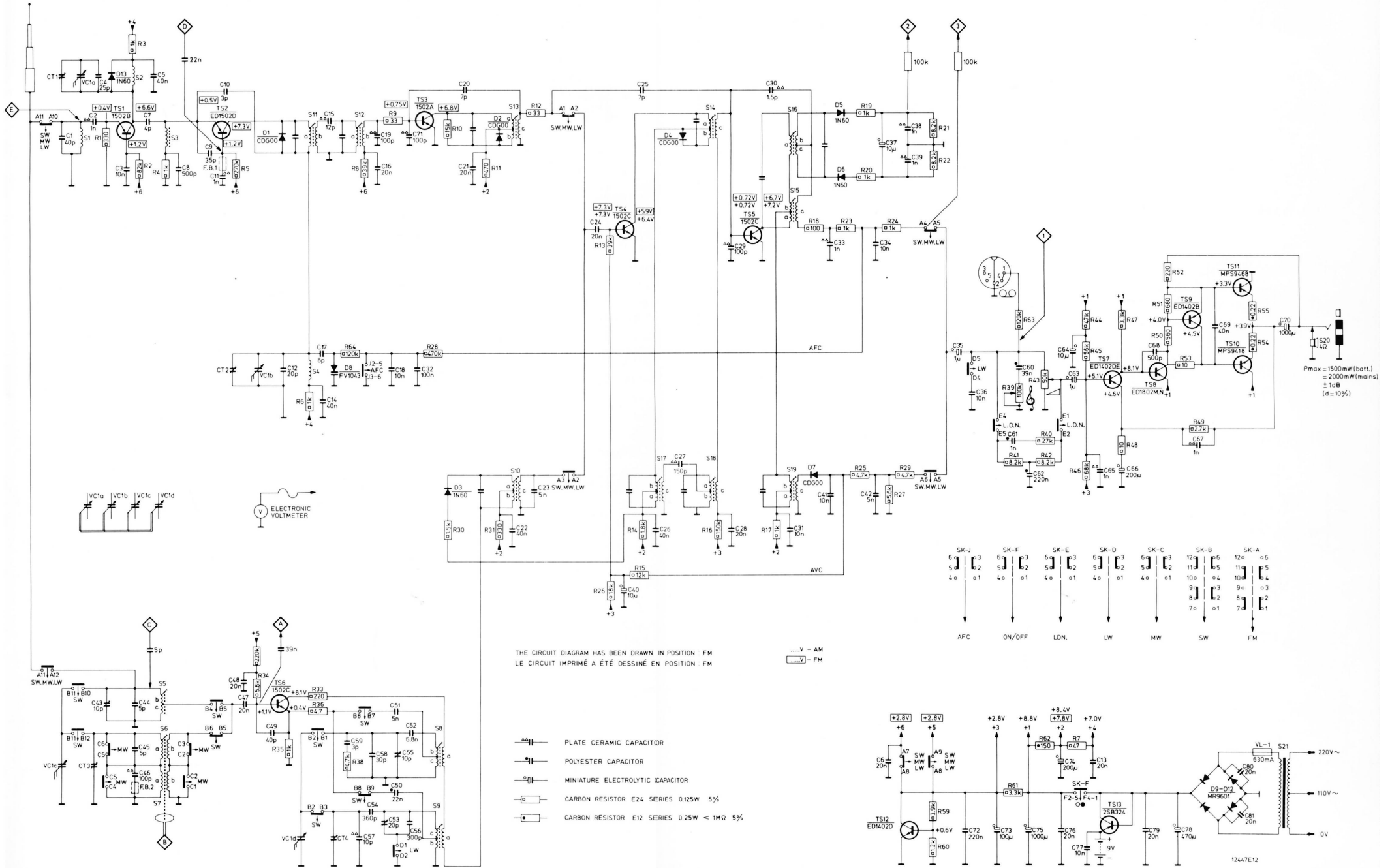
LW/GO : 150 - 255 kHz (2000 - 1177 m)
 MW/PO : 520 - 1605 kHz (577 - 187 m)
 SW/OC : 5.95 - 15.45 MHz (50.4 - 19.4 m)
 FM : 87.5 - 104 MHz
 SUPPLY/SECTEUR : --- 9V (6xR20)
 110/220V ~

IF-AM = 468 kHz
 IF-FM = 10.7 MHz
 OUTPUT/SORTIE = 1500 mW (d=10%) ± 1dB (BATT./PILES)
 2000 mW (d=10%) ± 1dB (MAINS/SECTEUR)

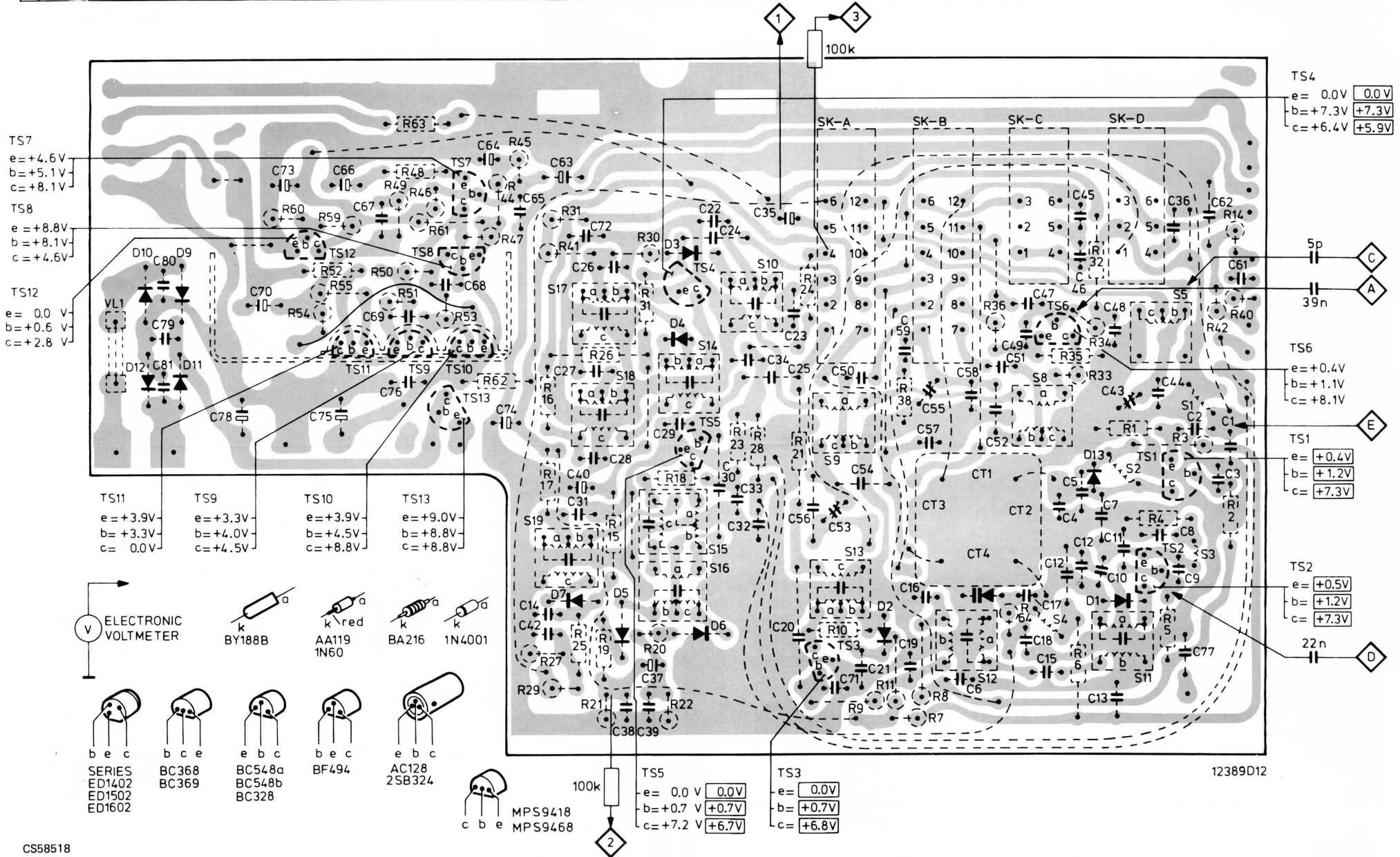
12259B12/A



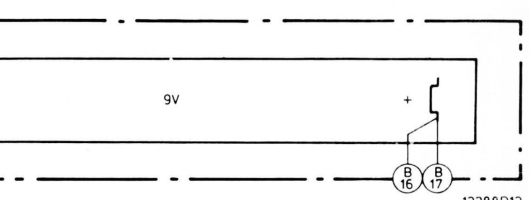
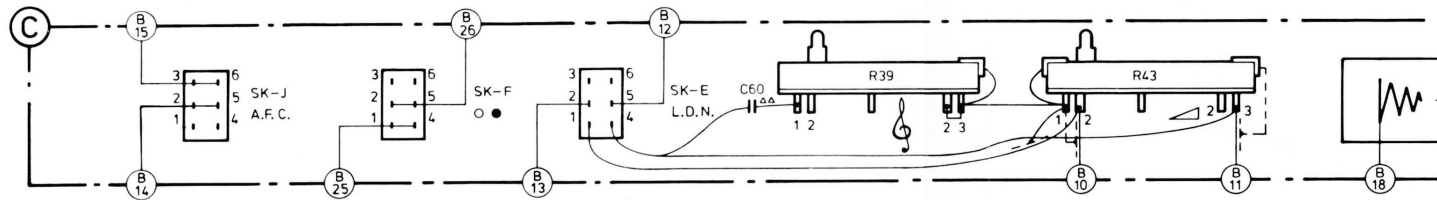
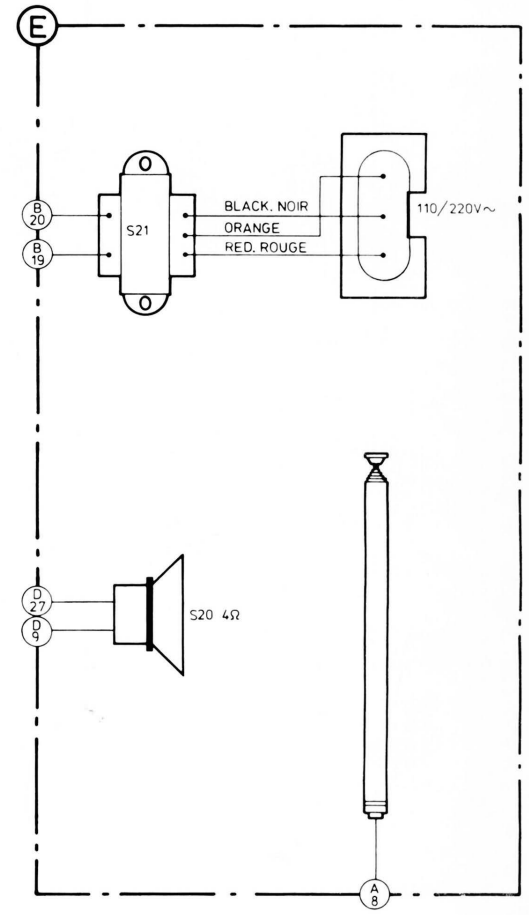
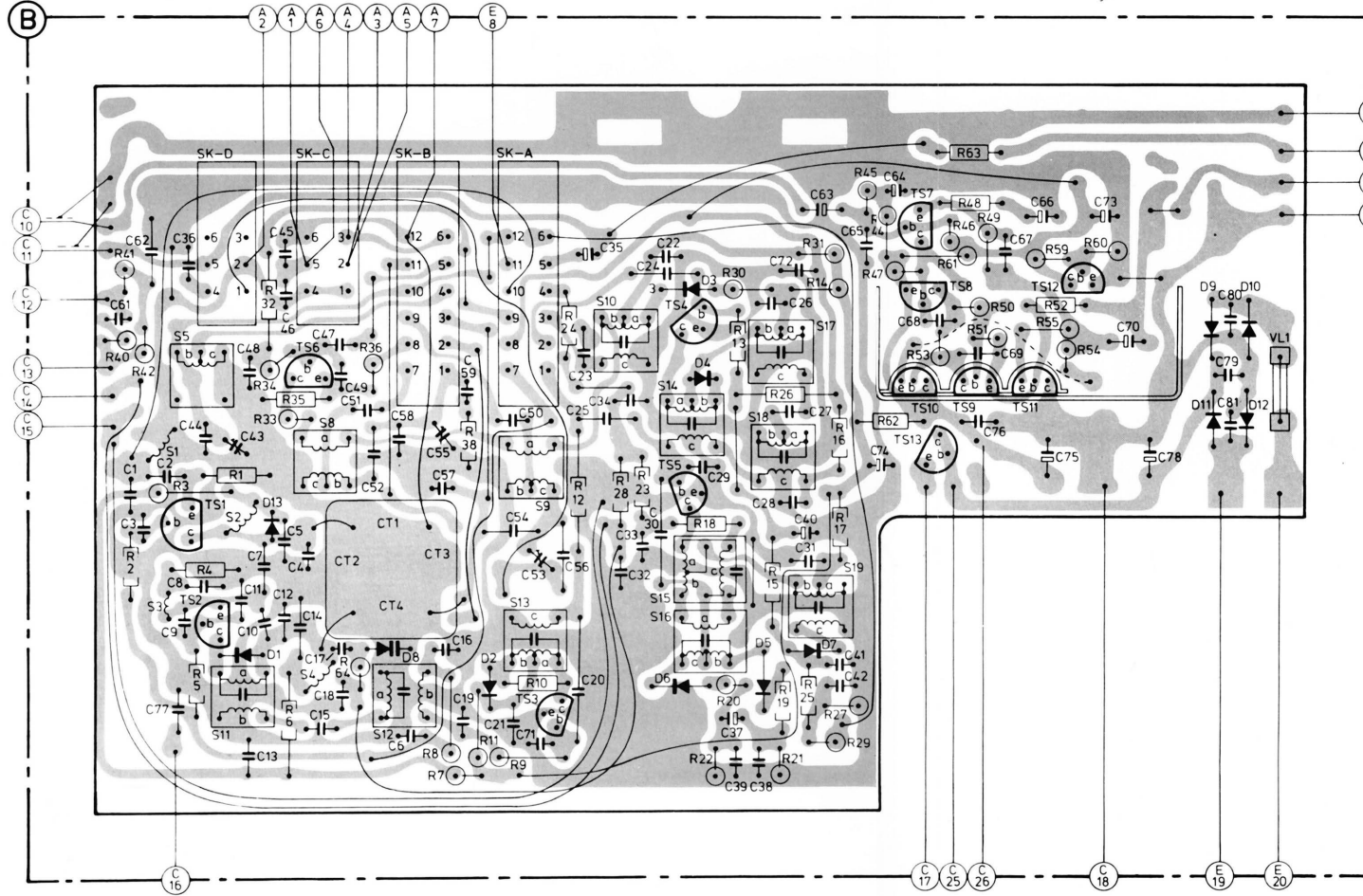
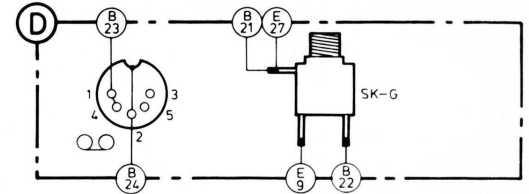
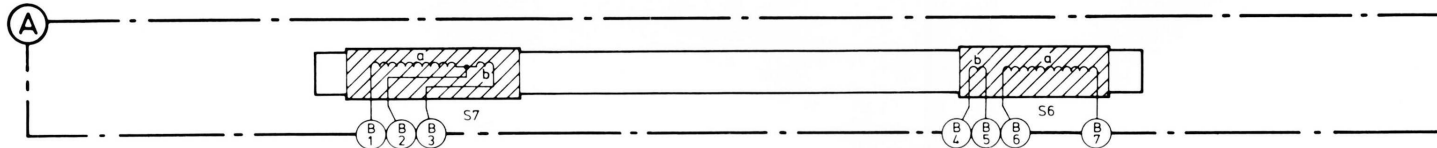
MISC	1	D13 TS1 FB.2	FB.1 TS2	D1 TS6	11.4	D8	TS3	D3	D2	TS4	D4	TS5	D7	D5.6	TS12	TS7.13	TS8	TS9	D9...12	TS10.11	21	MISC								
S		2	5,6,7,3			12	8,9		13,10		17	16,15,19										20	S							
C	VC1c	ET1 CT3.1 VC1a,2...4.3	7.44...4.6.5	8	9...11 CT2	4.8.47 VC1b	4.9 VC1d.12	17.14.15 CT4	50...59.19.16.18	71	32	20.21	22	23	24	40 25	26 27	28	29 28 30	31	41 33	42.6.34.37 38 39	35 72 36	73.60...62.75	64.76.63.74.77.13.65	66 68.70	78 67	69	70	C
R		1	3 2 4		5	34.32.35	6	33.36	64.38.8	9	28	10.30	31.11	12	26.13	14.15		16	17	18	23.19.25.20	24.27.29	60.21.22.59	61.63.39...43.62	46.7.44.45	47.48	51.50	52 53 49	55.54	R



MISC.	VL1	D9...12	TS12 TS11	TS9	TS13	TS10	TS8	TS7	D7	D3...5	TS5	TS4	D6	TS3	SK-A	D2	SK-B	D8	SK-C	TS6	D13	SK-D	D1	TS2	TS1	MISC											
S									19	18	17	16	15	14	10	13	9	12	8	4	2	11	5	3	1	S											
C	1...27								27	26		24	22	25	23	20	21	19	16	6	18	17	15	4	5	12	10	7	13	11	9	8	2	3	1	1...27	
	28...54								42	41	31	40	28	38	39	37	29	30	33	34	32	35	53	54	50	52	51	49	47	46	45	48	43	44	36	28...54	
	55...81	81	80	79	78	70	73	75	66	67	76	69	68	64	74	65	63	72																		55...81	
R	1...32								29	27	17	16	14	31	25	21	19	26	15	13	30	20	22	18	23	28	21	24	10	9	11	7	8				1...32
	33...64								60	55	52	59	51	50	49	48	63	61	46	53	47	62	44	45	38	36	64	35	33	34						33...64	

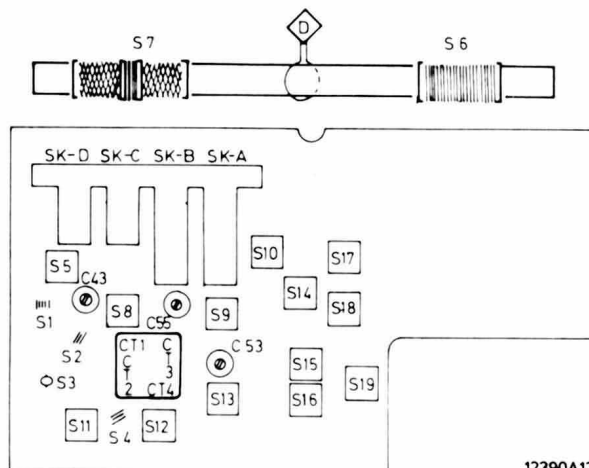


MISC	SK-J	TS1	TS2	D1	SK-D	D13	TS6,SK-C	D8	SK-B	SK-F	D2	SK-A	TS3	SK-E	D6	TS4,TS5,D3	5	D7	TS7	TS8	TS10,TS13	TS9	TS11	D9...12	VL1	SK-G	MISC							
S		1,3	5	11	2		4	8		12	7		9	13		10	14	15	16		17	18	19		6b	6a		21	20		S			
1...27		1	3	2	8	9	11	13	7	10	12	5	14	4	15	17	18	6	16	19		21									1...27			
C 28...54			36	44	43	48	45	46		47	49	51	52			50	54	53		35	32	34	33	30	29	37	39	38	28	40	31	41	42	28...54
55...81		61	62	77																													55...81	
1...32		2	3	4	5	1		32	6																								1...32	
R 33...64		41	40	42			34	33	35			64	36			38																	33...64	



Wave range	Signal to		Var.cap.	Detune	Adjust	Indication
SK A-D						
MW (520-1605 kHz)	1 via 39 nF	A	Min.cap.	S10,S17 S18,S19	S19 S18 S17 S10	1 max.
	512 kHz	B	Max.cap.		S9	
	1635 kHz		Min.cap.		CT4	
	555 kHz		Tune in		S6	
	1400 kHz		CT3			
LW (150-260 kHz)	147 kHz	B	Max. cap.		C53	1 max.
	200 kHz		Tune in		S7	
SW (5.95-15.45 MHz)	5.8 MHz	C via 5 pF	Max.cap.		S8	1 max. 2
	16 MHz		Min.cap.		C55	
	6.2 MHz		S5			
	15 MHz		C43			
FM (87.5-104 MHz)	10.7 MHz via 22 nF	D via 22 nF	Min.cap.	S12,S13 S14,S15	S15	2 3 3 4
	E				S14	
					S13	
					S11	
		S16				
	86.5 MHz	E	Max.cap.		S4	1 max.
	105 MHz		Min.cap.		CT2	
	90 MHz		Tune in		S2	
103 MHz	CT1					

↕ Repeat - Herhalen - Répéter - Wiederholen - Repetera - Ricominciare - Gjentage - Gjentagelse - Toista



S 61 651

12390A12