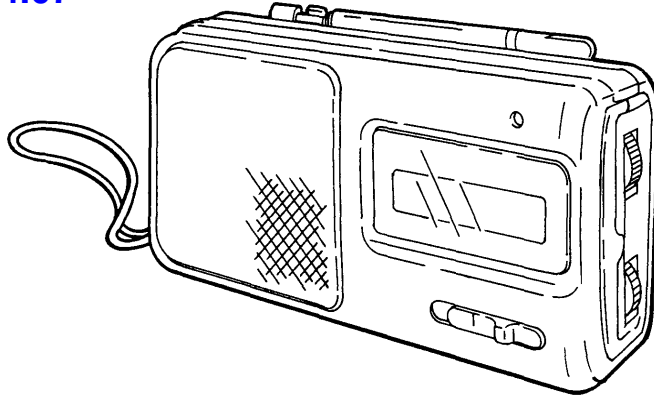


ICF-390

SERVICE MANUAL

Ver 1.1 2004.07

Canadian Model
AEP Model
UK Model



ICF-390 is almost same as ICF-380.
This manual contains only the points which differ from ICF-380.
Please refer to ICF-380 service manual (9-956-577-000) for the information not contained in this manual.

SPECIFICATIONS

Frèquency range

	Frèquency range	
	FM	AM
AEP, UK model	87.6 – 107.5MHz	531 – 1,602kHz
Canadian model	87.6 – 108MHz	530 – 1,710kHz
East European model	65 – 108MHz	531 – 1,602kHz

Intermediate frequency

FM: 10.7 MHz

AM: 455 kHz

Speaker

Approx. 6.6 cm dia.

Power output

100 mW (at 10 % harmonic distortion)

Output

Ⓞ jack (minijack)

Power requirements

3 V DC, two R6 (size AA) batteries

3 V DC, two LR6 (size AA) batteries

Dimensions

Approx. 158 × 81.5 × 37.5 mm (w/h/d)

incl. projecting parts and controls

Mass

Approx. 260 g incl. batteries

Design and specifications are subject to change without notice.

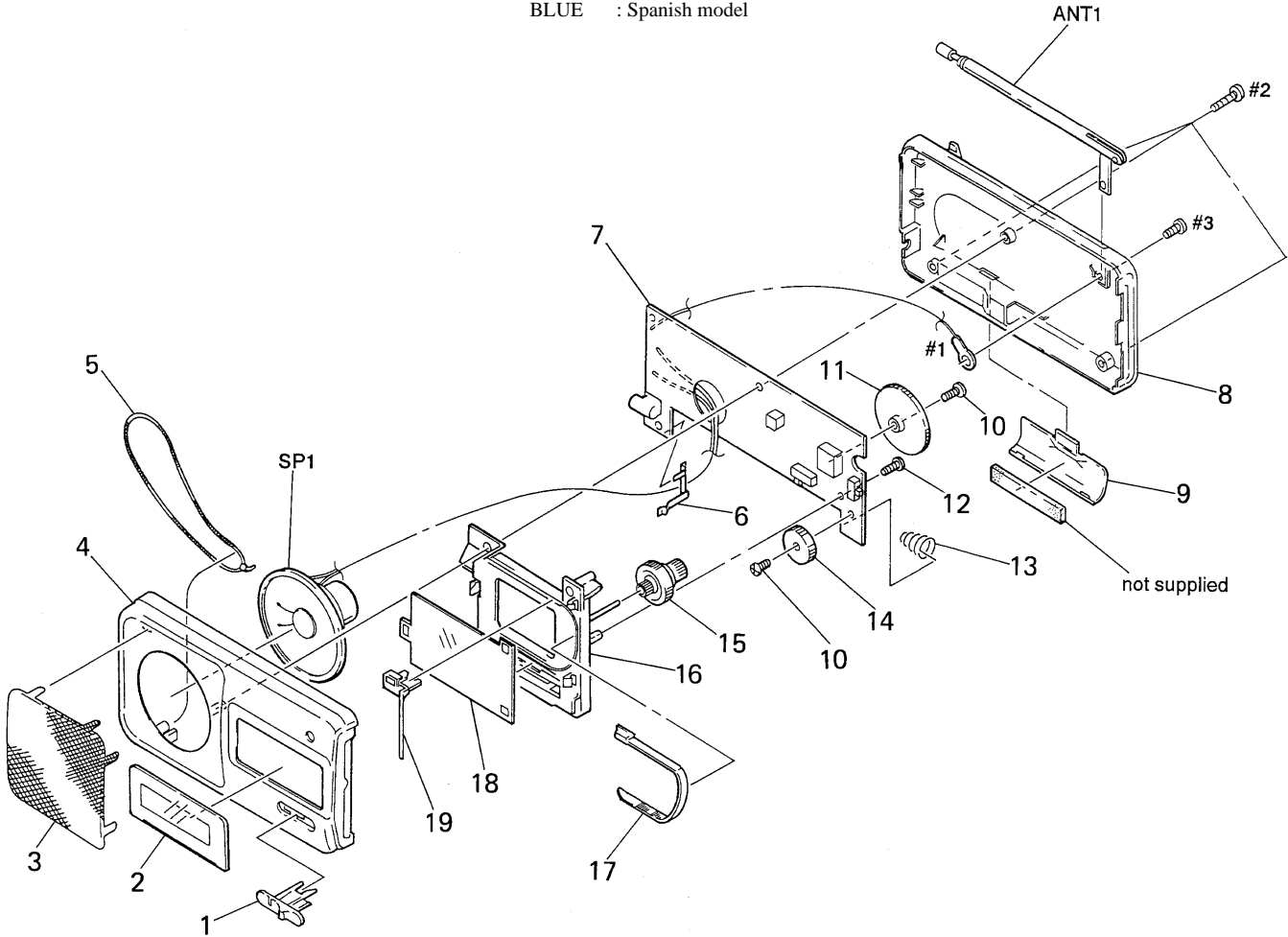
FM/AM RECEIVER

NOTE:

- -XX and -X mean standardized parts, so they may have some difference from the original one.
- Color Indication of Appearance Parts
Example:
KNOB, BALANCE (WHITE) . . . (RED)
 ↑ ↑
 Parts Color Cabinet's Color

- Items marked “*” are not stocked since they are seldom required for routine service. Some delay should be anticipated when ordering these items.
- The mechanical parts with no reference number in the exploded views are not supplied.
- Accessories are given in the last of the electrical parts list.
- Color variation
BLACK : Canadian, AEP, UK, Italian, East European models
WHITE : Canadian, AEP, UK, Italian models
BLUE : Spanish model

- Abbreviation
CND : Canadian model
IT : Italian model
EE : East European model



Ref. No.	Part No.	Description	Remark
1	3-922-972-01	KNOB (BAND) (for BLACK, BLUE)	
1	3-922-972-11	KNOB (BAND) (WHITE)	
2	3-922-971-01	SCALE, DIAL (CND, AEP, UK, IT)	
2	3-922-971-11	SCALE, DIAL (EE)	
3	3-922-974-01	NET, SPEAKER (for BLACK, BLUE)	
3	3-922-974-11	NET, SPEAKER (WHITE)	
4	3-922-969-01	CABINET (FRONT) (BLACK)	
4	3-922-969-11	CABINET (FRONT) (WHITE)	
4	3-922-969-41	CABINET (FRONT) (BLUE)	
5	3-893-381-01	STRAP, HAND	
6	3-369-157-01	PLATE, CONTACT, BATTERY	
* 7	A-3662-195-A	(HAND), MAIN BOARD, COMPLETE	(CND, AEP, UK)
* 7	A-3662-196-A	(HAND), MAIN BOARD, COMPLETE (IT)	
* 7	A-3662-197-A	(HAND), MAIN BOARD, COMPLETE (EE)	
8	3-922-970-01	CABINET (REAR) (BLACK) (AEP, UK, IT, EE)	
8	3-922-970-11	CABINET (REAR) (WHITE) (AEP, UK, IT)	
8	3-922-970-21	CABINET (REAR) (BLACK) (CND)	
8	3-922-970-31	CABINET (REAR) (WHITE) (CND)	

Ref. No.	Part No.	Description	Remark
8	3-922-970-41	CABINET (REAR) (BLUE)	
9	3-369-161-01	LID, BATTERY CASE (BLACK)	
9	3-369-161-11	LID, BATTERY CASE (WHITE)	
9	3-369-161-41	LID, BATTERY CASE (BLUE)	
10	3-880-990-03	SCREW (1.7X3), FLAT, (+) SPECIAL	
11	3-369-171-01	GEAR (TUNING CAPACITOR)	
12	3-371-765-21	SCREW (2X8), +BTP	
13	3-369-164-01	SPRING, BATTERY	
14	3-369-173-01	KNOB (VOL) (for BLACK, BLUE)	
14	3-369-173-11	KNOB (VOL) (WHITE)	
15	3-369-172-01	KNOB (TUNE) (for BLACK, BLUE)	
15	3-369-172-11	KNOB (TUNE) (WHITE)	
* 16	3-369-185-01	CHASSIS	
17	3-369-170-01	RACK	
* 18	3-369-165-13	PLATE, BACK	
19	3-922-973-01	POINTER	
ANT1	1-501-247-61	ANTENNA, TELESCOPIC	
SP1	1-504-748-21	SPEAKER (6.6cm)	

2. DIFFERENCE ELECTRICAL PARTS LIST

NOTE:

- Items marked "*" are not stocked since they are seldom required for routine service. Some delay should be anticipated when ordering these items.
- Abbreviation
 IT : Italian
 EA : Saudi Arabia
 G : German
 EE : East European
 AE7 : Spanish

Page	Ref. No.	ICF-380	ICF-390
		<u>Part No.</u> <u>Description</u>	<u>Part No.</u> <u>Description</u>
		* A-3661-293-A MAIN BOARD (CHIP), COMPLETE (AE7, UK, E)	* A-3662-195-A MAIN BOARD (HAND), COMPLETE (Canadian, AEP, UK)
		* A-3661-445-A MAIN BOARD (CHIP), COMPLETE (US, Canadian)	
		* A-3661-326-A MAIN BOARD (CHIP), COMPLETE (G, IT, EA)	* A-3662-196-A MAIN BOARD (HAND), COMPLETE (IT)
		* A-3661-885-A MAIN BOARD (CHIP), COMPLETE (EE)	* A-3662-197-A MAIN BOARD (HAND), COMPLETE (EE)
	BPF1	1-236-839-11 FILTER, BAND PASS (Except for EE)	
	C2	1-163-101-00 CERAMIC CHIP 22PF 5% 50V (US, Canadian)	1-163-103-00 CERAMIC CHIP 27PF 5% 50V (Canadian, AEP, UK, IT)
		1-163-103-00 CERAMIC CHIP 27PF 5% 50V (AEP, G, IT, E, EA)	
	C3	1-163-103-00 CERAMIC CHIP 27PF 5% 50V (US, Canadian)	1-163-104-00 CERAMIC CHIP 30PF 5% 50V (Canadian, AEP, UK, IT)
10	C4	1-163-089-00 CERAMIC CHIP 6PF 5% 50V (US, Canadian)	1-163-091-00 CERAMIC CHIP 8PF 50V (Canadian, AEP, UK, IT)
	C7	1-163-031-00 CERAMIC CHIP 0.01 μ F 50V	
	C10	1-163-117-00 CERAMIC CHIP 100PF 5% 50V	
	C13	1-163-037-11 CERAMIC CHIP 0.022 μ F 10% 25V	1-164-232-11 CERAMIC CHIP 0.01 μ F 50V
	C14	1-162-637-11 CERAMIC CHIP 0.47 μ F 16V	1-162-638-11 CERAMIC CHIP 1 μ F 16V
	C18, 19	1-163-077-00 CERAMIC CHIP 0.1 μ F 10% 25V	1-162-637-11 CERAMIC CHIP 0.047 μ F 16V
	C20	1-128-057-11 ELECT 330 μ F 20% 6.3V	1-126-941-11 ELECT 470 μ F 20% 6.3V
	C22	1-126-163-11 ELECT 4.7 μ F 20% 50V	
	C25	1-101-881-61 CERAMIC 47PF 20% 50V (EE)	C25 change to C26
	C26		1-102-973-00 CERAMIC 100PF 5% 50V (Canadian, AEP, UK, IT)
			1-101-880-00 CERAMIC 47PF 5% 50V (EE)
	CV1	1-151-641-11 CAP, VARIABLE (TUNING) (US, Canadian)	1-151-659-11 CAP, VARIABLE (TUNING) (Canadian, AEP, UK, IT)
	D1	8-719-800-76 DIODE 1SS226	
	L1	1-402-566-21 ANTENNA, FERRITE-ROD (MW) (US, Canadian)	1-402-566-11 ANTENNA, FERRITE-ROD (MW) (Canadian, AEP, UK, IT, EE)
	L2	* 1-428-287-11 COIL, AIR-CORE (US, Canadian)	* 1-422-320-11 COIL, AIR-CORE (Canadian, AEP, UK, IT)
		1-406-922-11 COIL, AIR-CORE (EE)	1-403-614-11 COIL, AIR-CORE (EE)
	L3	1-410-316-11 INDUCTOR 1 μ H	
11	L4	1-422-294-11 COIL, AIR-CORE (AE7, UK, E)	1-422-294-11 COIL, AIR-CORE (Canadian, AEP, UK, IT)
		* 1-422-342-11 COIL, AIR-CORE (US, Canadian)	
		1-460-018-11 COIL (WITH CORE) (G, IT, EA)	
	R2	1-216-071-00 METAL CHIP 8.2K 5% 1/10W	1-216-073-00 METAL CHIP 10K 5% 1/10W
	R5	1-216-065-00 METAL CHIP 4.7K 5% 1/10W	
	R7	1-216-037-00 METAL CHIP 330 5% 1/10W	1-216-057-00 METAL CHIP 2.2K 5% 1/10W

Page	Ref. No.	ICF-380	ICF-390
ACCESSORIES & PACKING MATERIALS			
11		<u>Part No.</u> <u>Description</u>	<u>Part No.</u> <u>Description</u>
		* 3-369-733-01 INDIVIDUAL CARTON (US, Canadian, E, EA)	* 3-923-482-21 INDIVIDUAL CARTON (Canadian)
		* 3-369-733-21 INDIVIDUAL CARTON (AEP, G, UK, IT, EE)	* 3-923-482-01 INDIVIDUAL CARTON (AEP, IT, UK, EE)
		* 3-370-050-01 CUSHION, CORRUGATED FIBER BOARD	
		3-753-405-11 MANUAL, INSTRUCTION (ENGLISH/GERMAN/FRENCH/ITALIAN/DUTCH)	3-798-666-11 MANUAL, INSTRUCTION (ENGLISH/FRENCH/SPANISH/ARABIC) (Canadian)
		3-753-405-41 MANUAL, INSTRUCTION (ARABIC/SWEDISH/PORTUGUESE) (AE7, UK, EA))	3-798-666-21 MANUAL, INSTRUCTION (ENGLISH/GERMAN/FRENCH/ITALIAN/DUTCH/SPANISH/SWEDISH) (AEP, UK, IT)
	3-753-405-61 MANUAL, INSTRUCTION (ENGLISH/POLISH/MAGYAR/CZECK/RUSSIAN) (EE)	3-798-666-31 MANUAL, INSTRUCTION (ENGLISH/POLISH/MAGYAR/CZECK/RUSSIAN) (EE)	
HARDWARE LIST			
11	#1 #2 #3	_____ _____ _____	7-623-507-01 LUG, 2.6 7-685-534-14 SCREW +BTP 2.6X8 TYPE2 N-S 7-621-772-10 SCREW +B 2X3

MEMO

