

AF 117

AF 117

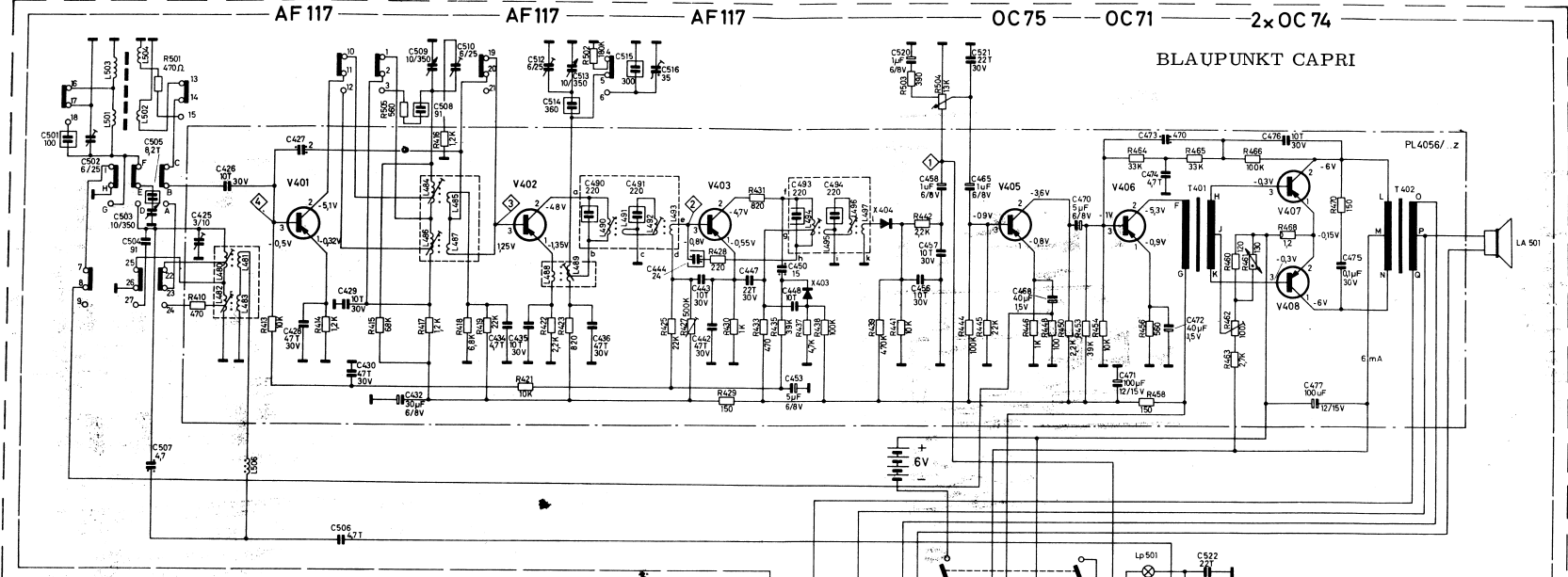
AF 117

OC 75

OC 71

2x OC 74

BLAUPUNKT CAPRI



Schwingspannungen an R422  
Oscillator voltages to R422

Bereich Range	1min.	1m.	1max.	Bereiche	Ranges	ZF	IF
M	150mV	140mV	130mV	519-1640kHz	519-1640 kc	460 kHz	460 kc
L	140mV	120mV	110 mV	150-265 kHz	150-265 kc		

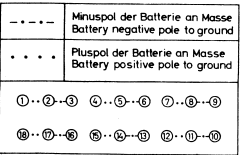
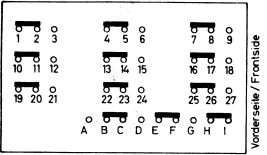
Empfindlichkeiten bezogen auf 50mW an LA501  
Sensitivities for 50 mW to LA501

mit with	a b from	
1 kHz	◇	3 mV
460 kHz	◇	2 mV
460 kHz	◇	25 µV
1 MHz	◇	3 µV
1 MHz	◇	12 µV
200 kHz	◇	6 µV
200 kHz	◇	25 µV

Spannungen gemessen mit Röhrevoltmeter (Ri&10MΩ) ohne Signal  
a) Portabel: gegen + Portabelbatterie 6V  
b) Kassetten: gegen + Wagenbatterie 6,3V (- an Masse)

Voltages measured with VTVM (Ri&10MΩ) without signal  
a) Portabel: against + Portablebattery 6V  
b) Kassetten: against + car battery 6,3V (- to ground)

Schalterdiagramm (Schalter von oben gesehen)  
Switch diagram (Switch seen from above)



+	+	+	12V	Schaltung Connection
---	---	---	6V	Schaltung Connection
①+②-③	④-⑤-⑥	⑦+⑧-⑨		
⑩+⑪-⑫	⑬+⑭-⑮	⑯+⑰-⑱		

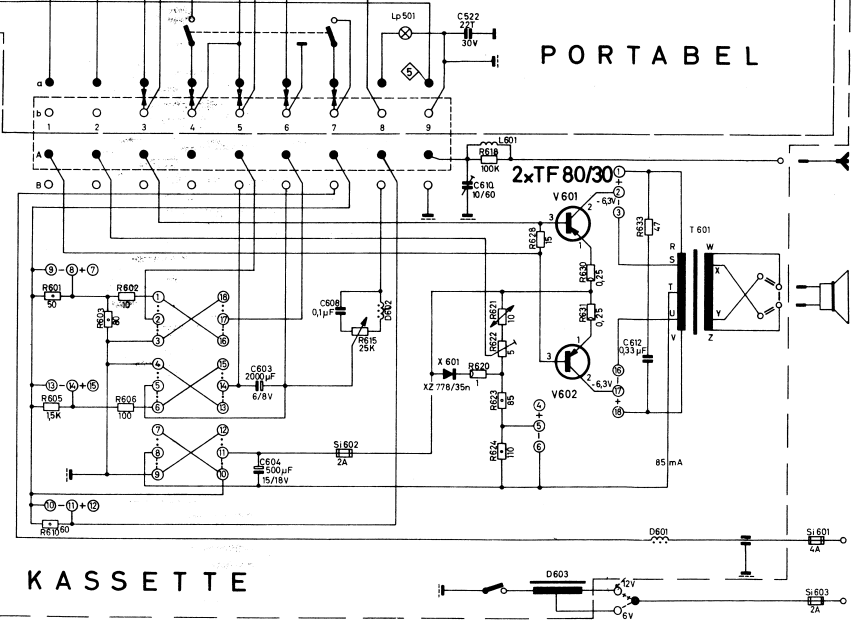
Gez. Stellung: M und Portabelempfang  
Shown in position: M and portable reception

125V 250V 400V 500V =25%  
Betriebsspannung der Kondensatoren Drahttrimmer  
DC working voltage Wire wound trimmer

1/8W 1/2W 1W 2W  
Belastbarkeit der Widerstände  
Rating

0,001µF=1T=1nF=1000µµF  
Änderungen vorbehalten!  
Modifications reserved!

PORTABEL



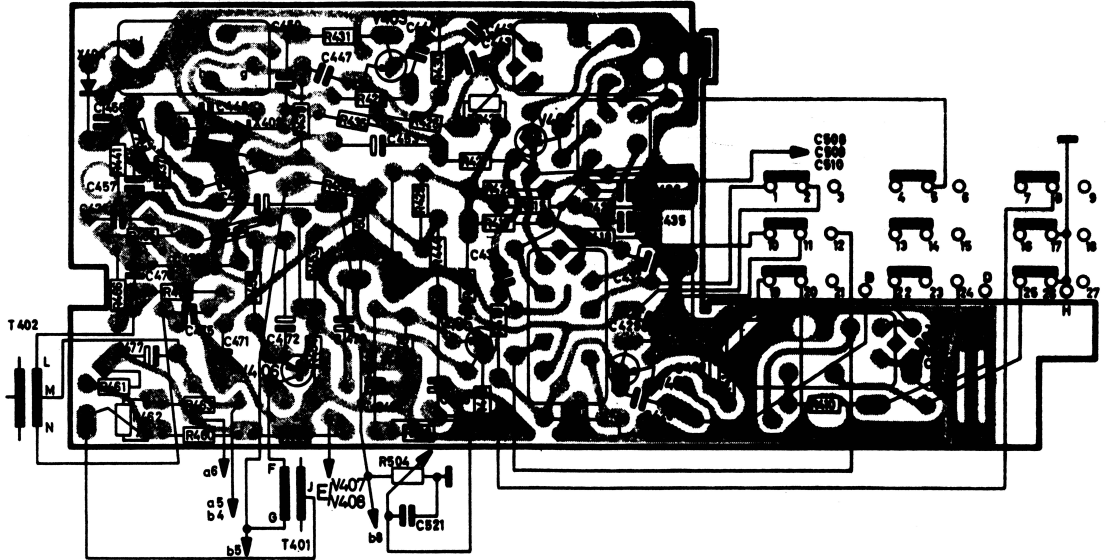
KASSETTE

M30.

**Printed circuit board  
(Portable)**

M30.

Movable leads from circuit board, which carry on to circuit elements outside of printed board scheme, are drawn in according to circuit diagram (see VII 1/41).



**Fig. 26**  
**Bestückungsseite**  
**Components side**

BLAUPUNKT CAPRI

