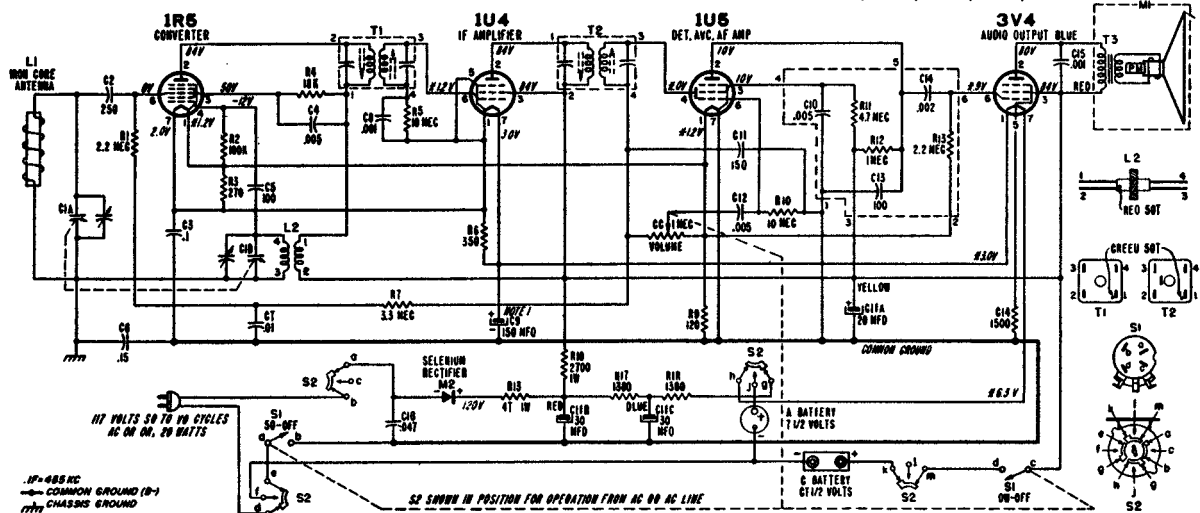


MANUAL OF 1954 MOST-OFTEN-NEEDED RADIO DIAGRAMS

Admiral

CHASSIS 4B2

MODELS 4B21, 4B22, 4B24, 4B28, 4B29



NOTE 1: C10 MAY BE PART OF C11. IF C11 IS SEPARATE, THE 100 MFD SECTION OF C11 (GREEN LEAD) MUST BE CONNECTED TO COMMON GROUND

VOLTAGE DATA

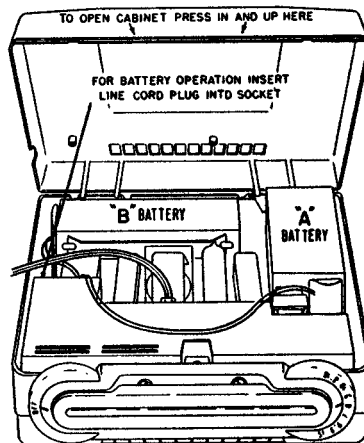
Voltages shown on schematic diagram.

All readings made between tube socket terminals and B minus (terminal of On-Off switch).

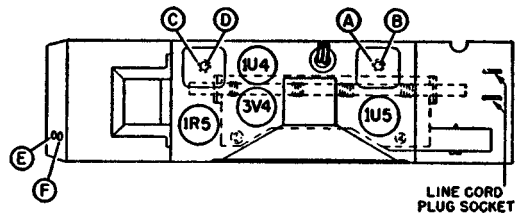
Measured on 117 Volt AC line.

Volume control minimum; dial set at low frequency end.

Voltages measured with vacuum-tube voltmeter.



Disconnect the AC line cord from the wall outlet. Squeeze the handle support springs together near the escutcheon to remove the plastic handle. Remove the two escutcheon mounting screws. Remove the "Off-Volume" and "Tuning" knobs. Now open the cabinet (see illustration at left). Loosen the speaker mounting clips, rotate them away from the speaker, and carefully lift the chassis and batteries out of the cabinet.



ALIGNMENT PROCEDURE

- Turn receiver volume control full on (fully clockwise).
- Use an isolation transformer if available; otherwise, connect a .1 mfd. capacitor in series with low side of signal generator and connect to chassis.
Caution: Do not connect a ground wire directly to chassis.
- Connect output meter across speaker voice coil.
- Use lowest output of signal generator required for midscale meter indication and proceed in the following sequence.
- Repeat adjustments to insure good results.

Step	Dummy Antenna in Series with Signal Generator	Connection of Signal Generator (High Side)	Signal Generator Frequency	Receiver Gang Setting	Trimmer Description	Trimmer Designation	Type of Adjustment
1	.1 mfd. capacitor	Antenna stator of tuning capacitor	455 KC	Gang fully open	2nd IF 1st IF	*A, B, *C, D	Maximum output
2	.1 mfd. capacitor	Antenna stator of tuning capacitor	1620 KC	Gang fully open	Oscillator	E	Maximum output
Set tuning pointer with tuning gang tuned to 1400 KC generator signal; see illustration below.							
3	Loop of several turns of wire, or place generator lead close to receiver loop for adequate signal pickup.	No actual connection (signal by radiation)	1400 KC	Tune in generator signal	Antenna	F	Maximum output

*Adjustments A and C made from the underside of the chassis. Use an alignment tool with a blade 3/32" wide.