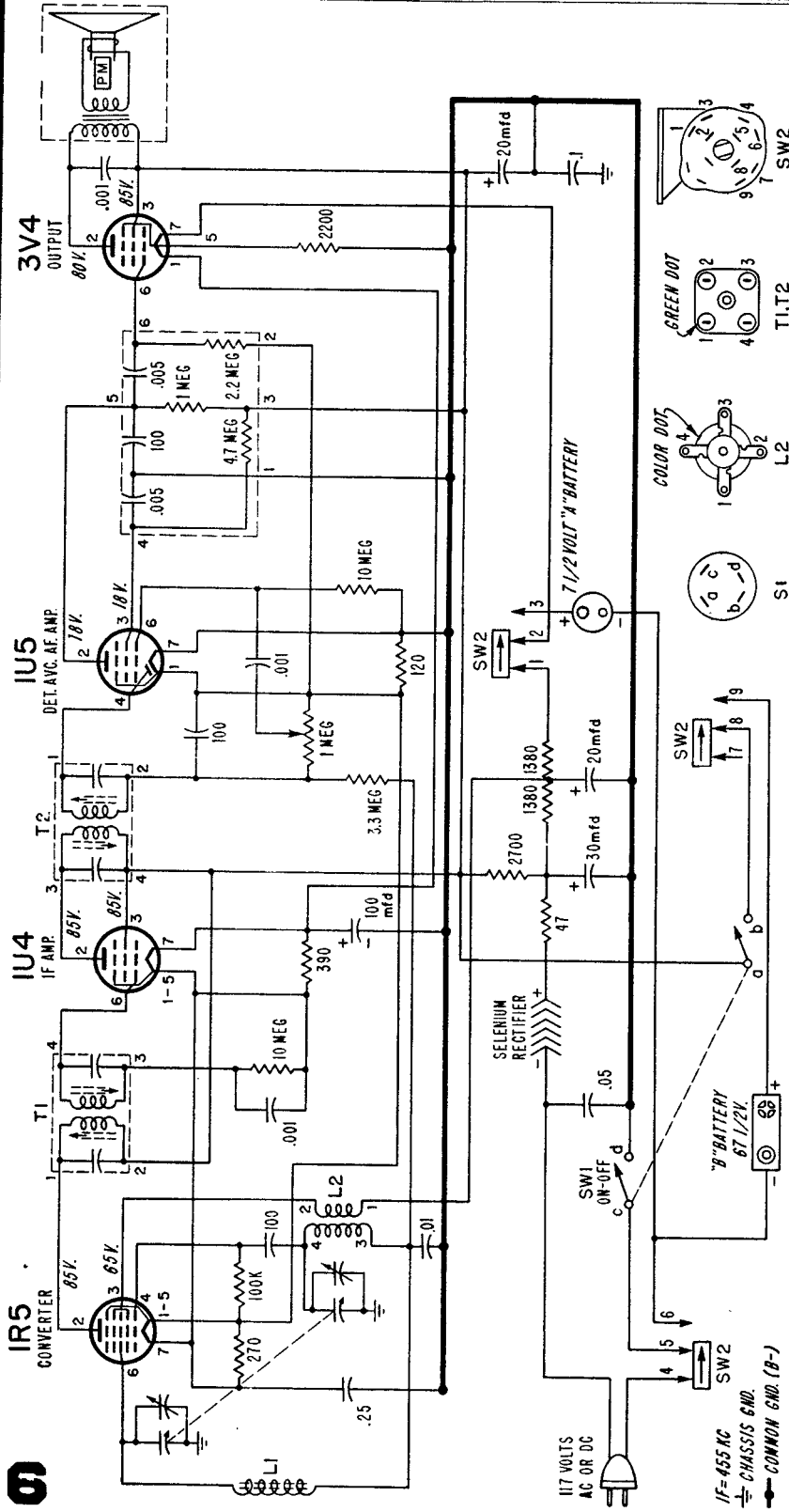


MANUAL OF 1950 MOST-OFTEN-NEEDED RADIO DIAGRAMS

Admiral

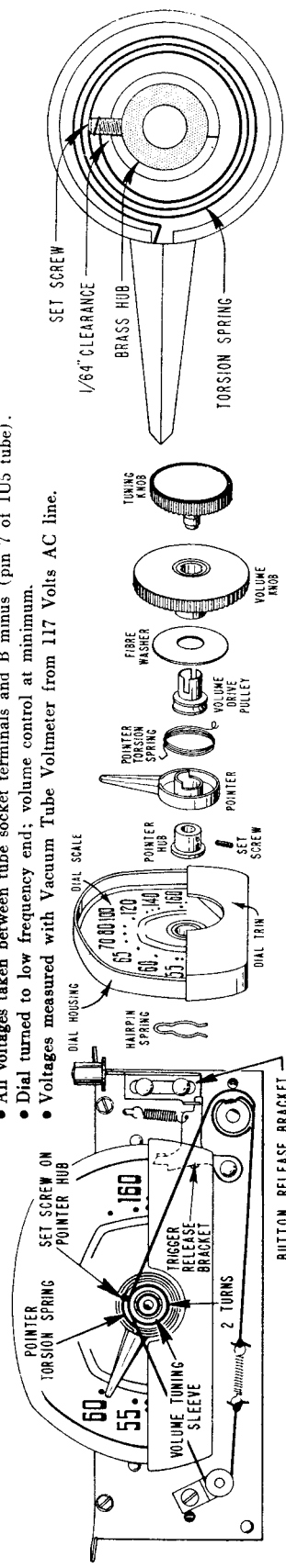
CHASSIS 4R1
MODELS 4R11, 4R12



SW2 SHOWN IN POSITION FOR OPERATION FROM POWER LINE

VOLTAGE DATA

- All voltages taken between tube socket terminals and B minus (pin 7 of IU5 tube).
- Dial turned to low frequency end; volume control at minimum.
- Voltages measured with Vacuum Tube Voltmeter from 117 Volts AC line.



Dial Pointer and Hub Assembly

Dial and Tuning Knob Assembly, Exploded View

"Hide-A-Way" Dial, Front View (late set)