

Service Document **Exchange Set**

Ocean Boy 70 RP 5300 PLL

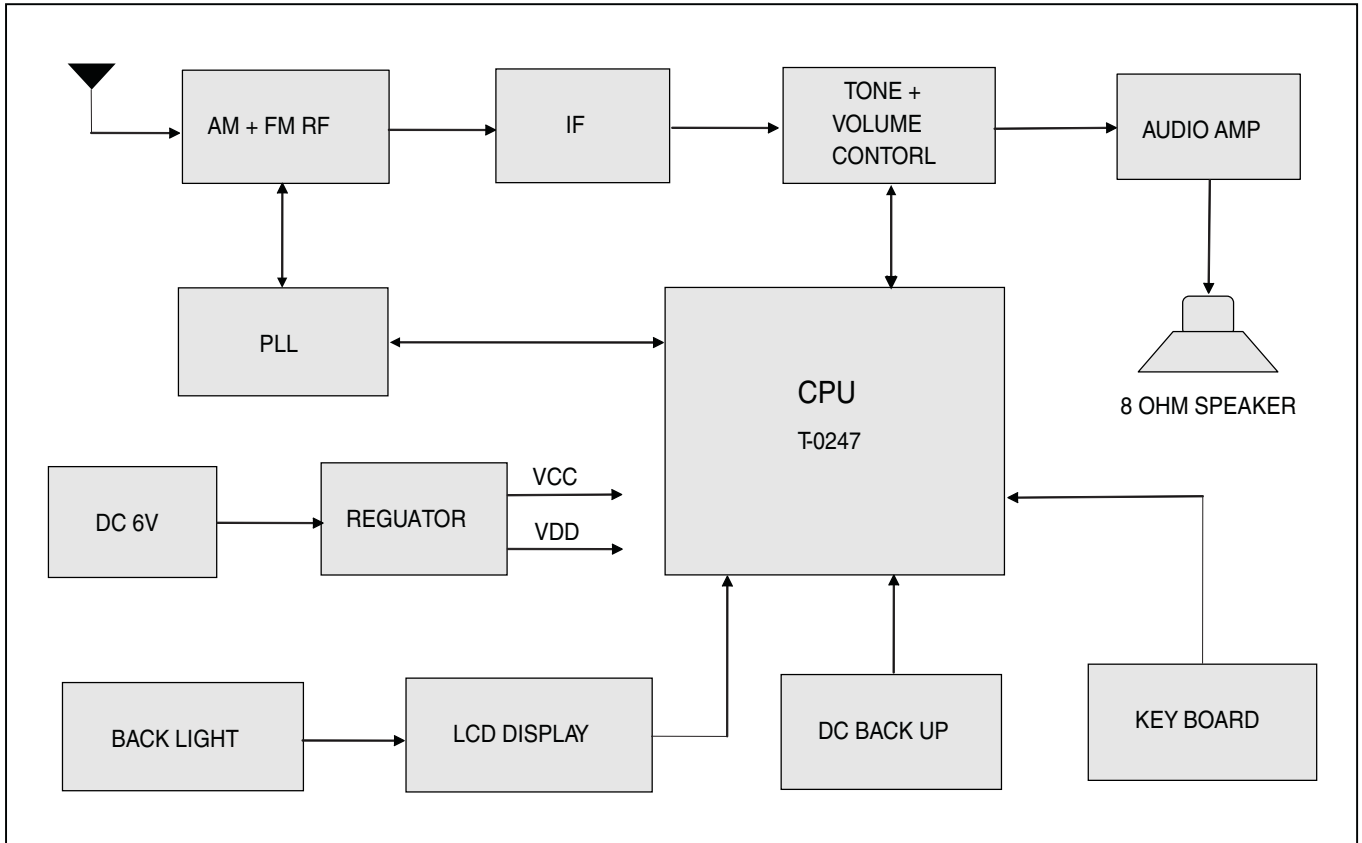
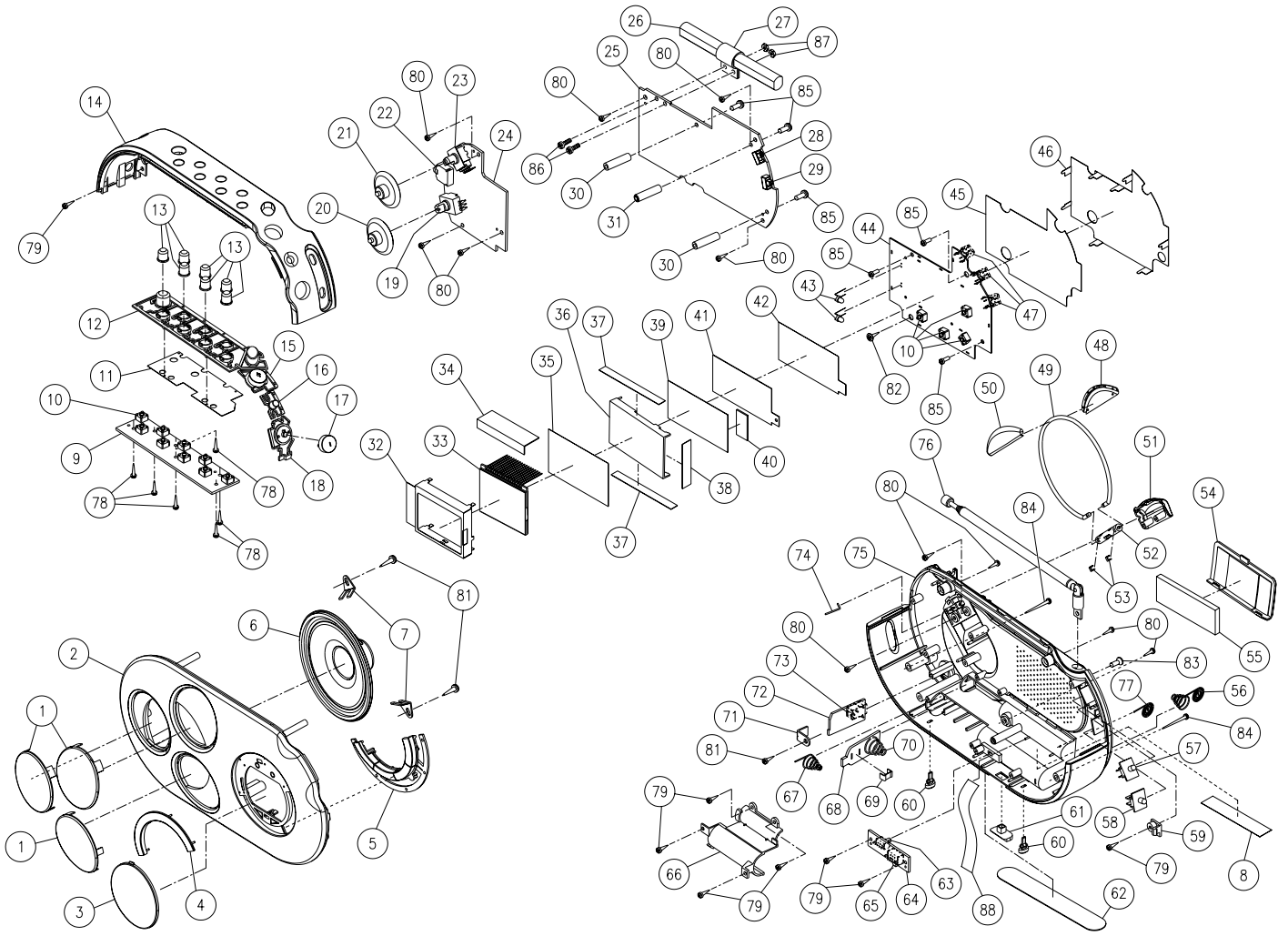
Service Manual
Sicherheit
Safety
Materialnr./Part No. 720108000000

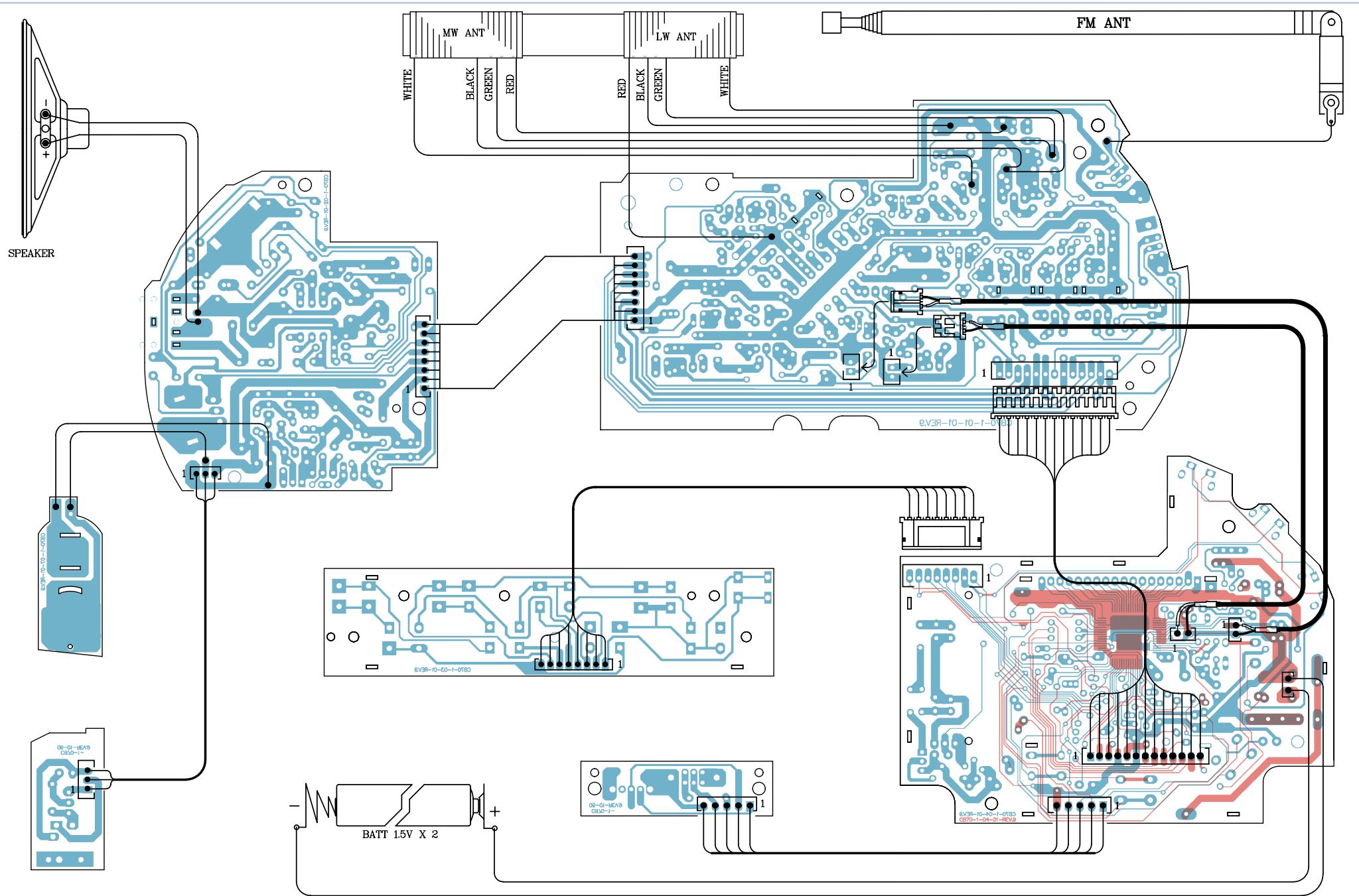


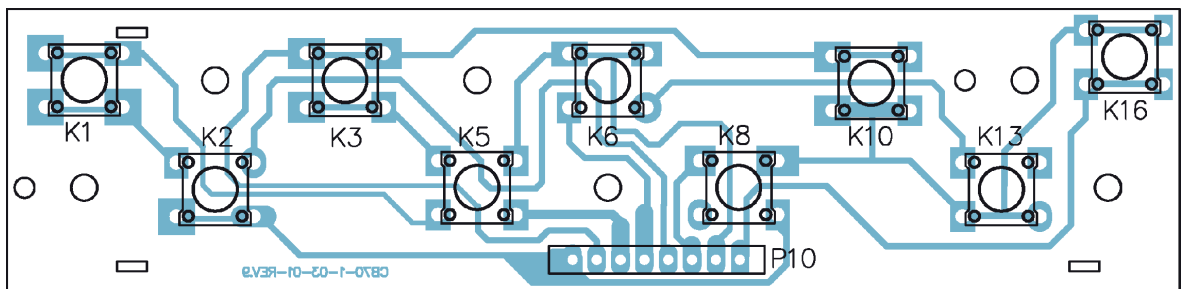
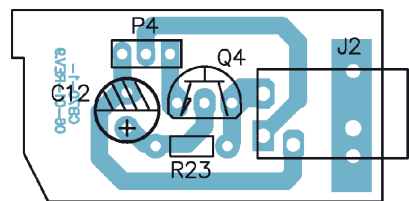
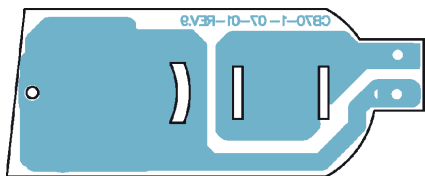
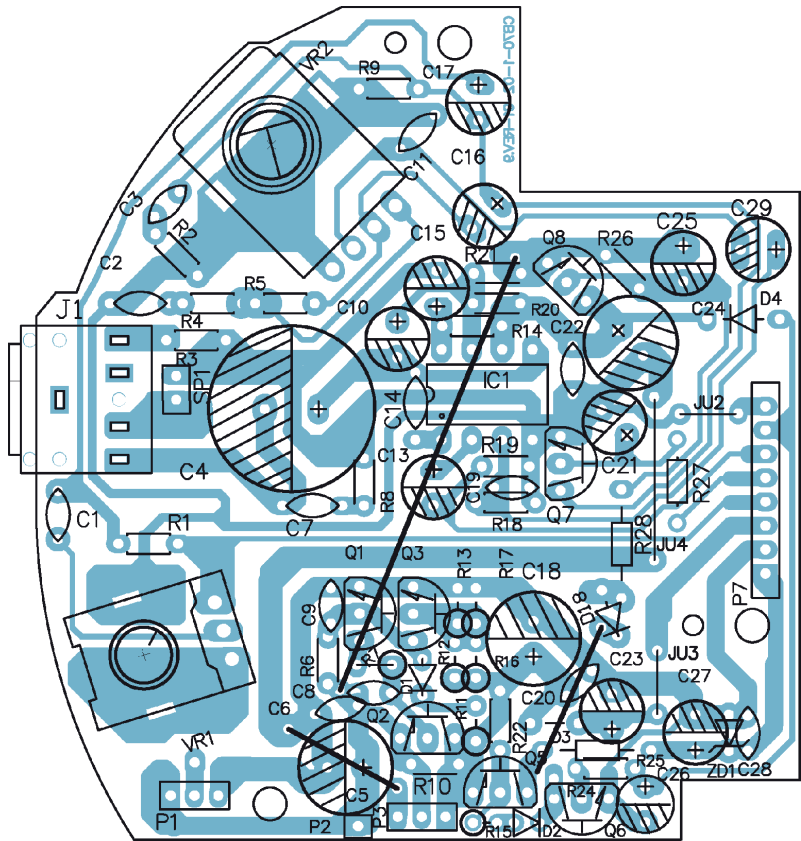
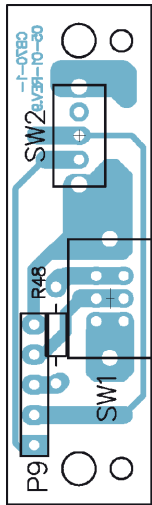
Es gelten die Vorschriften und Sicherheitshinweise gemäß dem Service Manual "Sicherheit", Materialnummer 720108000000, sowie zusätzlich die eventuell abweichenden, landesspezifischen Vorschriften!

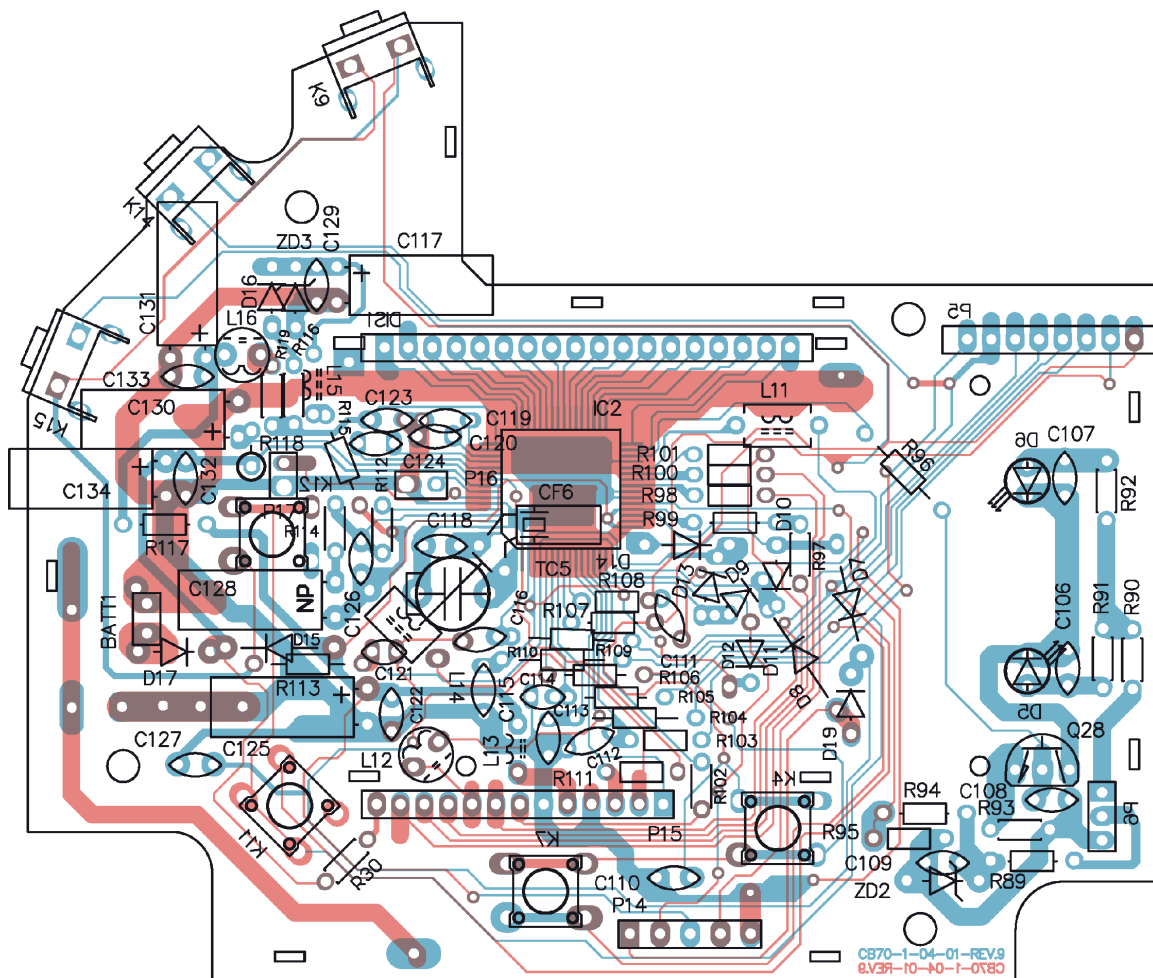
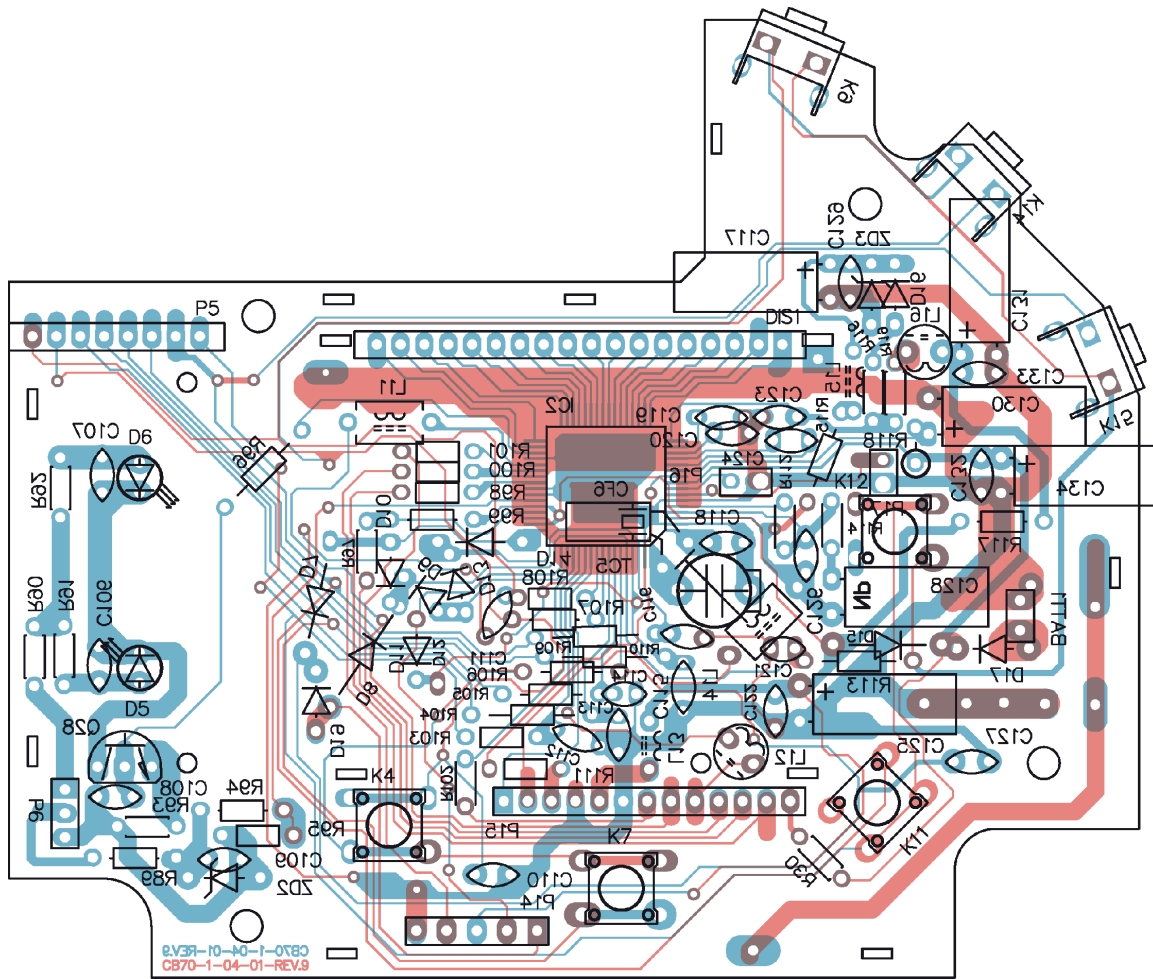


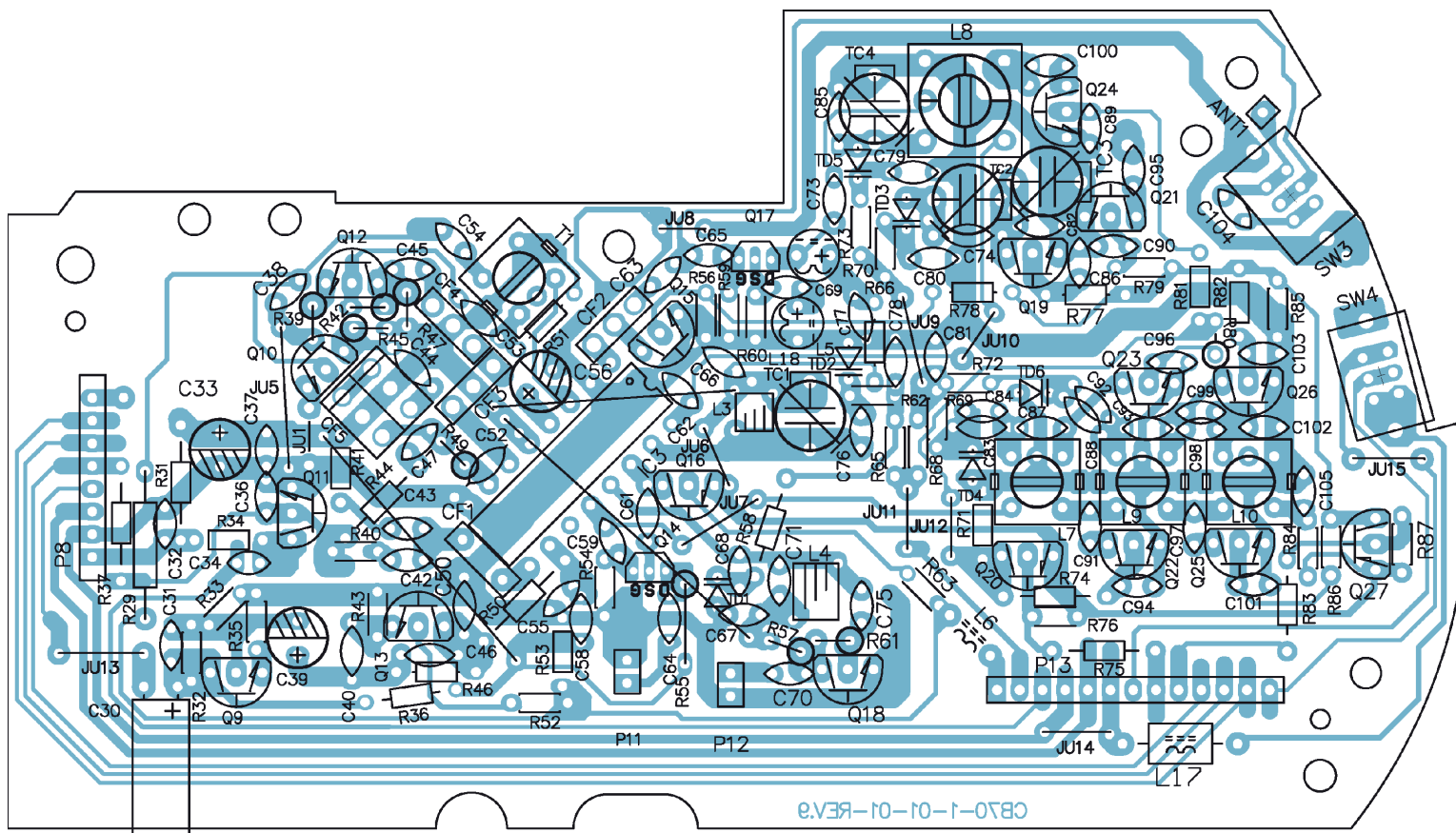
The regulations and safety instructions shall be valid as provided by the "Safety" Service Manual, part number 720108000000, as well as the respective national deviations.

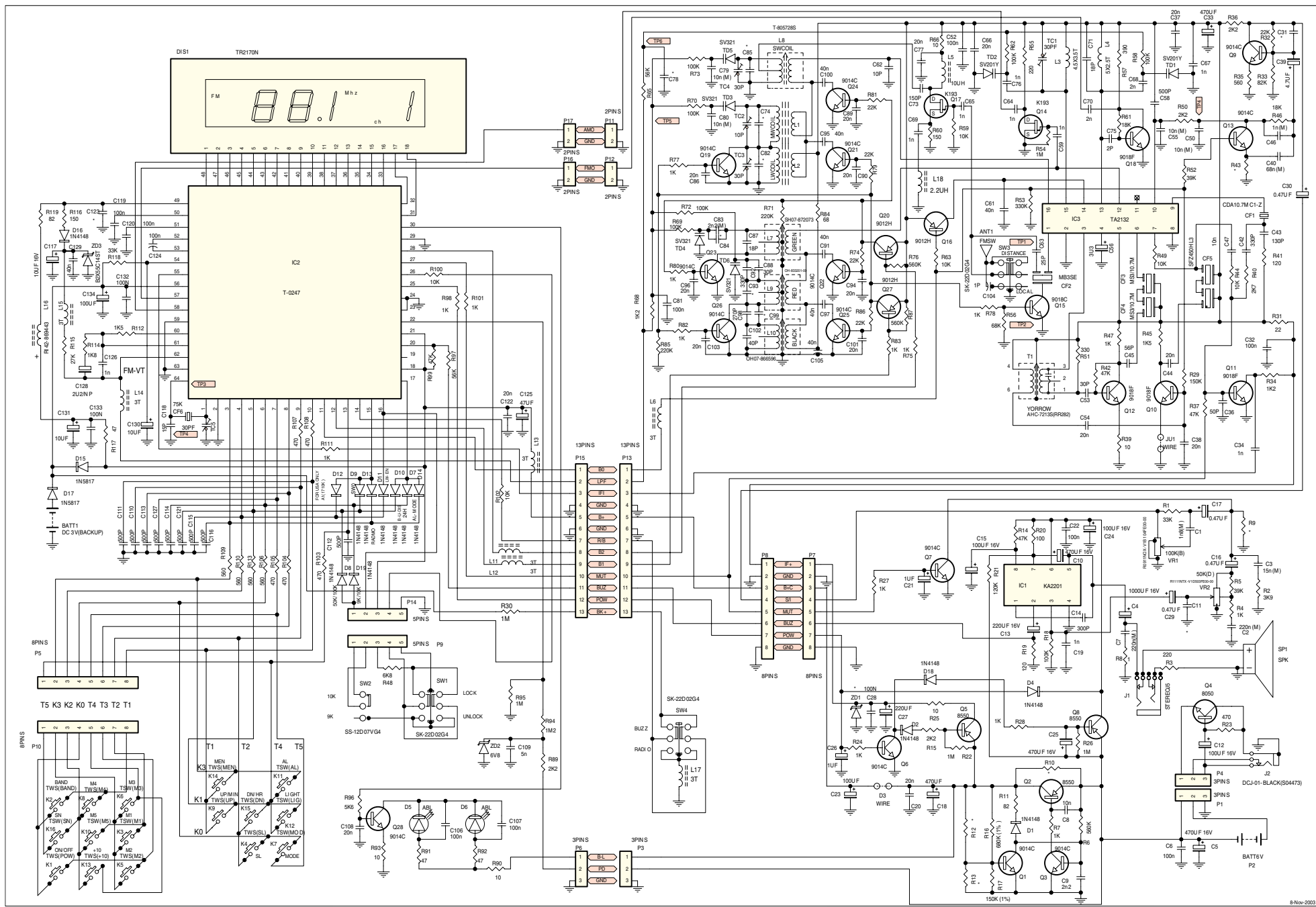












8-Nov-2003

Alignment Information

Model : DRUNDIG OB70
Ref. No. : OB70

A) FM Radio section

1) FM IF

INPUT	SIGNAL	OUTPUT	SET RADIO	ADJUST	ADJUST FOR	REMARK
						NO NEED TO ADJUST

2) RF VOLTAGE

BAND	SIGNAL	OUTPUT	SET RADIO	ADJUST	ADJUST FOR	REMARK
FM	--	TP6,GND	87.5MHz	L4	2.1~2.3V	high end 7~8V

3) FM RF

INPUT	SIGNAL	OUTPUT	SET RADIO	ADJUST	ADJUST FOR	REMARK
TP1,2	90MHz	Speaker	90MHz	L3	Max. o/p	Vol. at max. position
TP1,2	106MHz	" "	106MHz	TC1	" "	" "

4) 75KHZ CRYSTAL

	OUTPUT	ADJUST	ADJUST FOR	REMARK
	TP3,GND	TC5	75K± 10HZ	

5) 4.332MHZ CRYSTAL

	OUTPUT	ADJUST	ADJUST FOR	REMARK

Note :

1. Use digital meter to measurement each required voltage on above items
2. Use weak signal in RF alignment
3. Radio & LCD board must be connected before alignment
4. Use the frequency counter to measurement each required frequency on about items.

Alignment Information

Model : GRUNDIG OB70
Ref. No. : OB70

B) AM Radio section

1) AM IF

INPUT	SIGNAL	OUTPUT	SET RADIO	ADJUST	ADJUST FOR	REMARK
AM ANT	450KC	TP4,GND	Quiet Point	T1	Max. o/p symmetrical	Vol. at min. position

2) RF VOLTAGE

BAND	SIGNAL	OUTPUT	SET RADIO	ADJUST	ADJUST FOR	REMARK
MW	--	TP5,GND	522KC	L9	1.6~1.7V	Observe high end < 8.8V

3) MW RF

INPUT	SIGNAL	OUTPUT	SET RADIO	ADJUST	ADJUST FOR	REMARK
AM ANT	558KC	Speaker	558KC	L1	Max. o/p	Vol. at max. position
AM ANT	1440KC	" "	1440KC	TC2	" "	" "

4) RF VOLTAGE

BAND	SIGNAL	OUTPUT	SET RADIO	ADJUST	ADJUST FOR	REMARK
LW	--	TP5,GND	144KC	L10	2.3V~2.5V	Observe high end <6.2V

5) LW RF

INPUT	SIGNAL	OUTPUT	SET RADIO	ADJUST	ADJUST FOR	REMARK
AM ANT	153KC	Speaker	153KC	L2	Max. o/p	Vol. at max. position
AM ANT	261KC	" "	261KC	TC3	" "	" "

6) RF VOLTAGE

BAND	SIGNAL	OUTPUT	SET RADIO	ADJUST	ADJUST FOR	REMARK
SW	--	TP5,GND	5.95MHz	L7	1.6~1.7V	Observe high end 8~9V

7) SW RF

INPUT	SIGNAL	OUTPUT	SET RADIO	ADJUST	ADJUST FOR	REMARK
SW ANT	6MHz	Speaker	6MHz	L8	Max. o/p	Vol. at max. position
SW ANT	14.5MHz	" "	14.5MHz	TC4	" "	" "

Note :

1. Use digital meter to measurement each required voltage on above items
2. Use weak signal in RF alignment
3. Radio & LCD board must be connected before alignment
4. Use the frequency counter to measurement each required frequency on about items.