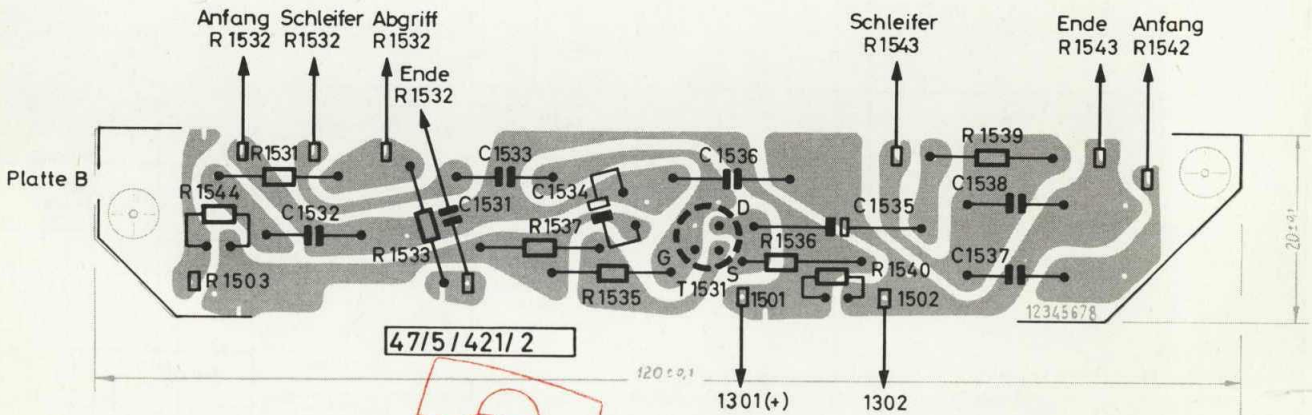
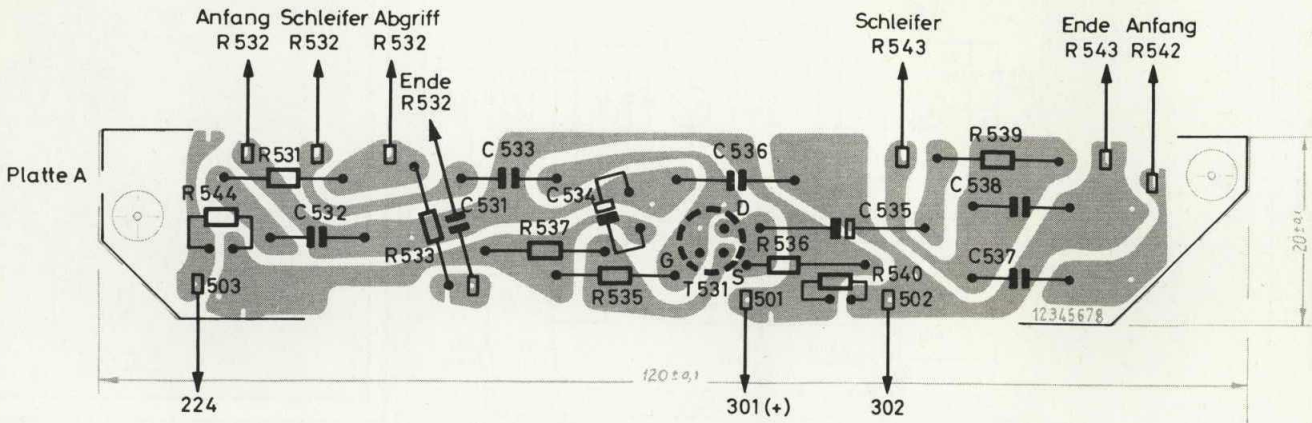
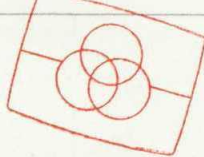


TELEFUNKEN Operette hifi 201



47/5 / 421 / 2



Free service manuals
 Gratis schema's
 Digitized by

www.freeservicemanuals.info

R 532/1532 Lautstärke
 Volume control
 Réglage de puissance
 Volumeregelaar

Bu 203 Tonbandgerät
 Tape recorder
 Magnétophone
 Bandrecorder

R 543/1543 Tiefen
 Bass control
 Réglage des graves
 Toonregeling "laag"

Bu 202 Plattenspieler
 Record player
 Tourne-disques
 Platenspeler

R 542/1542 Höhen
 Treble control
 Réglage des aiguës
 Toonregeling "hoog"

La 1 / La 2 Skalenbeleuchtung
 Dial illumination
 Eclairage du cadran
 Schaalverlichting

R 541 Balance
 Balancing control
 Réglage de balance
 Balansregelaar

R 316/1316 Ruhestromeinstellung
 No-Signal current control
 Réglage du courant sans signal
 Regelaar van de ruststroom

La 4 UKW-Stereo-Anzeige
 FM stereo indicator
 Indicateur de syntonisation FM
 FM stereo indicatie

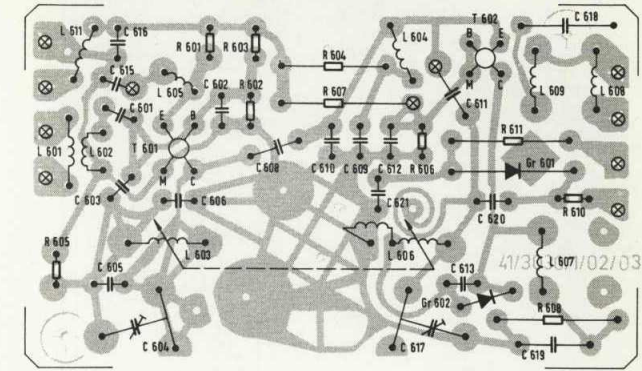
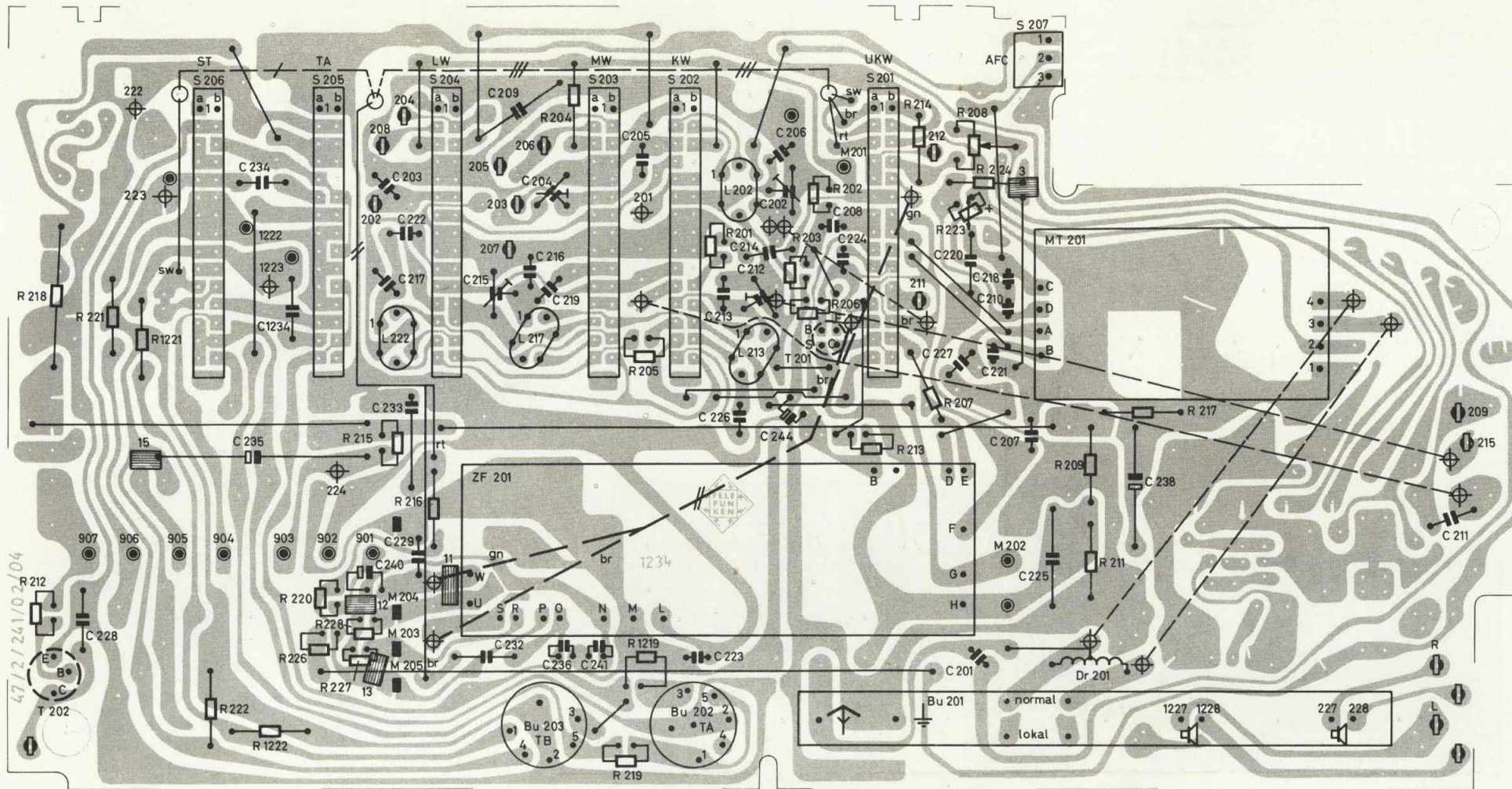
R 905 Einstellung des Übersprechminimums
 Control cross-talk minimum
 Réglage du courant de diaphonie sur minimum
 Instelling van het overspreekminimum

In 1 Abstimmanzeige
 Tuning indicator
 Indicateur de syntonisation
 Afstemindicatie
 Beleuchtung für Instrument Abstimmanzeige
 Illumination for Tuning indicator
 Eclairage de l'instrument indicateur de syntonisation
 Verlichting van het instrument voor Afstemindicatie

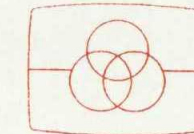
R 2219 AM-Unterdrückung
 AM suppression
 Suppression AM
 AM onderdrukking

R 208 Einsteller für Abstimmanzeige
 Adjustment for tuning indicator
 Réglage pour l'indicateur
 Instelling voor afstemindicatie

47/2/253 2/01

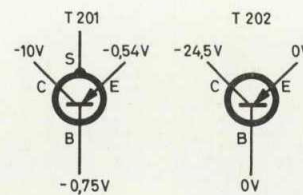
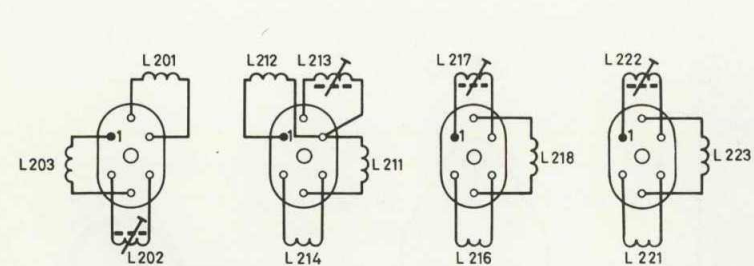


⊗ Stifte 41/3036/1/6A



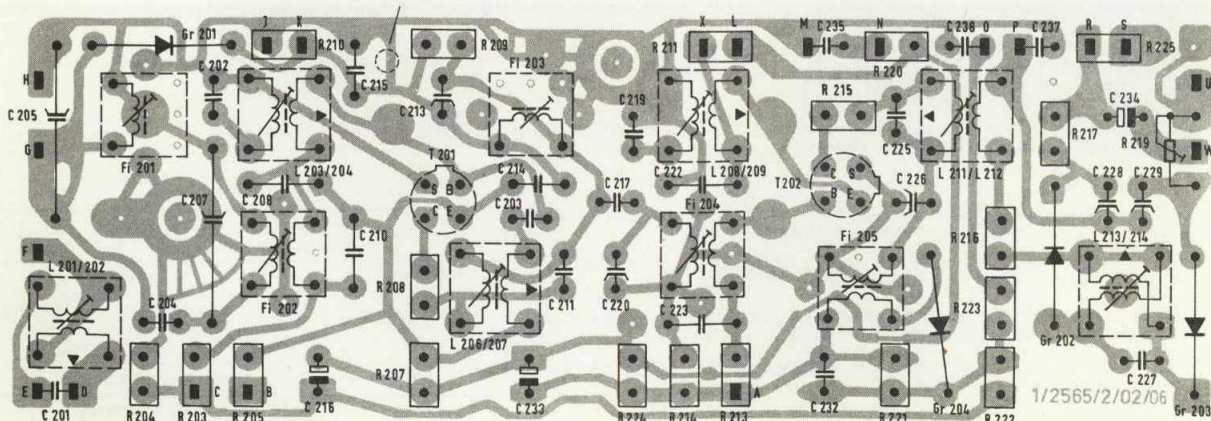
Free service manuals
 Gratis schema's
 Digitized by

www.freeservicemanuals.info

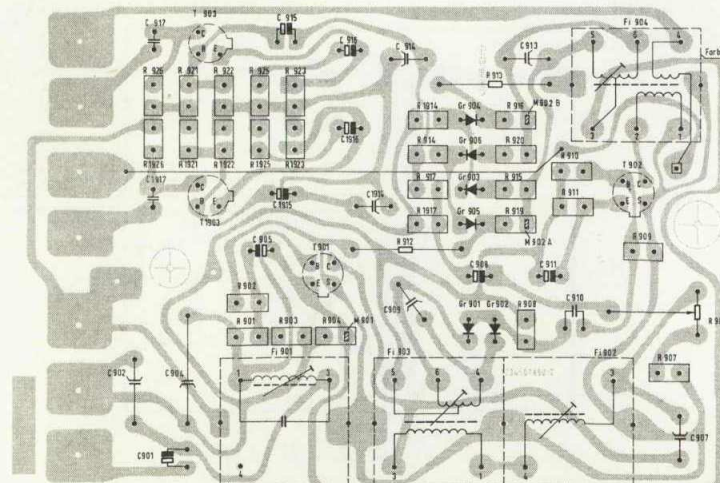


- Brücken auf Bestückungsseite
- - - Brücken auf Schaltungsseite
- Kopf Schaft
- □ 47.0002.008-01
- ○ 43.1000.015-49
- ⊖ ⊕ 43.1000.009-19
- ⊕ Einlötlauge
- ▬ Überlötstelle 3,12,15 vor dem Abgleich zulöten
11,13 nach dem Abgleich zulöten

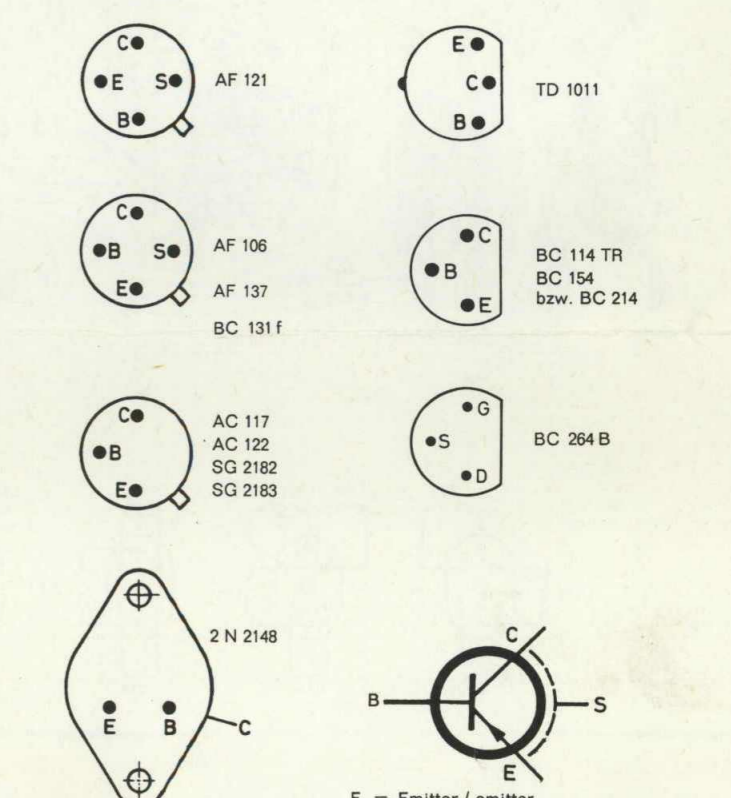
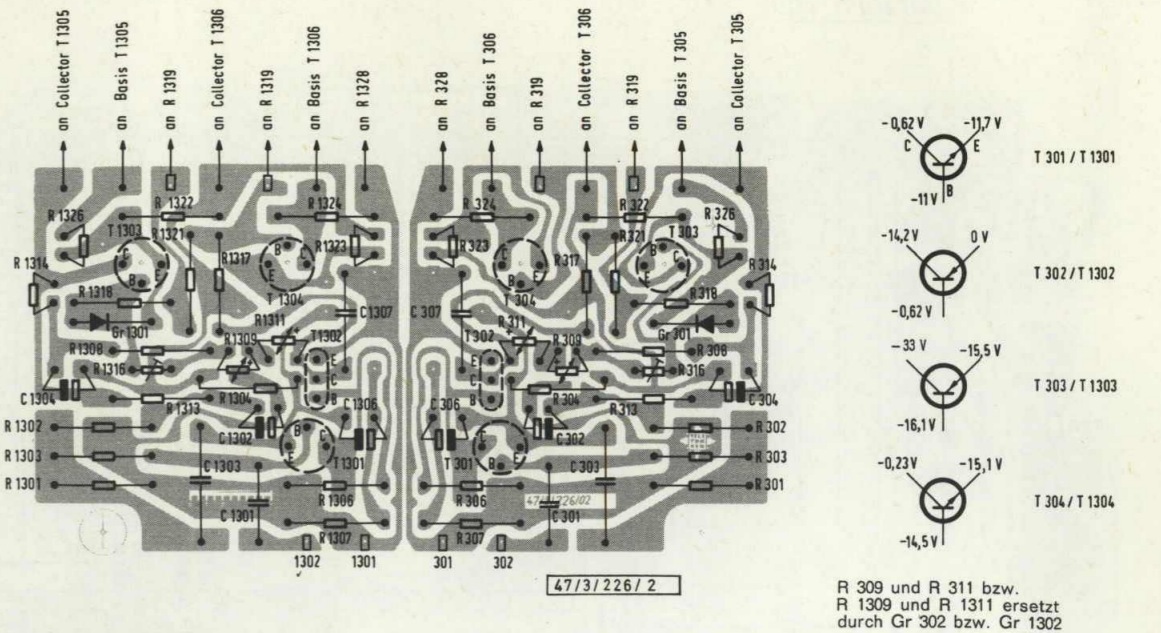
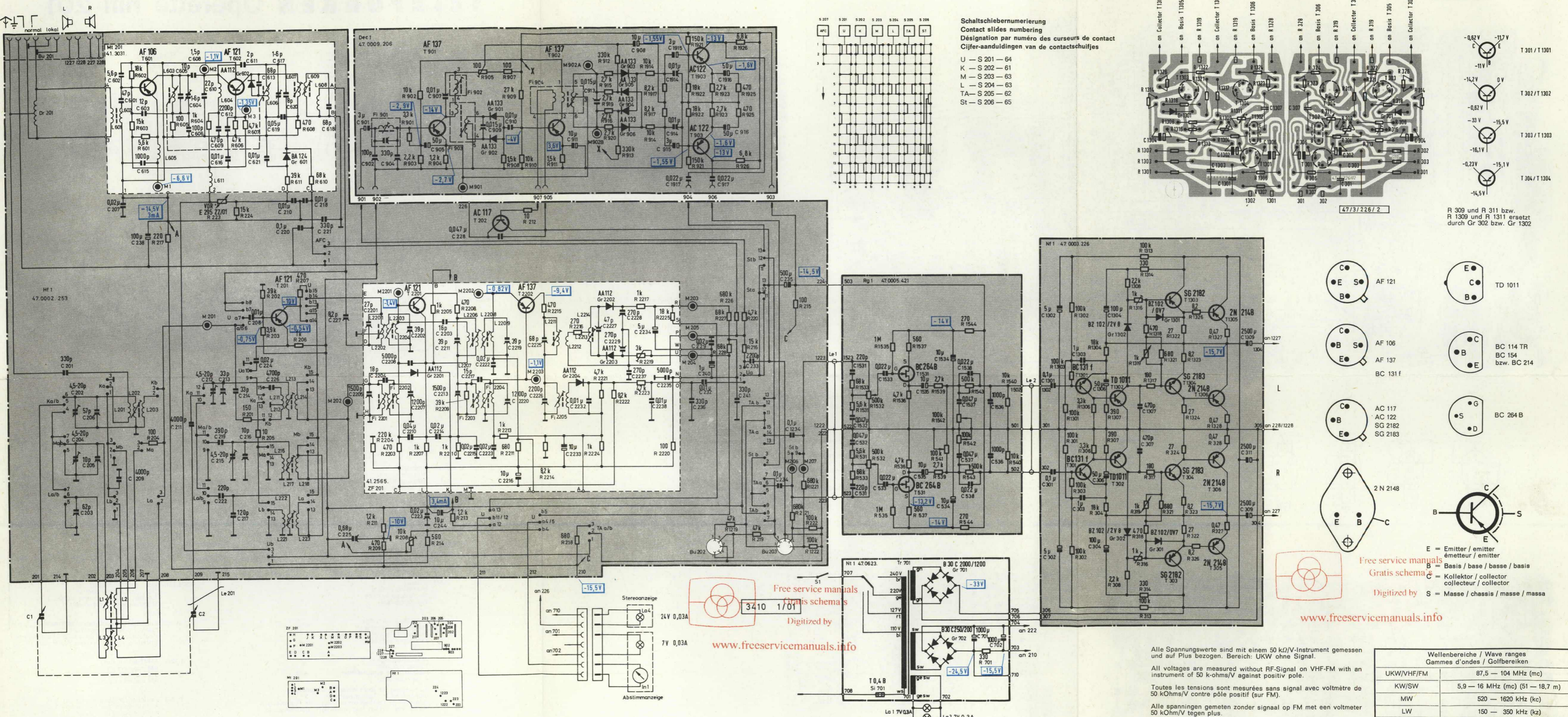
Ansicht auf Schaltungsseite



2565/2/6A



47/9/206/2/03



Free service manuals
 Gratis schema's
 Digitized by
 www.freeservicemanuals.info

Wellenbereiche / Wave ranges Gammas d'ondes / Golfbereiken	
UKW/VHF/FM	87,5 - 104 MHz (mc)
KW/SW	5,9 - 16 MHz (mc) (51 - 18,7 m)
MW	520 - 1620 kHz (kc)
LW	150 - 350 kHz (kz)

ZF / IF / MF: FM = 10,7 MHz (mc)
 AM = 480 kHz (kc)

TELEFUNKEN Operette hifi 201