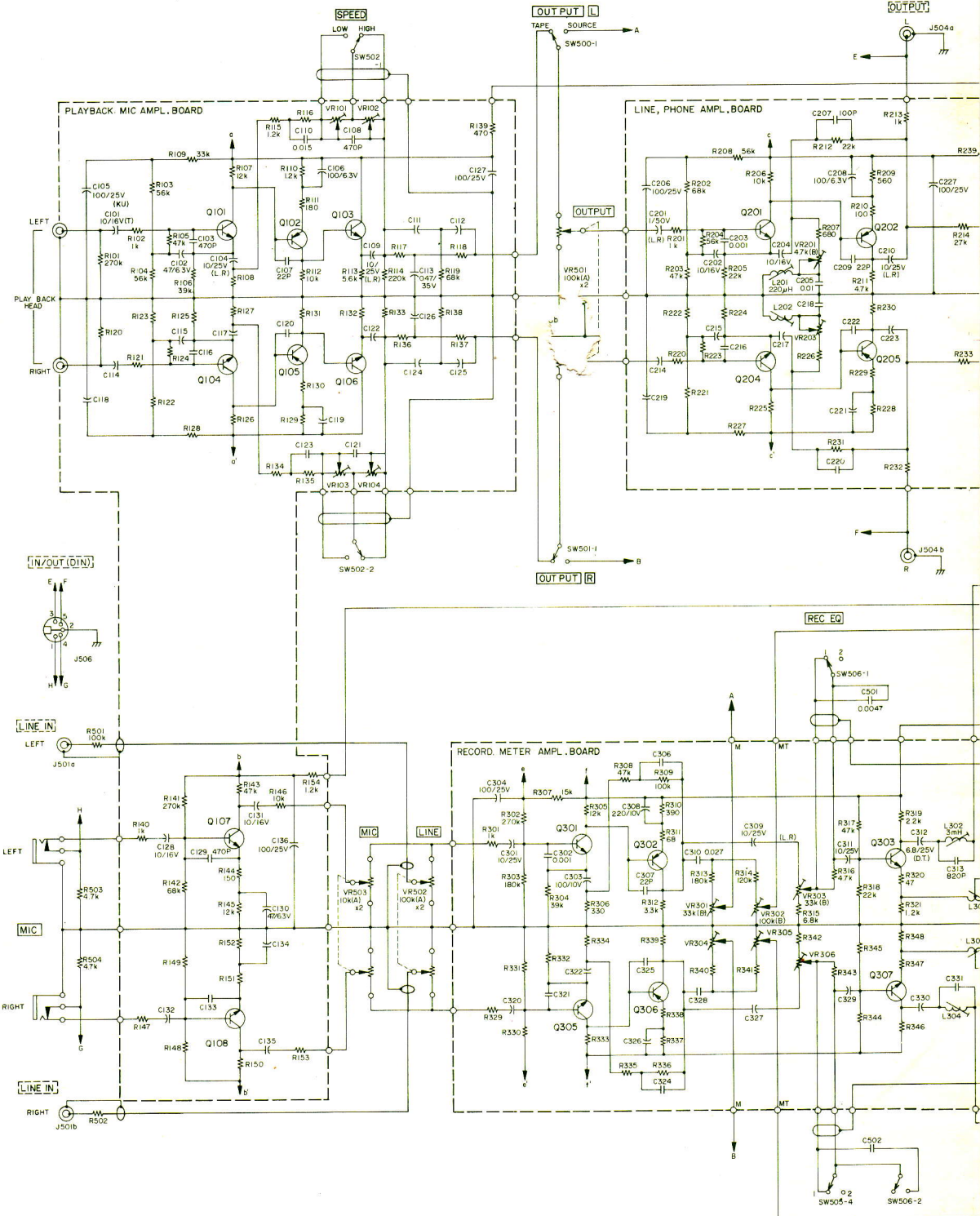


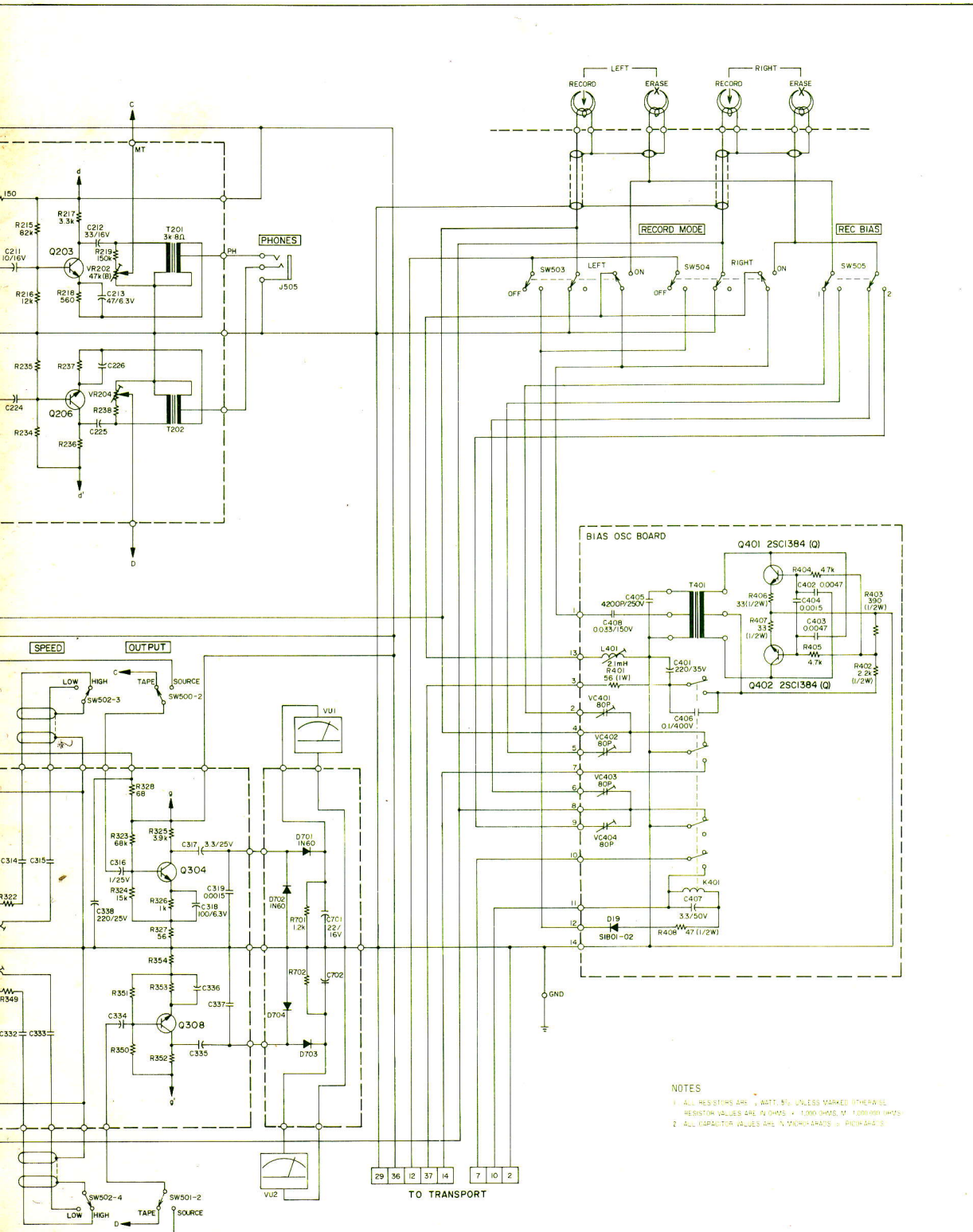
# Schematic diagram-1 Schematisches Diagramm-1



CIRCUIT REF. NO.	DESCRIPTION	CIRCUIT REF. NO.	DESCRIPTION
Q101/Q104	2SC1000(BL) 2SC1345(E)	Q301/Q305	2SC693(G) 2SC900(E)
Q102/Q105	2SA494(Y) 2SA750(E)	Q302/Q306	2SA494(Y) 2SA750(E)
Q103/Q106	2SC828(S) 2SC536(G)	Q303/Q307	2SC828(S) 2SC945(LK)
Q107/Q108	2SC1000(BL) 2SC1345(E)	Q304/Q308	2SC828(S) 2SC536(G)
Q201/Q204	2SC693(G) 2SC900(E)		
Q202/Q205	2SA564(R) 2SA750(E)		
Q203/Q206	2SC536(F) or (G)		

PLAYBACK, MIC AMPL. BOARD						RECORD, METER AMPL. BOARD			
R108	R116	R117, R118	C111, C112	VR101	R322	C306, C324	C310, C328	C314	C316
A-3300SX(4T)	470	270k	33k	1.0	6.8k(B)	15k(B)	150	0.047	0.027
A-3300SX(2T)	560	470k	120k	0.22	6.8k(B)	6.8k(B)	82	0.082	0.033

# Diagramme schématique-1 · Diagrama esquemático-1



NOTES  
 1. ALL RESISTORS ARE 1/4WATT, 5% UNLESS MARKED OTHERWISE.  
 RESISTOR VALUES ARE IN OHMS, K = 1,000 OHMS, M = 1,000,000 OHMS.  
 2. ALL CAPACITOR VALUES ARE IN MICRO-FARADS (μF) UNLESS MARKED OTHERWISE.

L301
24/42mH
1.5/24mH

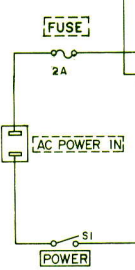
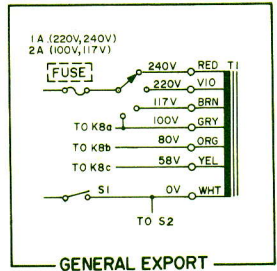
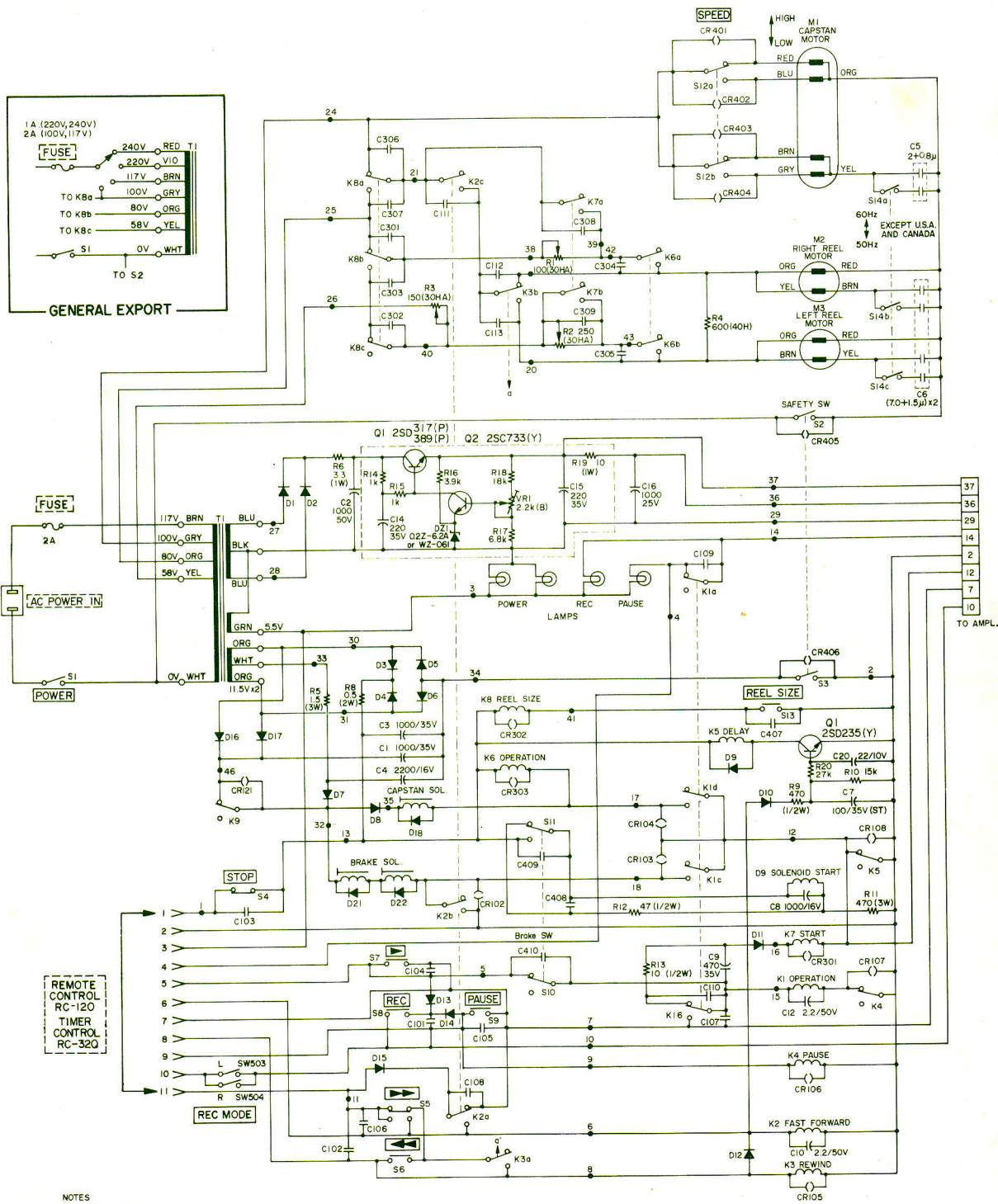
6			
5			
4			
3			
2			
1	06-76		
REVISION	DATE	CHANGE NO.	

5-105

**PREAMPLIFIER**  
 MODEL NO. **A-3300SX** SHEET NO. **1**

**TEAC CORPORATION**

**Schematic diagram-2      Schematisches Diagramm-2      Diagramme schématique-2      Diagrama esquemático-2**



- NOTES**
- ON FRONT PANEL
  - ▭ ON REAR PANEL
  - ⊖ SPARK KILLER 0.1+120/400WV
  - D21, D22: 2T ONLY
  - : 0.1/400WV
  - : BOARD NO.

- NOTES**
1. ALL RESISTORS ARE \_\_\_\_\_ WATT, 5% UNLESS MARKED OTHERWISE. RESISTOR VALUES ARE IN OHMS (k-1,000 OHMS, M-1,000,000 OHMS).
  2. ALL CAPACITOR VALUES ARE IN MICROFARADS (μ- PICOFARADS).

6									
5									
4									
3									
2									
1	06-76	DATE	CHANGE NO.						

**TAPE TRANSPORT**

MODEL NO. \_\_\_\_\_ SHEET NO. \_\_\_\_\_

**A-3300SX**

**TEAC CORPORATION**