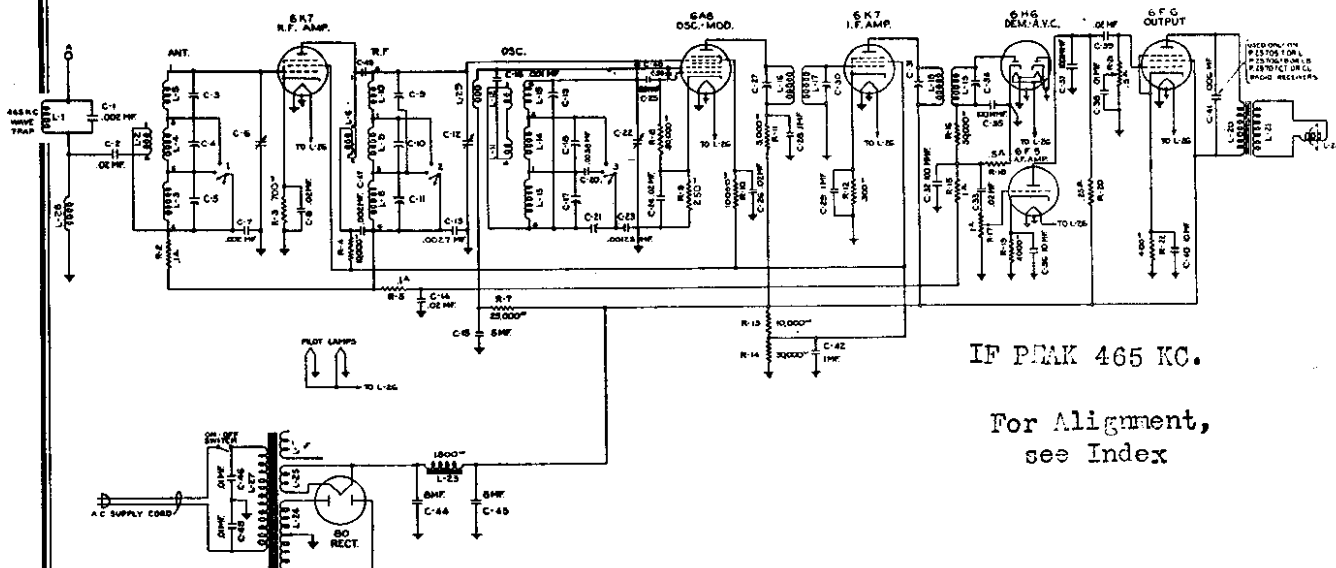


MODELS 61T, 61TB, 61L
61LB, 61W, 61WB

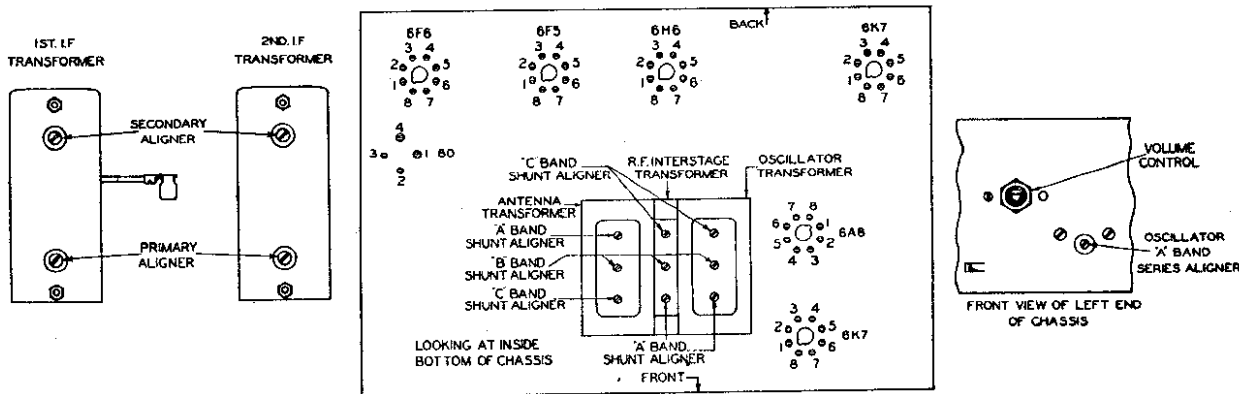
Schematic, Socket
STROMBERG-CARLSON TEL. MFG. CO. Trimmers, Voltage



IF PEAK 465 KC.

For Alignment,
see Index

Schematic Circuit of Receiver.



Terminal Layout for Voltage Measurement Chart and Location of the Various Aligning Capacitors.

Tube	Circuit	Cap.	Terminals of Sockets								Heater Voltages Between Terminals Nos. at 120 Volts
			1	2	3	4	5	6	7	8	
6K7	R. F. Amp.	0	0	0	+ 50	+100	+ 4.5	—	0	+ 4.5	2-7, 6.3 Volts
6A8	Osc.-Mod.	0	0	0	+220	+ 72	- 6	+160	0	+ 1.8	2-7, 6.3 Volts
6K7	I. F. Amp.	0	0	0	+235	+100	+ 3	—	0	+ 3	2-7, 6.3 Volts
6H6	Dem.—A. V. C.	—	0	0	0	0	- .5	—	0	0	2-7, 6.3 Volts
6F5	A. F. Amp.	0	0	0	—	+ 58	—	—	0	+ 1.2	2-7, 6.3 Volts
6F6	Output	—	0	0	+220	+235	0	—	0	+14	2-7, 6.3 Volts
80	Rectifier	—	+355	335	335	+355	—	—	—	—	1-4, 4.8 Volts

Set tuned to 1000 kc., no signal. A. C. voltages are indicated by italics.

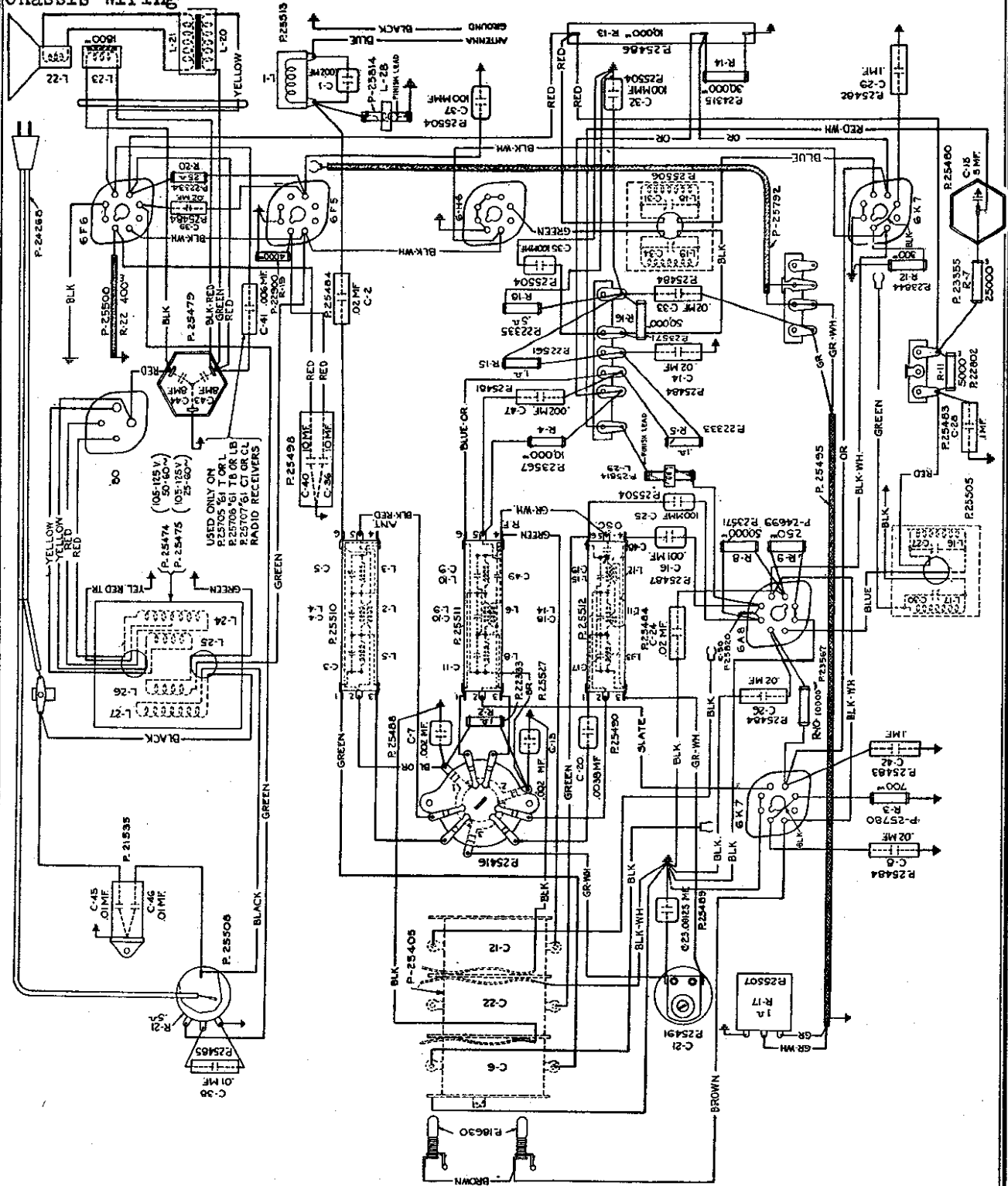
APPARATUS SPECIFICATIONS

No. 61-T	-----	50-60 Cycles	-----	P-25705 Chassis; P-25464 Loud Speaker
No. 61-TB	-----	25-60 Cycles	-----	P-25706 Chassis; P-25464 Loud Speaker
No. 61-L	-----	50-60 Cycles	-----	P-25705 Chassis; P-25464 Loud Speaker
No. 61-LB	-----	25-60 Cycles	-----	P-25706 Chassis; P-25464 Loud Speaker
No. 61-W	-----	50-60 Cycles	-----	P-25795 Chassis; P-25601 Loud Speaker
No. 61-WB	-----	25-60 Cycles	-----	P-25796 Chassis; P-25601 Loud Speaker

©John F. Rider, Publisher

MODELS 61T, 61TB, 61L
61LB, 61W, 61WB
Chassis Wiring

STROMBERG-CARLSON TEL. MFG. CO.



Type of Circuit	Superheterodyne
Tuning Ranges	A—540 to 1500 kc.; B—1450 to 3500 kc.; C—5600 to 18,000 kc.
Number and Type of Tubes	2 No. 6K7, 1 No. 6A8, 1 No. 6H6, 1 No. 6F5, 1 No. 6F6, 1 No. 80
Voltage Rating	105 to 125 Volts
Frequency Rating	25-60 Cycles and 50-60 Cycles
Wattage Rating	60 Watts
Intermediate Frequency	465 Kc.