

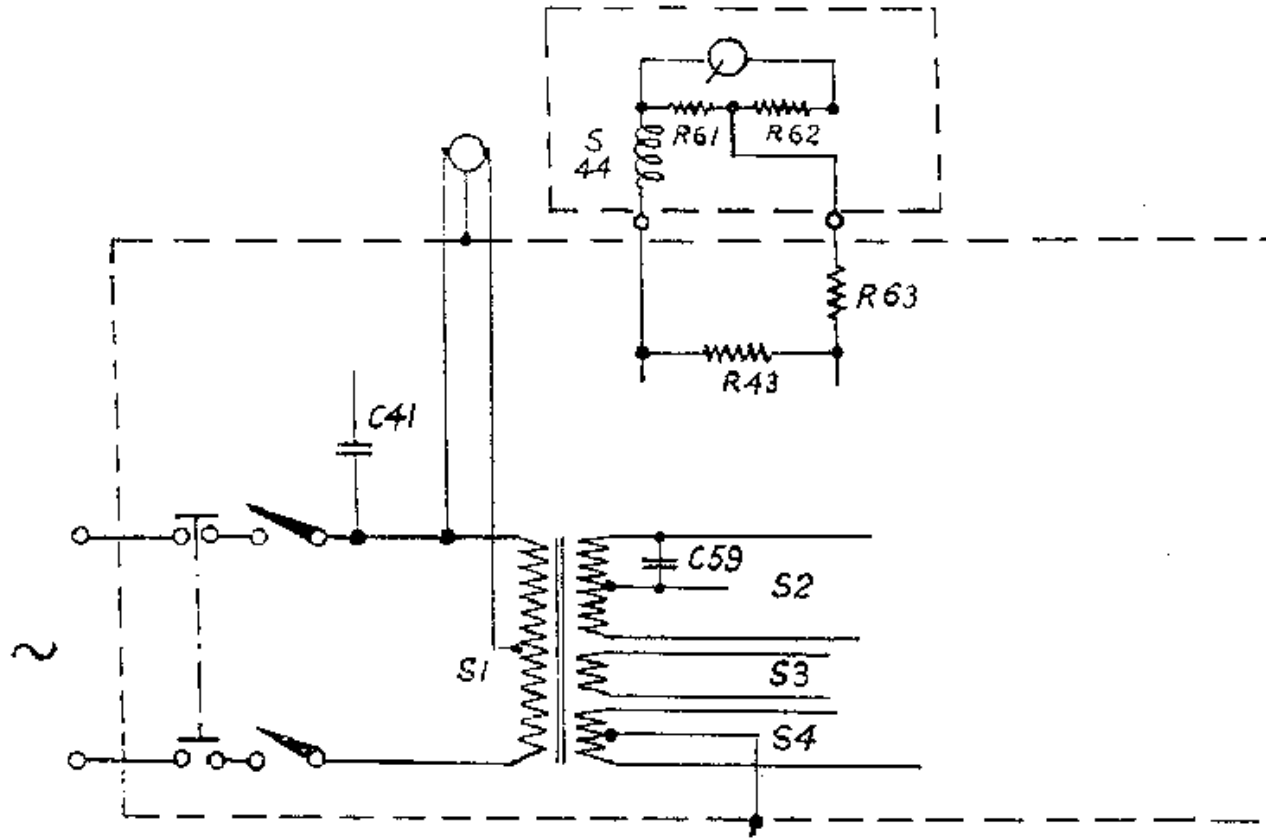
POINT TO POINT TESTS.

CAPACITIES.

$$11 \frac{27}{260} \text{ should be } 9 \frac{27}{355}$$

TYPE 691A.

Modification for 691A from 787AX.



Motor connected to 110 v. tapping.

Fig. 1.

TYPE 691U.

Modification for 691U from 691A.

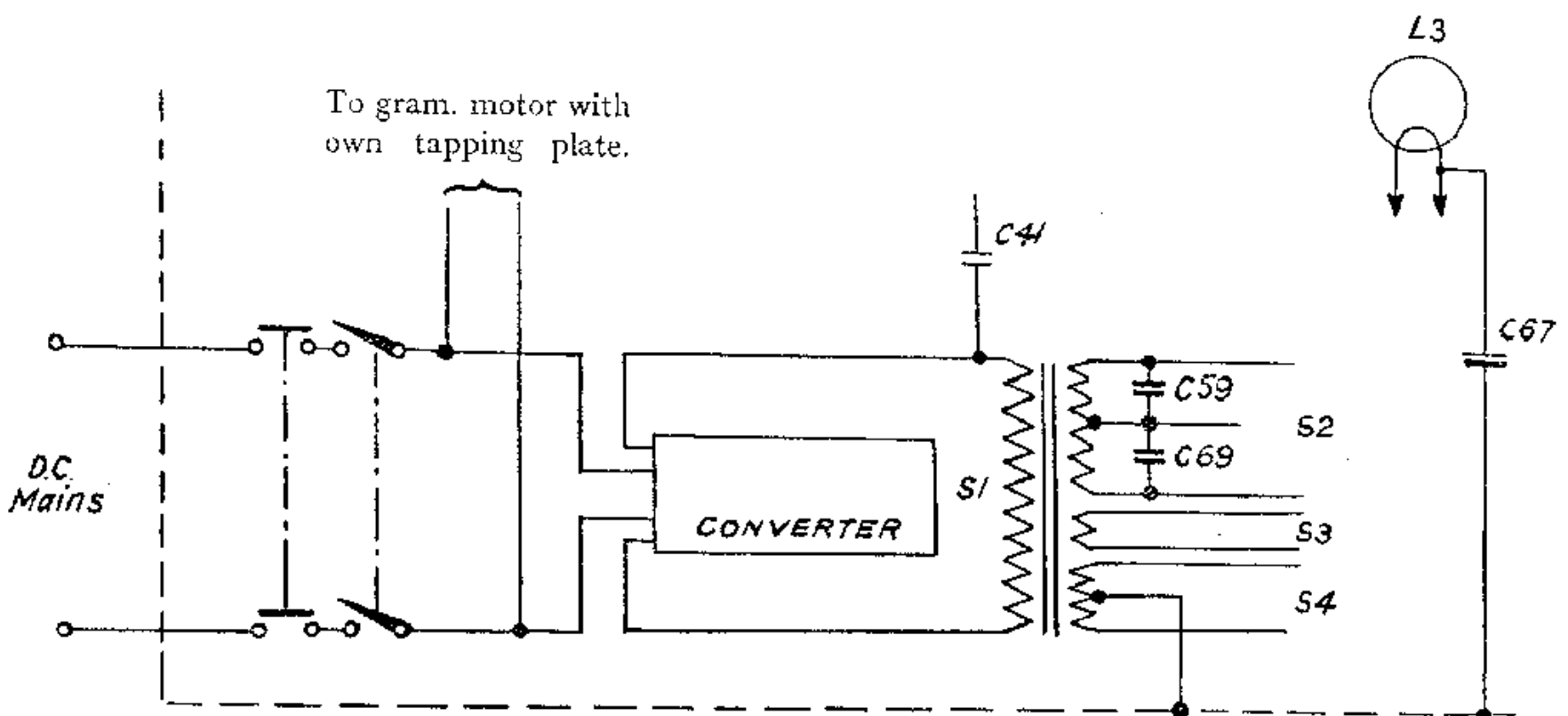


Fig. 2.

Note.—Mains filter coils are inserted in mains leads.

LIST OF COMPONENTS

Not included in Service Manual for :—787AX,
7880 C, 7881 C and General Parts List.

Fig.	Item.	Description.	Code No.
		Flat spring	28.752.470
		Top back plate (691A/U)	M.K.39557
		Bottom back plate (691A only)	M.K.39552
		Bottom back plate (691U†)	M.K.39555
		Inspection plate	M.K.39553
		Felt disc	M.K.47508
		Station scale	M.K.69754
		Felt strip for scale... ..	M.K.67527
		Rubber strips for scale	M.K.67532
		Silk	T.S.182
		Lid stop arm	—
		Lid hinge	—
		Needle bowl	23.648.030
		Distance pieces (for rubber feet)	25.074.170
		Cap for needle bowl	28.257.980
		Plate for scale	28.284.090
		L12	00.071.990
		S8, C21	28.572.670
		S9, 10, 11, 12, C9	28.572.680
		S20, S21, S39	28.588.350
		S22, S23, C17	28.572.690
		S24, S25, S35, C19	28.572.660
		R60, 12,500 ohms	28.773.810
		R58, 10 ohms	28.770.730
		R61, 16,000 ohms... ..	28.773.820
		R62, 80,000 ohms... ..	28.773.890
		R63, 0.1M ohm	28.773.900
		C50, 50,000 $\mu\mu\text{F}$	28.198.920
		(instead of)... ..	28.199.060
		S44. Incorporated in pick-up	—
		R43, 0.16M ohms	28.773.920
		(instead of)... ..	28.770.470
		S31. Cone and coil	28.220.610
		C69 † 20,000 $\mu\mu\text{F}$	28.201.650
		C67 † 0.1 μF	28.201.180
		† Converter Unit appropriate type	—
		† Garrard motor and pick-up	A.C. type 691A
		† Garrard motor and pick-up	"U" type 691U
		† S45 } Mains coil	28.587.060/A
		S46 }	

† Fitted in 691U only.

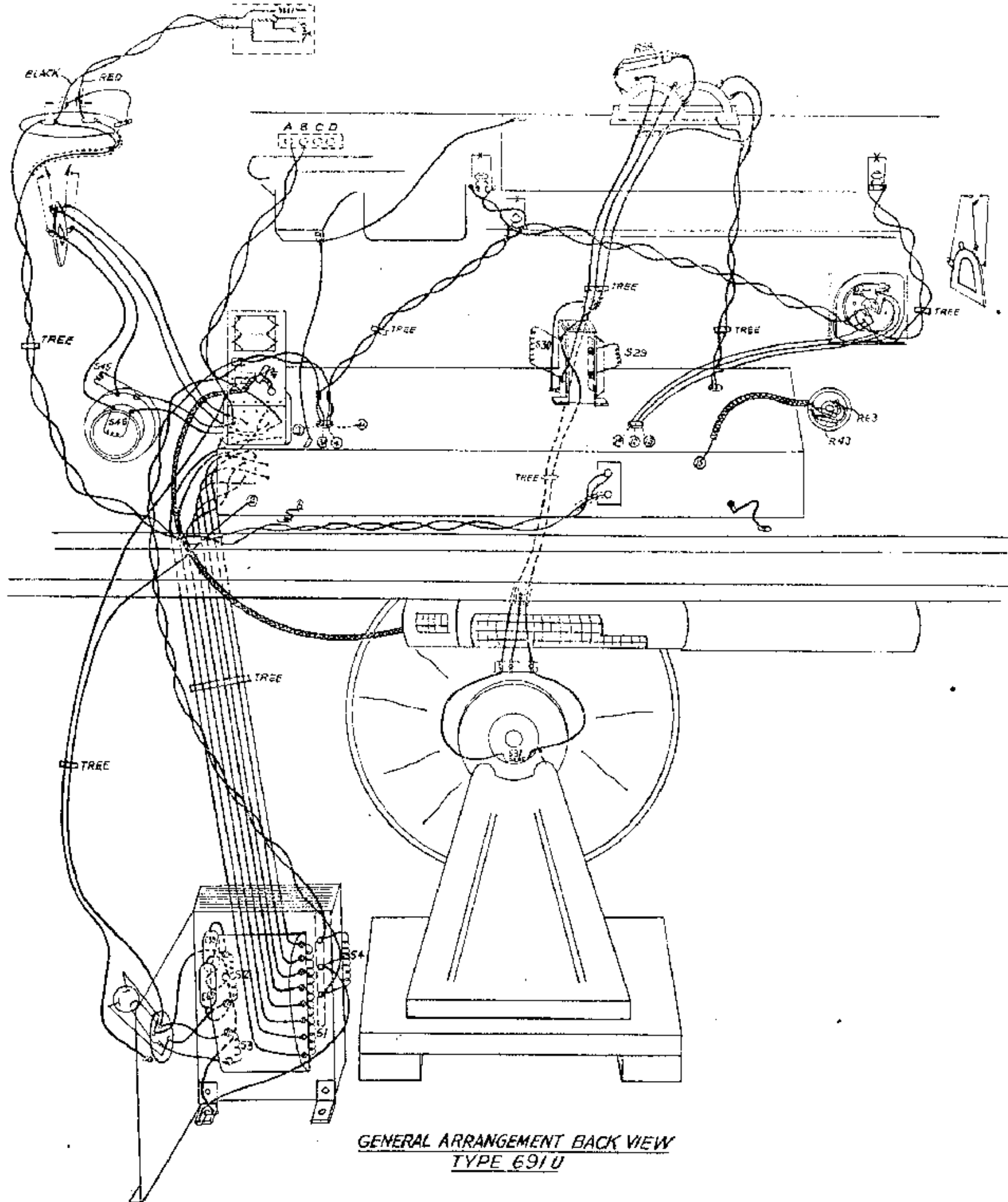


Fig. 3.