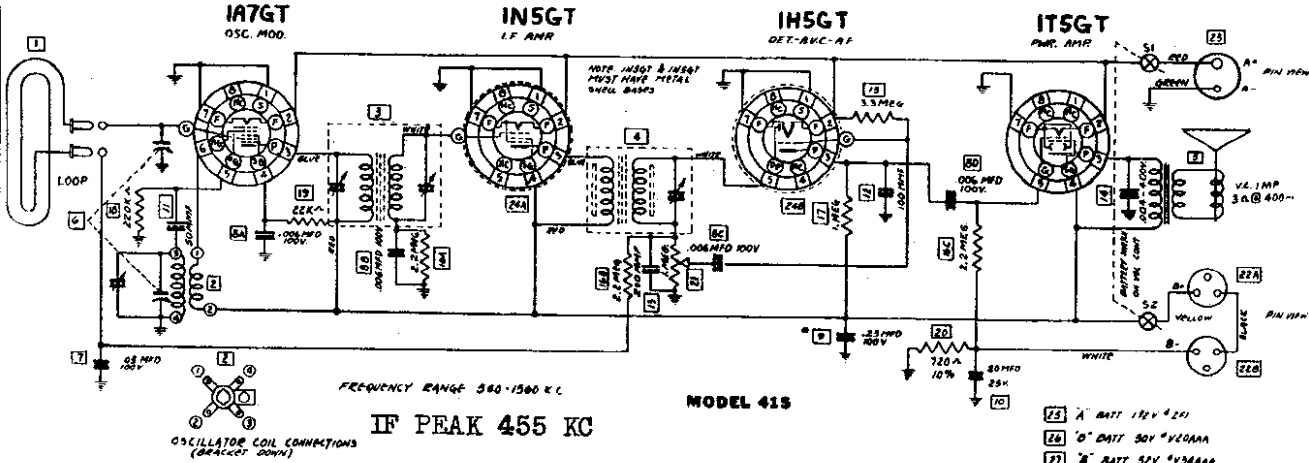


MODELS 41A, 41E

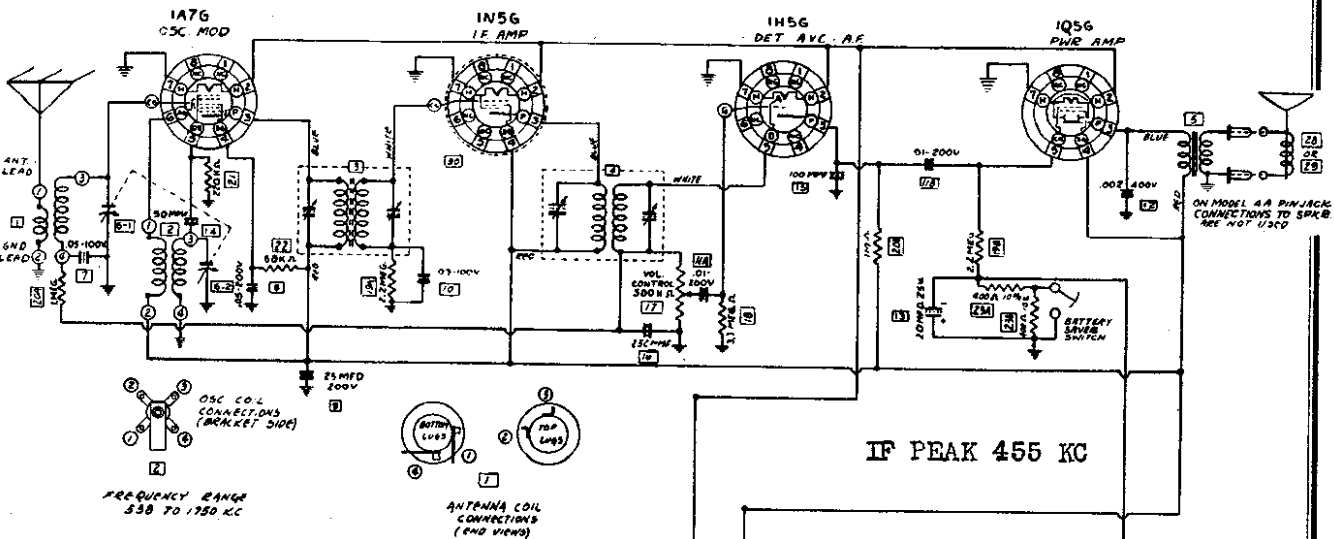
MODEL 41S

Schematics, Alignment

GALVIN MFG. CORP.



MODEL 41S ALIGNMENT 1. Conn. sig. gen. to grid of first det. tube thru a .05 cond. Do not remove grid cap. Conn. o.p. meter across spkr. voice coil. Turn cond. gang completely out of mesh. Loop must be conn. to chass. at all times. 2. Set sig. gen. at 455 K.C.; carefully adj. the two I.F. trim. and the one DIODE trim. to point showing highest read. on o.p. metr. 3. Turn sig. gen. to 1560 K.C. and with cond. gang completely out of mesh, adj. OSC. trim. until 1560 K.C. sig. is heard. 4. No further adjustments.



MODELS 41A, 41E ALIGNMENT 1. Conn. sig. gen. to grid of first det. tube and thru a .05 MF cond. and to chass. Do not remove grid cap. Conn. o.p. metr across spkr. voice coil. Turn cond. gang completely out of mesh. 2. Set sig. gen. at 455 KC and carefully adj. the two IF trim. and the two DIODE trim. to point show. highest read. on o.p. metr. 3. Conn. sig. gen. to ant. and gnd. leads using a .0002 MF cond. in ant. lead. 4. Turn sig. gen. to 1750 KC and with cond. gang completely out of mesh adj. OSC. trim. until 1750 KC sig. is heard. 5. Set sig. gen. at 1400 KC and turn cond. gang to the sig. at 1400 KC. Adj. ANT. trim. to point show. highest read. on o.p. metr.

