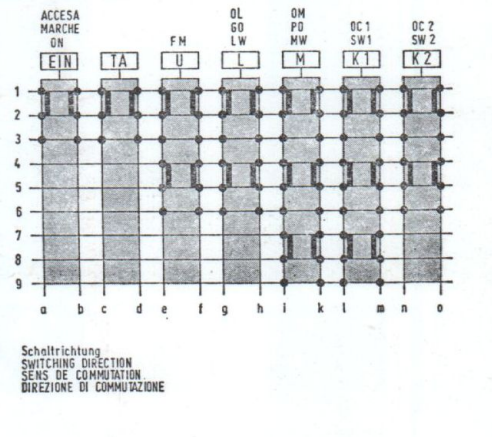


C:	401,402,405,407,408,411, 415, 403,412,314, 404, 405,413,322,316, 414, 417, 418, 416, 318, 317, 319,321,419, 422, 324,323, 423, 424, 438,326,327, 379,328, 331,333,334,425,433,434,426,429,435,511,427,431,432,436,437,512, 428, 513, 656, 514, 517, 516, 653, 806, 515, 664, 518, 807, 518, 523, 809, 520, 521, 522, 651, 524, 640, 641, 642, 661, 652, 653, 662, 643, 601, 602, 525, 603, 526, 804, 527, 605, 529, 606, 659, 654, 607, 649, 655
R:	316, 312, 401, 402, 403, 404, 406, 313, 405, 314, 407, 317, 408, 511, 512, 513, 514, 515, 535, 516, 517, 518, 519, 801, 802, 803, 522, 520, 521, 523, 524, 525, 622, 621, 526, 527, 620, 624, 654, 655, 656, 640, 627, 628, 625, 626, 529, 530, 601, 602, 603, 630, 631, 632, 533, 534, 531, 532, 604, 605, 633, 650, 634, 635, 651, 606, 607, 608, 652



Wellenbereiche:
WAVE BANDS:
GAMMES D'ONDES:
GAMME D'ONDA:

LW - GO - OL	145	ca. 280 kHz
MW - PO - OM	510	1620 kHz
K1 - SW1-OC1	5,9	6.2 MHz
K2 - SW2-OC2	6,1	18.5 MHz
UKW - FM	87,5	108 MHz
AM - ZF	460 kHz	
FM - ZF	10,7 MHz	

UKW - Mischteil
FM - MIXER STAGE
FM - MELANGEUR
FM - PARTE MISCELATRICE } 19 420 - 008.00

ZF - Baustein
IF - UNIT
BLOC - FI
UNITA MODULARI - FI } 19 427 - 002.00

HF - NF - Platte
RF - AF - BOARD
PLAQUE - HF - BF
PIASTRA - AF - BF } 19 310 - 279.00

Widerstandsplatte
RESISTANCE BOARD
PLAQUE DE RESISTANCE
PIASTRA RESISTENZA } 19 310 - 275.00

Träger-Platte
SUPPORTING PLATE
PLAQUE DE SUSPENSION
PIASTRA PORTANTE } 19 310 - 284.00

Ferrittonne, kpl
FERRITE ANTENNA
ANTENNE FERRITE
ANTENNA DI FERRITE } 19 426 - 009.00

Reglerplatte
CONTROL BOARD
PLAQUE DE REGLAGE
PIASTRA DI REGOLAZIONE } 19 310 - 285.00

Netzteilplatte
POWER SUPPLY BOARD
PLAQUE D'ALIMENTATION
PIASTRA D'ALIMENTAZIONE } 19 310 - 286.00

Spannungs- und Stromwerte gültig bei eingedrehtem Drehko ohne Signal
bei Batteriebetrieb 9V+
bei Netzbetrieb 220V+
[M] [W] [U] [I] [P]

VOLTAGE AND CURRENT VALUES ARE VALID WITH NO SIGNAL APPLIED AND CLOSED VARIABLE CAPACITOR
ON BATTERY OPERATION 9 V+
ON MAINS OPERATION 220 V+
[M] [W] [U] [I] [P]

LES VALEURS SONT VALABLES AVEC LE CONDENSATEUR VARIABLE ED/RT FERME ET SANS SIGNAL D'ANTENNE EN FONCTIONNEMENT SUR PILES 9 V+
EN FONCTIONNEMENT SUR SECTEUR 220 V+
[M] [W] [U] [I] [P]

I VALORI DELLE CORRENTI SONO VALIDE CON ASSENZA DI SEGNALE E CONDENSATORE VARIABILE CHIUSO ALIMENTAZIONE DA BATTERIA 9 V+
ALIMENTAZIONE DA RETE 220 V+
[M] [W] [U] [I] [P]

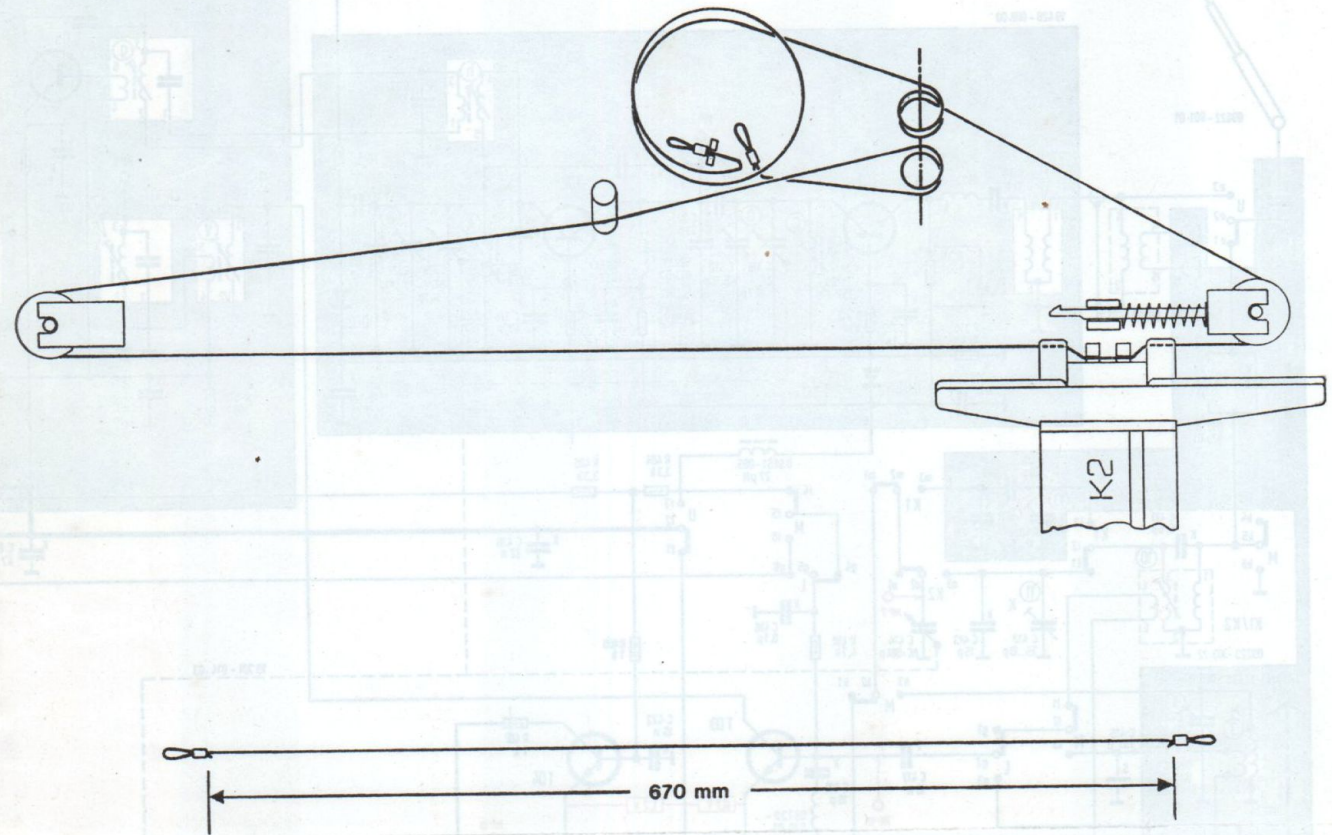
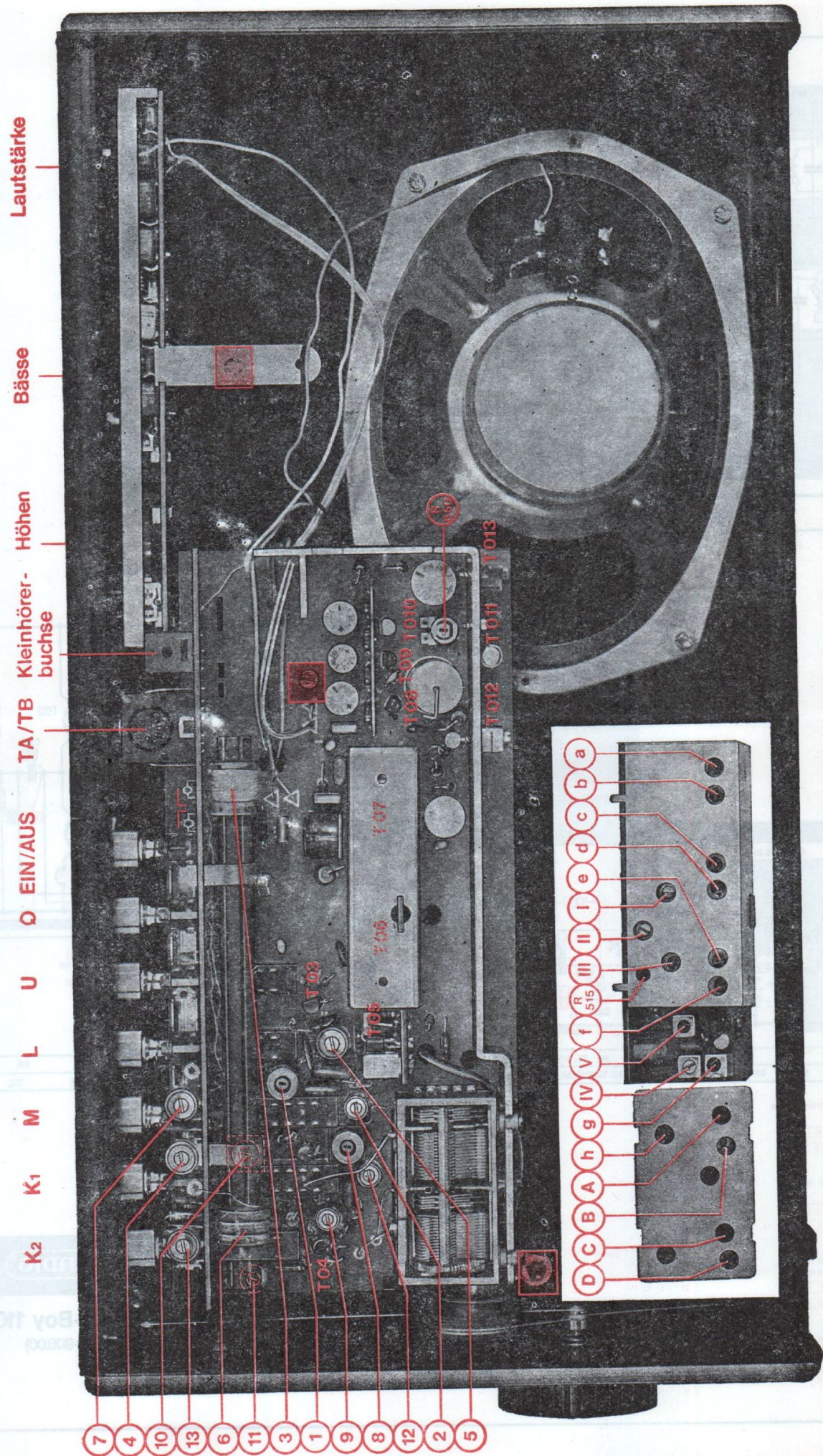
T 01	BF 314
T 02	BF 241
T 03	BF 240
T 04	BF 241
T 05	BF 241
T 06	BF 240
T 07	BF 241
T 08	BC 309 B
T 09	BC 238 C
T 10	BC 338
T 11	AC 121 S
T 12	AC 187 K
T 13	AC 188 K
D 01	BZ 102 1V4
D 02	BA 124
D 03	BZ 102 2V1
D 04	AA 112
D 05	AA 112
D 06	AA 112
D 07	0 377
D 08	0 377
D 09	7W 9.1 9554-206-97

F Folien-Kond. 1/8 W
K Keramik-Kond. 1/3 W
S Styroflex-Kond. 1/2 W
G Glimmer-Kond. DIN 8207
E Elko
T Tantal-Elko

GRUNDIG
Concert-Boy 1100
(15018-906.00)

Änderungen vorbehalten!
ALTERATIONS RESERVED!
MODIFICAZIONI RISERVATE!
CON RISERVA DI MODIFICAZIONE!

Abgleich-Lageplan
ALIGNMENT SCHEME
PLAN DE REGLAGE
PIANO DI TARATURA



Seilzug

Textilseil ca. 670 mm lang
(Drehko eingedreht)

DRIVE CORD

Textile cord approx. 670 mm long
(variable capacitor closed)

ENTRAINEMENT

câble en fibres textiles, longueur 670 mm environ
(condensateur variable fermé)

MONTAGGIO DELLA FUNICELLA

Funicella in materiale tessile lunga circa 670 mm
(condensatore variabile chiuso)