

# GRUNDIG

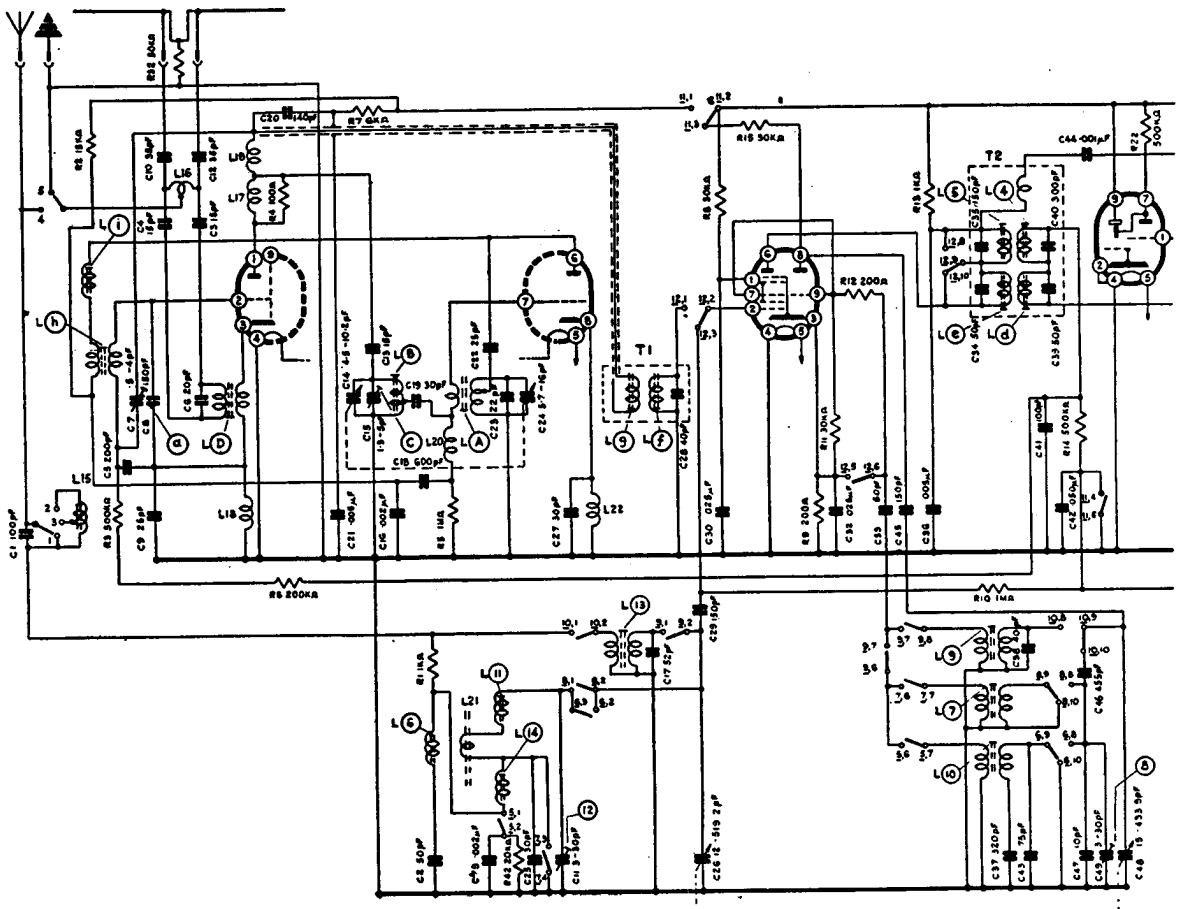
# Model 2043/W/3D

**General Description :** Six-valve (including tuning indicator), combination A.M./F.M. table receiver with "3D" triple loudspeaker system and independent bass and treble controls.

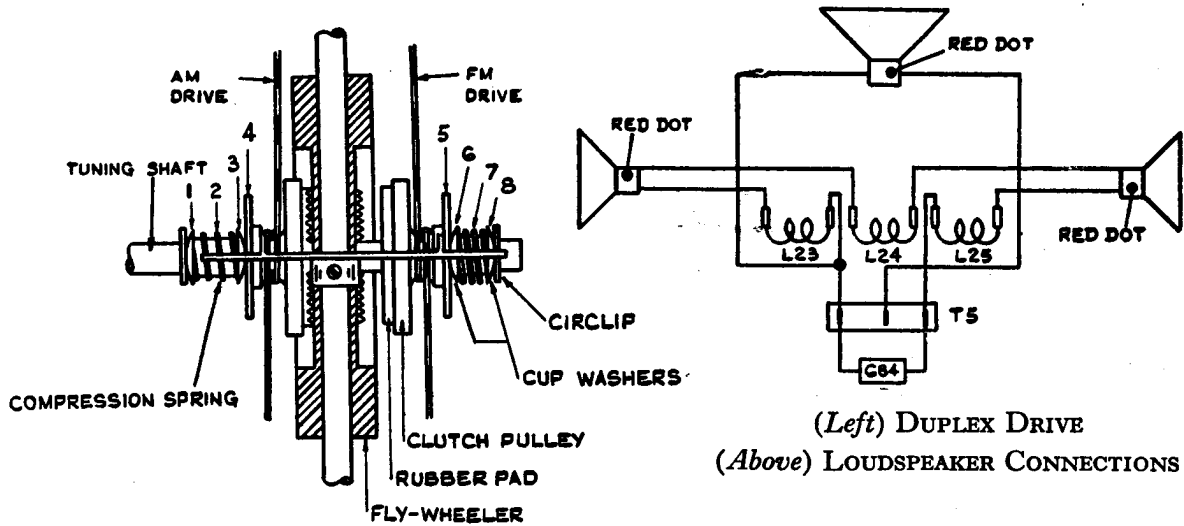
**Power Supply :** A.C. mains, 110 volts and 200-250 volts.

**Valve Analysis :** Measurements taken on Avo Model 8 (20,000-ohms/volt) meter under no-signal conditions.

Valve	Anode, volts		Anode, mA.		Screen, volts		Screen, mA.		Cathode, volts	
	F.M.	A.M.	F.M.	A.M.	F.M.	A.M.	F.M.	A.M.	F.M.	A.M.
V1(a) ECC85 .	150	—	10	—	—	—	—	—	—	—
V1(b) ECC85 .	150	—	4	—	—	—	—	—	—	—
V2 ECH81 .	204	226	6	3.5	105	89	3.5	4.7	1.9	2.3
(osc.) .	—	125	—	3.5	—	—	—	—	—	—
V3 EM80 .	220	220	—	—	—	—	—	—	—	—
(target)	50	50	—	—	—	—	—	—	—	—
V4 EF89 .	200	219	7.5	8.3	56	63	2.4	2.6	—	—
V5 EABC80 .	50	70	0.4	0.4	—	—	—	—	—	—
V6 EL84 .	238	245	34	36	210	230	4	4.5	6.5	6.9



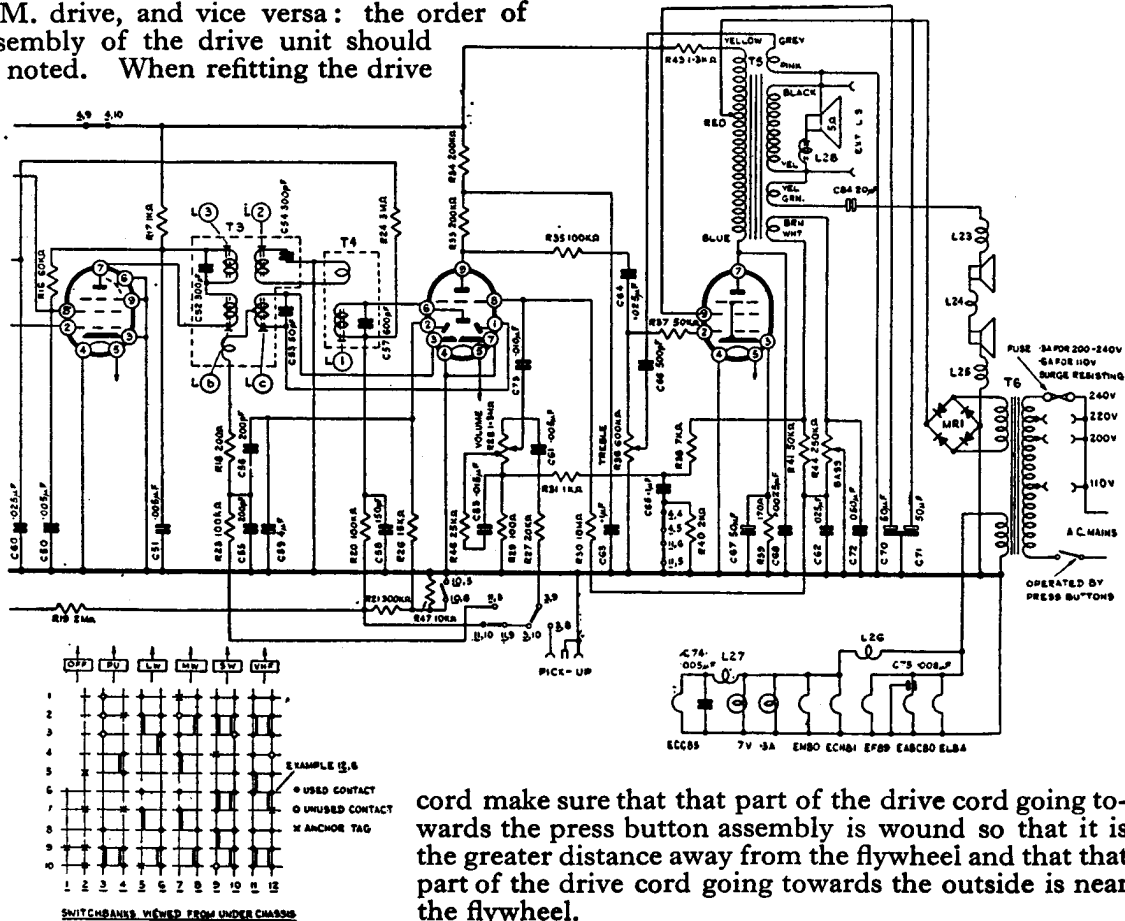
CIRCUIT DIAGRAM—



(Left) DUPLEX DRIVE  
(Above) LOUDSPEAKER CONNECTIONS

**Servicing Notes:** R13 and R17 form overload protection for the I.F. transformers, and should not be replaced with resistors rated above 1/4 watt. A check point is provided for the V.H.F. oscillator (a wire protruding behind the V.H.F. tuning capacitors): from this point negative grid bias should be approximately 2.5 volts. The connections of the three loudspeakers and the output transformer should be carefully observed (see diagram). Switch-cleaning fluids should be applied very sparingly—if at all—to avoid damage to coil formers and cores.

**Duplex Drive:** A special drive system is incorporated to enable a V.H.F. station to be tuned in without upsetting the setting of the A.M. drive, and vice versa: the order of assembly of the drive unit should be noted. When refitting the drive



cord make sure that that part of the drive cord going towards the press button assembly is wound so that it is the greater distance away from the flywheel and that that part of the drive cord going towards the outside is near the flywheel.

— GRUNDIG MODEL 2043/W/3D