



BY APPOINTMENT TO  
HER MAJESTY THE QUEEN  
RADIO MANUFACTURERS  
ROBERTS RADIO CO LTD

# THE ROBERTS R 800

From Serial No. 7051

FM/AM Mains Battery Portable

## Technical Data



### Specification

#### SEMICONDUCTORS

1 integrated circuit  
7 transistors  
7 diodes  
1 bridge rectifier

#### WAVEBAND COVERAGE

LF 150-265 kHz  
MF 520-1610kHz  
VHF 88-104 MHz

#### POWER OUTPUT

800 mW nominal, continuous sinewave

#### LOUDSPEAKER

100mm (4") round, 8 ohms impedance

#### BATTERY

9V PP9-VT9 Type

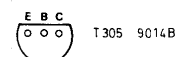
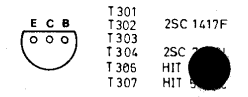
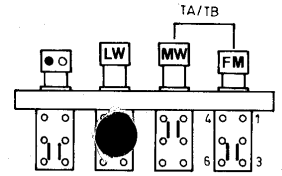
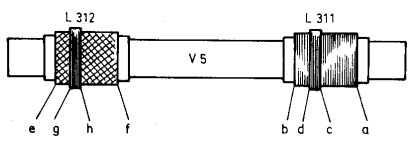
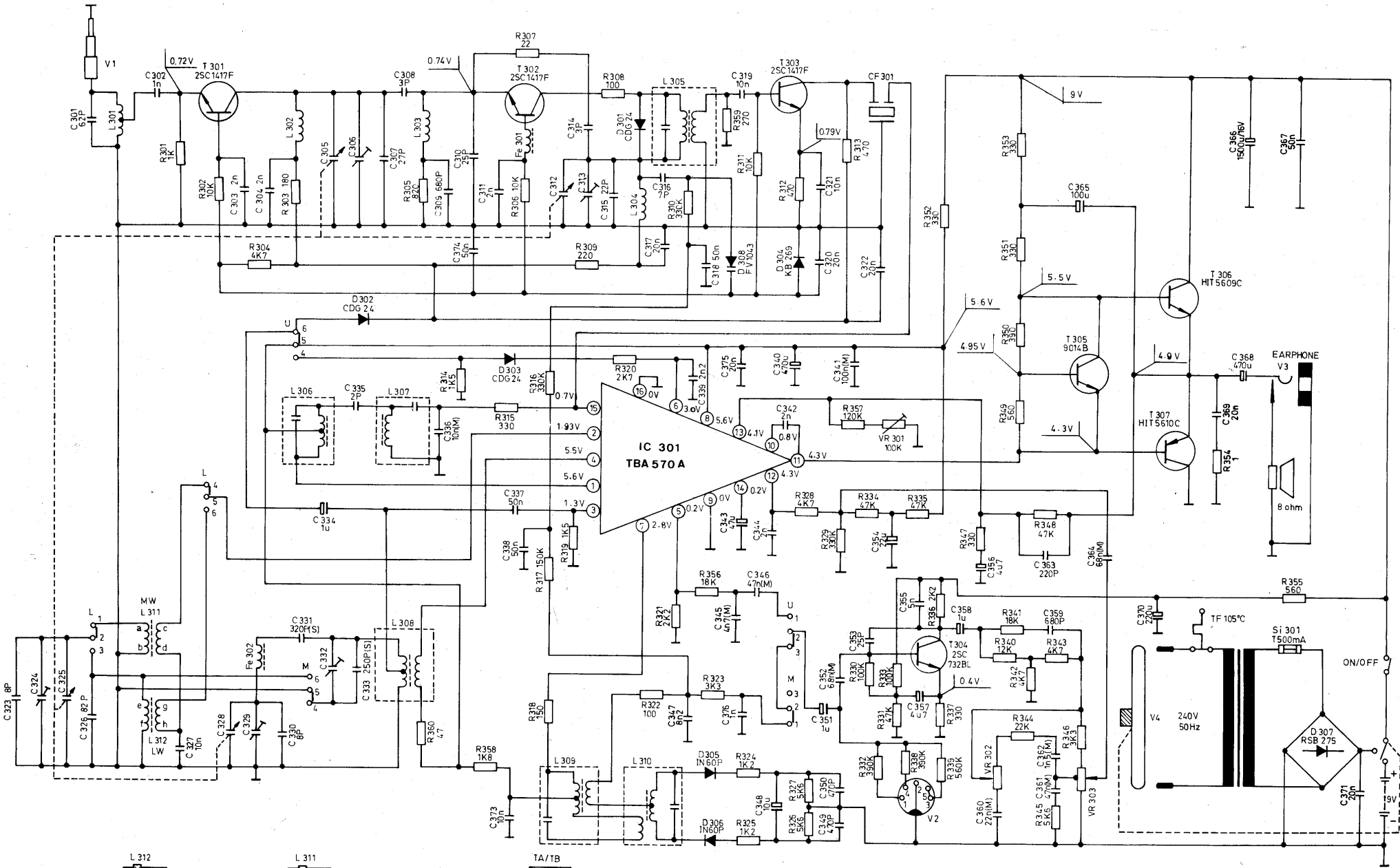
#### MAINS SUPPLY

240V-50 Hz

### Dismantling

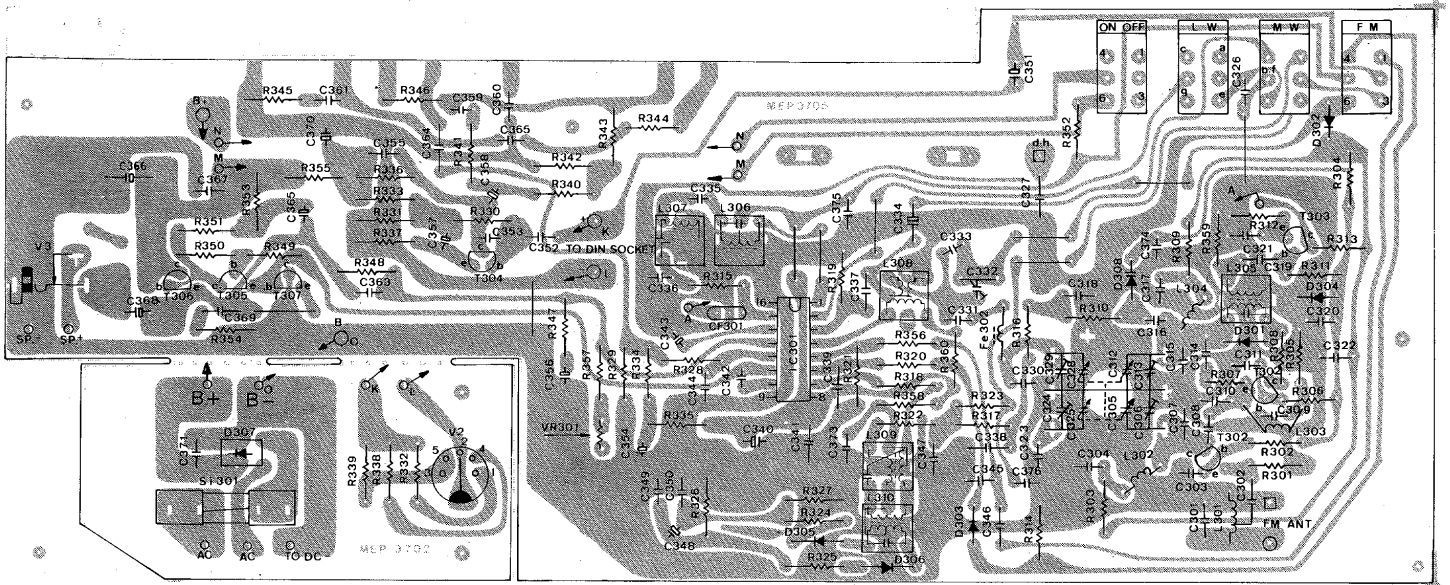
1. Remove base, disconnect loudspeaker, remove screw securing lower end of telescopic aerial.
2. Remove flange head screw at either end of case (above handle fixing).
3. Ease chassis out from top of case to extent of leads. Disconnect power leads, B+ RED and B- BLACK. Disconnect leads from DIN socket D YELLOW E BLACK, chassis may now be removed.
4. Power unit is secured by two flange head screws in case end and one nut in case back.

# CIRCUIT DIAGRAM



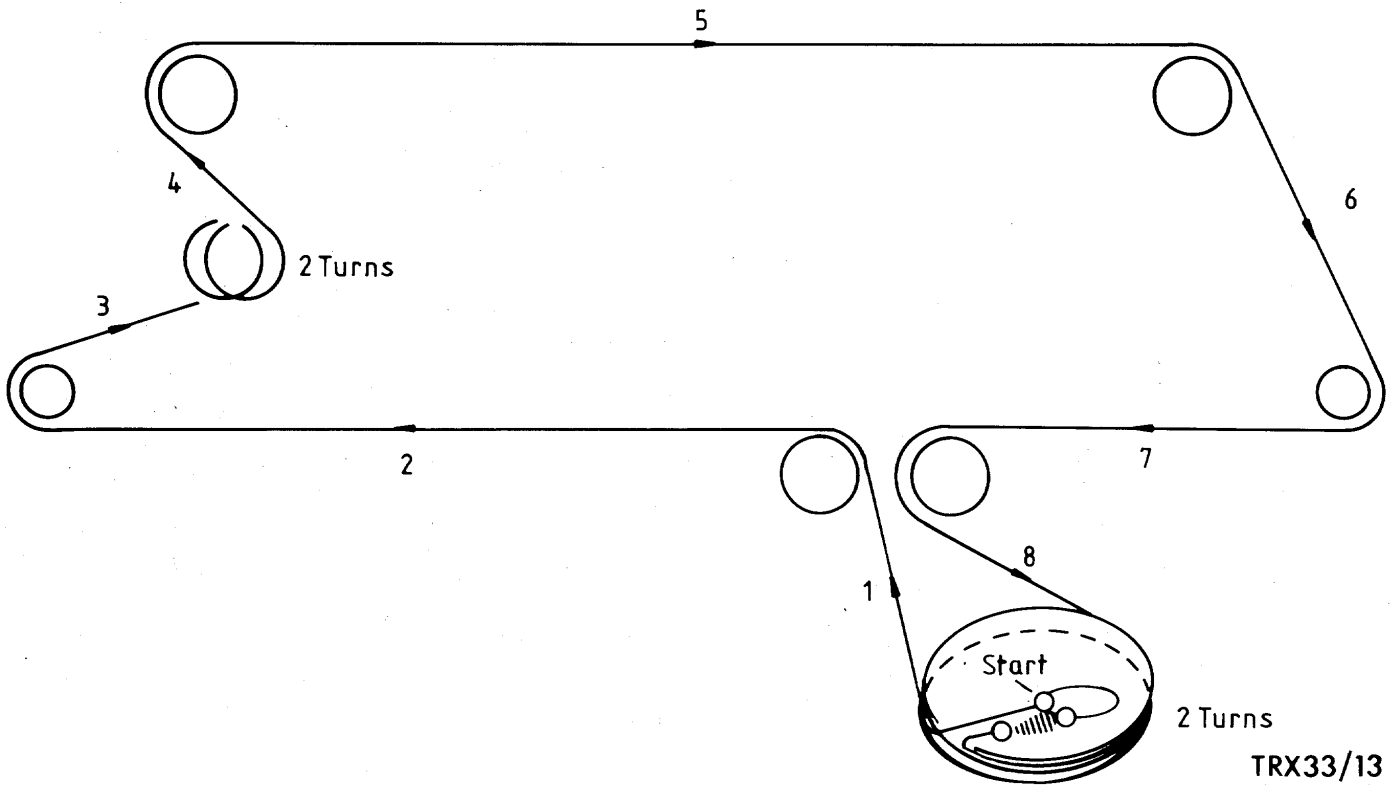
TRX 33/16

# COMPONENT LOCATION



TRX33/15

# CORD DRIVE DIAGRAM



TRX33/13

The company reserves the right to amend the specification without notice.

## ALIGNMENT

WITH GANG AT MAX POINTER SHOULD COINCIDE WITH DATUM MARKS AT RIGHT HAND END OF SCALE  
ALL SIGNALS INJECTED VIA COUPLING LOOP

	WAVE-BAND	SWEEP/SIGNAL GENERATOR		POINTER	INDICATOR	ADJUST	INDICATION
1	MF	468 kHz	25 kHz Deviation	LF End	Scope across C345	L306 (Yellow) L307 (White)	Max Amplitude & Symmetry
2	MF	525 kHz	30% AM	LF End	Scope across C345 or output meter	L308 (Red)	Max O/P
3	MF	1630 kHz	30% AM	HF End	– as 2 –	C329	Max O/P
4	MF	560 kHz	30% AM	Tune to signal	– as 2 –	L311	Max O/P
5	MF	1500 kHz	30% AM	Tune to signal	– as 2 –	C324	Max O/P
REPEAT 2-5 FOR OPTIMUM RESULTS							
6	LF	270 kHz	30% AM	HF End	– as 2 –	C332	Max O/P
7	LF	200 kHz	30% AM	200 kHz	– as 2 –	L312	Max O/P
For Following Adjustments Maintain I/P Below Limiting							
8	VHF	88 MHz	1 MHz Deviation	Tune to signal	Scope across C347	L305, L309 & L310 Orange, Pink, Blue	Max Amplitude & Symmetry of S Curve
9	VHF	87.4 MHz	22,5 kHz Deviation	LF End	Scope across C347 or output meter	L304 & L302	Max O/P
10	VHF	104,5 MHz	22,5 kHz Deviation	HF End	– as 9 –	C313 & C306	Max O/P
REPEAT 9 & 10 FOR OPTIMUM RESULTS							