



BY APPOINTMENT TO
HER MAJESTY THE QUEEN
RADIO MANUFACTURERS
ROBERTS RADIO CO LTD

THE ROBERTS R 800

FM/AM Mains Battery Portable

Technical Data



Specification

SEMICONDUCTORS

1 integrated circuit
7 transistors
3 diodes
1 bridge rectifier

WAVEBAND COVERAGE

LF 150-260 kHz
MF 520-1610 kHz
VHF 88-104 MHz

POWER OUTPUT

800 mW nominal, continuous sinewave

LOUDSPEAKER

100mm (4") round, 8 ohms impedance

BATTERY

9V PP9-VT9 Type

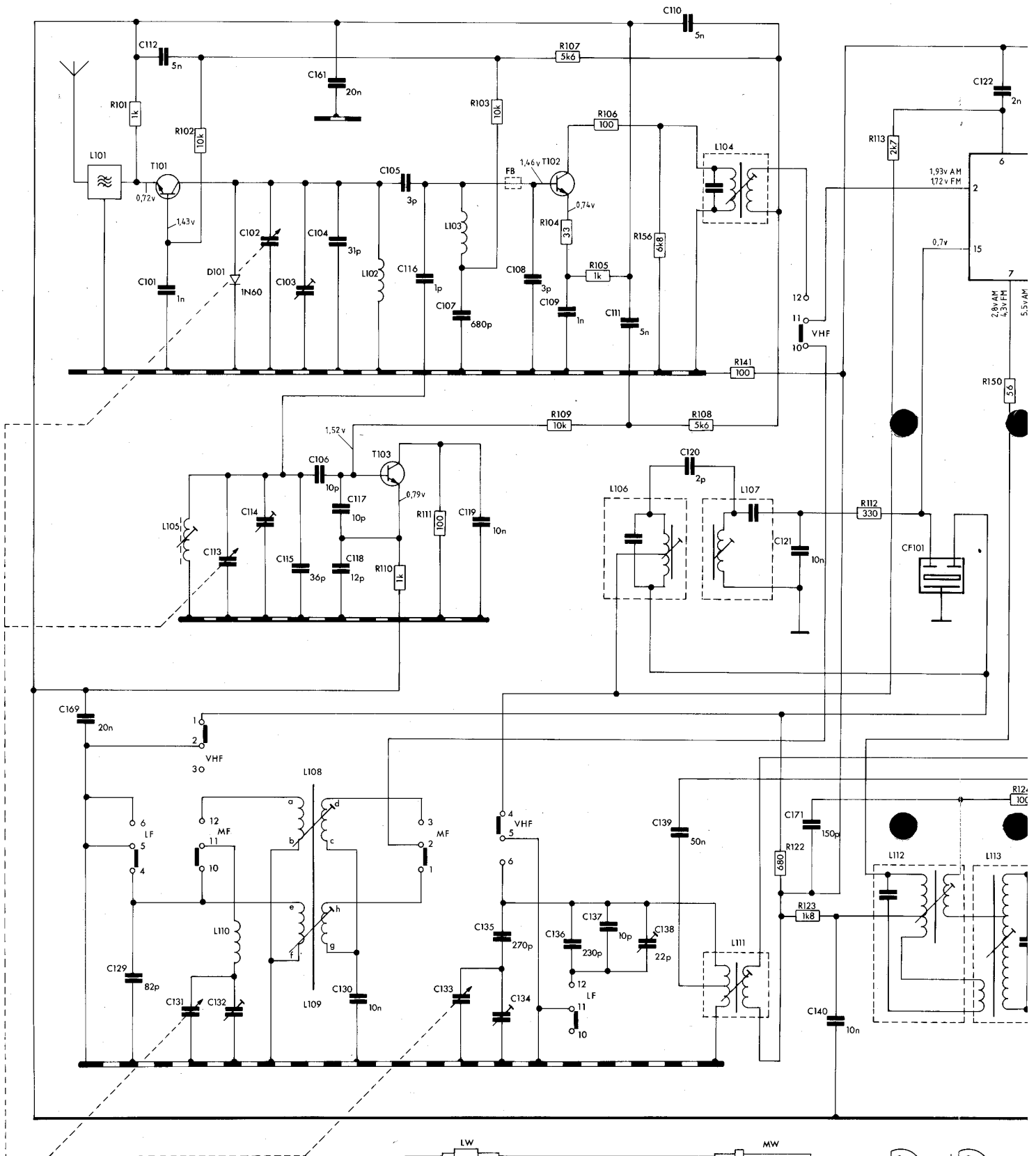
MAINS SUPPLY

240V-50 Hz

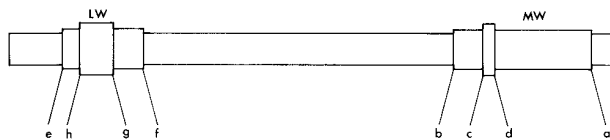
Dismantling

1. Remove base, disconnect loudspeaker, remove screw securing lower end of telescopic aerial.
2. Remove flange head screw at either end of case (above handle fixing).
3. Ease chassis out from top of case to extent of leads. Disconnect power leads, B+ RED and B- BLACK. Disconnect leads from DIN socket D YELLOW E BLACK, chassis may now be removed.
4. Power unit is secured by two flange head screws in case end and one nut in case back.

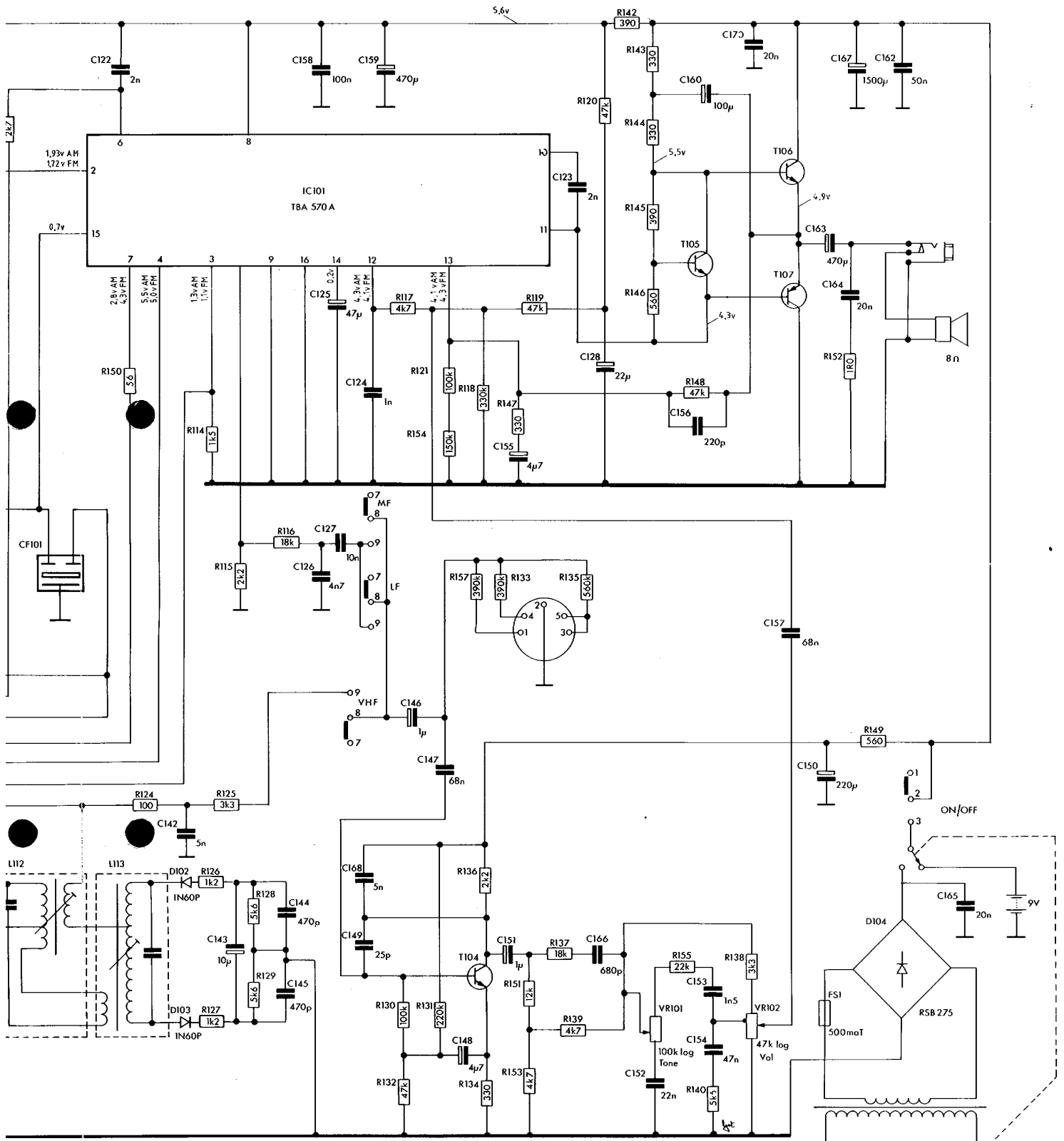
CIRCUIT DIAGRAM



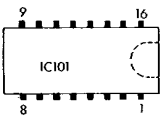
Resistor values in Ohms Capacitor values in Farads



- | | | | |
|---|---|---|---|
| c | • | b | • |
| b | • | c | • |
| e | • | e | • |
| a | • | a | • |
- T105 9014B
T106 NA31
T107 NA32
- T101,102,103 25C141;
T104 25C7328L

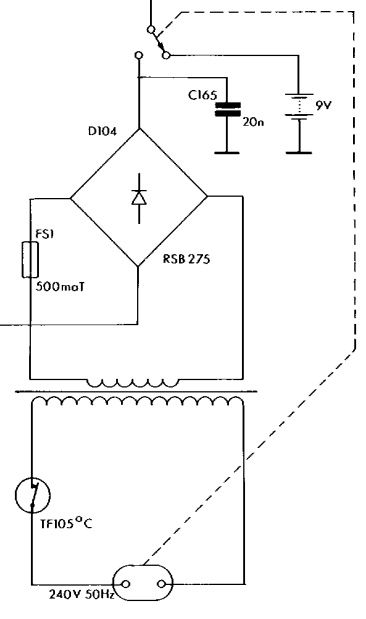


- 1105 9014B
- 1106 NA31
- 1107 NA32
- T101, T02, T03 2SC1417F
- T104 2SC7328L

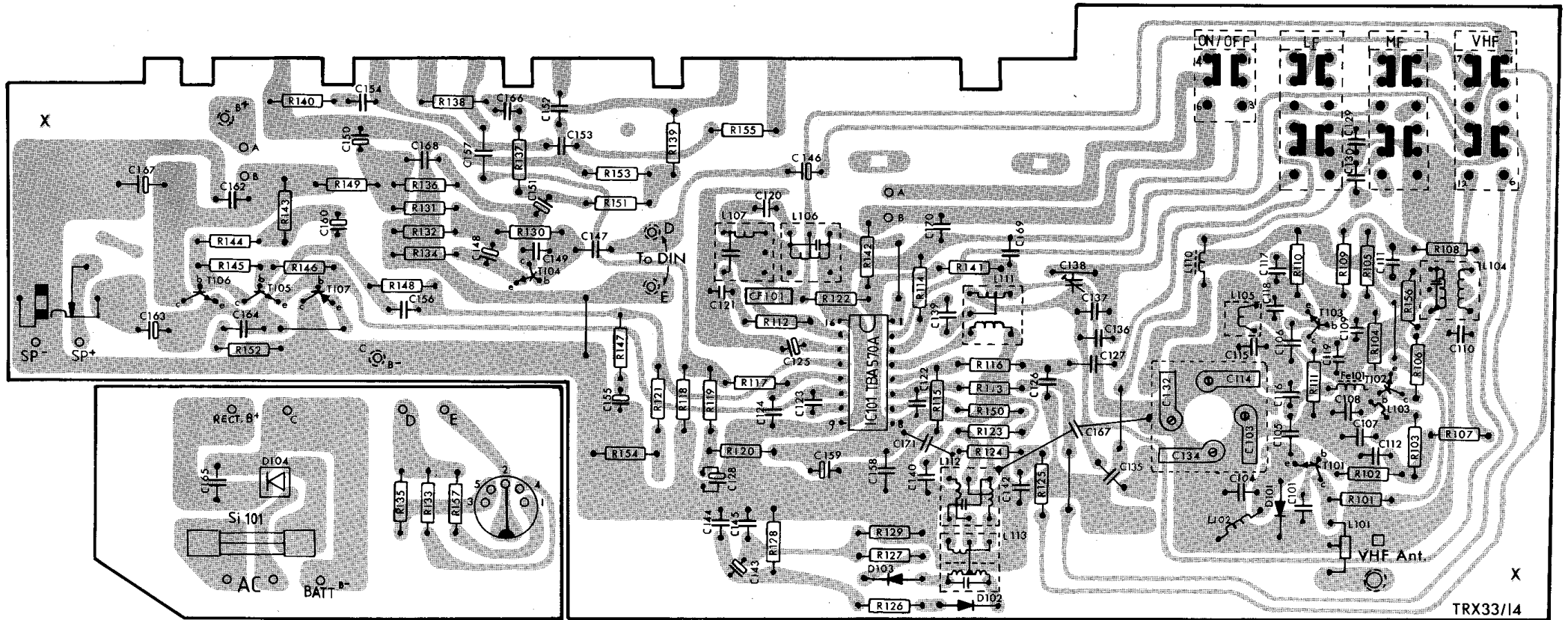


DC voltages measured with respect to -Ve and shown thus: 4.3v

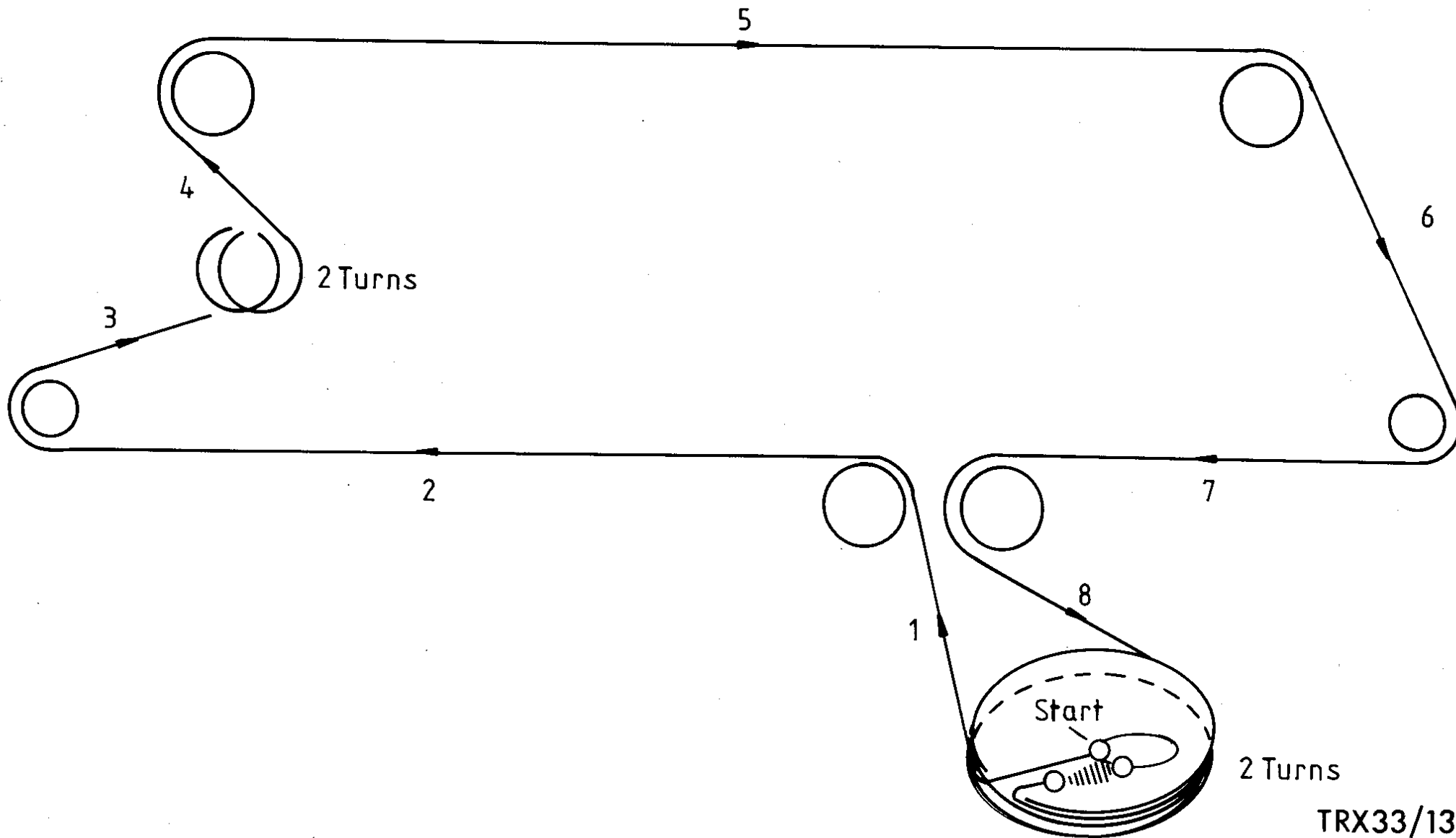
The Company reserves the right to amend the specification without notice



COMPONENT LOCATION



CORD DRIVE DIAGRAM



ALIGNMENT

WITH GANG AT MAX POINTER SHOULD COINCIDE WITH DATUM MARKS AT RIGHT HAND END OF SCALE
ALL SIGNALS INJECTED VIA COUPLING LOOP

	WAVE-BAND	SWEEP/SIGNAL GENERATOR		POINTER	INDICATOR	ADJUST	INDICATION
1	MF	468 kHz	25 kHz Deviation	LF End	Scope across C126	L106 (Yellow) L107 (White)	Max Amplitude & Symmetry
2	MF	518 kHz	30% AM	LF End	Scope across C126 or output meter	L111 (Red)	Max O/P
3	MF	1615 kHz	30% AM	HF End	– as 2 –	C134	Max O/P
4	MF	560 kHz	30% AM	Tune to signal	– as 2 –	L108	Max O/P
5	MF	1500 kHz	30% AM	Tune to signal	– as 2 –	C132	Max O/P
REPEAT 2-5 FOR OPTIMUM RESULTS							
6	LF	265 kHz	30% AM	HF End	– as 2 –	C138	Max O/P
7	LF	200 kHz	30% AM	200 kHz	– as 2 –	L109	Max O/P
For Following Adjustments Maintain I/P Below Limiting							
8	VHF	88 MHz	1 MHz Deviation	Tune to signal	Scope across C142	L104, L112 & L113 Orange, Blue, Pink	Max Amplitude & Symmetry of S Curve
9	VHF	87,8 MHz	22,5 kHz Deviation	LF End	Scope across C142 or output meter	L105 & L102	Max O/P
10	VHF	104,5 MHz	22,5 kHz Deviation	HF End	– as 9 –	C114 & C103	Max O/P
REPEAT 9 & 10 FOR OPTIMUM RESULTS							